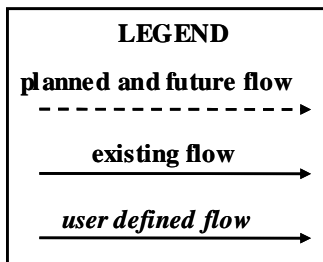
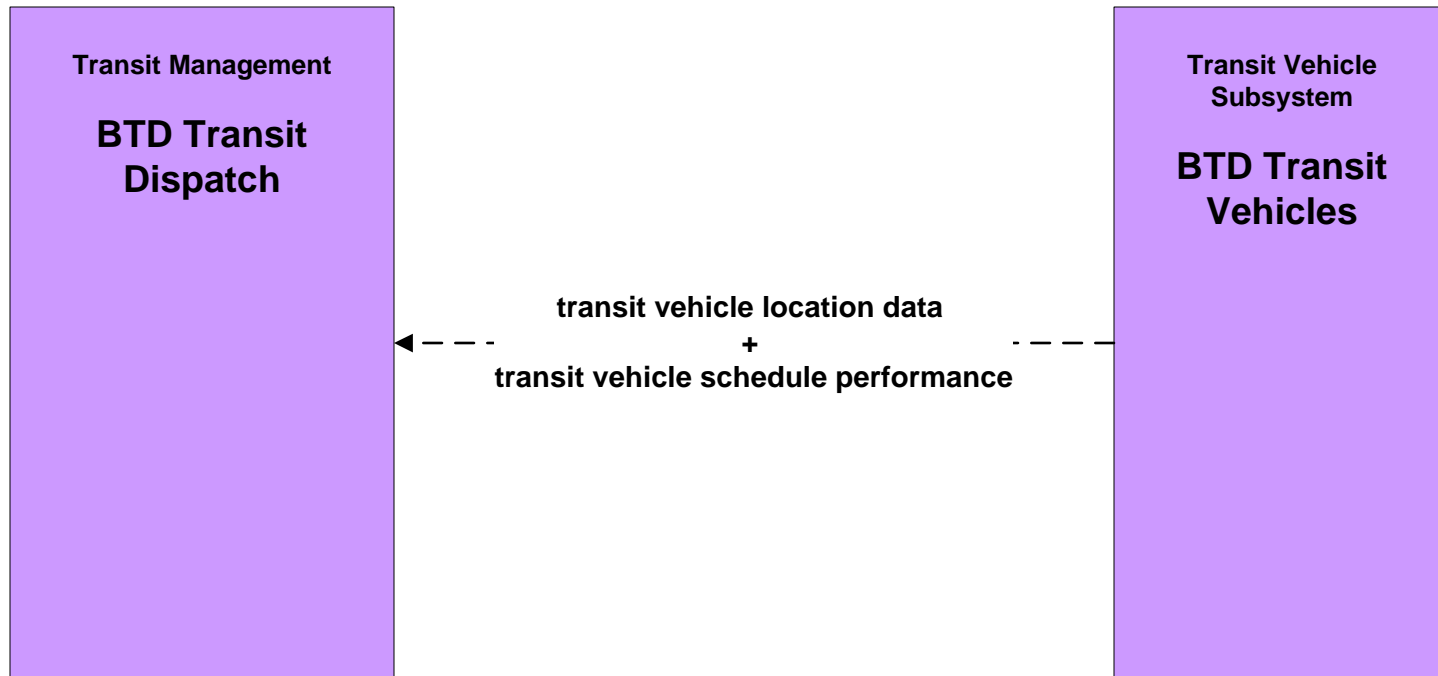


Lufkin Regional ITS Architecture

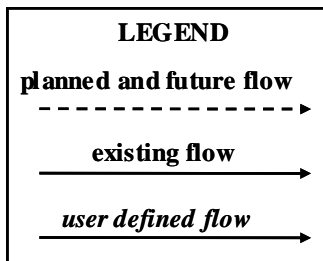
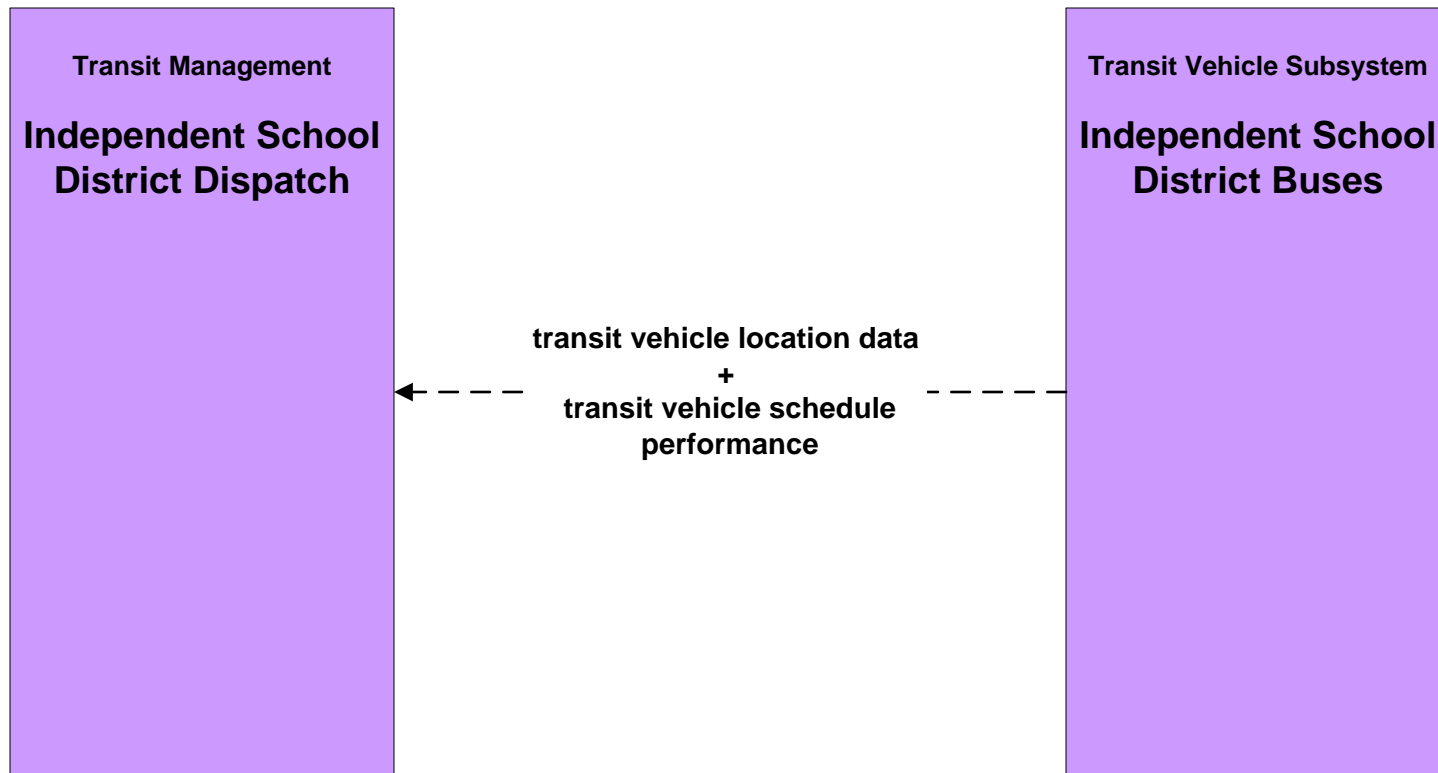
Customized Market Package Diagrams

Advanced Public Transportation Systems (APTS)

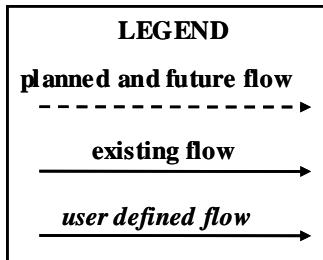
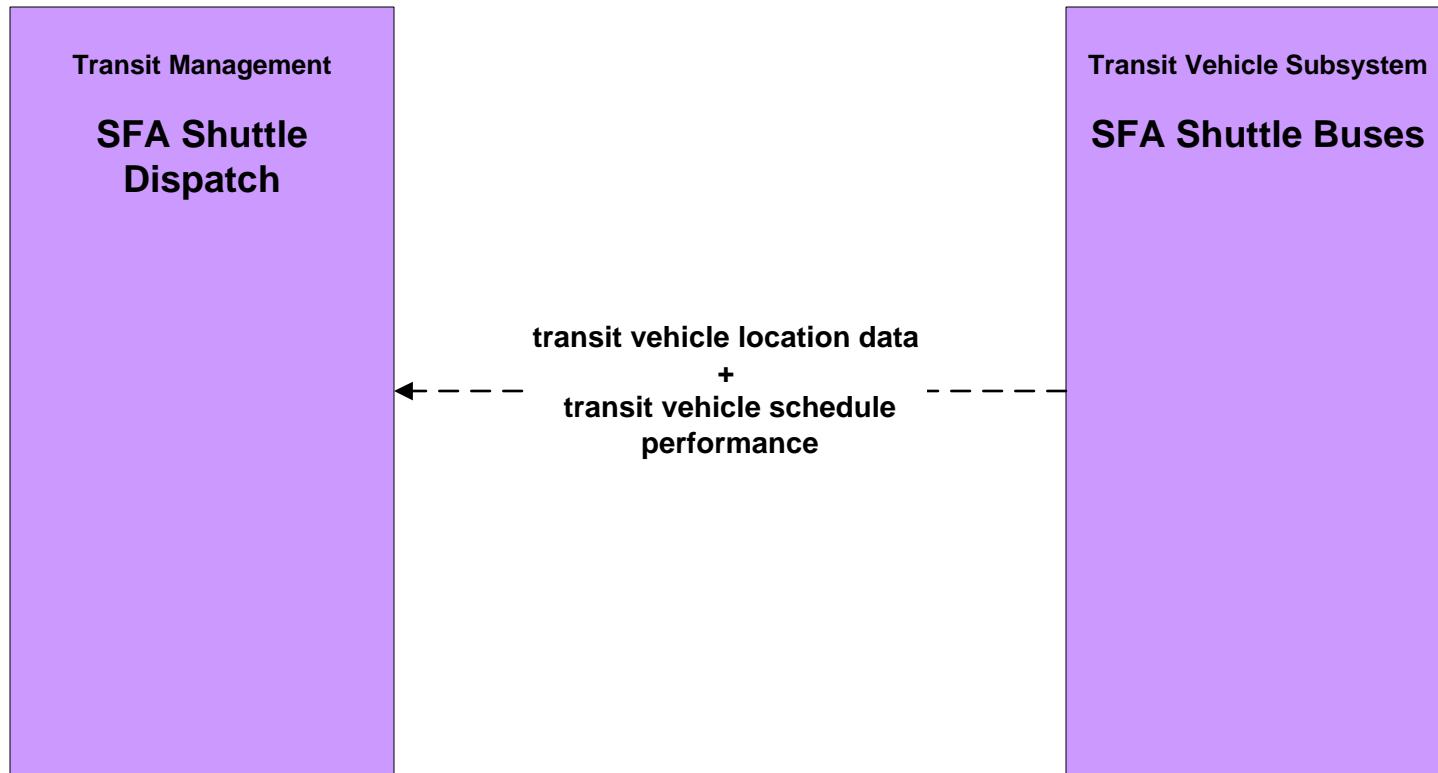
APTS1 - Transit Vehicle Tracking BTD Transit



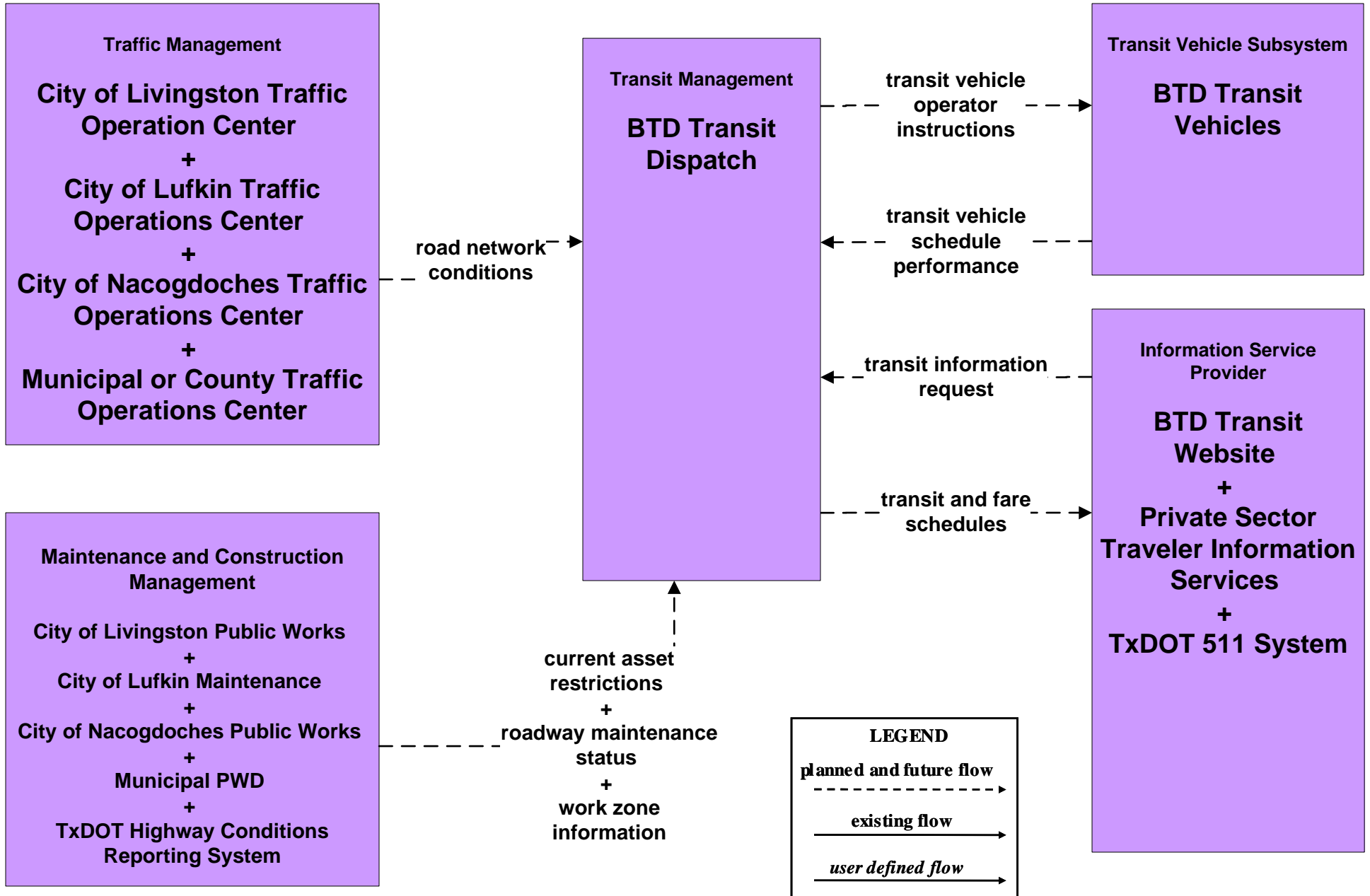
**APTS1 - Transit Vehicle Tracking
Independent School District**



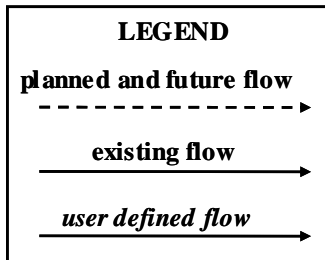
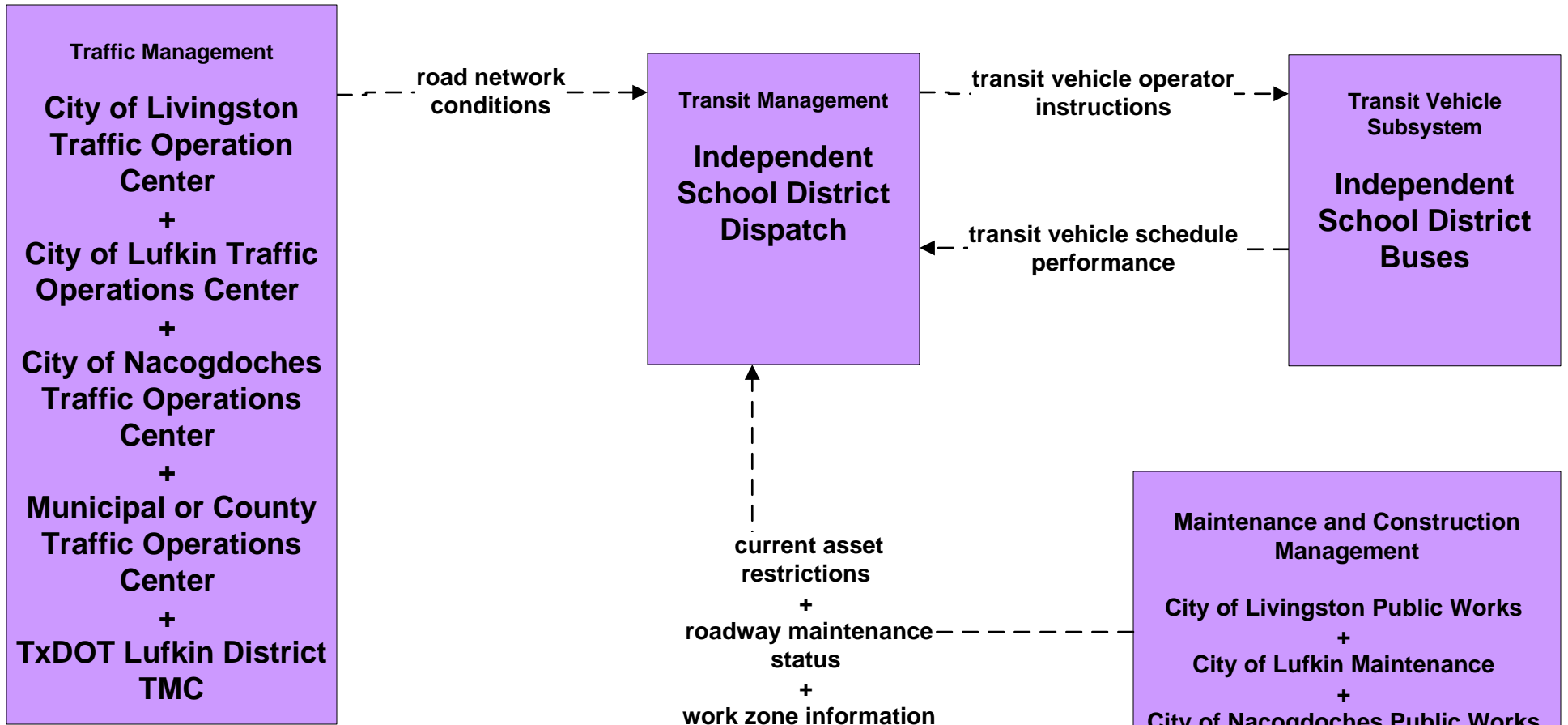
**APTS1 - Transit Vehicle Tracking
SFA Shuttle**



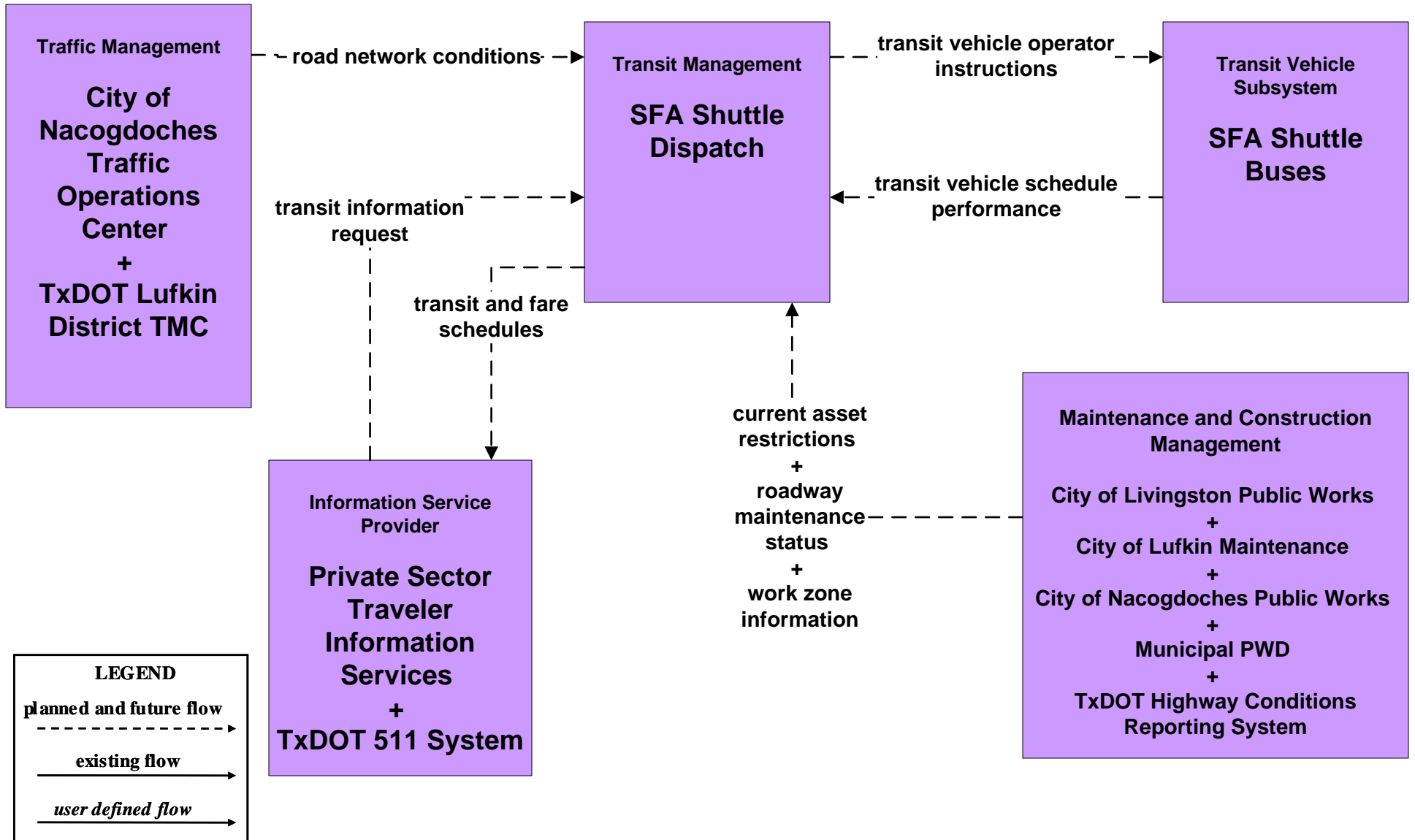
**APTS2 - Transit Fixed-Route Operations
BTD Transit**



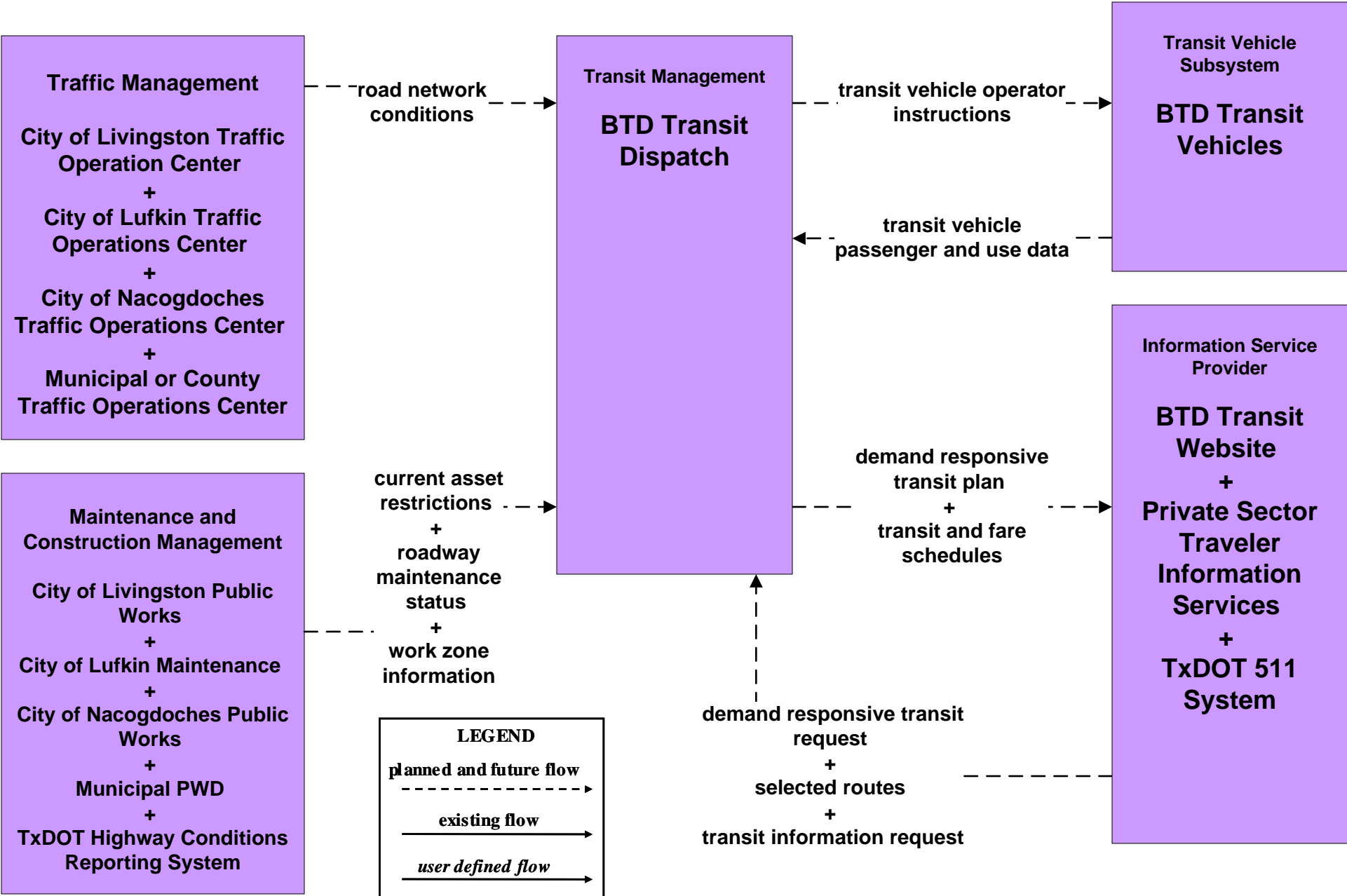
APTS2 - Transit Fixed-Route Operations Independent School Districts



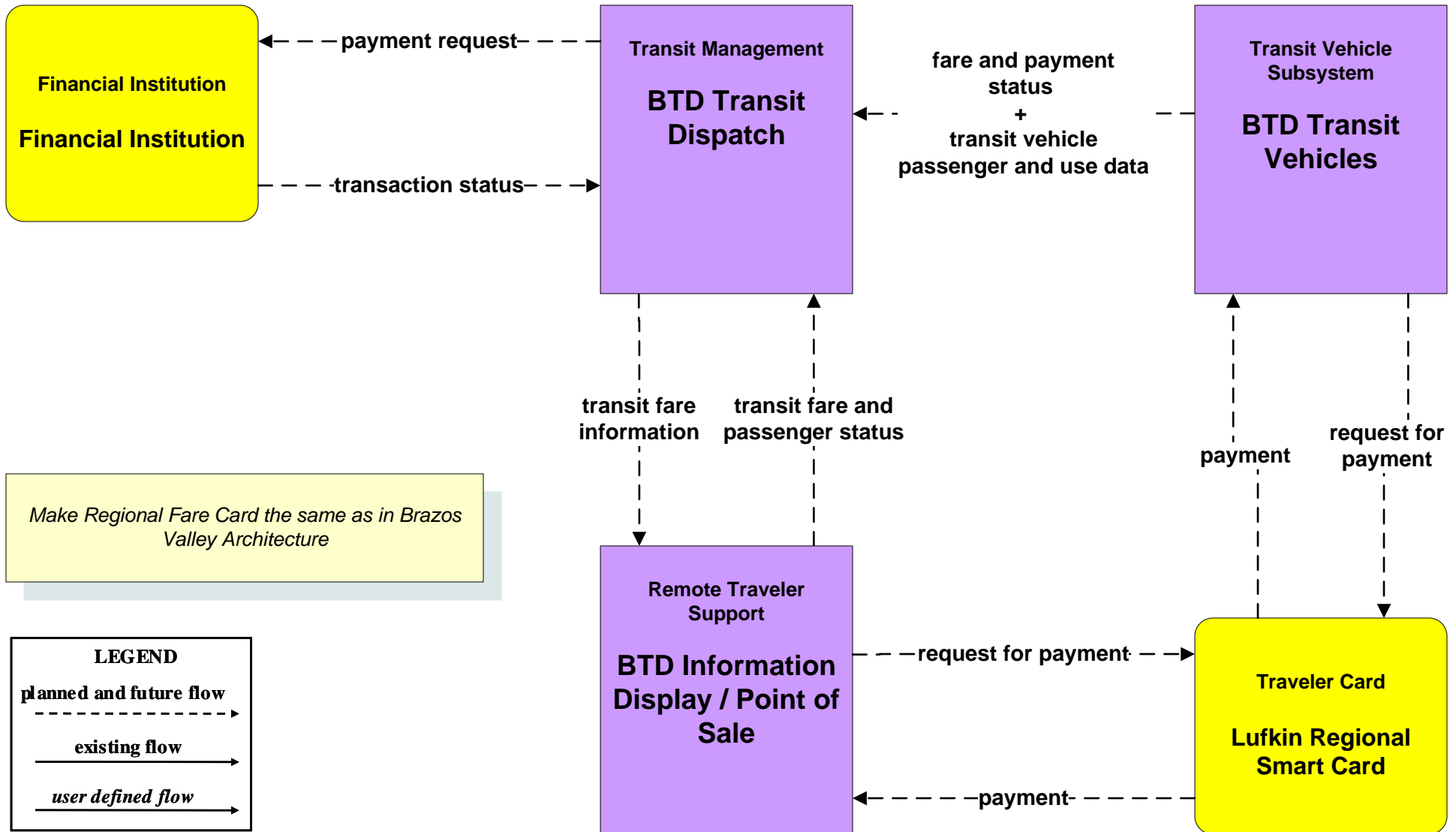
APTS2 - Transit Fixed-Route Operations SFA Shuttle



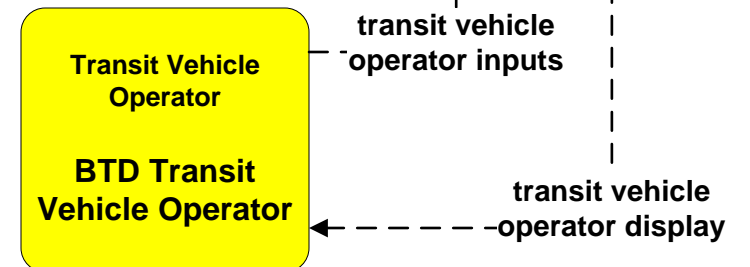
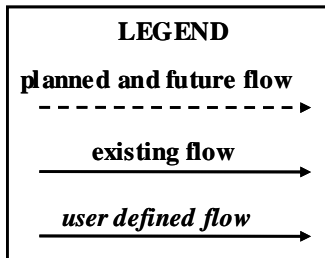
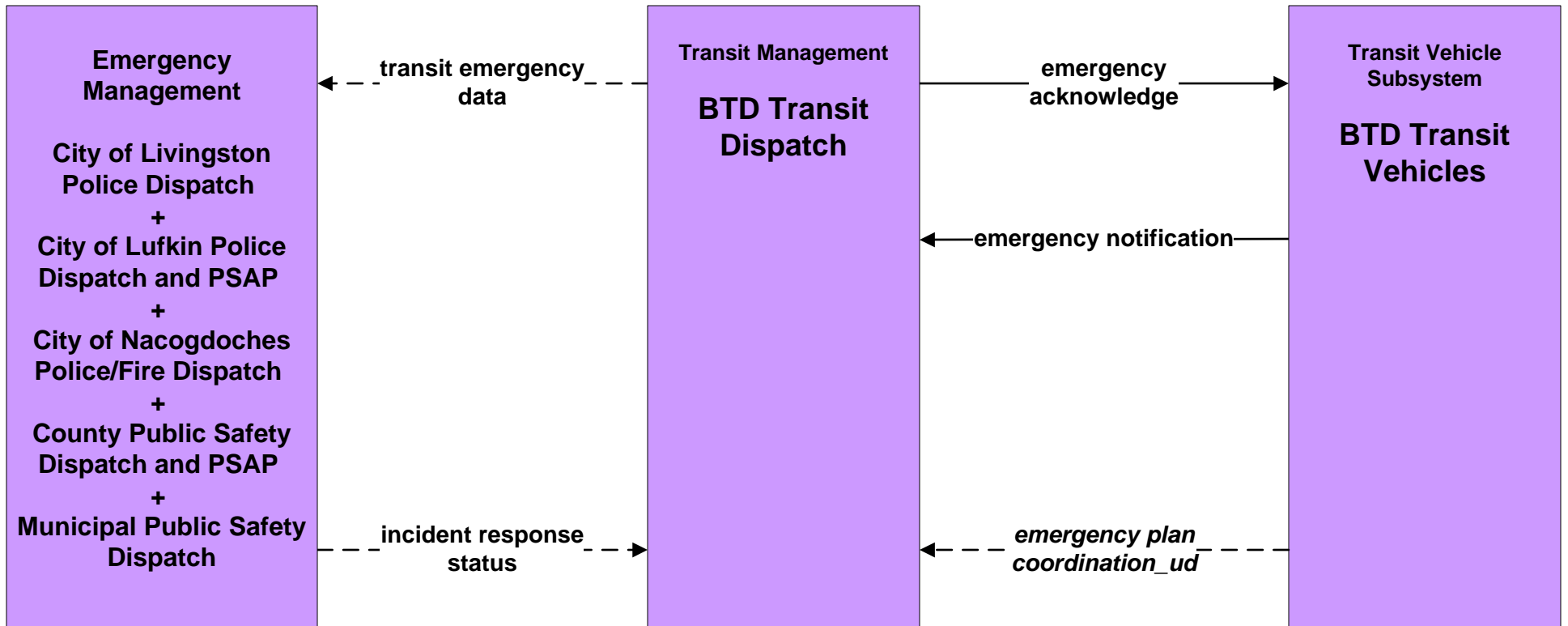
APTS3 - Demand Response Transit Operations BTD Transit



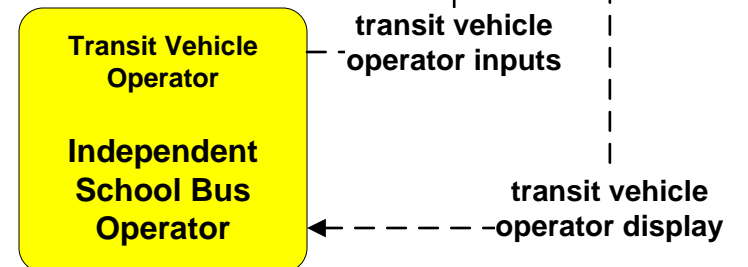
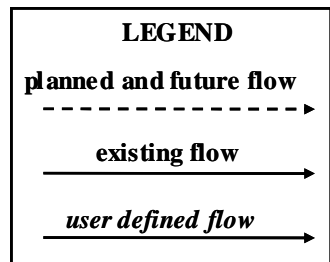
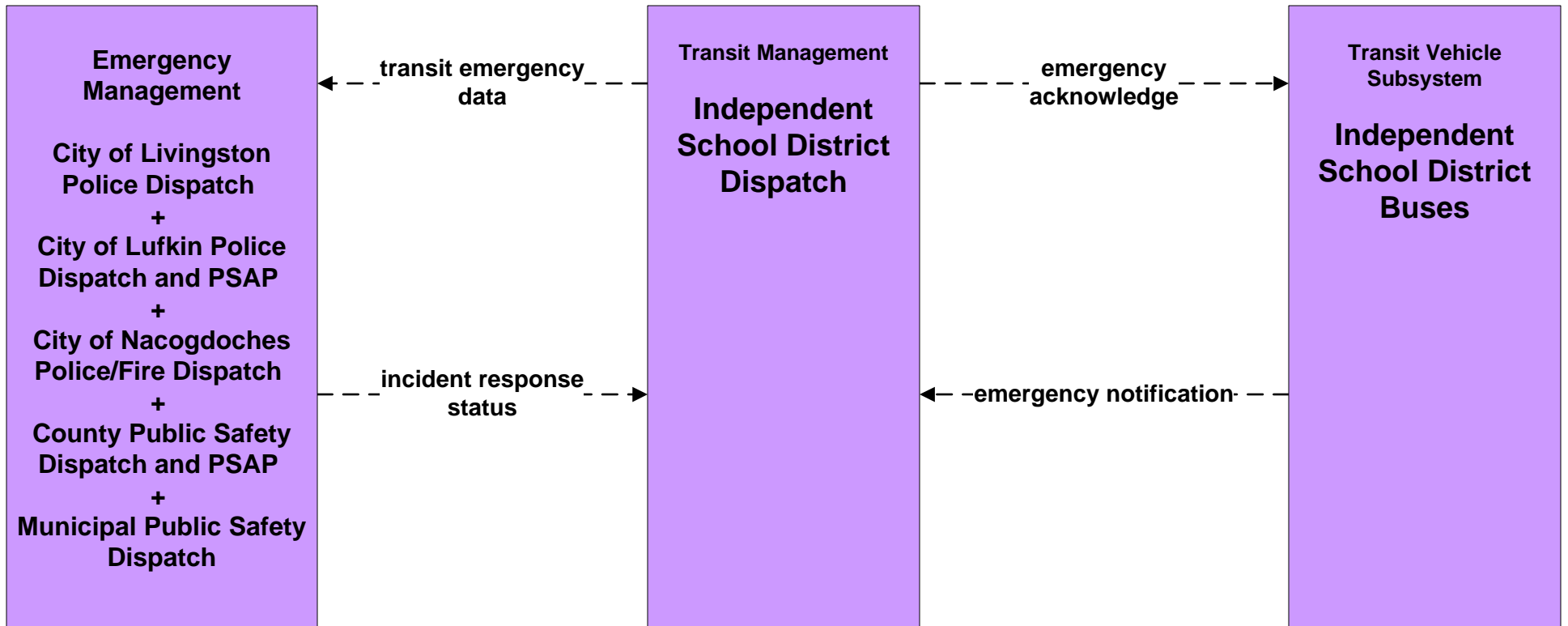
APTS4 - Transit Passenger and Fare Payment BTD Transit



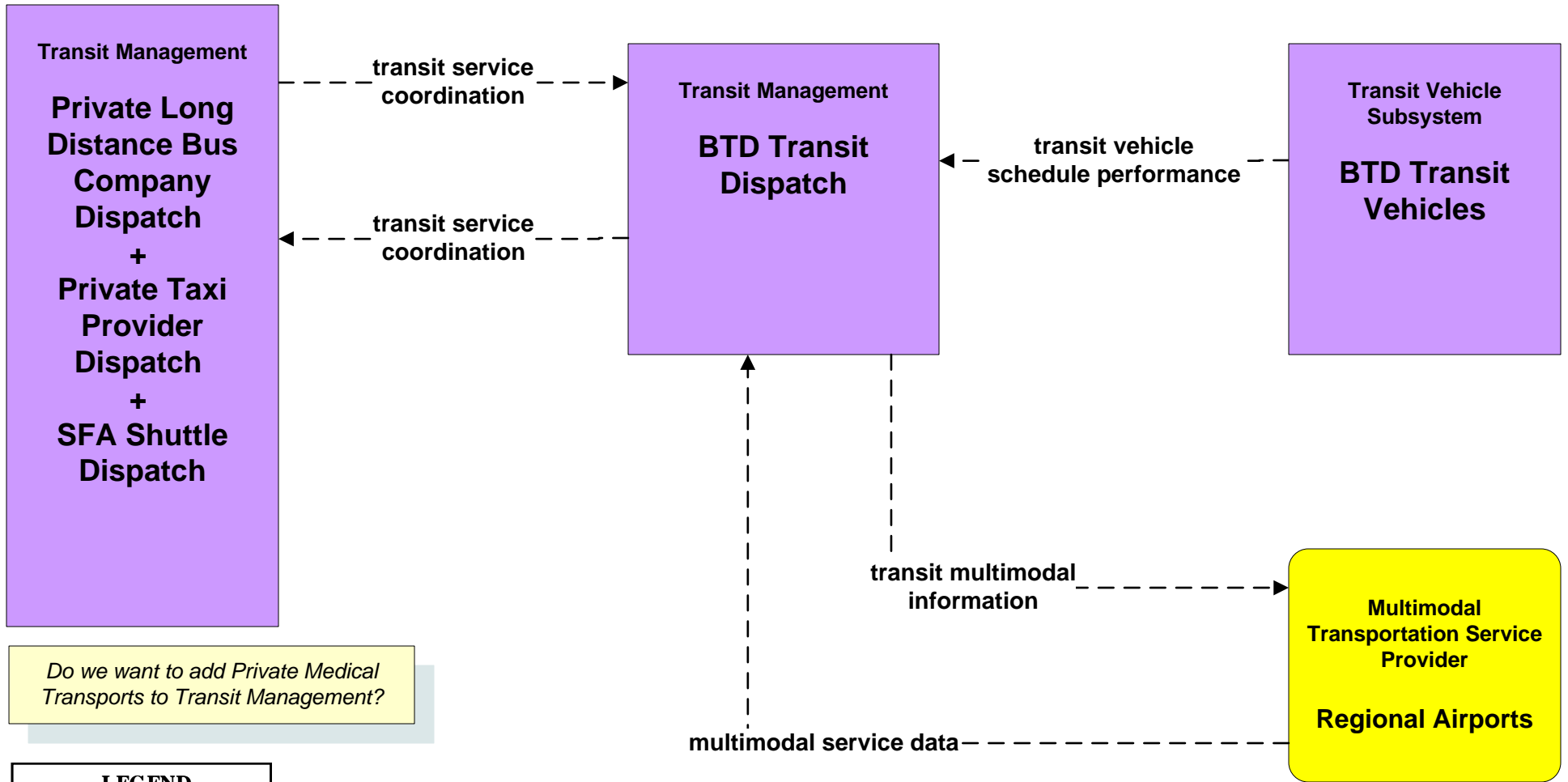
APTS5 - Transit Security BTD Transit



APTS5 - Transit Security Independent School Districts



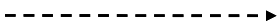
APTS7 - Multimodal Coordination BTD Transit



Do we want to add Private Medical Transports to Transit Management?

LEGEND

planned and future flow



existing flow

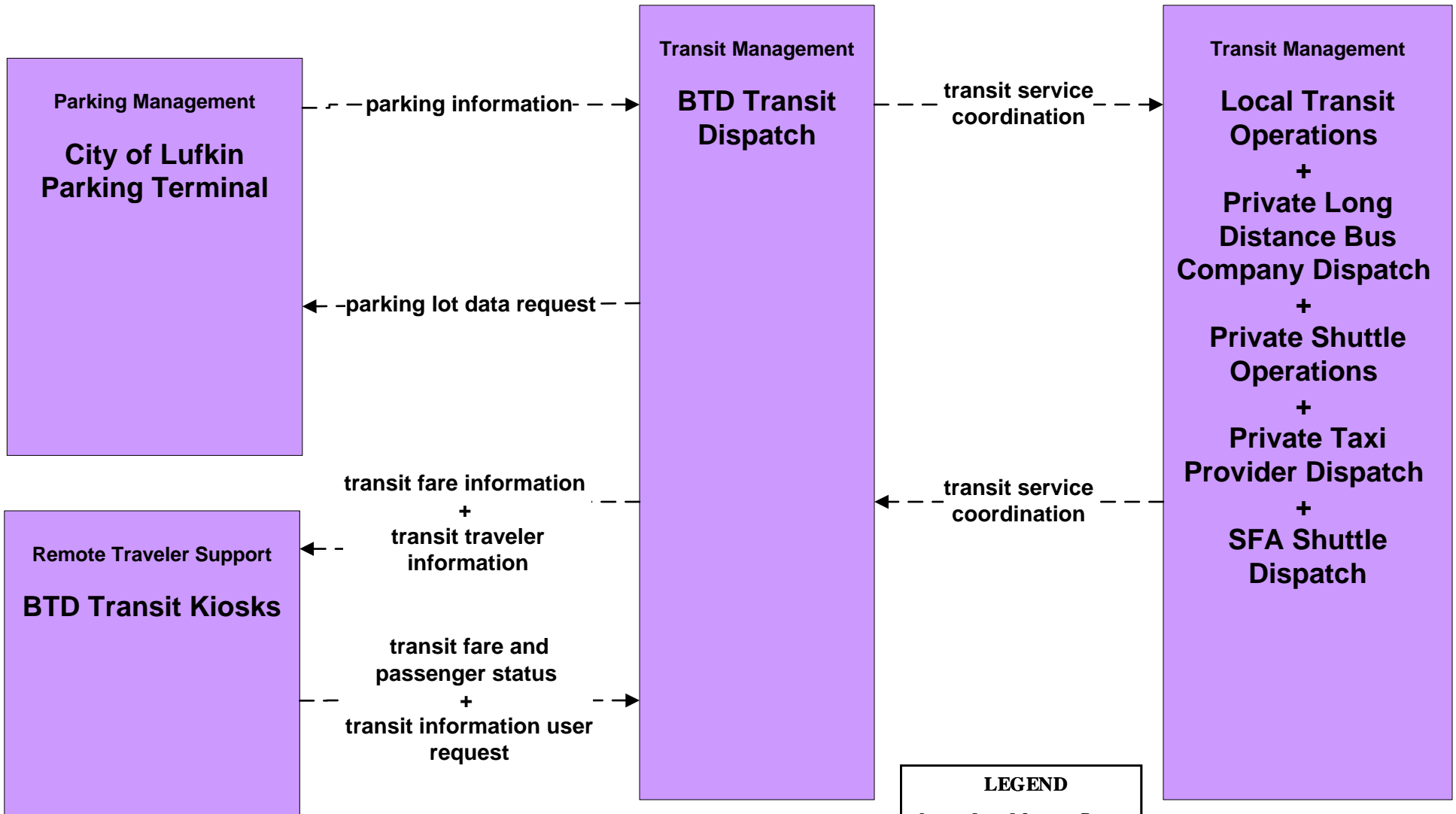


user defined flow

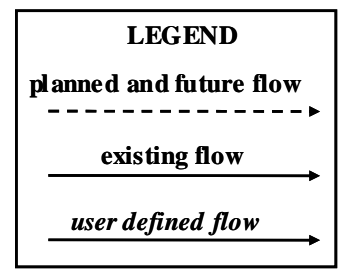


Does Lufkin have its own multimodal center (either existing or planned)?

**APTS7 - Multimodal Coordination
BTD Transit**



*Are there Kiosks in the region
or planned for the region?*



APTS8 - Transit Traveler Information BTD Transit

