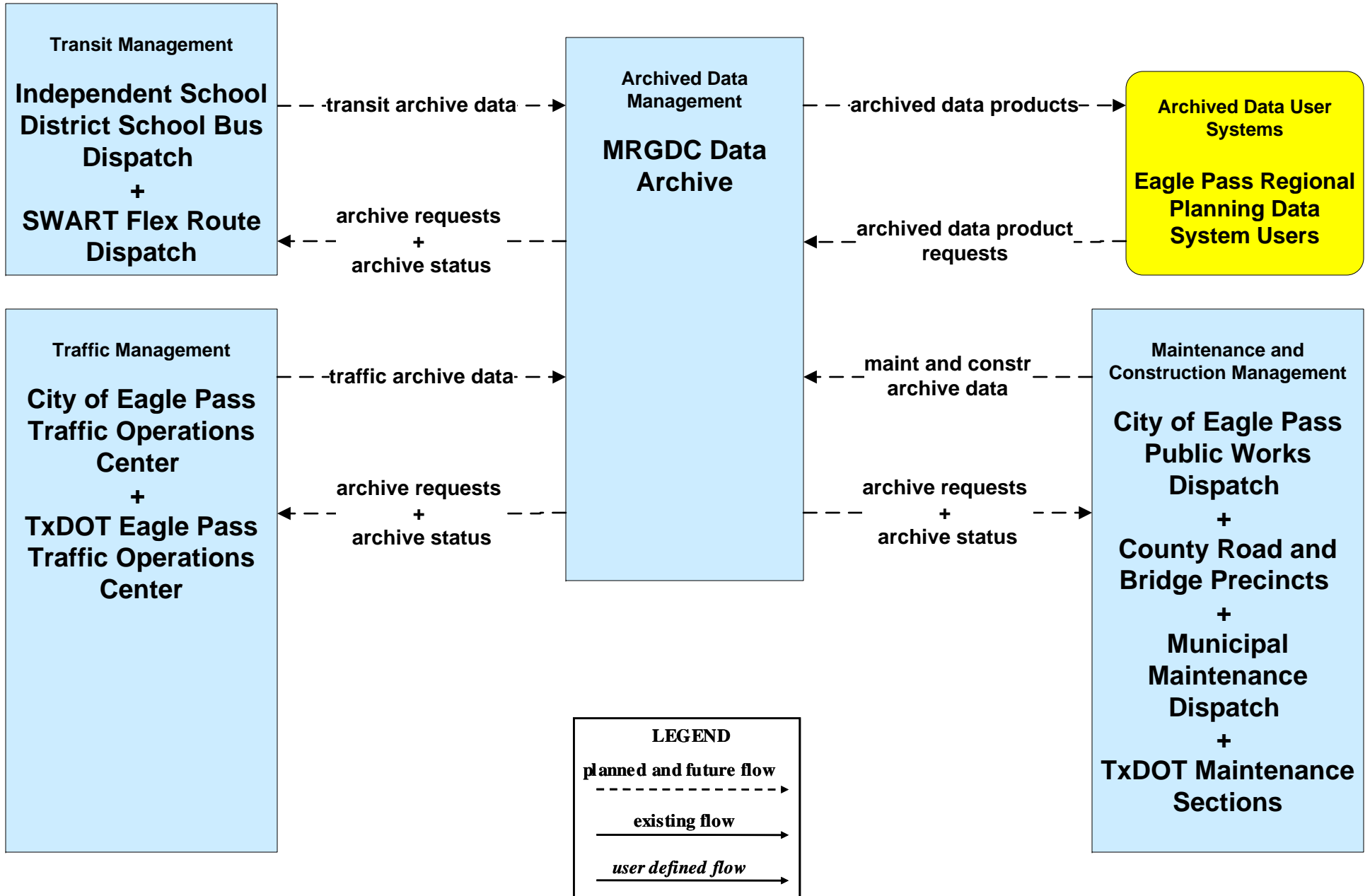
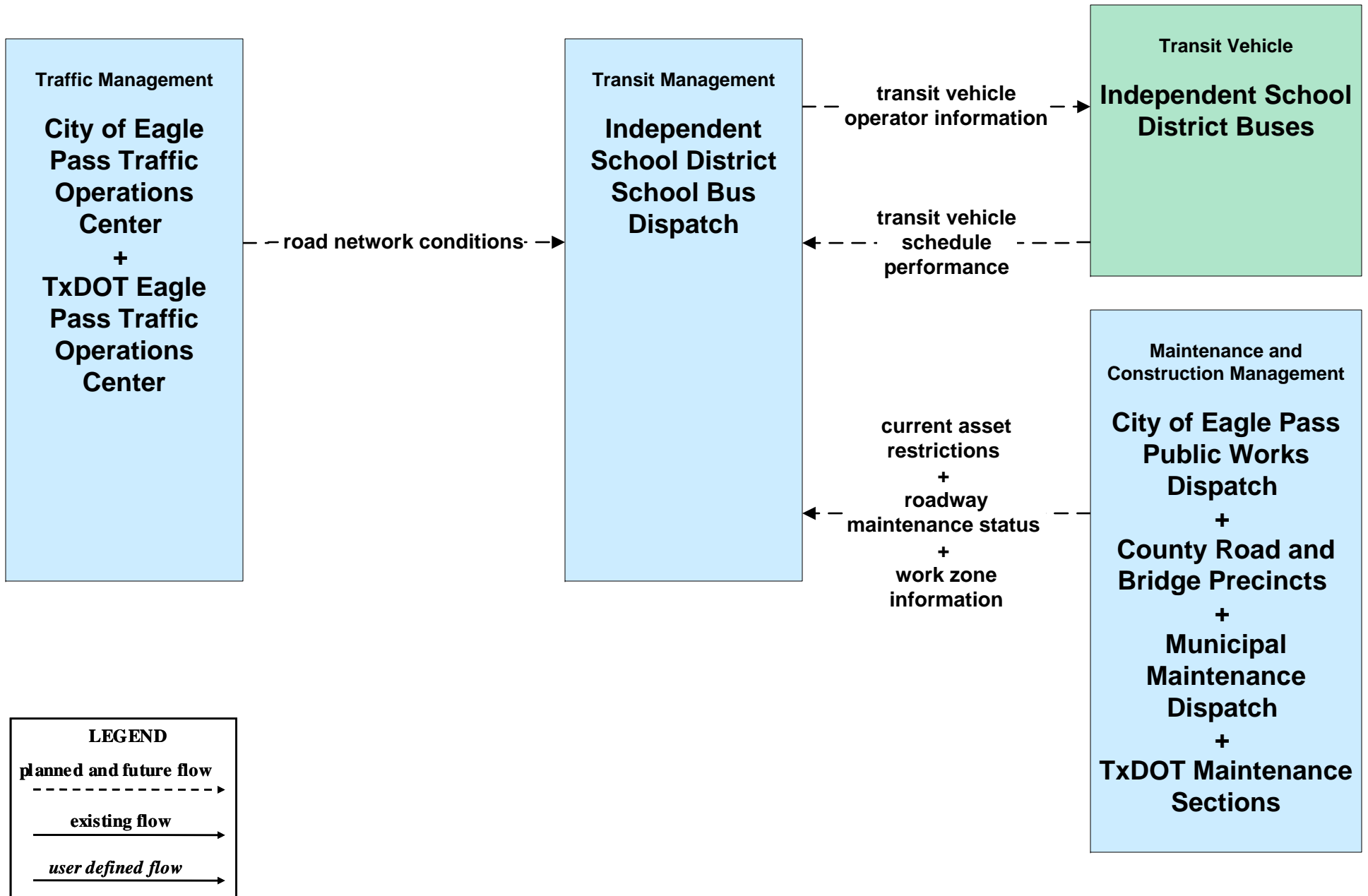


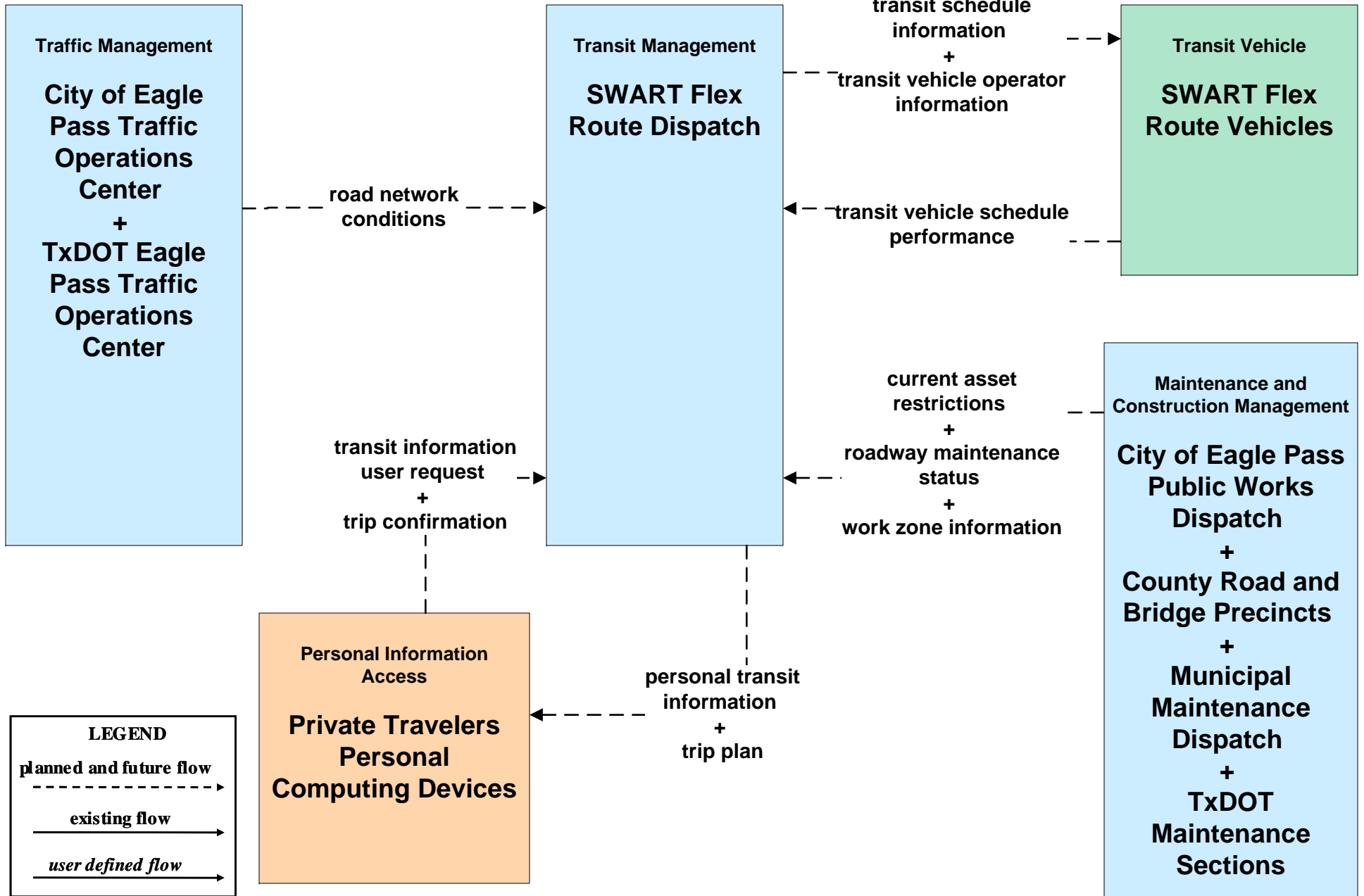
**AD2 - ITS Data Warehouse
MRGDC Data Archive**



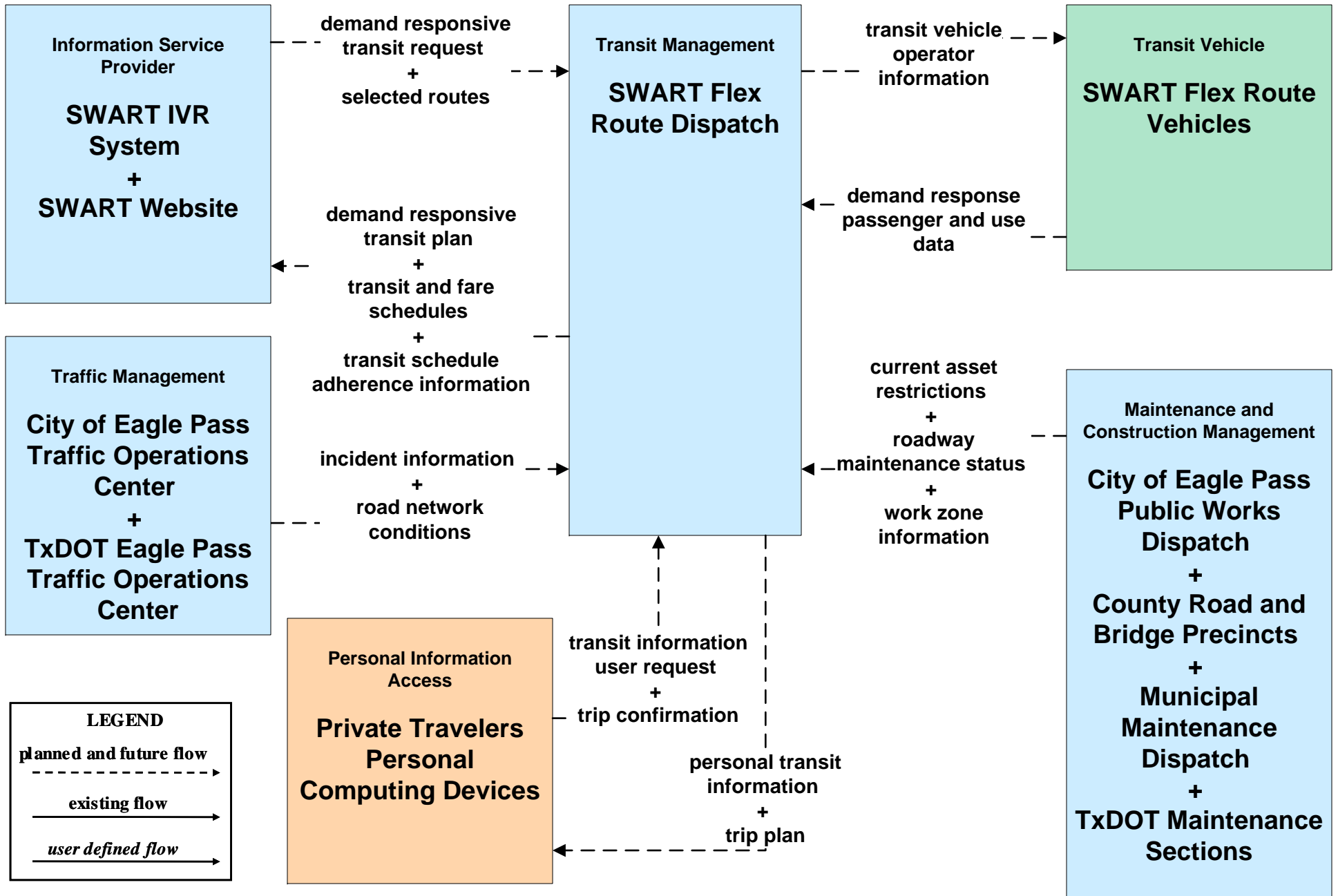
**APTS02 - Transit Fixed-Route Operations
Independent School Districts**



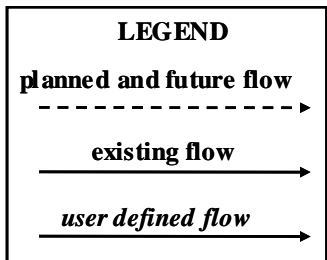
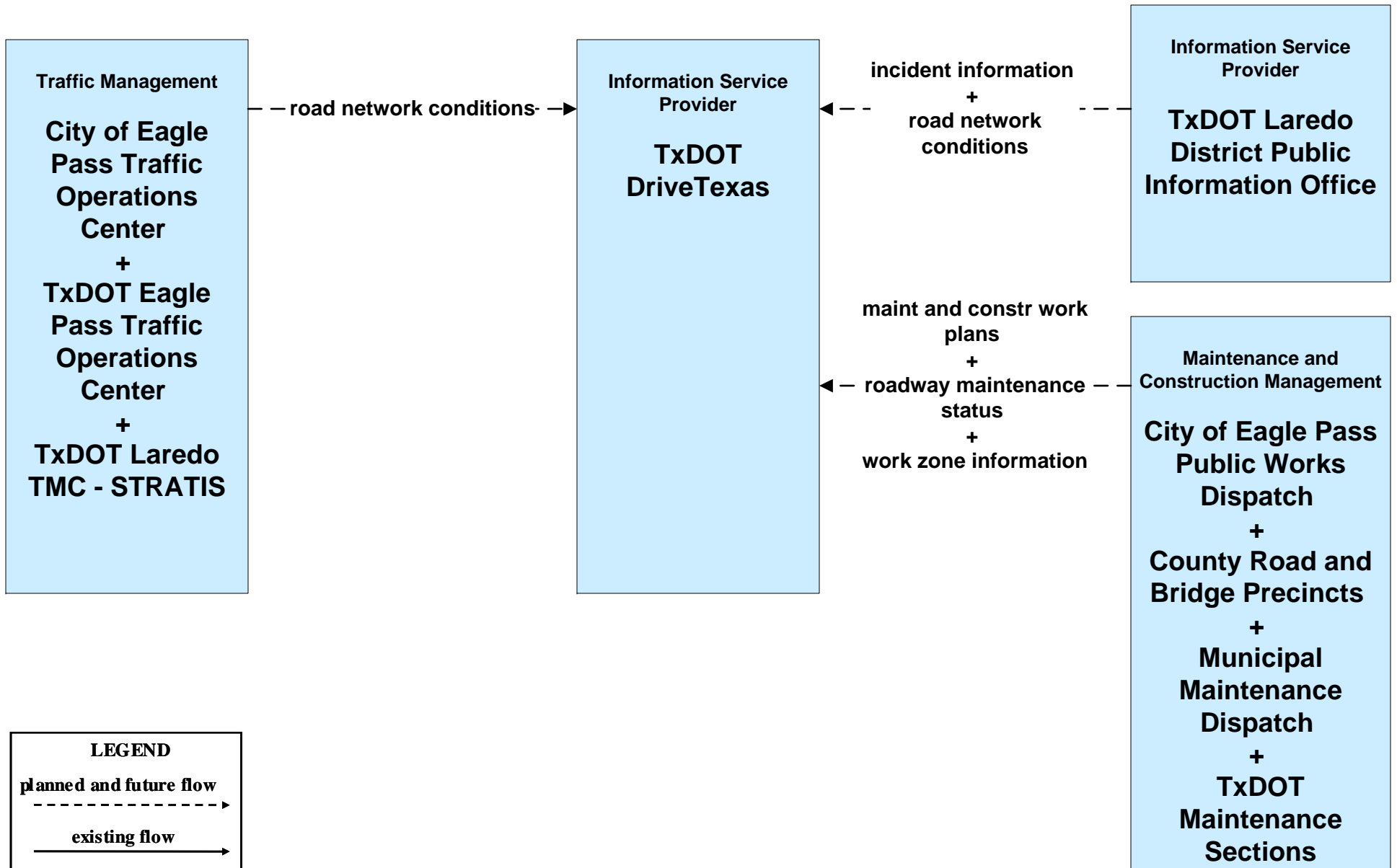
APTS02 - Transit Fixed-Route Operations
Southwest Area Regional Transit District - Flex Routing



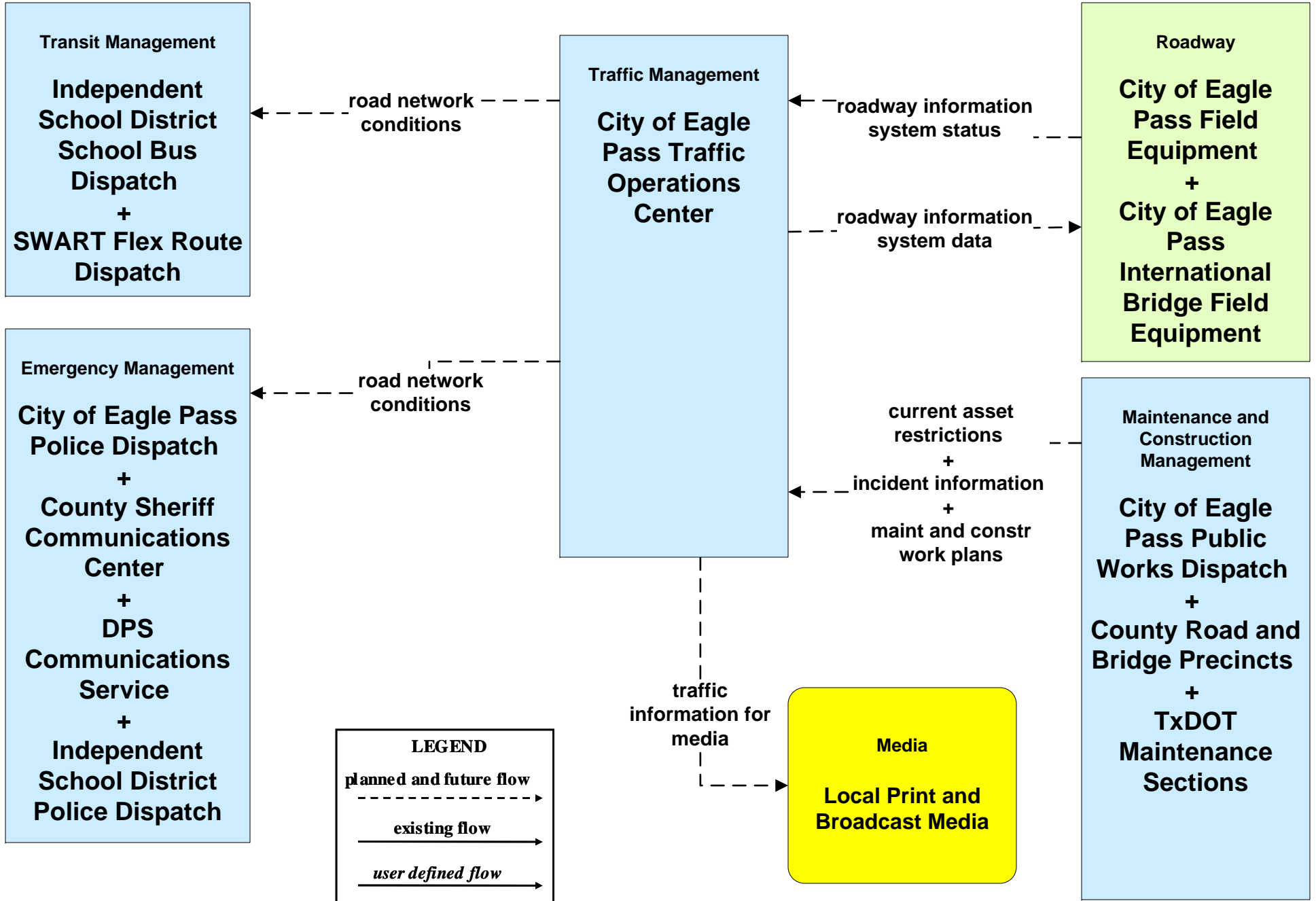
APTS03 - Demand Response Transit Operations Southwest Area Regional Transit District - Flex Routing



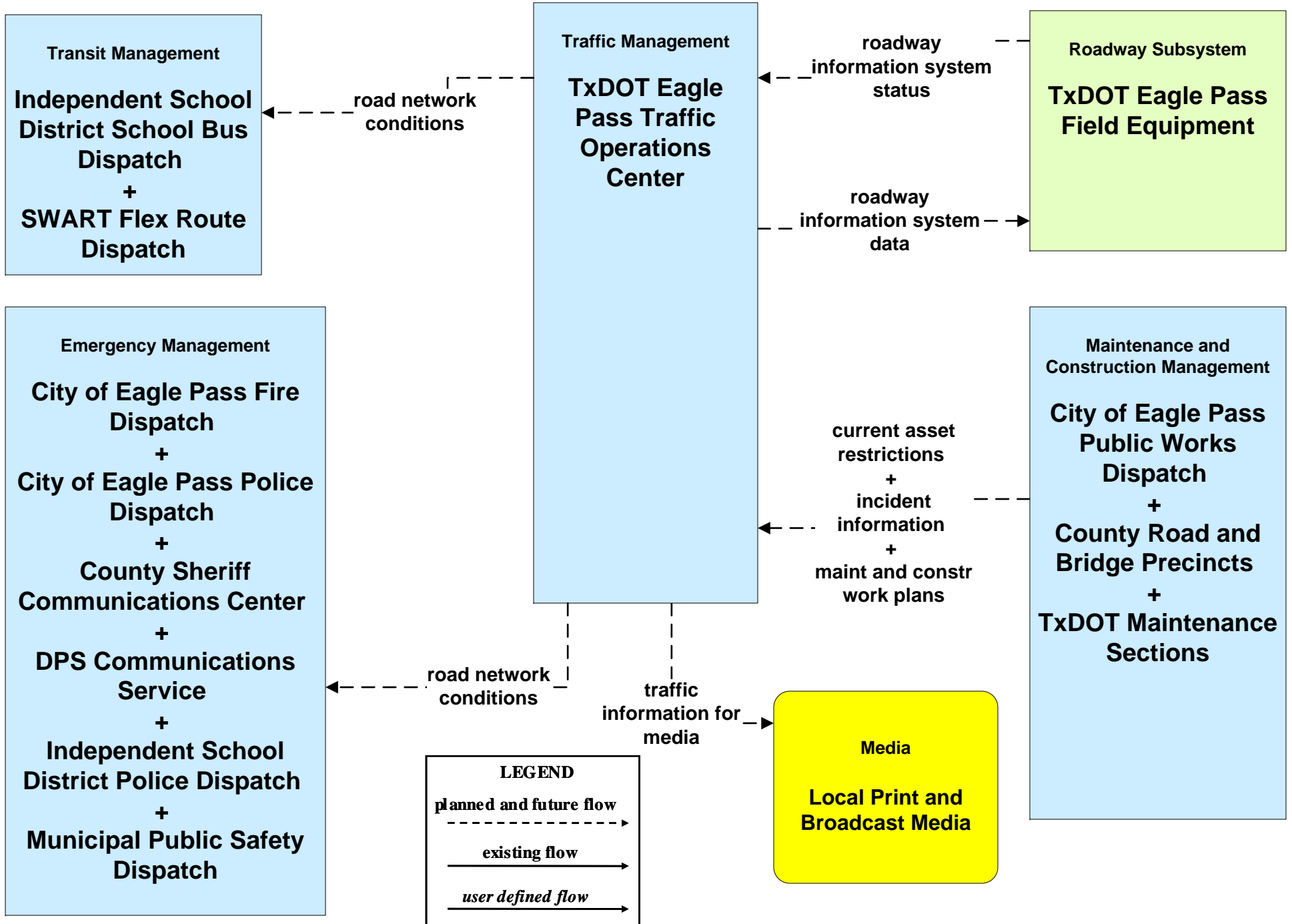
**ATIS01 - Broadcast Traveler Information
TxDOT DriveTexas (Inputs)**



ATMS06 - Traffic Information Dissemination City of Eagle Pass

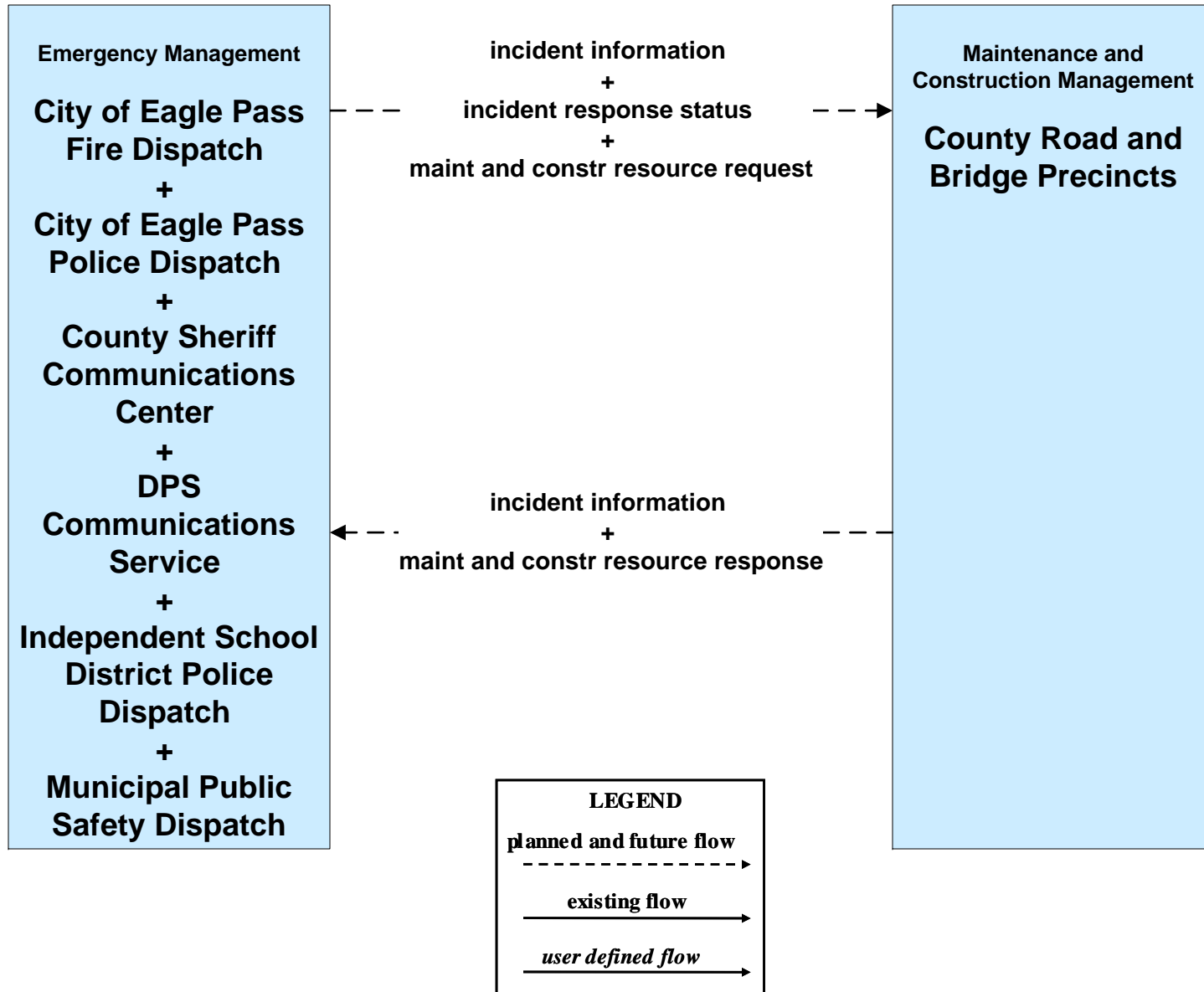


ATMS06 - Traffic Information Dissemination TxDOT Eagle Pass

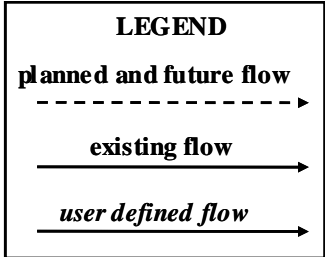
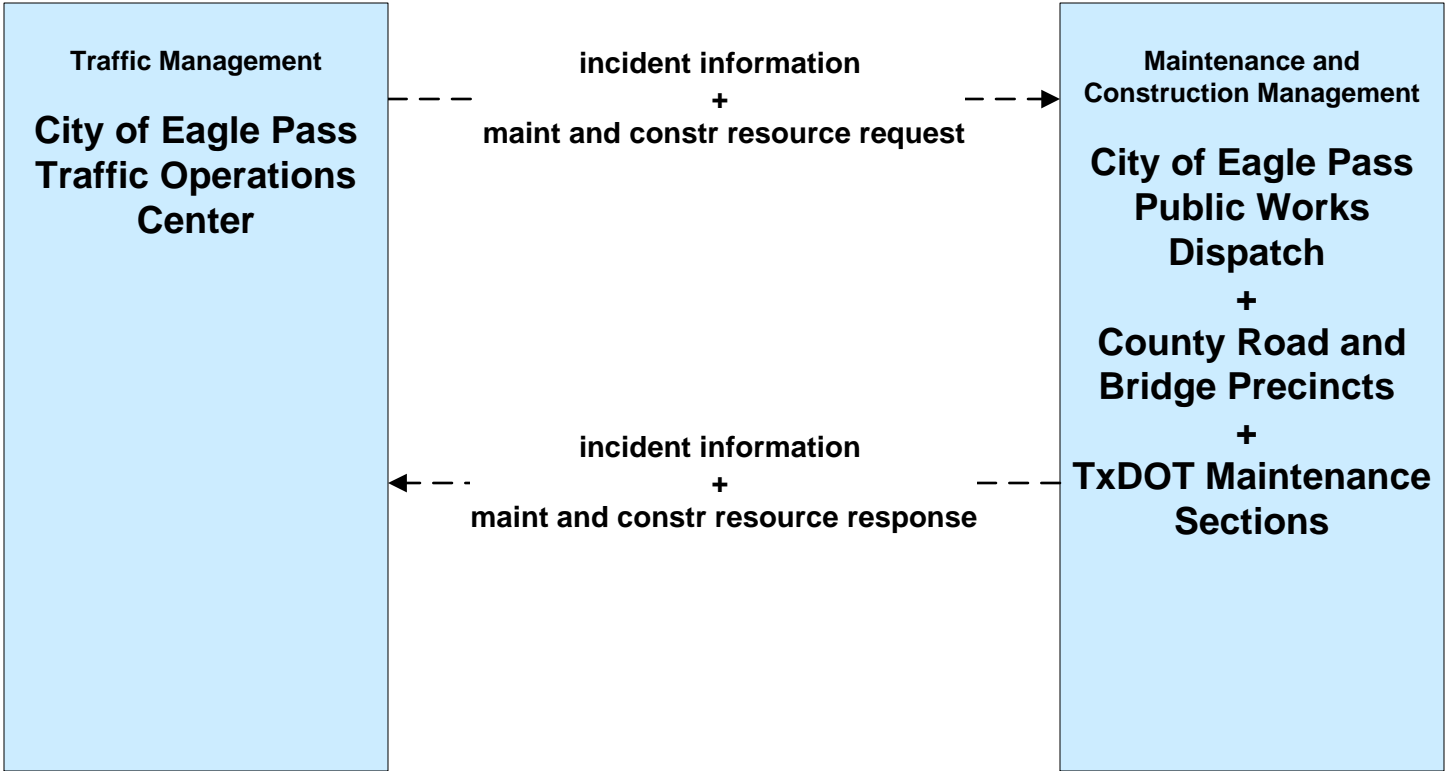


ATMS08 - Traffic Incident Management System

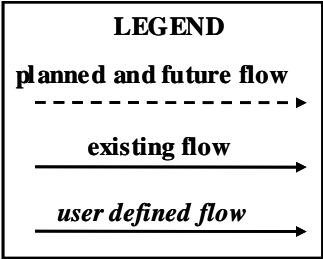
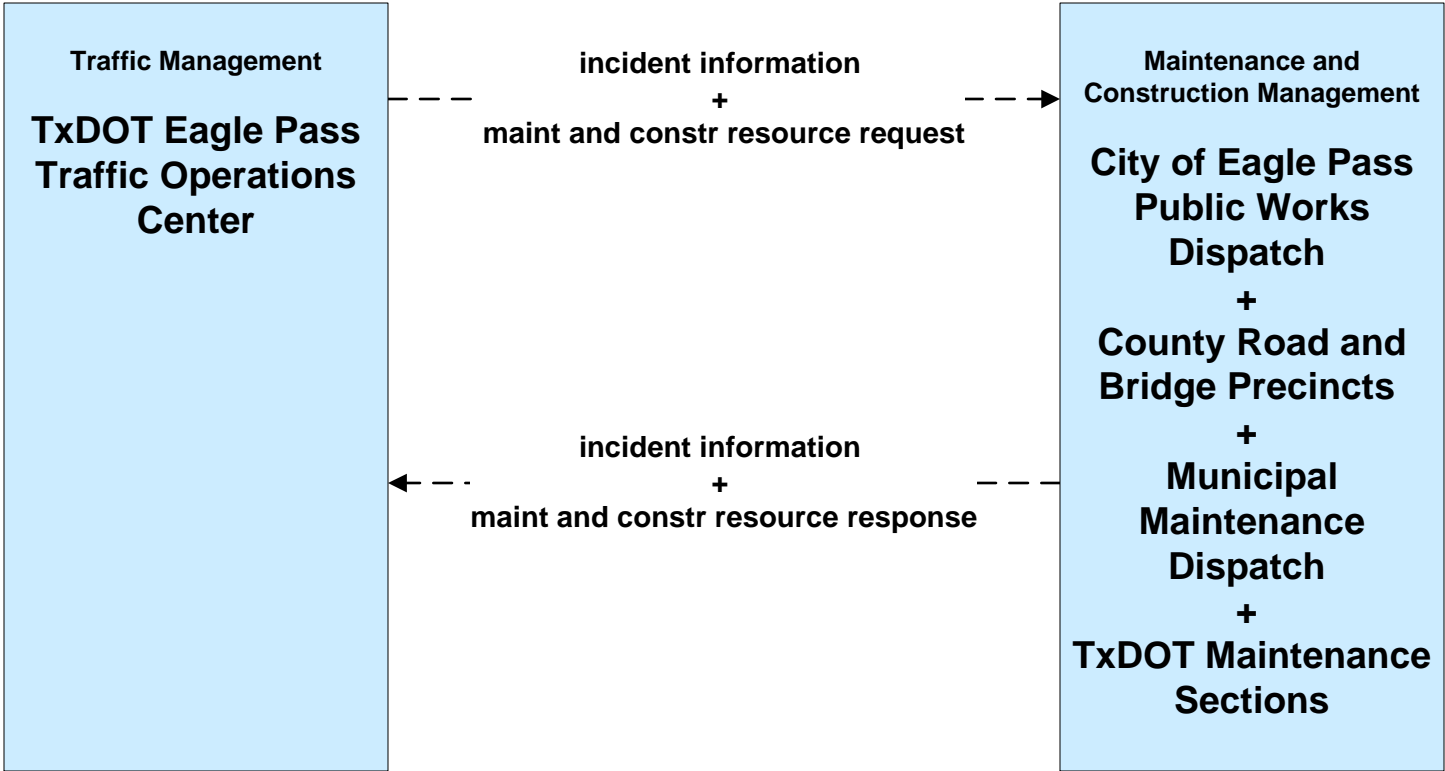
EM to MCM - EM to County Road and Bridge Precincts



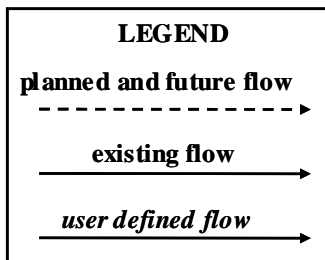
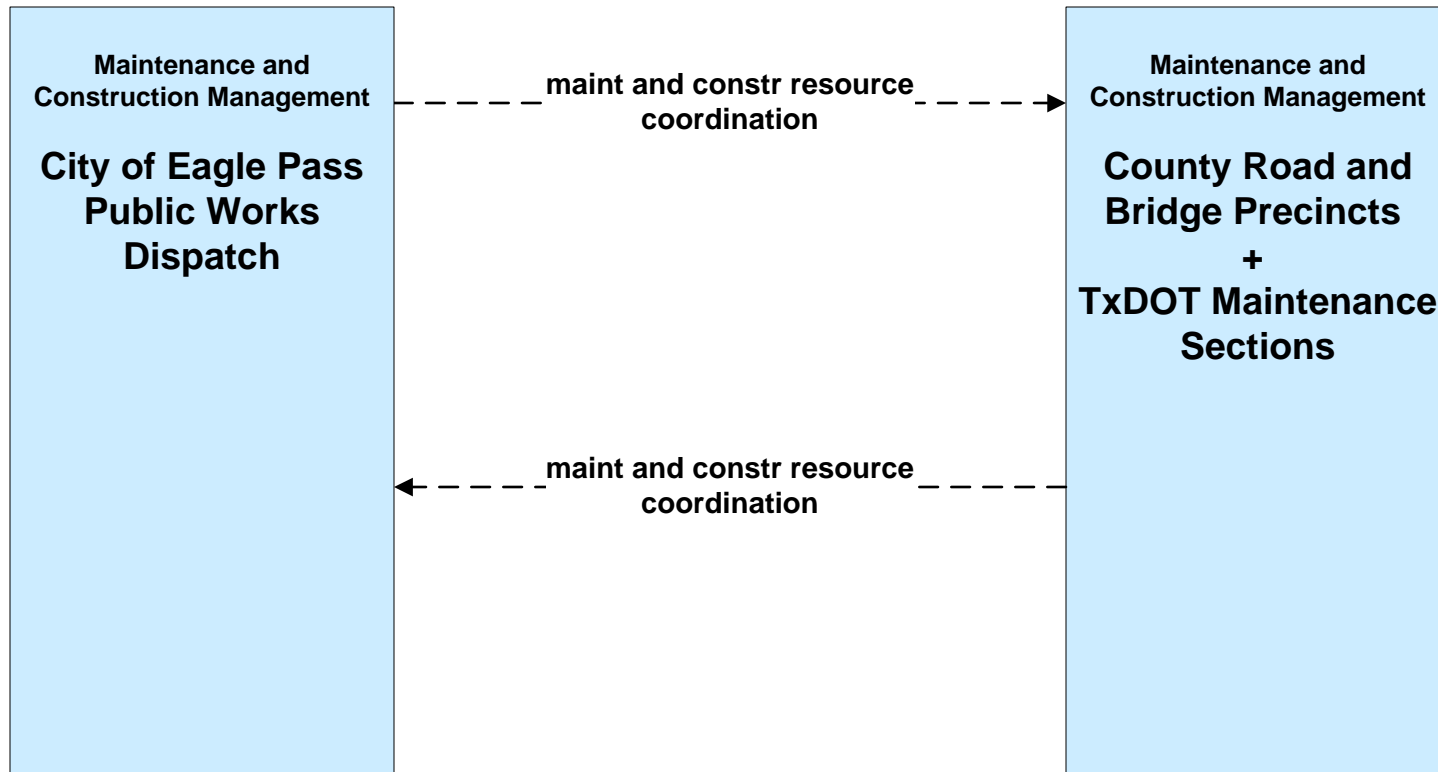
**ATMS08 - Traffic Incident Management System
TM to MCM - City of Eagle Pass**



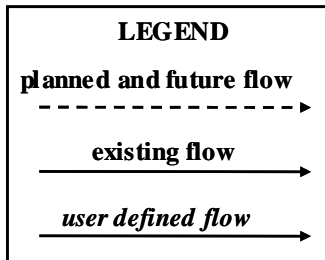
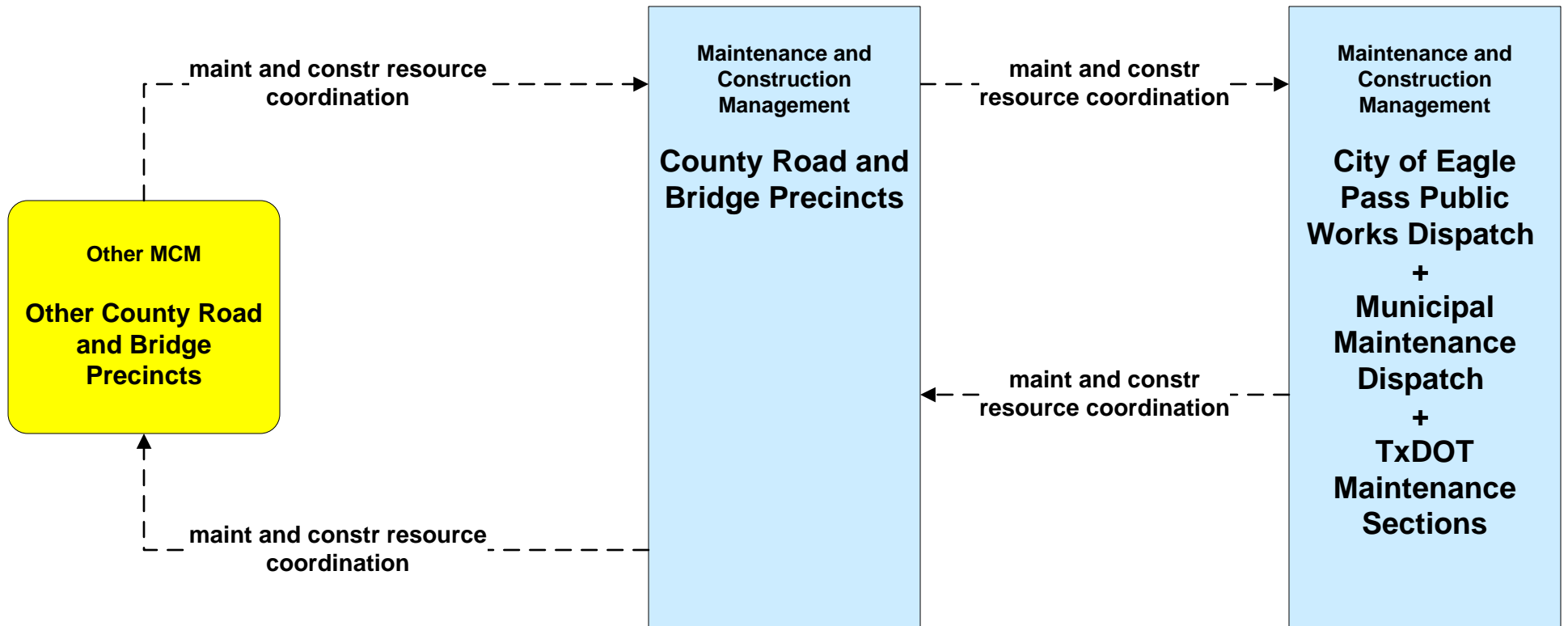
ATMS08 - Traffic Incident Management System
TM to MCM - TM to TxDOT Eagle Pass



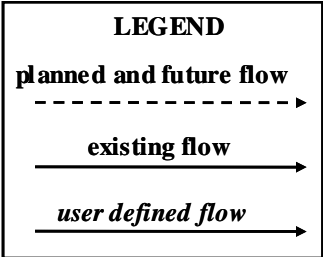
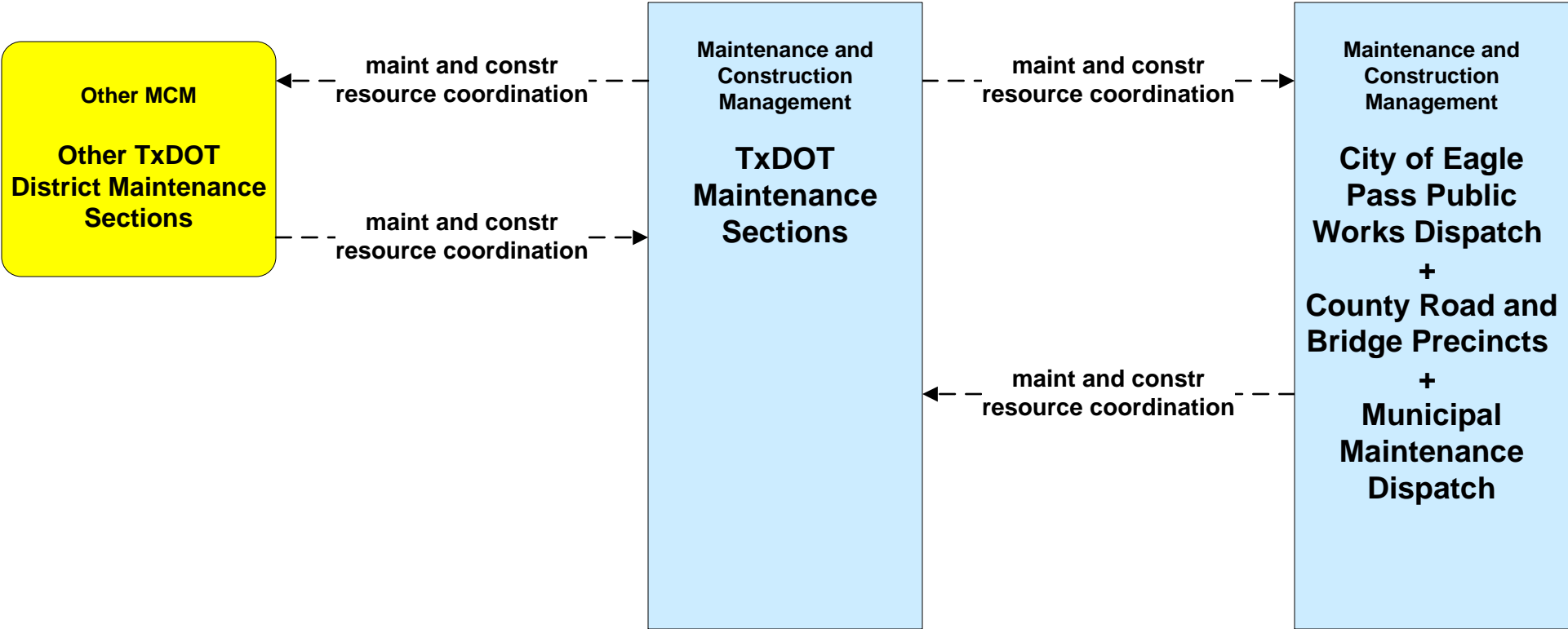
**ATMS08 – Traffic Incident Management System
MCM to MCM - City of Eagle Pass**



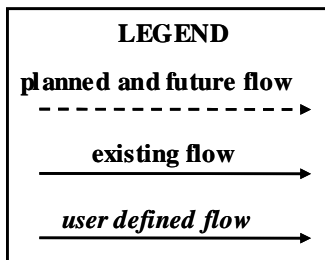
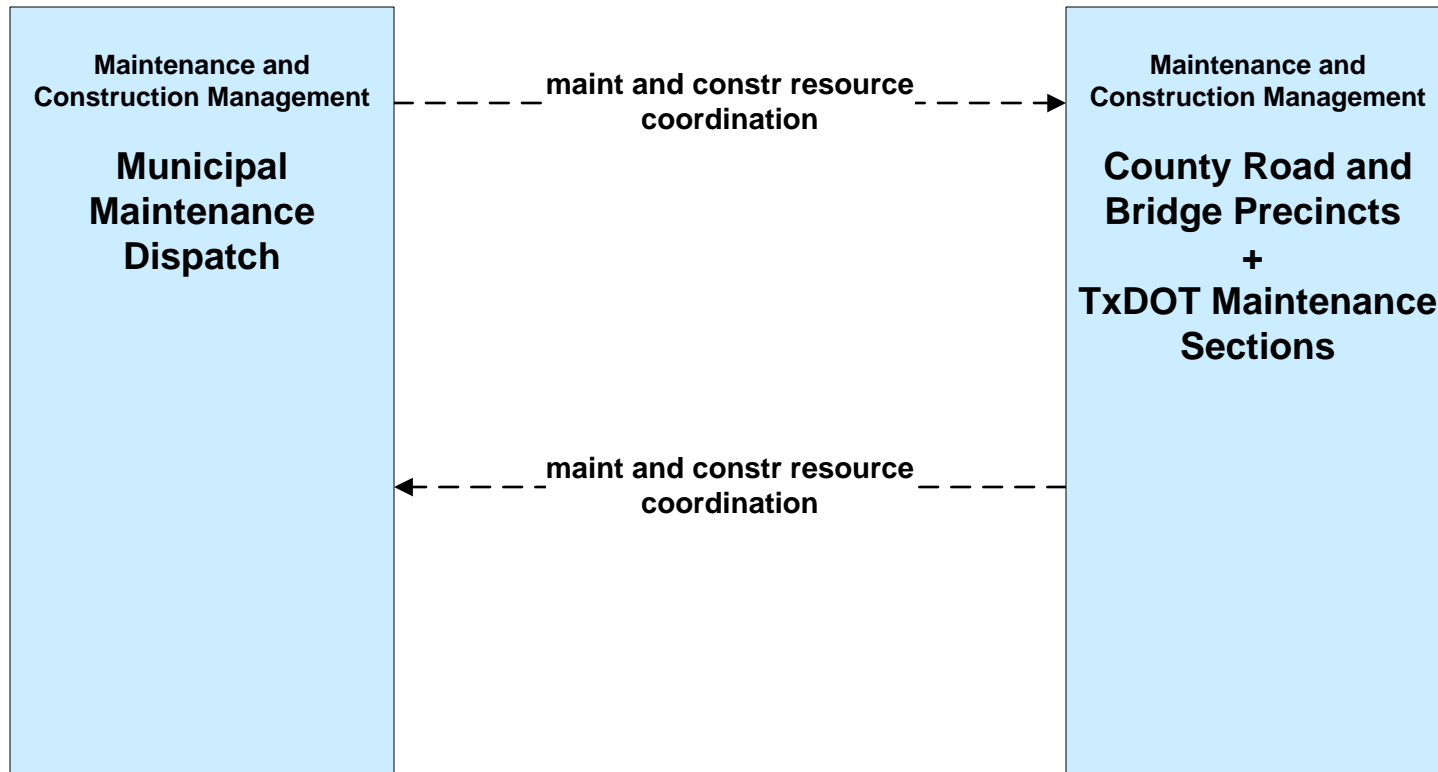
**ATMS08 – Traffic Incident Management System
MCM to MCM - County Road and Bridge**



**ATMS08 - Traffic Incident Management System
MCM to MCM - TxDOT**

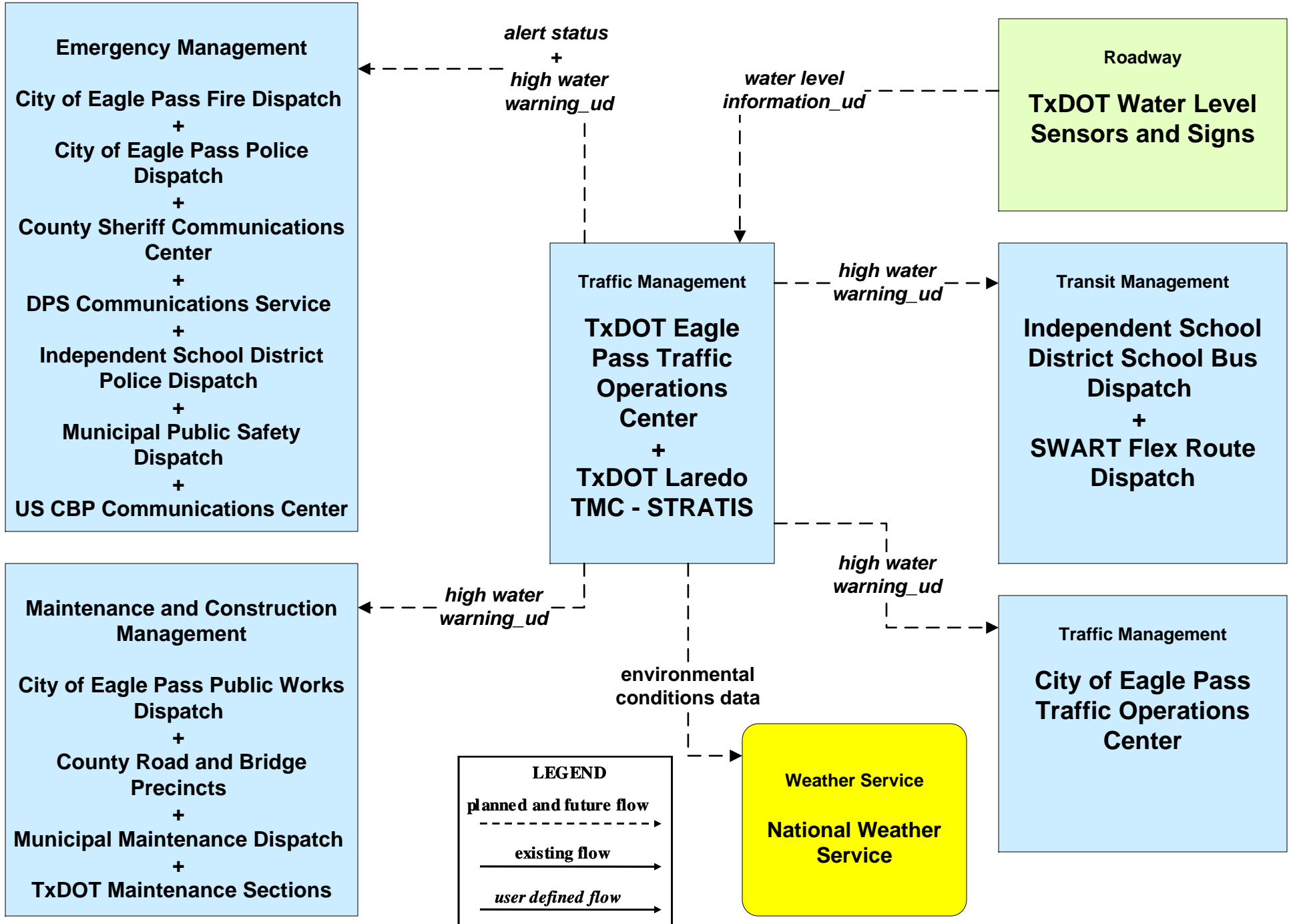


**ATMS08 – Traffic Incident Management System
MCM to MCM – Municipal Maintenance**

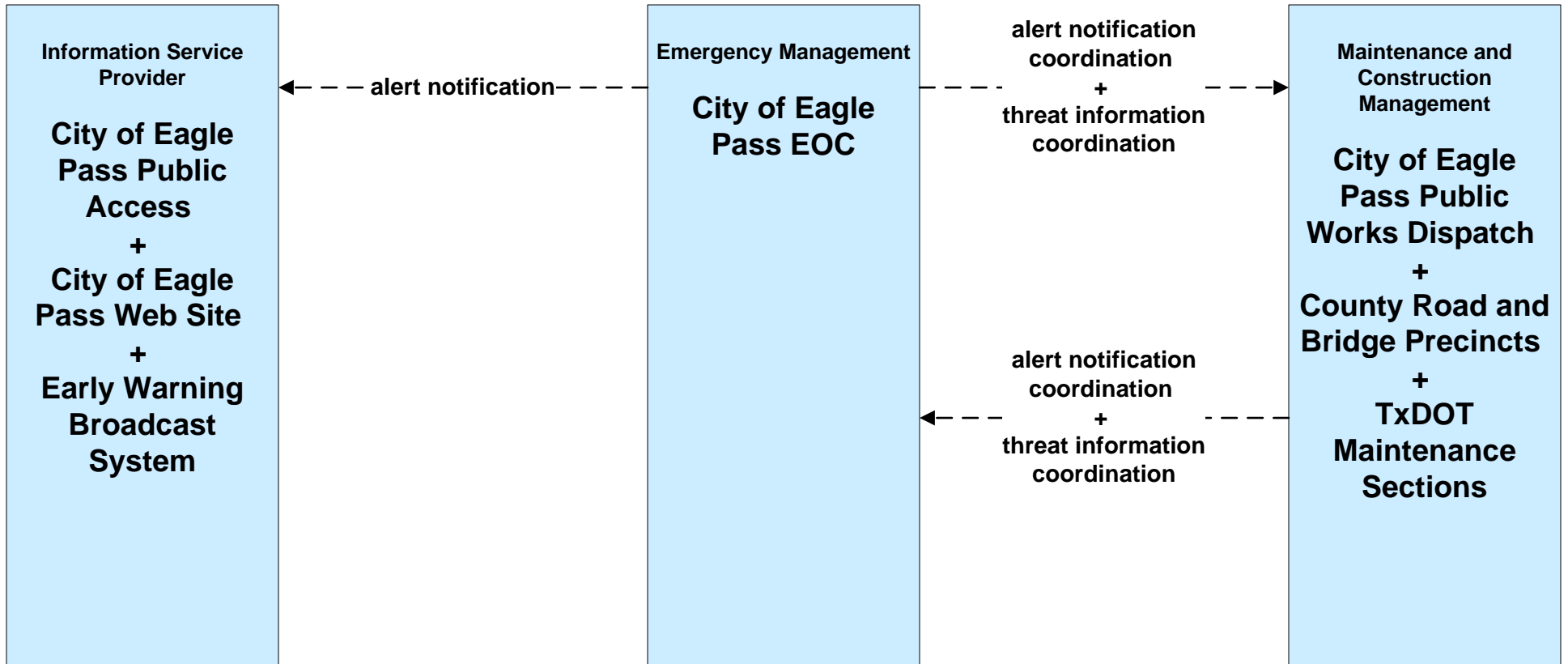


ATMS08 – Traffic Incident Management System

Flood Warning - TxDOT Eagle Pass

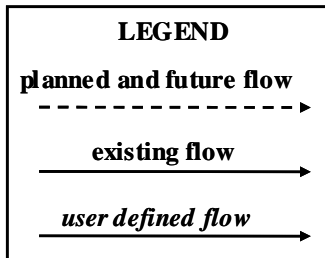


**EM06 - Wide-Area Alert
City of Eagle Pass EOC (2 of 2)**

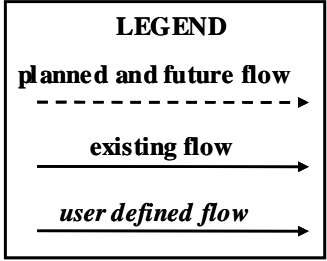
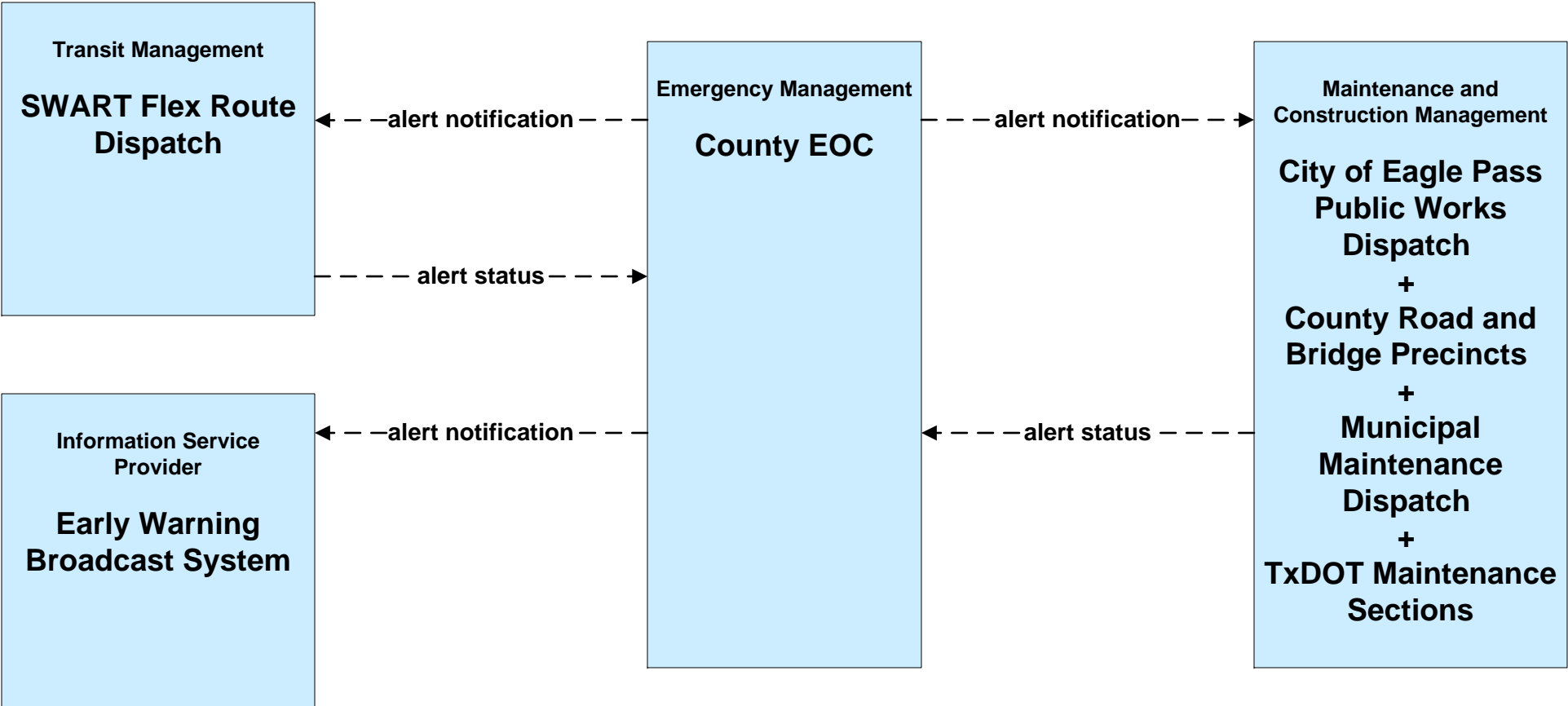


incident information for-
media →

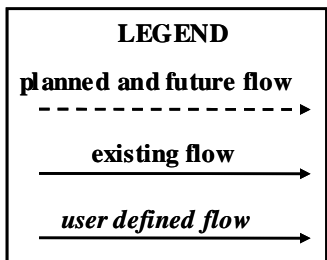
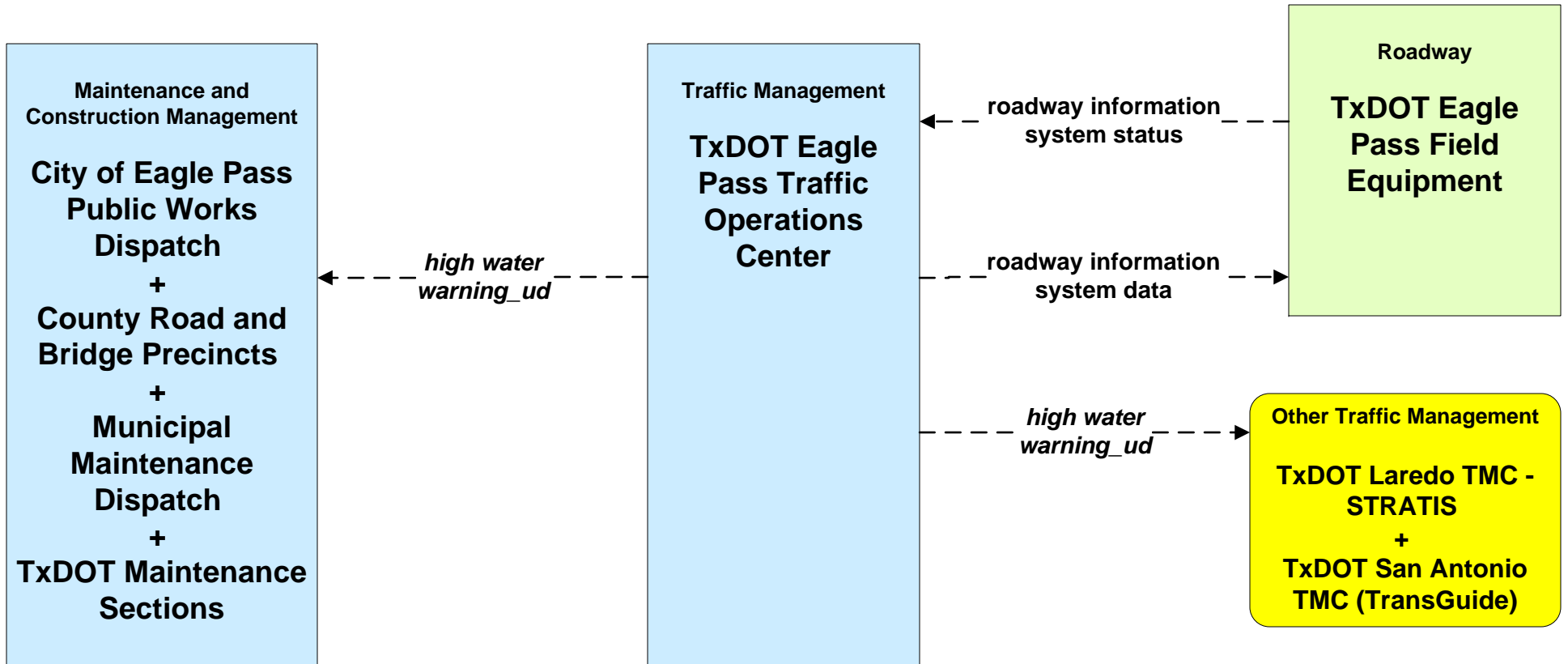
Media
Local Print and Broadcast Media



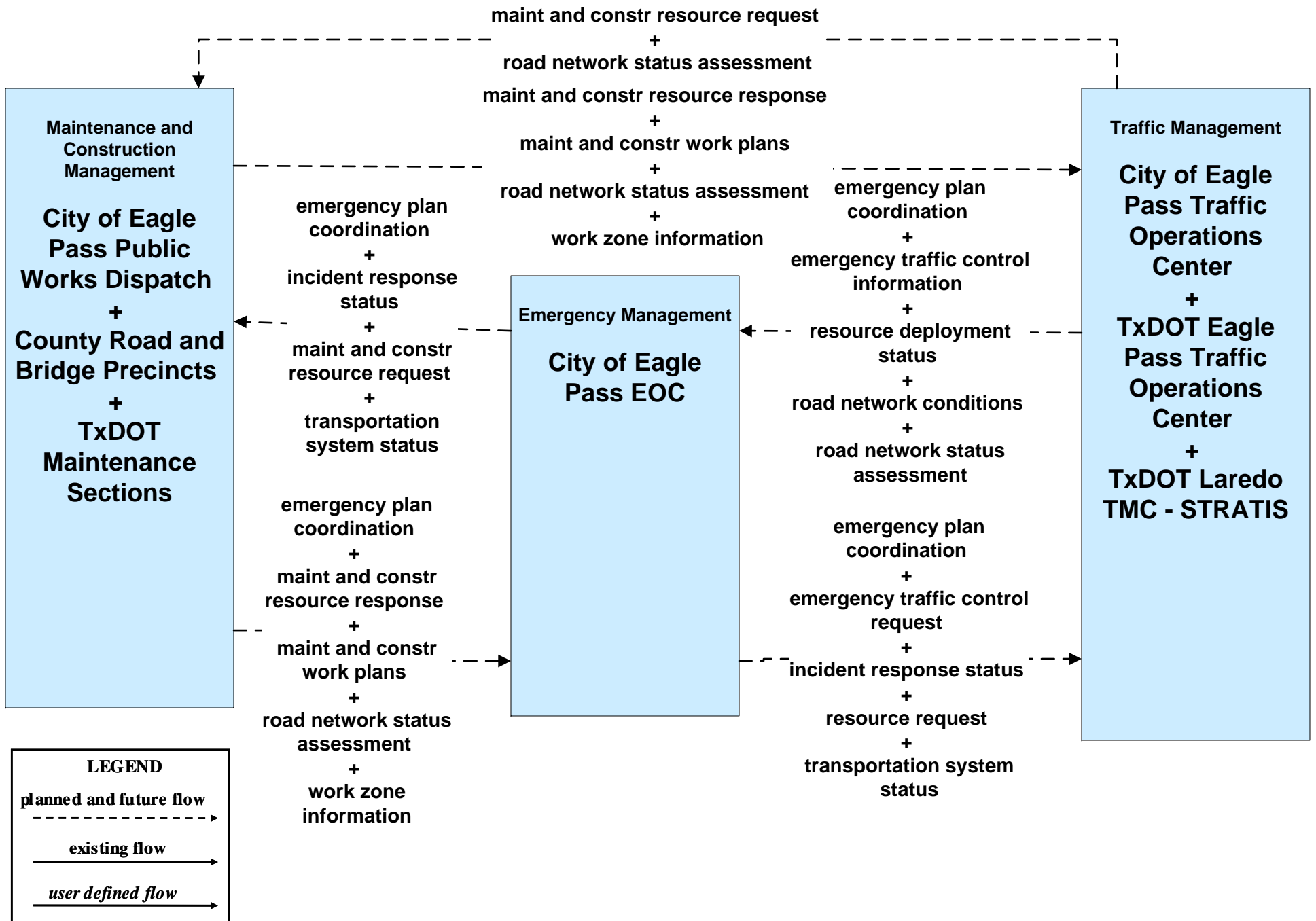
**EM06 - Wide-Area Alert
County EOC (2 of 2)**



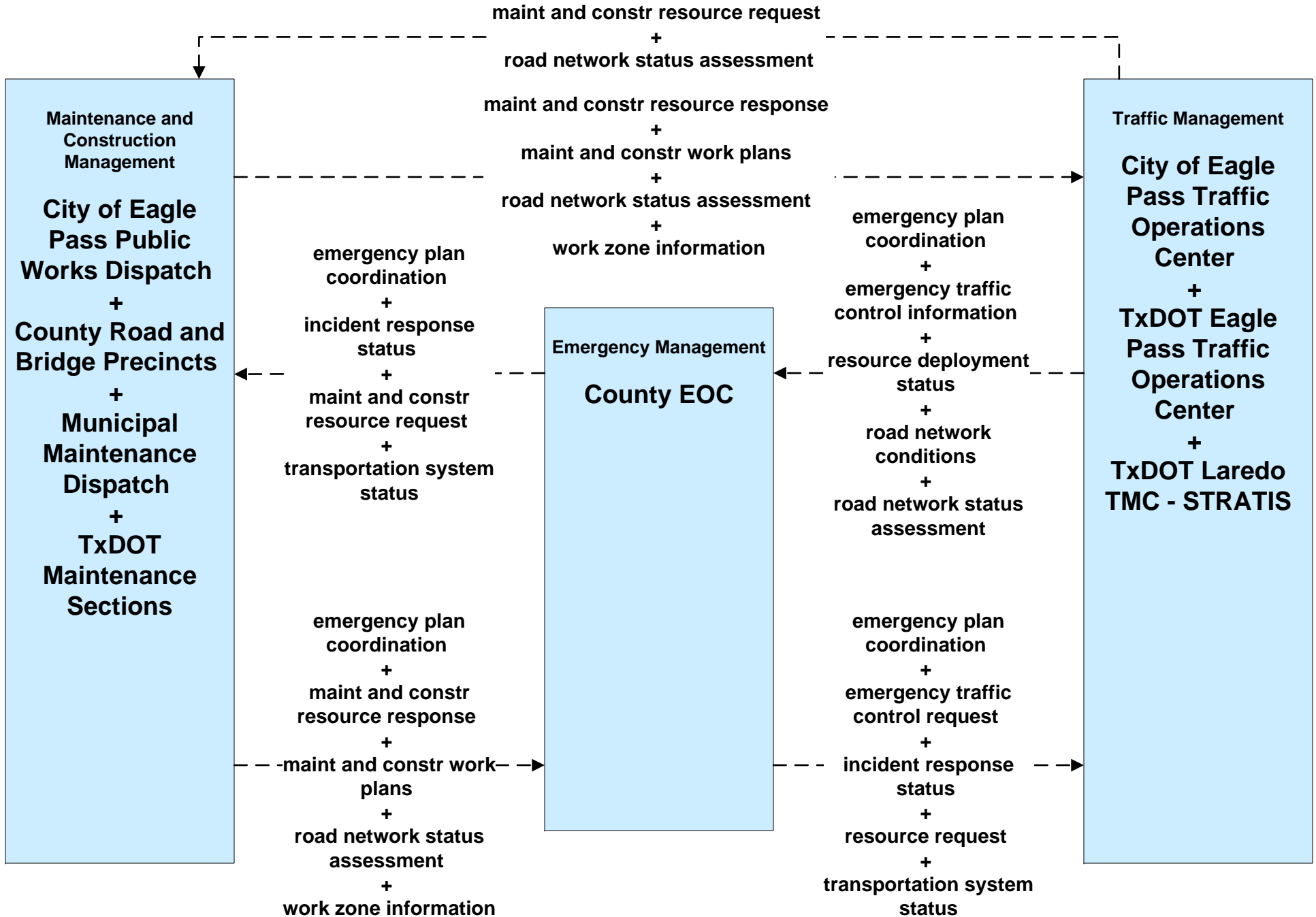
**EM07 - Early Warning System
TxDOT Flood Monitoring (2 of 2)**



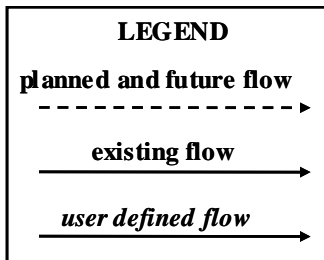
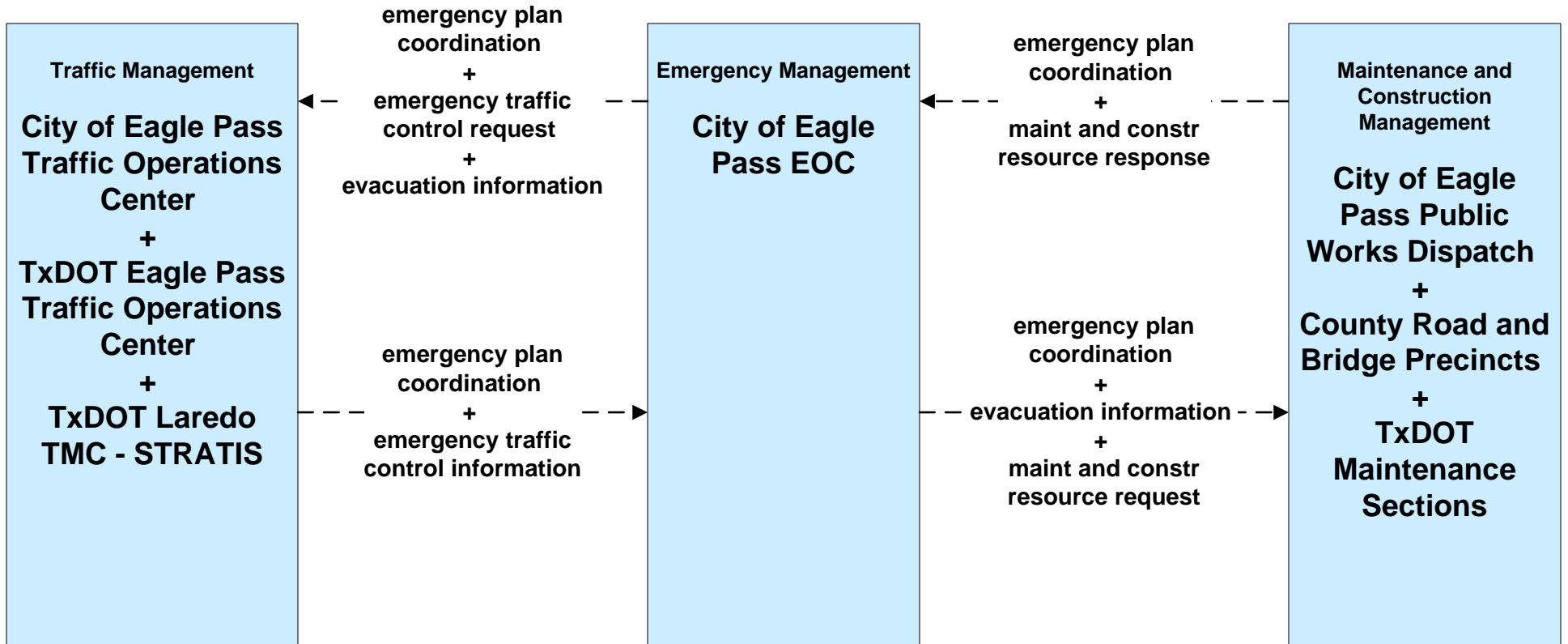
**EM08 - Disaster Response and Recovery
City of Eagle Pass EOC (1 of 2)**



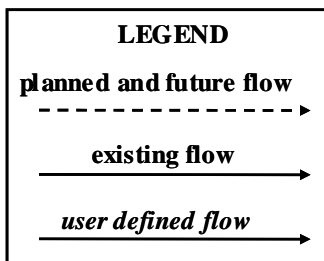
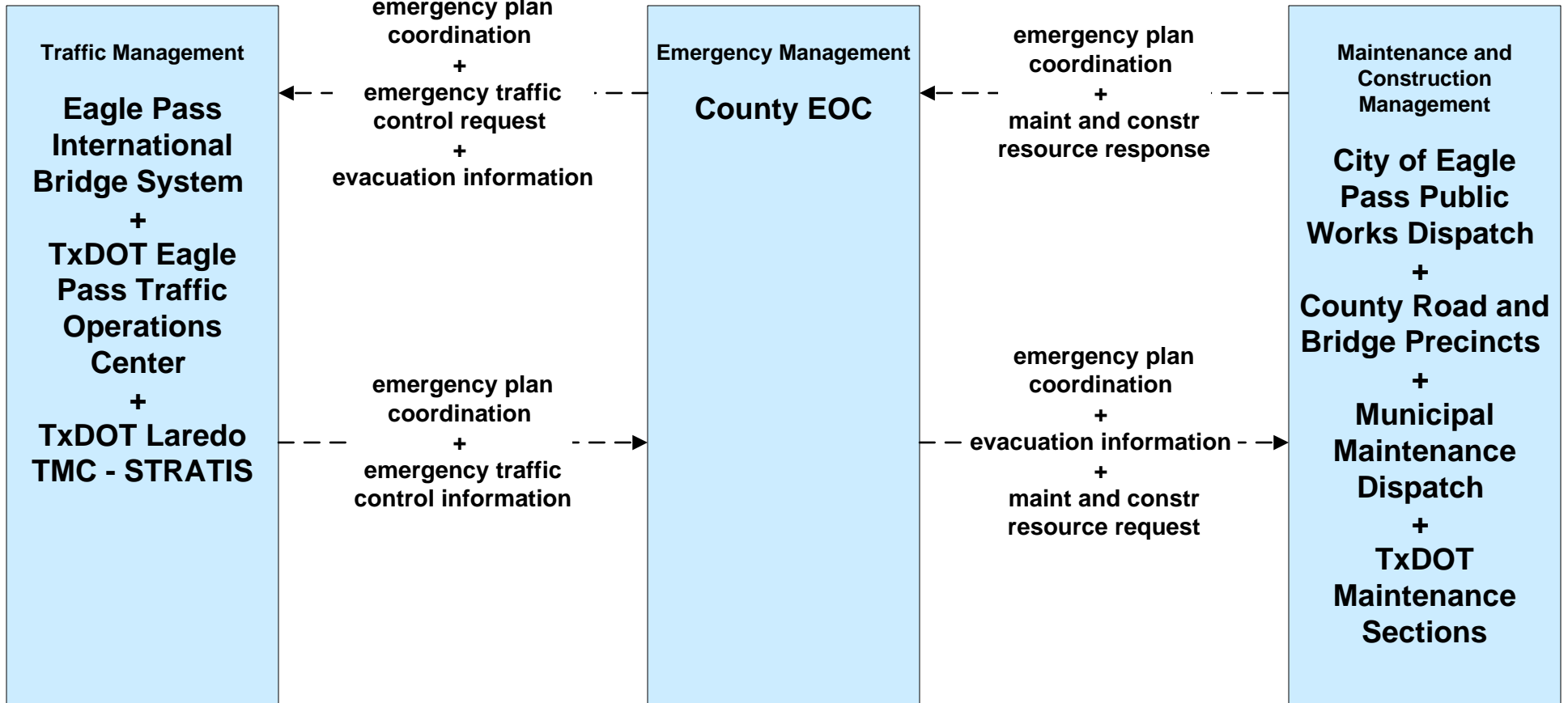
**EM08 - Disaster Response and Recovery
County EOC (1 of 2)**



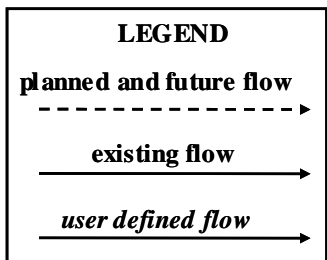
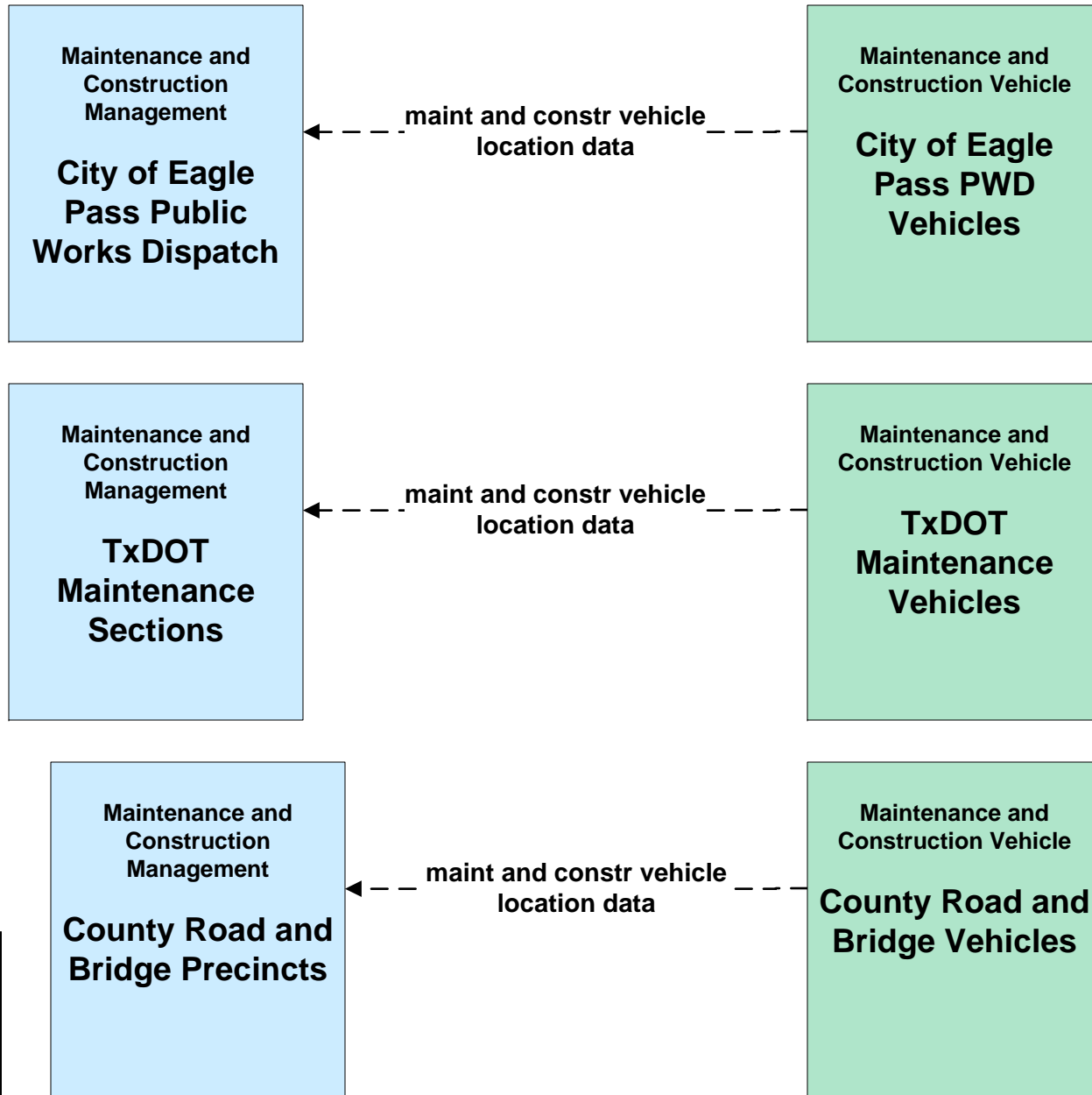
**EM09 - Evacuation and Reentry Management
City of Eagle Pass EOC (2 of 2)**



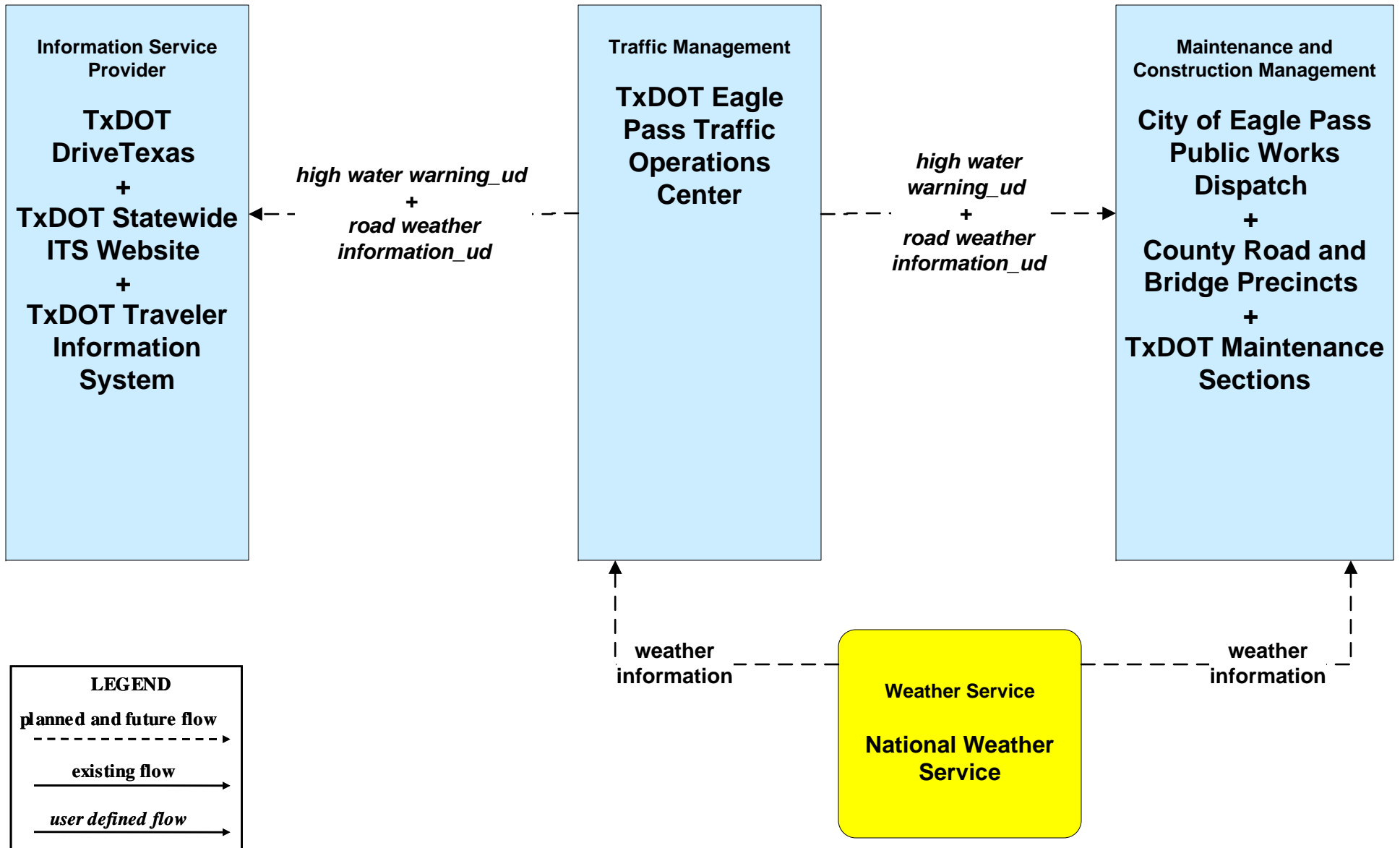
**EM09 - Evacuation and Reentry Management
County EOC (2 of 2)**



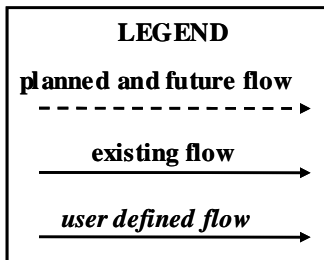
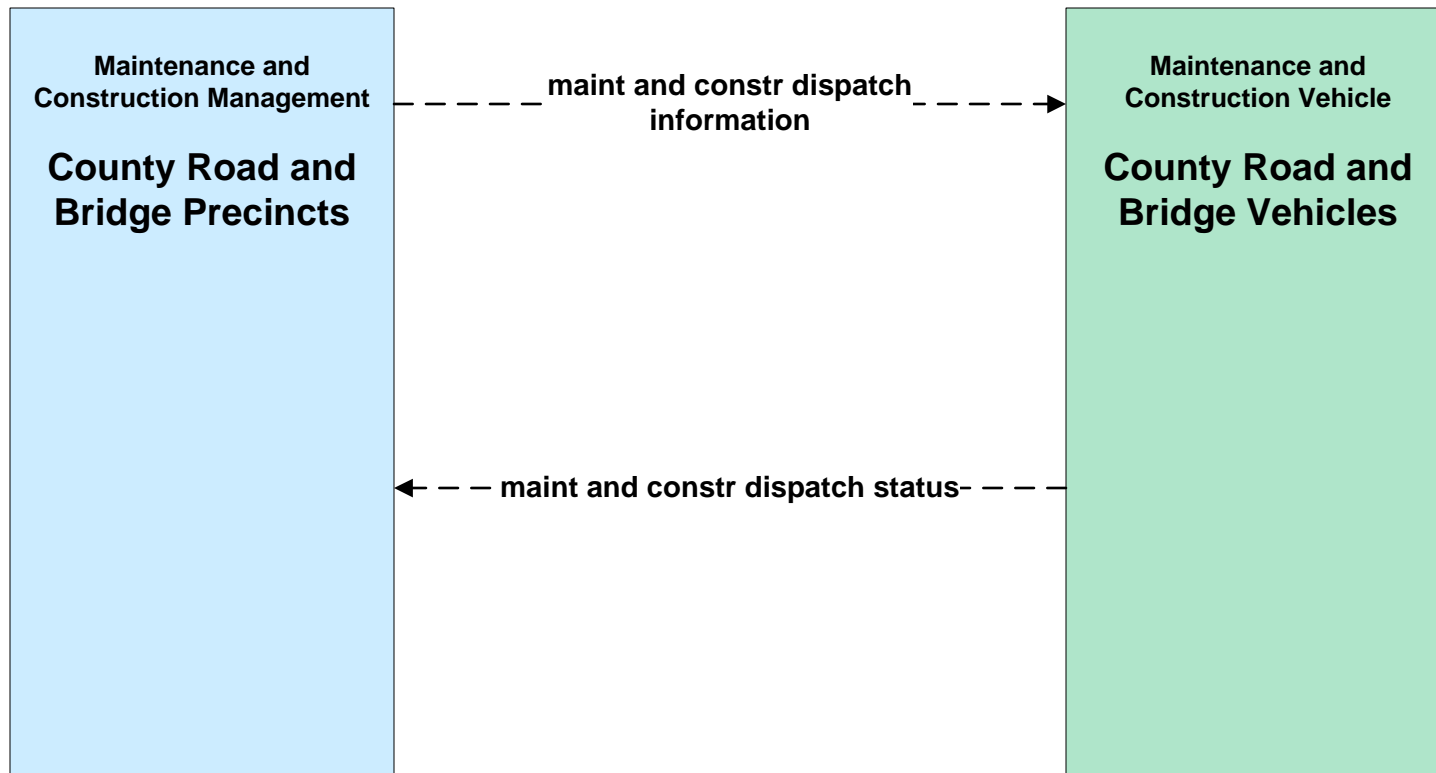
MC01 - Maintenance and Construction Vehicle and Equipment Tracking



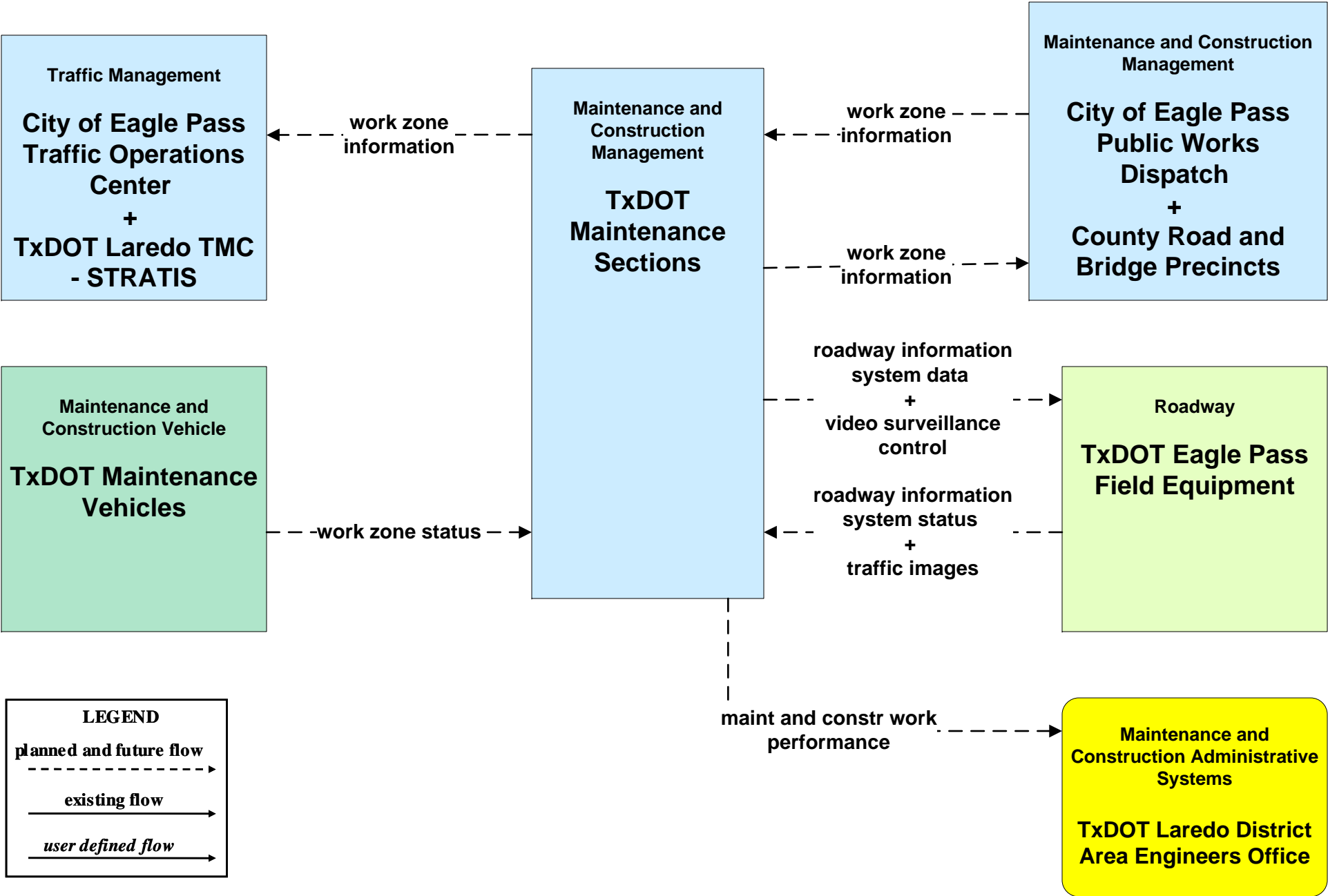
**MC04 - Weather Information Processing and Distribution
TxDOT Eagle Pass (1 of 2)**



**MC07 - Roadway Maintenance and Construction
County Road and Bridge Precincts**



**MC08 - Work Zone Management
TxDOT Maintenance Sections (1 of 2)**



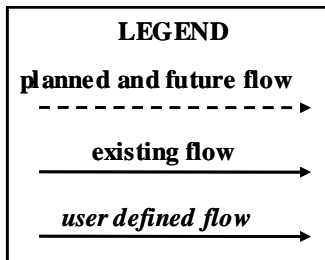
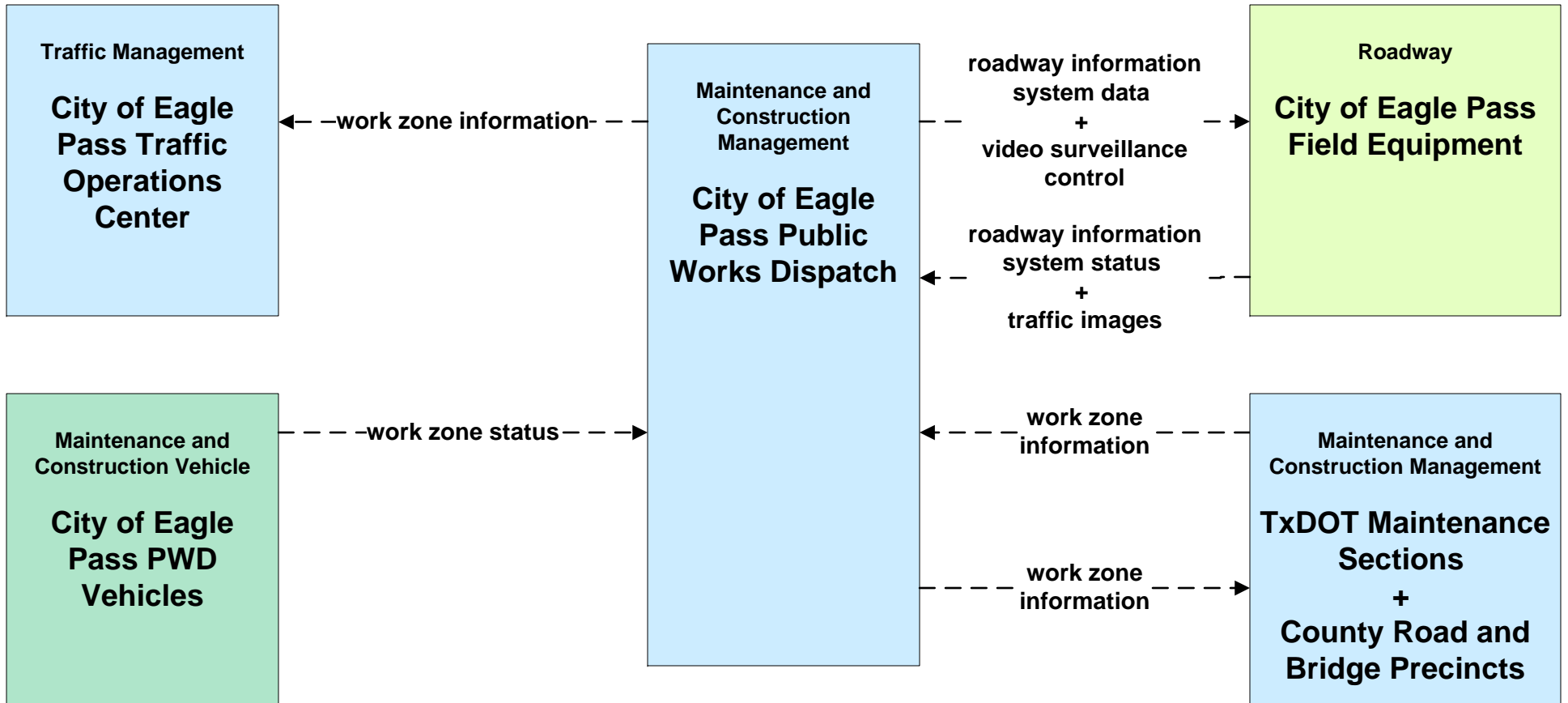
LEGEND

planned and future flow
- - - - ->

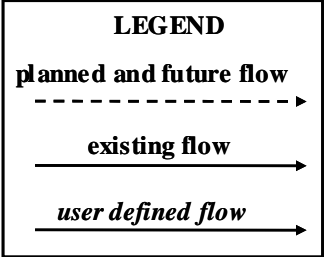
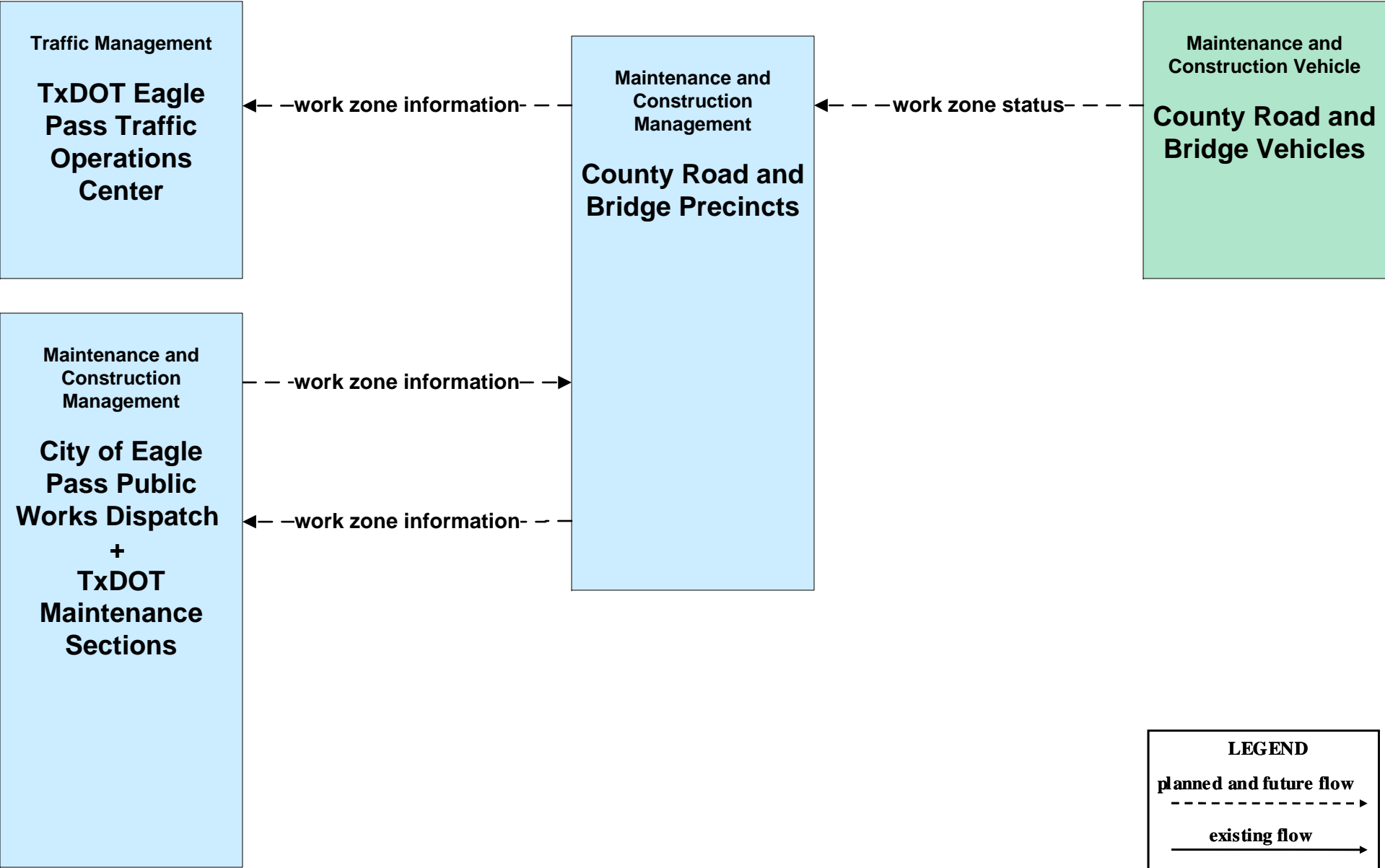
existing flow
—————>

user defined flow
—————>

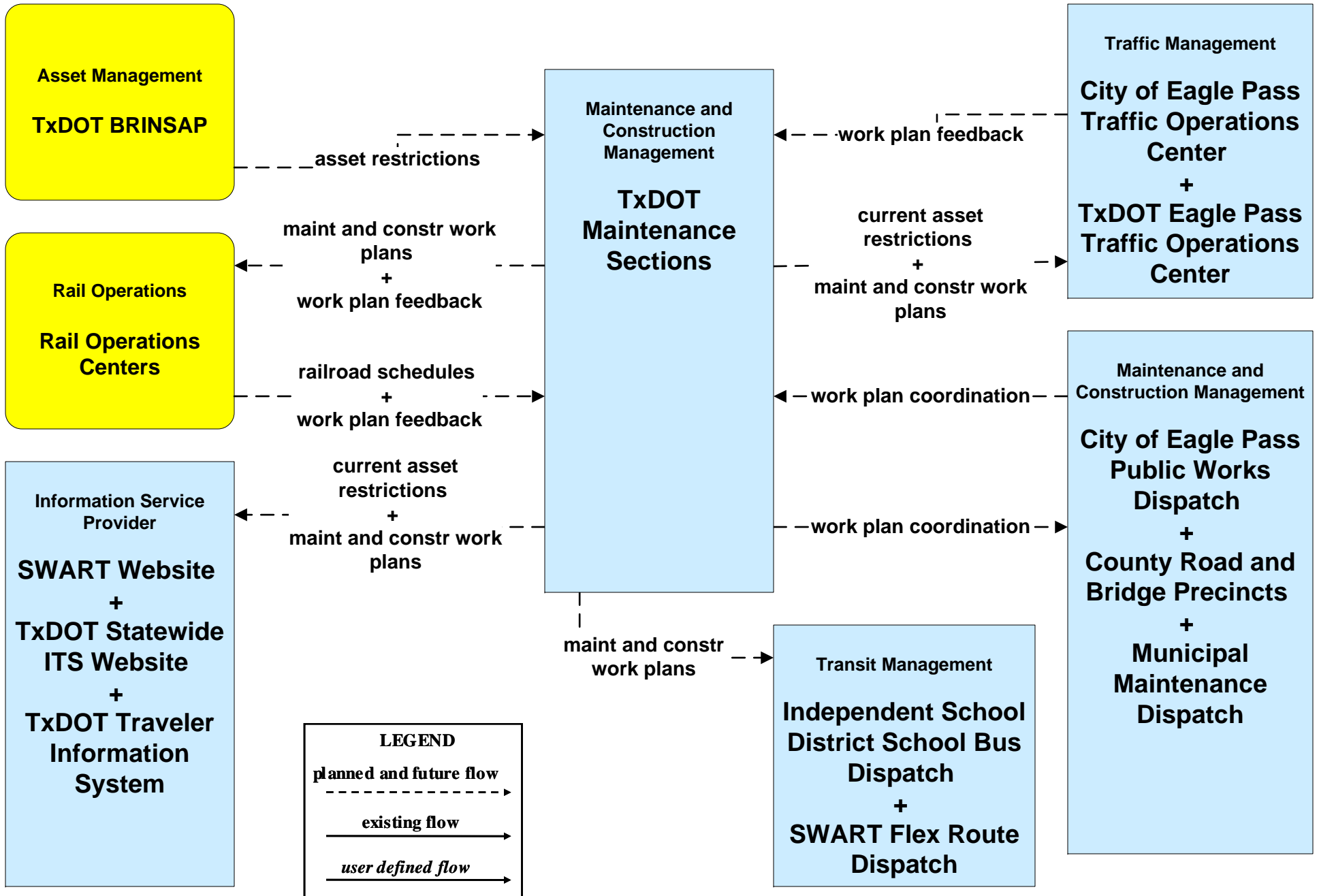
**MC08 - Work Zone Management
City of Eagle Pass Maintenance (1 of 2)**



**MC08 - Work Zone Management
County Road and Bridge Precincts**



**MC10 - Maintenance and Construction Activity Coordination
TxDOT Maintenance Sections (1 of 2)**



**MC10 - Maintenance and Construction Activity Coordination
City of Eagle Pass (1 of 2)**

