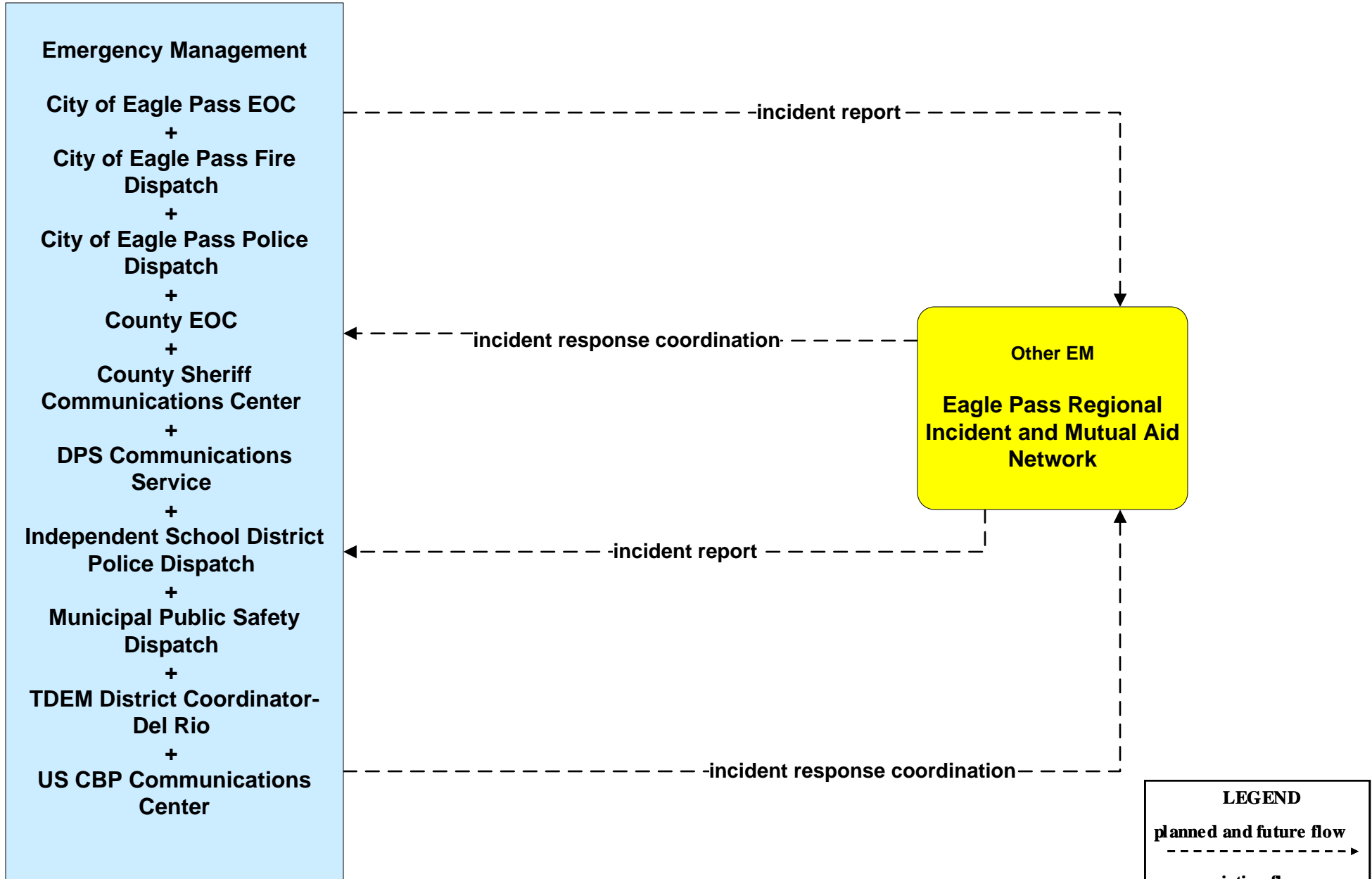


**EM01 - Emergency Call-Taking and Dispatch
Eagle Pass Regional Incident and Mutual Aid Network**



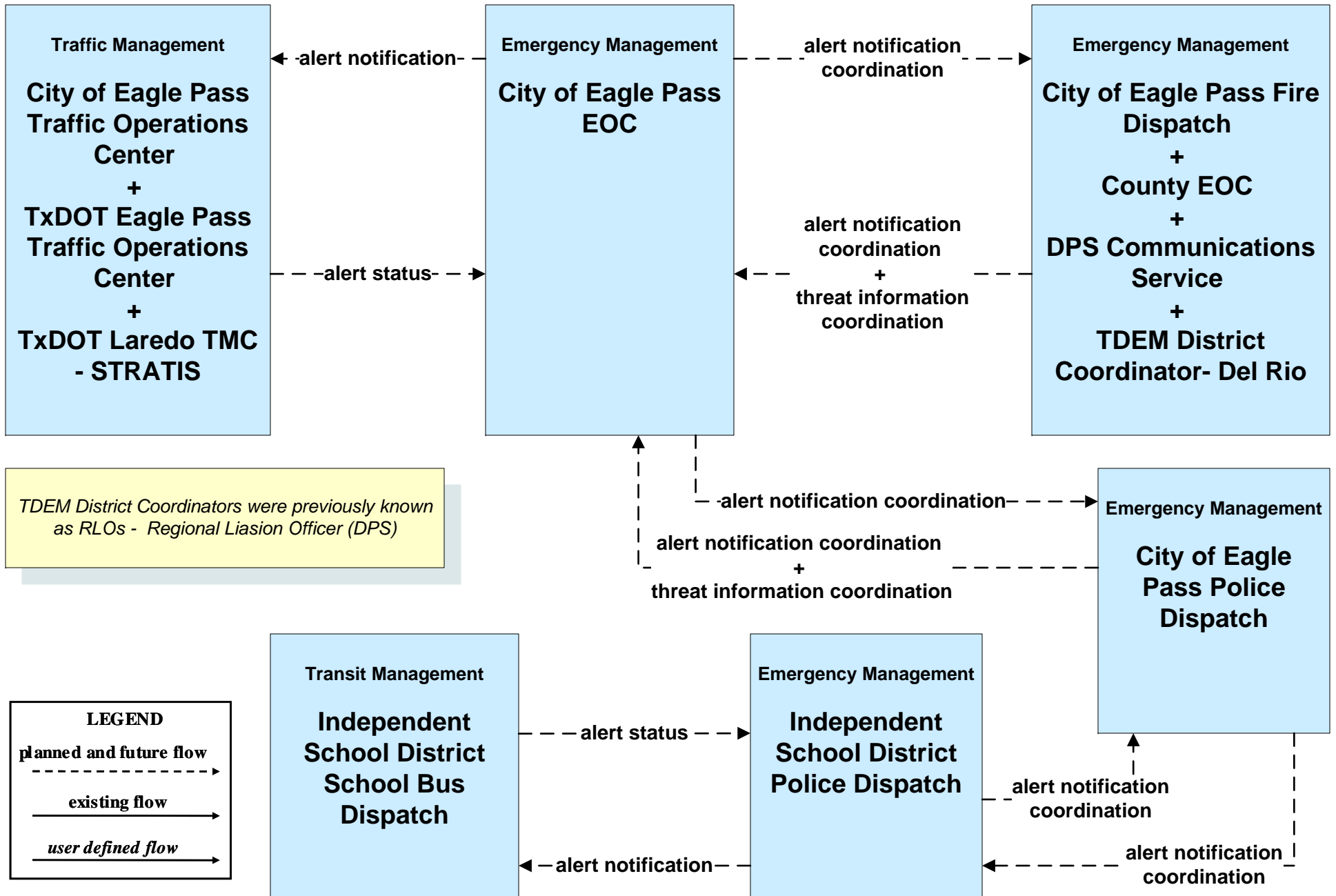
City of Eagle Pass EOC - incident report -> Eagle Pass Regional Incident and Mutual Aid Network

Other EM - incident response coordination -> Emergency Management

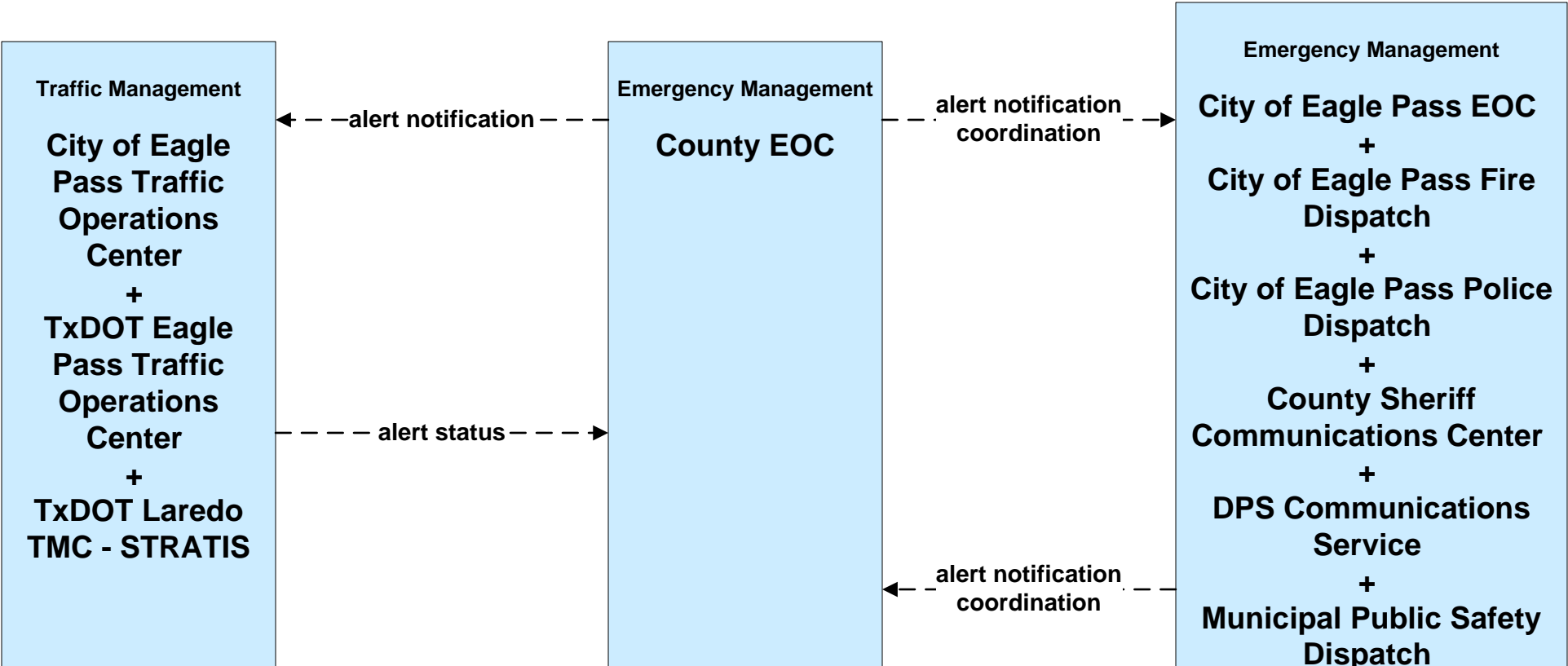
Other EM - incident report -> Independent School District Police Dispatch

US CBP Communications Center - incident response coordination -> Eagle Pass Regional Incident and Mutual Aid Network

**EM06 - Wide-Area Alert
City of Eagle Pass EOC (1 of 2)**



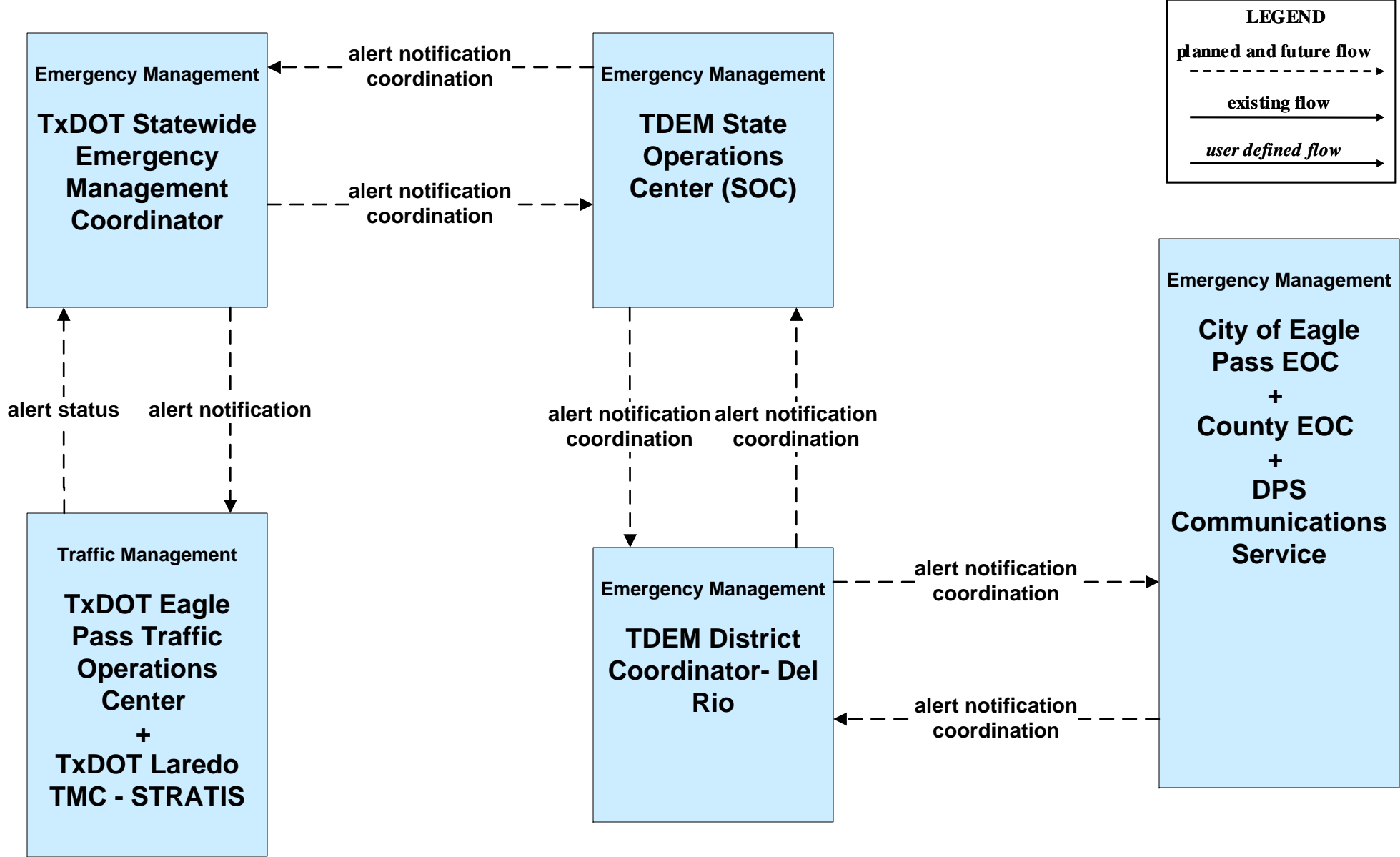
**EM06 - Wide-Area Alert
County EOC (1 of 2)**



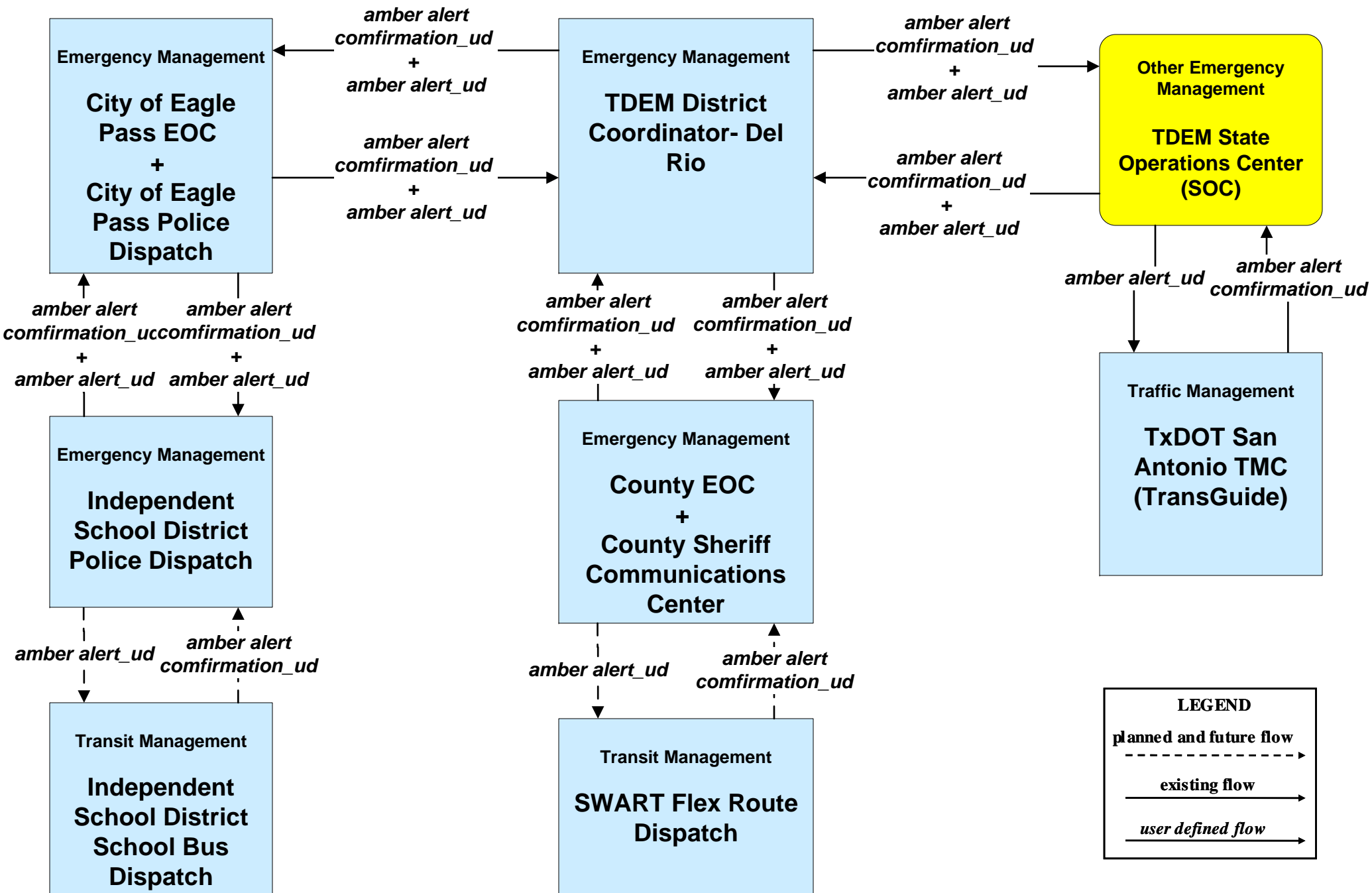
LEGEND

- planned and future flow* (dashed line with arrow)
- existing flow* (solid line with arrow)
- user defined flow* (solid line with arrow)

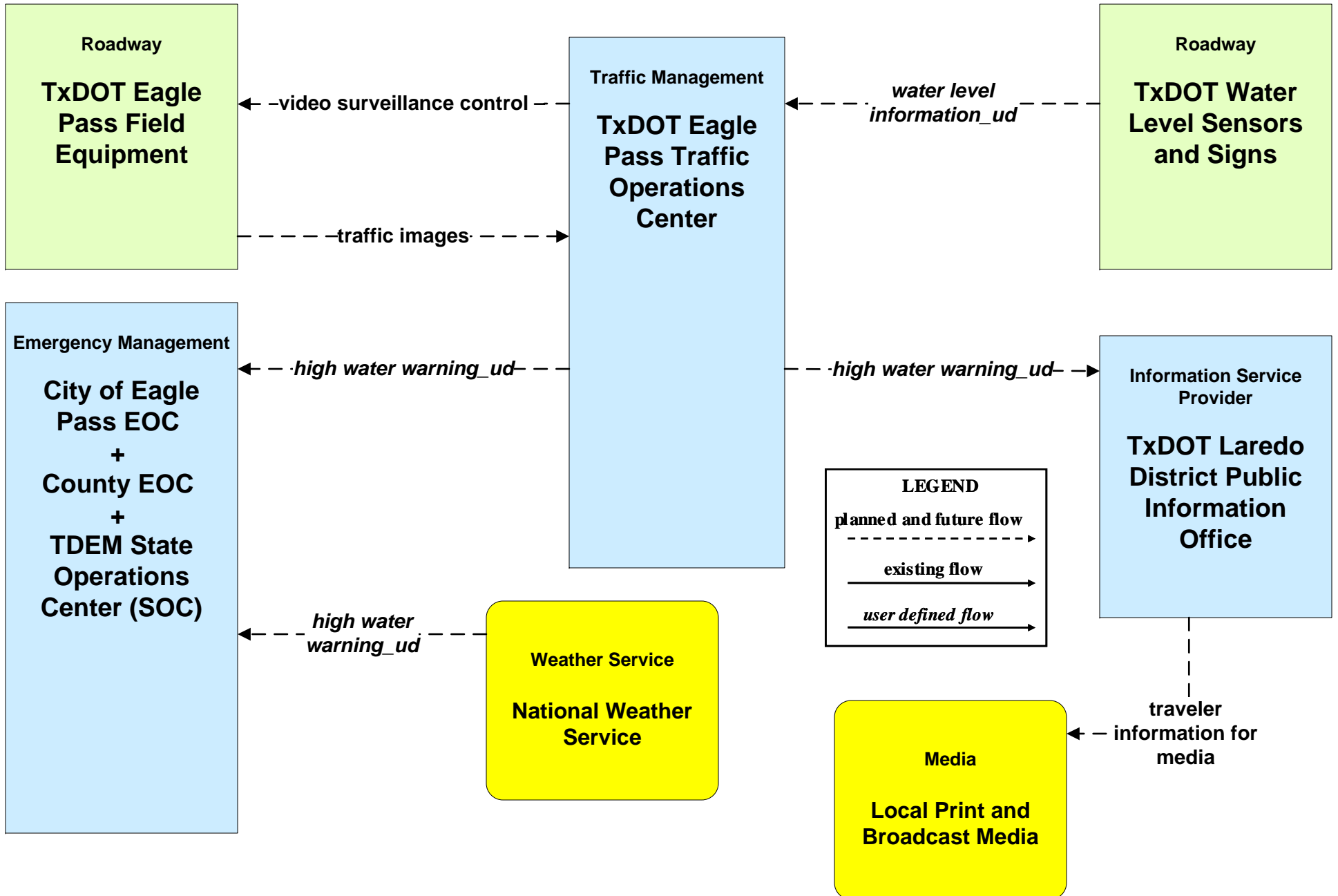
**EM06 - Wide-Area Alert
TDEM SOC**



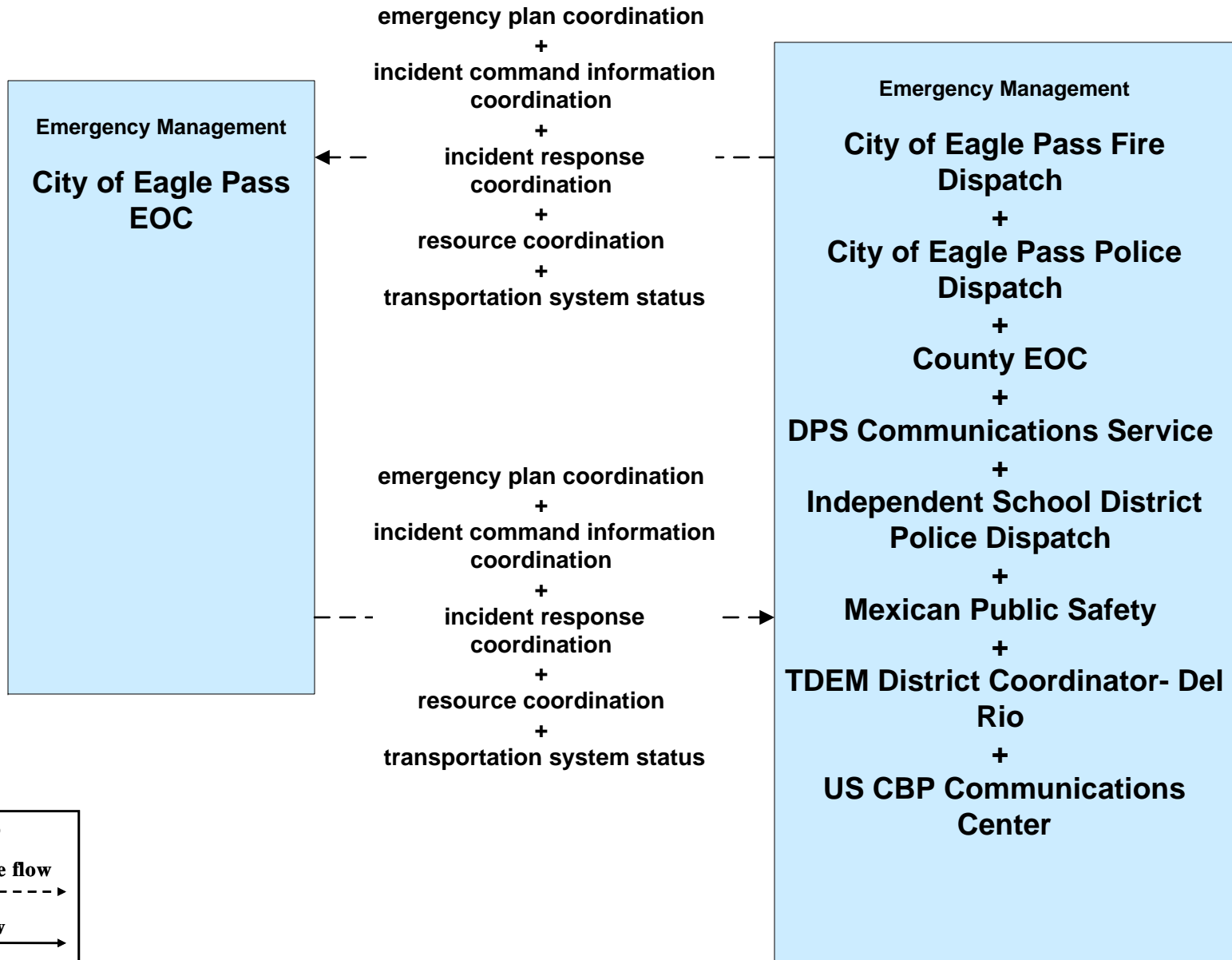
**EM06 - Wide-Area Alert
Amber Alert (TDEM)**



**EM07 - Early Warning System
TxDOT Flood Monitoring (1 of 2)**



**EM08 - Disaster Response and Recovery
City of Eagle Pass EOC (2 of 2)**



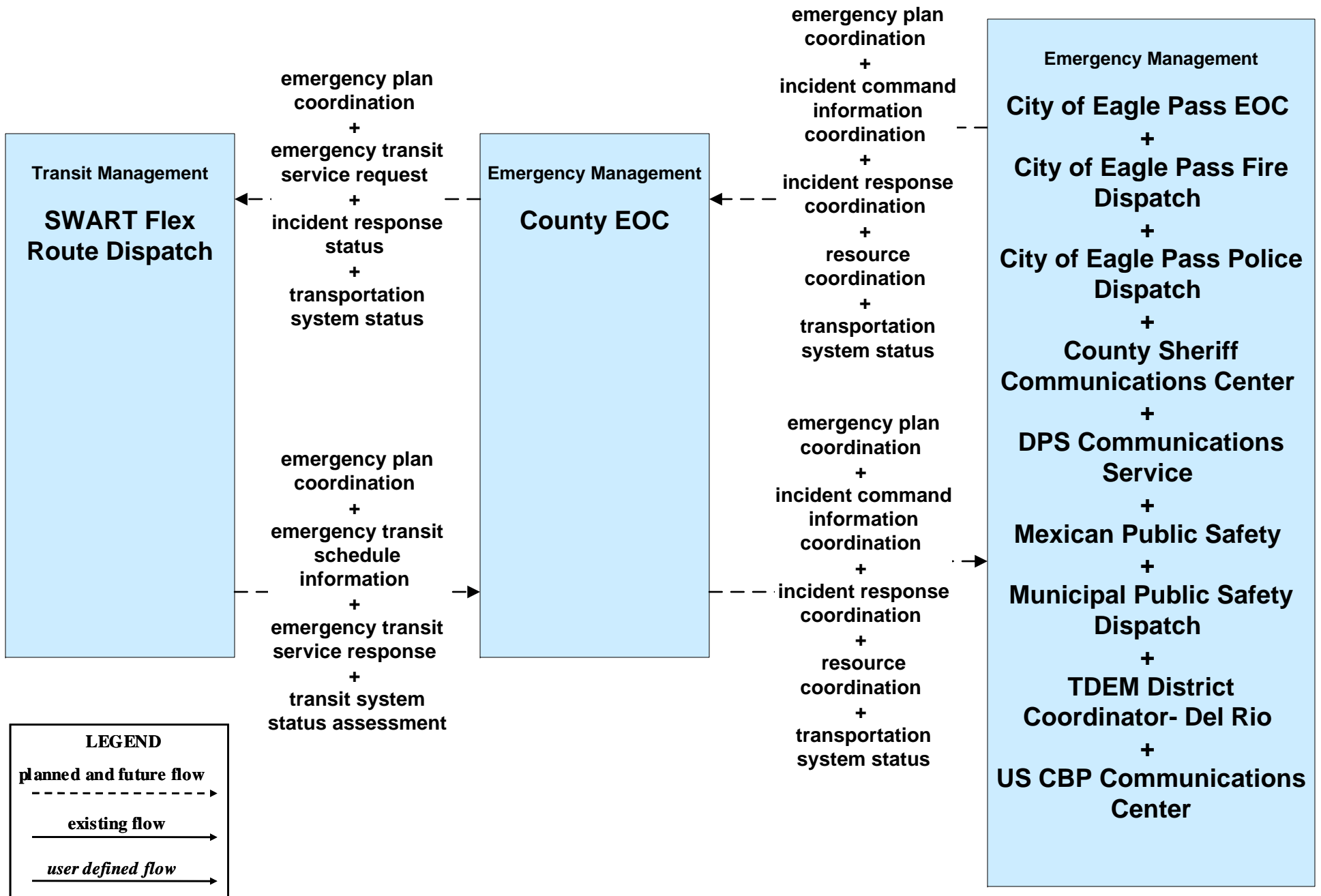
LEGEND

planned and future flow
----->

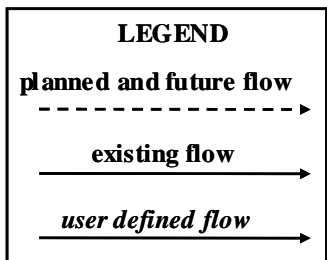
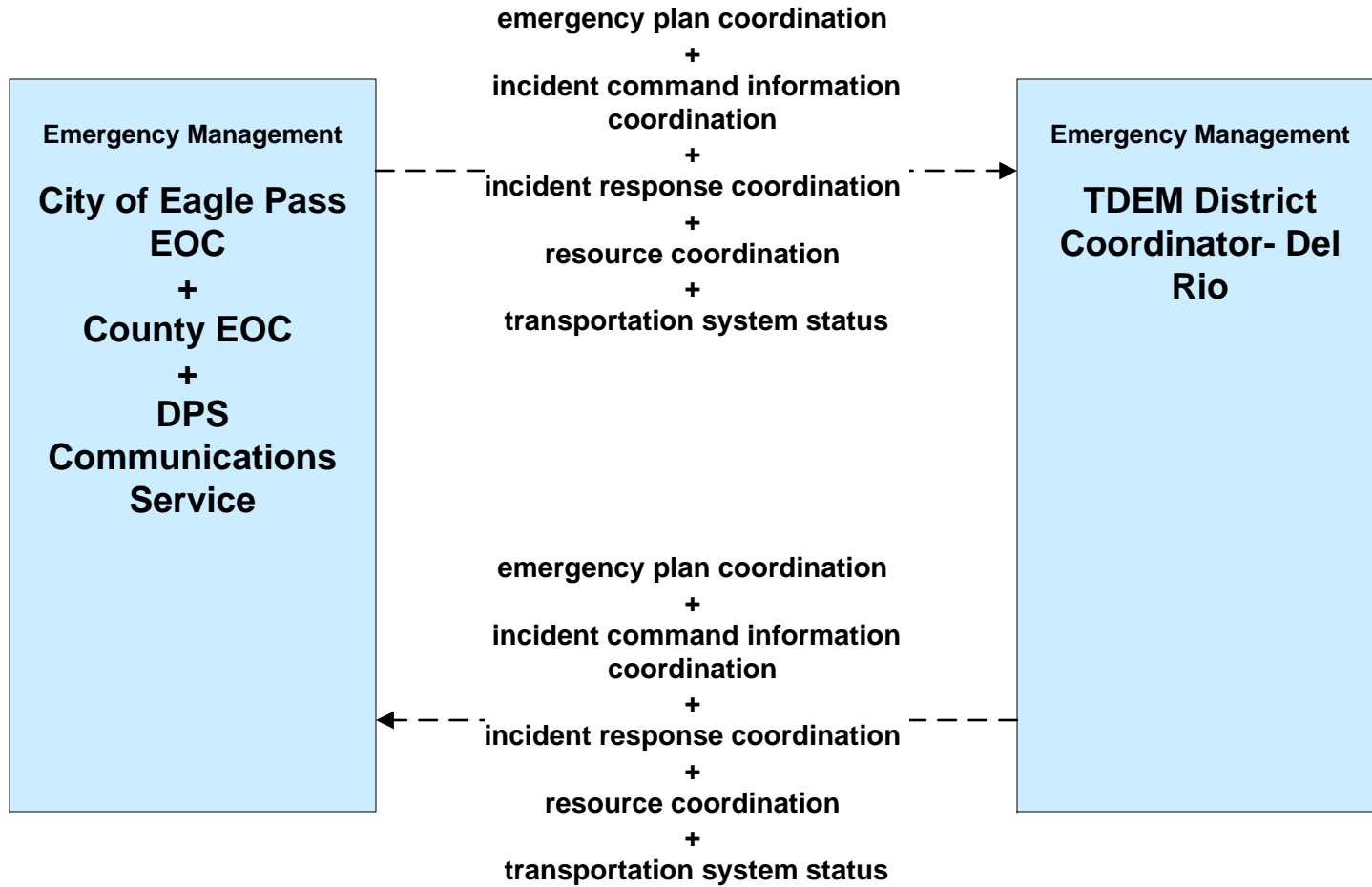
existing flow
—————>

user defined flow
—————>

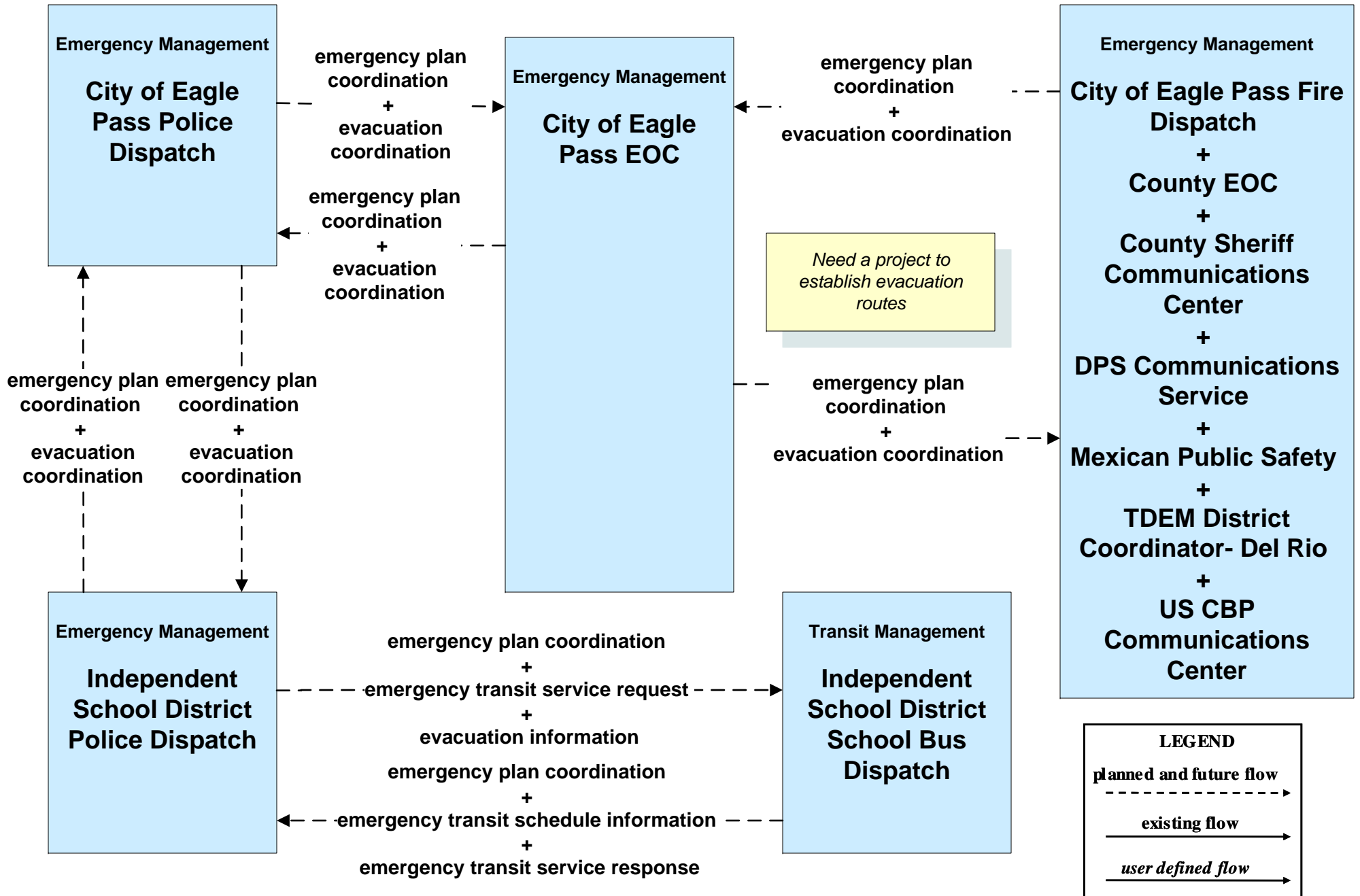
**EM08 - Disaster Response and Recovery
County EOC (2 of 2)**



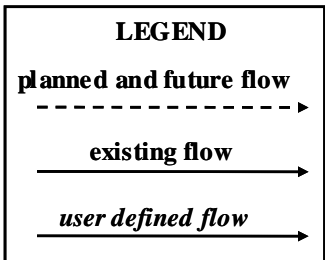
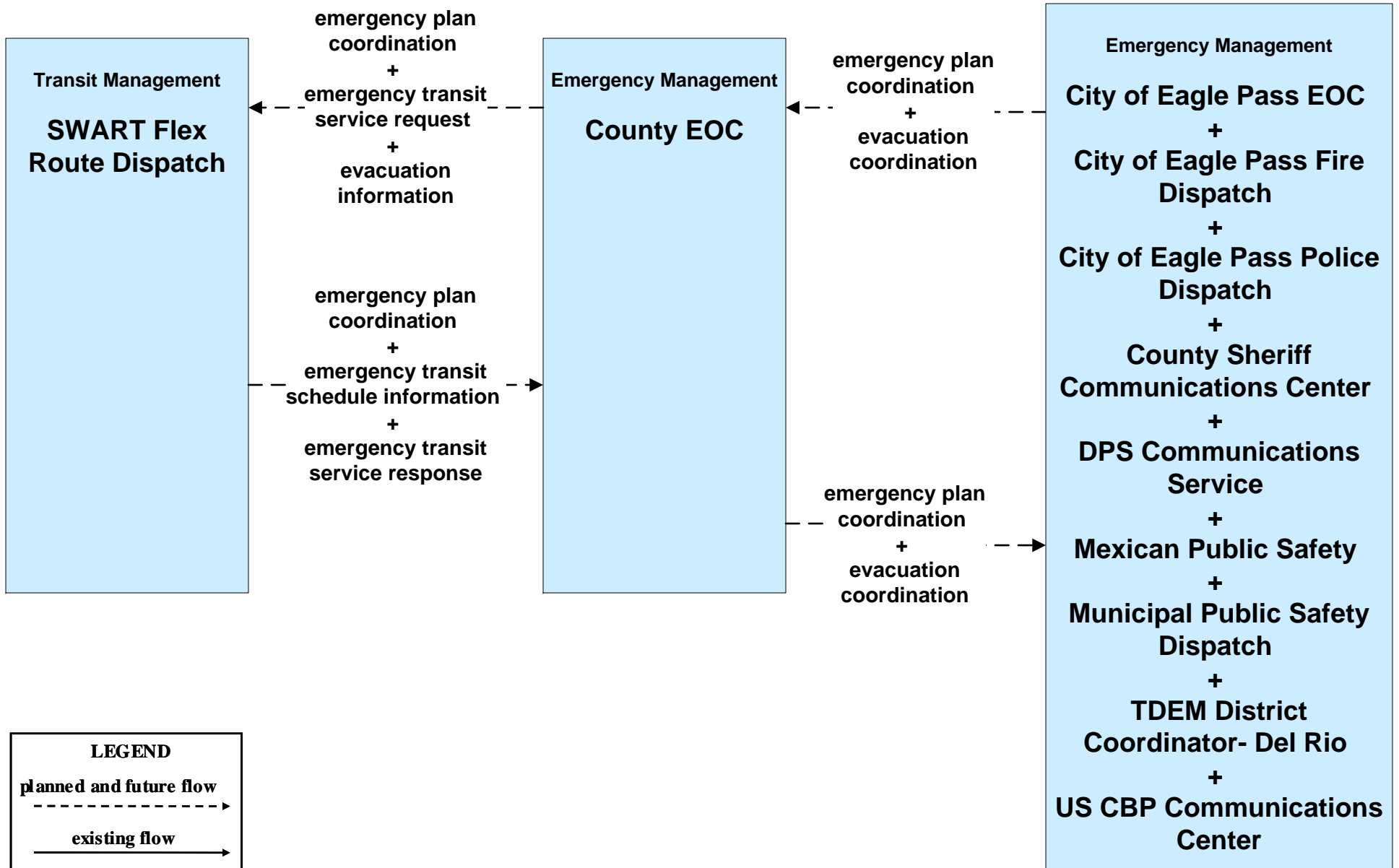
**EM08 - Disaster Response and Recovery
TDEM District Coordinator - Del Rio**



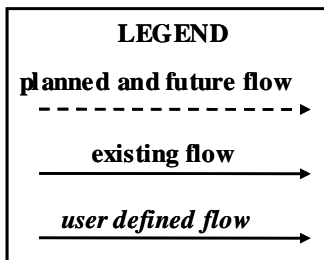
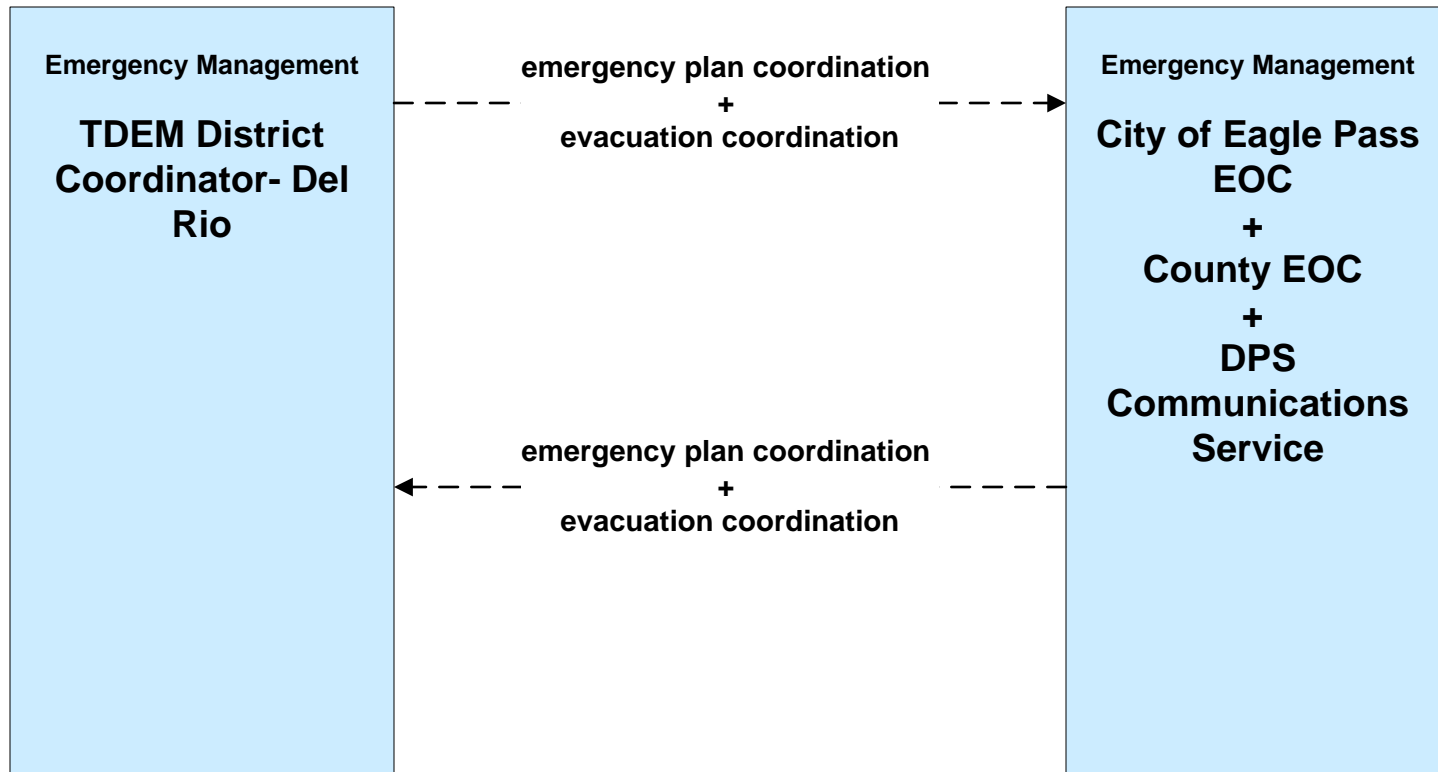
**EM09 - Evacuation and Reentry Management
City of Eagle Pass EOC (1 of 2)**



**EM09 - Evacuation and Reentry Management
County EOC (1 of 2)**



**EM09 - Evacuation and Reentry Management
TDEM District Coordinator - Del Rio**



**EM10 - Disaster Traveler Information
TxDOT**

