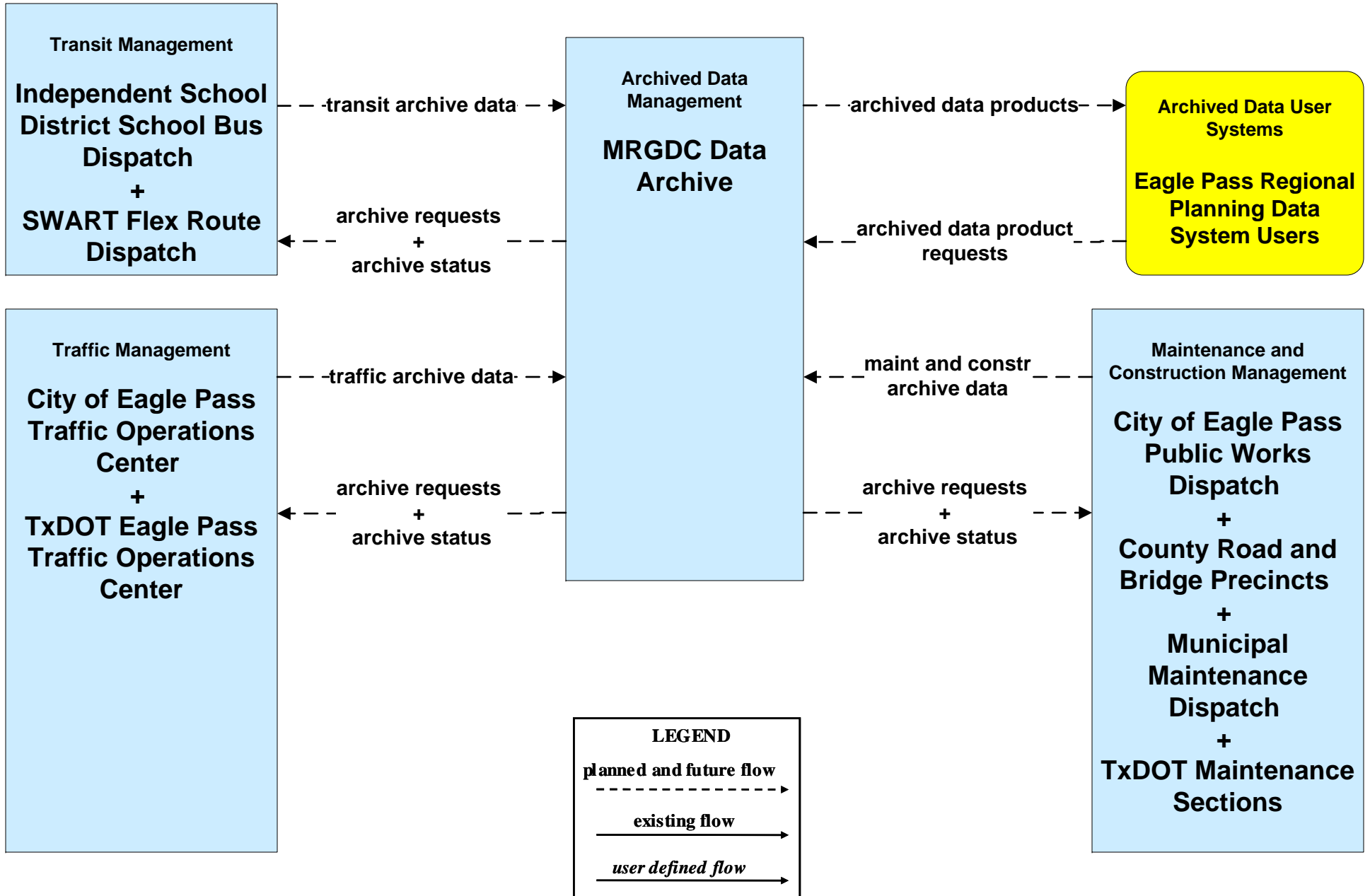
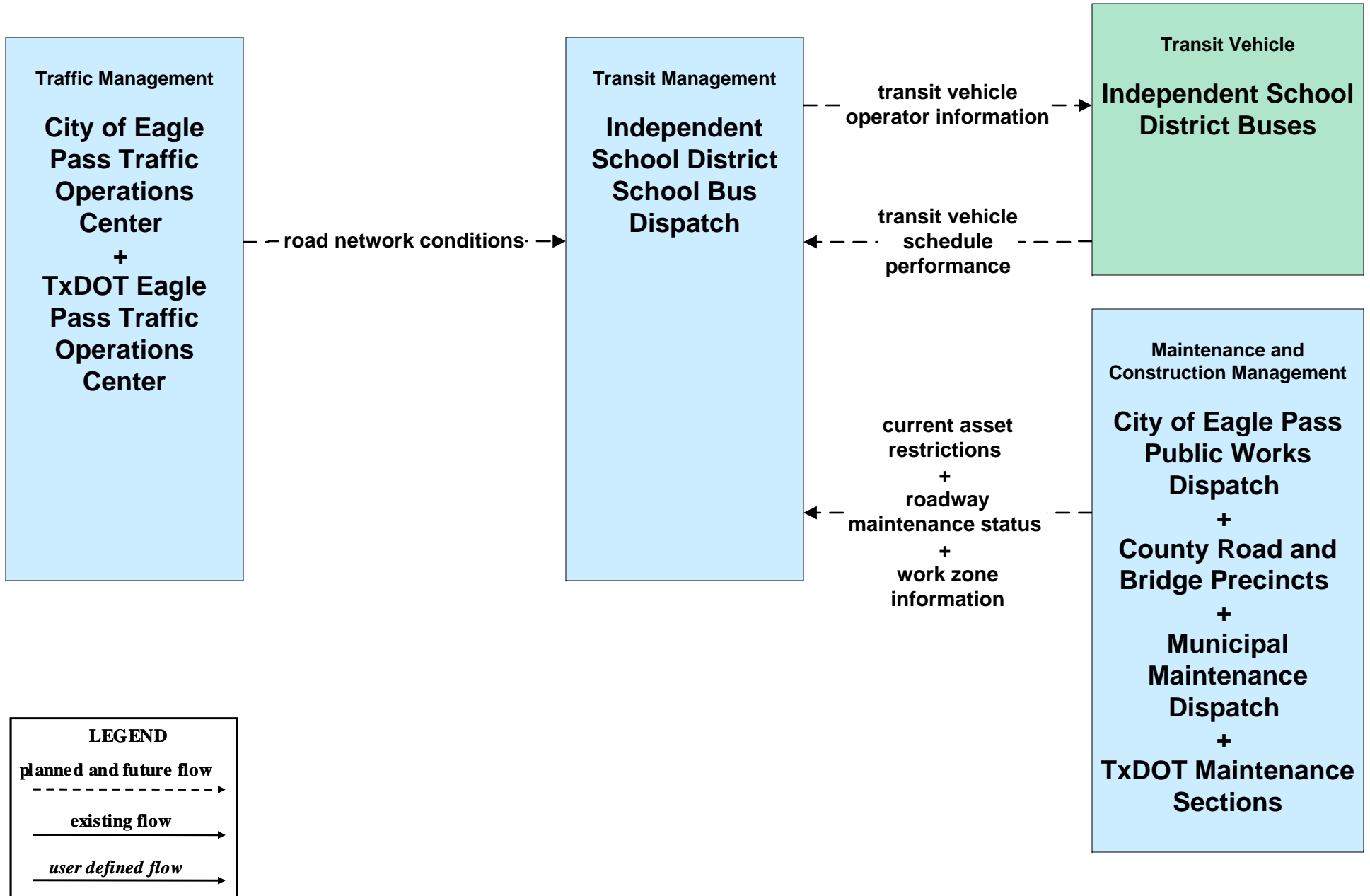


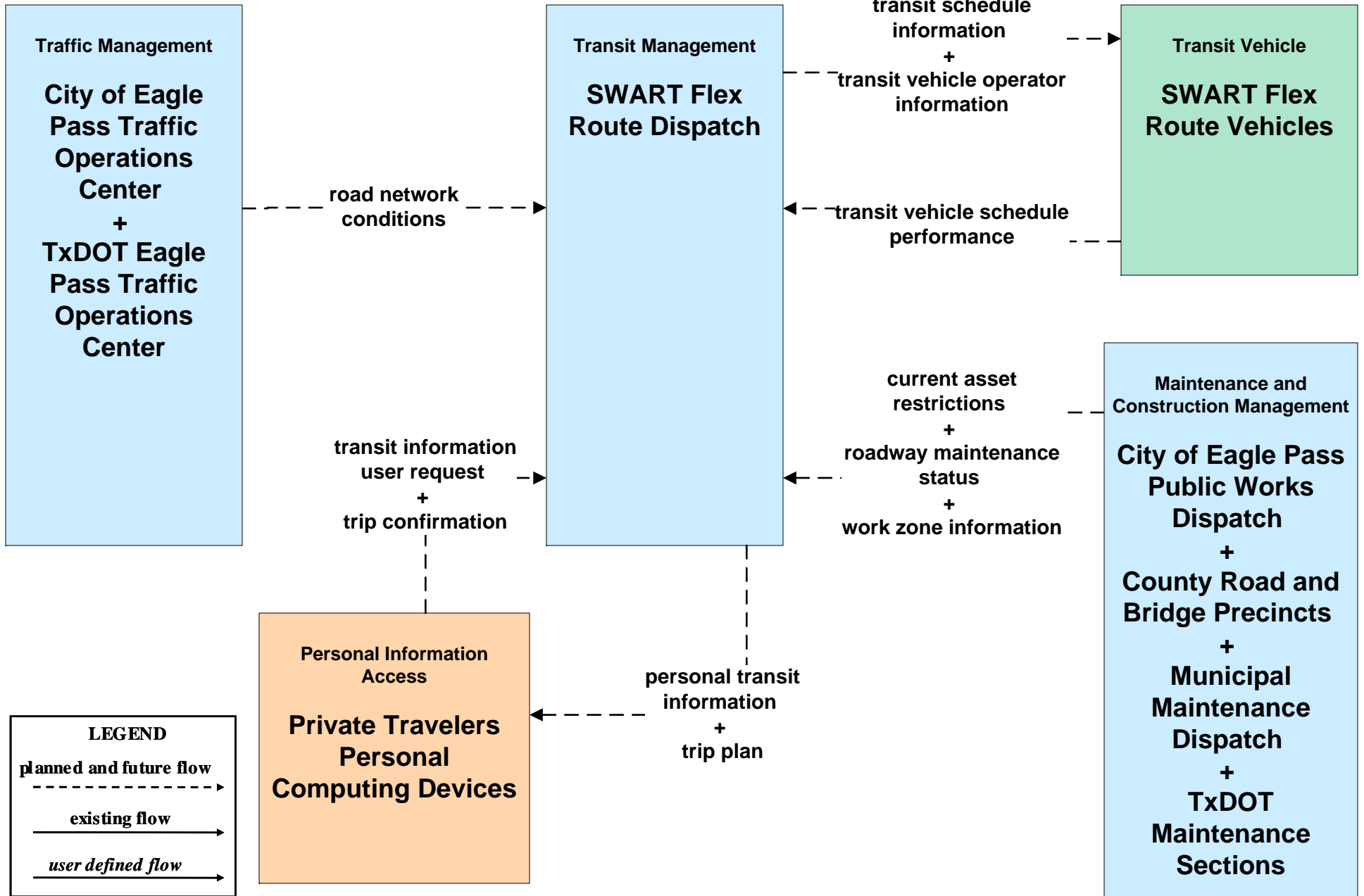
**AD2 - ITS Data Warehouse  
MRGDC Data Archive**



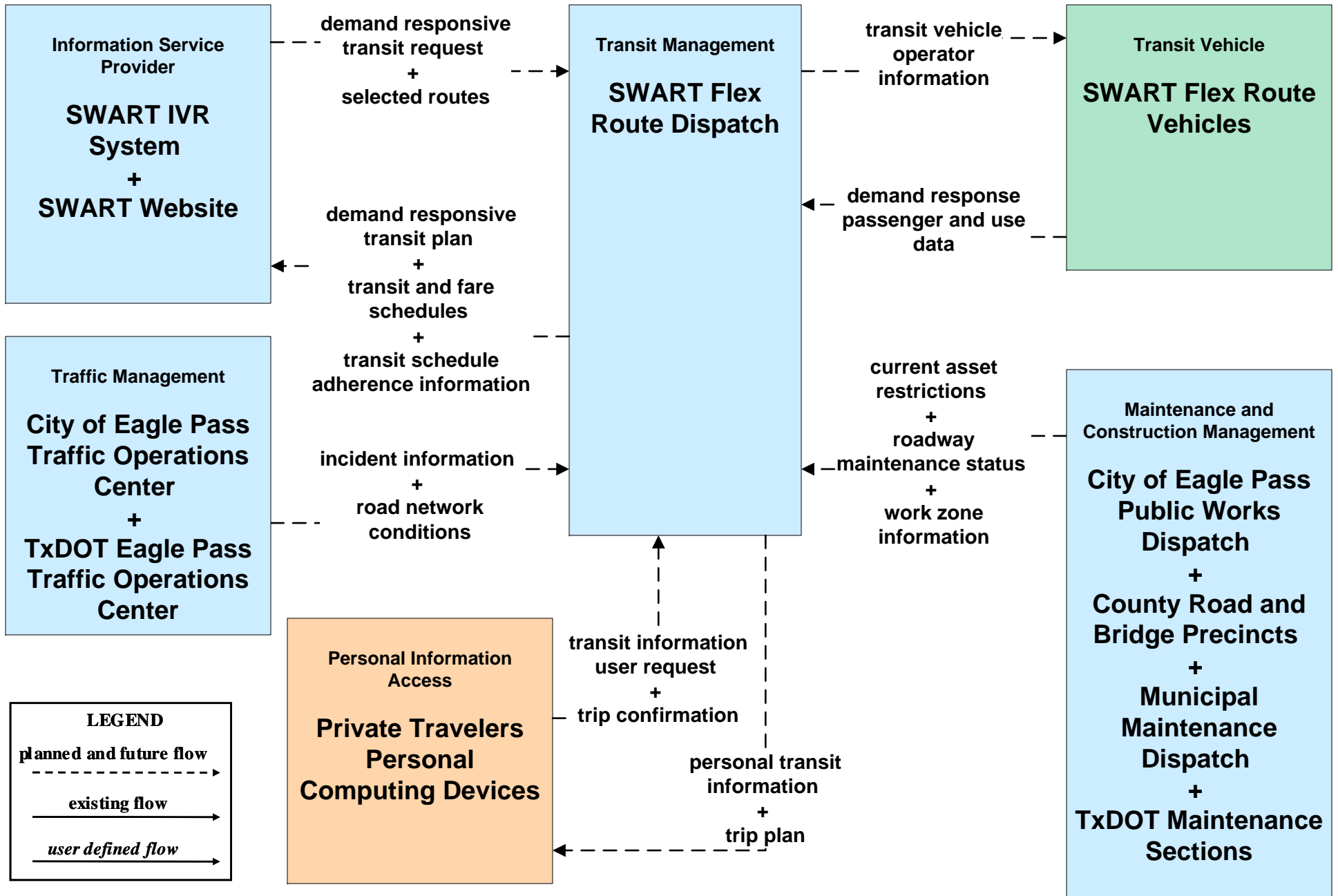
**APTS02 - Transit Fixed-Route Operations  
Independent School Districts**



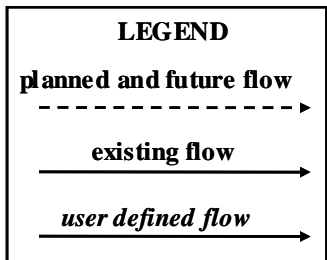
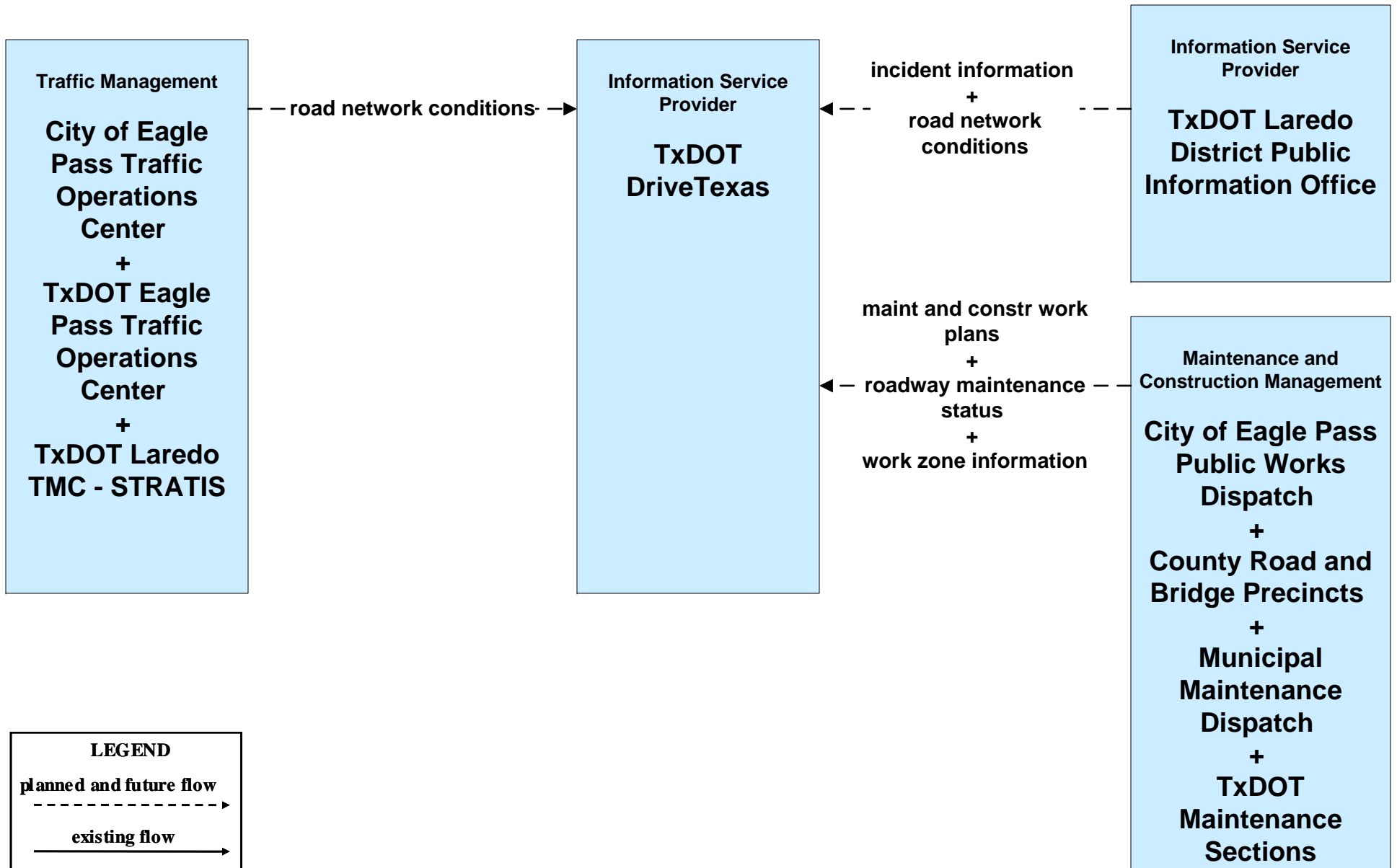
**APTS02 - Transit Fixed-Route Operations**  
**Southwest Area Regional Transit District - Flex Routing**



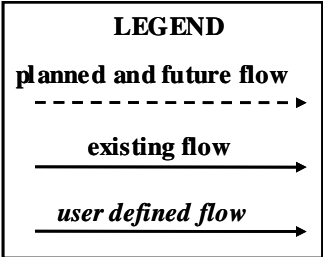
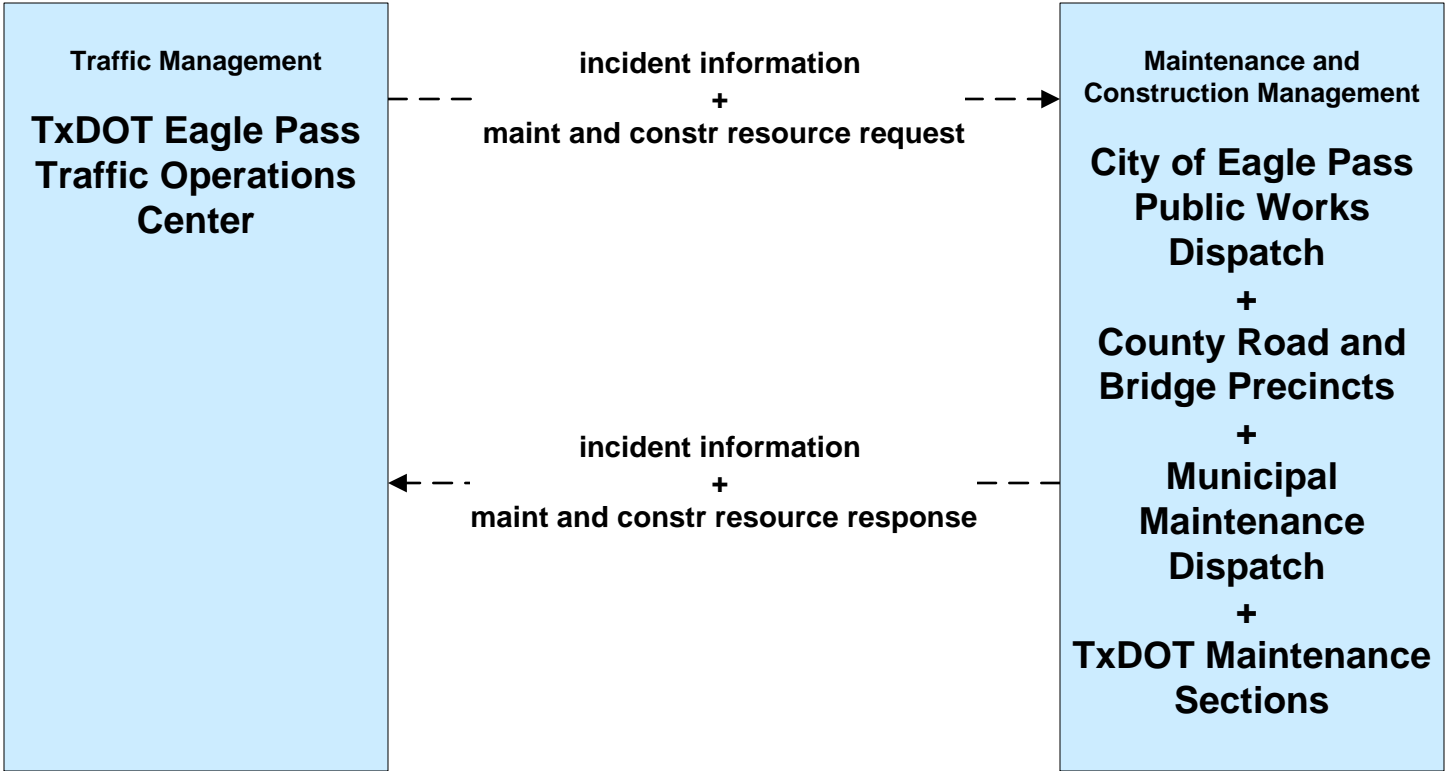
# APTS03 - Demand Response Transit Operations Southwest Area Regional Transit District - Flex Routing



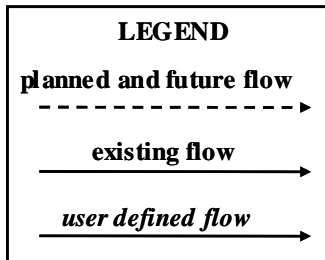
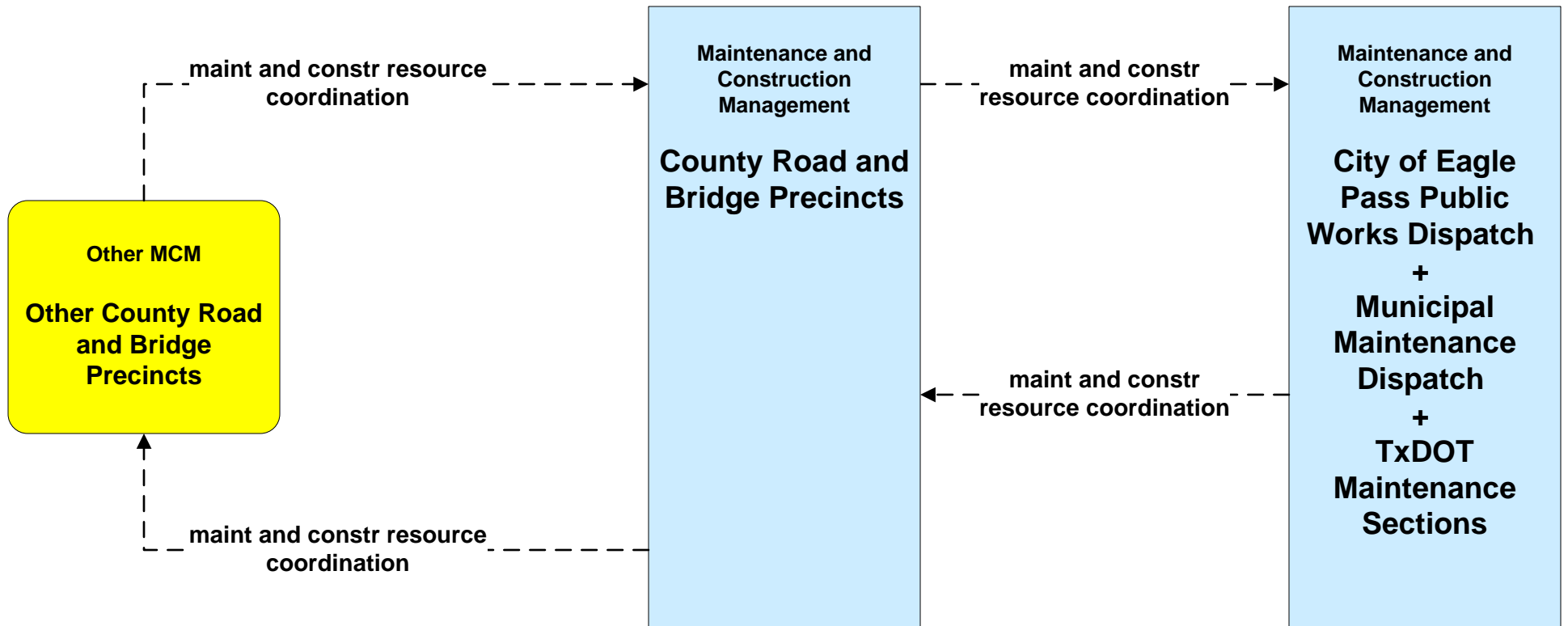
**ATIS01 - Broadcast Traveler Information  
TxDOT DriveTexas (Inputs)**



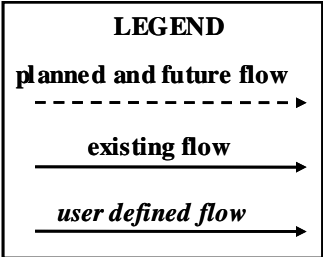
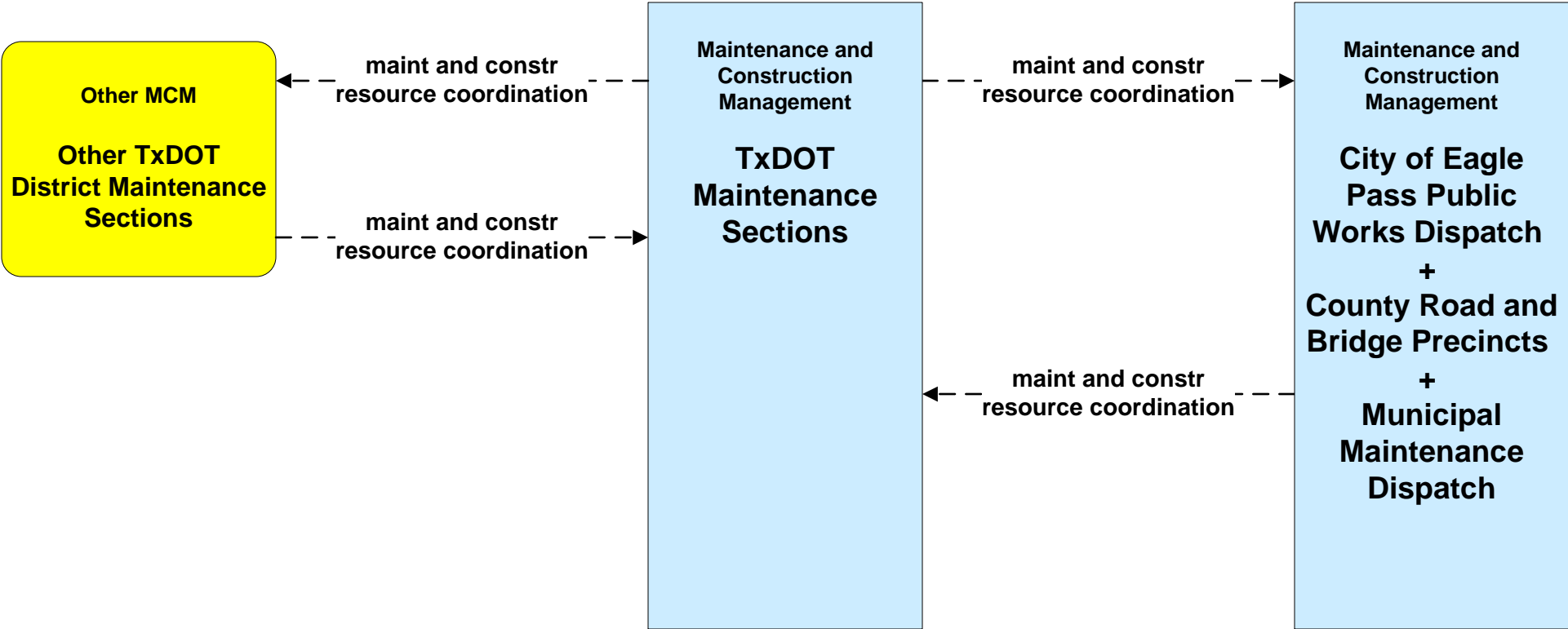
**ATMS08 - Traffic Incident Management System**  
**TM to MCM - TM to TxDOT Eagle Pass**



**ATMS08 – Traffic Incident Management System  
MCM to MCM - County Road and Bridge**

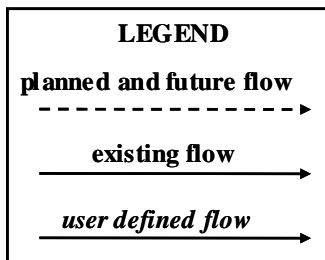
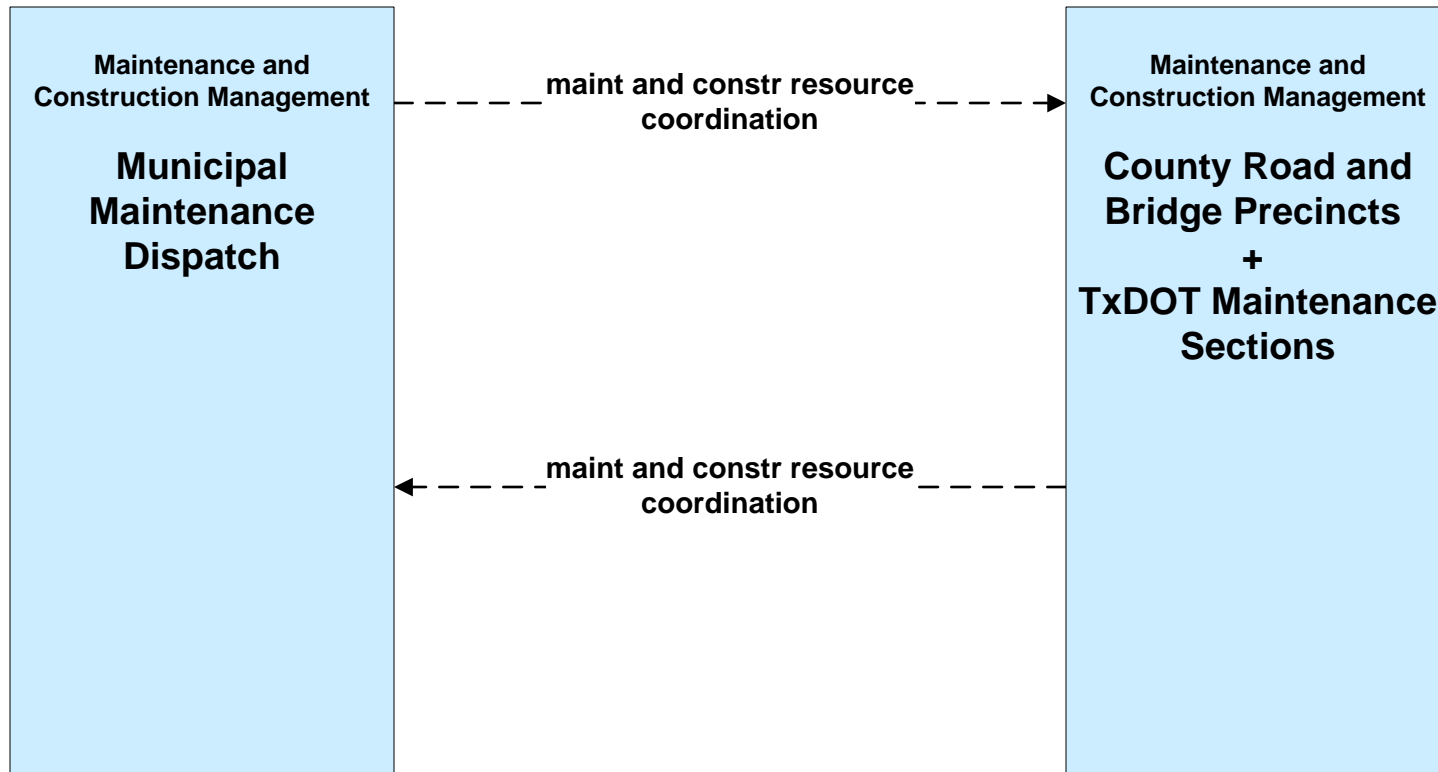


**ATMS08 - Traffic Incident Management System  
MCM to MCM - TxDOT**



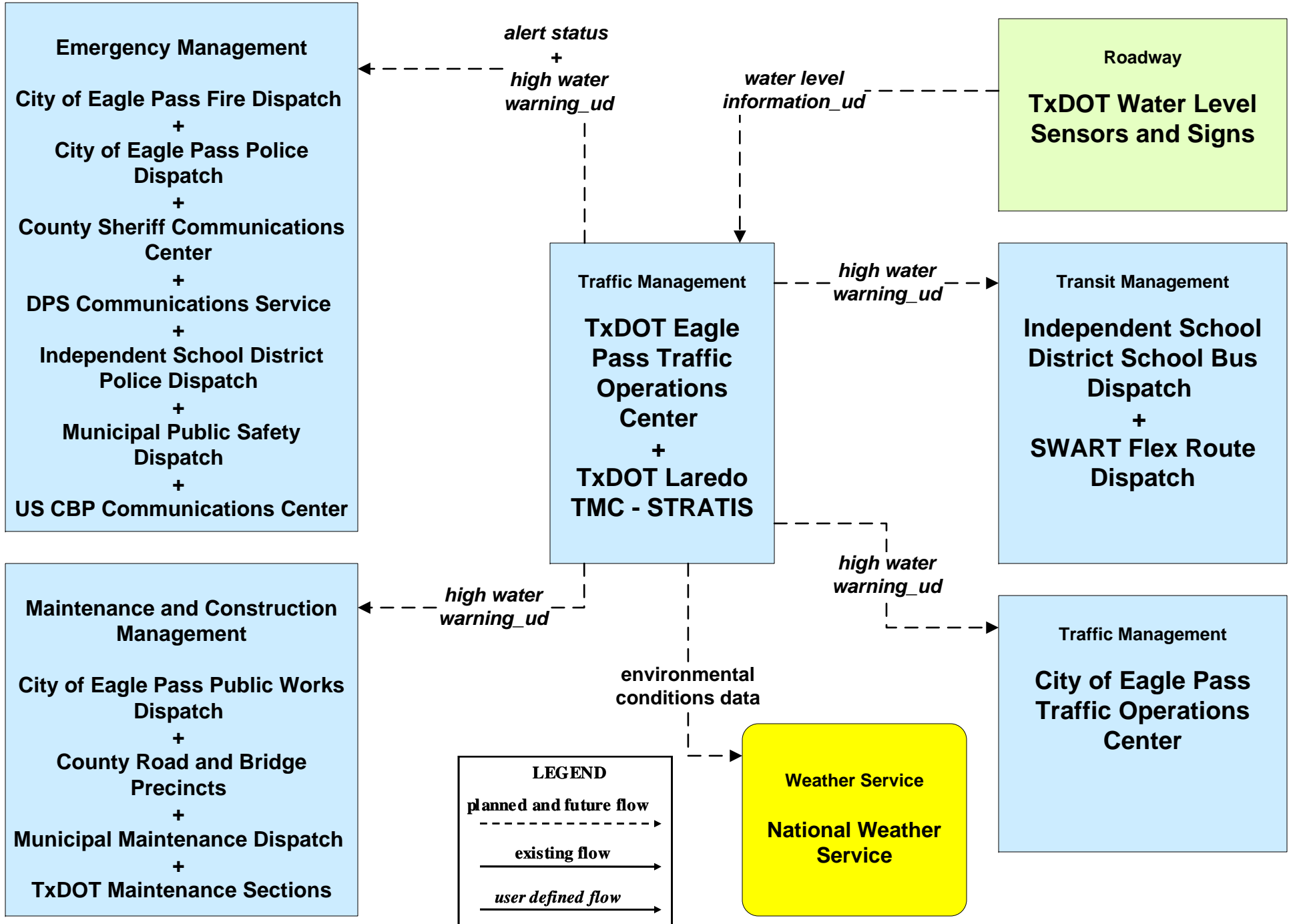


**ATMS08 – Traffic Incident Management System  
MCM to MCM – Municipal Maintenance**

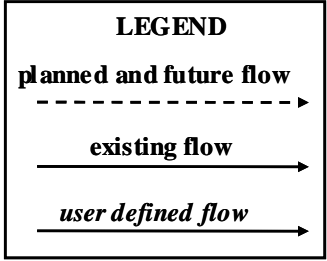
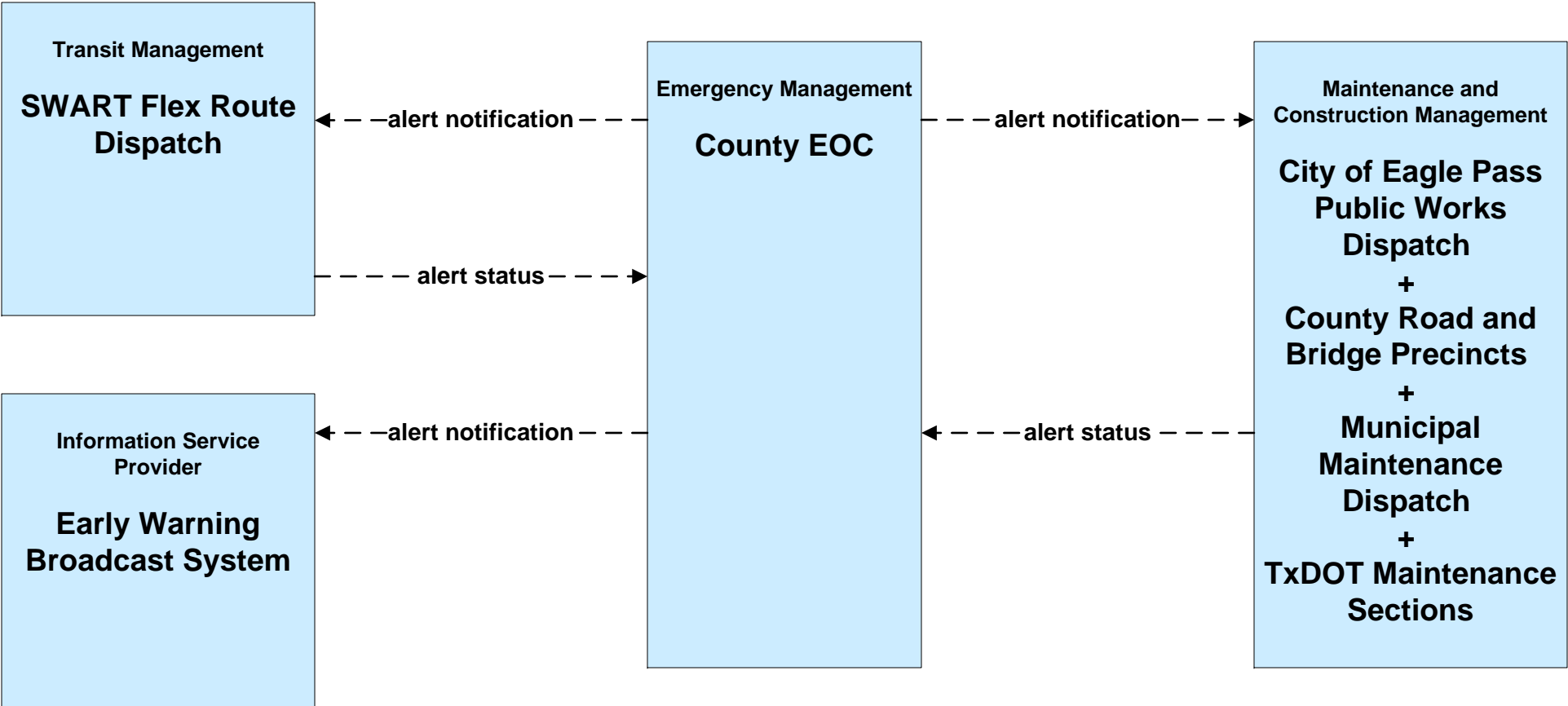


# ATMS08 – Traffic Incident Management System

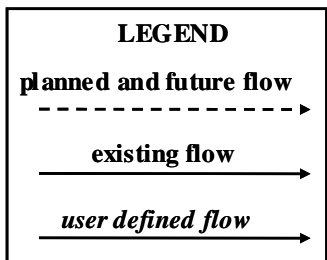
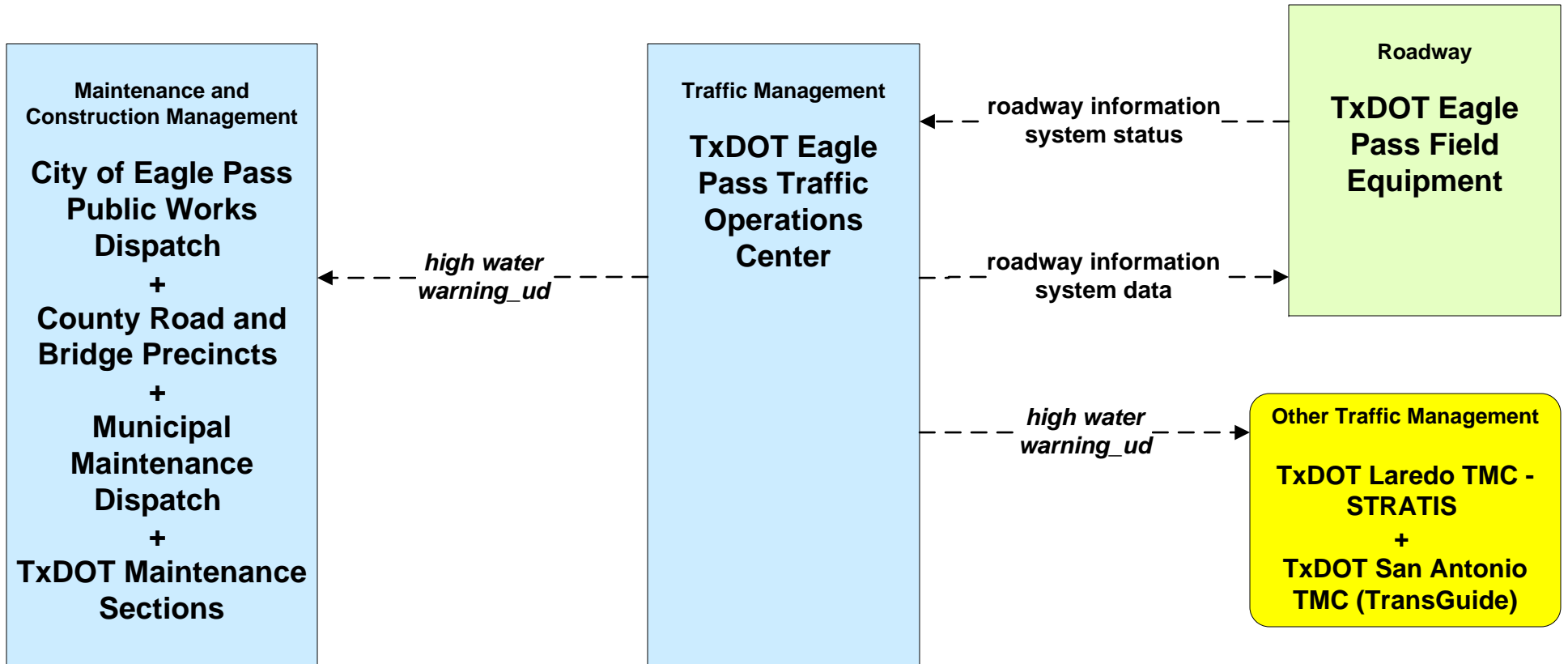
## Flood Warning - TxDOT Eagle Pass



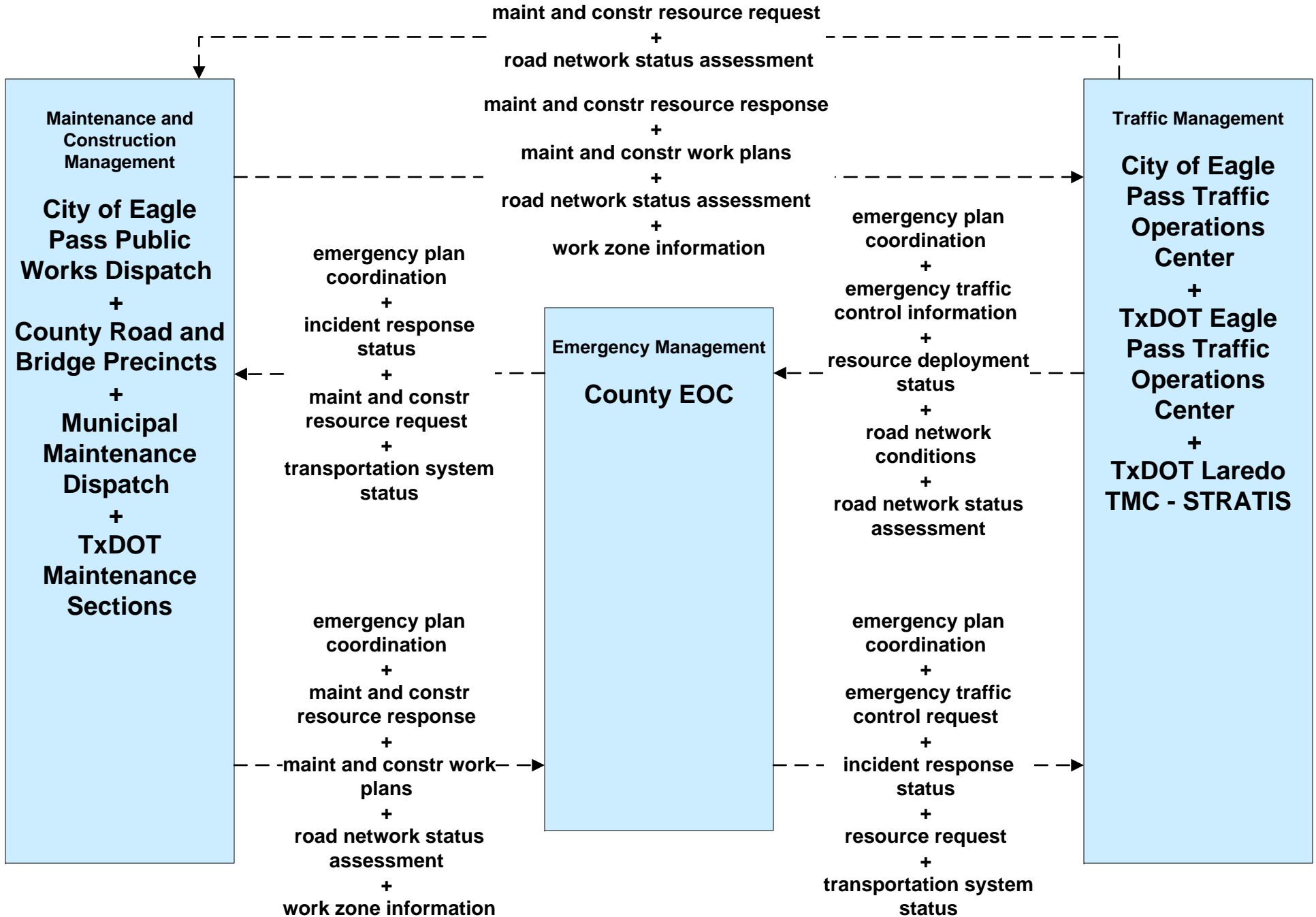
**EM06 - Wide-Area Alert  
County EOC (2 of 2)**



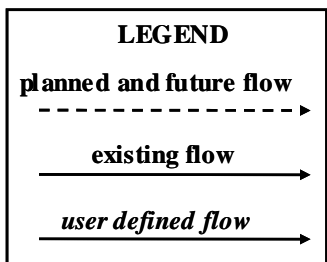
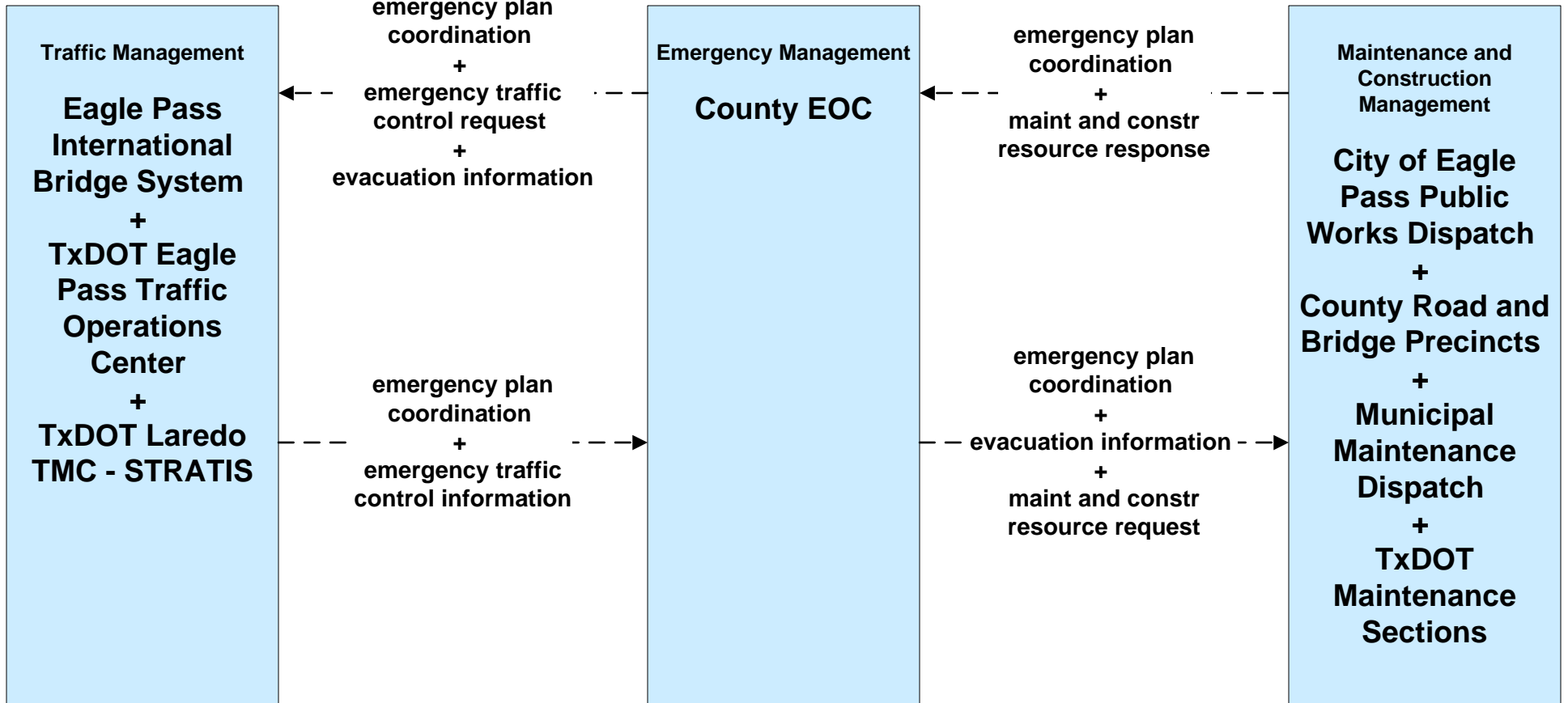
**EM07 - Early Warning System  
TxDOT Flood Monitoring (2 of 2)**



**EM08 - Disaster Response and Recovery  
County EOC (1 of 2)**



**EM09 - Evacuation and Reentry Management  
County EOC (2 of 2)**



**MC10 - Maintenance and Construction Activity Coordination  
TxDOT Maintenance Sections (1 of 2)**

