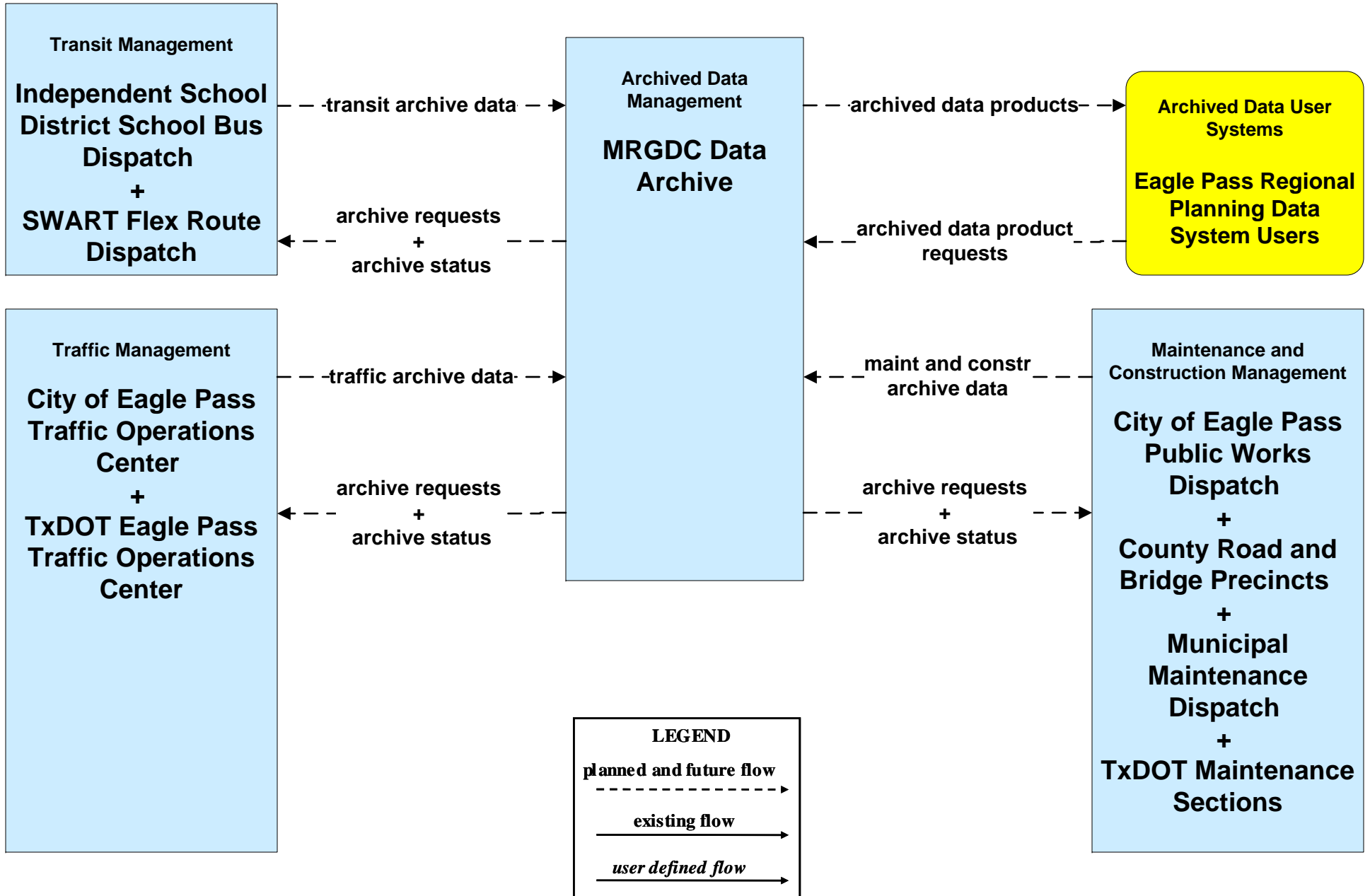
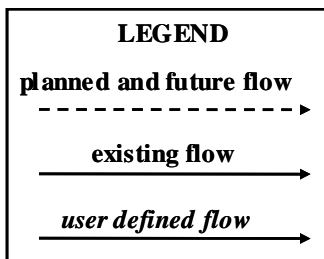
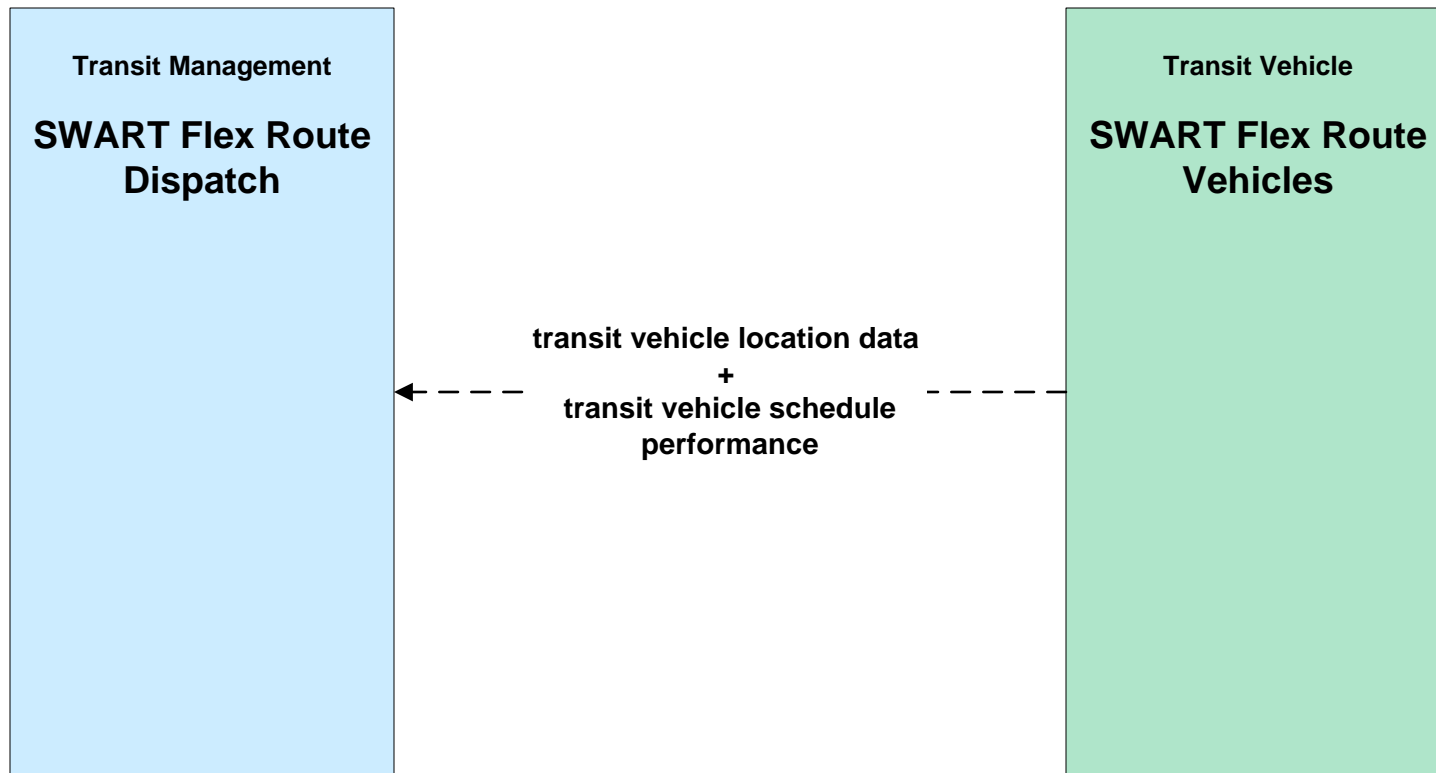


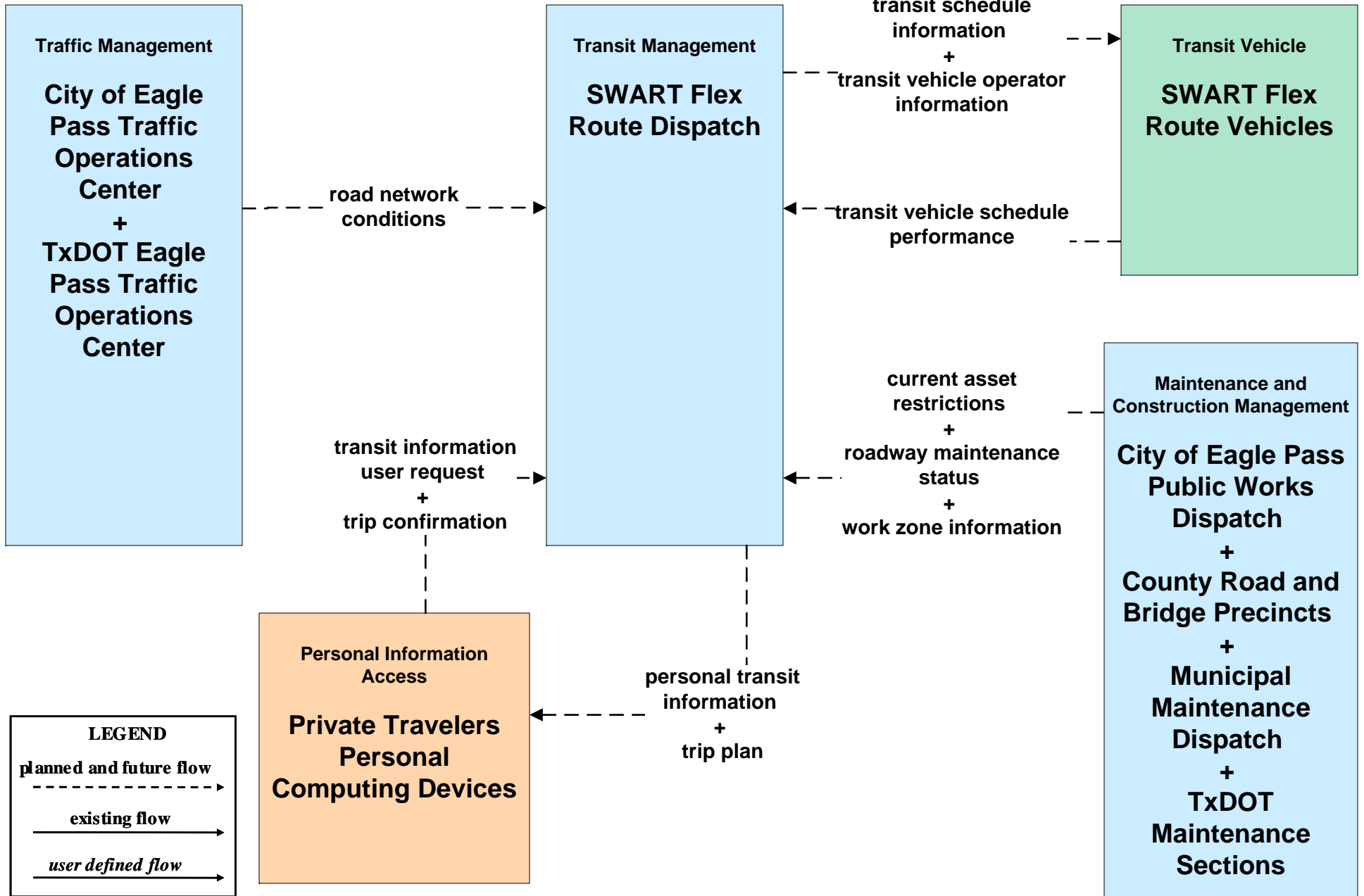
**AD2 - ITS Data Warehouse  
MRGDC Data Archive**



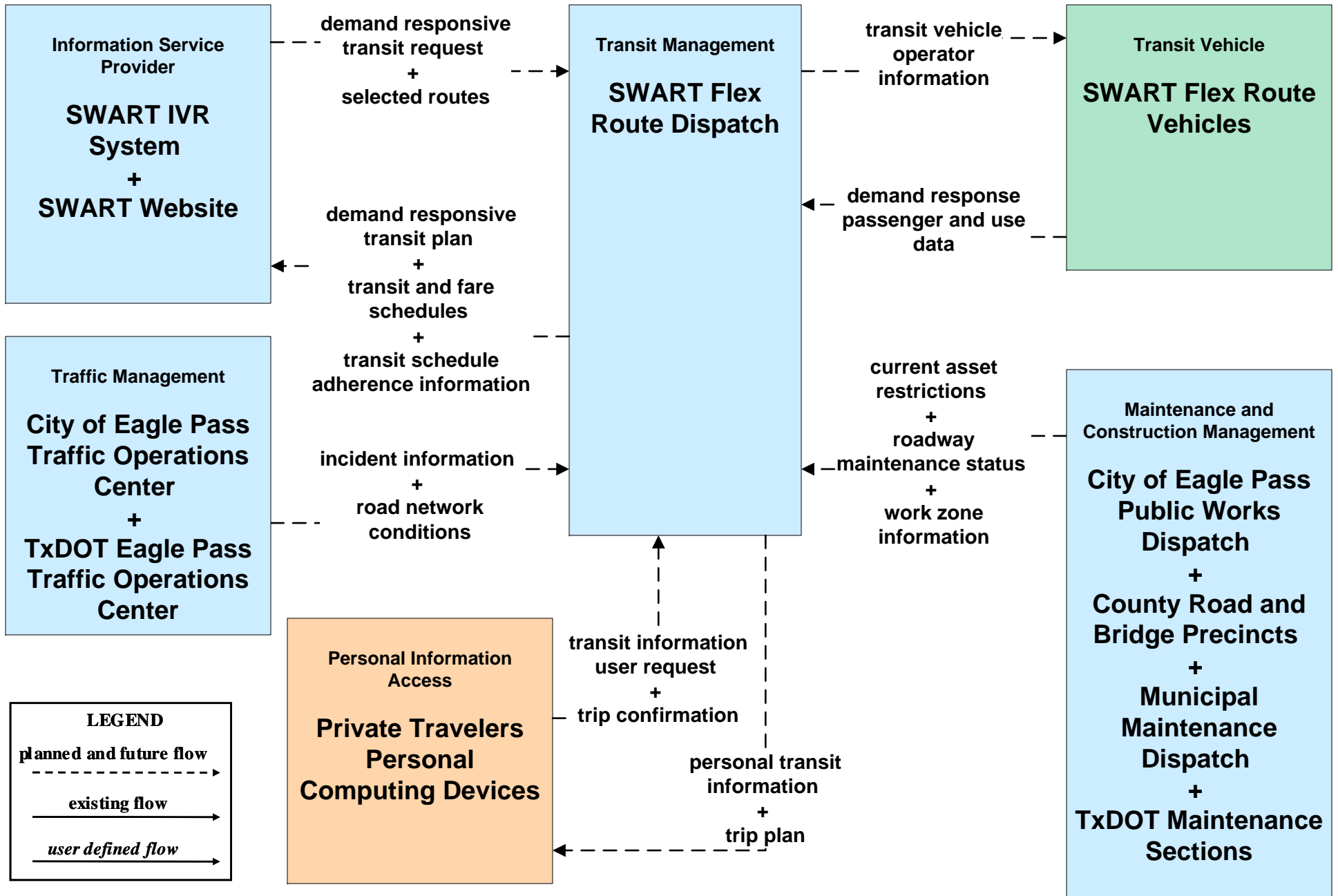
**APTS01 - Transit Vehicle Tracking  
Southwest Area Regional Transit District**



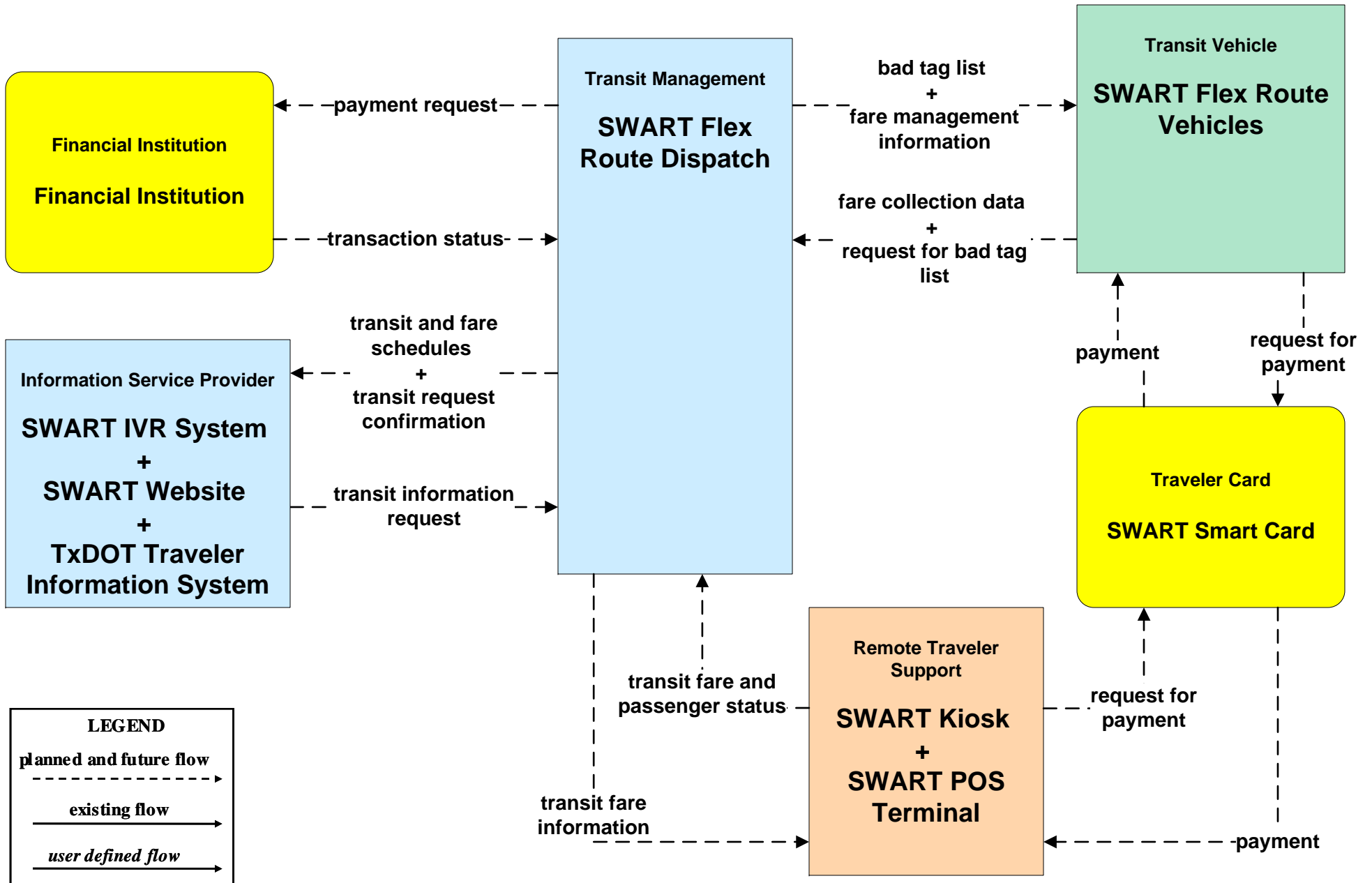
**APTS02 - Transit Fixed-Route Operations**  
**Southwest Area Regional Transit District - Flex Routing**



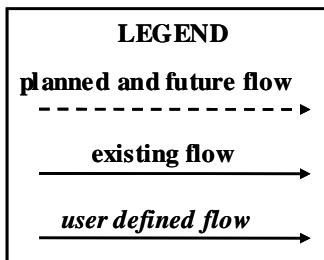
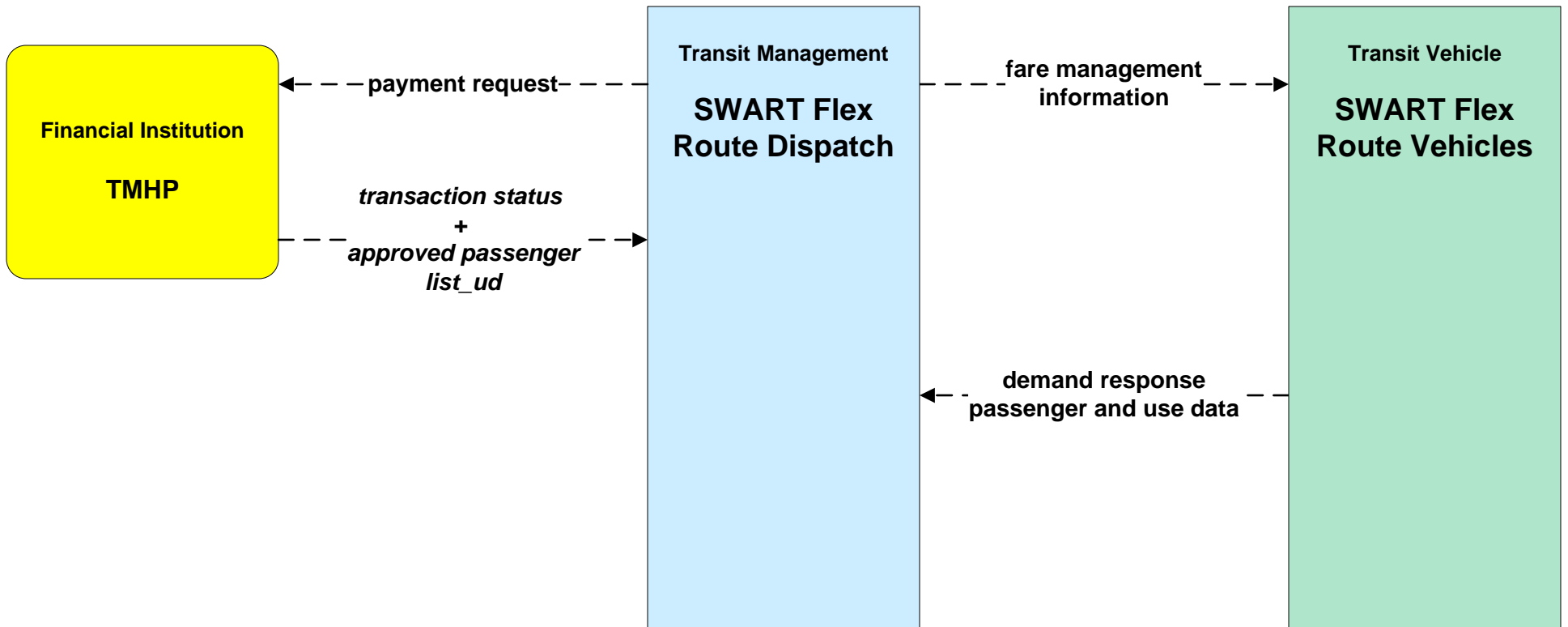
# APTS03 - Demand Response Transit Operations Southwest Area Regional Transit District - Flex Routing



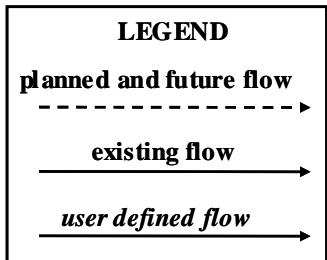
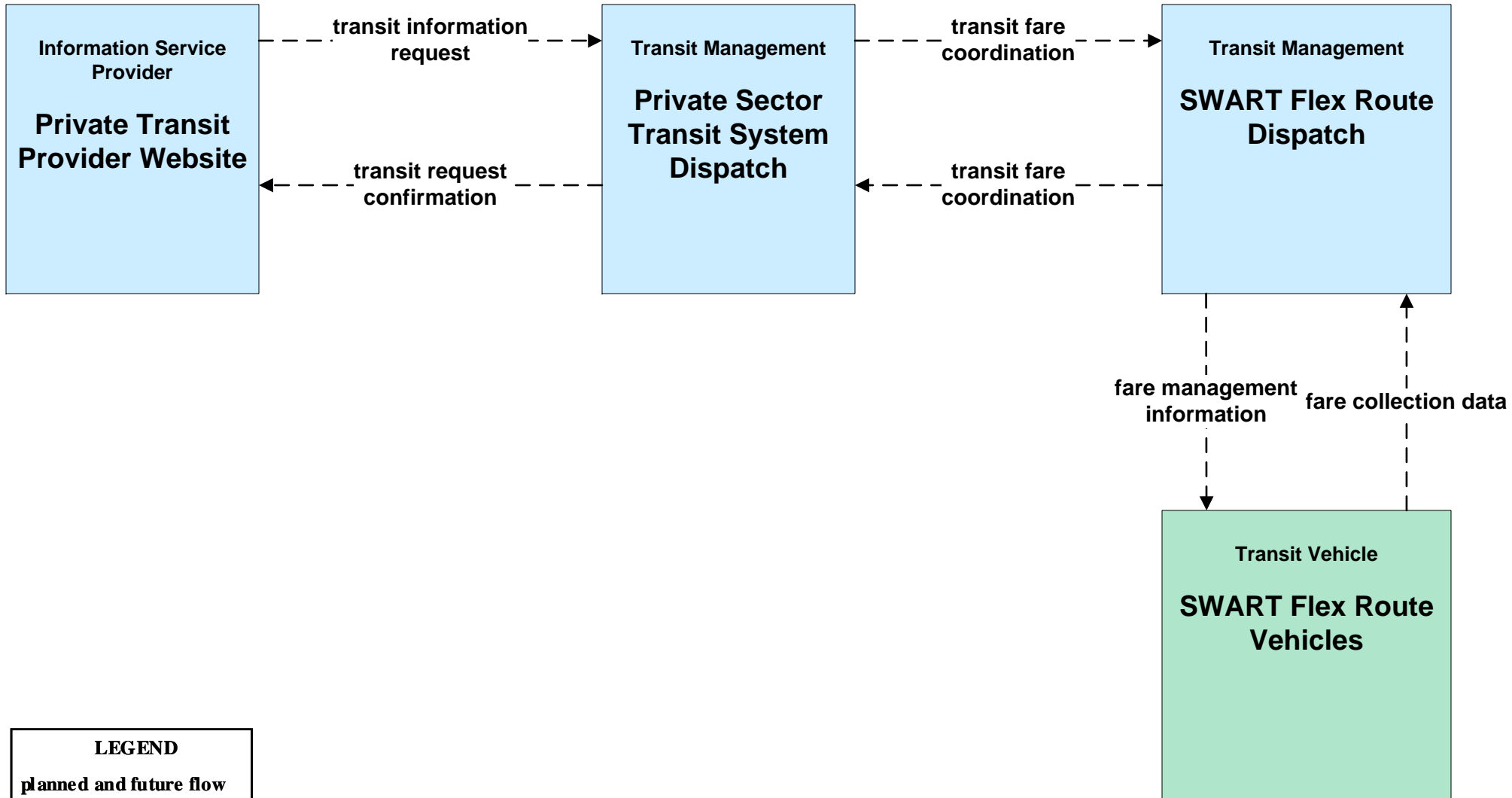
**APTS04 - Transit Fare Collection Management**  
**Southwest Area Regional Transit District - Non Medical**



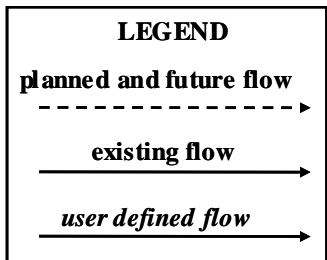
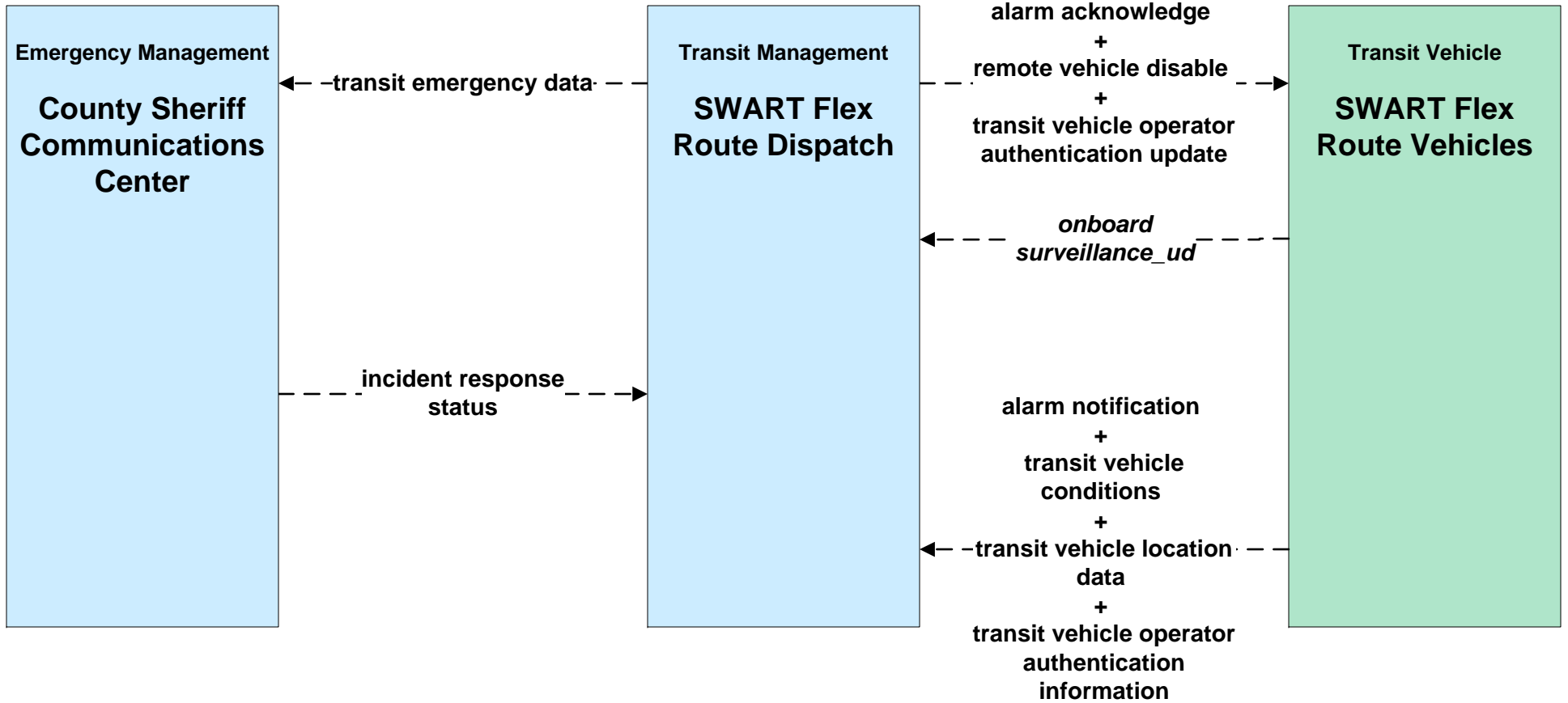
**APTS04 - Transit Fare Collection Management**  
**Southwest Area Regional Transit District - Medical Transportation Program**



**APTS04 - Transit Fare Collection Management**  
**Southwest Area Regional Transit District - Private Transit System Fare Coordination**

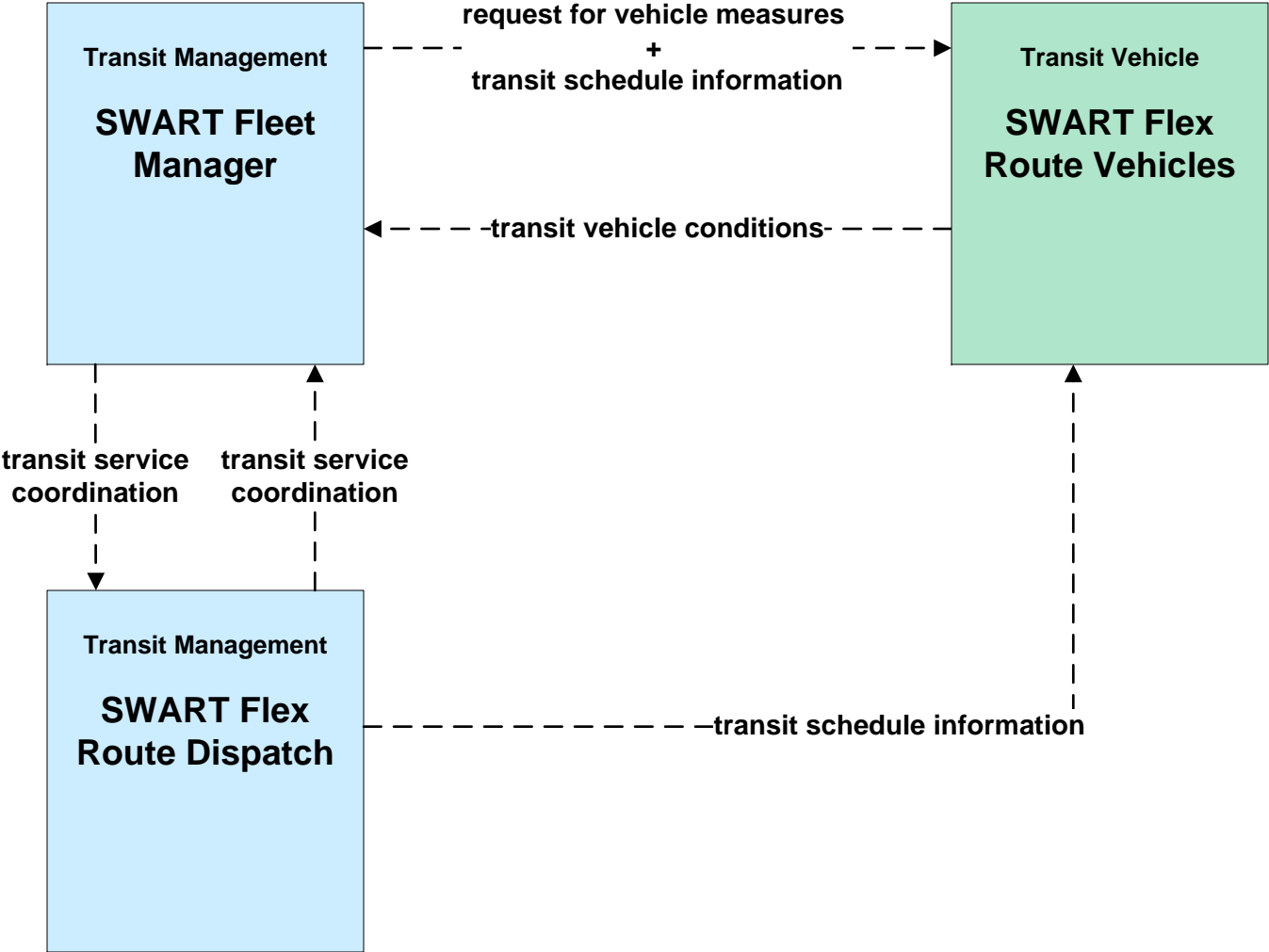


**APTS05 - Transit Security**  
**Southwest Area Regional Transit District**





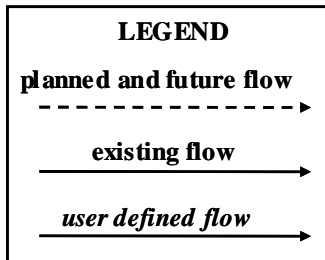
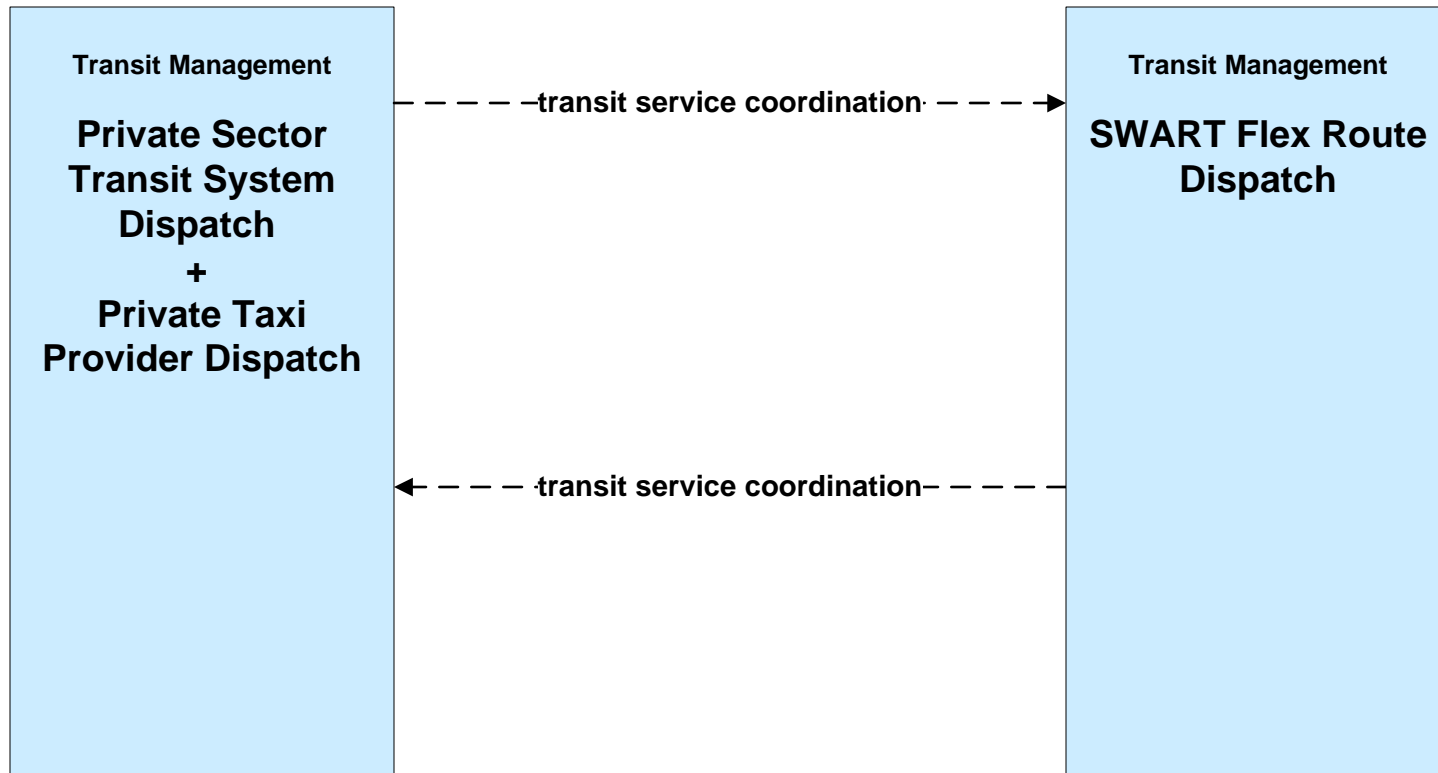
**APTS06 - Transit Vehicle Maintenance  
Southwest Area Regional Transit District**



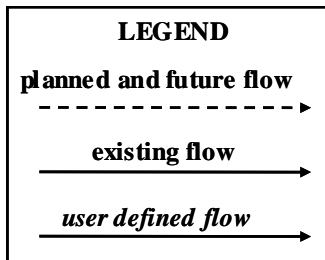
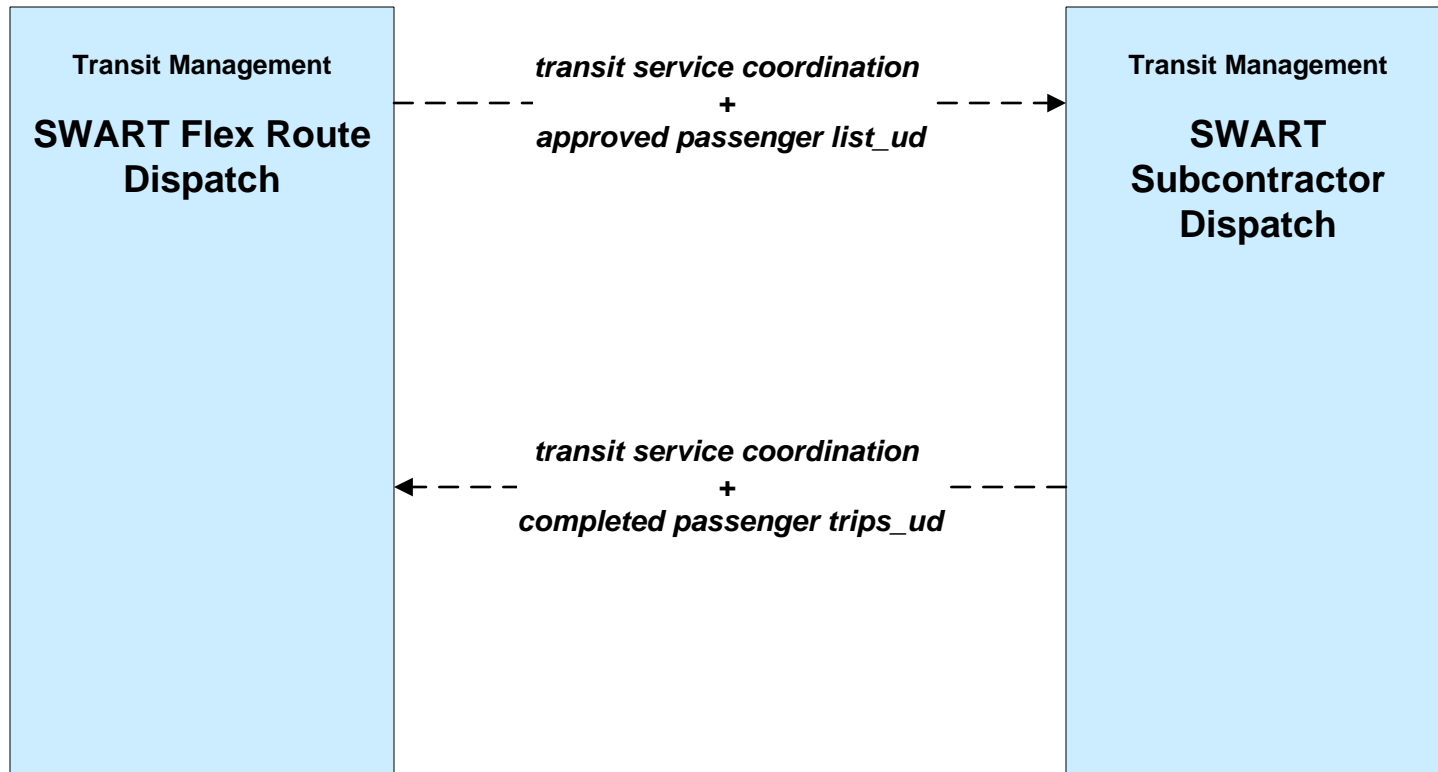
**LEGEND**

- planned and future flow (dashed arrow)
- existing flow (solid arrow)
- user defined flow (solid arrow)

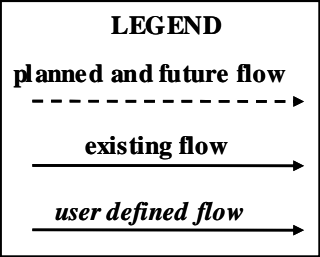
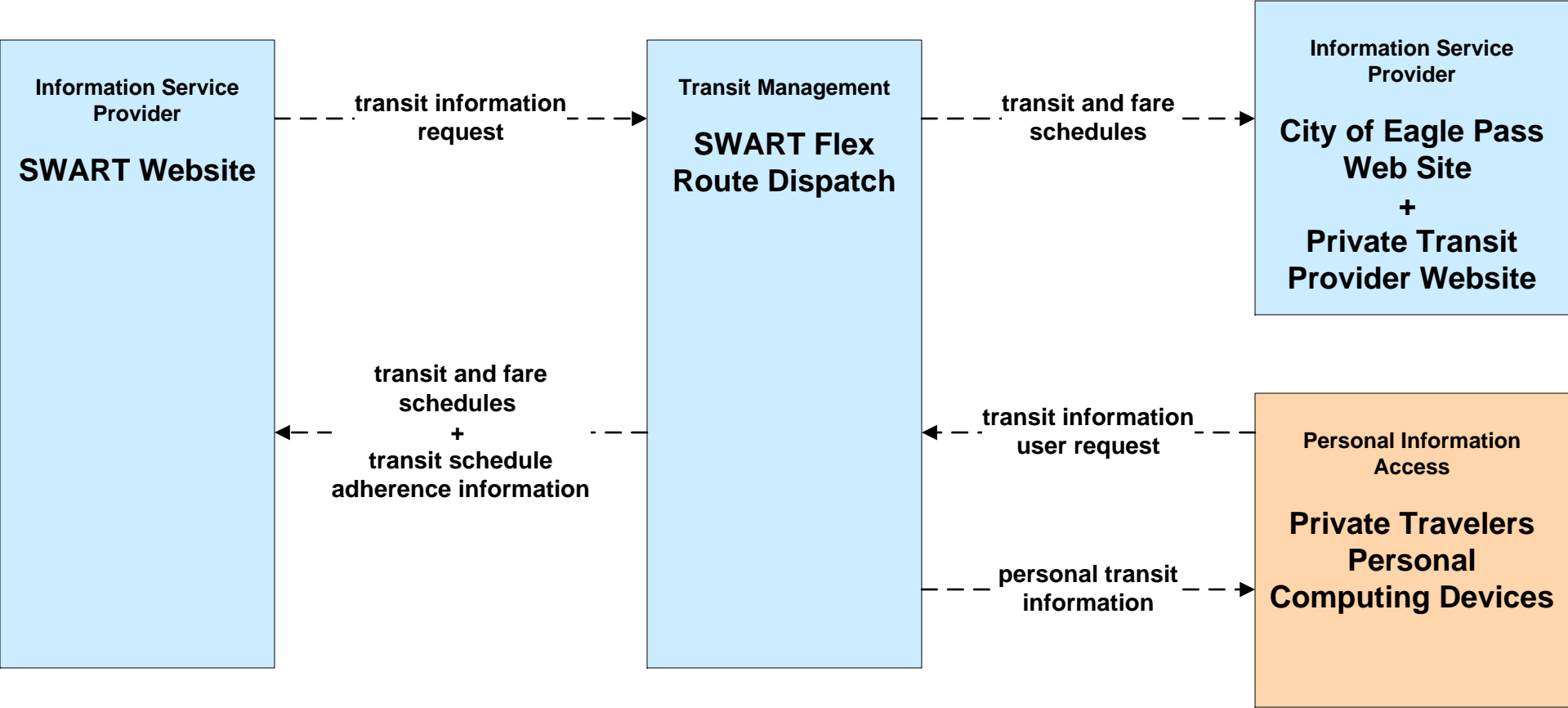
**APTS07 - Multimodal Coordination  
Southwest Area Regional Transit District**



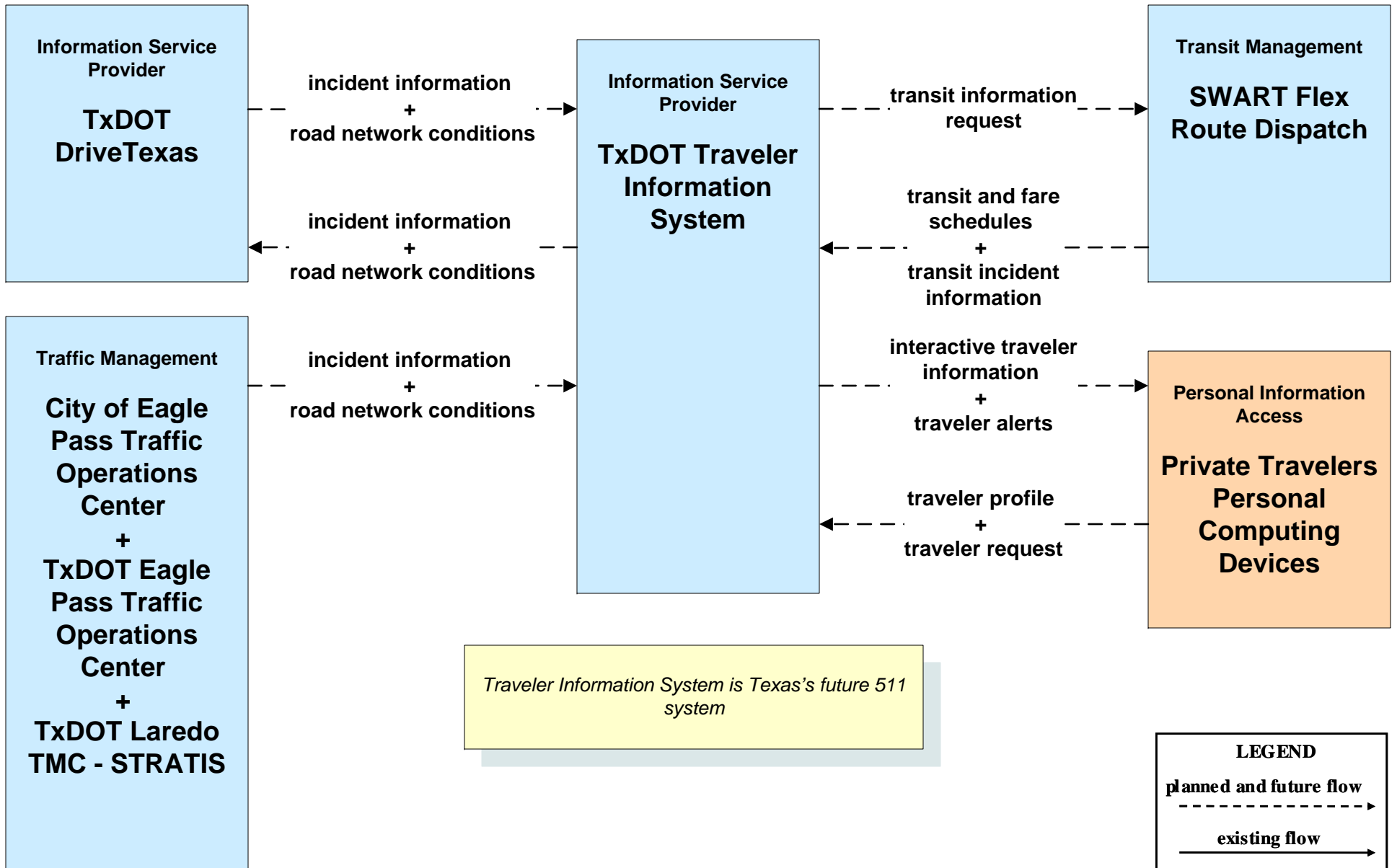
**APTS07 - Multimodal Coordination  
SWART DRT Subcontractors**



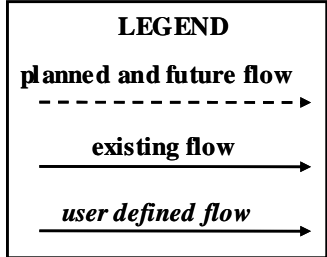
**APTS08 - Transit Traveler Information  
Southwest Area Regional Transit District**



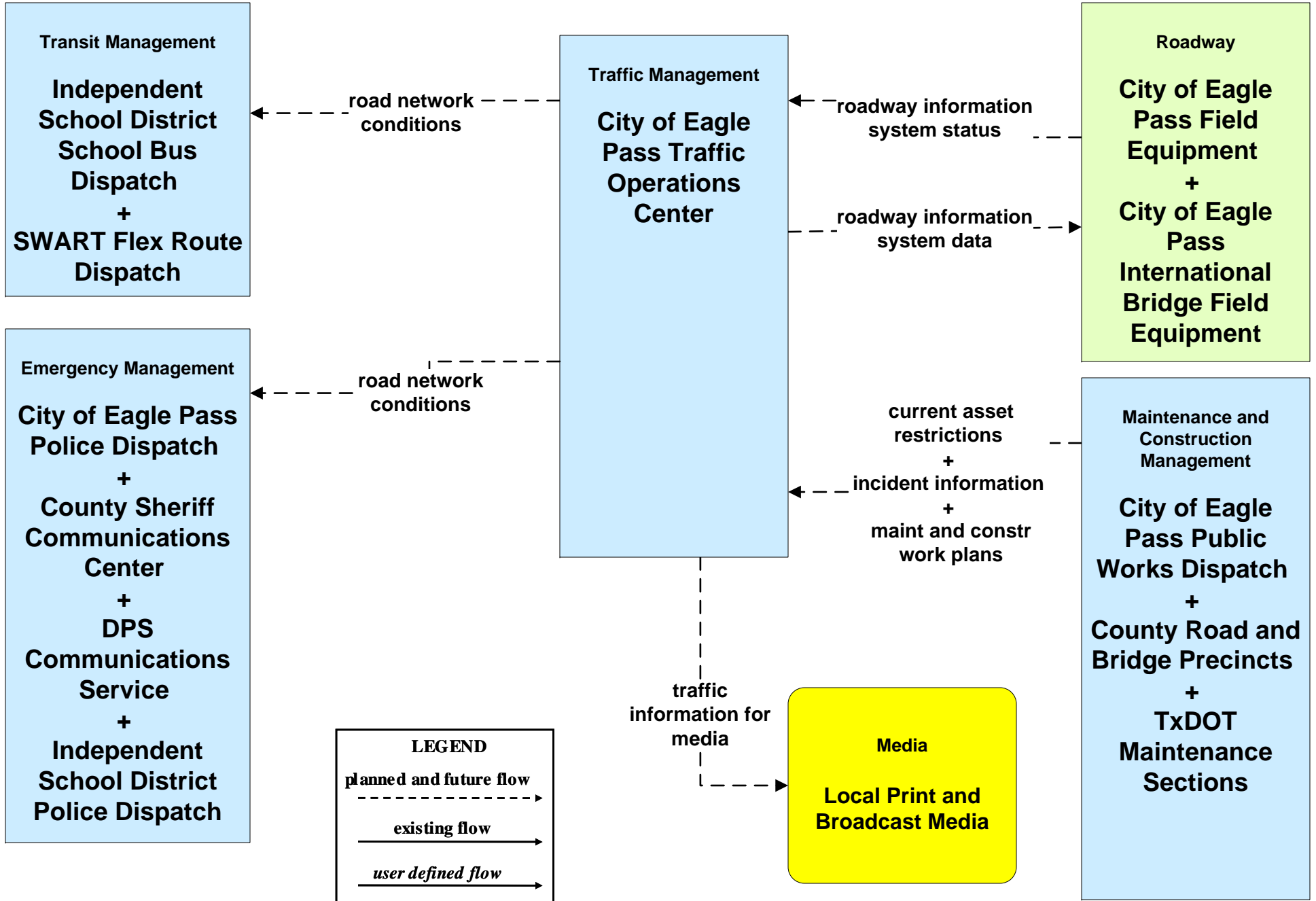
# ATIS02 - Interactive Traveler Information TxDOT Traveler Information System



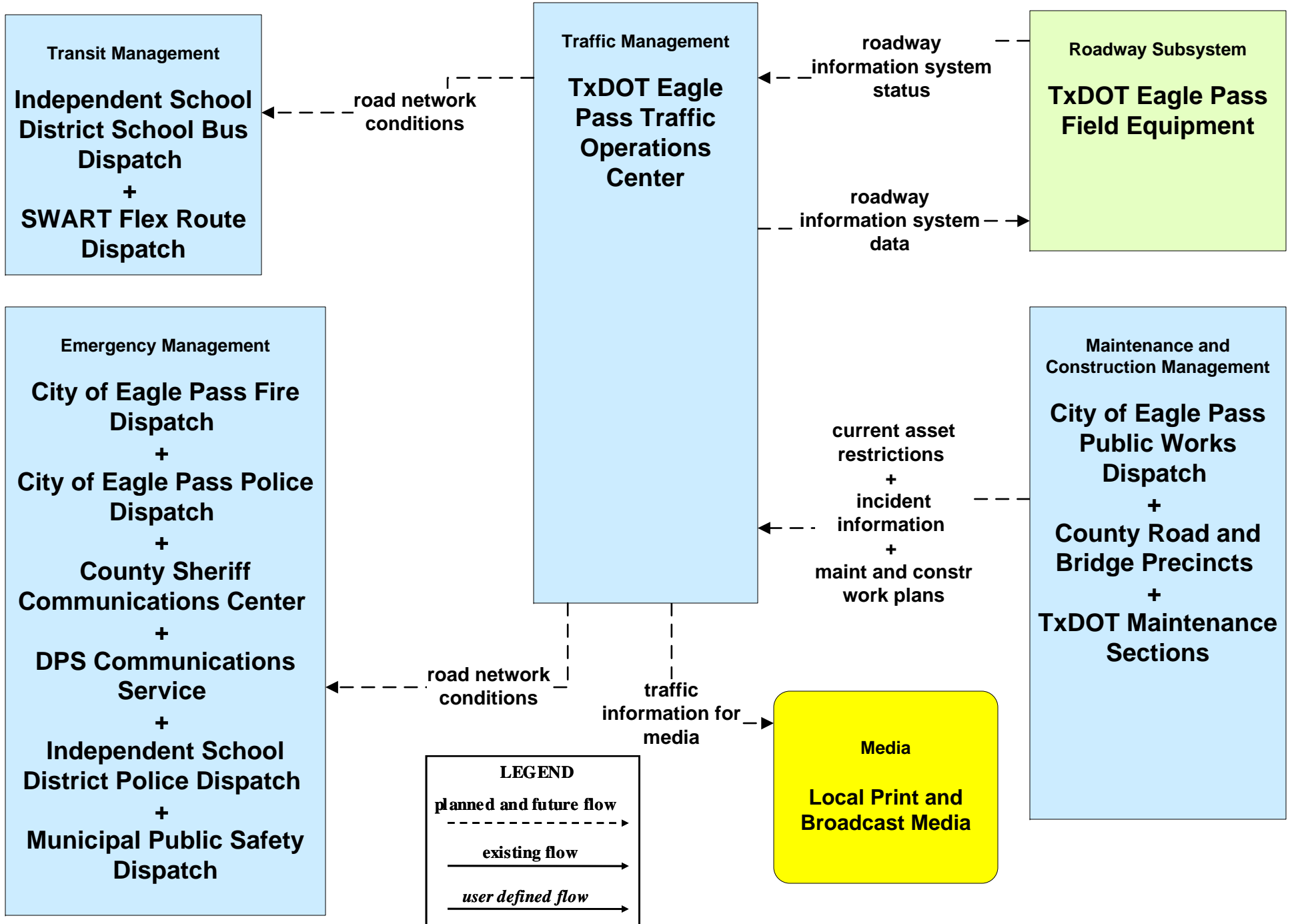
*Traveler Information System is Texas's future 511 system*



# ATMS06 - Traffic Information Dissemination City of Eagle Pass

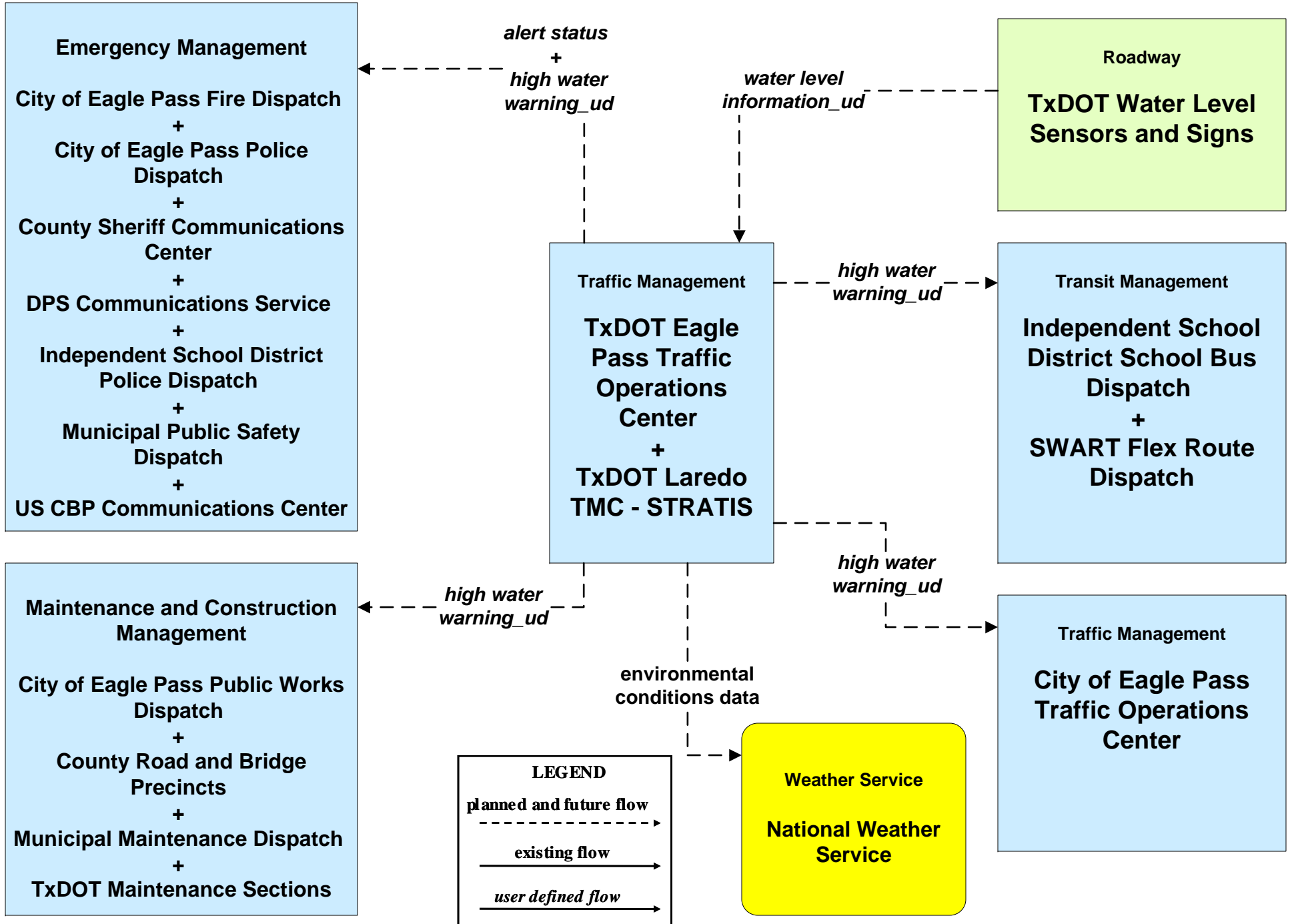


# ATMS06 - Traffic Information Dissemination TxDOT Eagle Pass



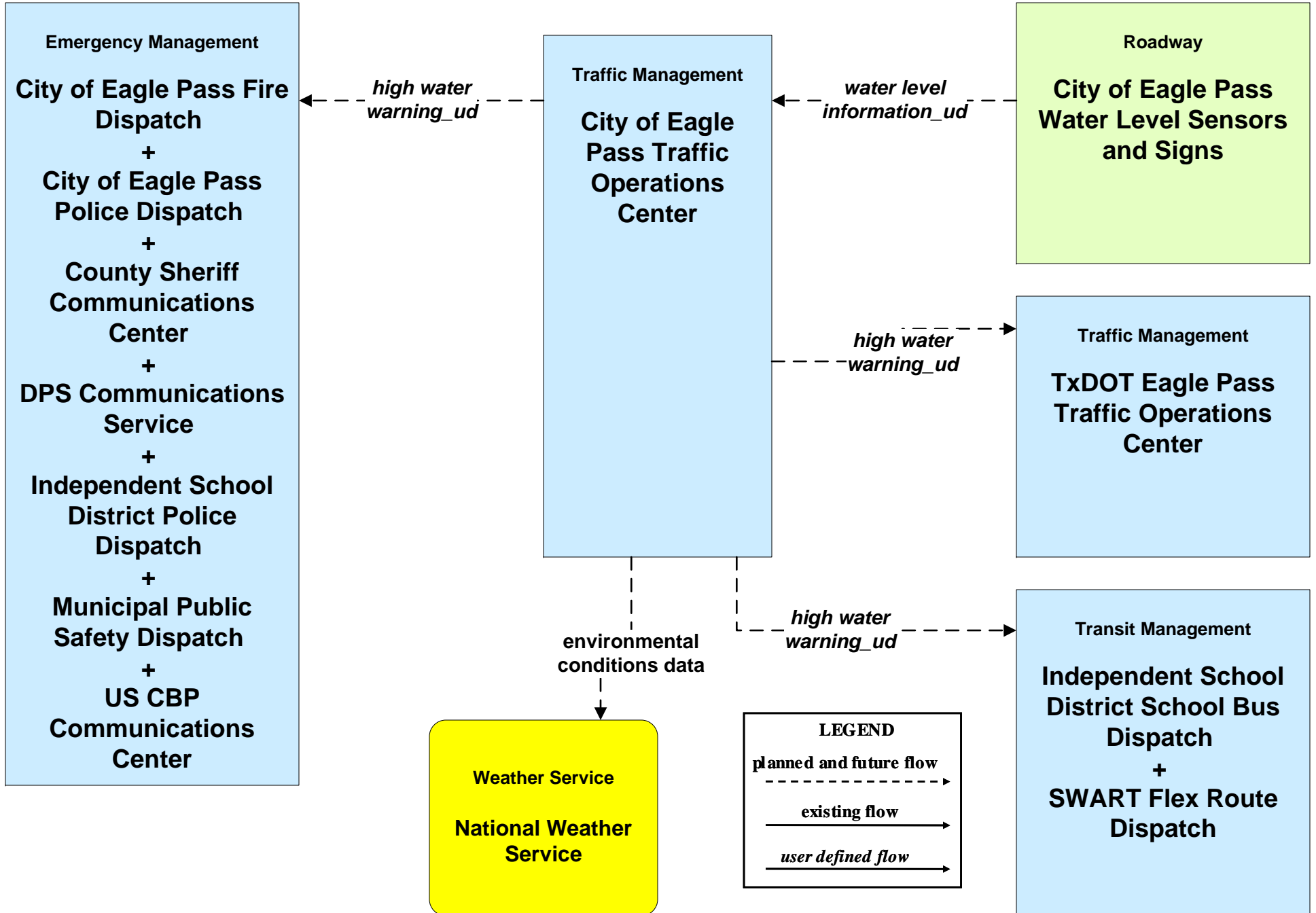
# ATMS08 – Traffic Incident Management System

## Flood Warning - TxDOT Eagle Pass

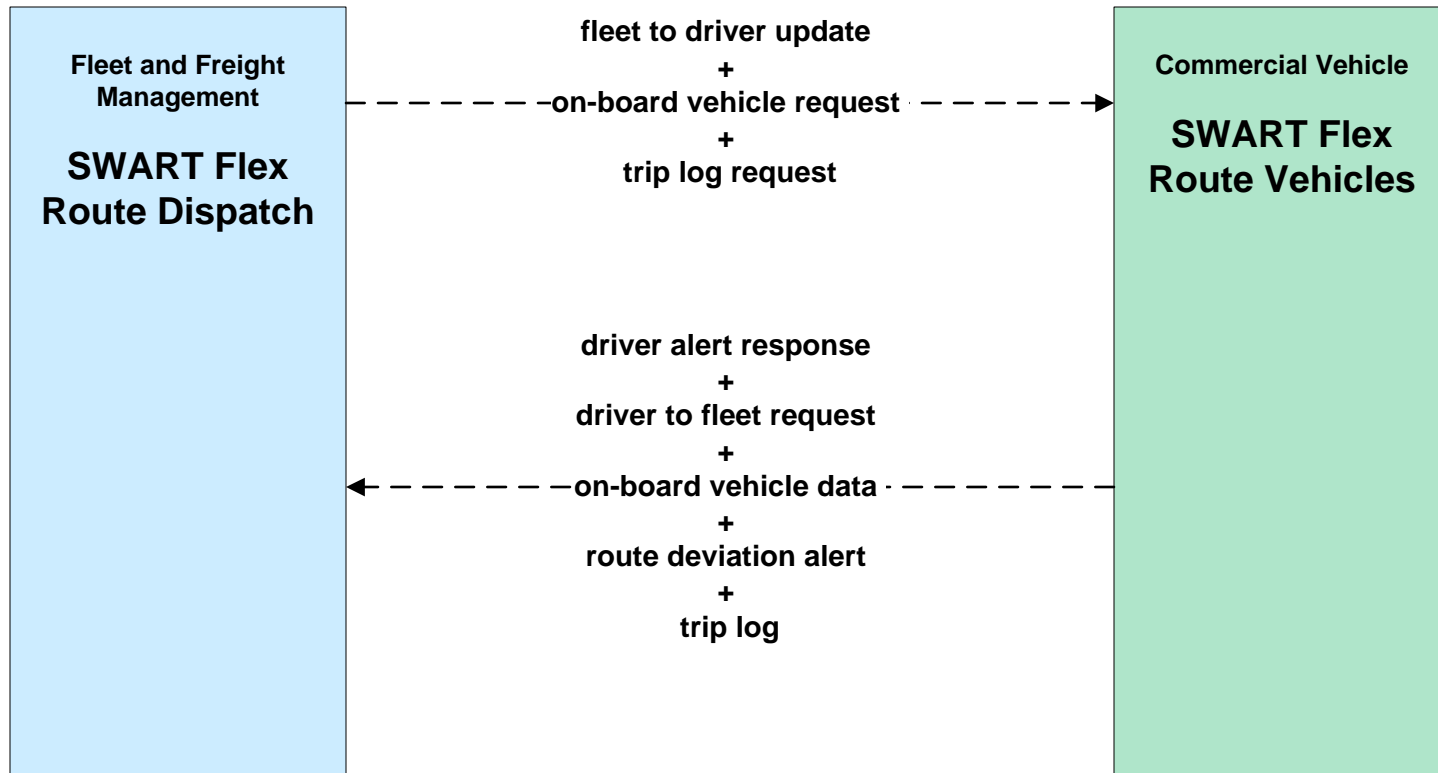




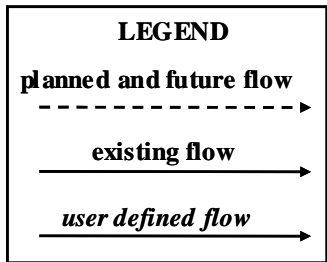
**ATMS08 – Traffic Incident Management System  
Flood Warning - City of Eagle Pass**



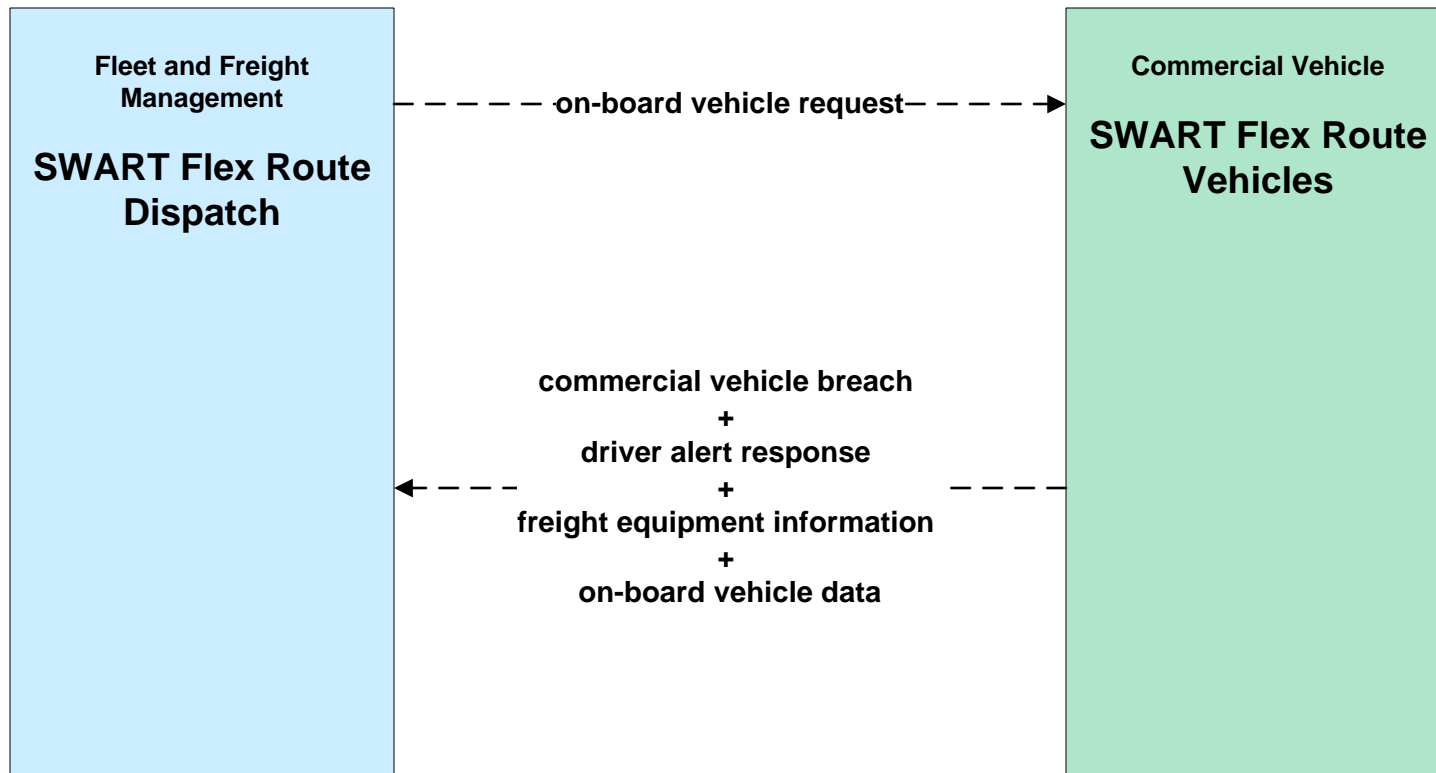
**CVO01 - Carrier Operations and Fleet Management  
Southwest Area Regional Transit District**



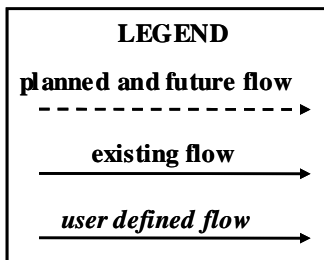
*In future, SWART may become responsible for transporting small freight on behalf of private transit providers.*



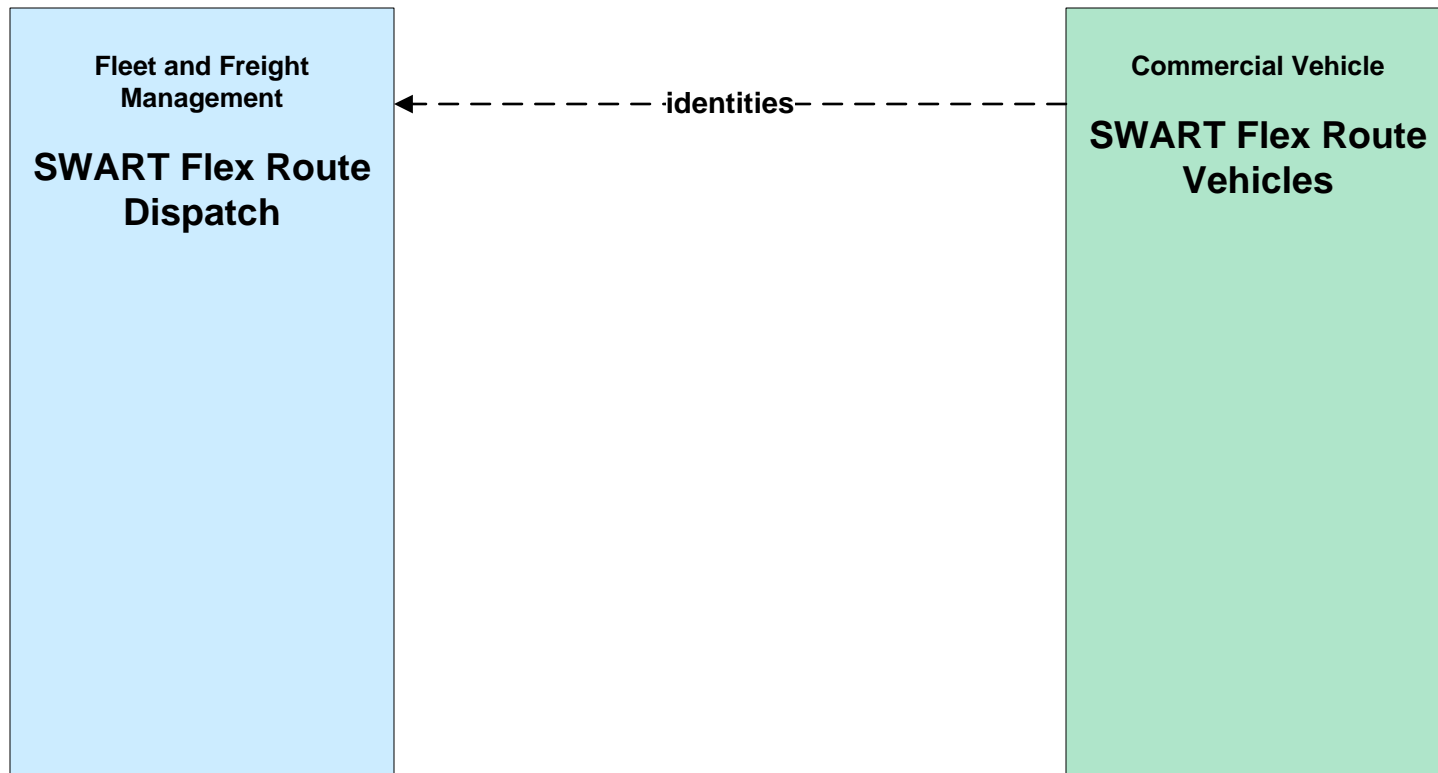
**CVO02 - Freight Administration  
Southwest Area Regional Transit District**



*In future, SWART may become responsible for transporting small freight on behalf of private transit providers.*



**CVO13 - Freight Assignment Tracking  
Southwest Area Regional Transit District**

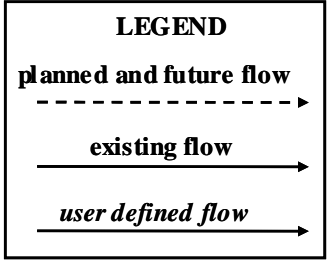
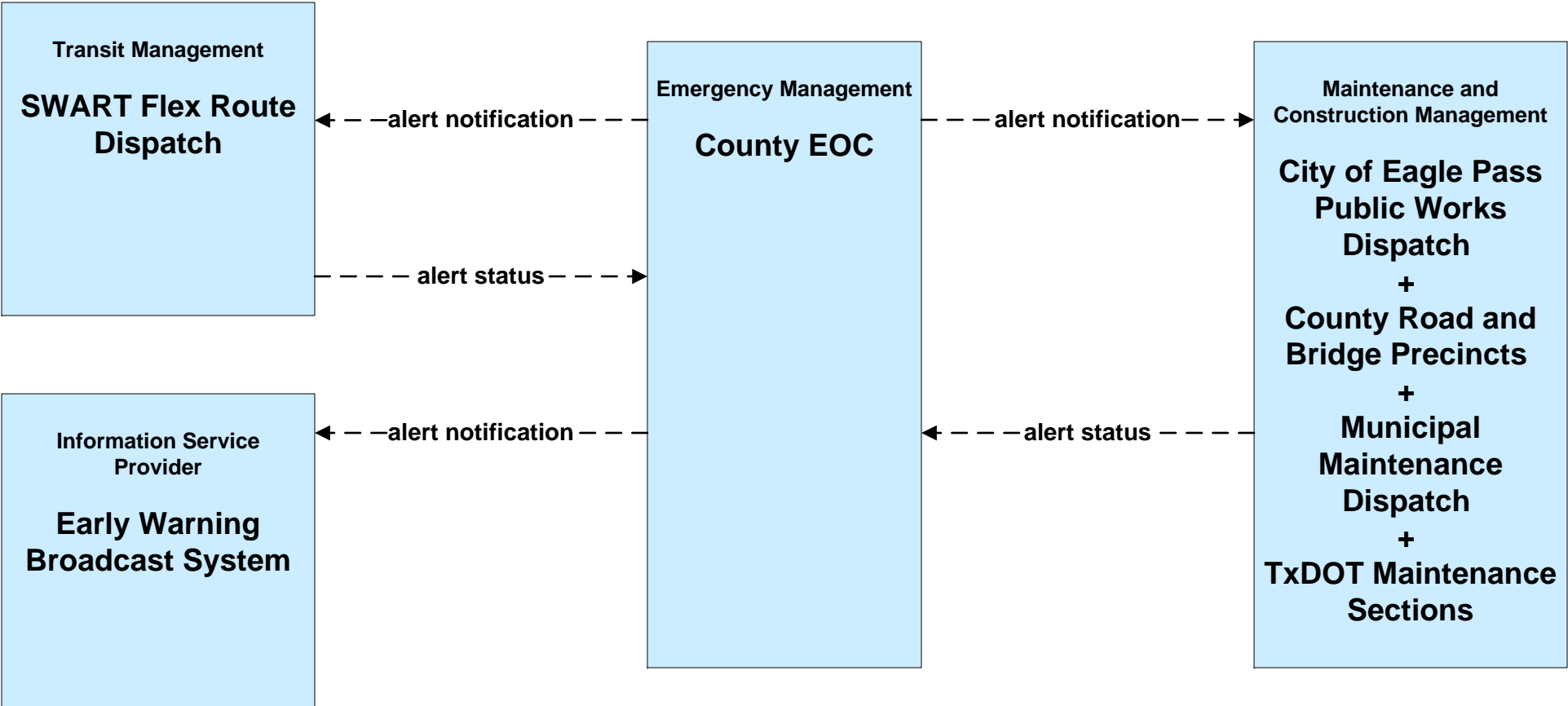


*In future, SWART may become responsible for transporting small freight on behalf of private transit providers.*

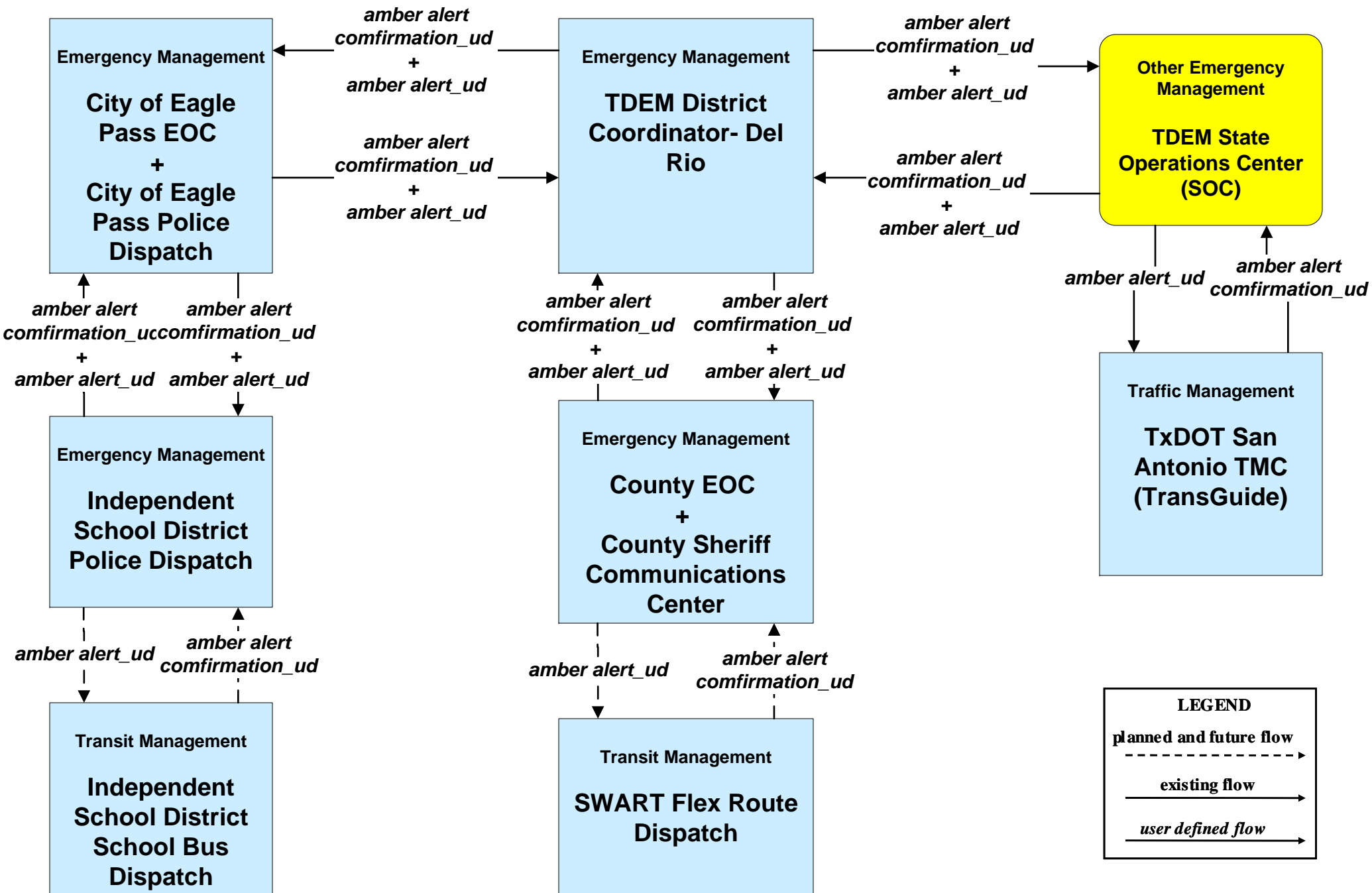
**LEGEND**

- planned and future flow** (dashed arrow)
- existing flow** (solid arrow)
- user defined flow** (solid arrow)

**EM06 - Wide-Area Alert  
County EOC (2 of 2)**



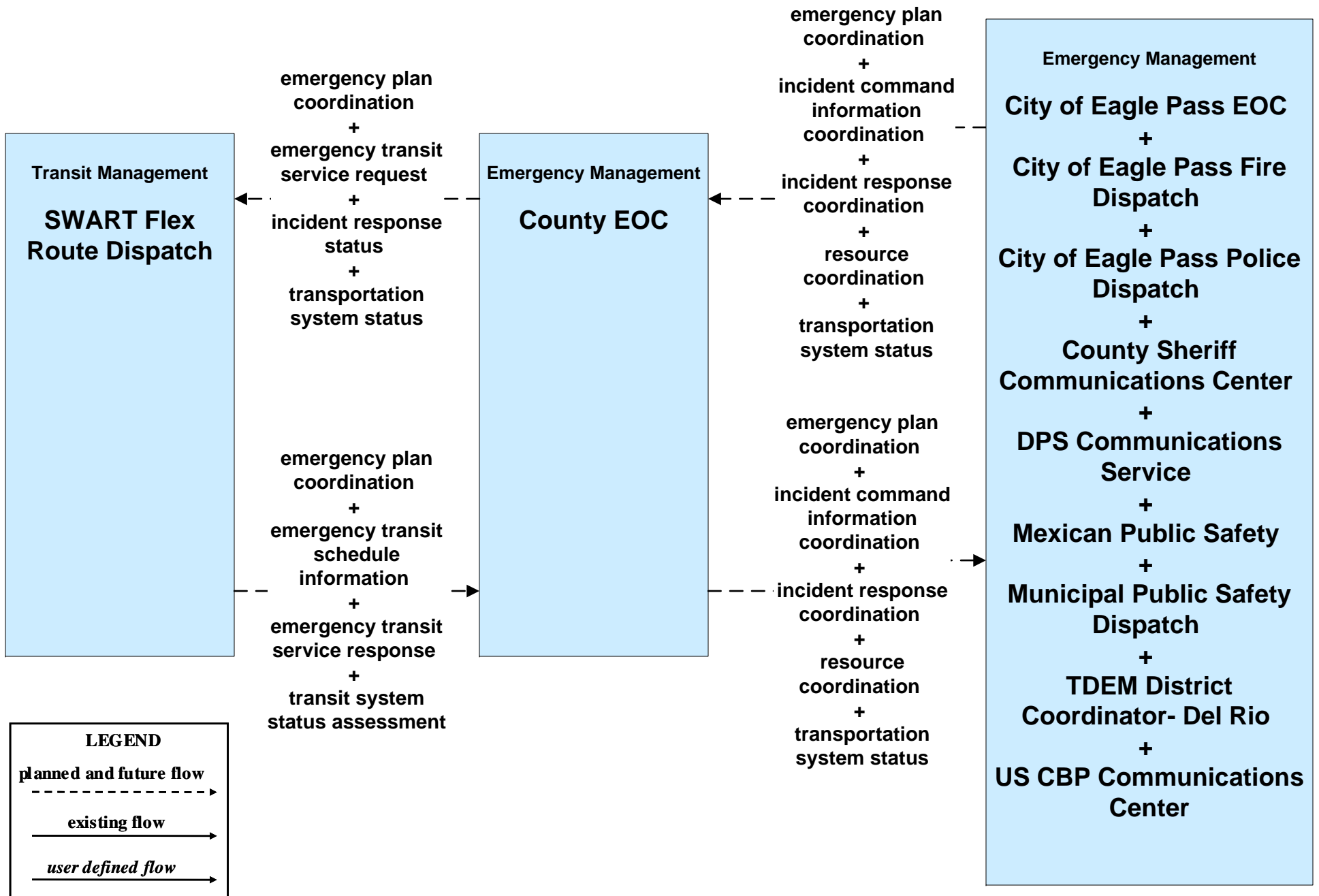
**EM06 - Wide-Area Alert  
Amber Alert (TDEM)**



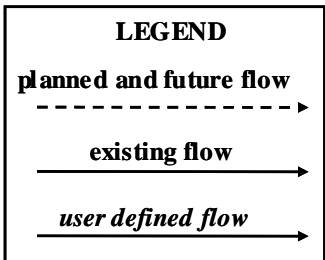
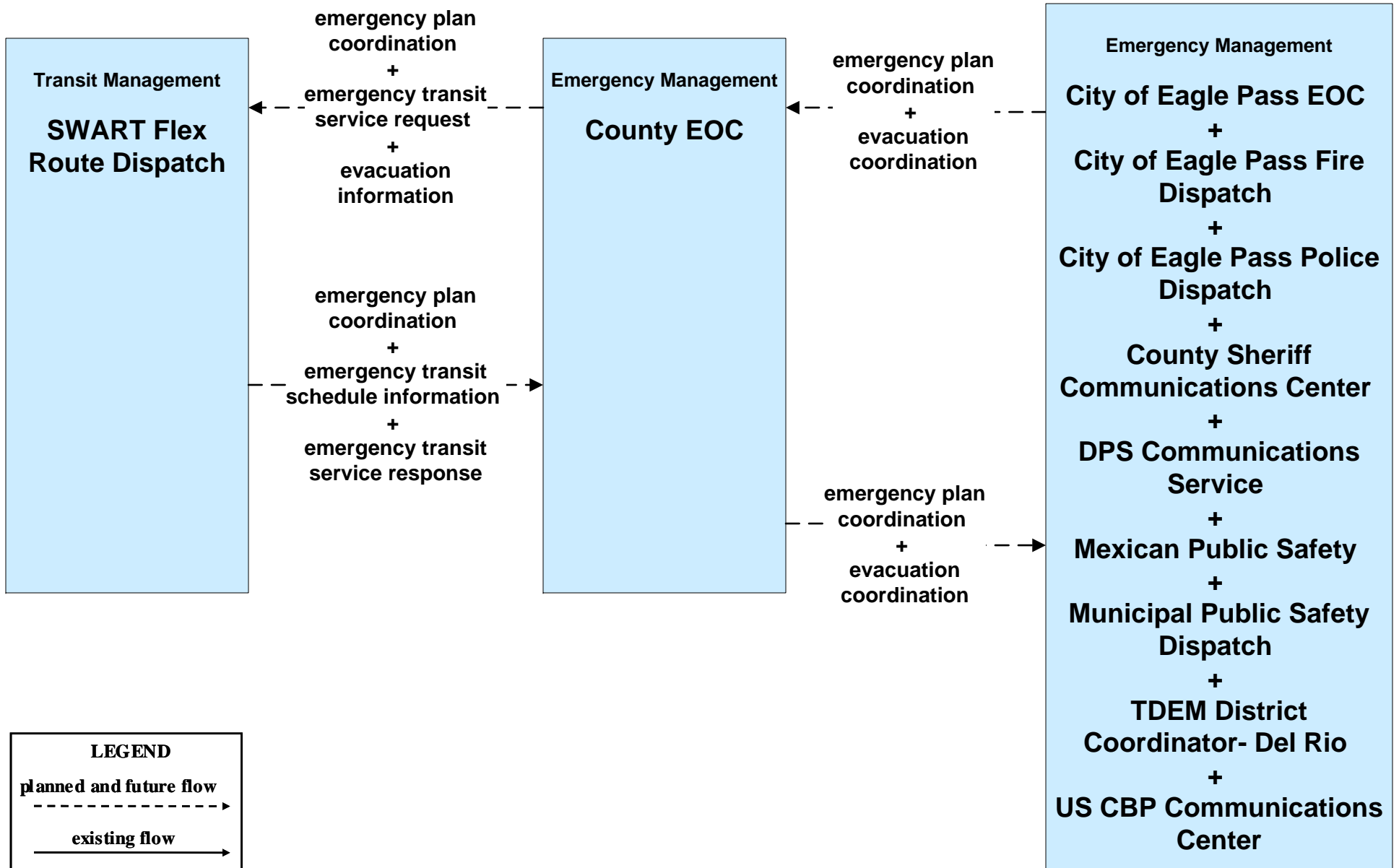
**LEGEND**

- planned and future flow* (dashed arrow)
- existing flow* (solid arrow)
- user defined flow* (solid arrow)

**EM08 - Disaster Response and Recovery  
County EOC (2 of 2)**

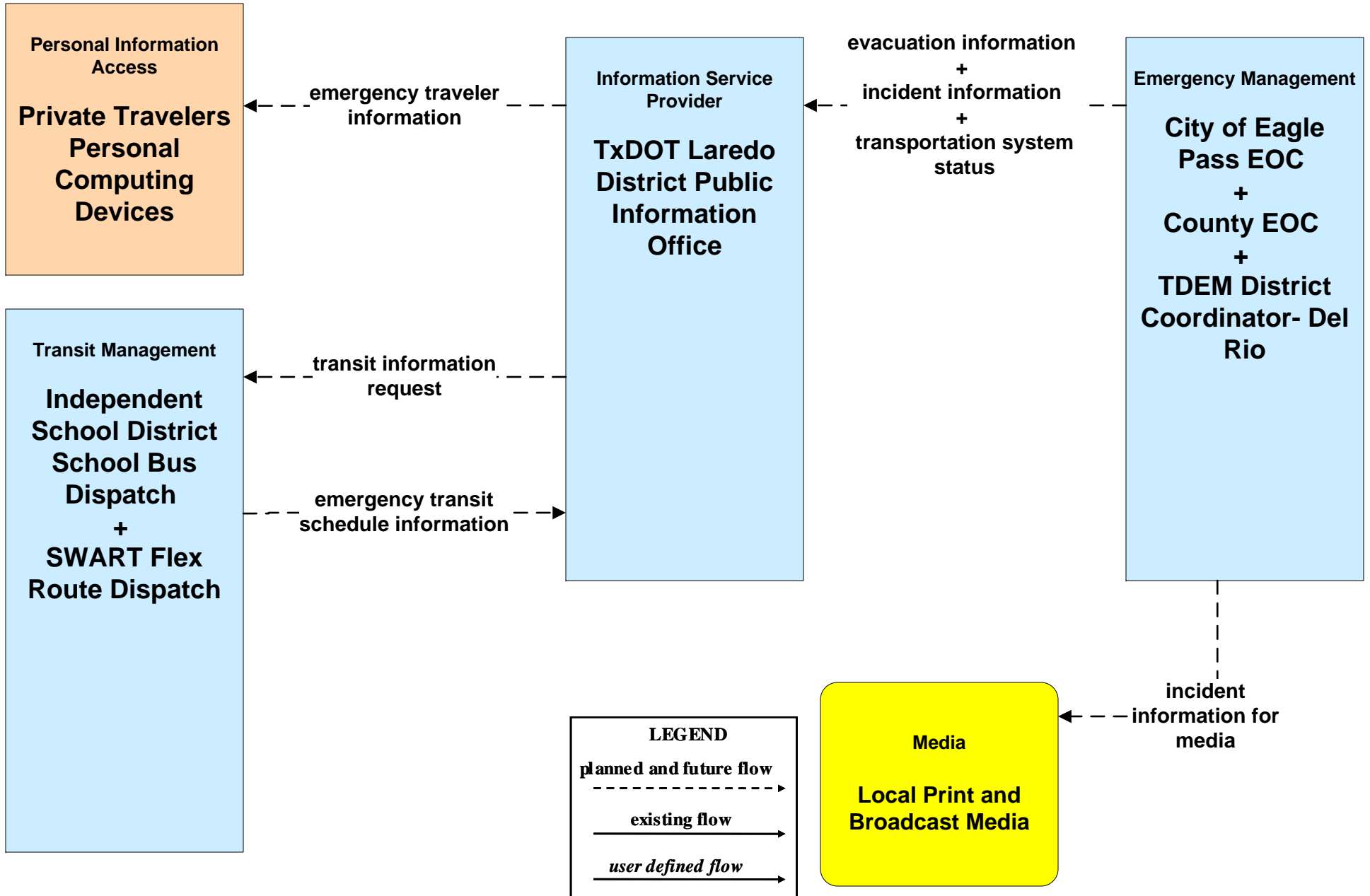


**EM09 - Evacuation and Reentry Management  
County EOC (1 of 2)**

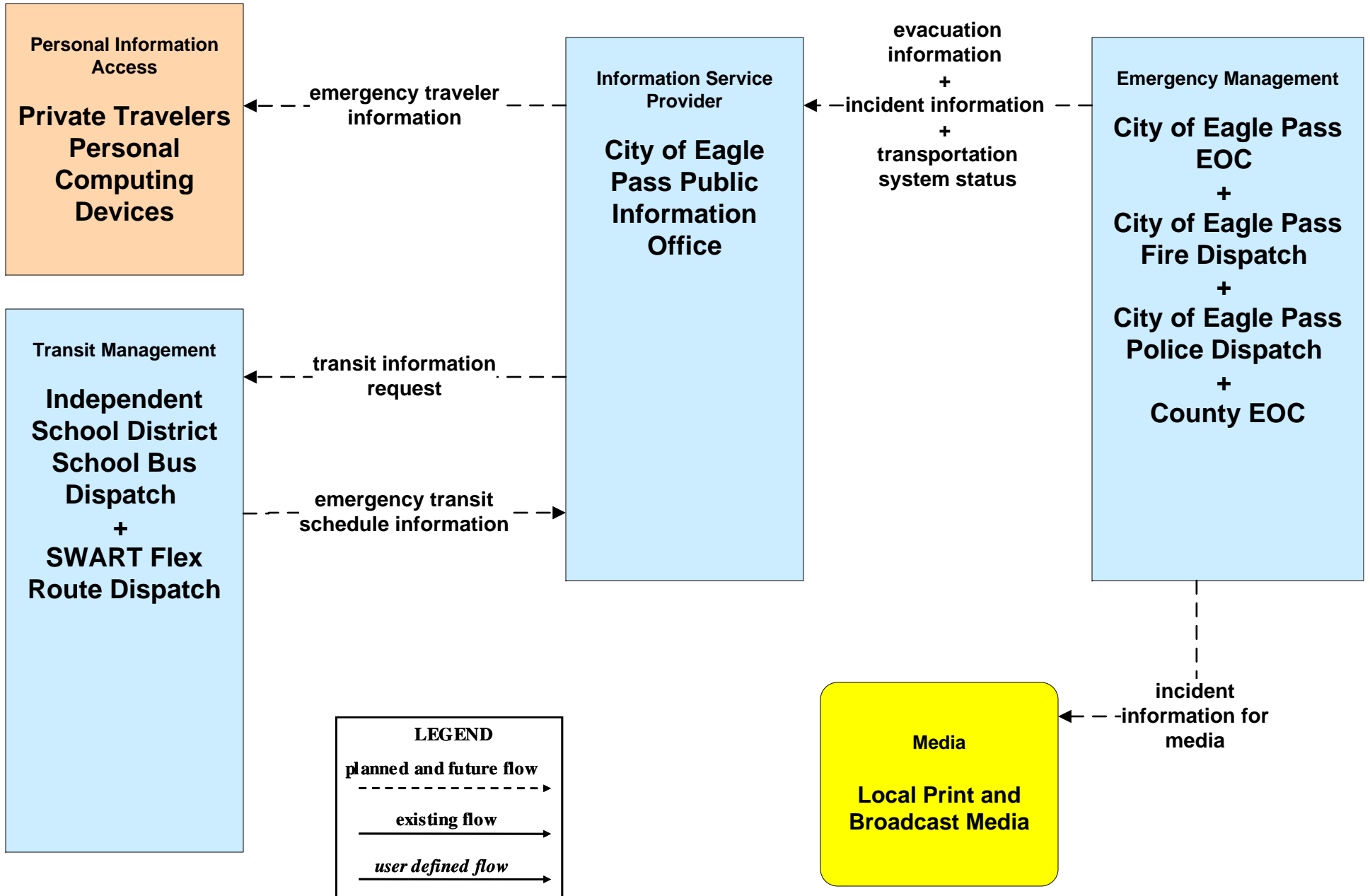




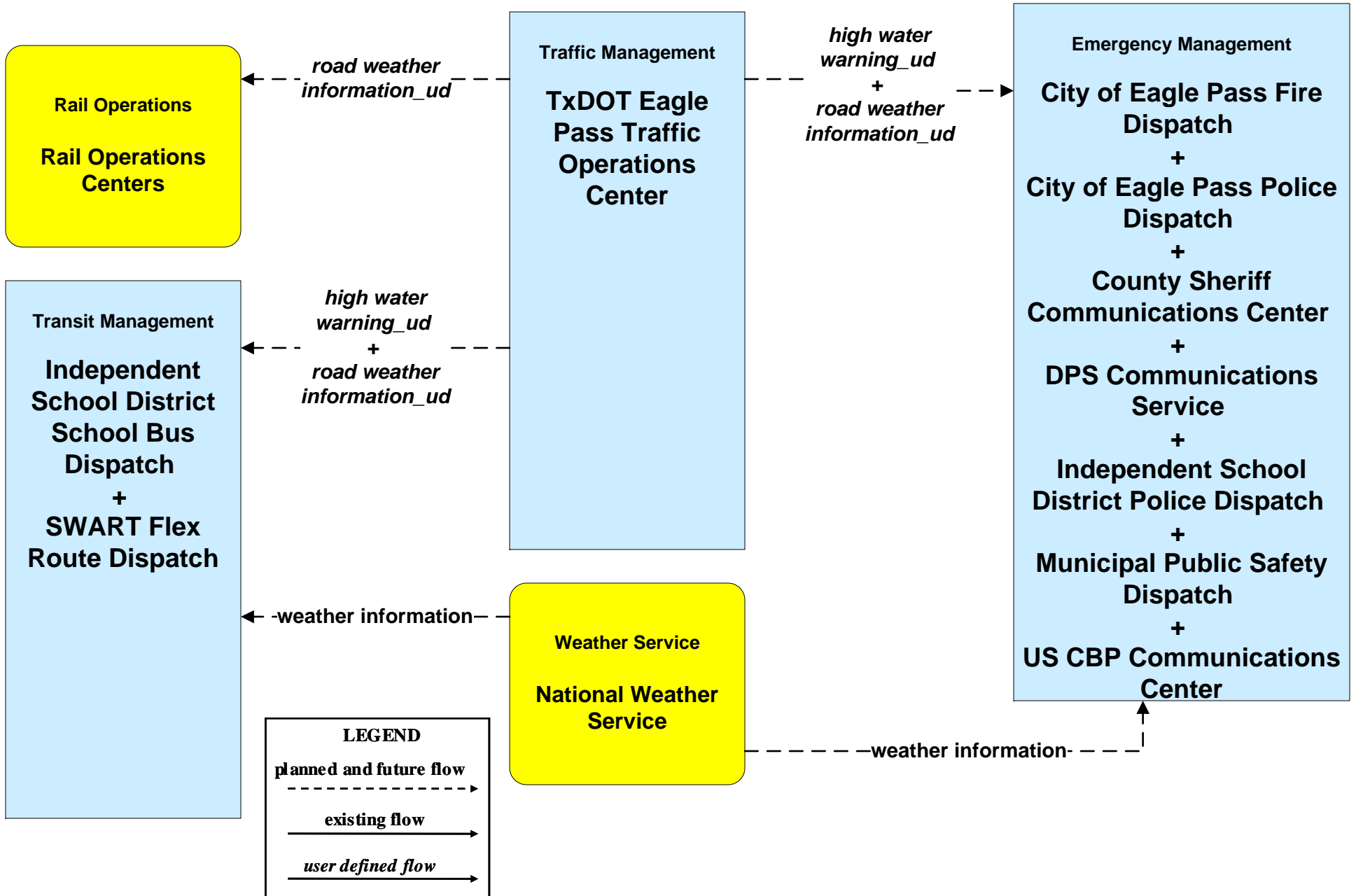
**EM10 - Disaster Traveler Information  
TxDOT**



# EM10 - Disaster Traveler Information City of Eagle Pass



**MC04 - Weather Information Processing and Distribution  
TxDOT Eagle Pass (2 of 2)**



**MC08 - Work Zone Management  
TxDOT Maintenance Sections (2 of 2)**

**Emergency Management**

**City of Eagle  
Pass Fire  
Dispatch  
+  
City of Eagle  
Pass Police  
Dispatch  
+  
County Sheriff  
Communications  
Center  
+  
DPS  
Communications  
Service  
+  
Independent  
School District  
Police Dispatch  
+  
Municipal Public  
Safety Dispatch**

**Maintenance and  
Construction  
Management**

**TxDOT  
Maintenance  
Sections**

**Information Service  
Provider**

**TxDOT Traveler  
Information System  
+  
TxDOT DriveTexas  
+  
TxDOT Statewide  
ITS Website**

**Transit Management**

**Independent School  
District School Bus  
Dispatch  
+  
SWART Flex Route  
Dispatch**

**LEGEND**

*planned and future flow* →

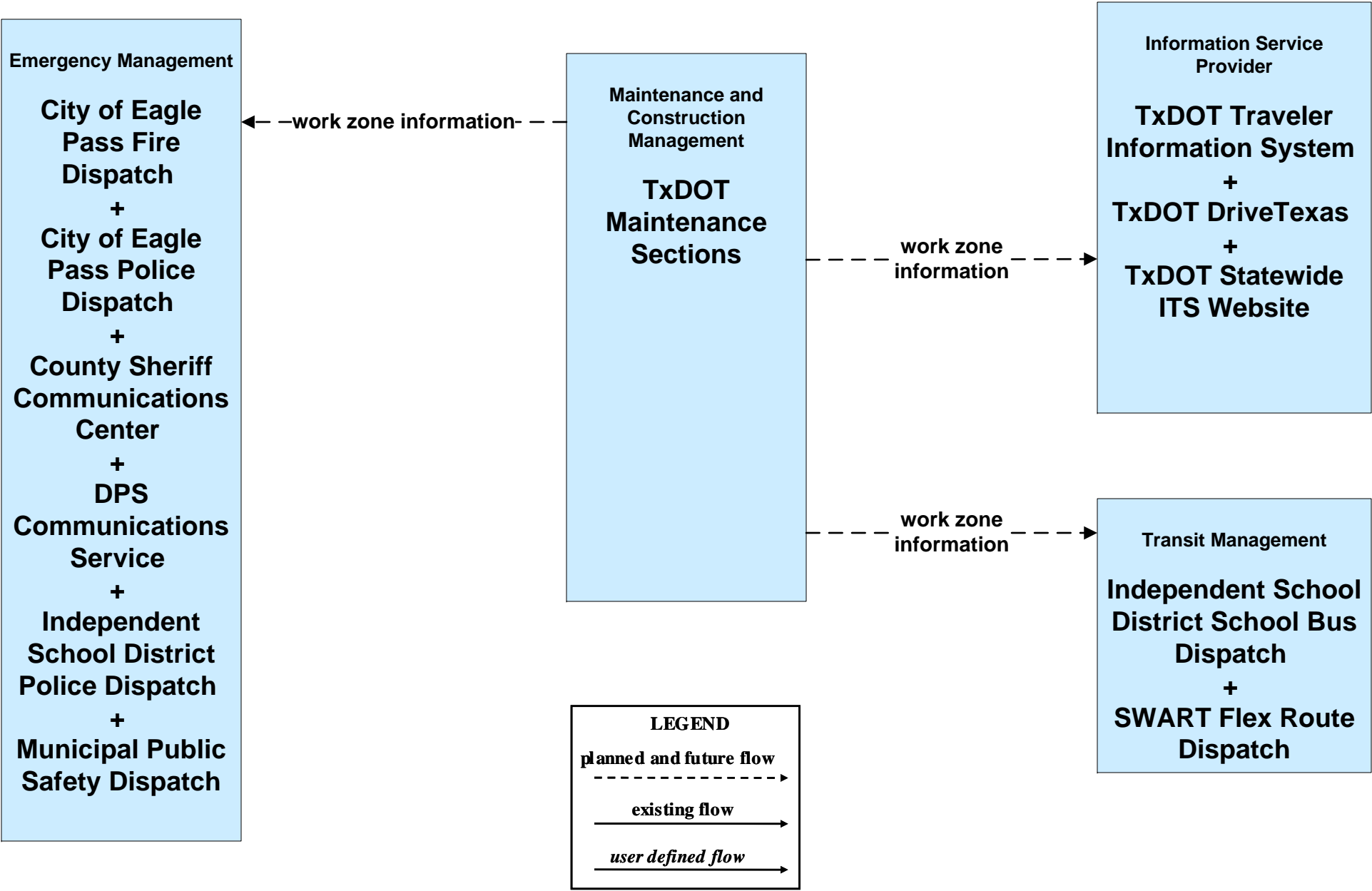
*existing flow* →

*user defined flow* →

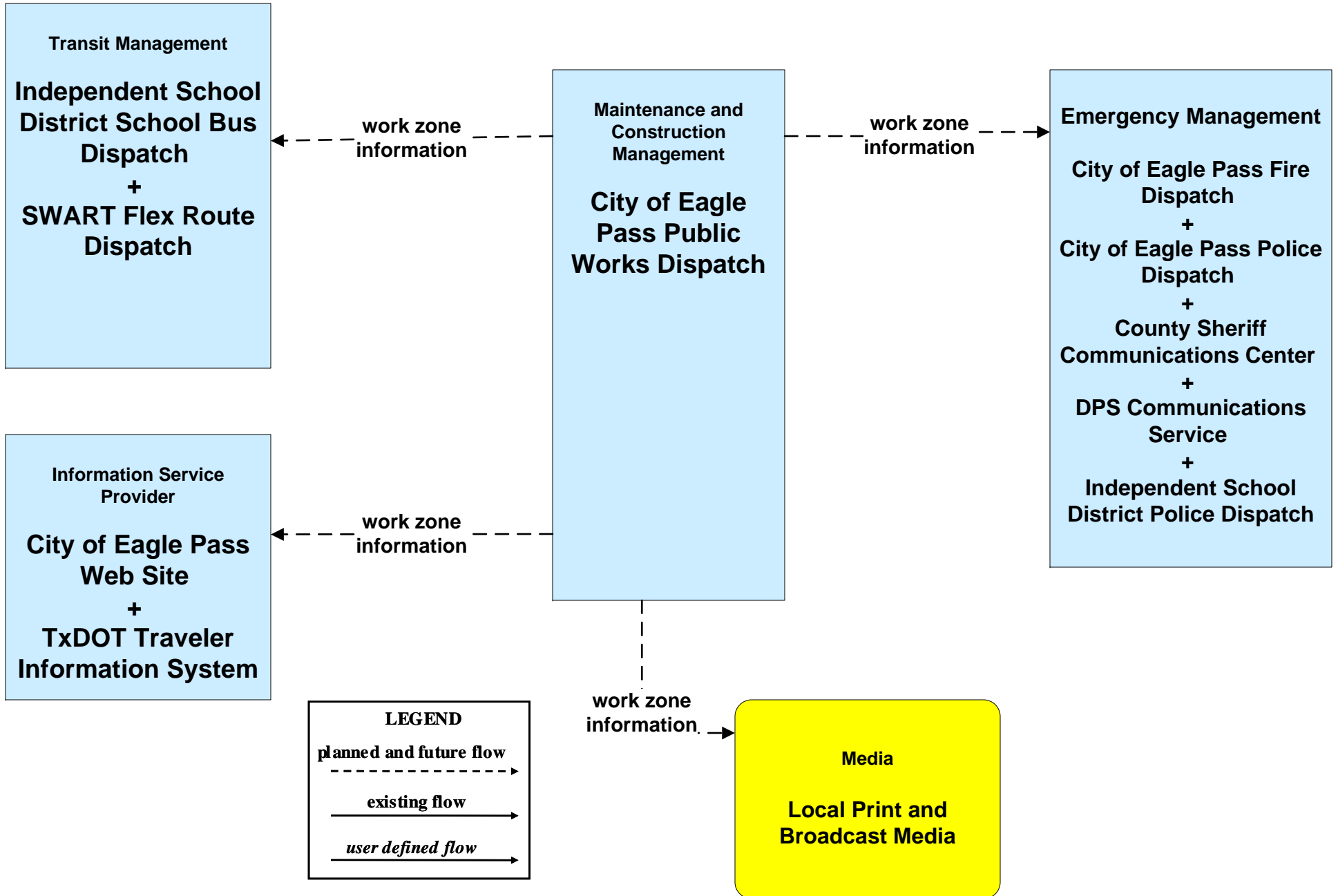
← *work zone information* →

→ *work zone information* →

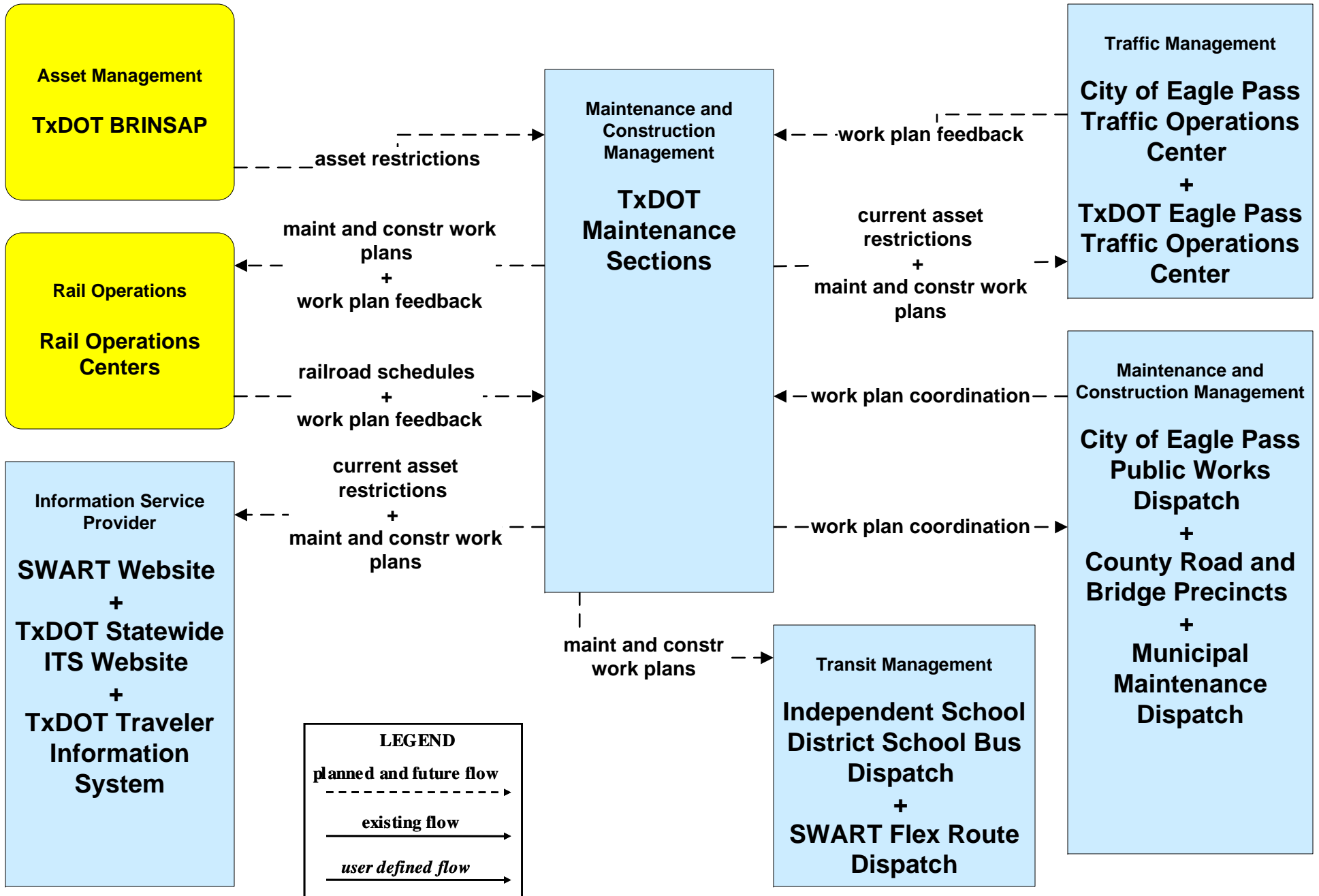
→ *work zone information* →



**MC08 - Work Zone Management  
City of Eagle Pass Maintenance (2 of 2)**



**MC10 - Maintenance and Construction Activity Coordination  
TxDOT Maintenance Sections (1 of 2)**



**MC10 - Maintenance and Construction Activity Coordination  
City of Eagle Pass (1 of 2)**

