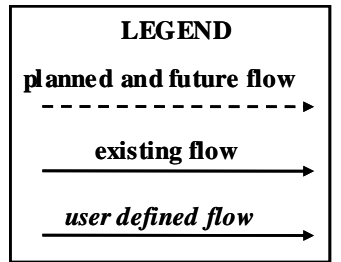
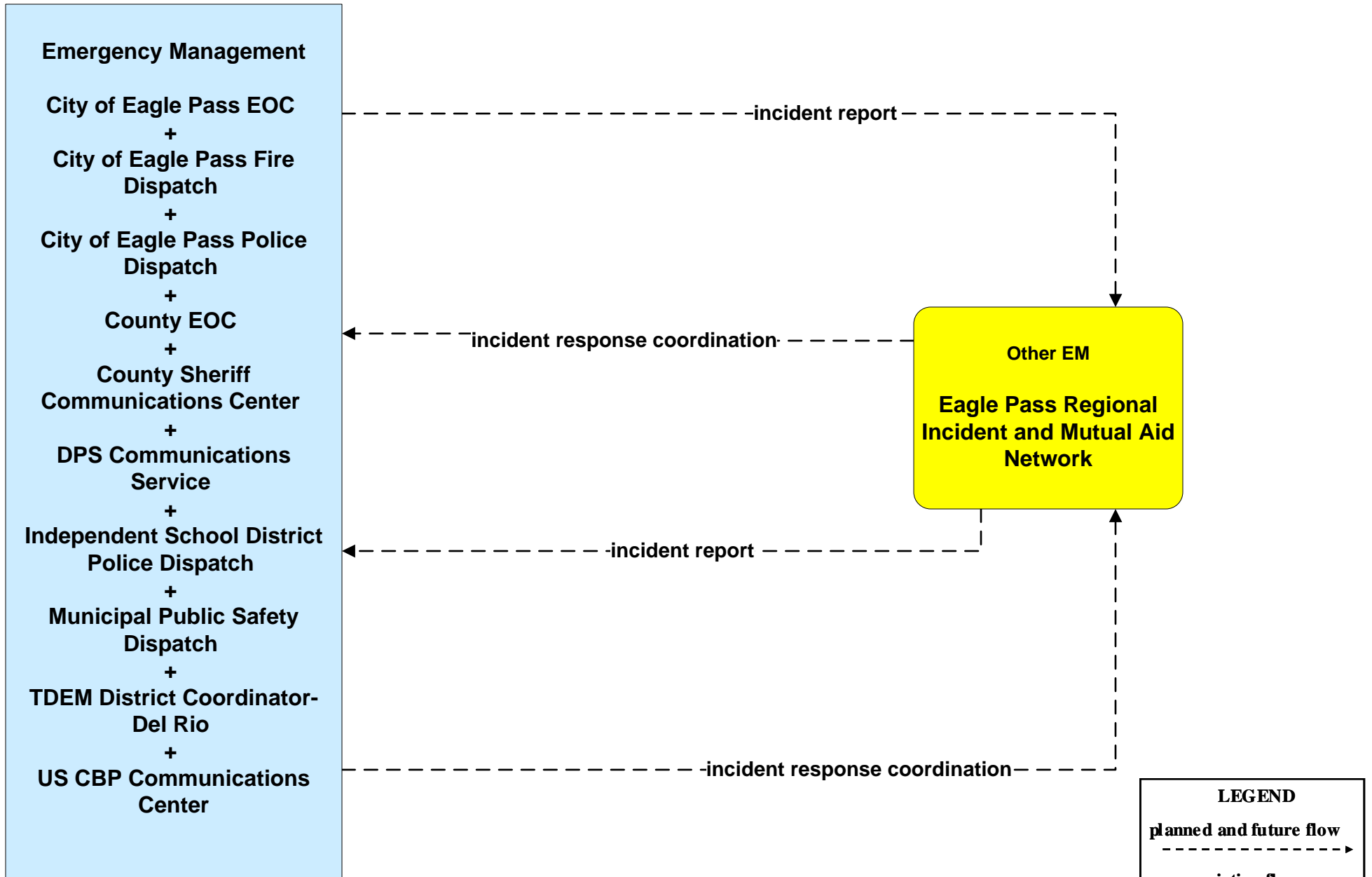
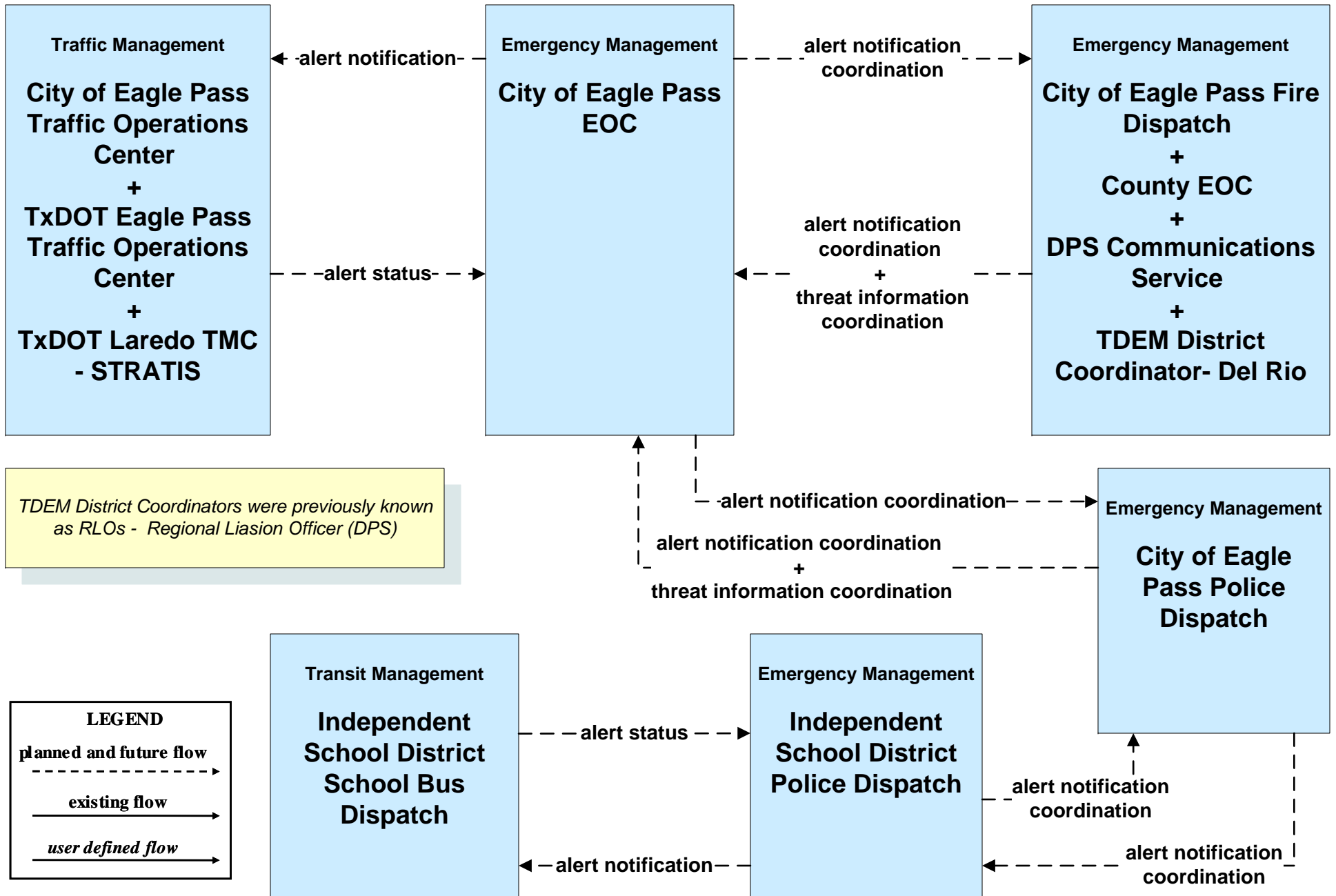


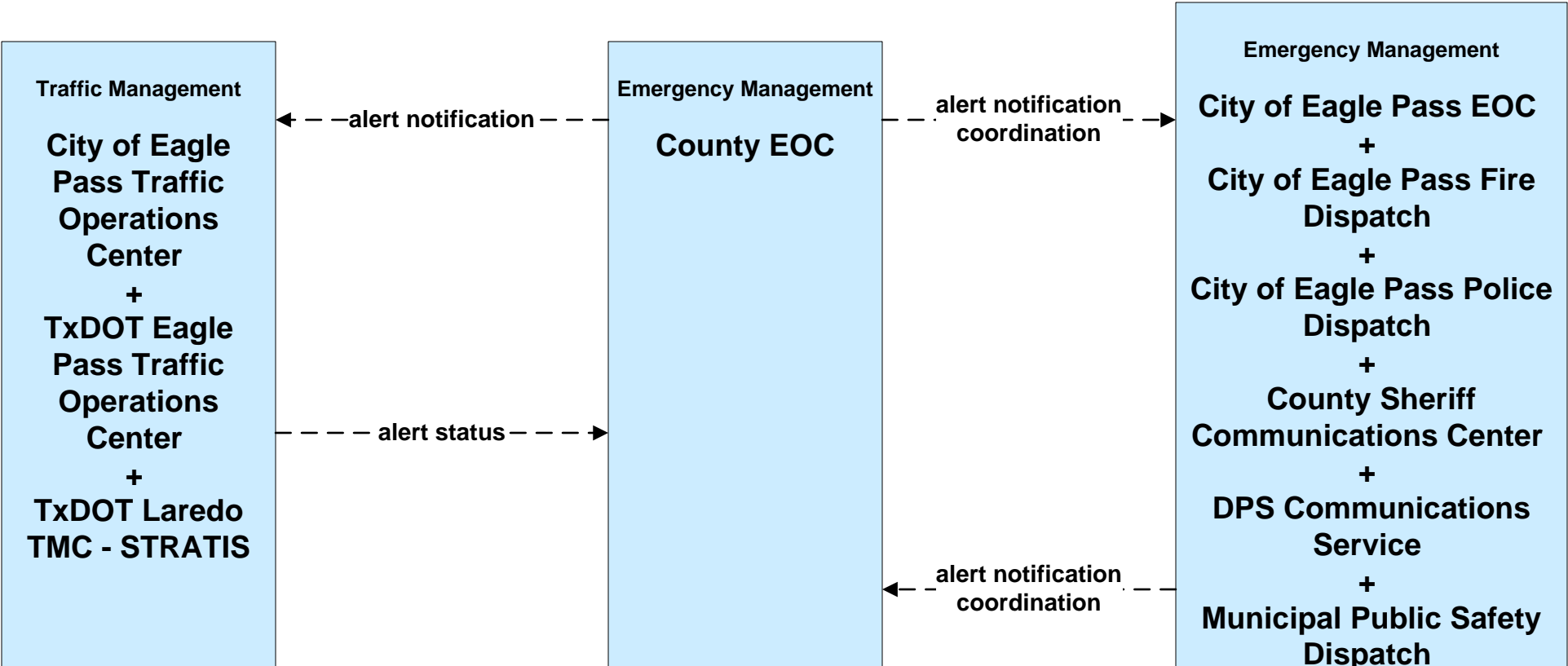
**EM01 - Emergency Call-Taking and Dispatch  
Eagle Pass Regional Incident and Mutual Aid Network**



**EM06 - Wide-Area Alert  
City of Eagle Pass EOC (1 of 2)**



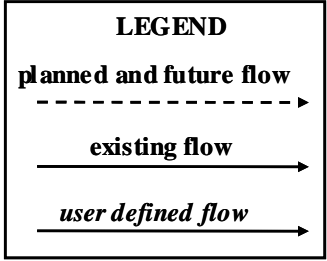
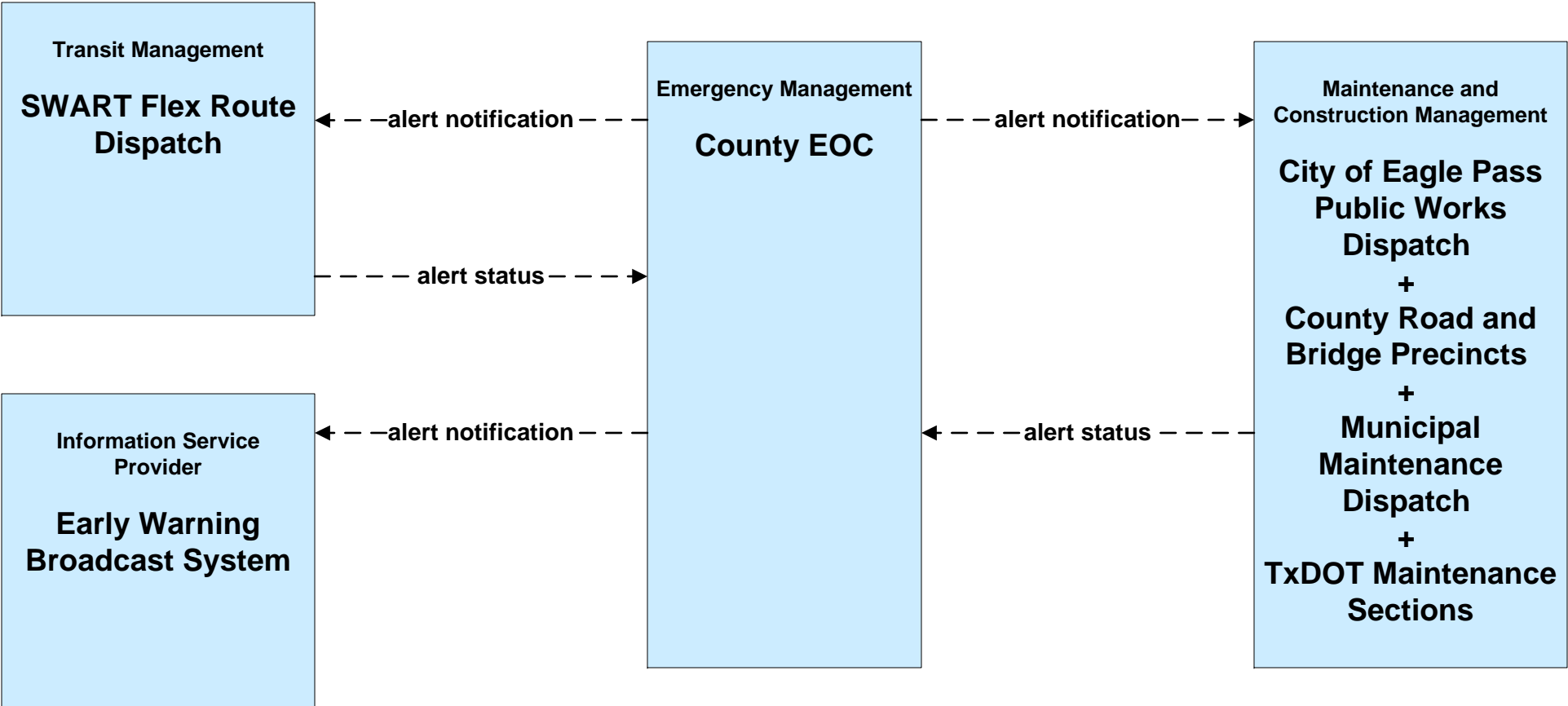
**EM06 - Wide-Area Alert  
County EOC (1 of 2)**



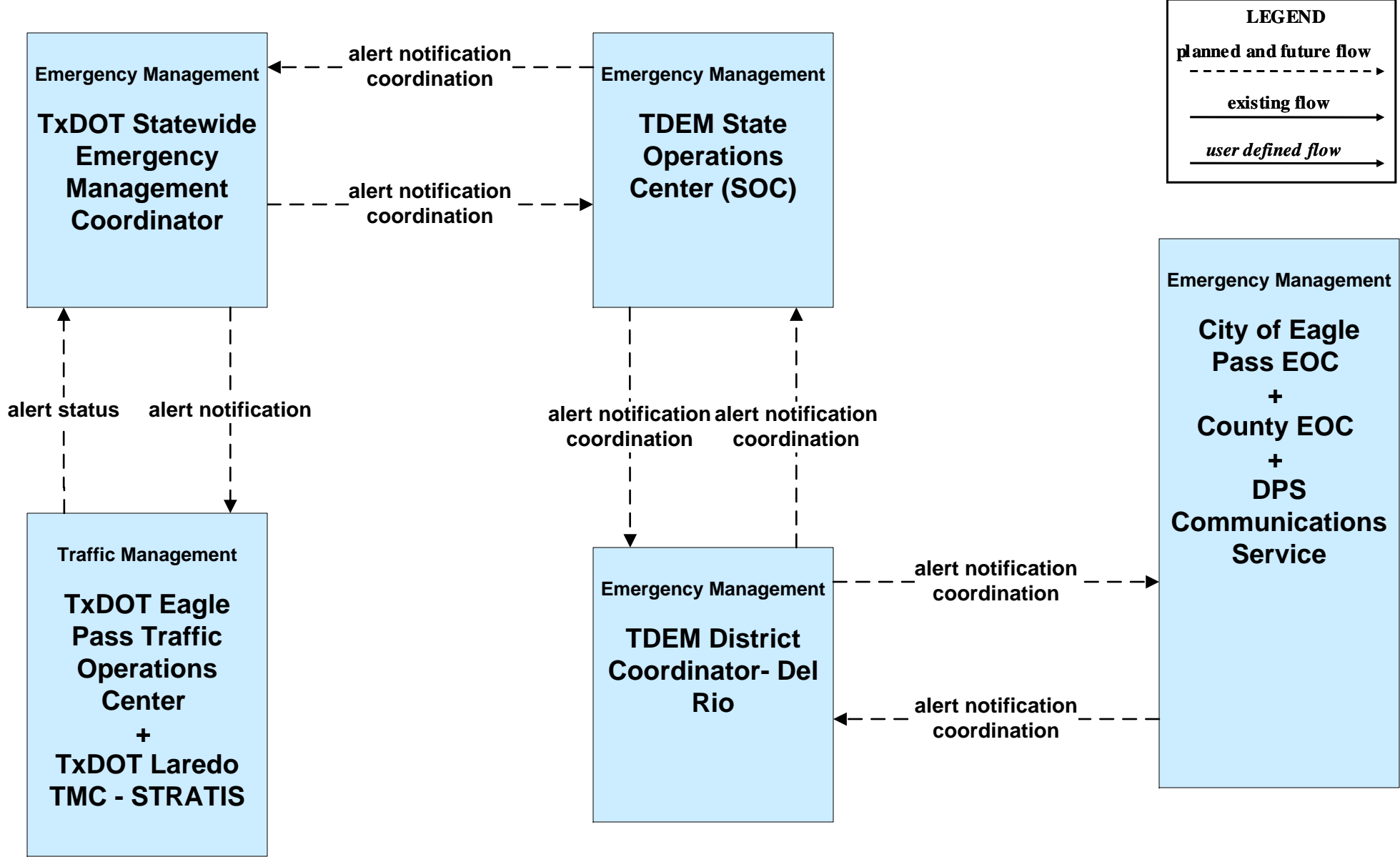
**LEGEND**

- planned and future flow* (dashed arrow)
- existing flow* (solid arrow)
- user defined flow* (solid arrow)

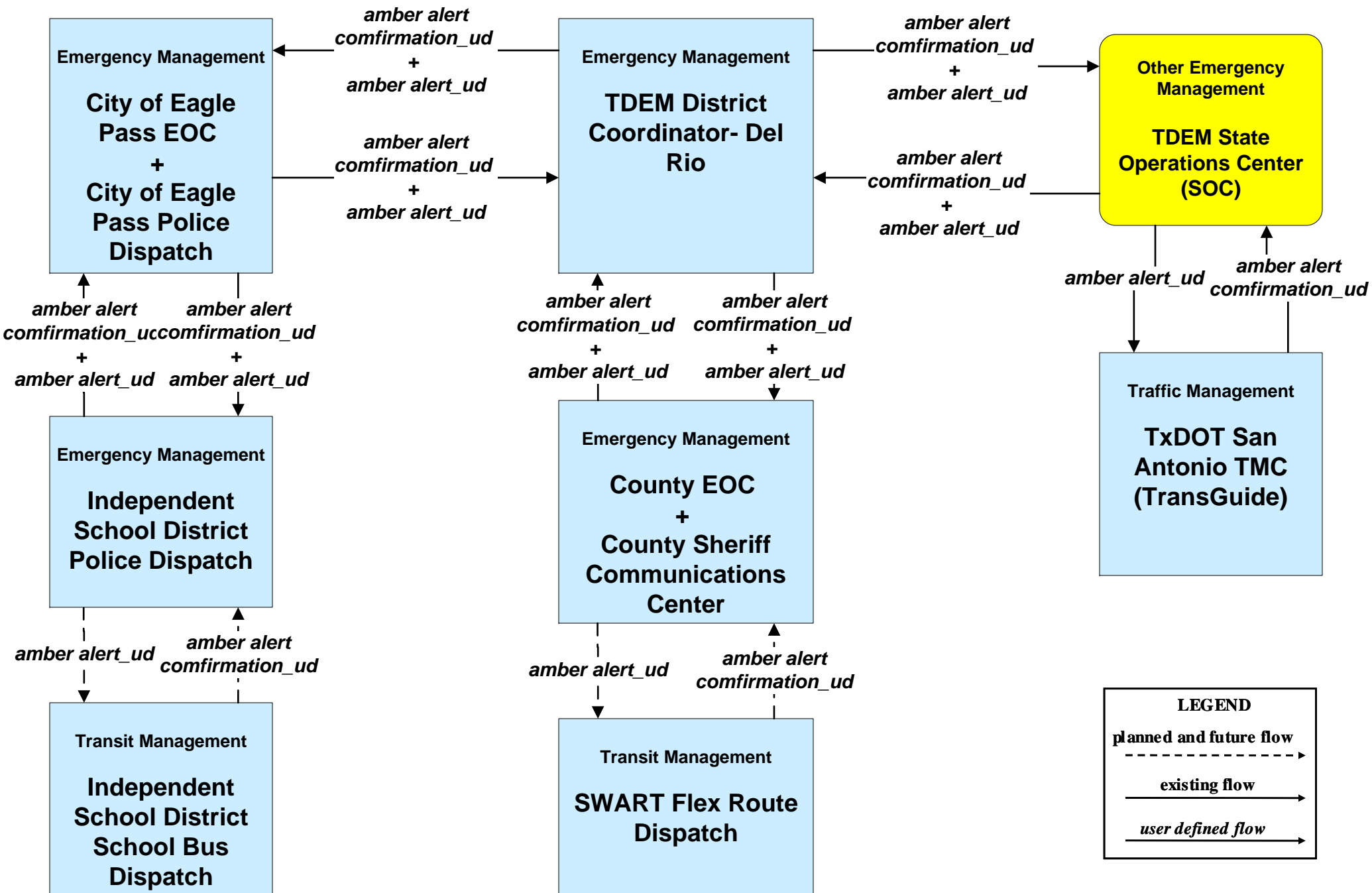
**EM06 - Wide-Area Alert  
County EOC (2 of 2)**



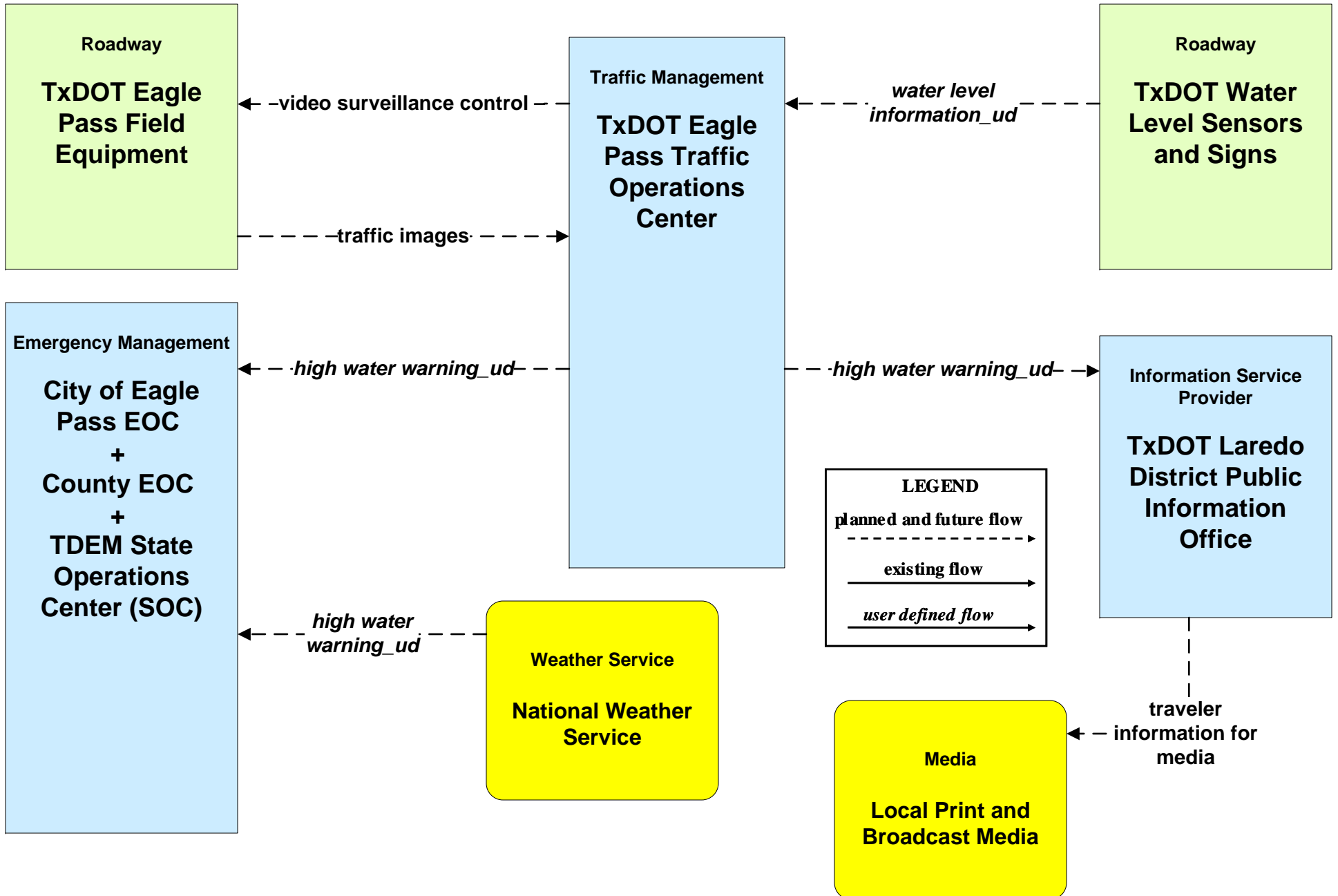
**EM06 - Wide-Area Alert  
TDEM SOC**



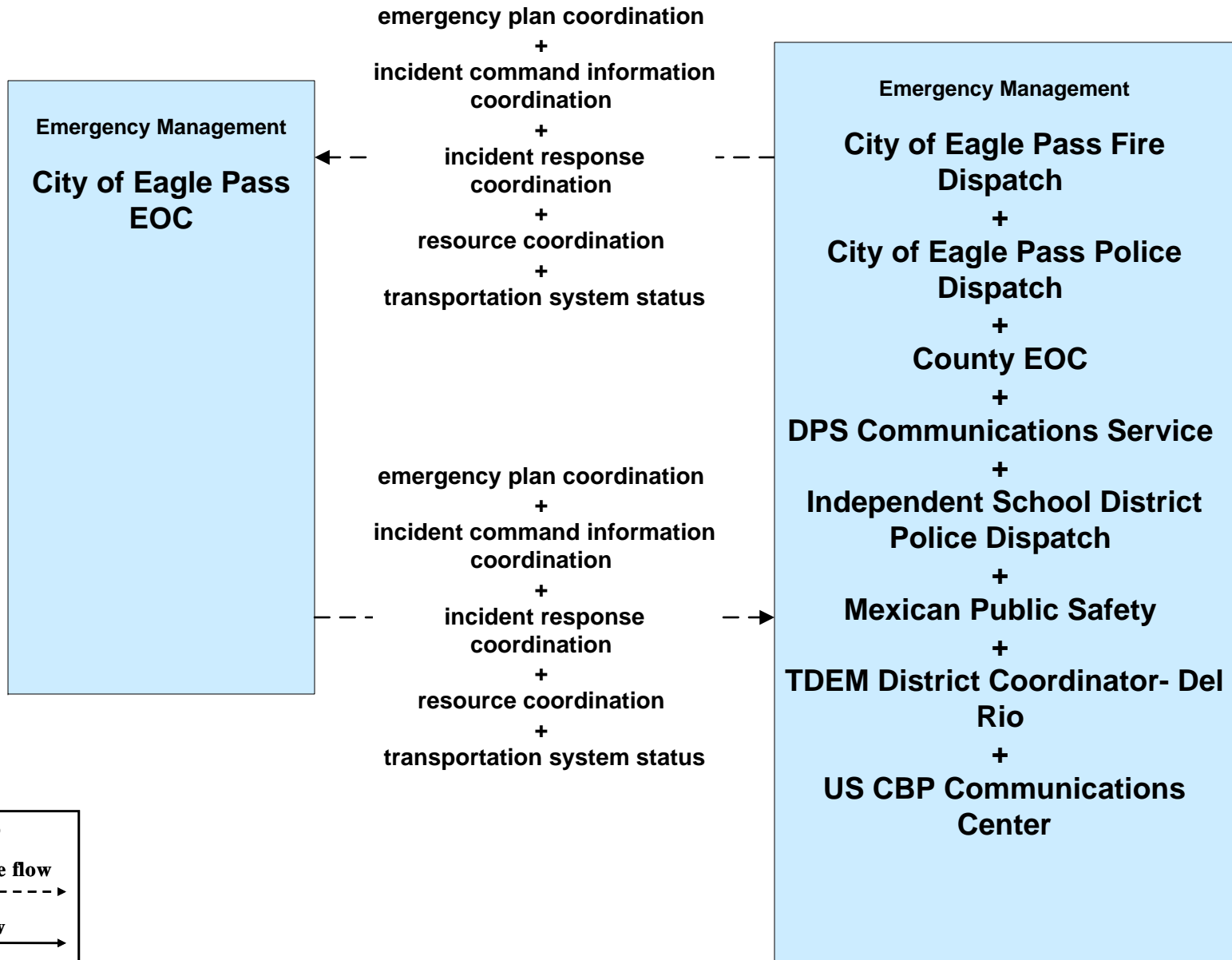
**EM06 - Wide-Area Alert  
Amber Alert (TDEM)**



**EM07 - Early Warning System  
TxDOT Flood Monitoring (1 of 2)**



**EM08 - Disaster Response and Recovery  
City of Eagle Pass EOC (2 of 2)**



**LEGEND**

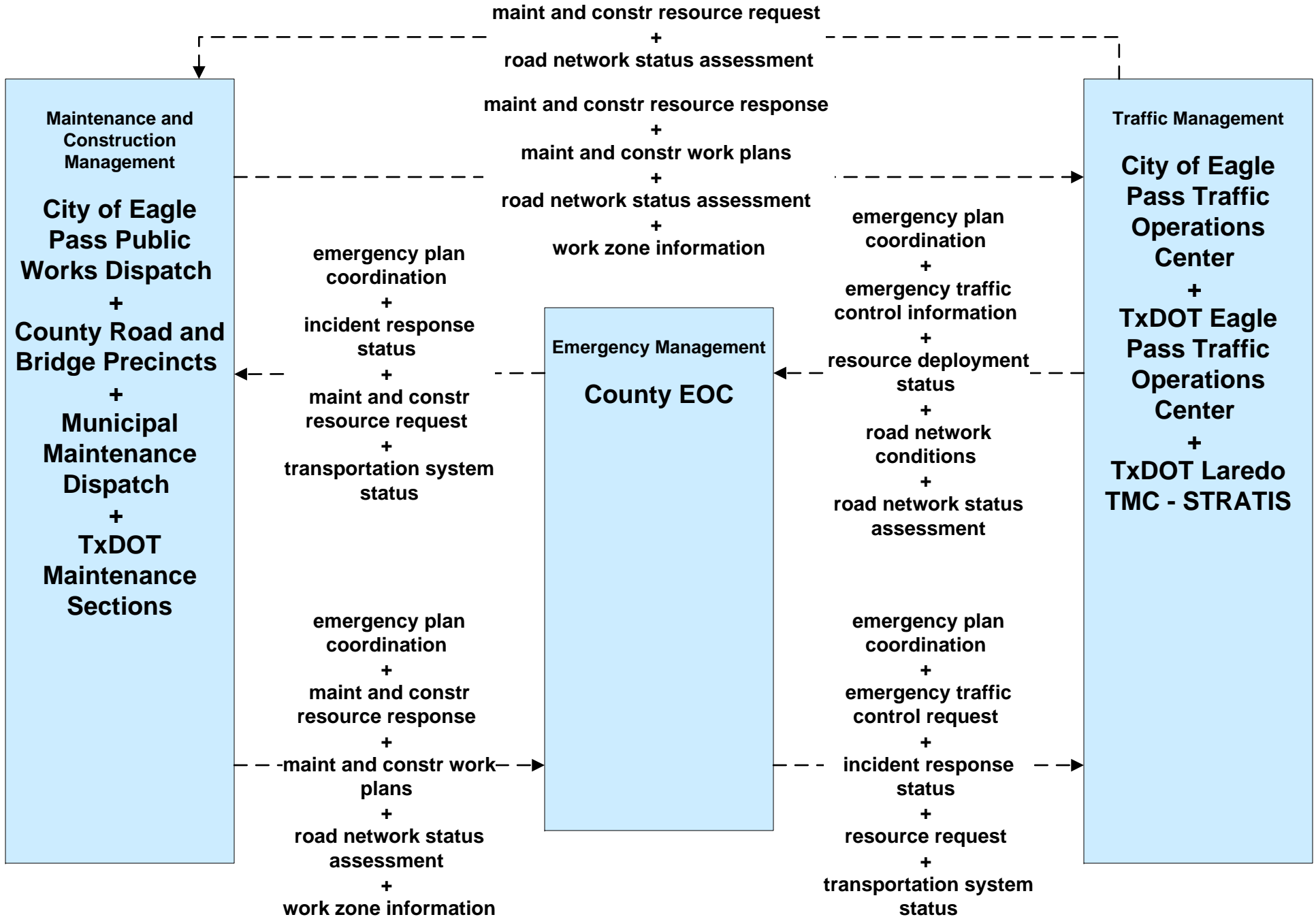
**planned and future flow**  
----->

**existing flow**  
—————>

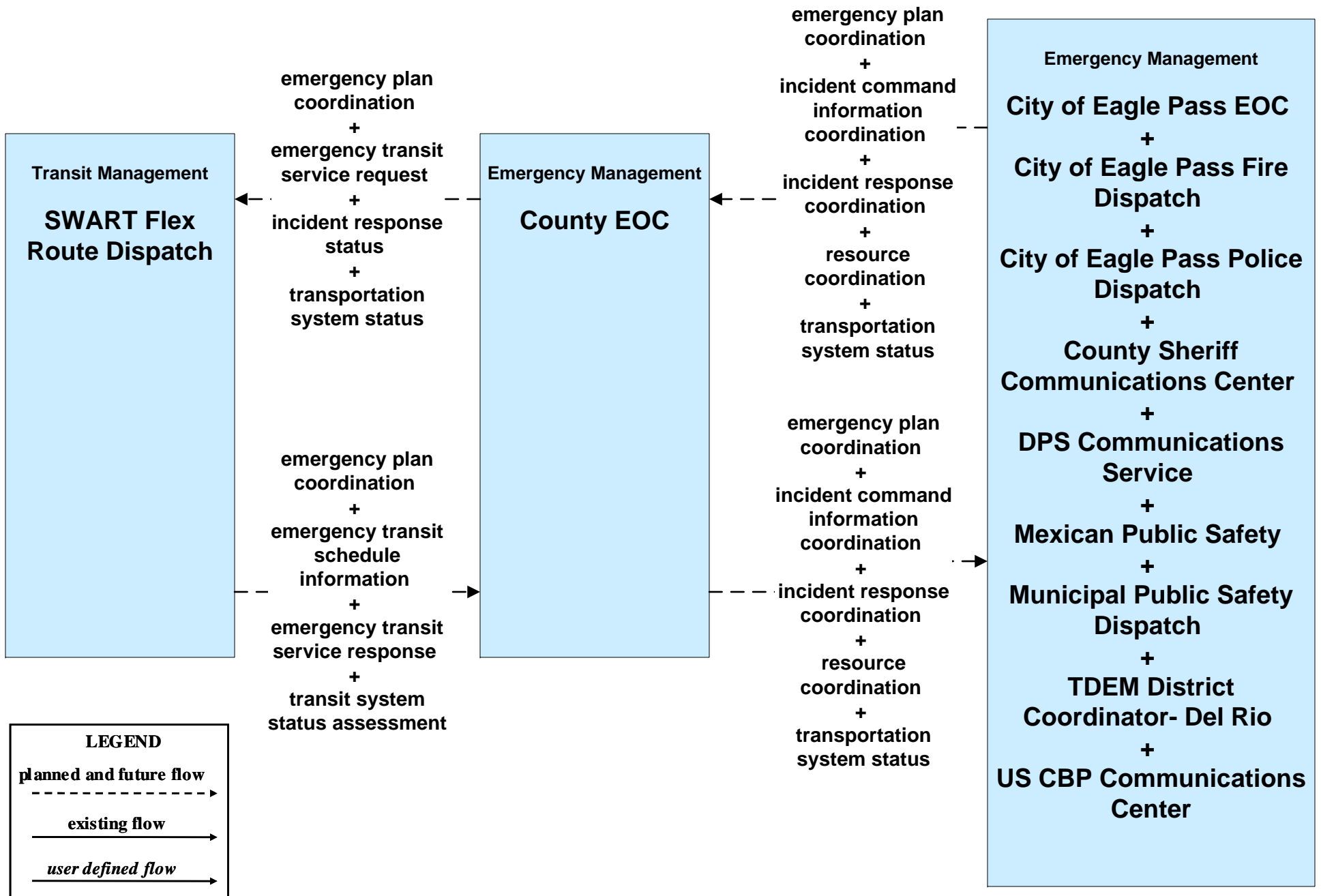
**user defined flow**  
—————>



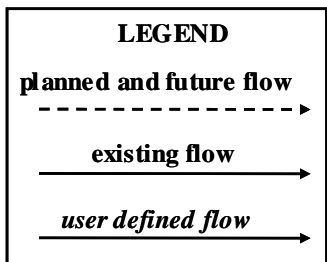
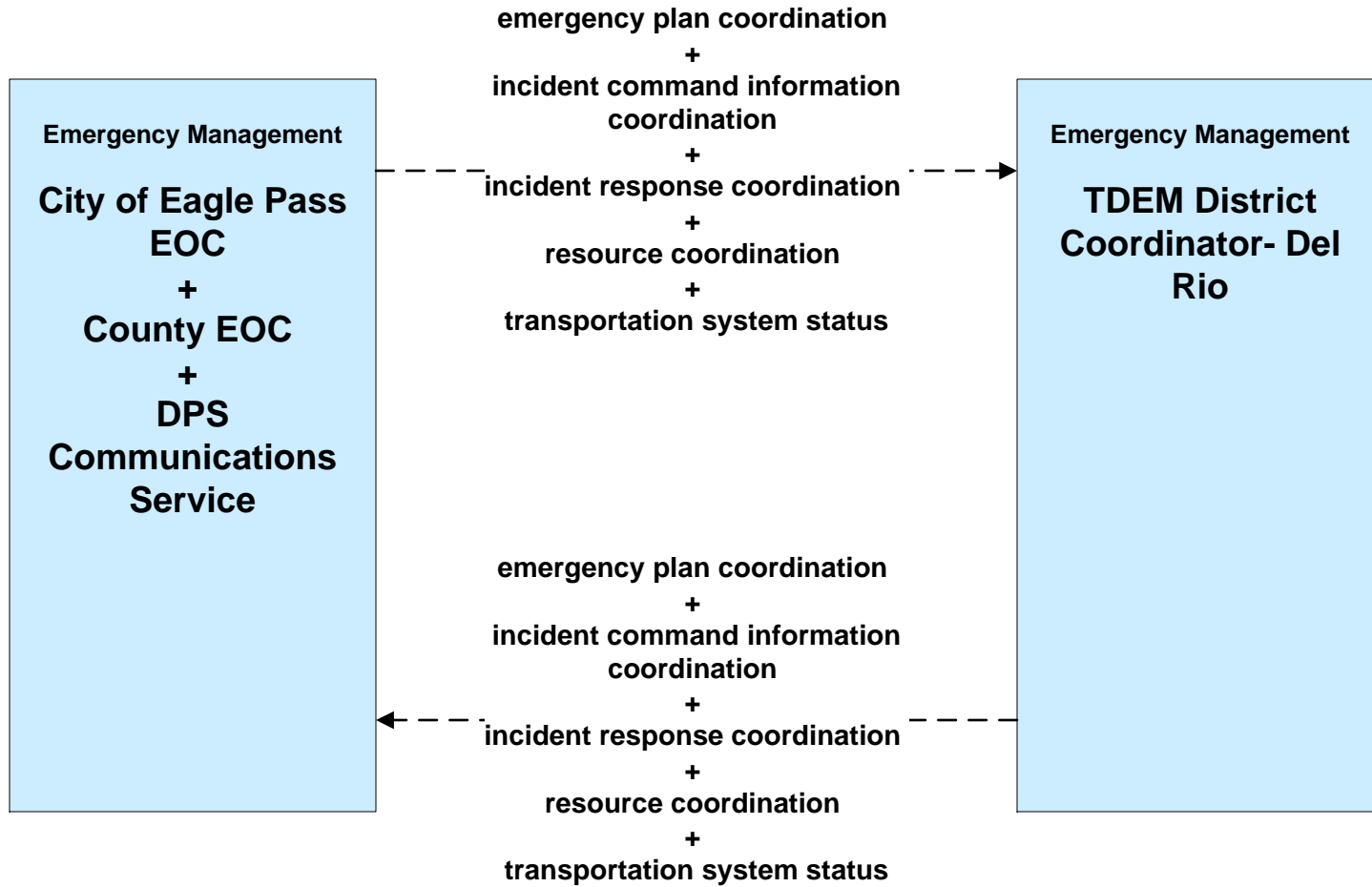
**EM08 - Disaster Response and Recovery  
County EOC (1 of 2)**



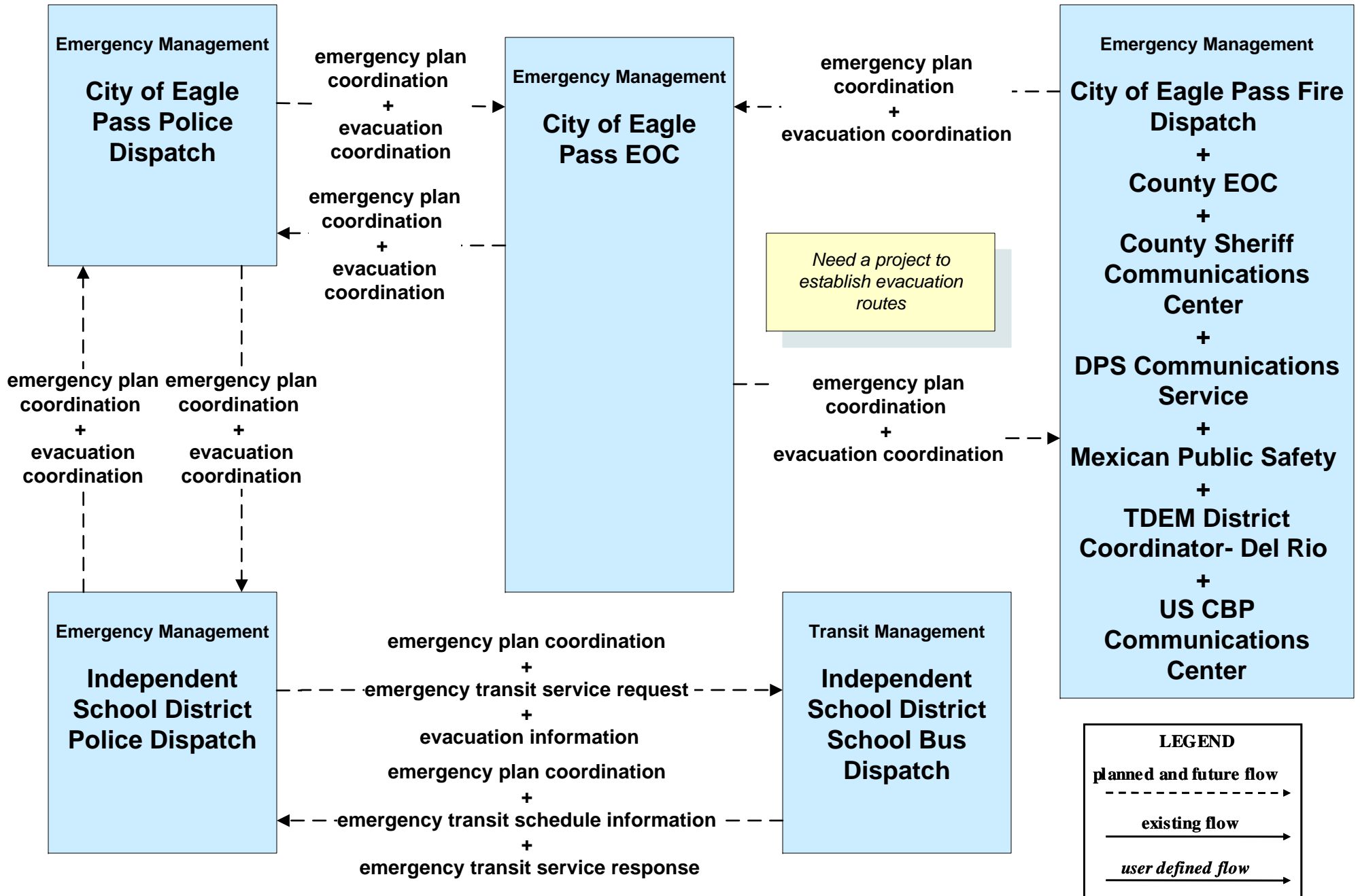
**EM08 - Disaster Response and Recovery  
County EOC (2 of 2)**



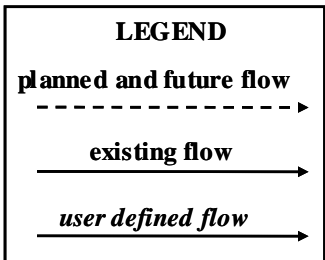
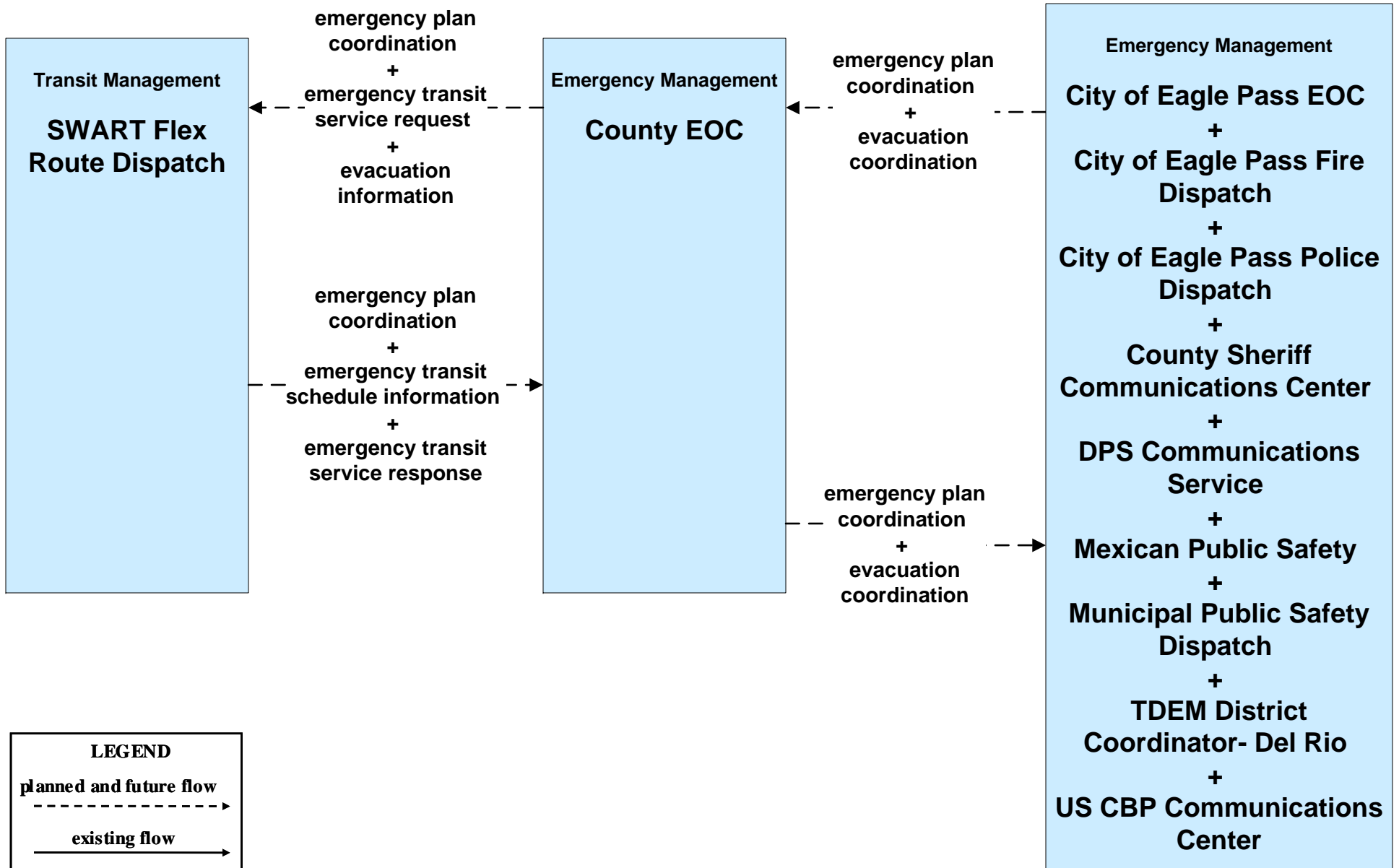
**EM08 - Disaster Response and Recovery**  
**TDEM District Coordinator - Del Rio**



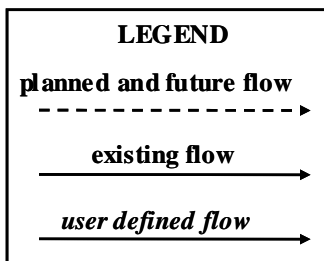
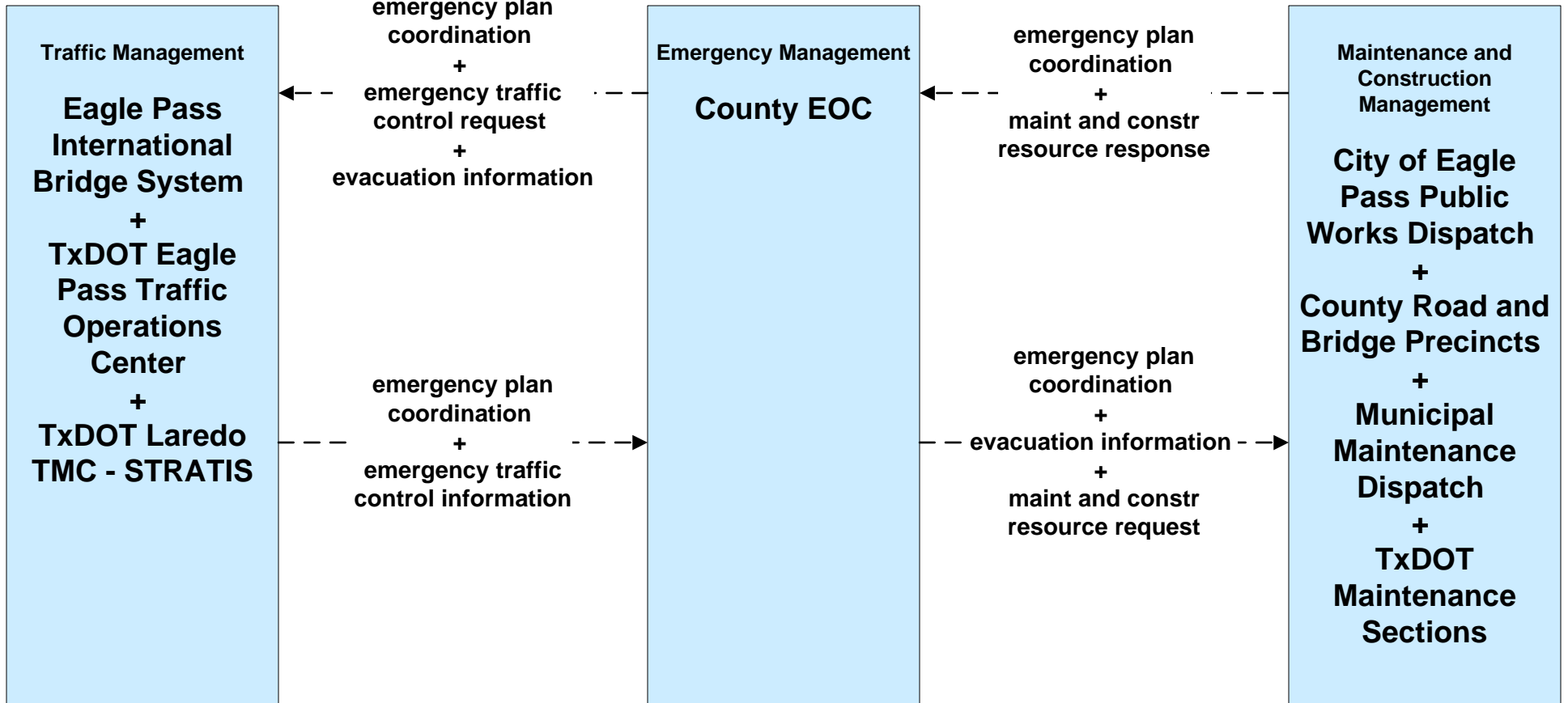
**EM09 - Evacuation and Reentry Management  
City of Eagle Pass EOC (1 of 2)**



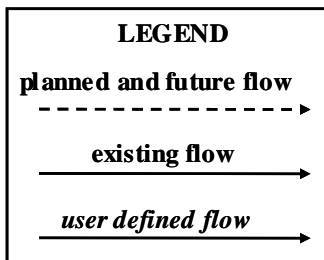
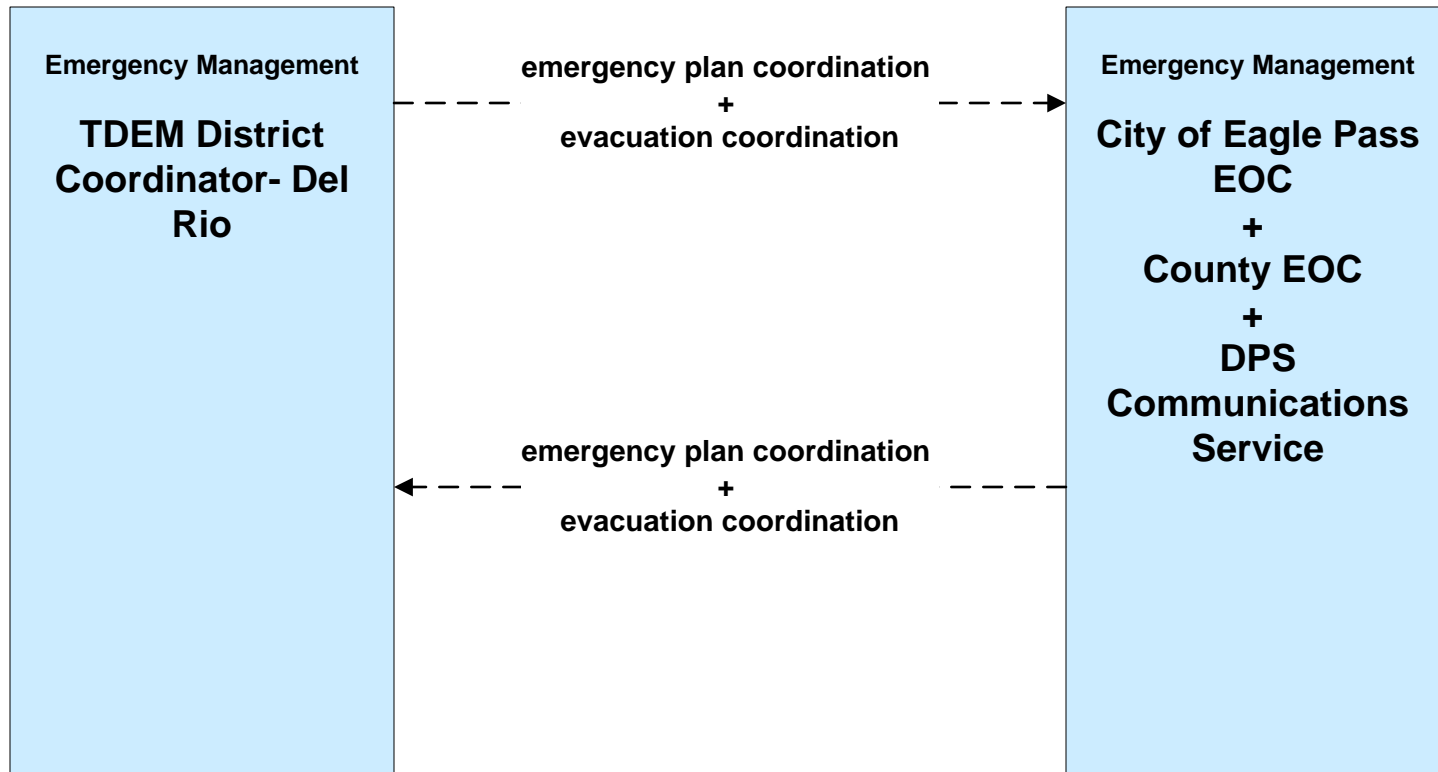
**EM09 - Evacuation and Reentry Management  
County EOC (1 of 2)**



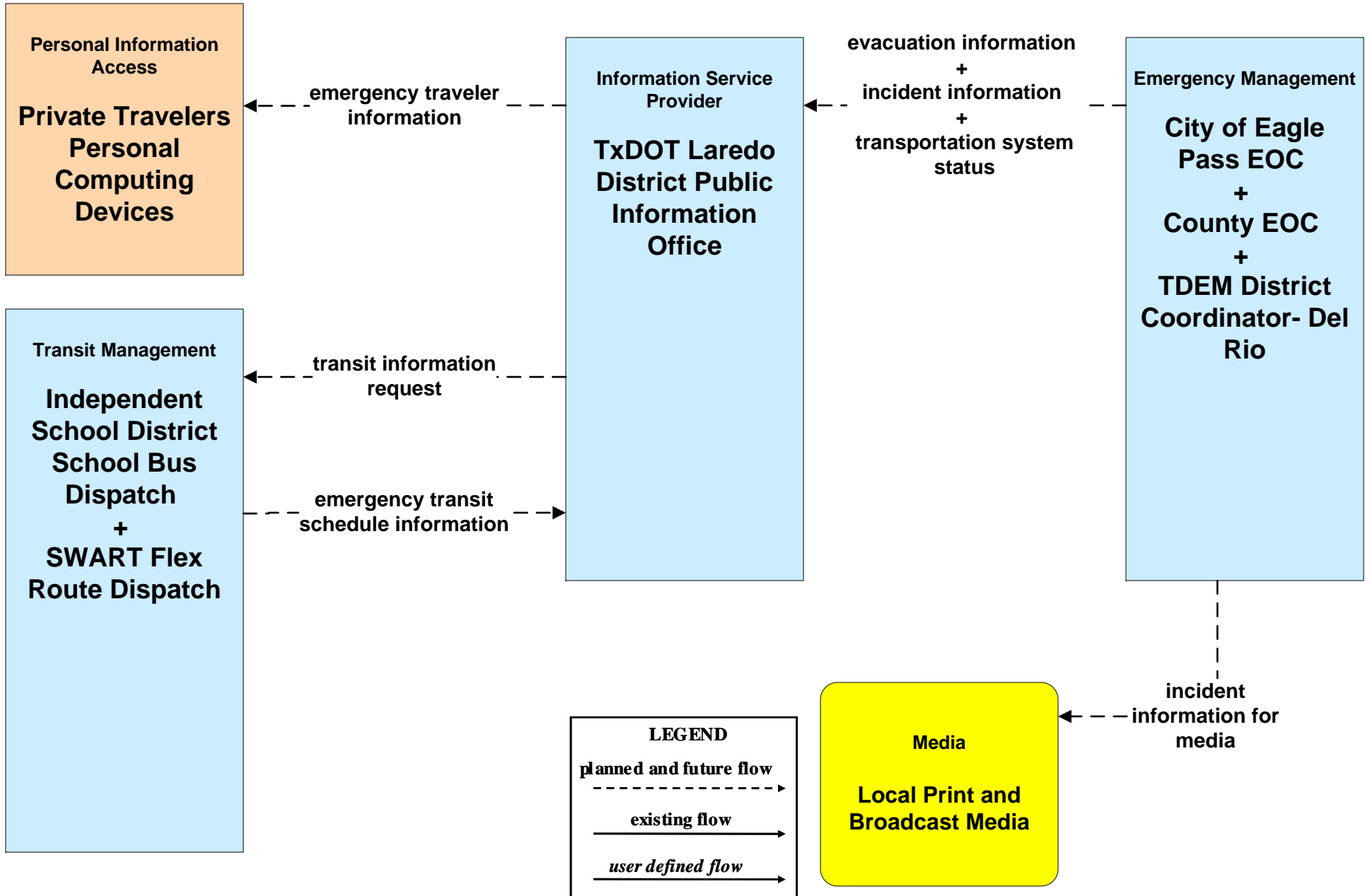
**EM09 - Evacuation and Reentry Management  
County EOC (2 of 2)**



**EM09 - Evacuation and Reentry Management  
TDEM District Coordinator - Del Rio**



**EM10 - Disaster Traveler Information  
TxDOT**





# EM10 - Disaster Traveler Information City of Eagle Pass

