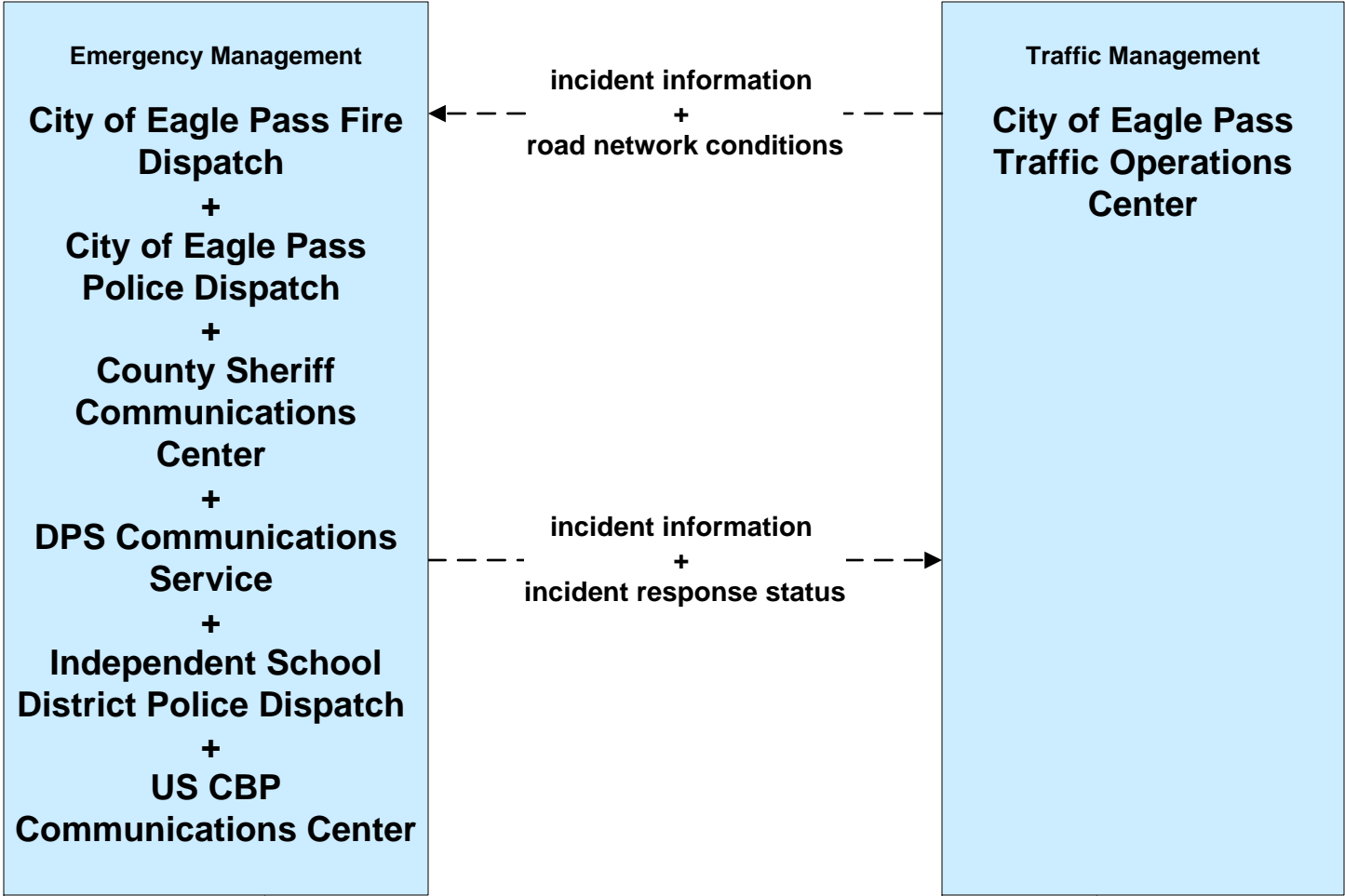


**ATMS08 – Traffic Incident Management System
EM to TM - City of Eagle Pass**



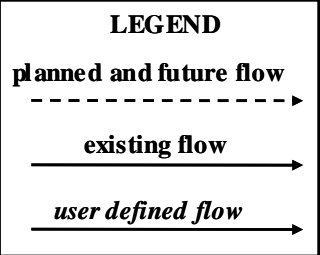
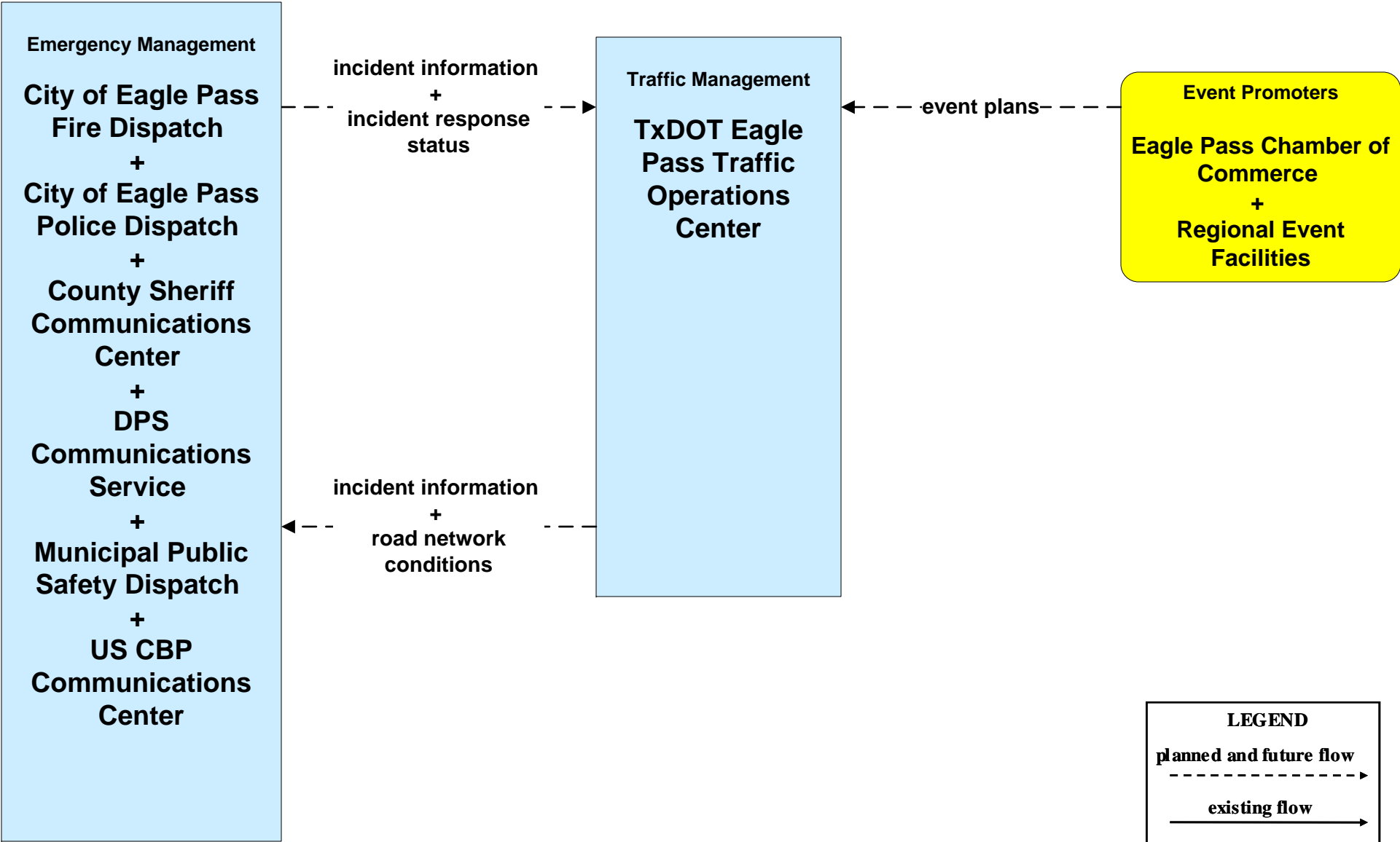
Event Promoters
Eagle Pass Chamber of Commerce
+
Regional Event Facilities



LEGEND

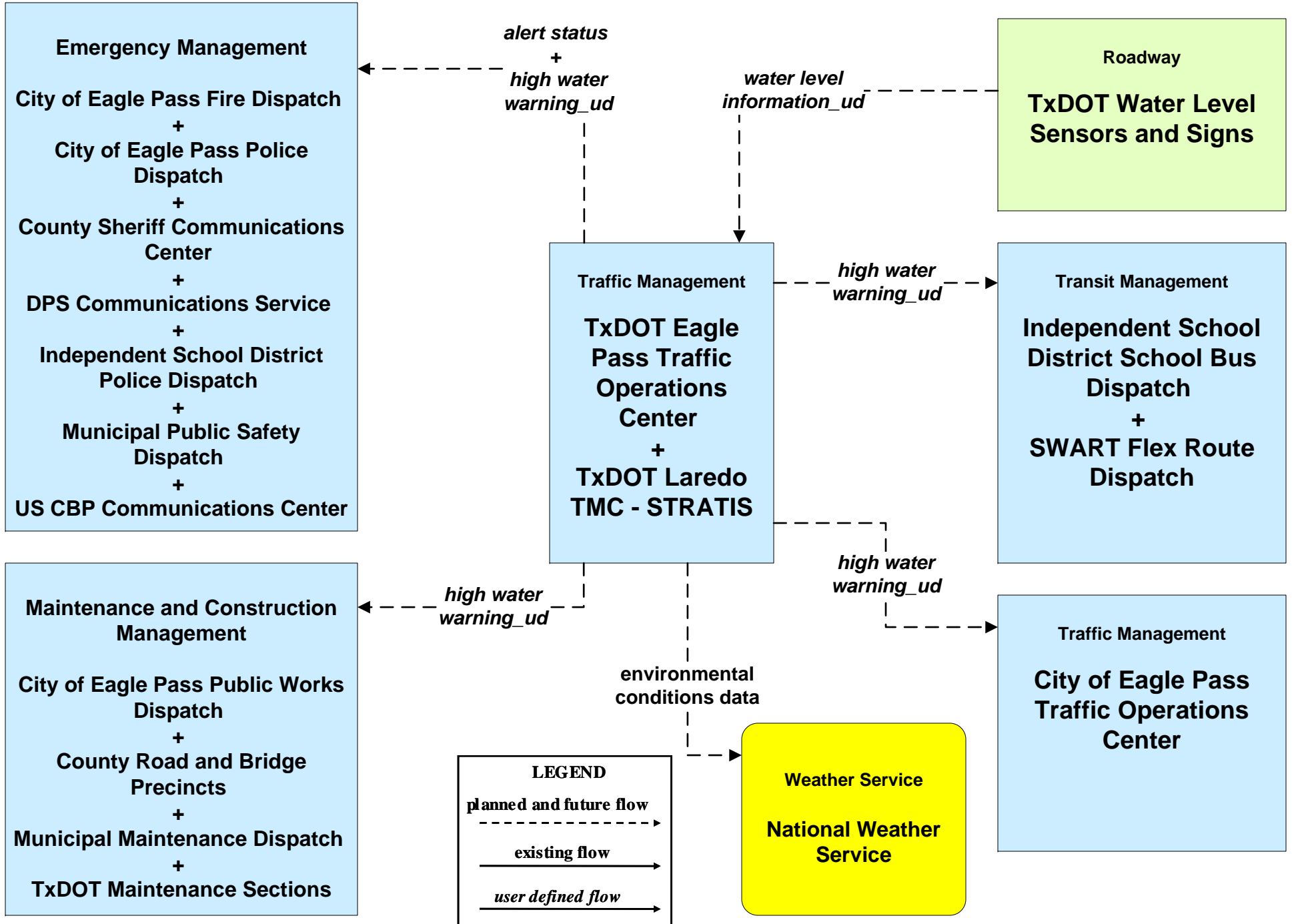
- planned and future flow → (dashed line)
- existing flow → (solid line)
- user defined flow → (solid line)

**ATMS08 - Traffic Incident Management System
EM to TM - TxDOT Eagle Pass**

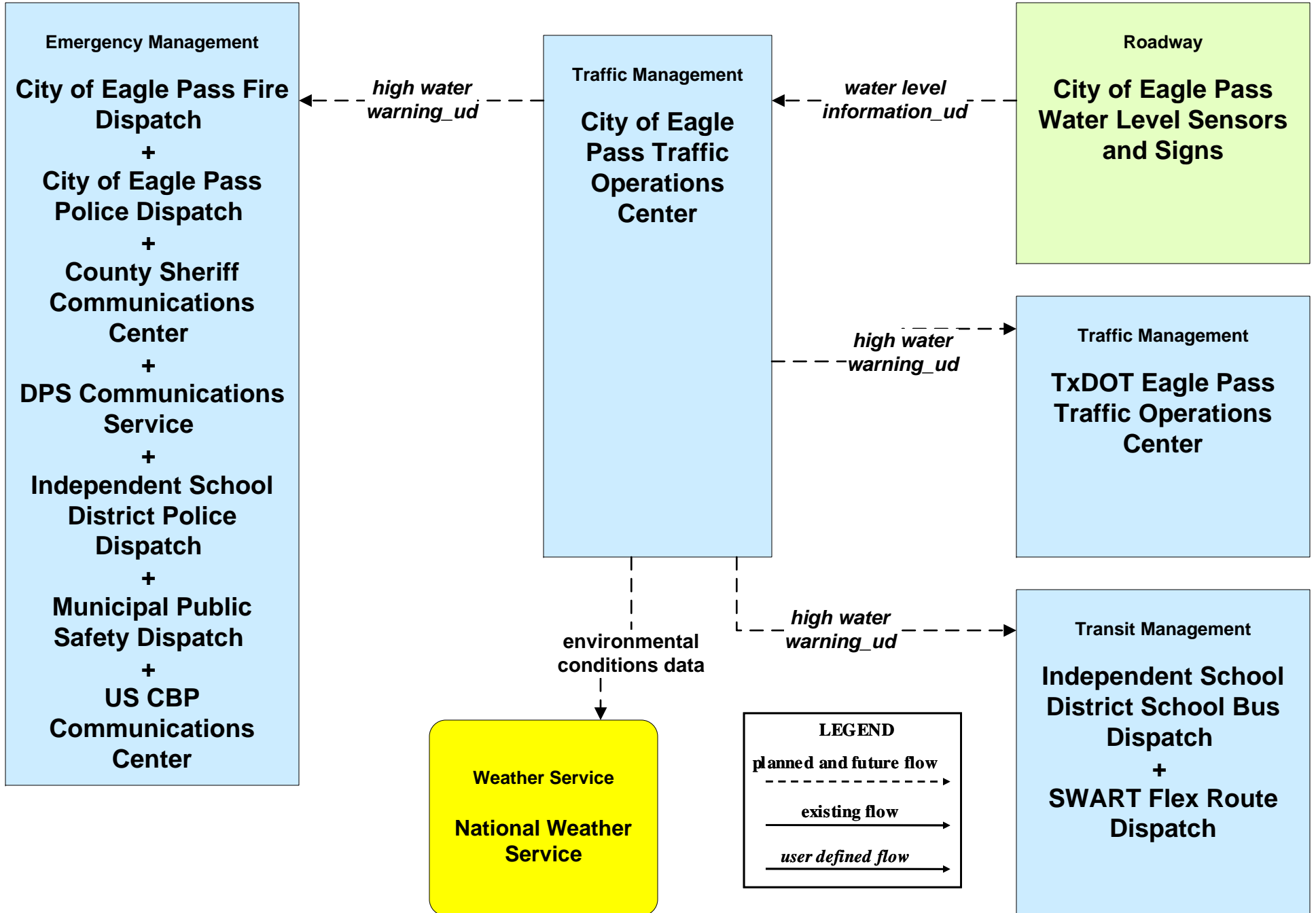


ATMS08 – Traffic Incident Management System

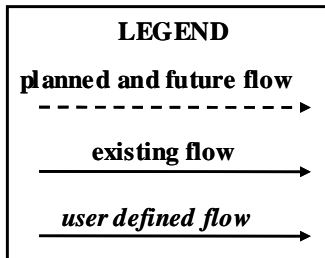
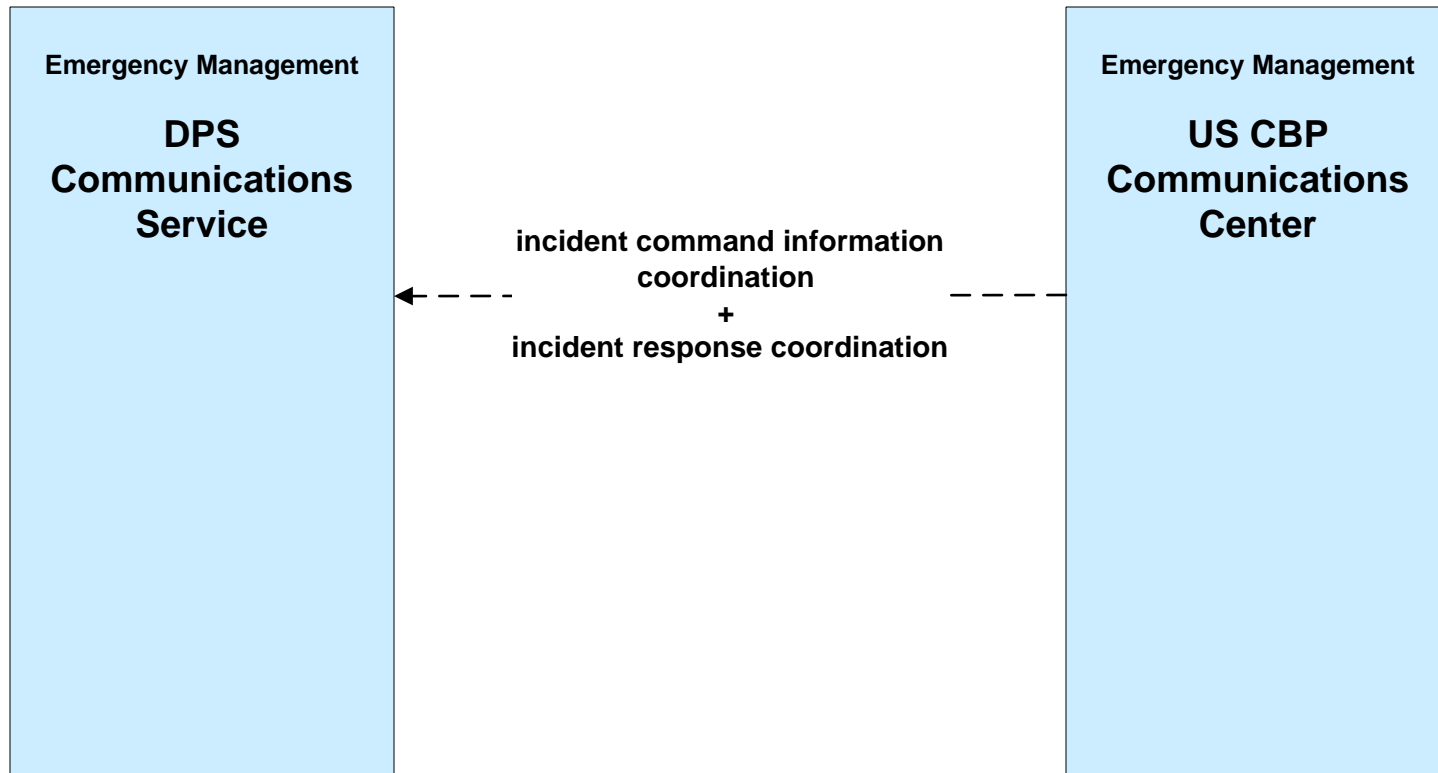
Flood Warning - TxDOT Eagle Pass



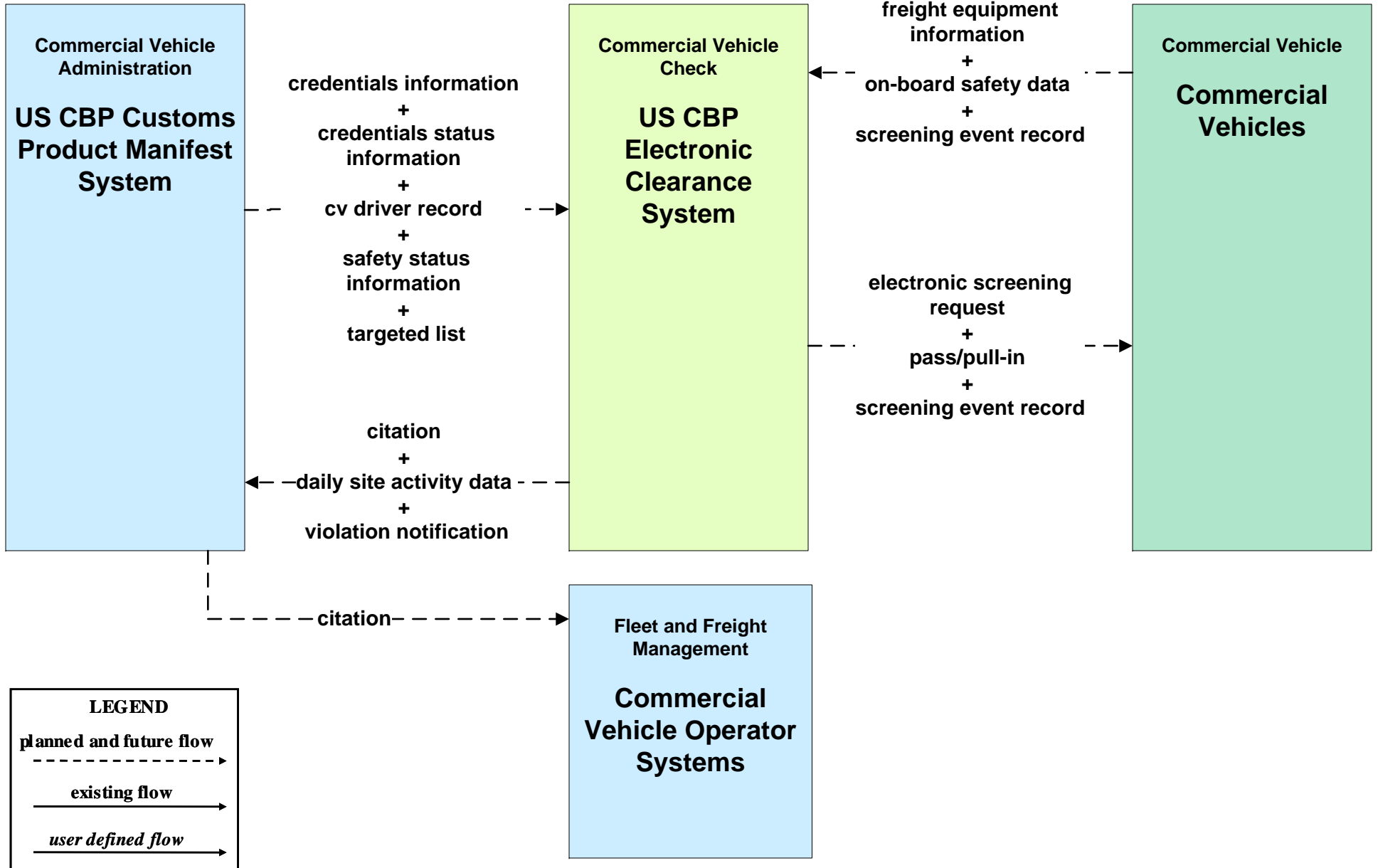
**ATMS08 – Traffic Incident Management System
Flood Warning - City of Eagle Pass**



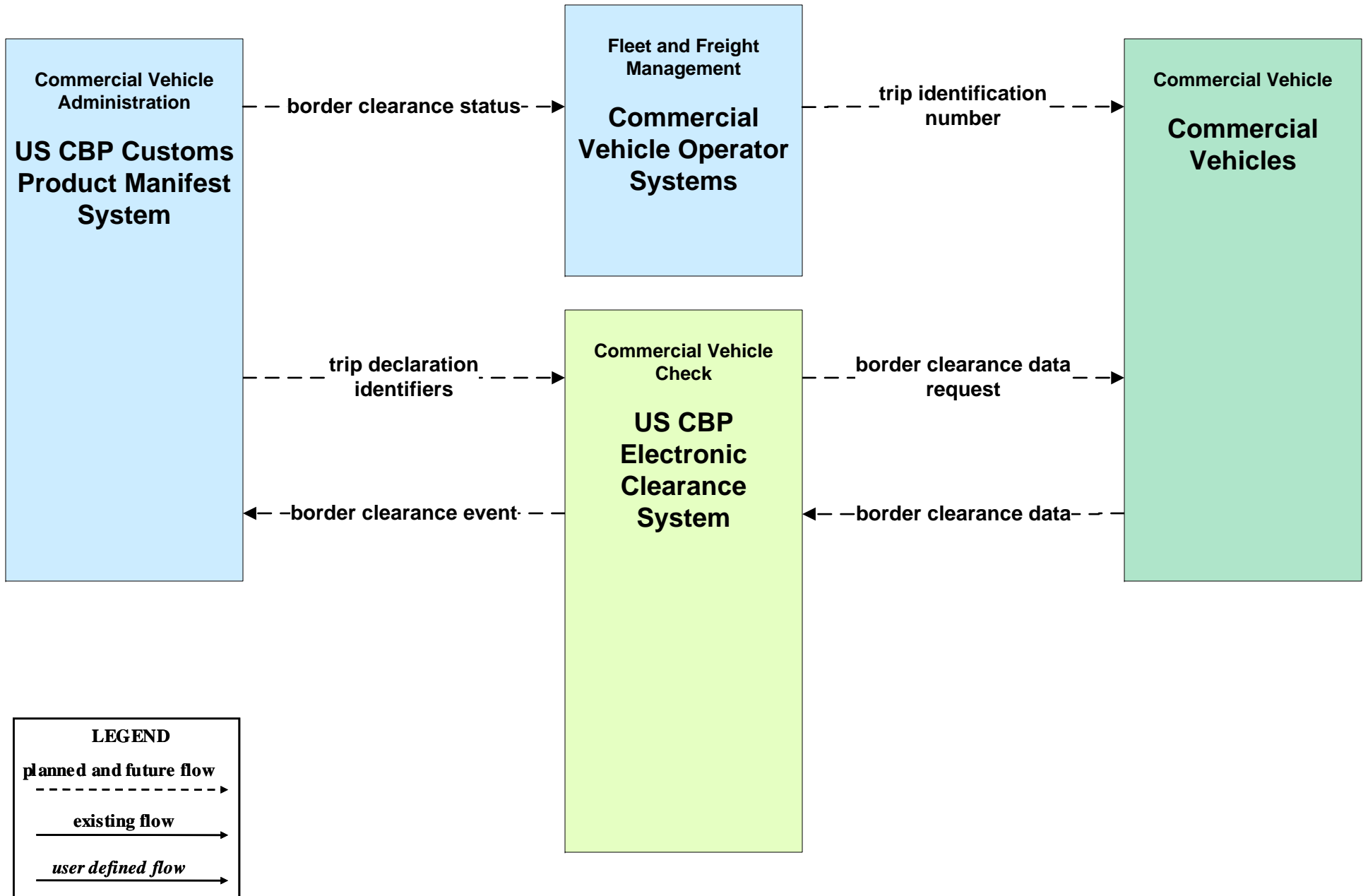
**ATMS08 – Traffic Incident Management System
US CBP**



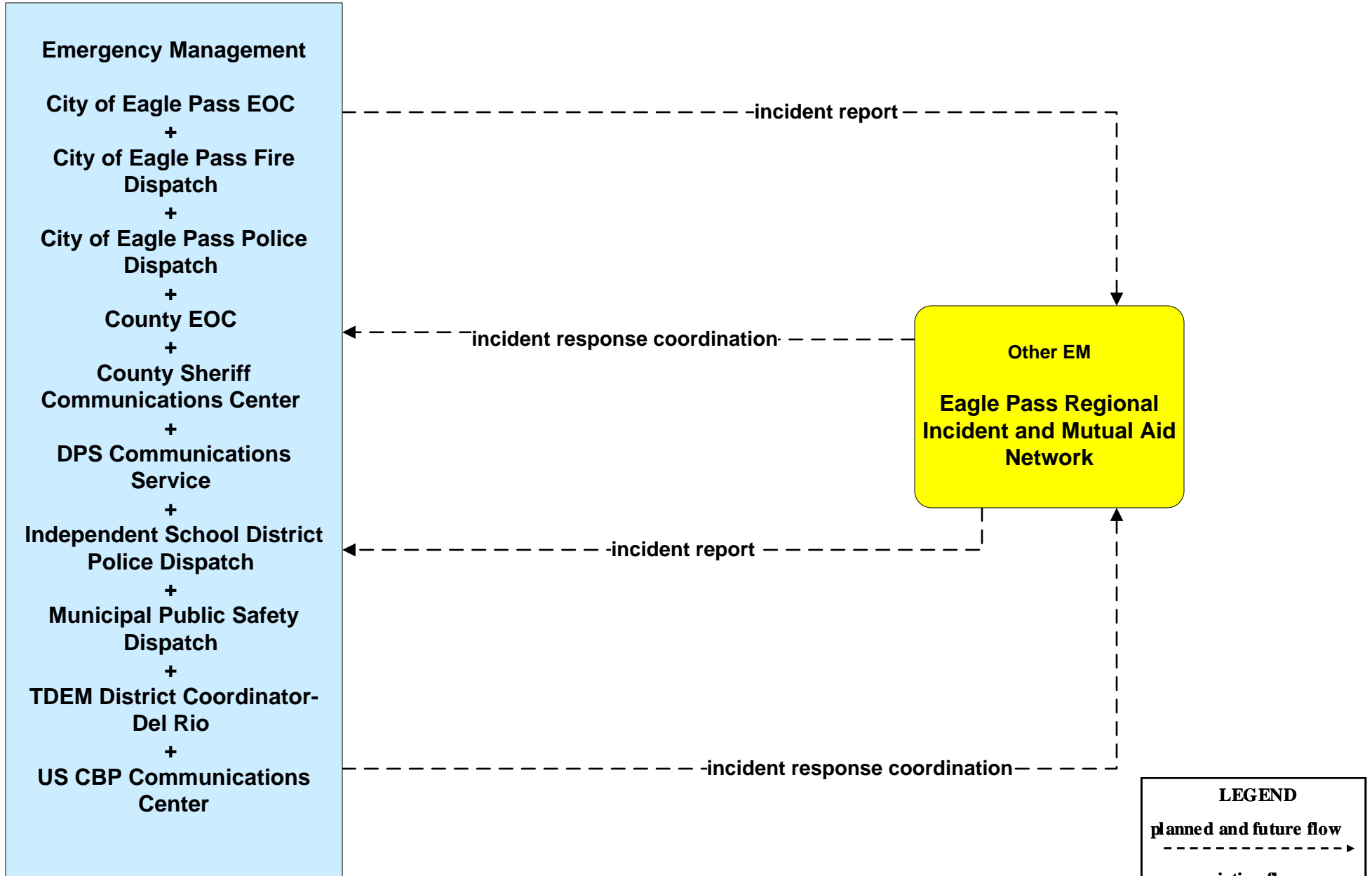
**CVO03 - Electronic Clearance
US CBP**



**CVO05 - International Electronic Border Clearance
US CBP**



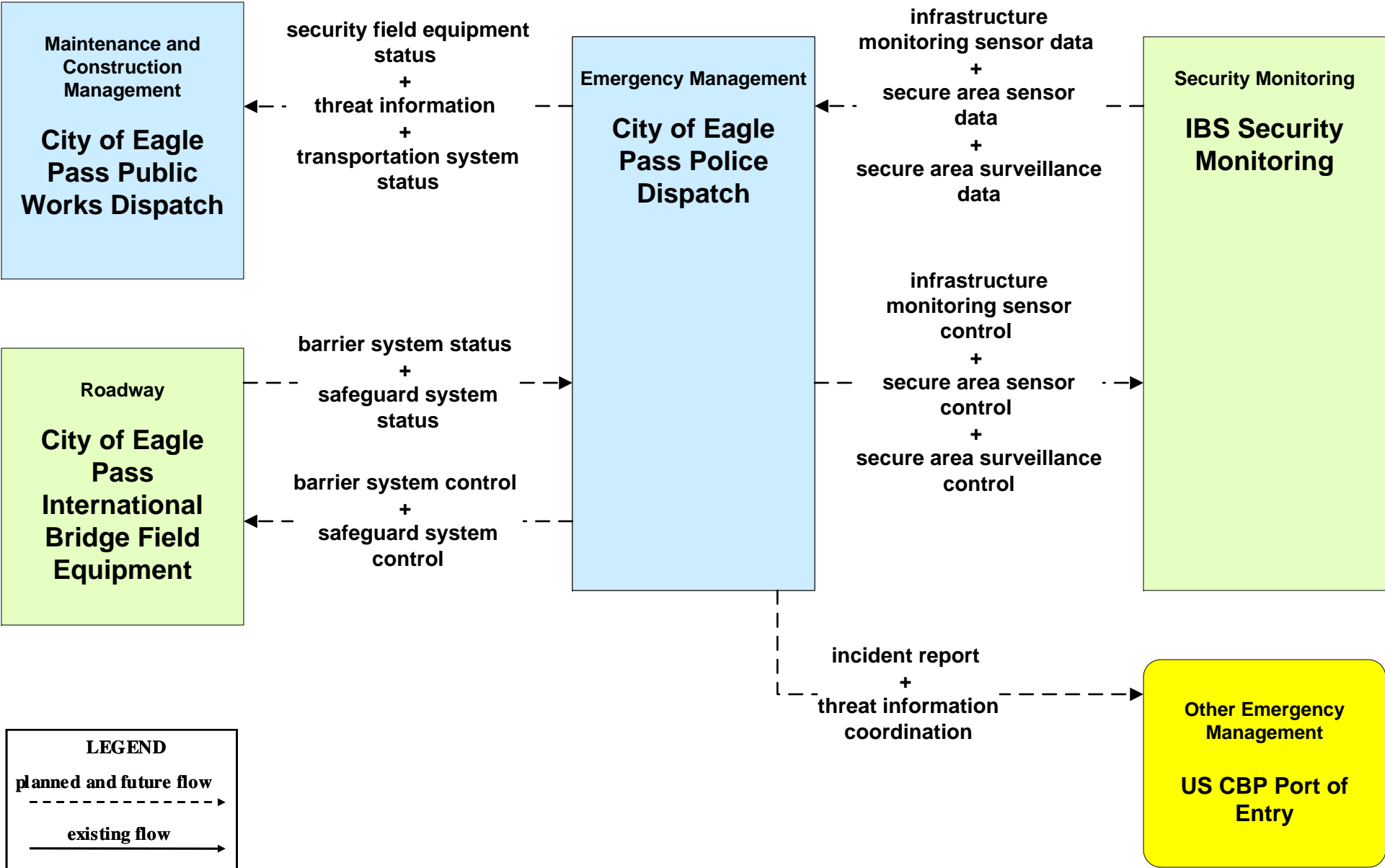
**EM01 - Emergency Call-Taking and Dispatch
Eagle Pass Regional Incident and Mutual Aid Network**



LEGEND

- planned and future flow (dashed line with arrow)
- existing flow (solid line with arrow)
- user defined flow (solid line with wavy underline and arrow)

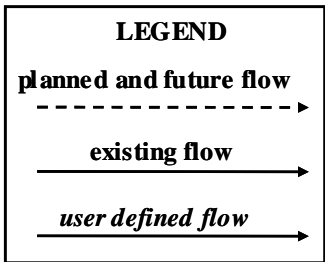
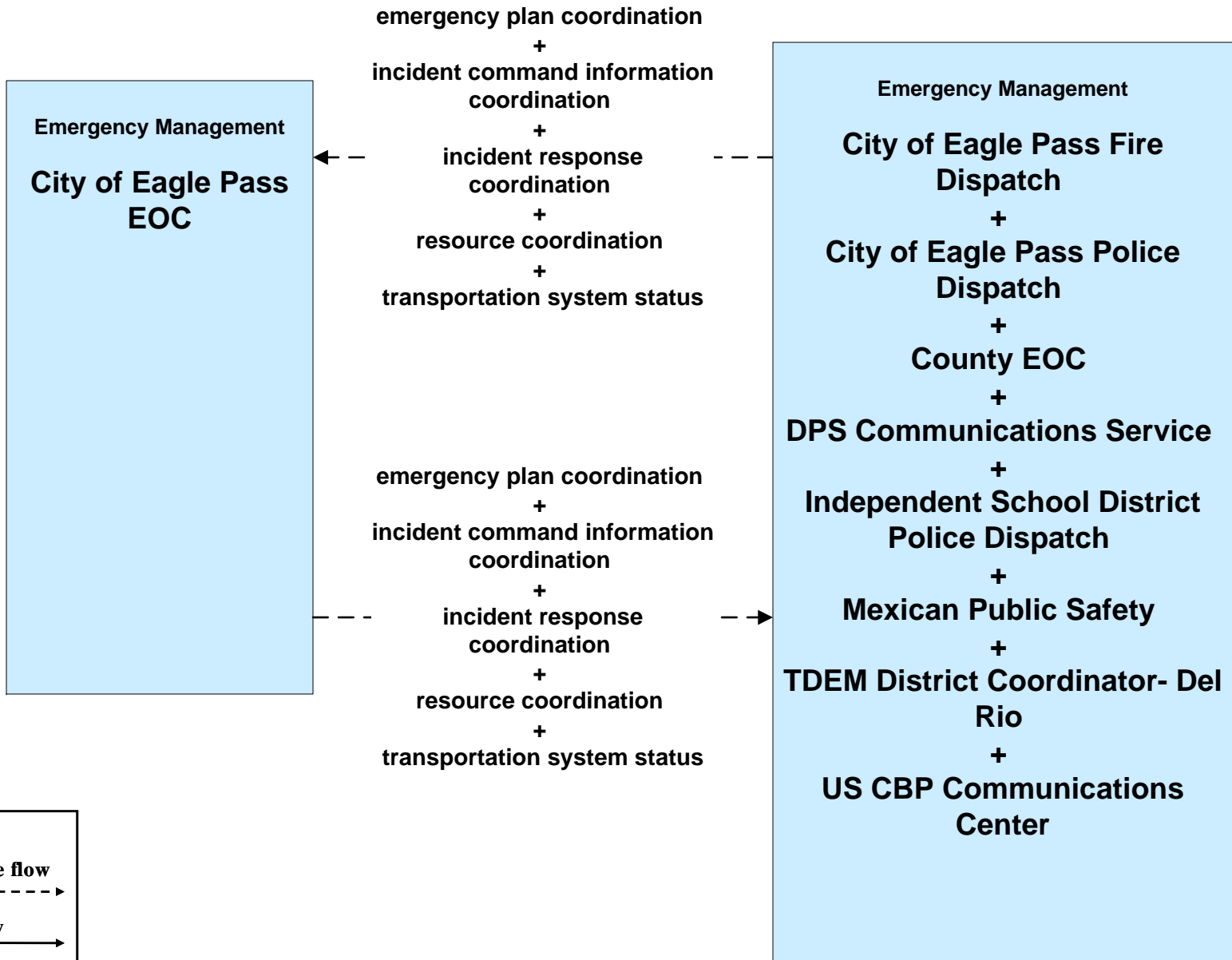
EM05 - Transportation Infrastructure Protection International Bridges



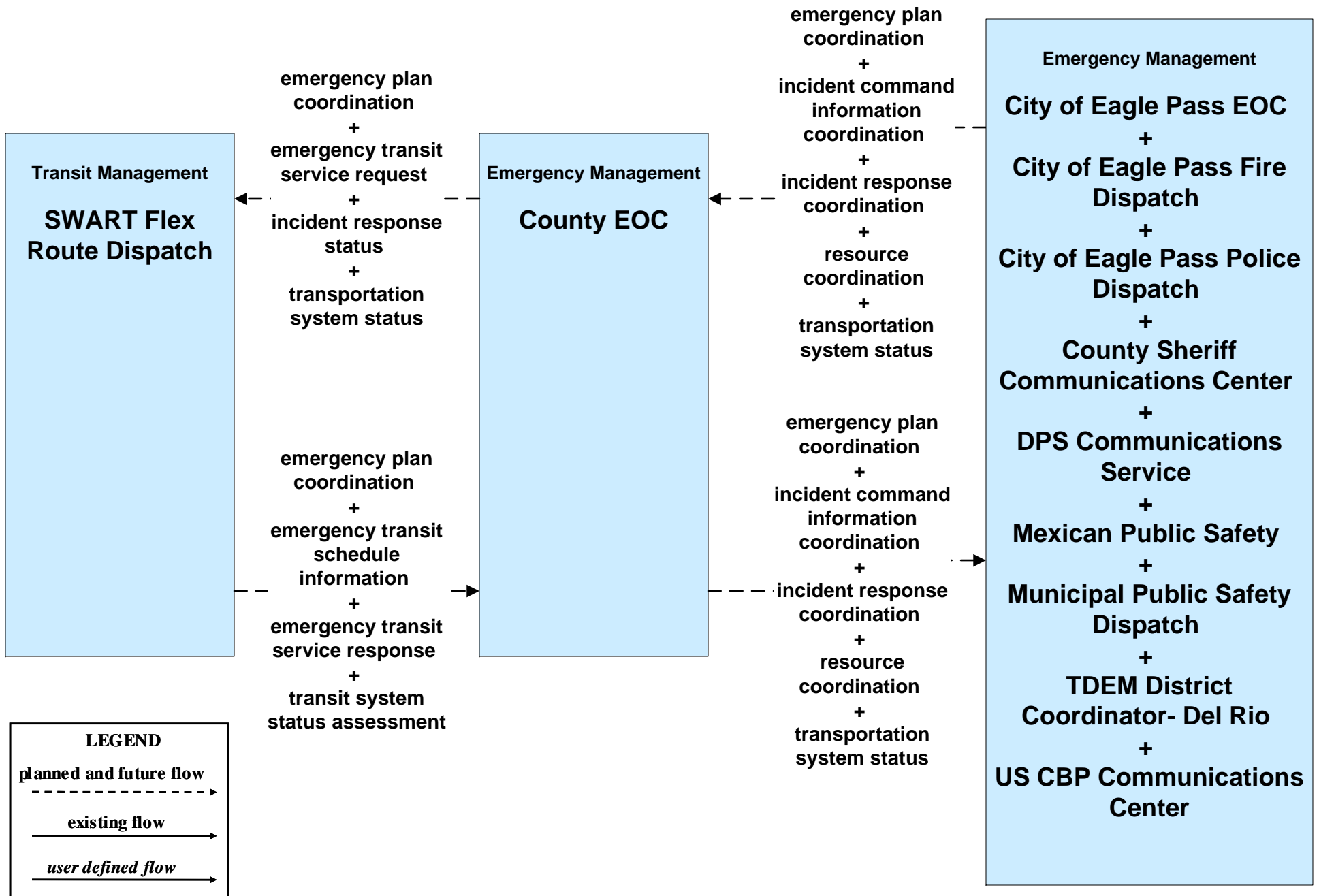
LEGEND

- planned and future flow* → (dashed line)
- existing flow* → (solid line)
- user defined flow* → (solid line)

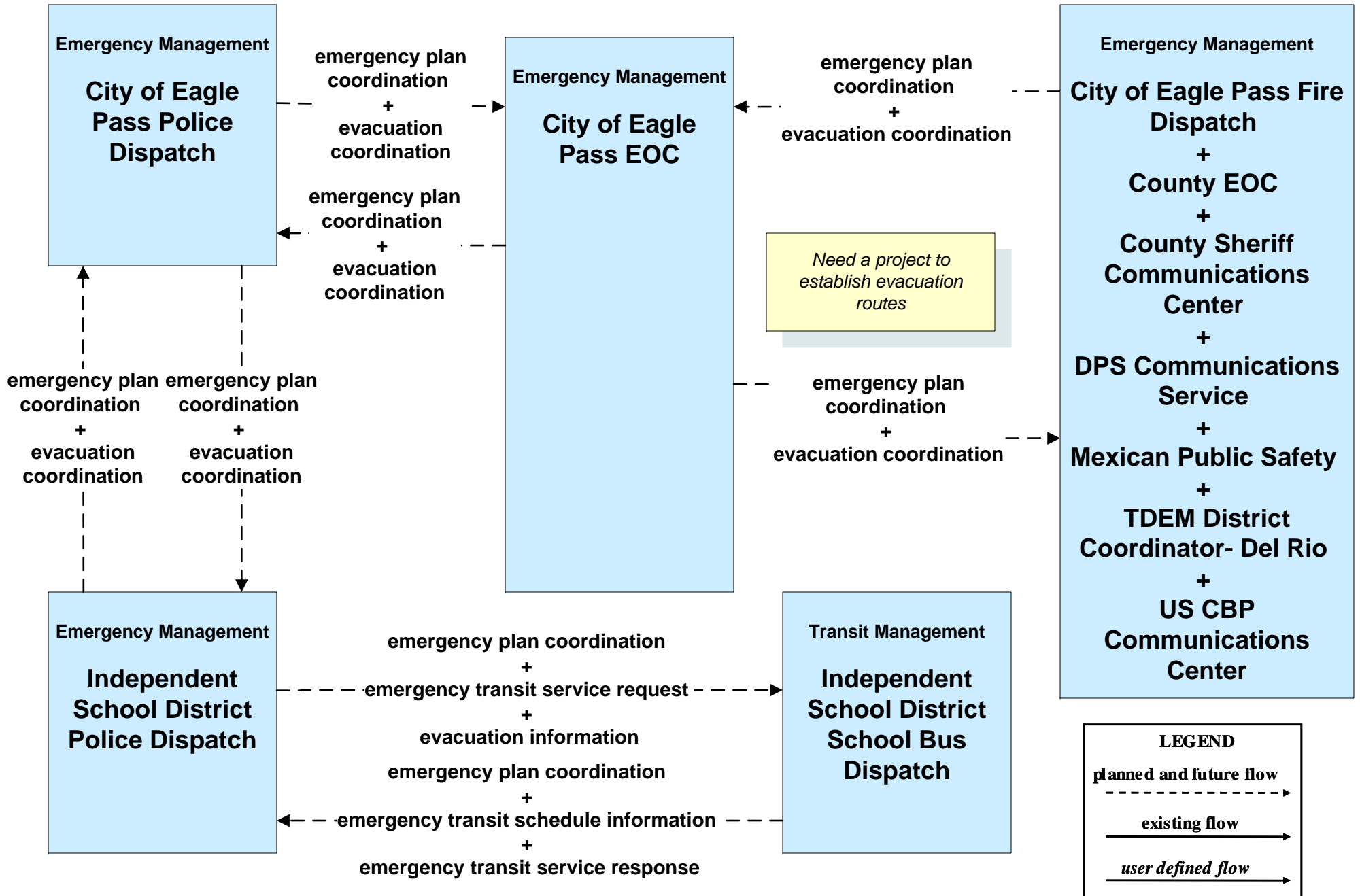
**EM08 - Disaster Response and Recovery
City of Eagle Pass EOC (2 of 2)**



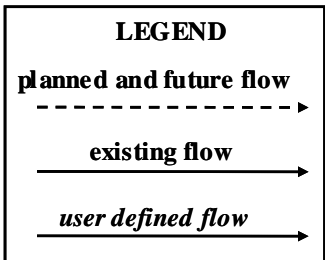
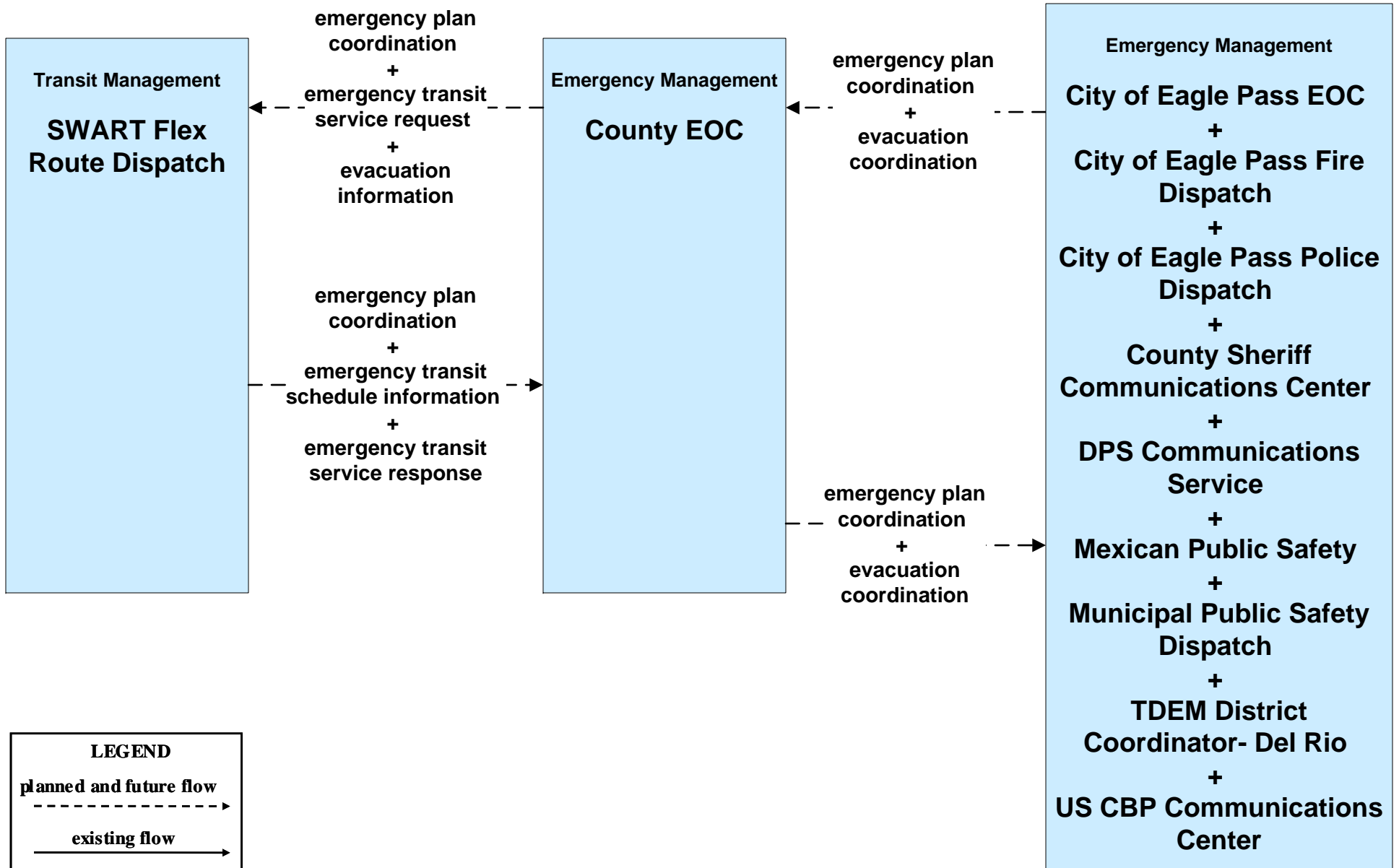
**EM08 - Disaster Response and Recovery
County EOC (2 of 2)**



**EM09 - Evacuation and Reentry Management
City of Eagle Pass EOC (1 of 2)**



**EM09 - Evacuation and Reentry Management
County EOC (1 of 2)**



**MC04 - Weather Information Processing and Distribution
TxDOT Eagle Pass (2 of 2)**

