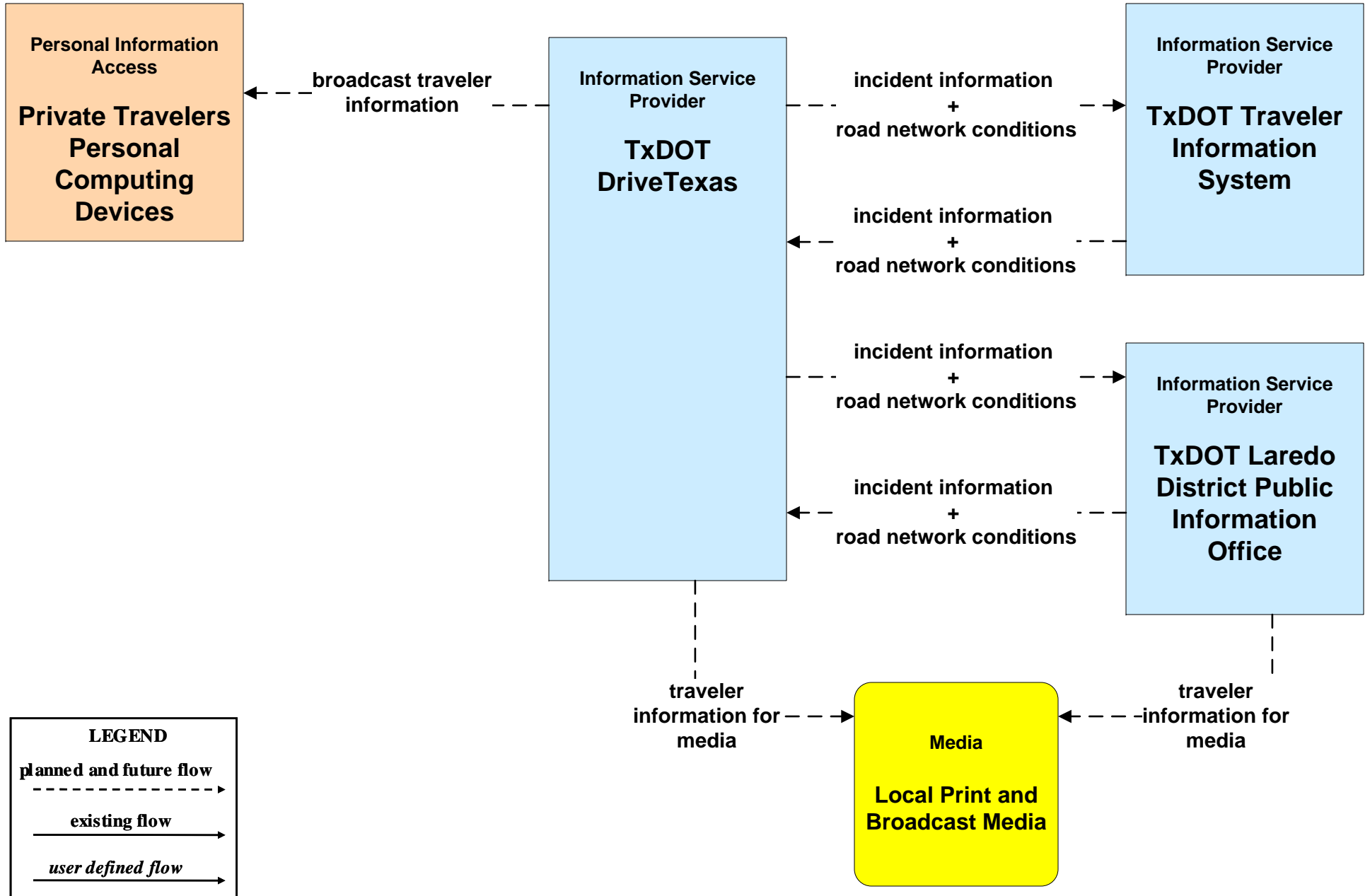
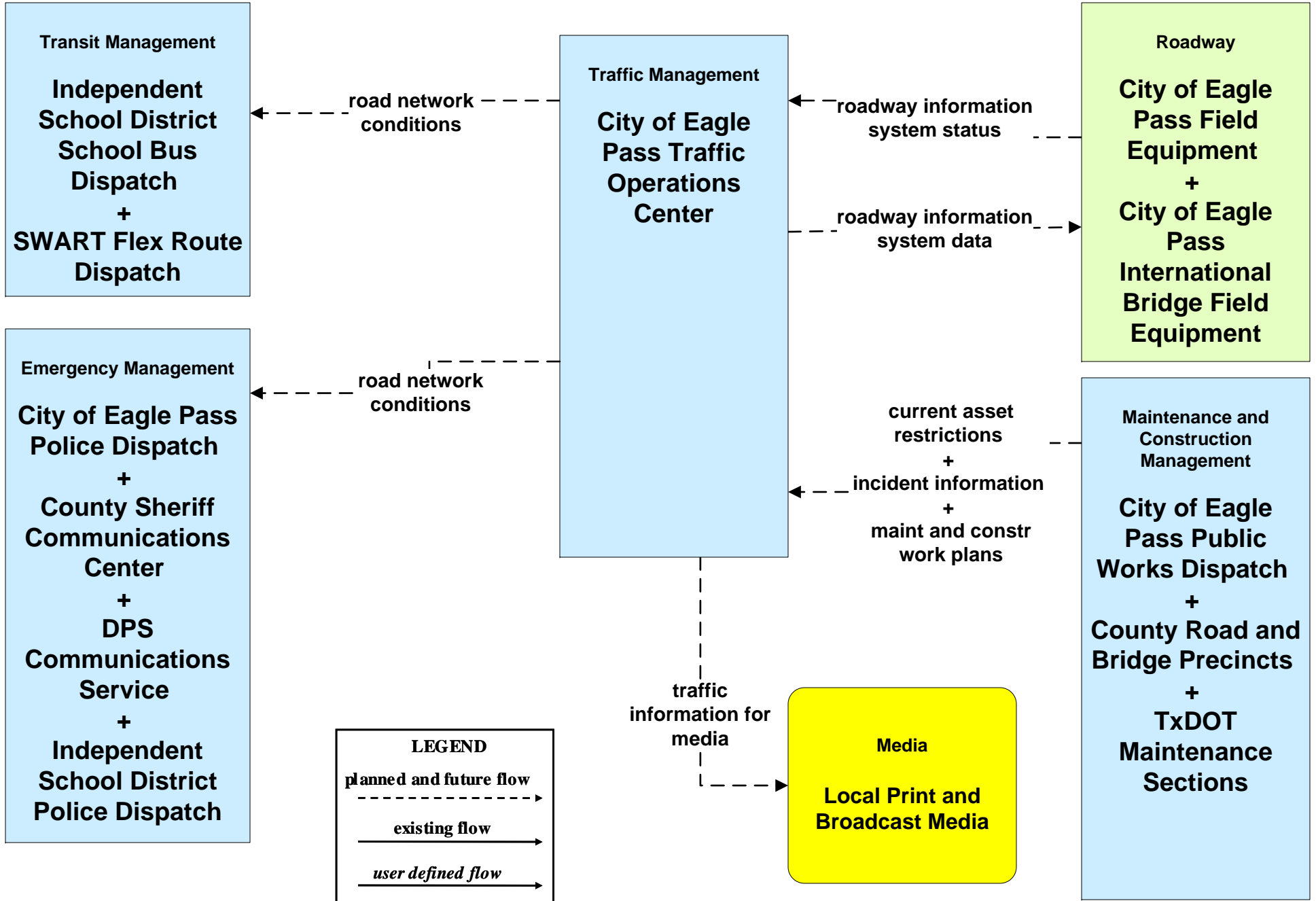


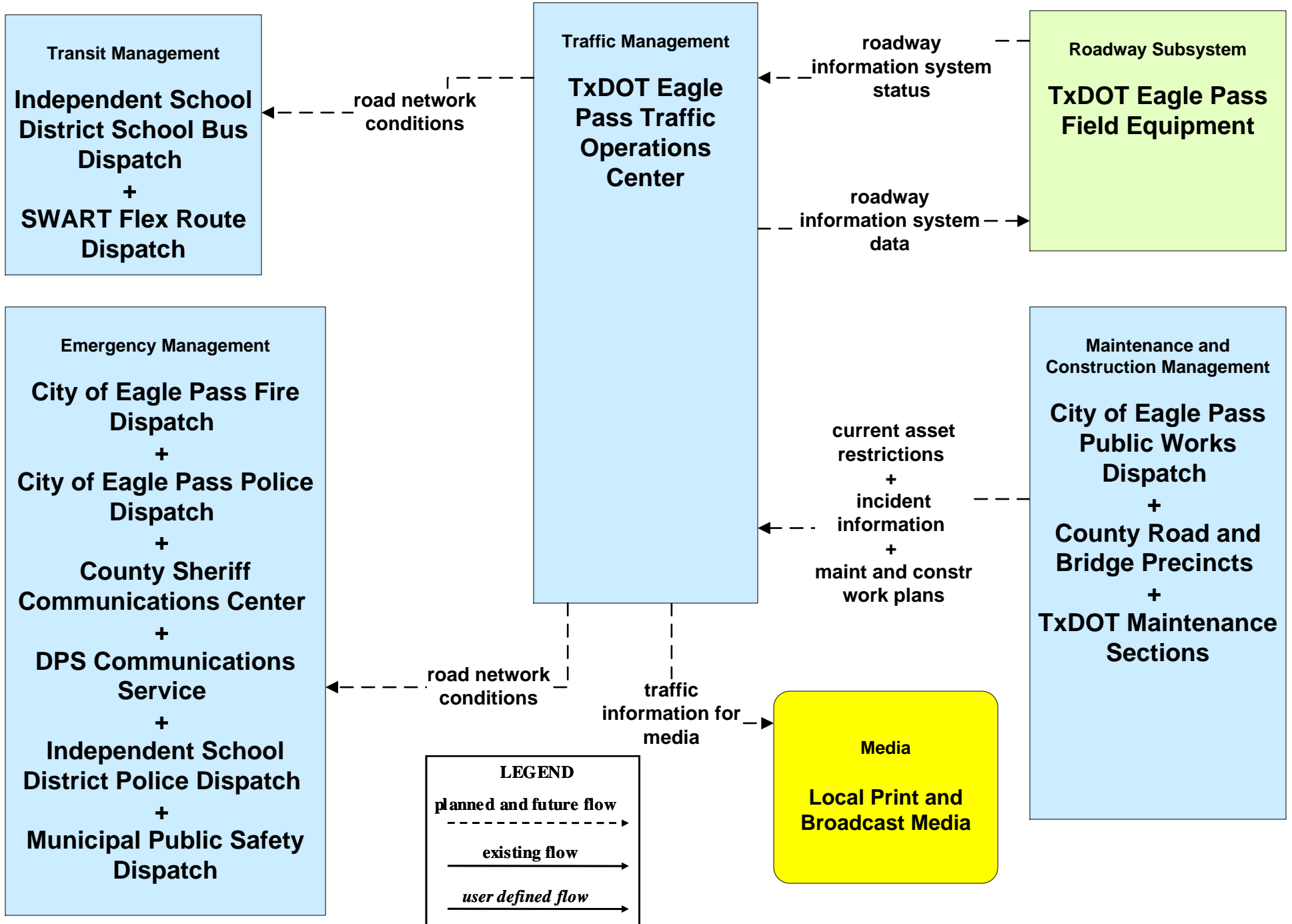
# ATIS01 - Broadcast Traveler Information TxDOT DriveTexas (Outputs)



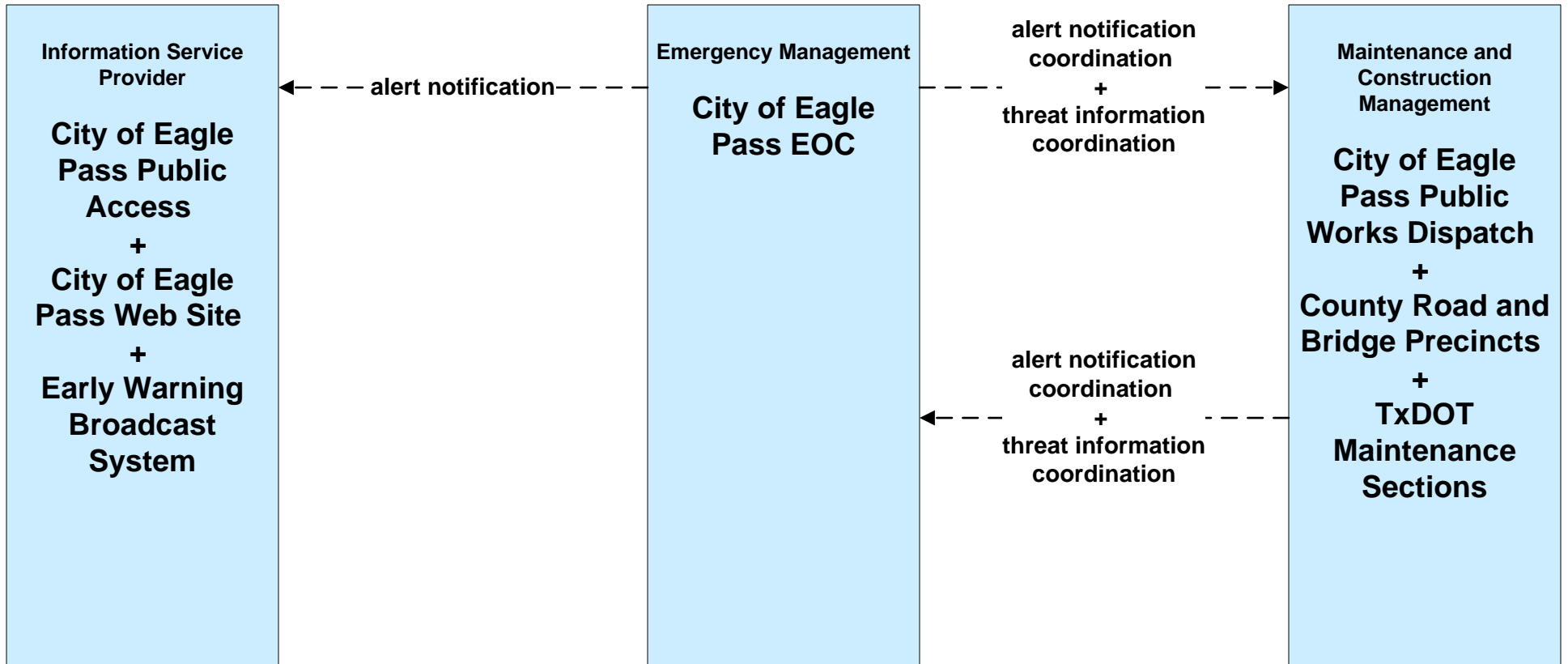
# ATMS06 - Traffic Information Dissemination City of Eagle Pass



# ATMS06 - Traffic Information Dissemination TxDOT Eagle Pass

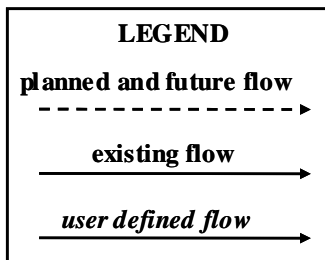


**EM06 - Wide-Area Alert  
City of Eagle Pass EOC (2 of 2)**

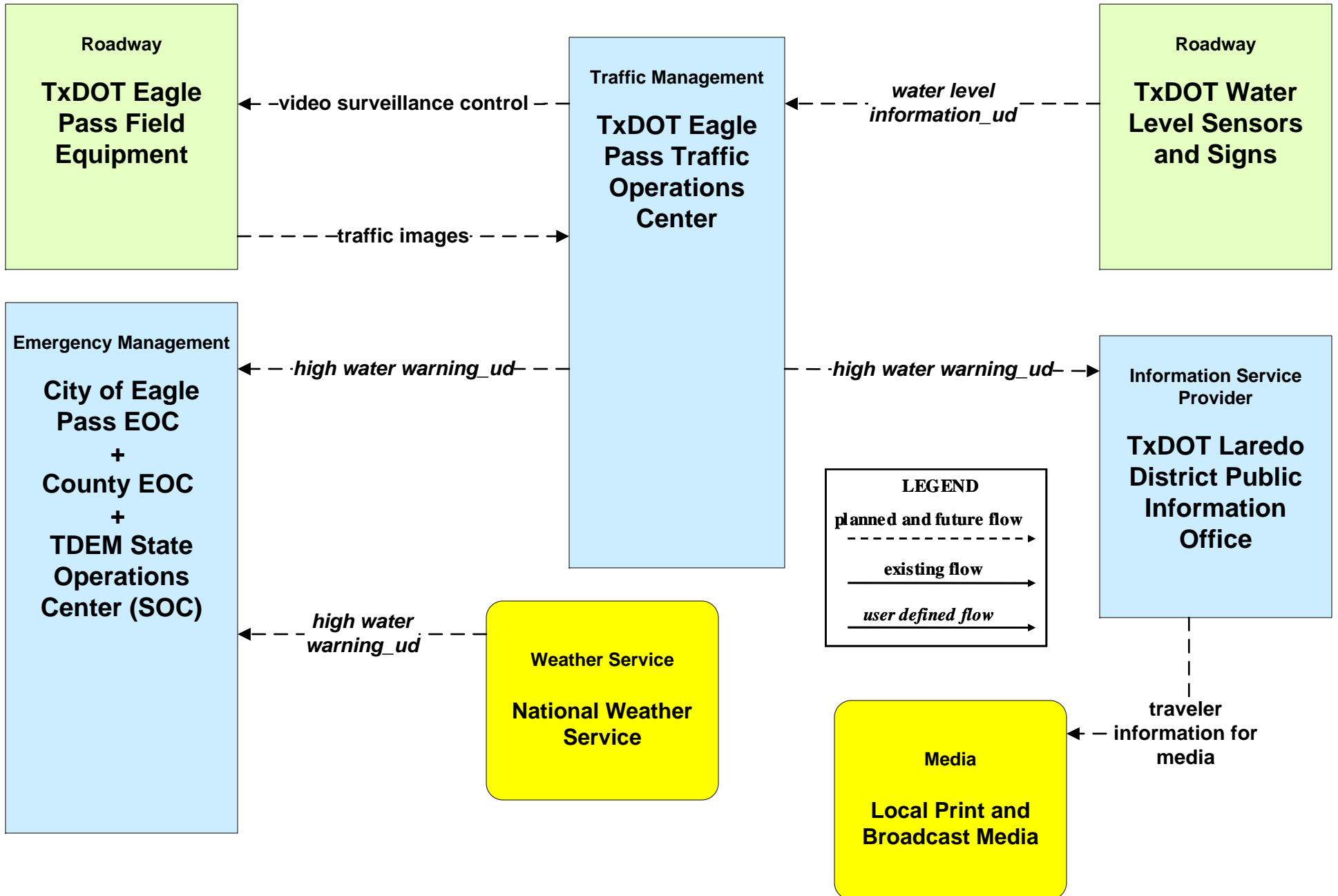


incident information for-  
media →

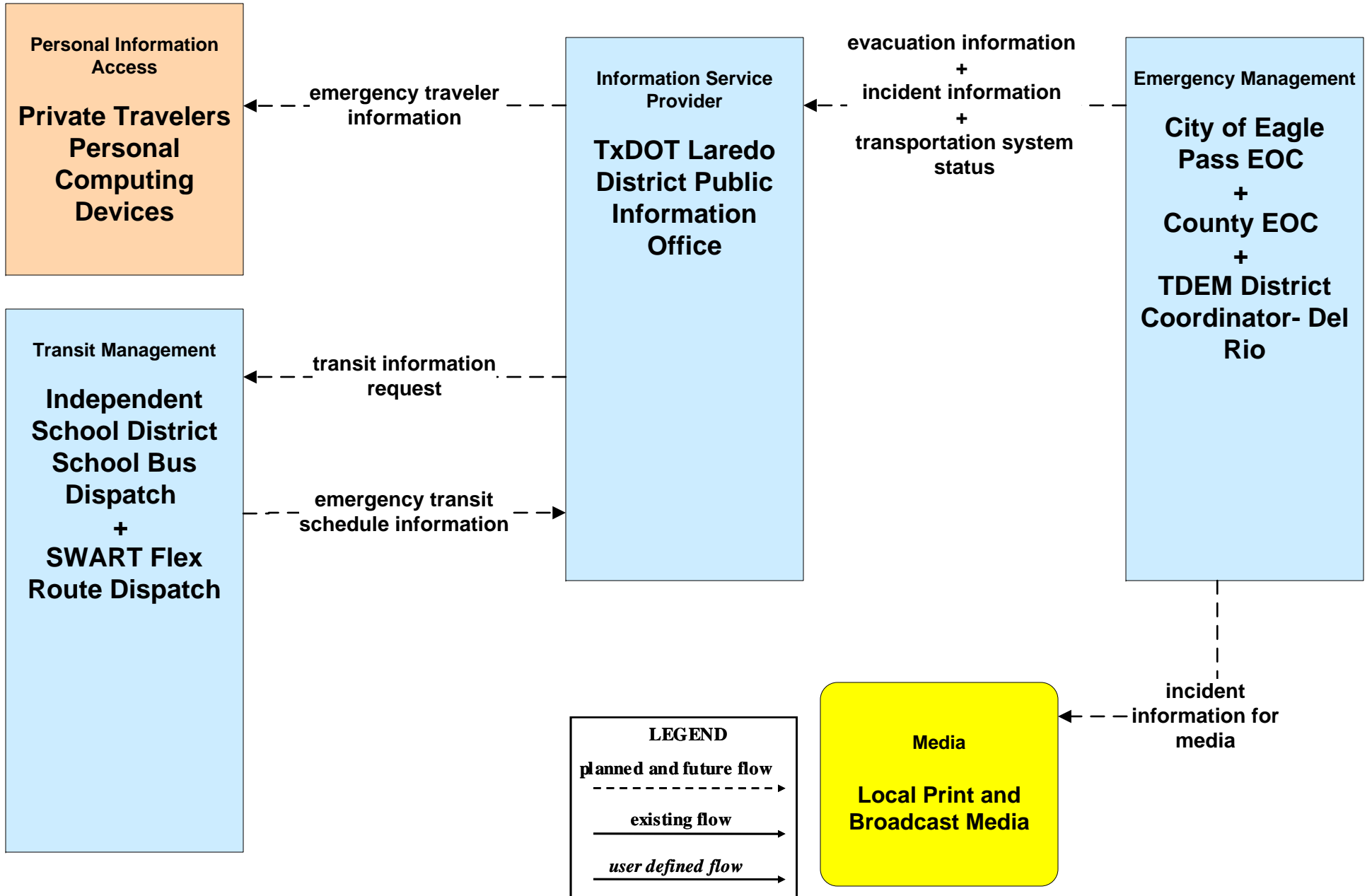
**Media**  
**Local Print and Broadcast Media**



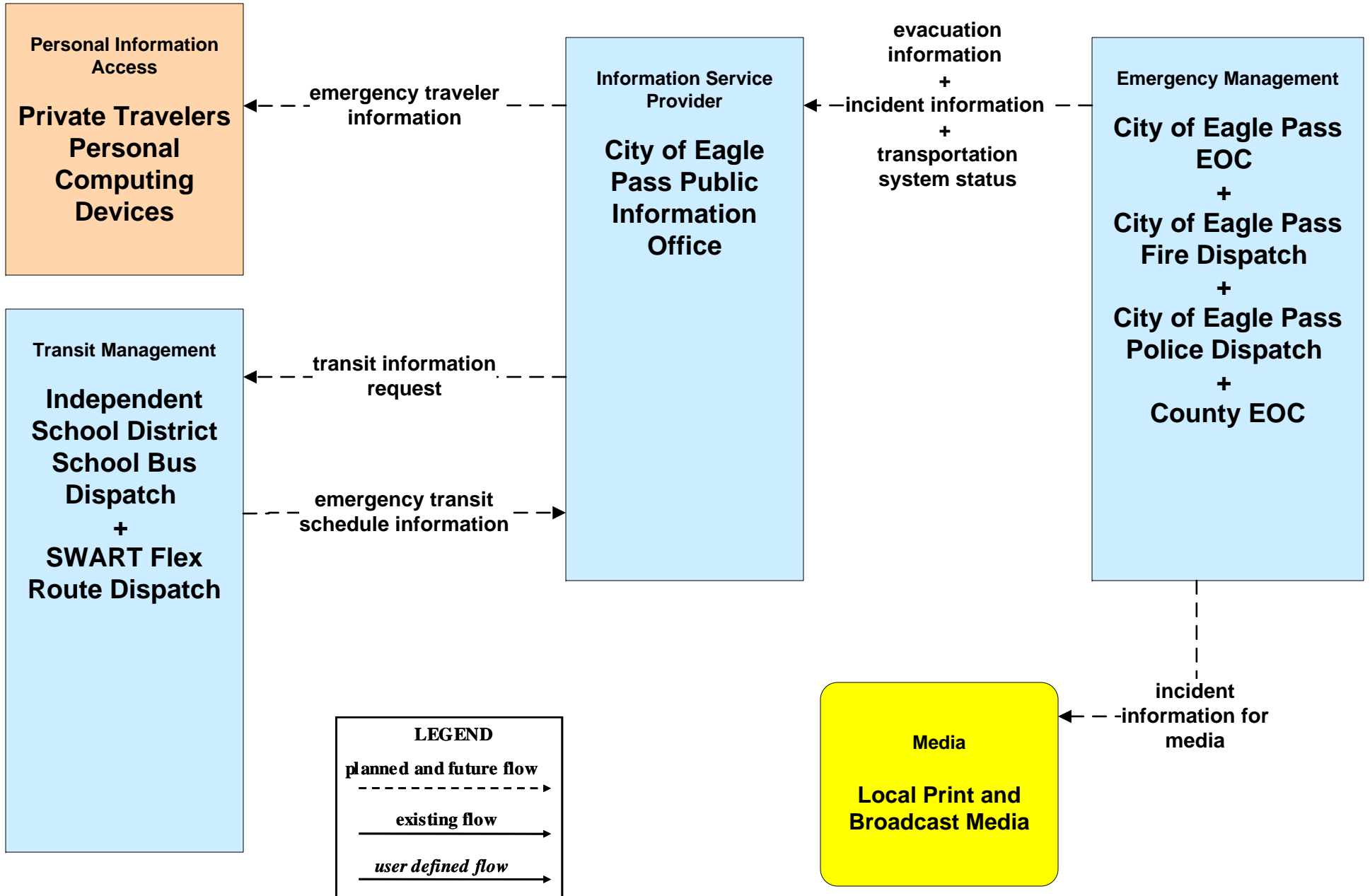
**EM07 - Early Warning System  
TxDOT Flood Monitoring (1 of 2)**



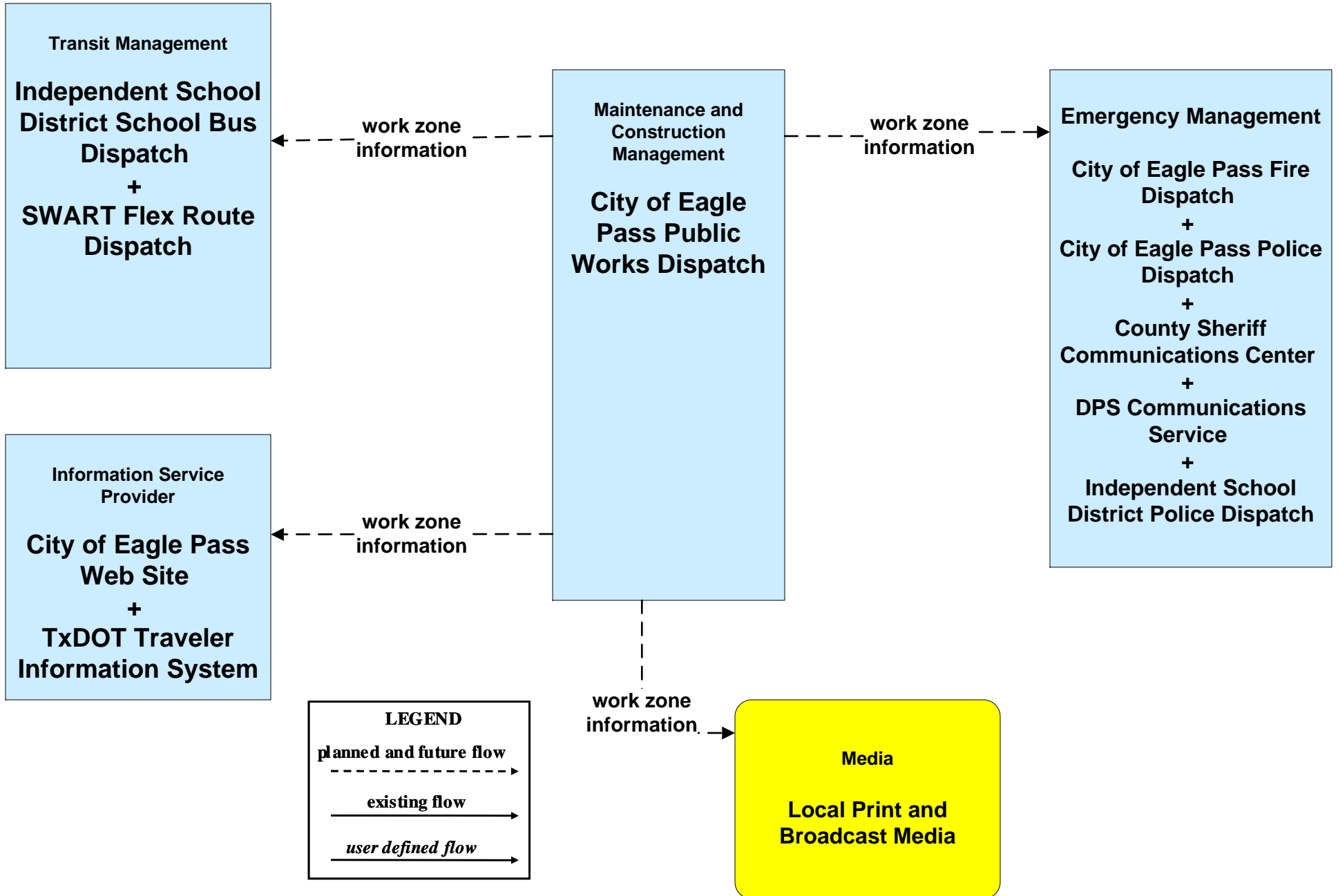
**EM10 - Disaster Traveler Information  
TxDOT**



# EM10 - Disaster Traveler Information City of Eagle Pass

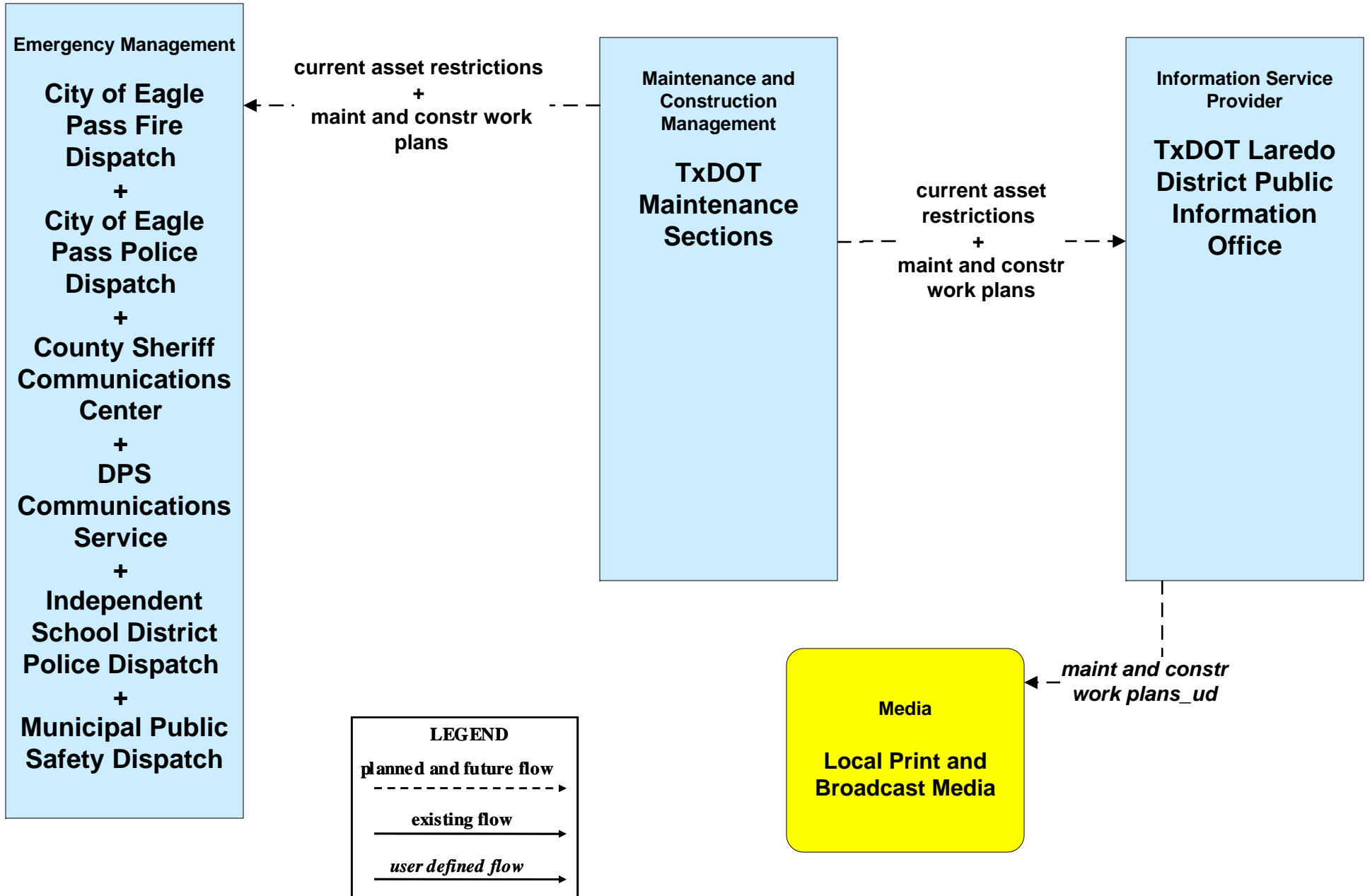


**MC08 - Work Zone Management  
City of Eagle Pass Maintenance (2 of 2)**





**MC10 - Maintenance and Construction Activity Coordination  
TxDOT Maintenance Sections (2 of 2)**



**MC10 - Maintenance and Construction Activity Coordination  
City of Eagle Pass (2 of 2)**

