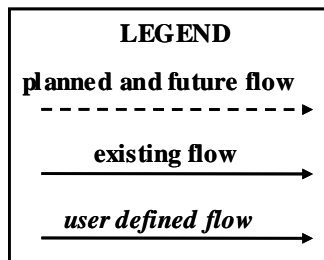
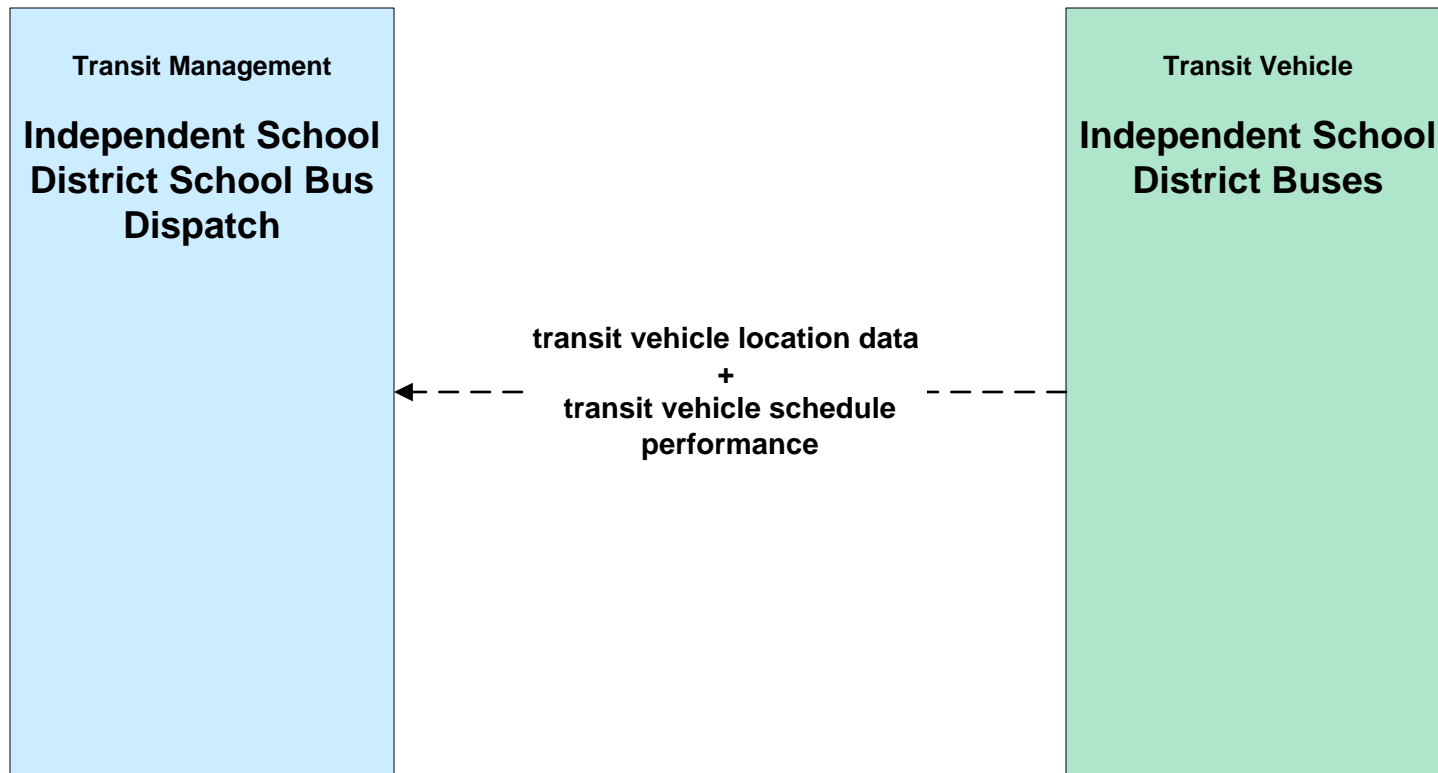


Eagle Pass, Tx Regional ITS Architecture

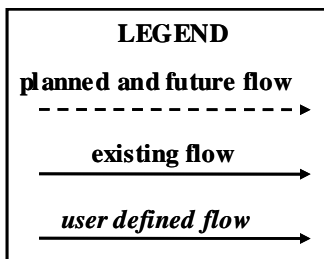
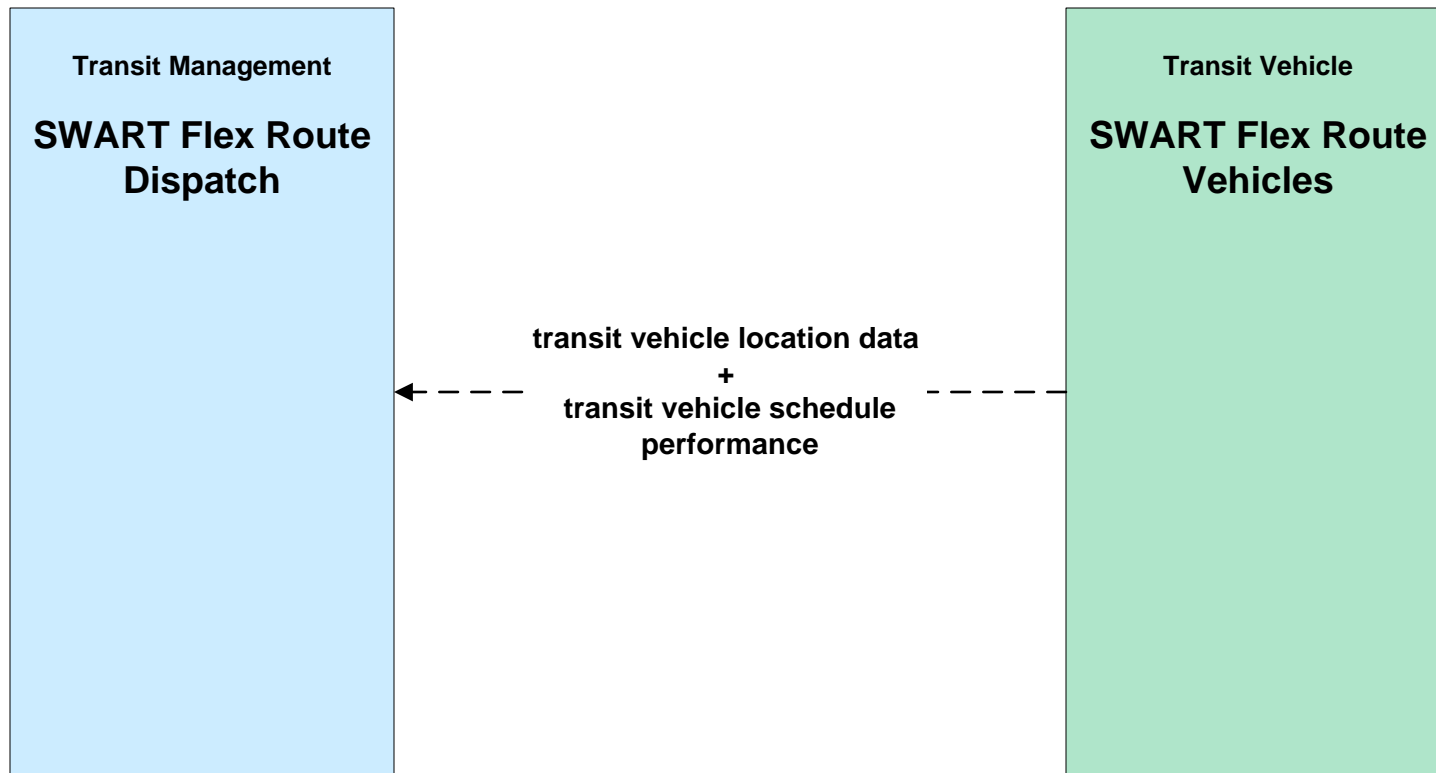
Customized Service Package Diagrams

**Advanced Public Transportation Systems
(APTS)**

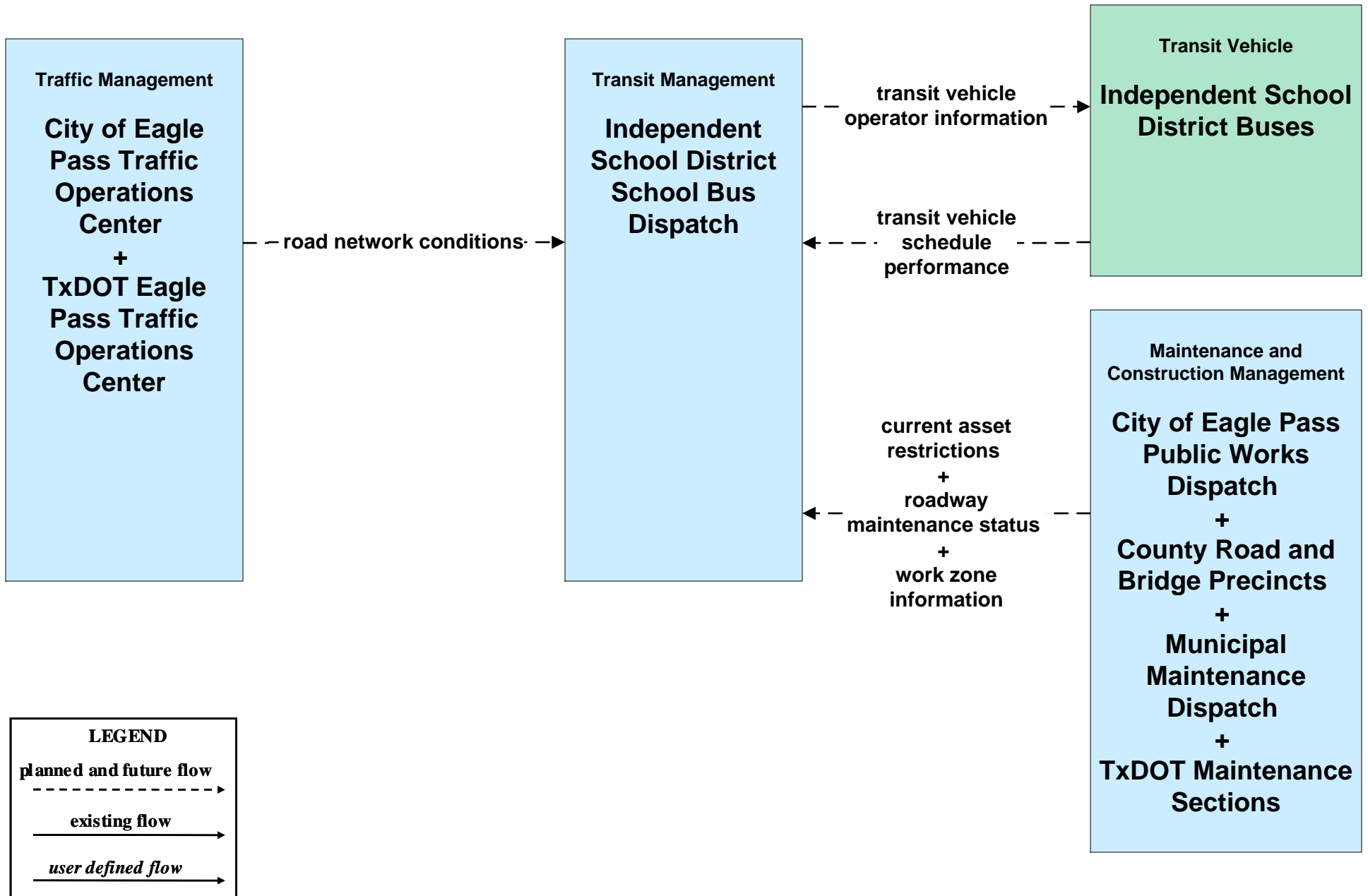
**APTS01 - Transit Vehicle Tracking
Independent School Districts**



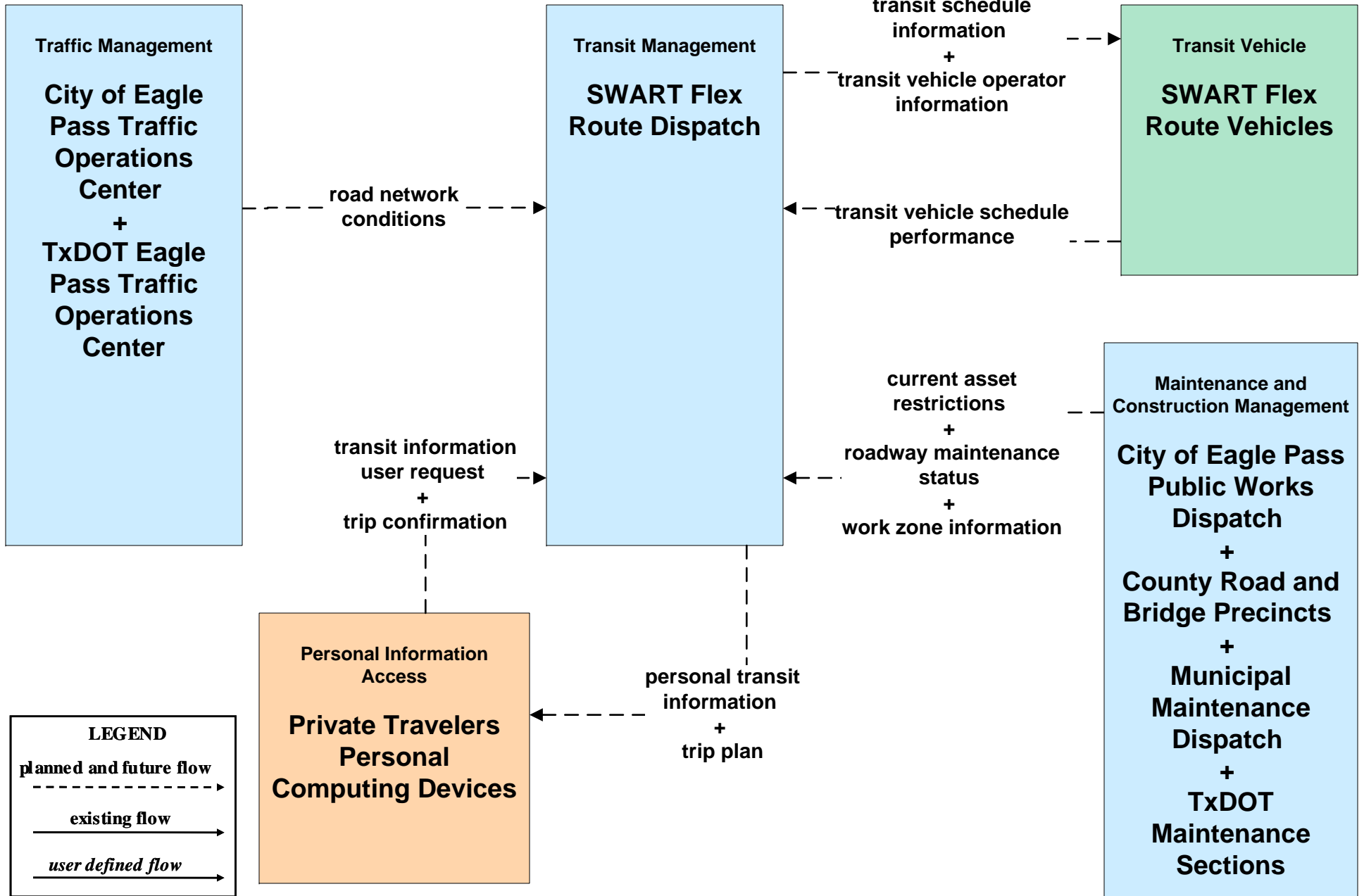
**APTS01 - Transit Vehicle Tracking
Southwest Area Regional Transit District**



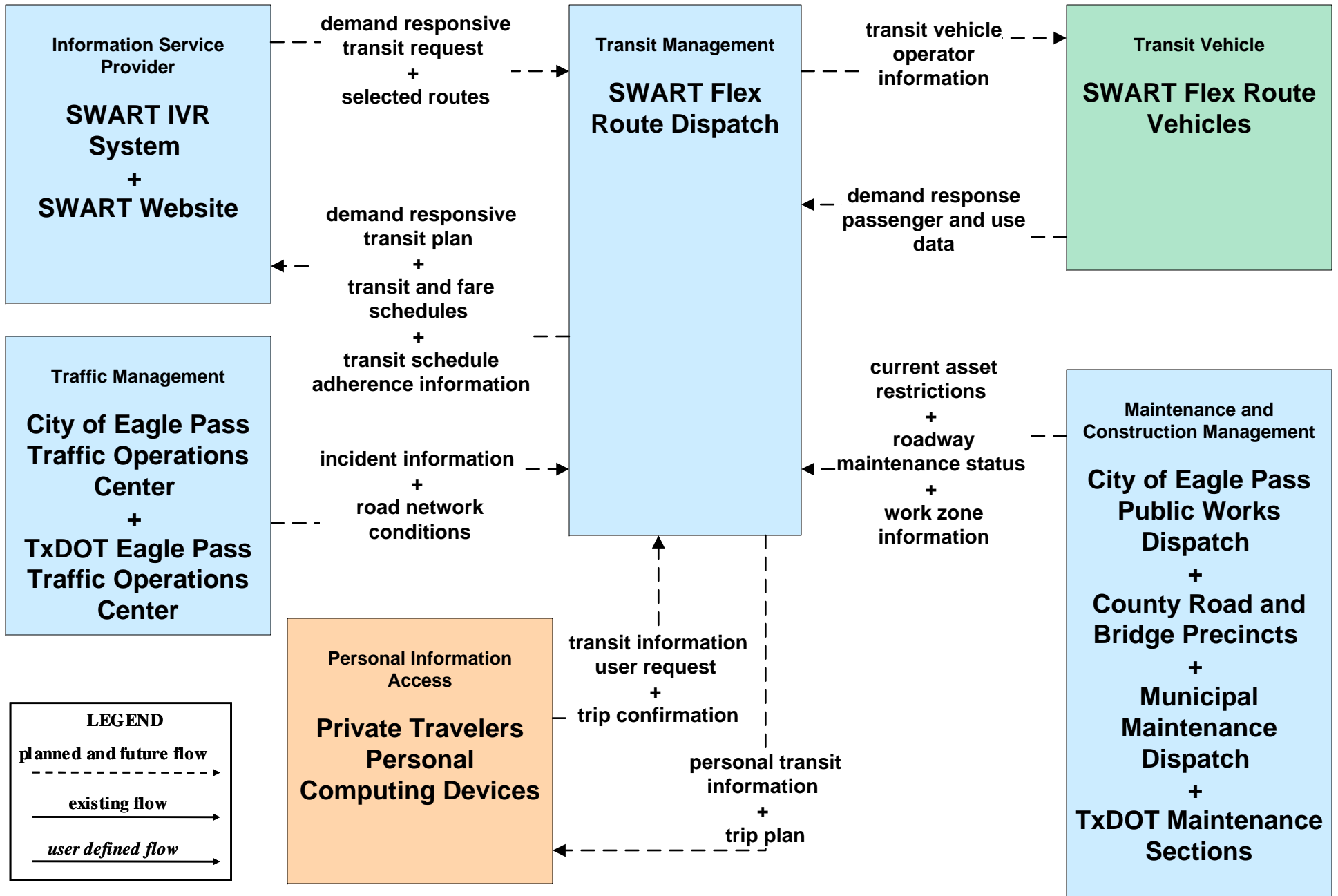
**APTS02 - Transit Fixed-Route Operations
Independent School Districts**



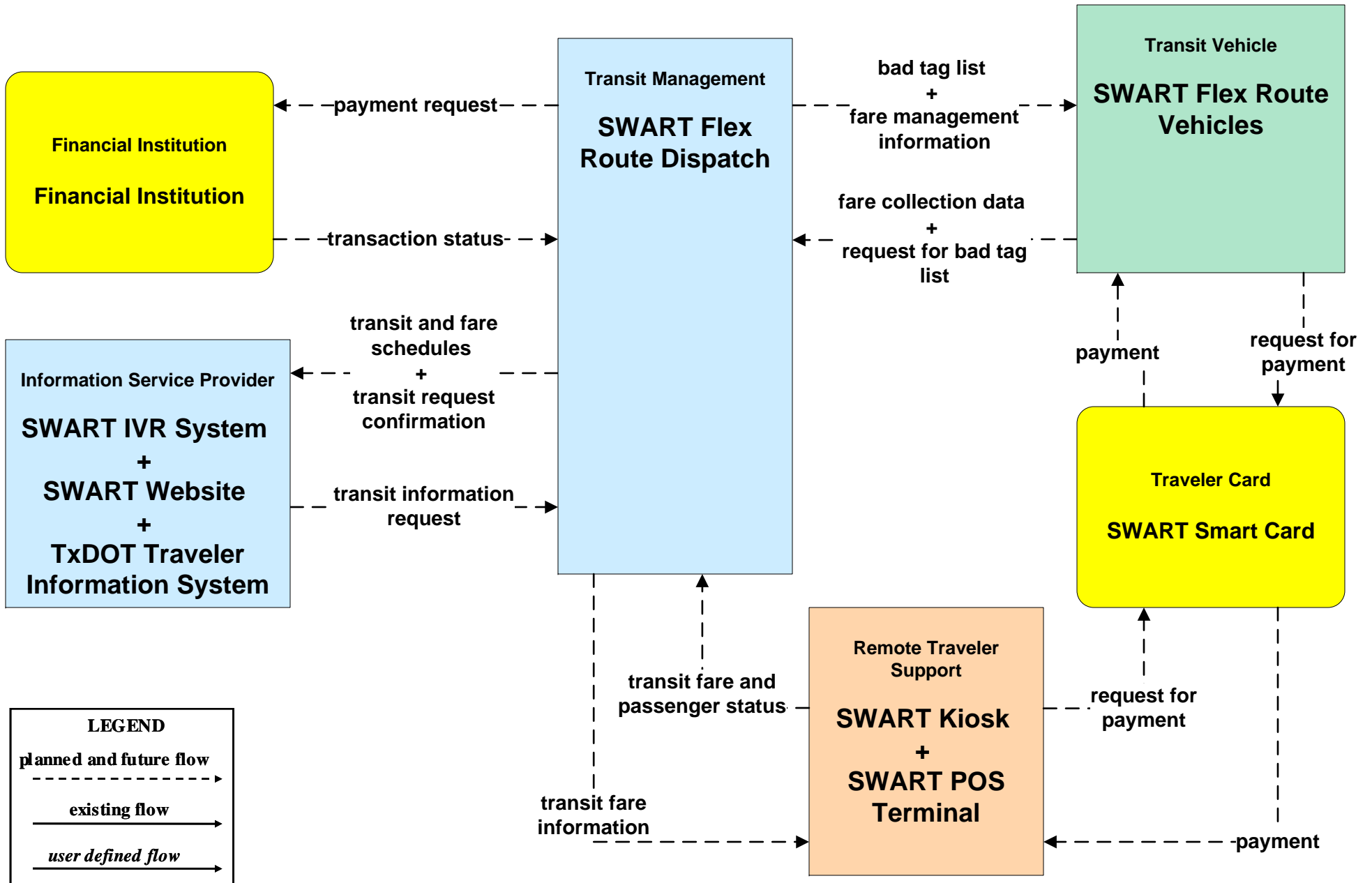
**APTS02 - Transit Fixed-Route Operations
Southwest Area Regional Transit District - Flex Routing**



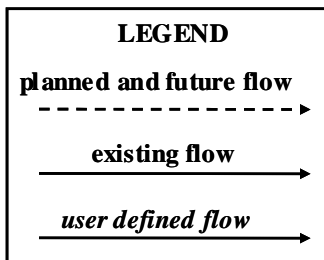
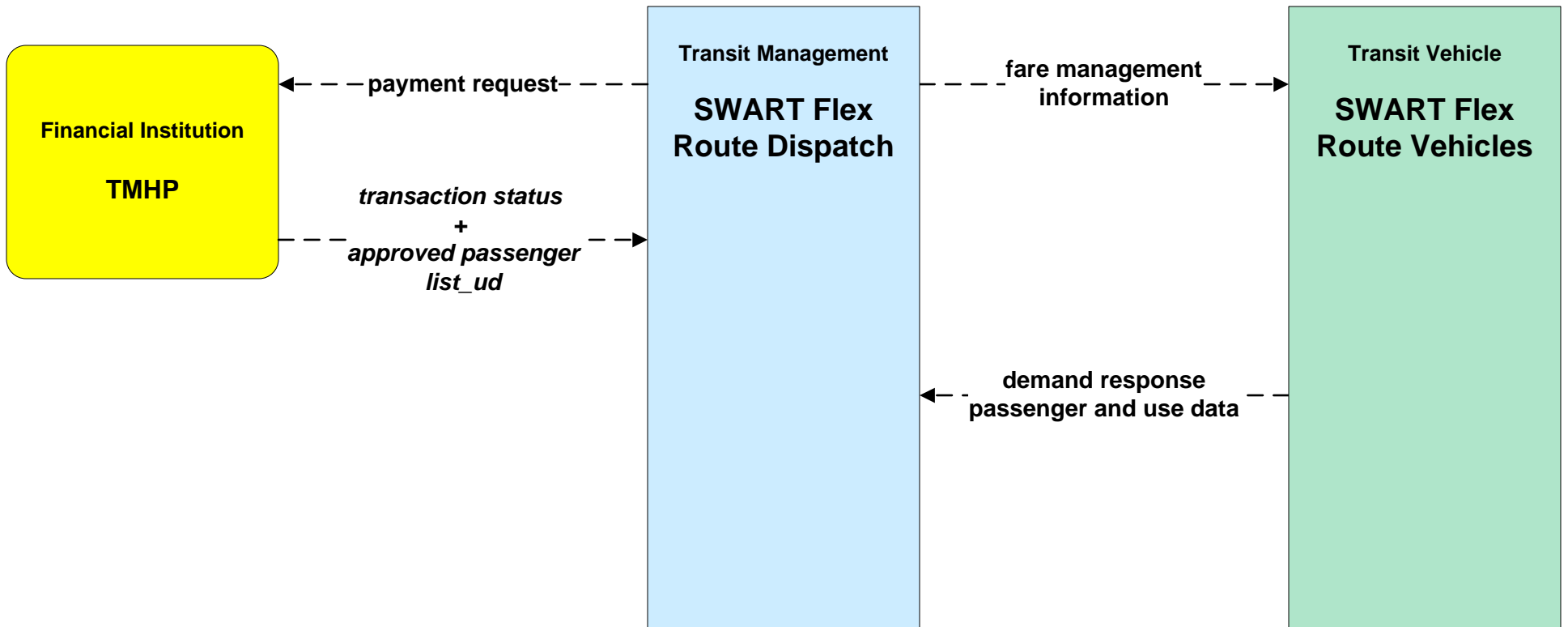
APTS03 - Demand Response Transit Operations Southwest Area Regional Transit District - Flex Routing



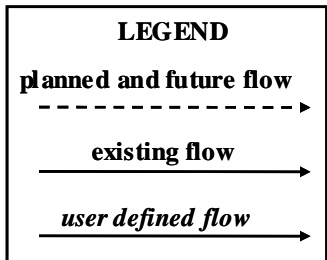
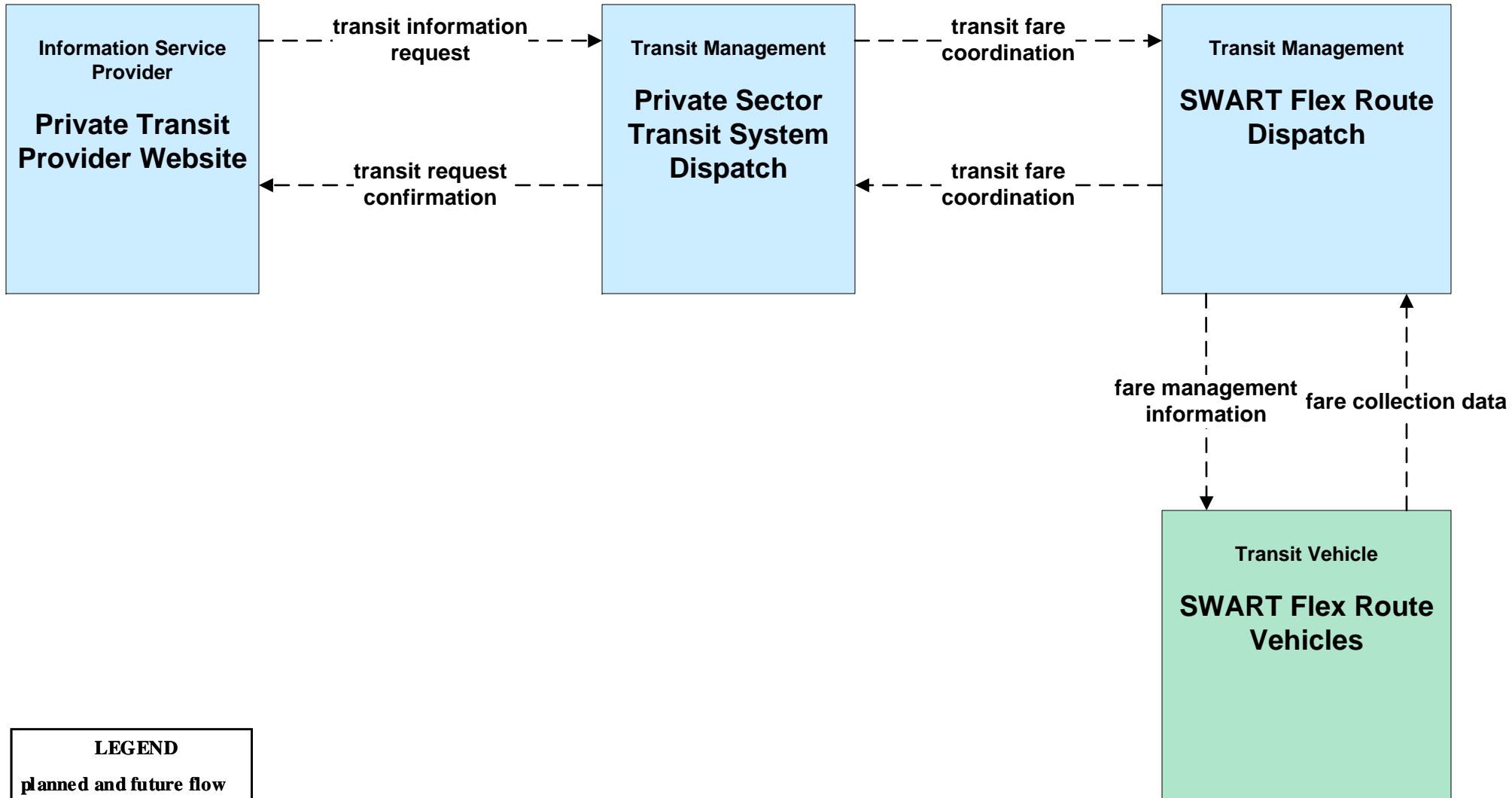
APTS04 - Transit Fare Collection Management
Southwest Area Regional Transit District - Non Medical



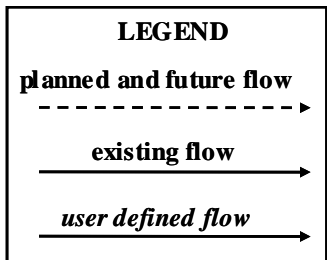
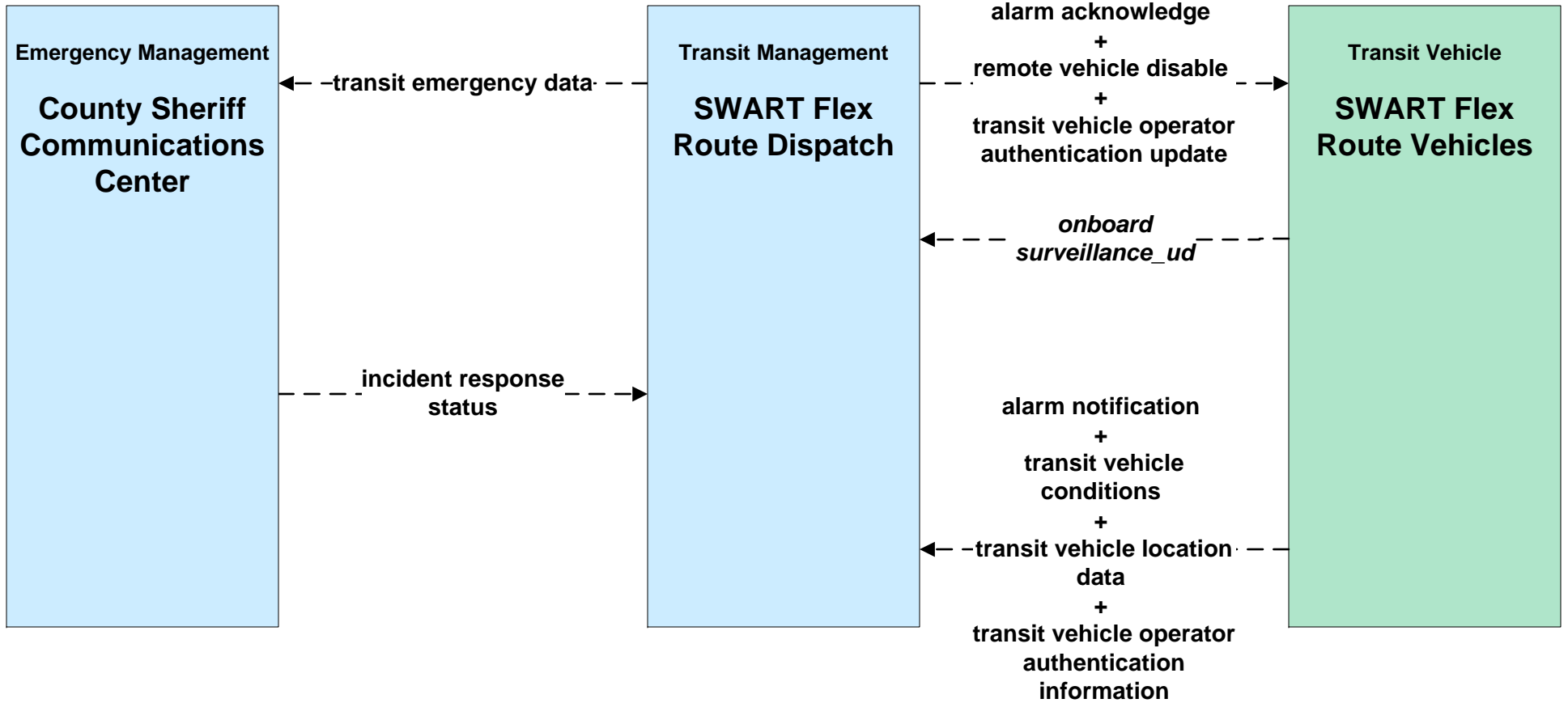
APTS04 - Transit Fare Collection Management
Southwest Area Regional Transit District - Medical Transportation Program



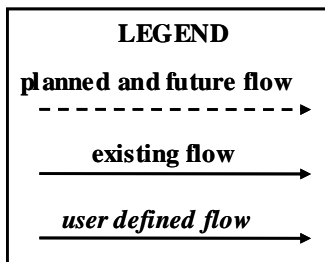
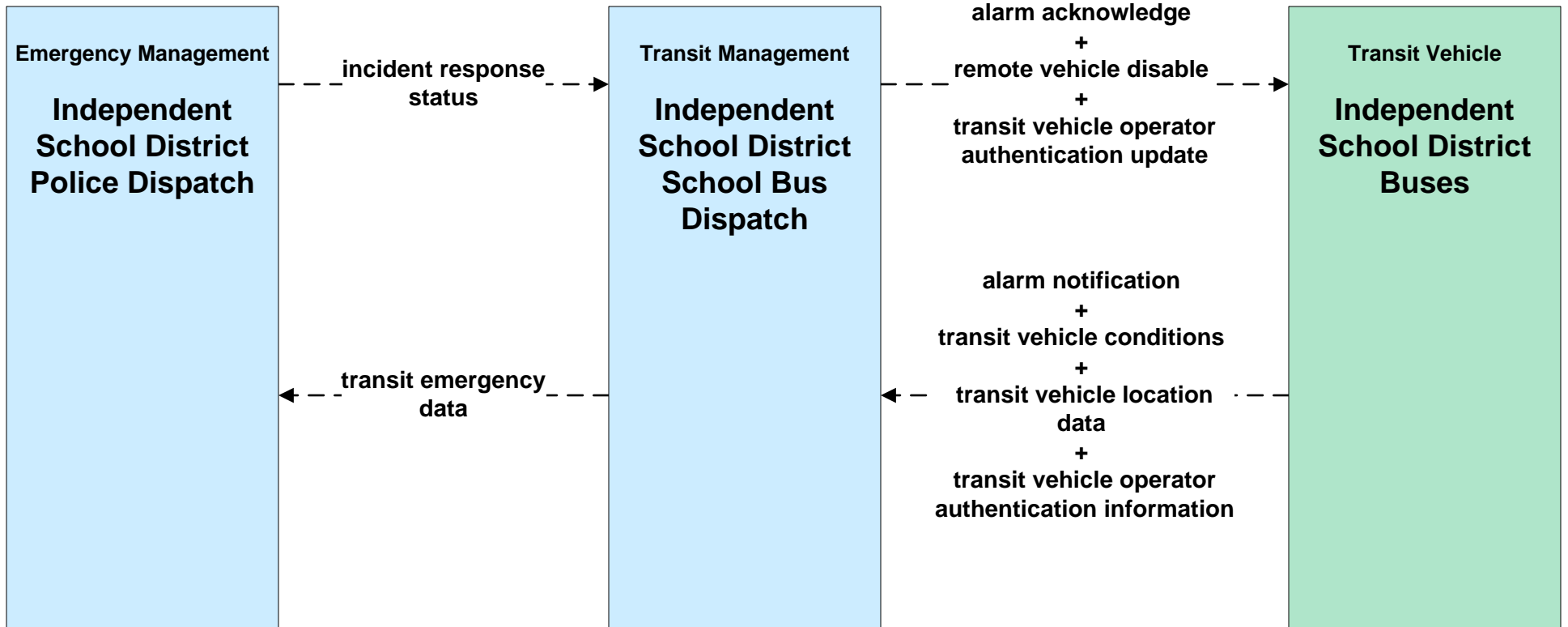
APTS04 - Transit Fare Collection Management
Southwest Area Regional Transit District - Private Transit System Fare Coordination



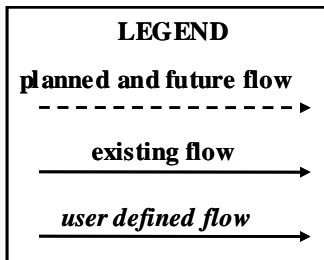
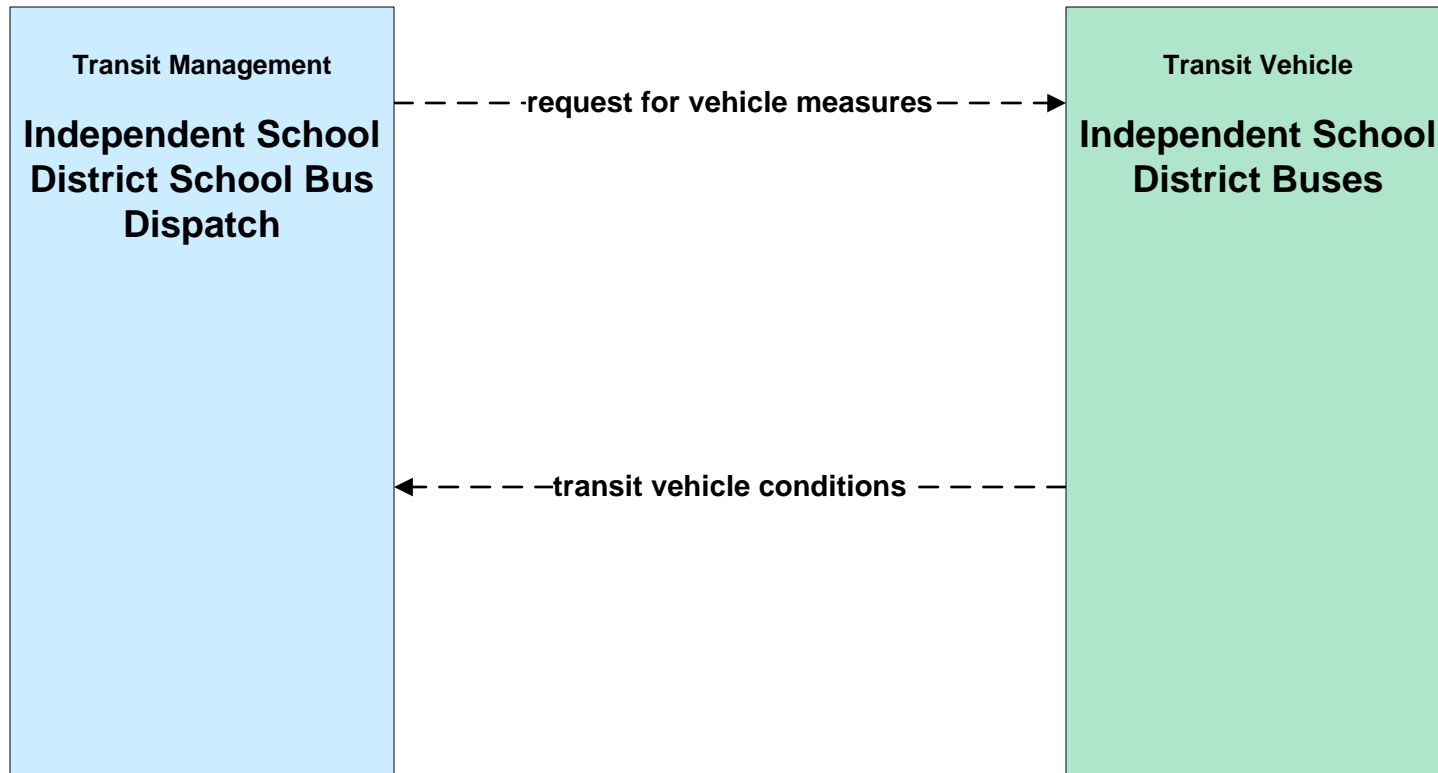
APTS05 - Transit Security
Southwest Area Regional Transit District



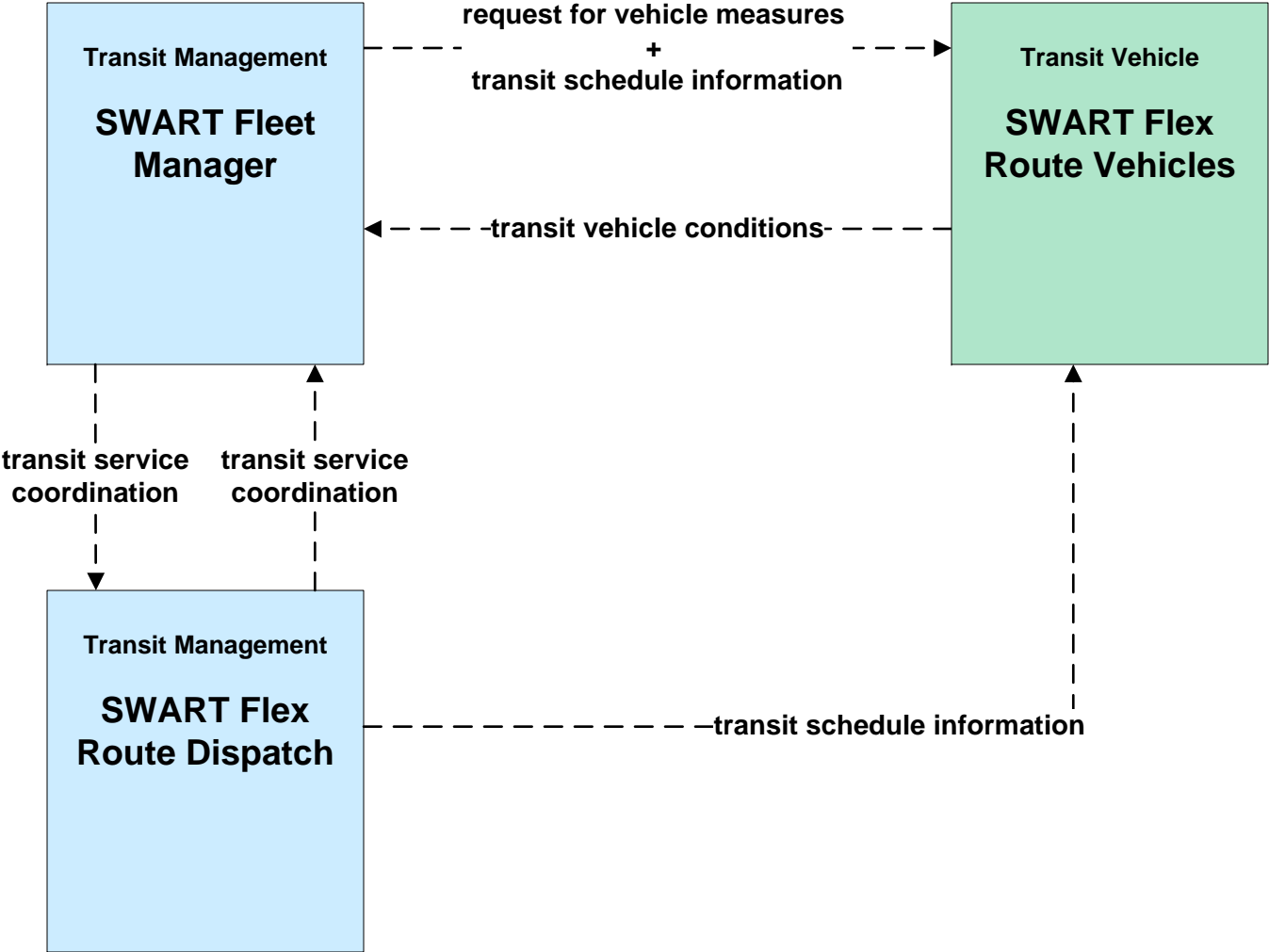
APTS05 - Transit Security Independent School Districts



**APTS06 - Transit Vehicle Maintenance
Independent School Districts**



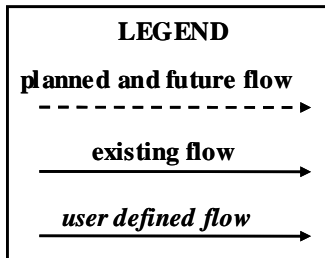
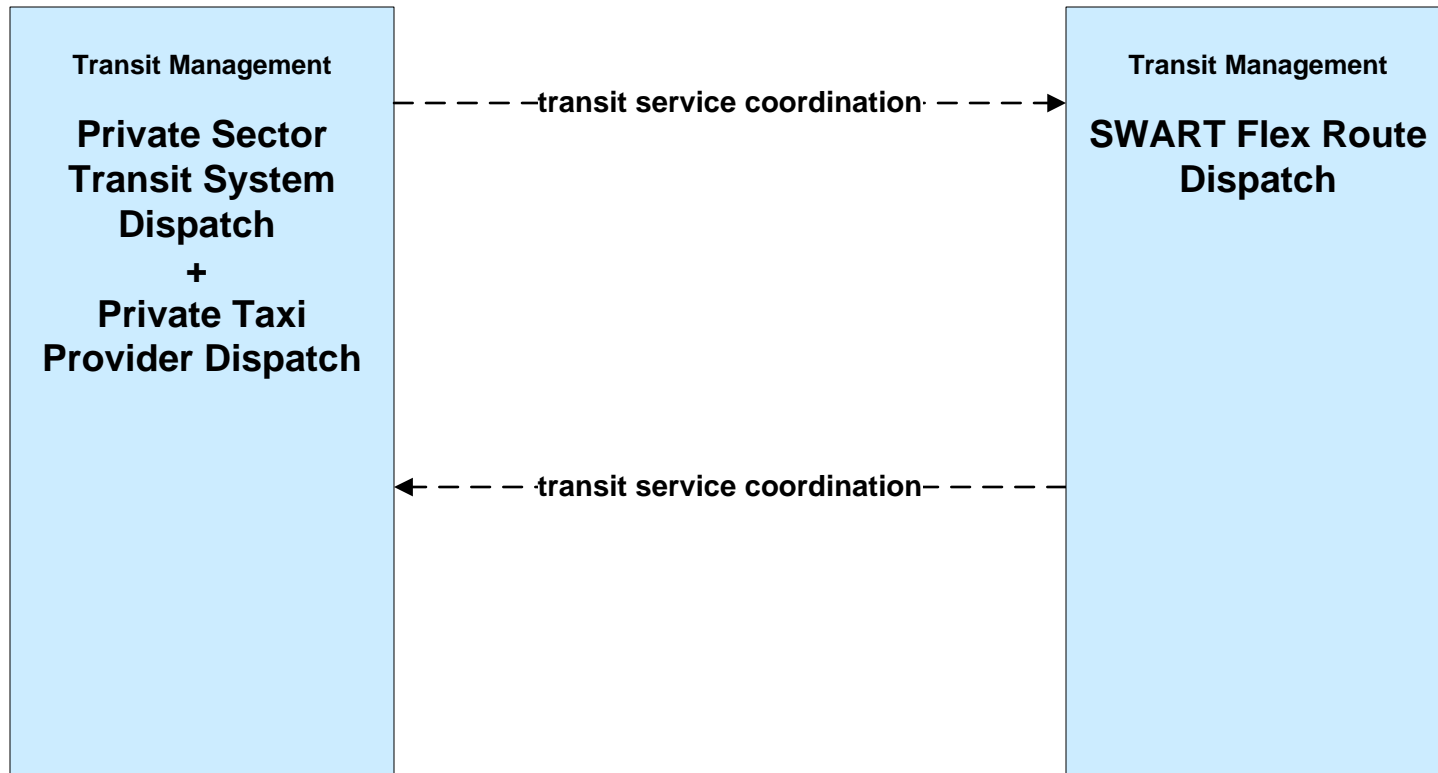
**APTS06 - Transit Vehicle Maintenance
Southwest Area Regional Transit District**



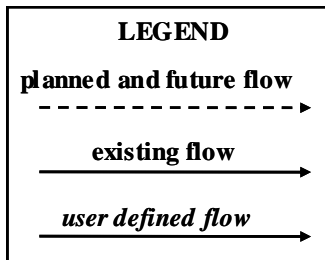
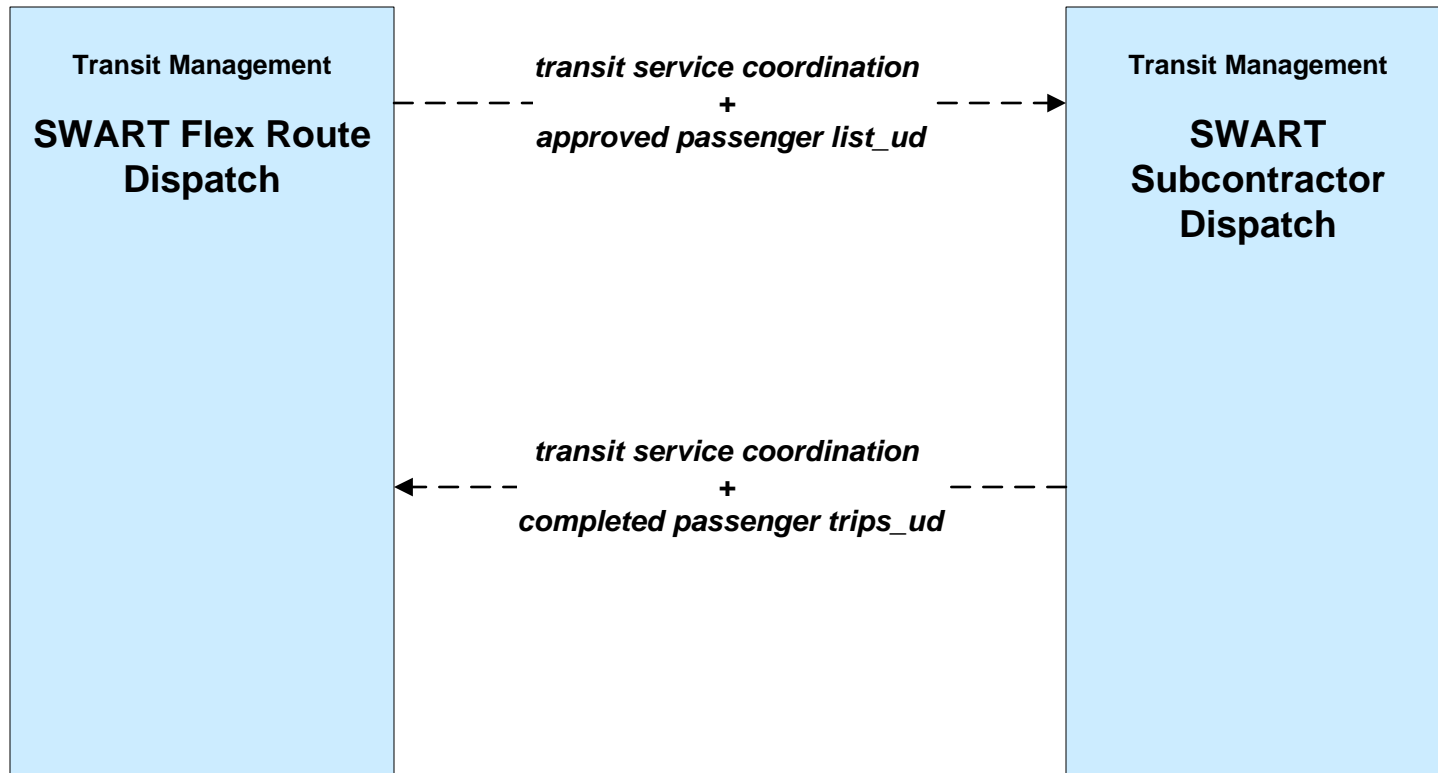
LEGEND

- planned and future flow
----->
- existing flow
—————>
- user defined flow
—————>

**APTS07 - Multimodal Coordination
Southwest Area Regional Transit District**



**APTS07 - Multimodal Coordination
SWART DRT Subcontractors**



**APTS08 - Transit Traveler Information
Southwest Area Regional Transit District**

