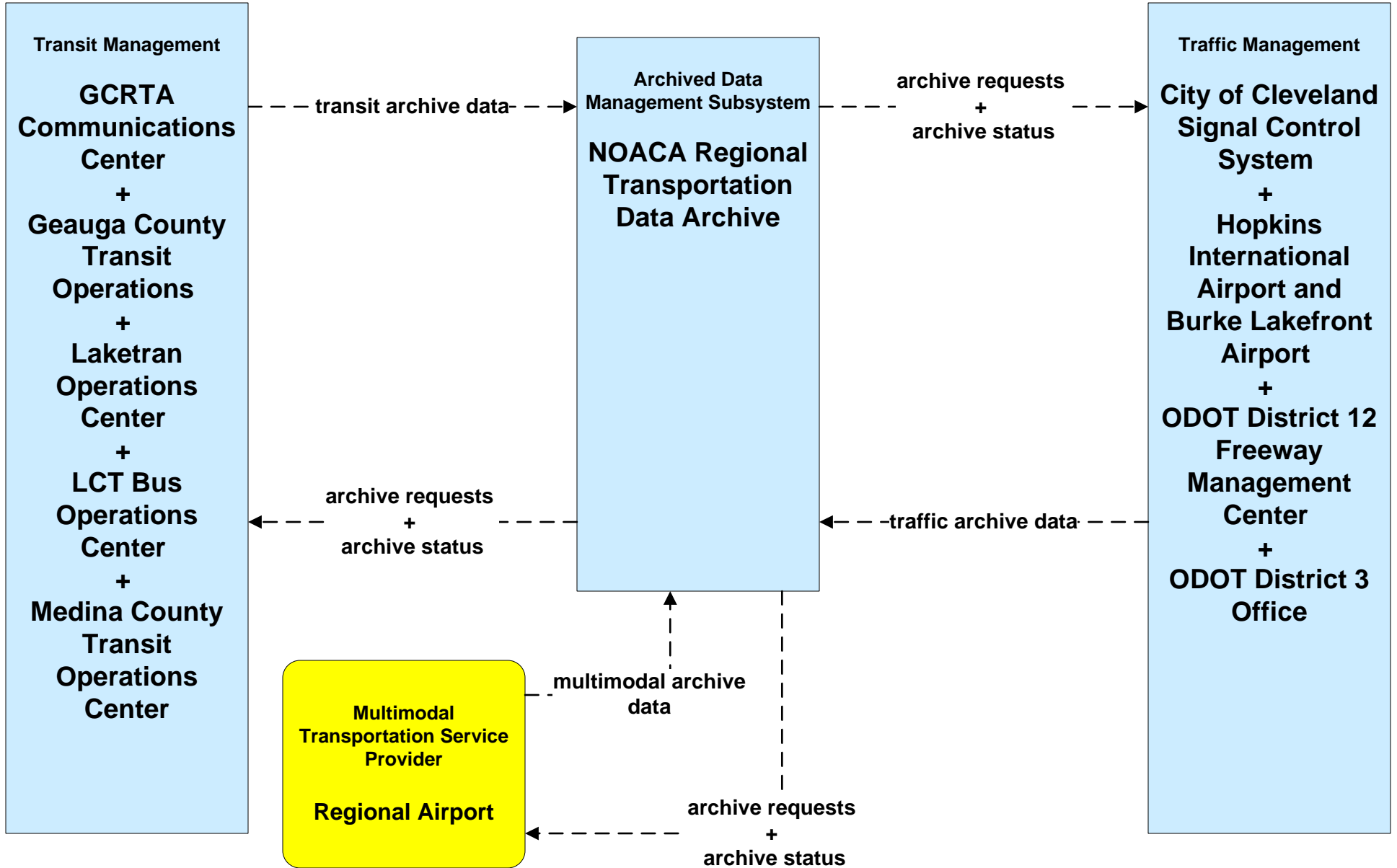
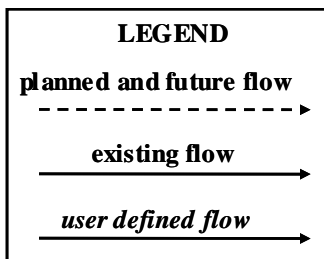
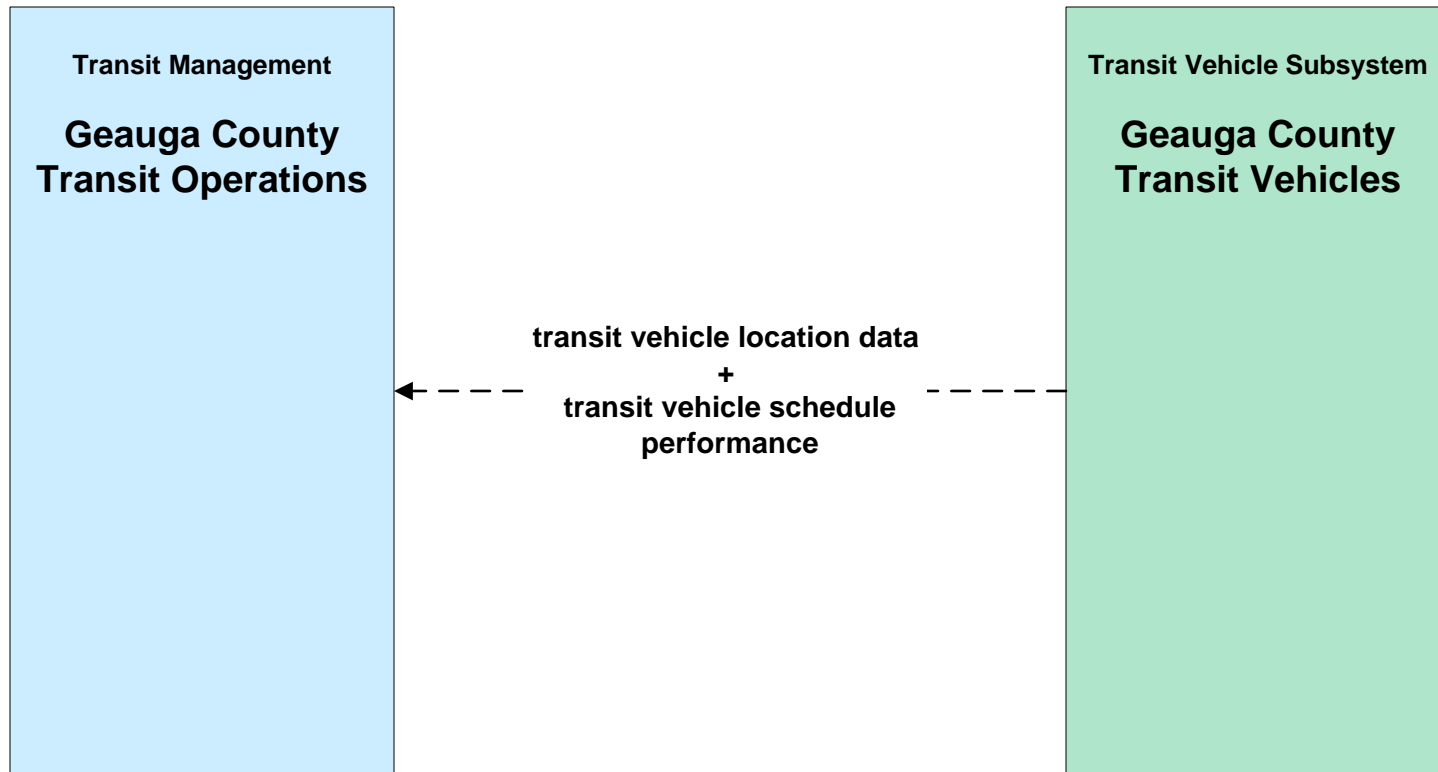


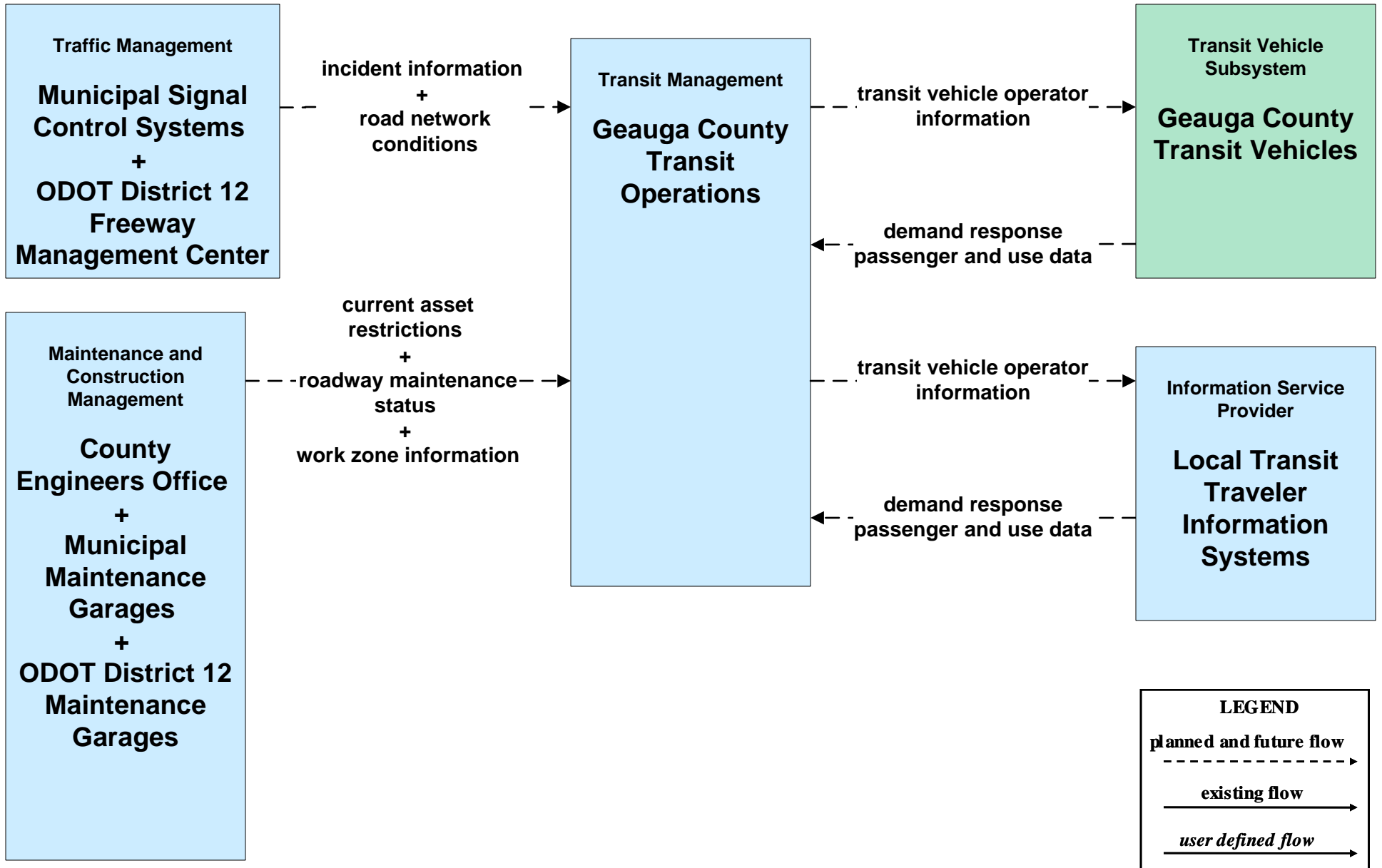
**AD2 - ITS Data Warehouse  
NOACA Regional Transportation Data Archive**



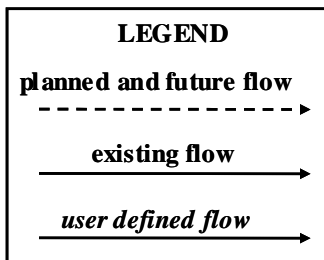
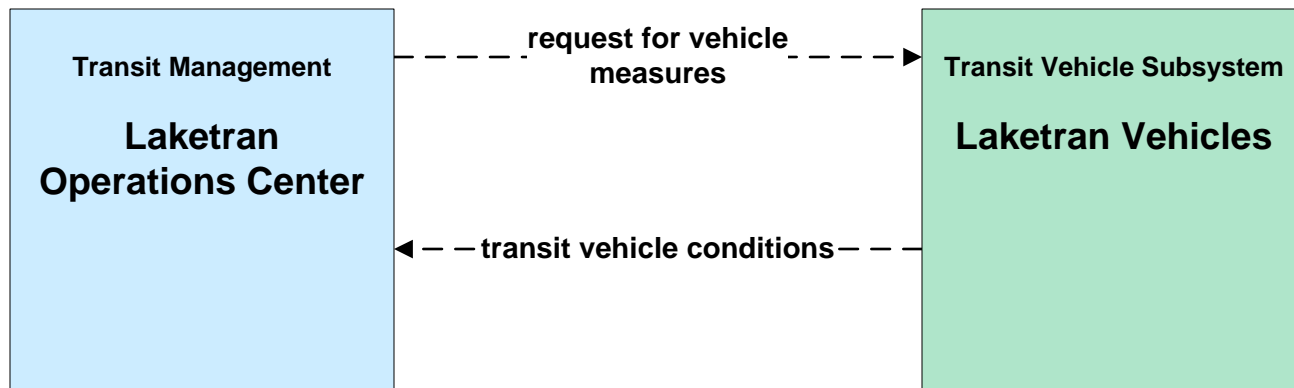
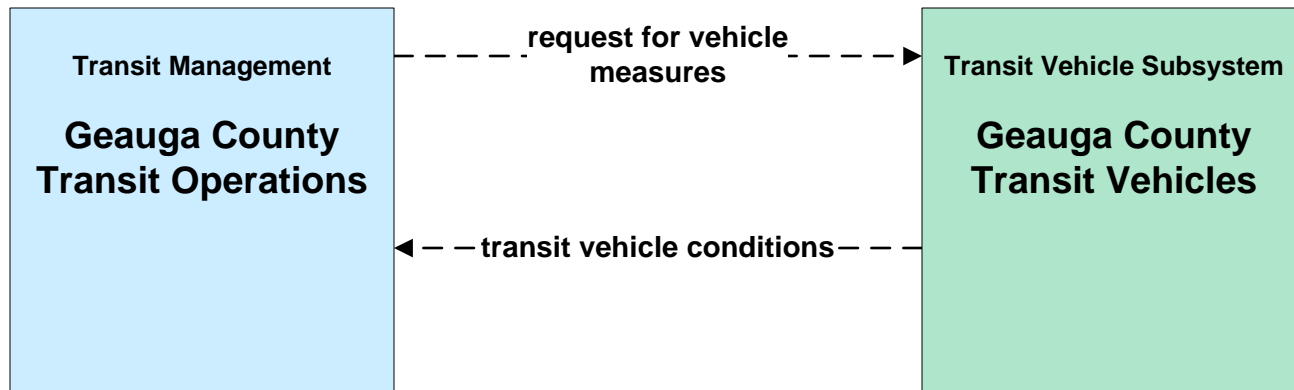
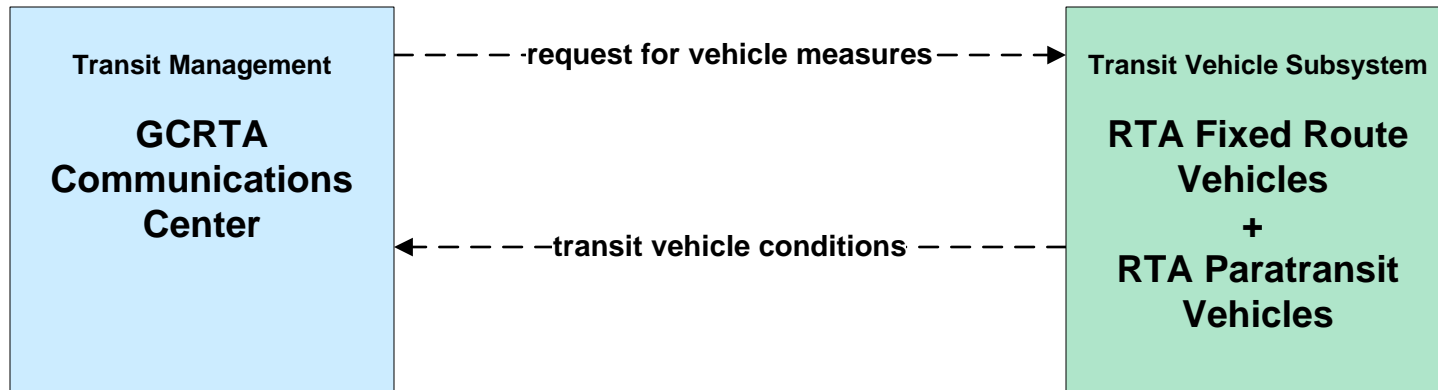
**APTS01 - Transit Vehicle Tracking  
Geauga County Transit**



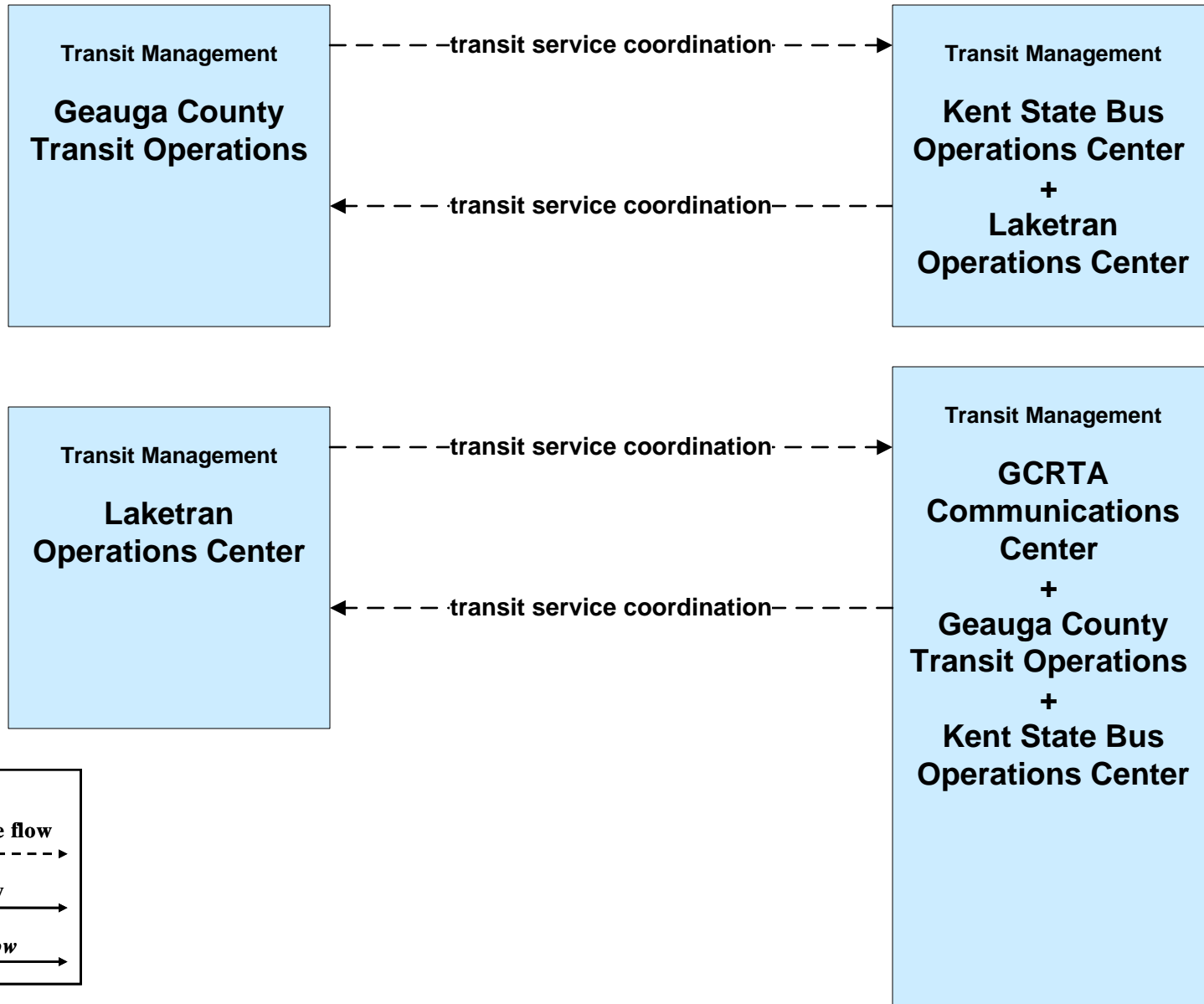
**APTS03 - Demand Response Transit Operations  
Geauga County Transit**



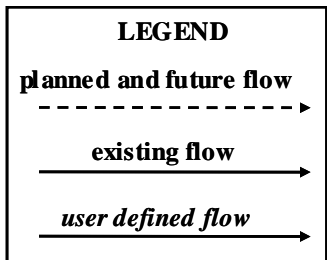
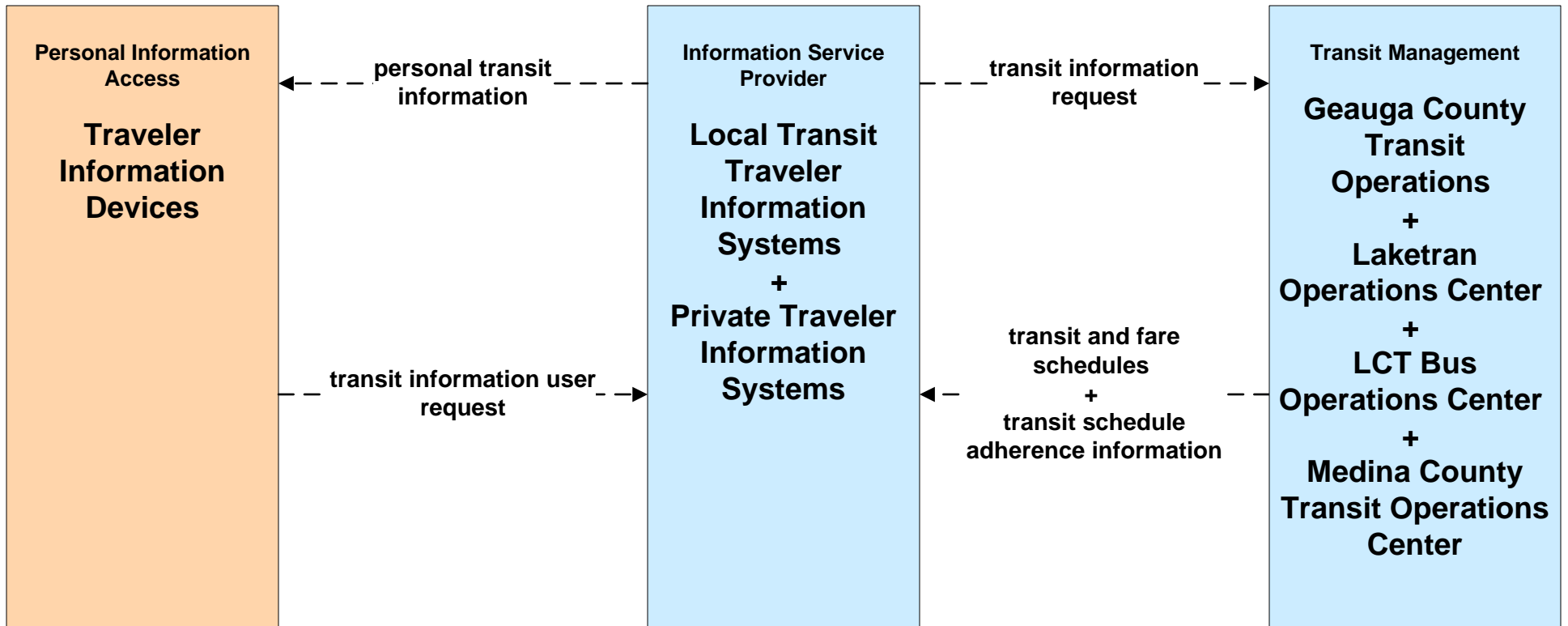
**APTS06 - Transit Vehicle Maintenance  
GCRTA / Geauga County / Laketran**



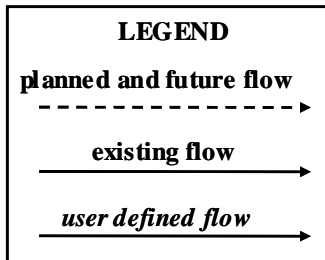
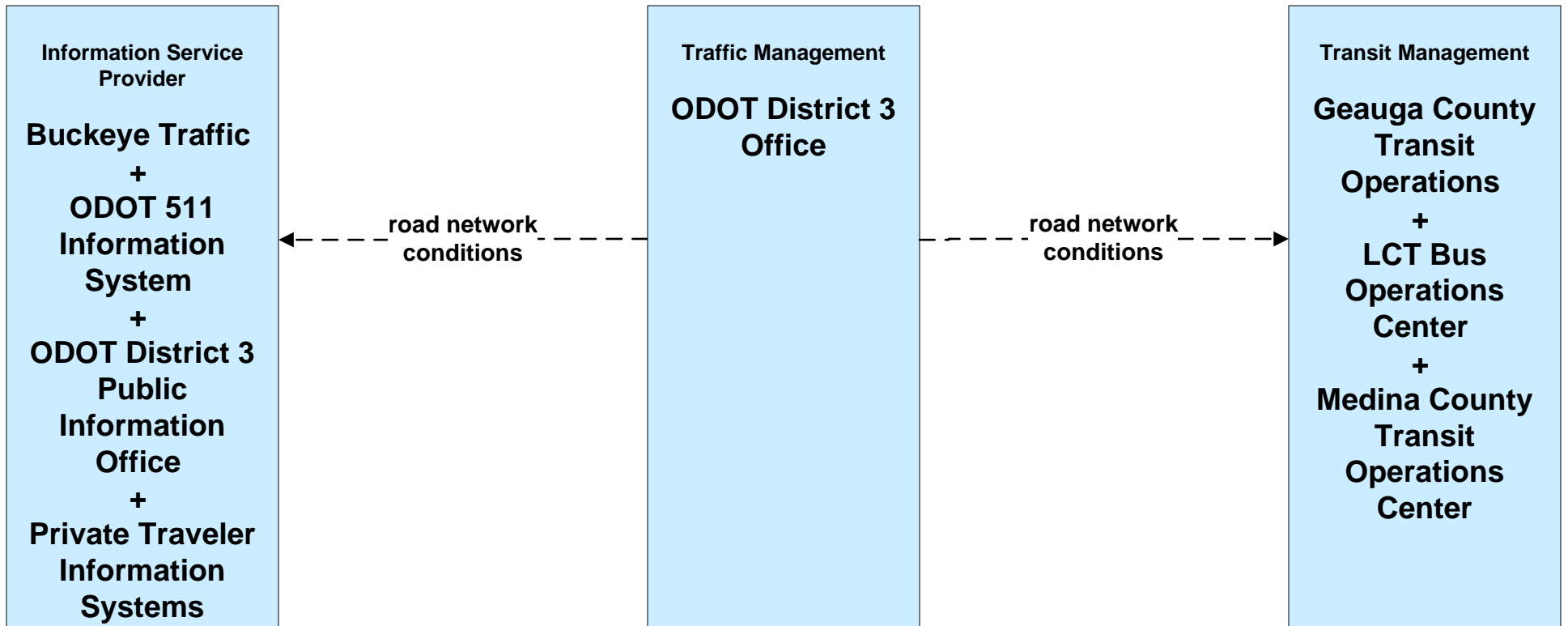
**APTS07 - Multimodal Coordination  
Geauga County / Laketrans**



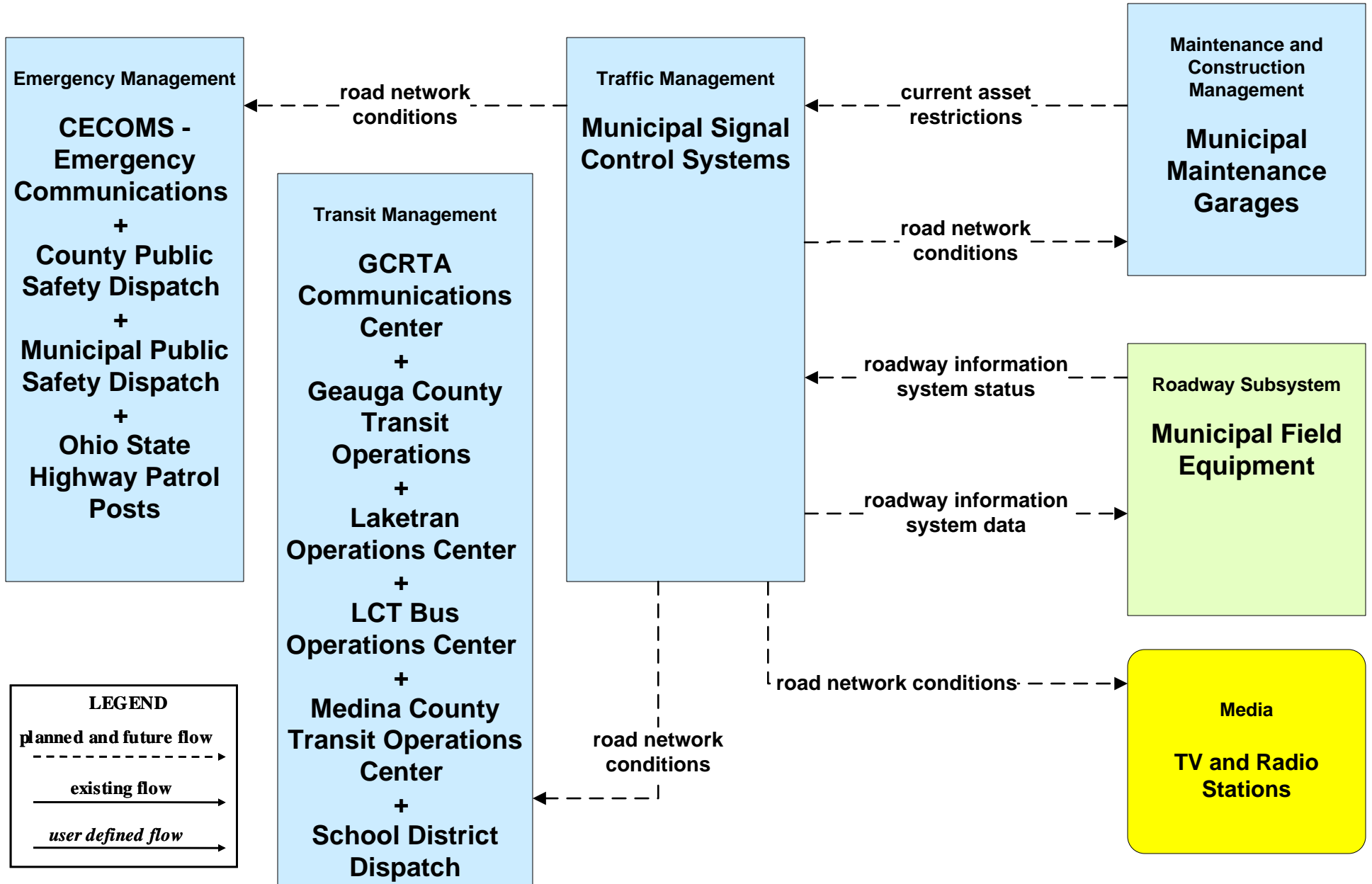
**APTS08 - Transit Traveler Information  
Local Transit Traveler Information Systems**



**ATMS06 - Traffic Information Dissemination  
ODOT District 3 (2 of 2)**

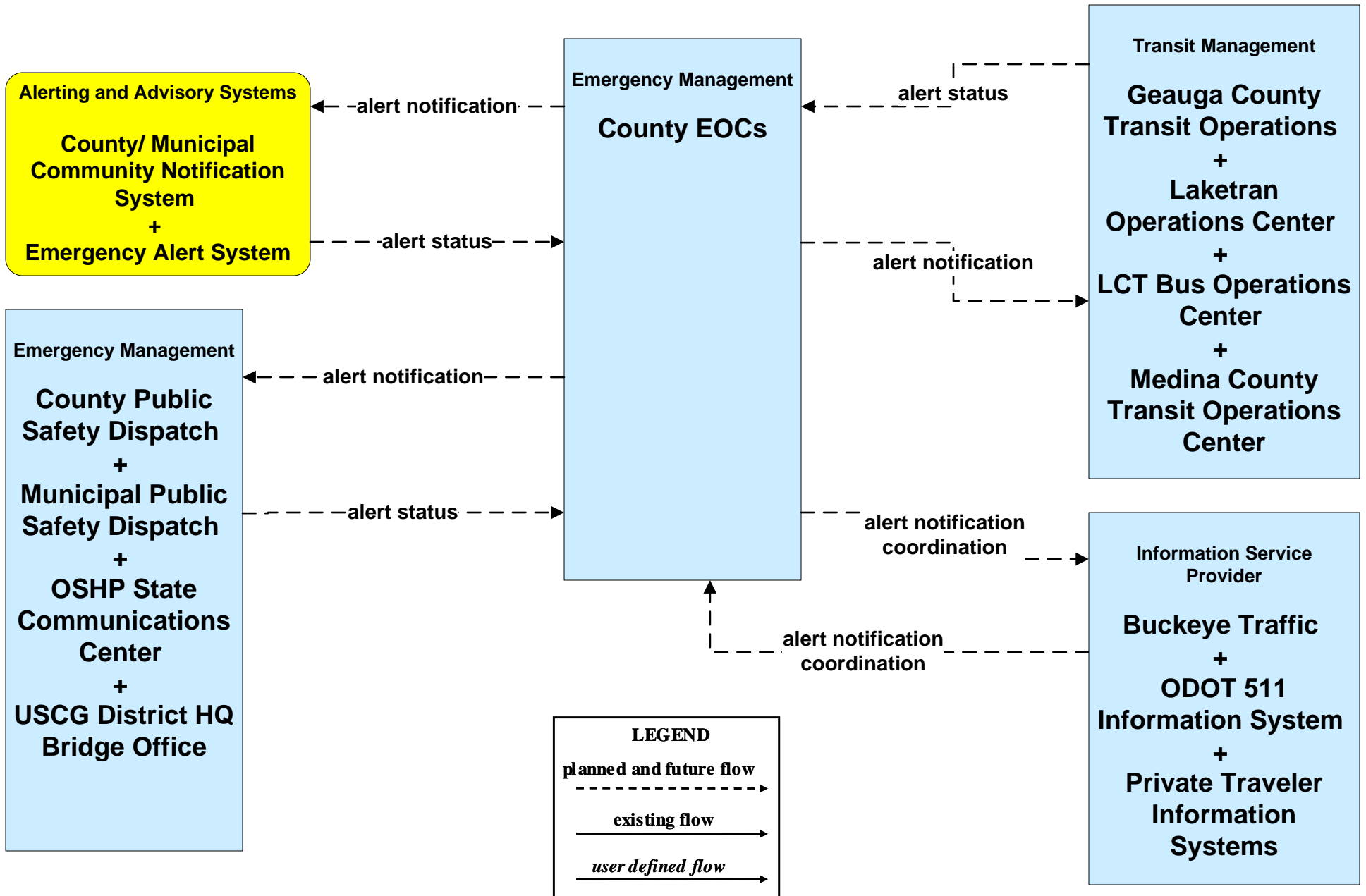


# ATMS06 - Traffic Information Dissemination Municipal Signal Control Systems

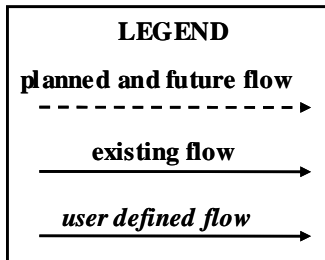
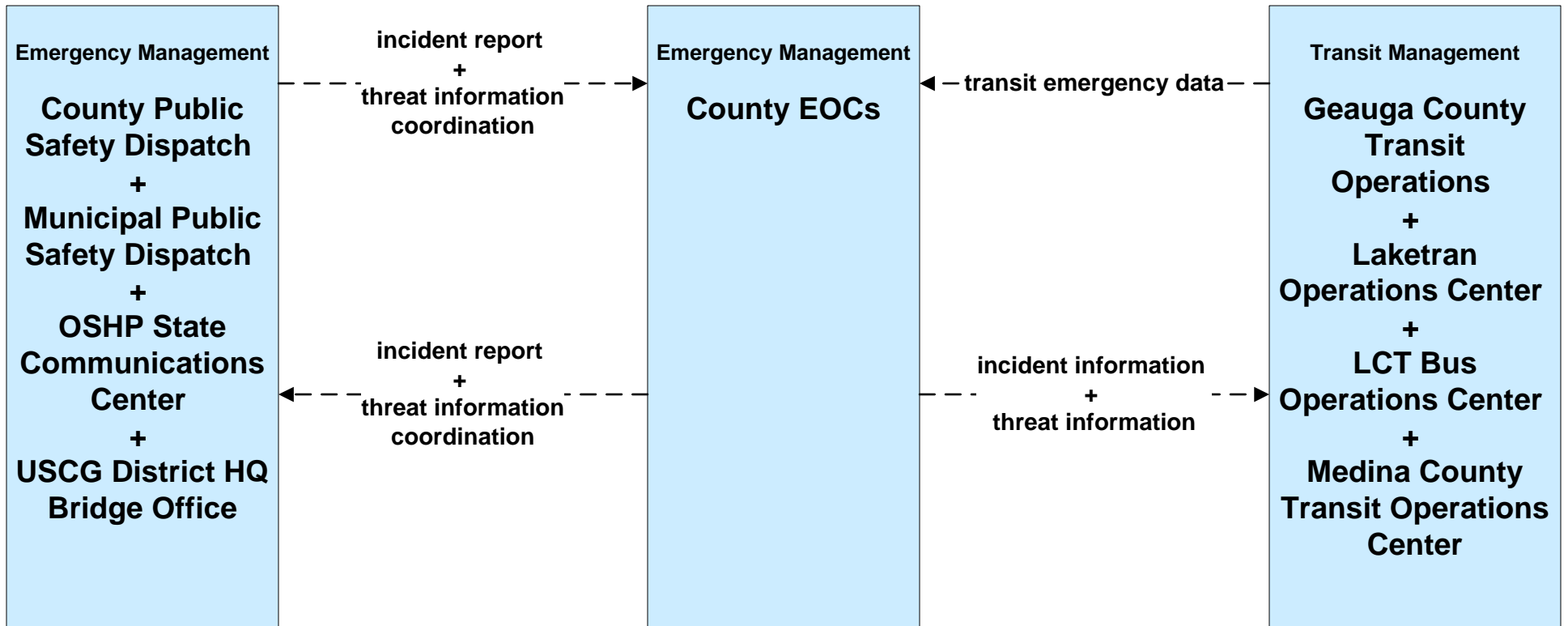




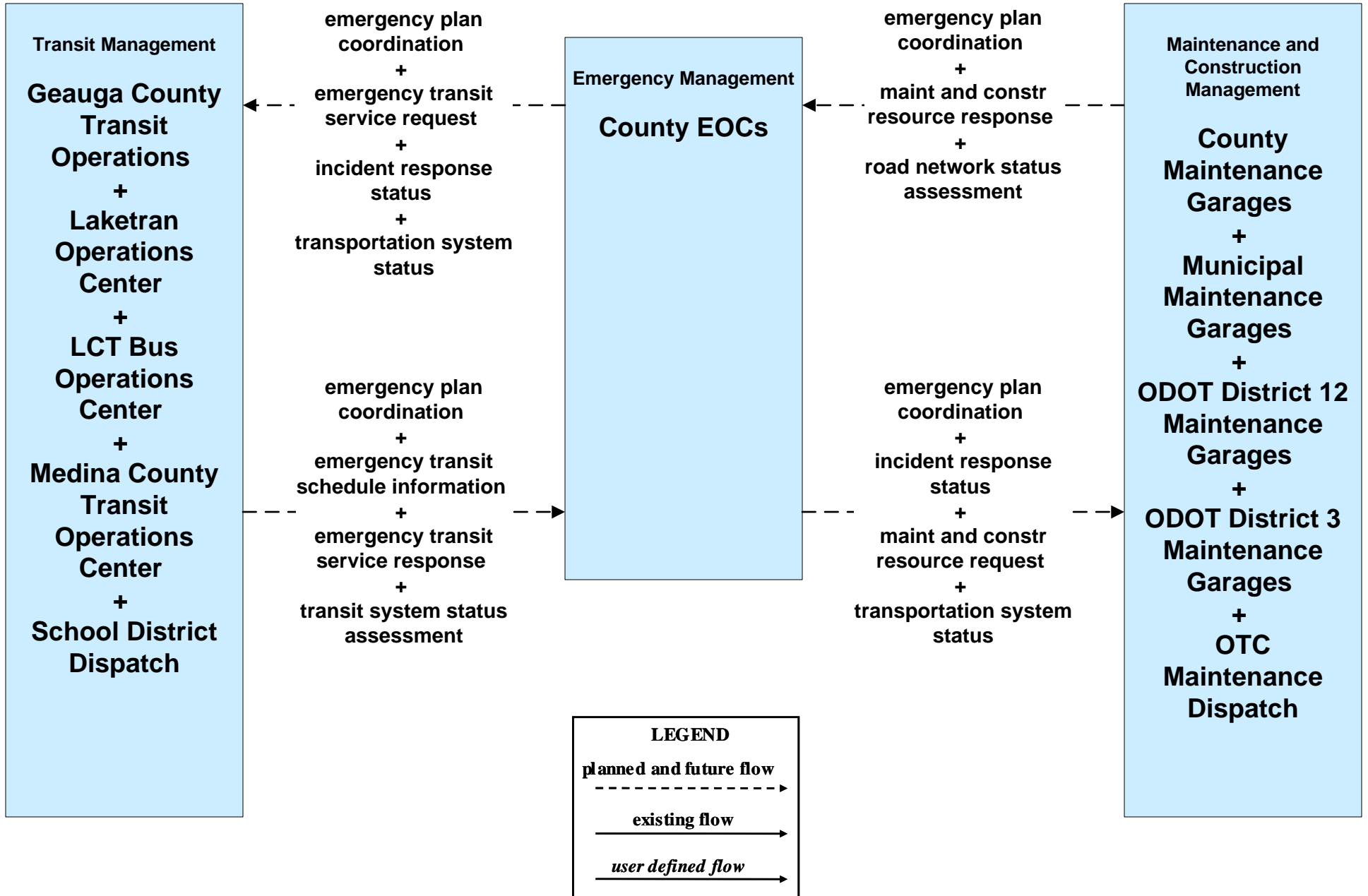
**EM06 - Wide Area Alerts  
County EOCs (1 of 2)**



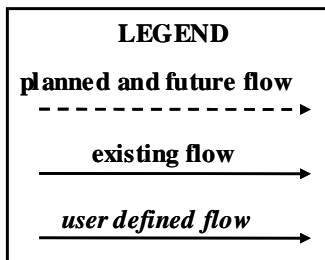
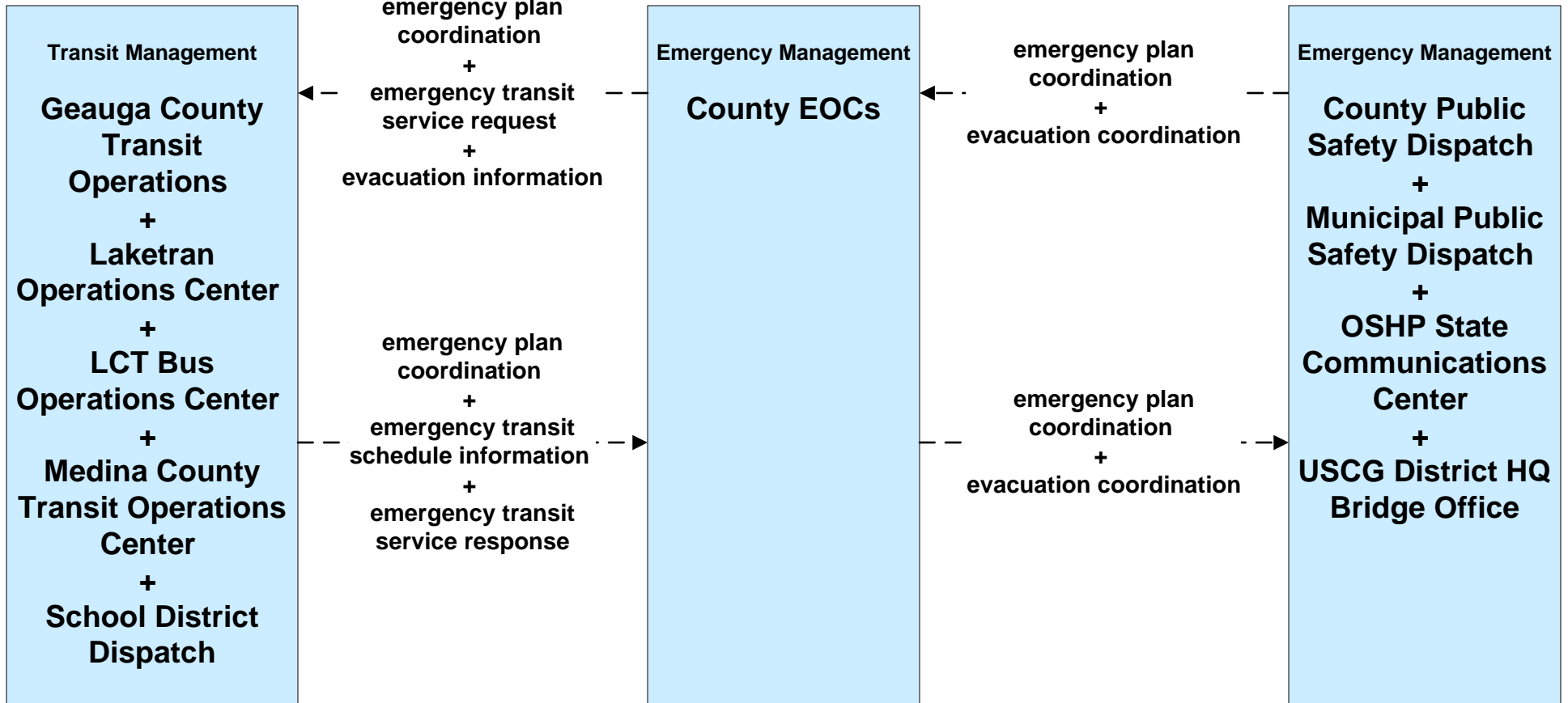
**EM07 - Early Warning System  
County EOCs (1 of 2)**



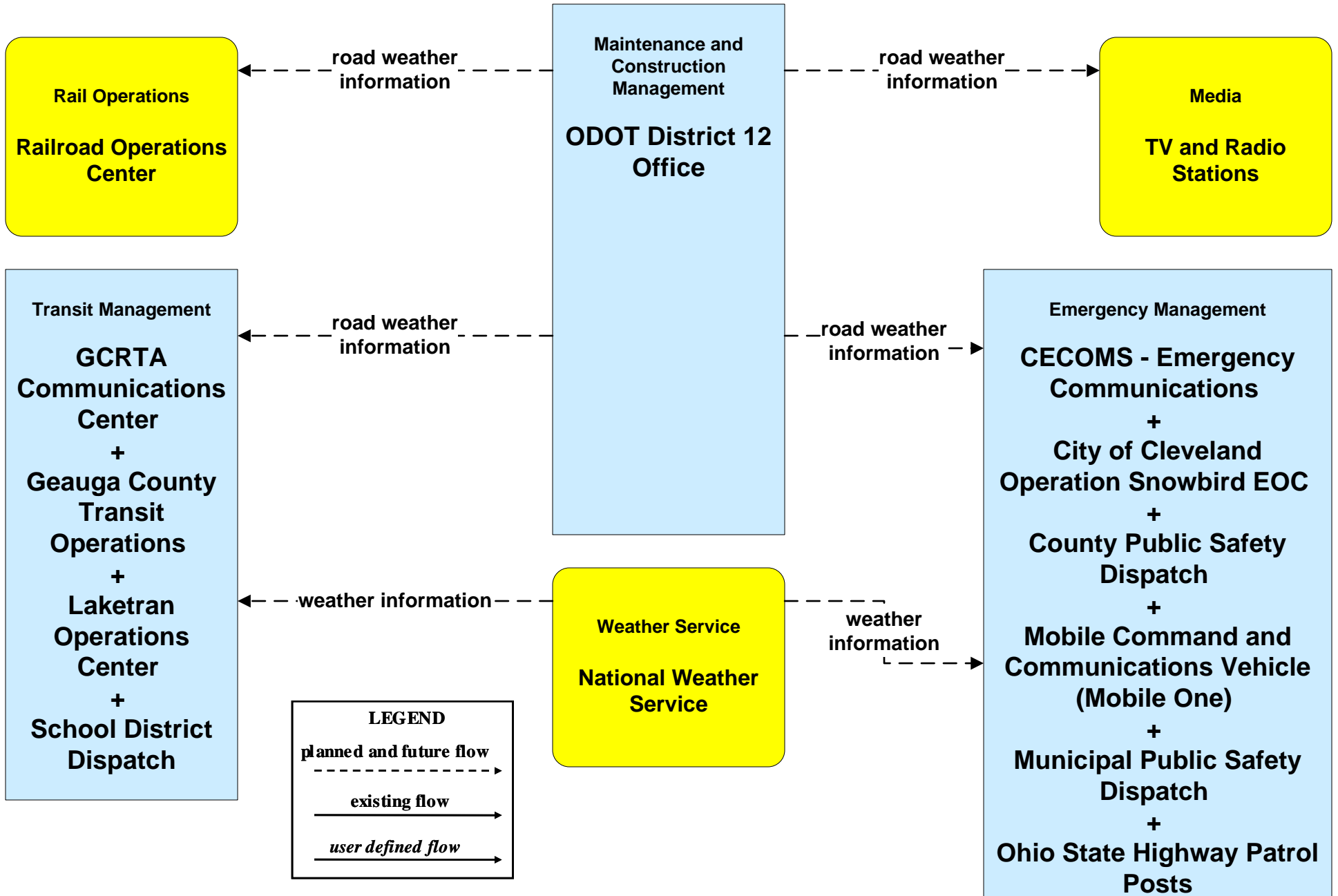
**EM08 - Disaster Response and Recovery  
County EOCs (2 of 2)**



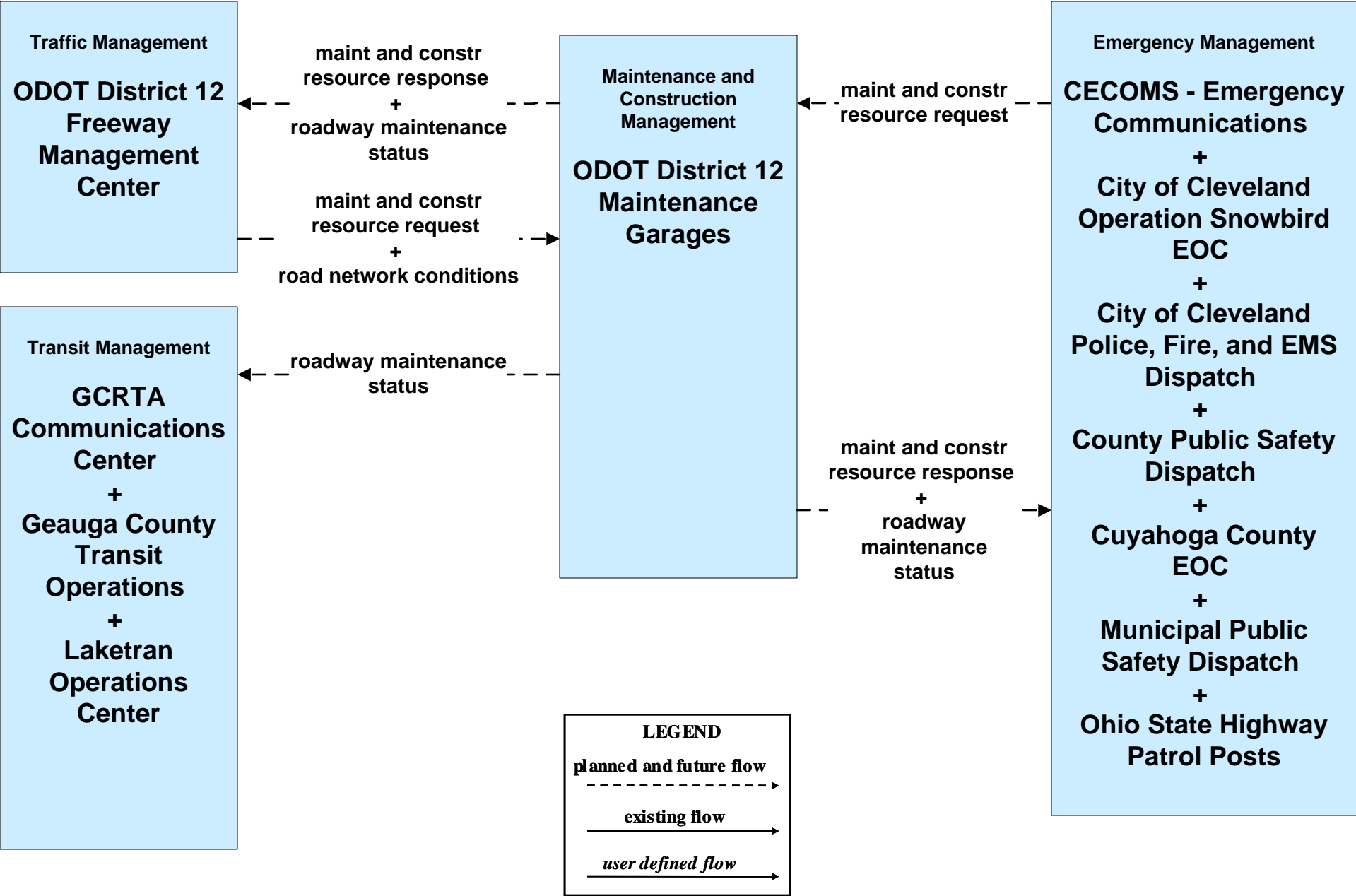
**EM09 - Evacuation and Reentry Management  
County EOCs (1 of 2)**



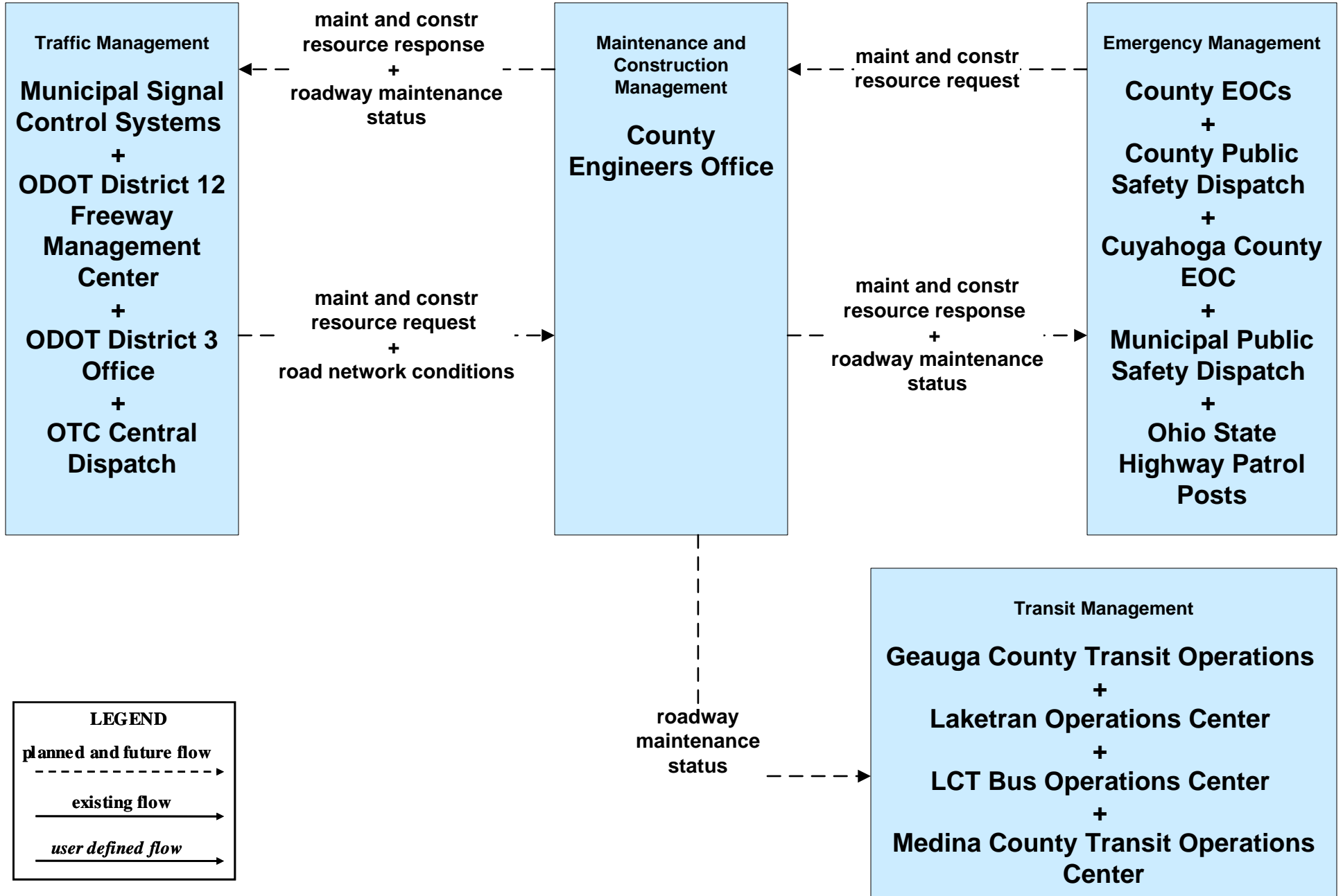
**MC04 - Weather Information Processing and Distribution  
ODOT District 12 (2 of 2)**



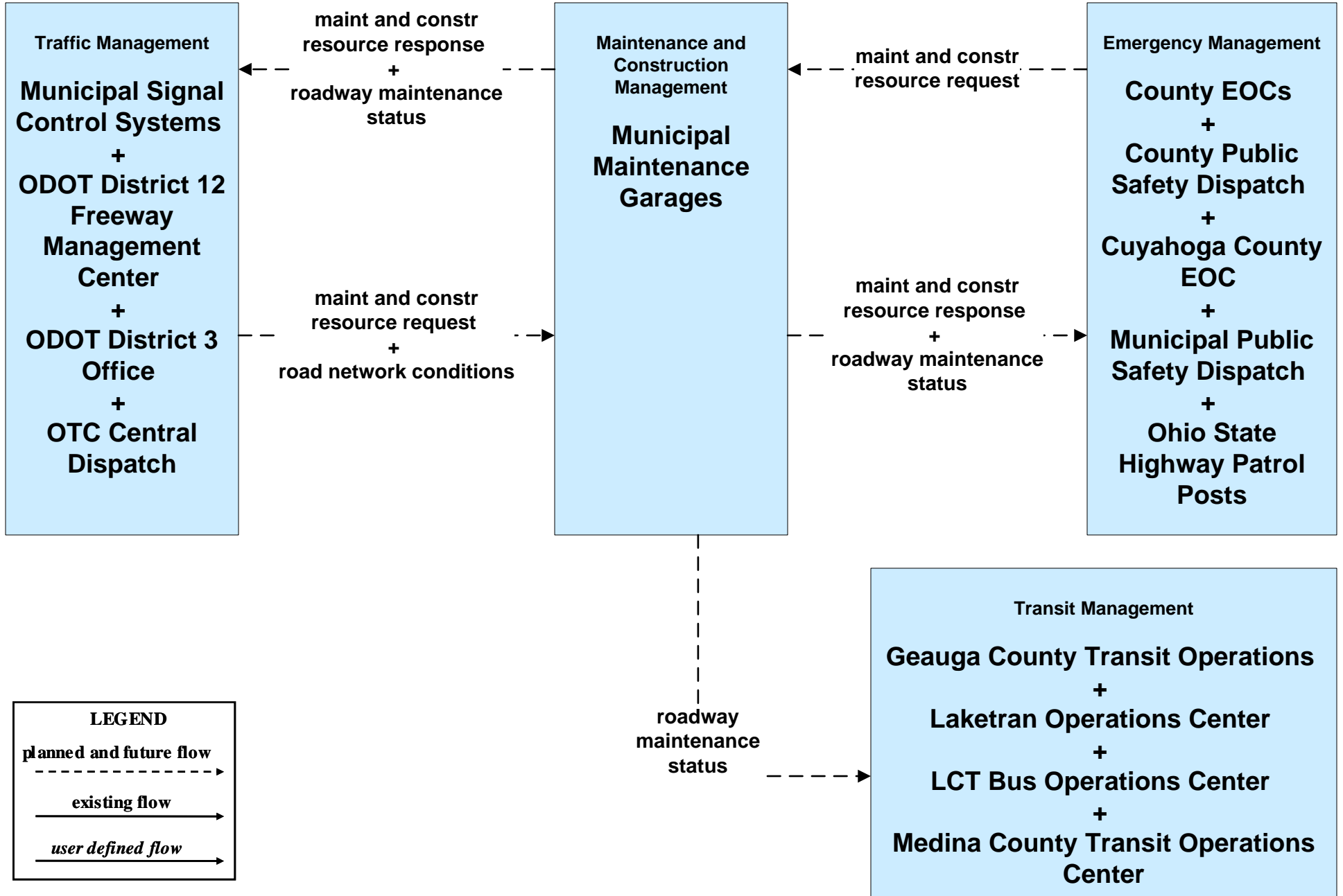
**MC06 - Winter Maintenance  
 ODOT District 12 Maintenance Garages (2 of 2)**



**MC06 - Winter Maintenance  
County Engineers Office (2 of 2)**

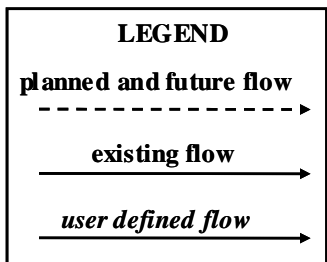
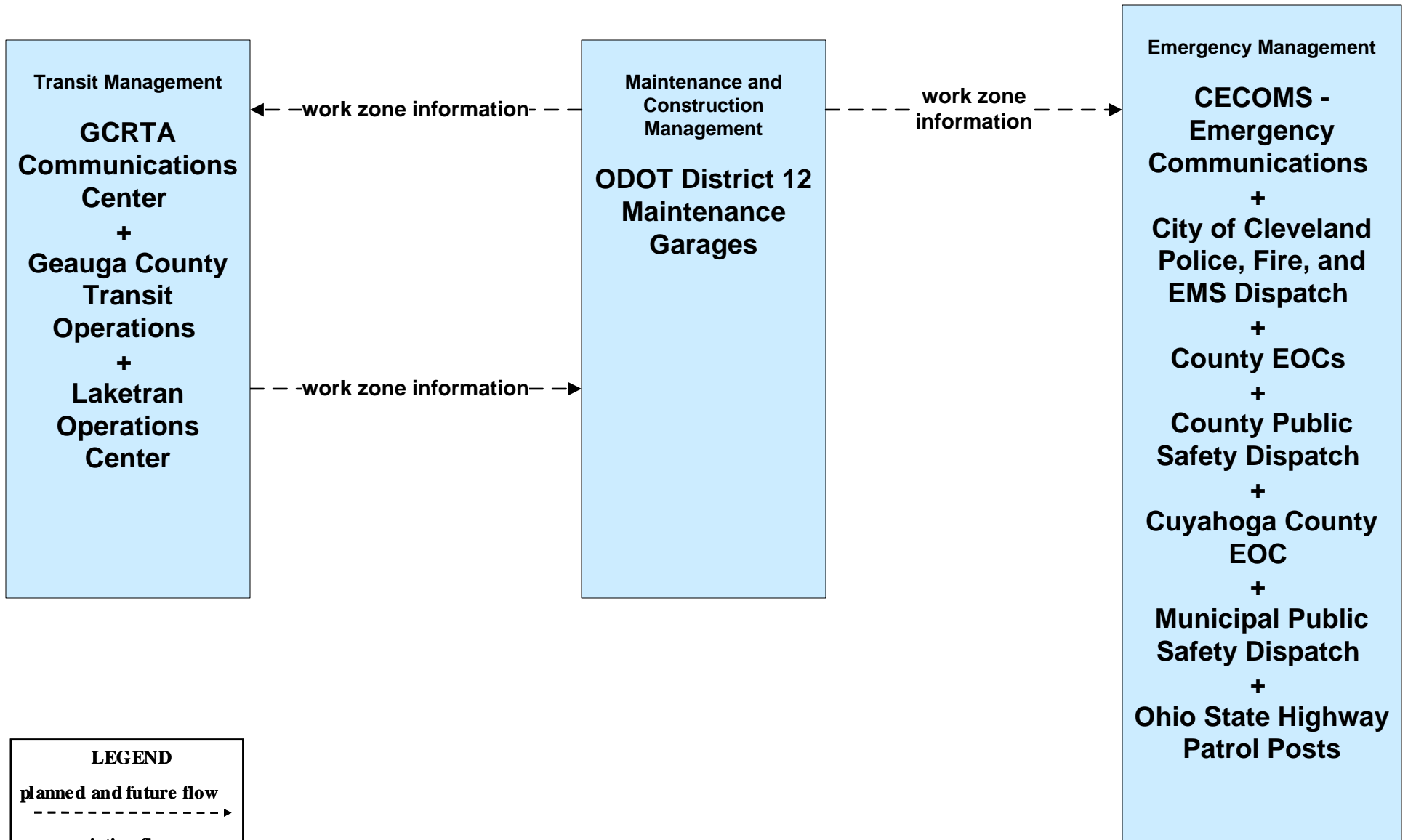


**MC06 - Winter Maintenance  
Municipal Maintenance Garages (2 of 2)**

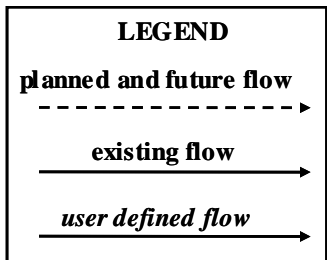
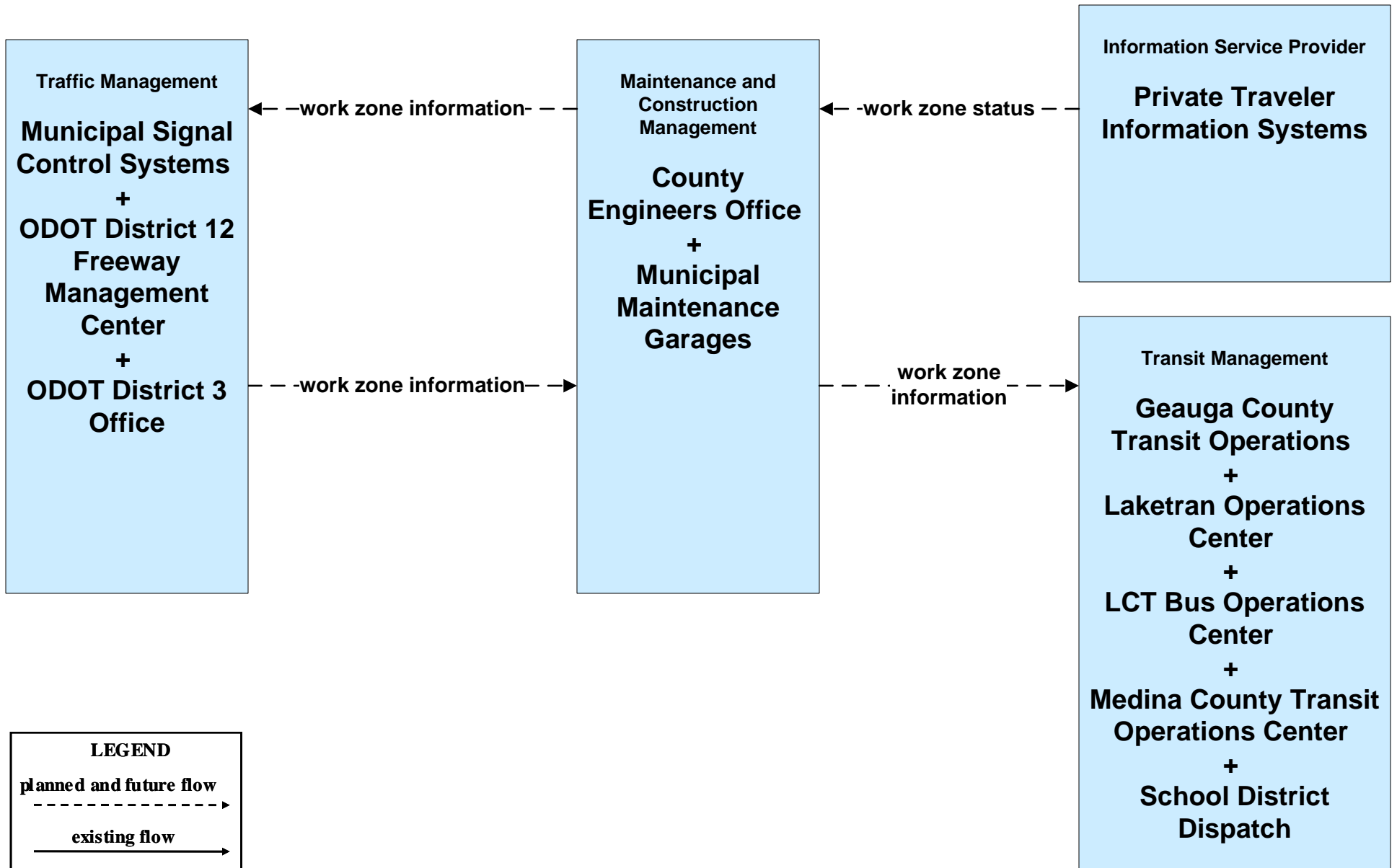




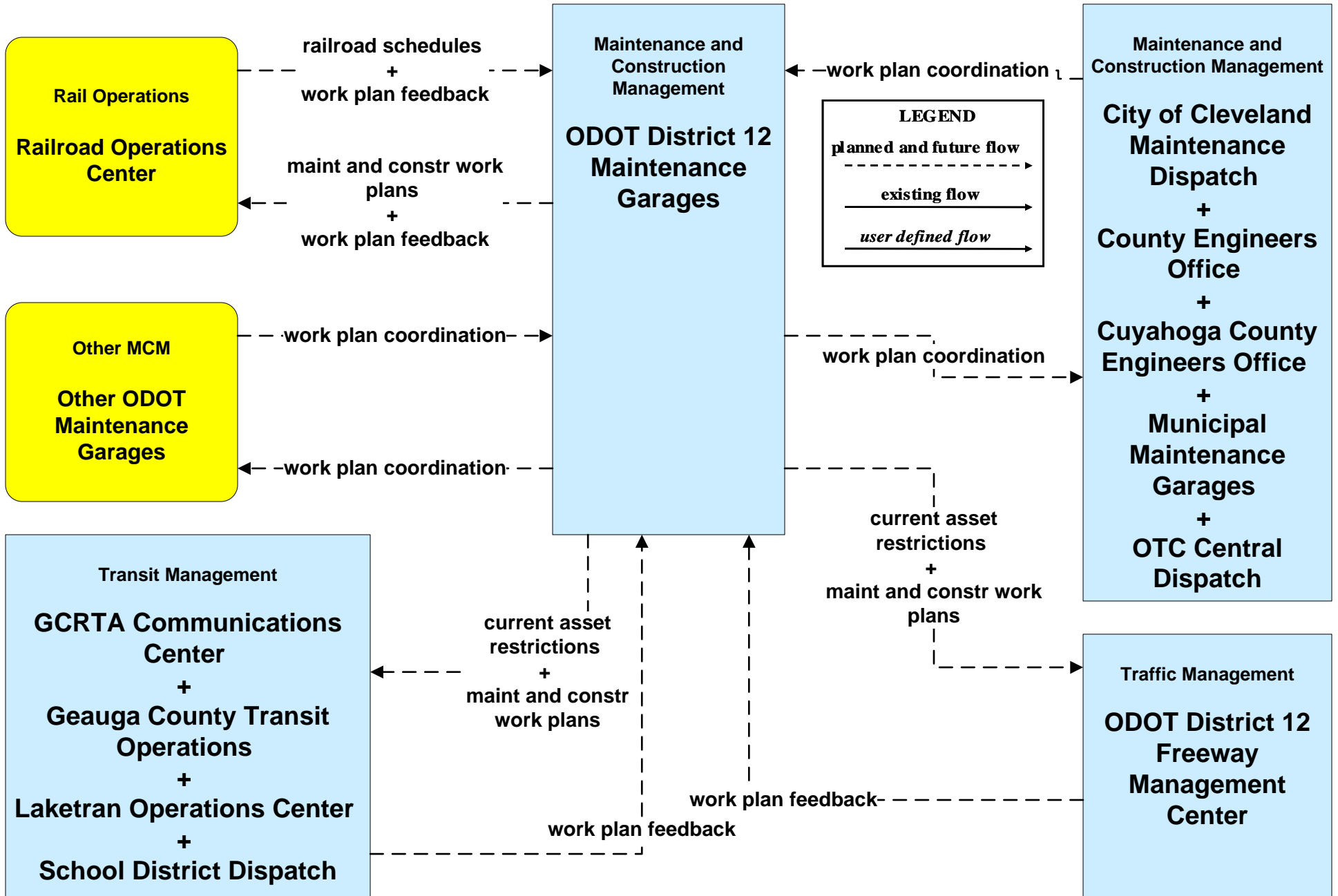
**MC08 - Workzone Management  
ODOT District 12 (2 of 2)**



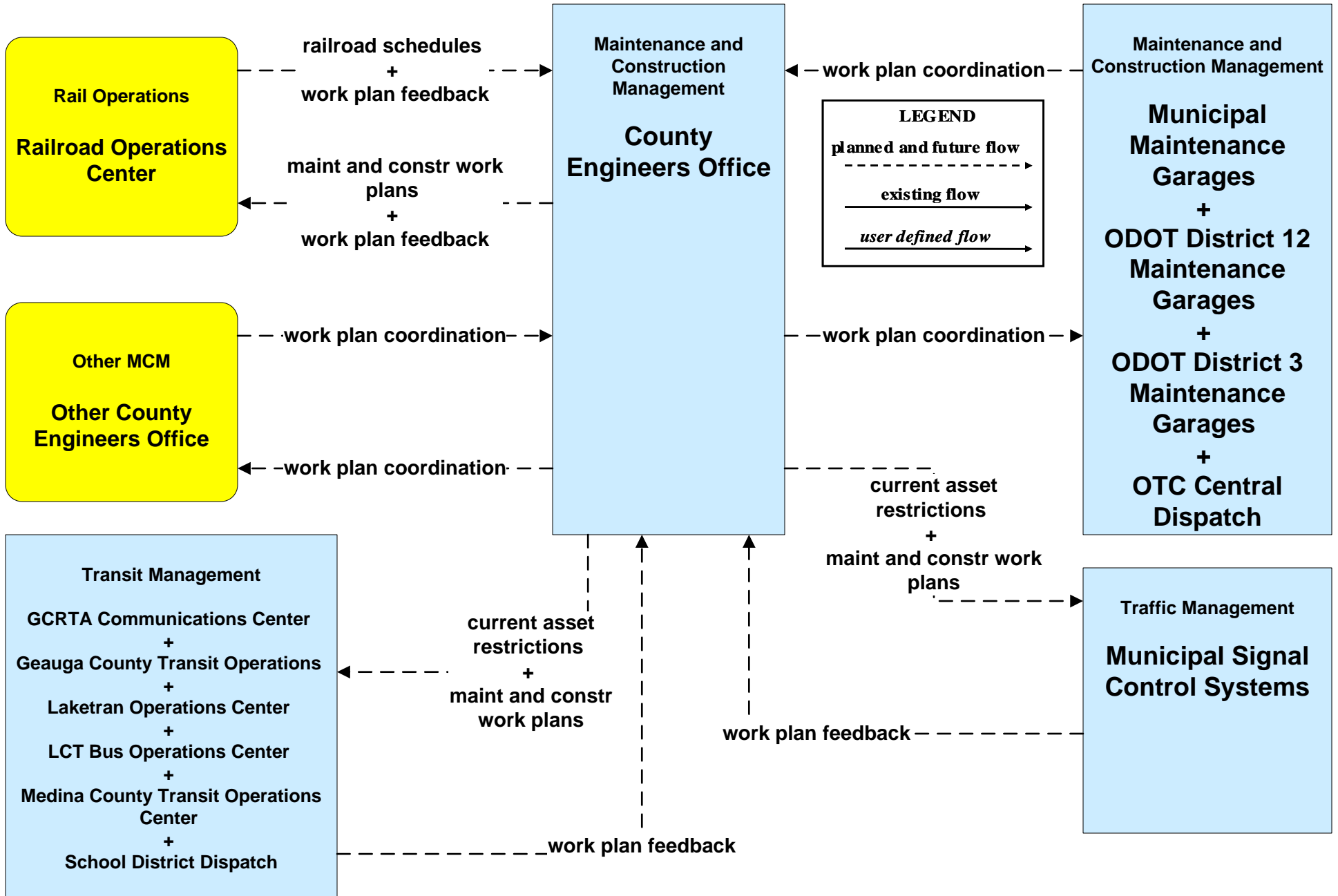
**MC08 - Workzone Management  
Municipal / County Maintenance Garages (2 of 2)**



**MC10 - Maintenance and Construction Activity Coordination  
ODOT District 12 Maintenance Garages**



# MC10 - Maintenance and Construction Activity Coordination County Engineers Office



# MC10 - Maintenance and Construction Activity Coordination Municipal Maintenance Garages

