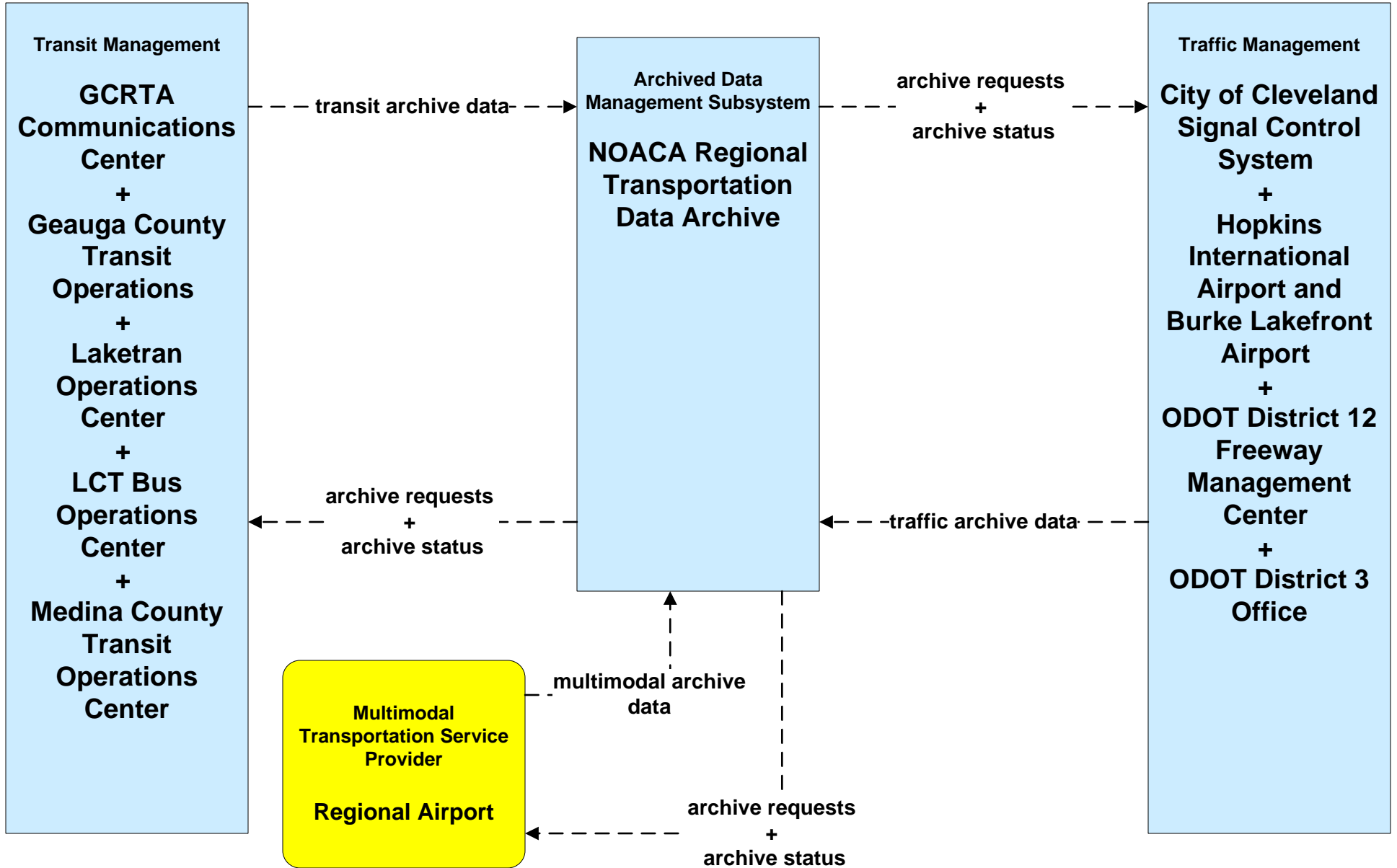
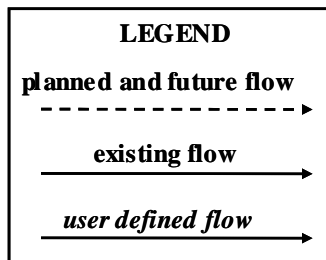
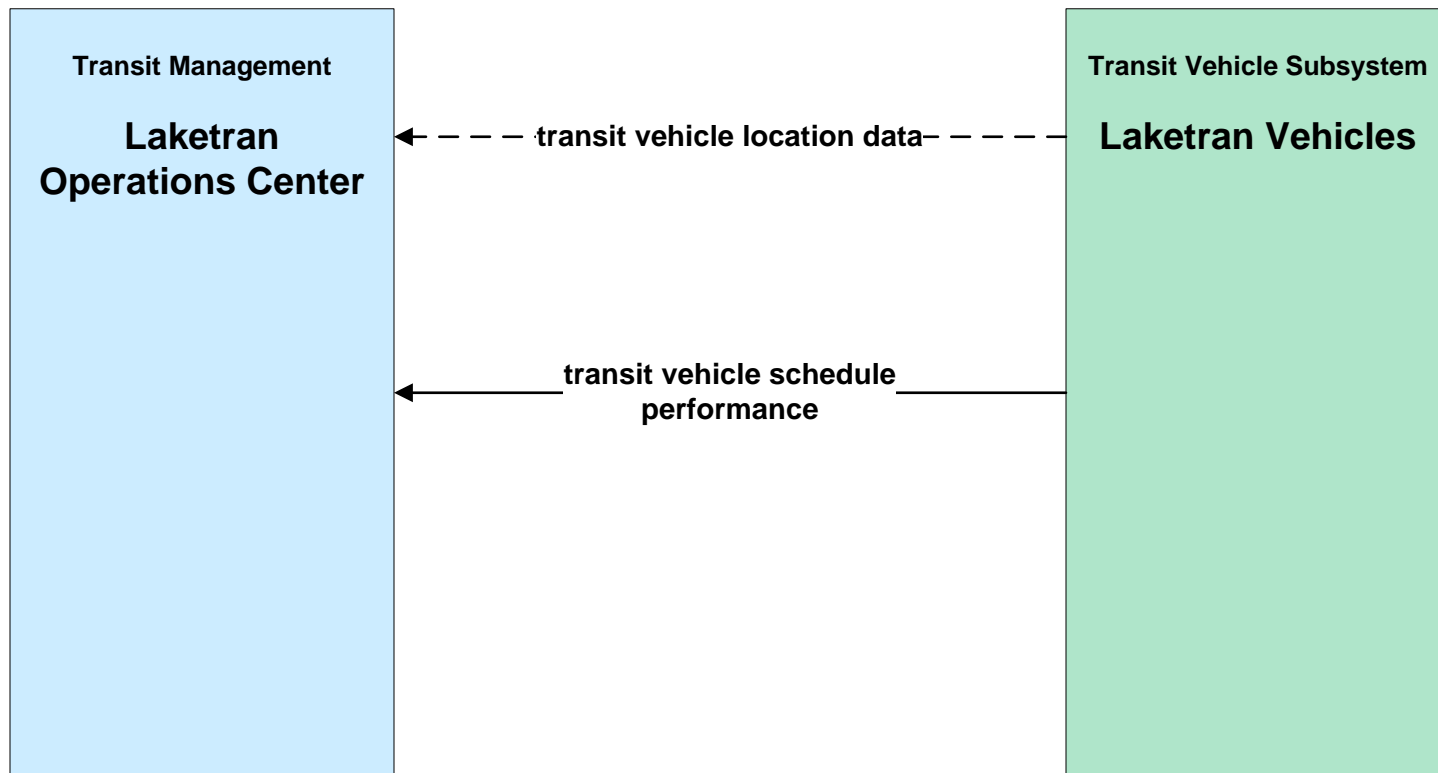


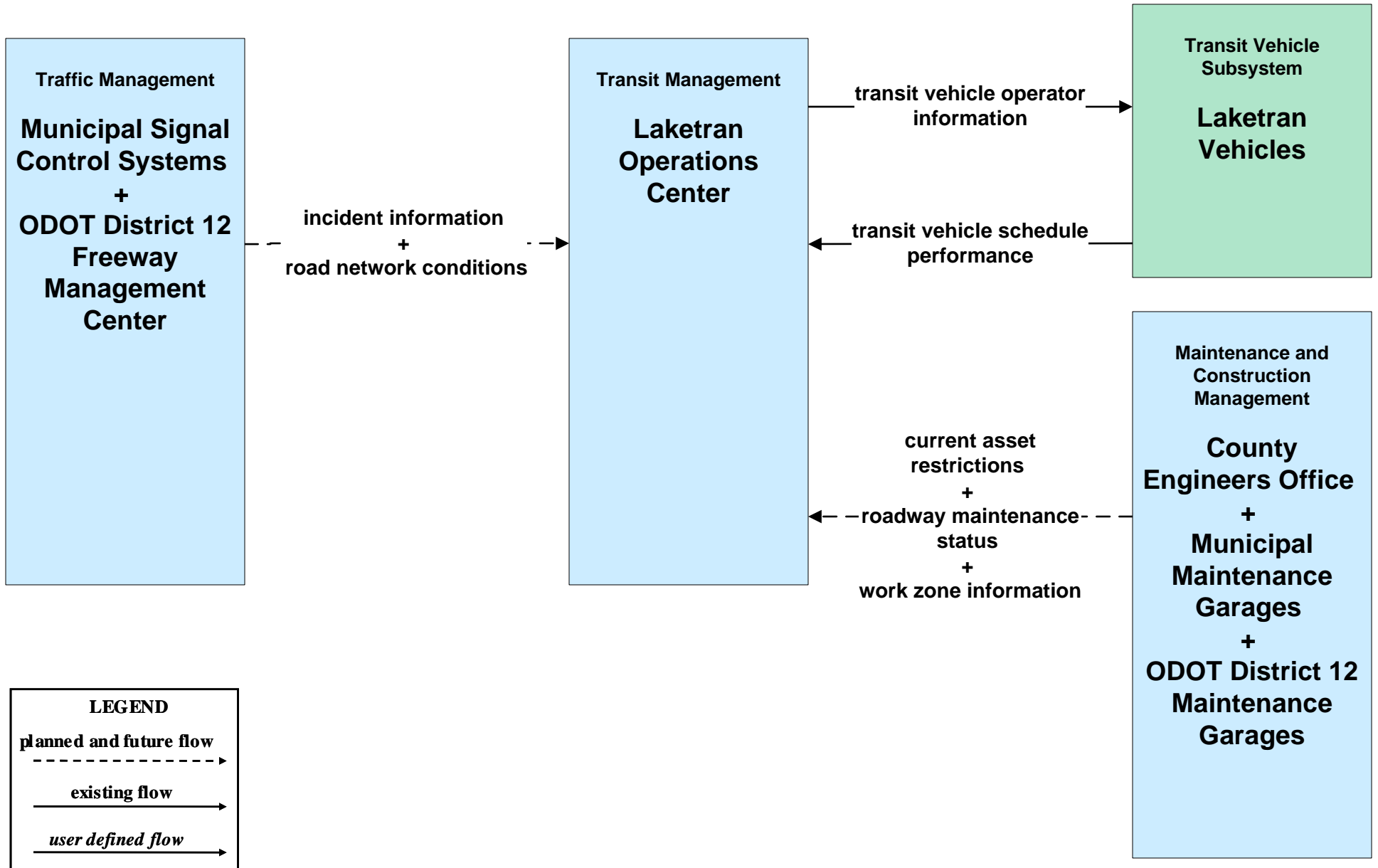
**AD2 - ITS Data Warehouse  
NOACA Regional Transportation Data Archive**



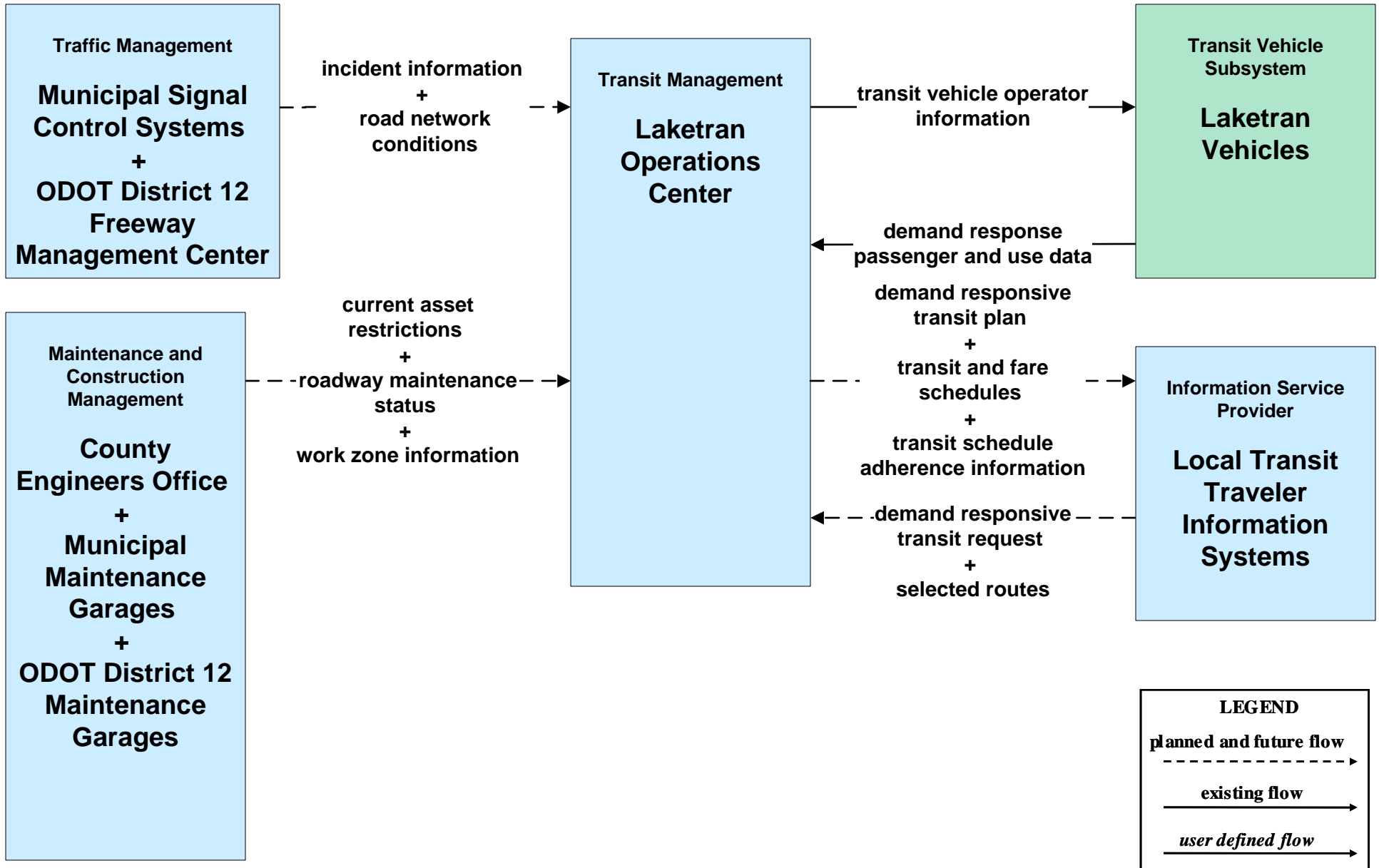
# APTS01 - Transit Vehicle Tracking Laketran



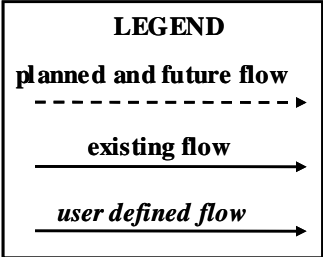
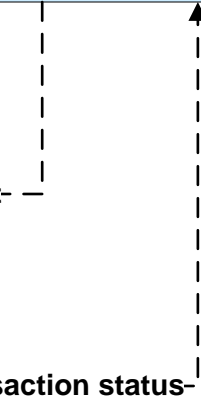
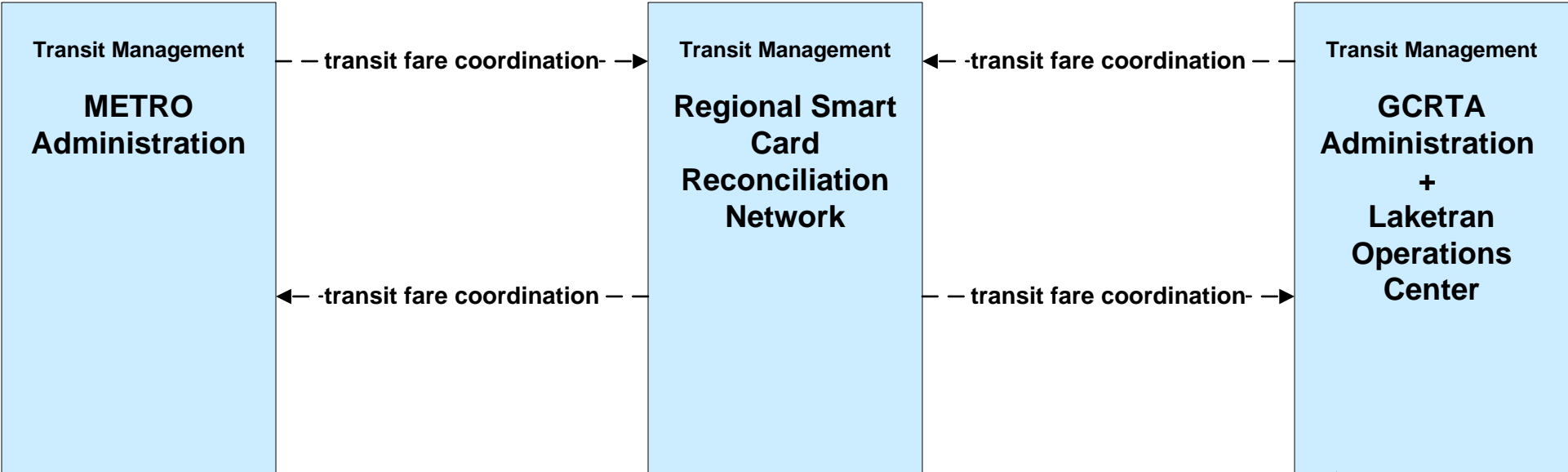
**APTS02 - Transit Fixed-Route Operations  
Laketran**



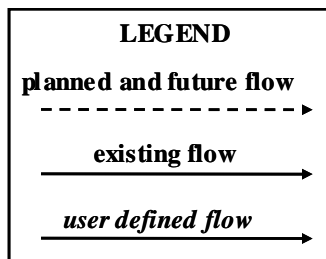
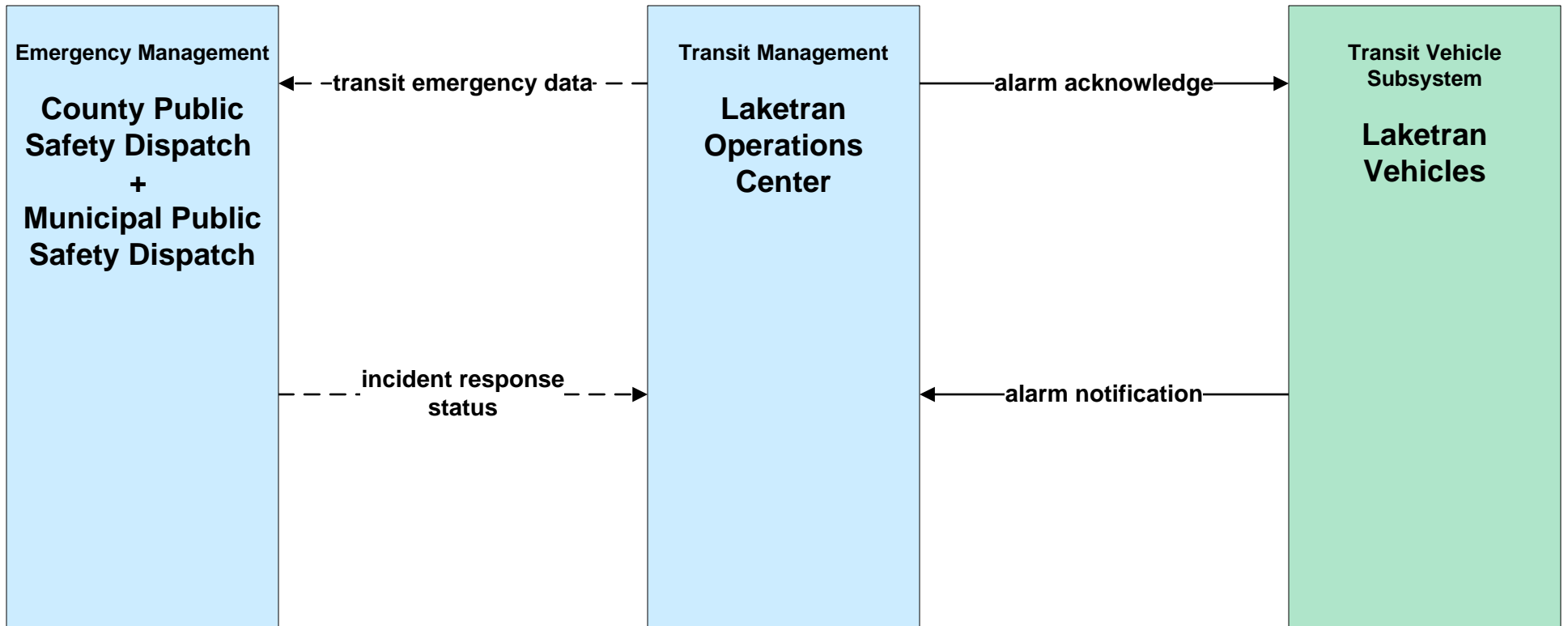
**APTS03 - Demand Response Transit Operations  
Laketran**



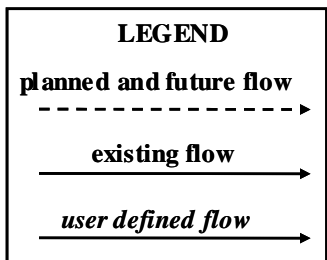
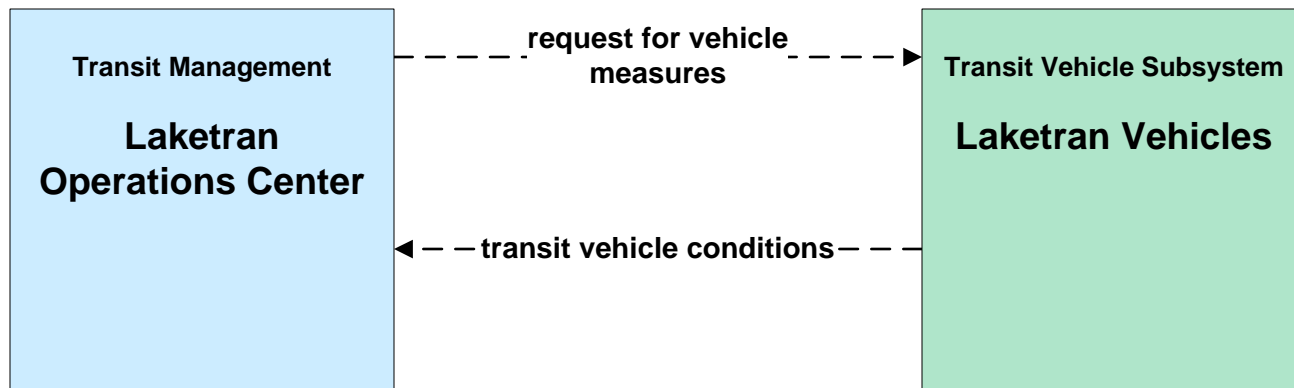
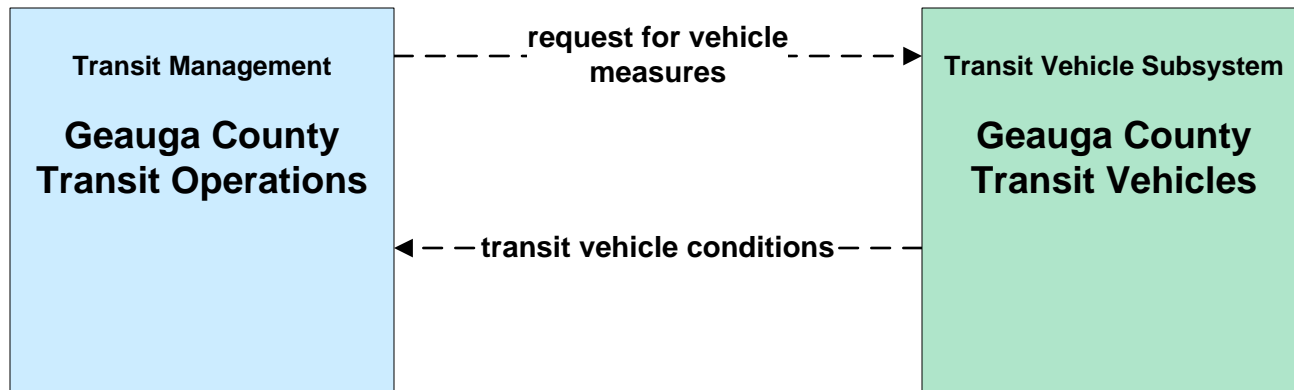
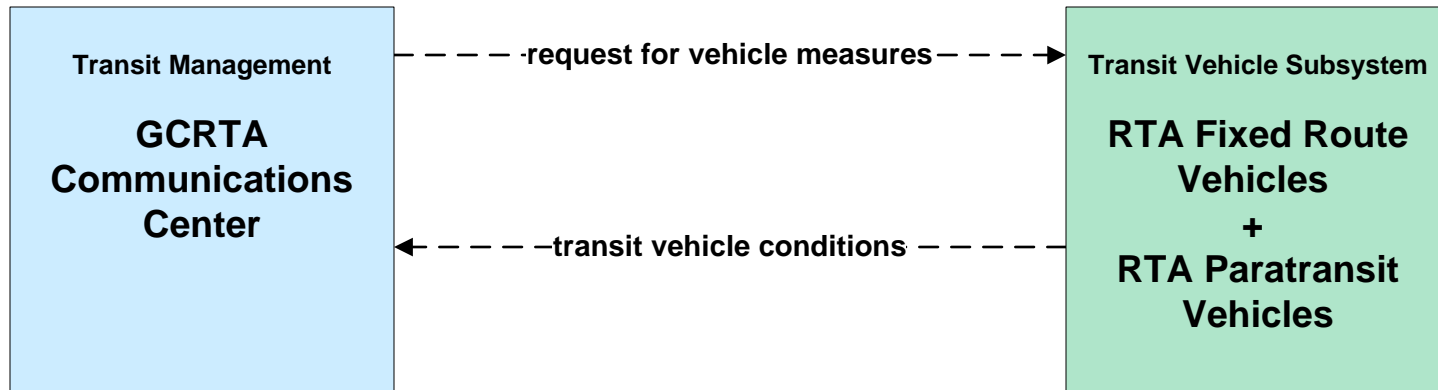
**APTS04 - Transit Passenger and Fare Payment  
Regional Fare Reconciliation**



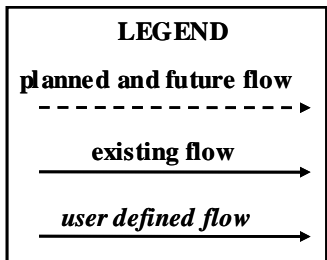
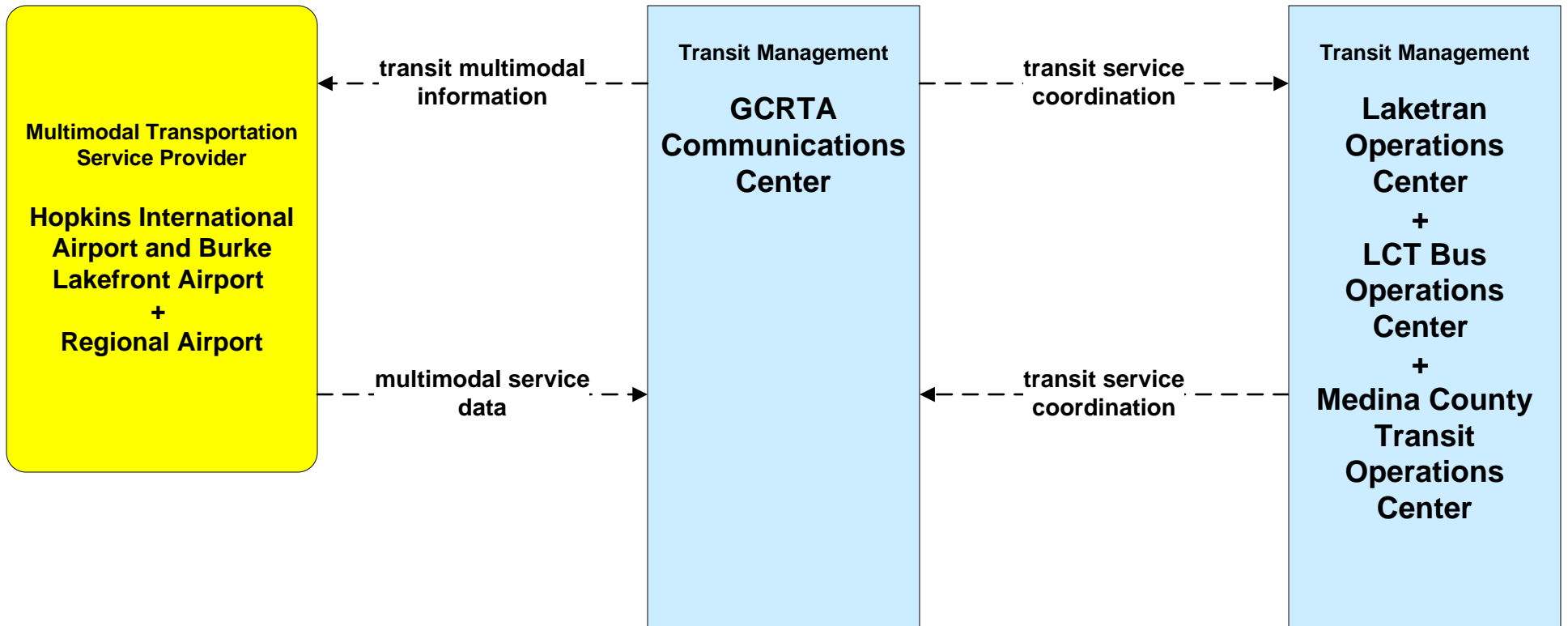
# APTS05 - Transit Security Laketran



**APTS06 - Transit Vehicle Maintenance  
GCRTA / Geauga County / Laketran**

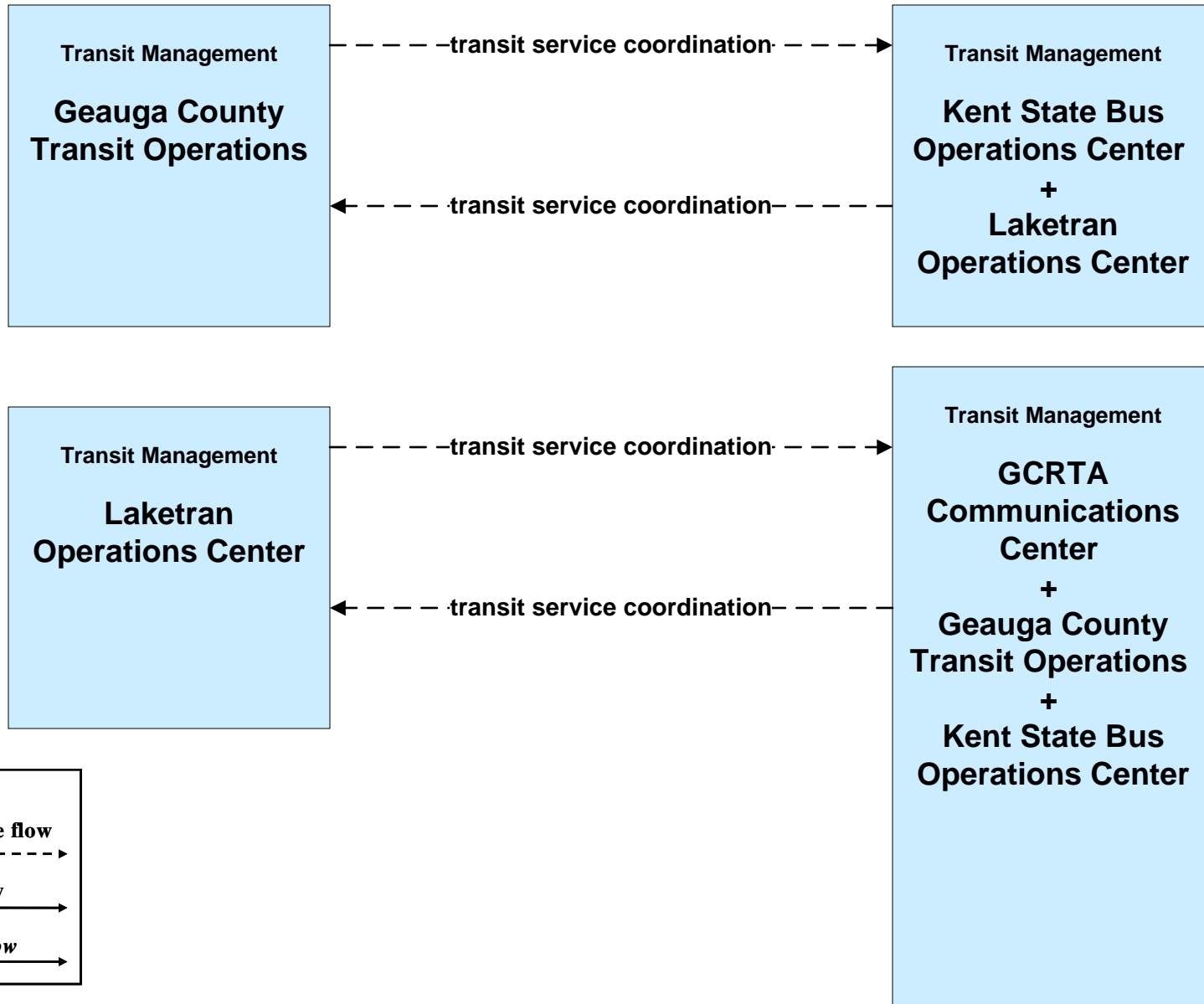


**APTS07 - Multimodal Coordination  
GCRTA**

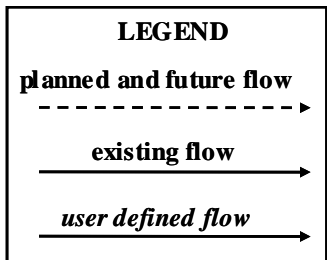
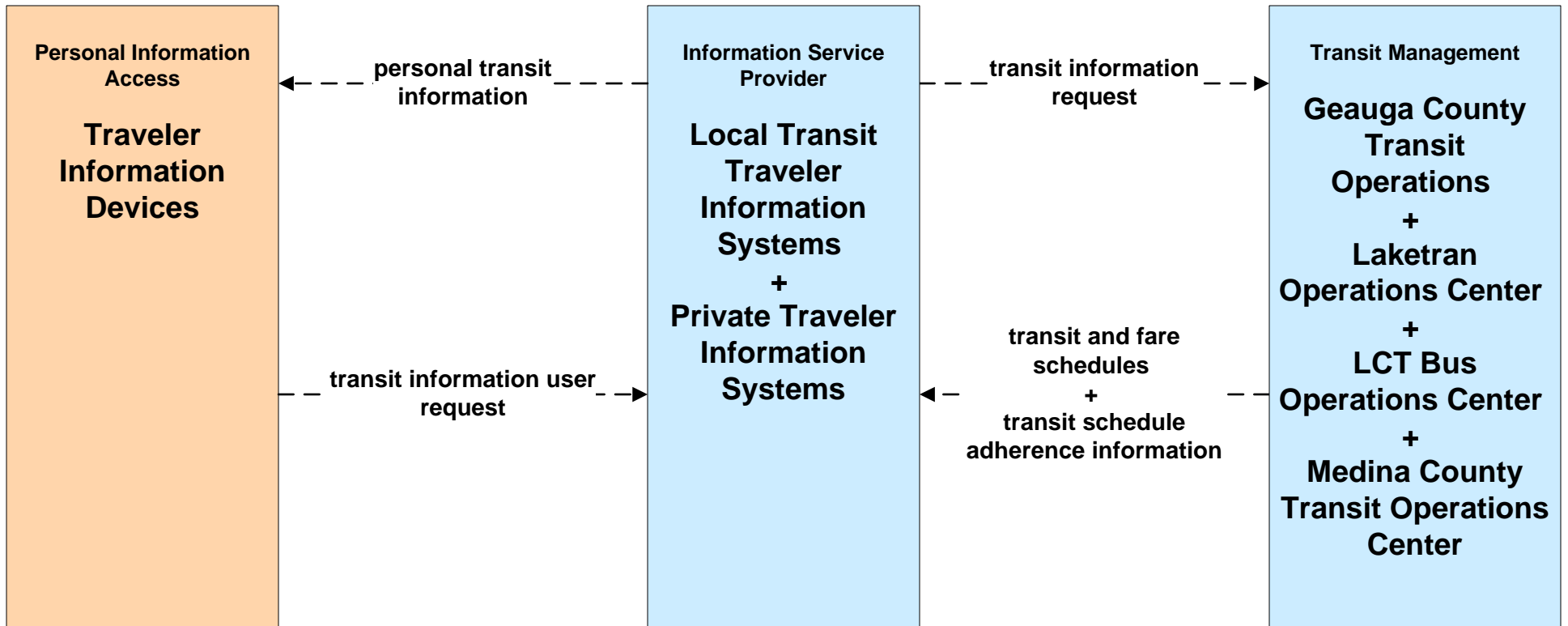




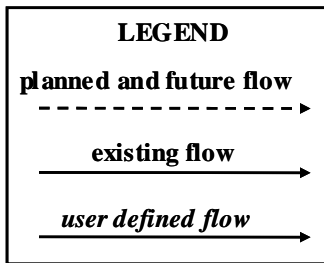
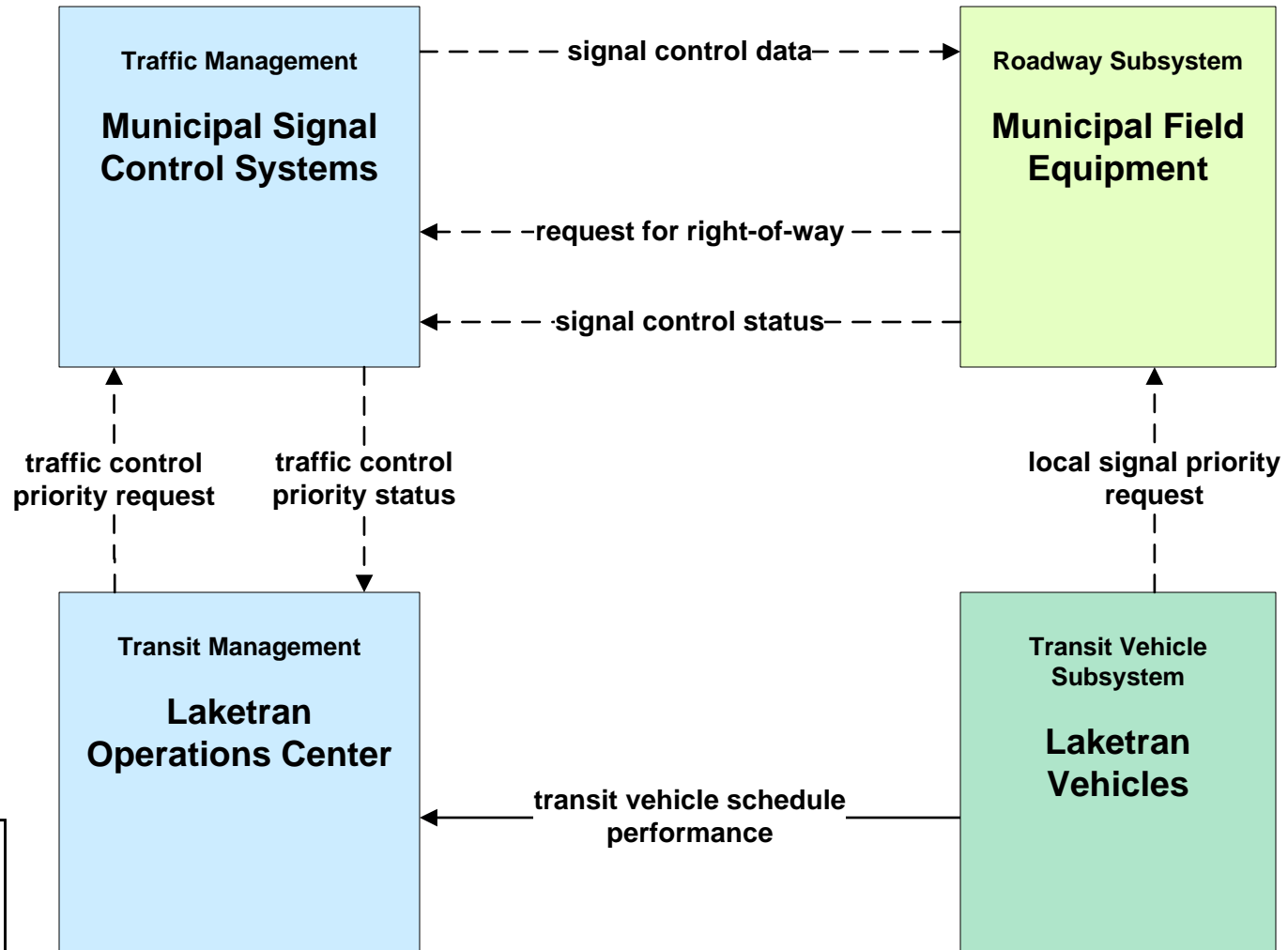
**APTS07 - Multimodal Coordination  
Geauga County / Laketrans**



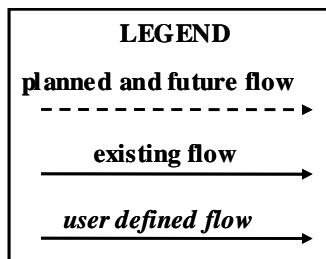
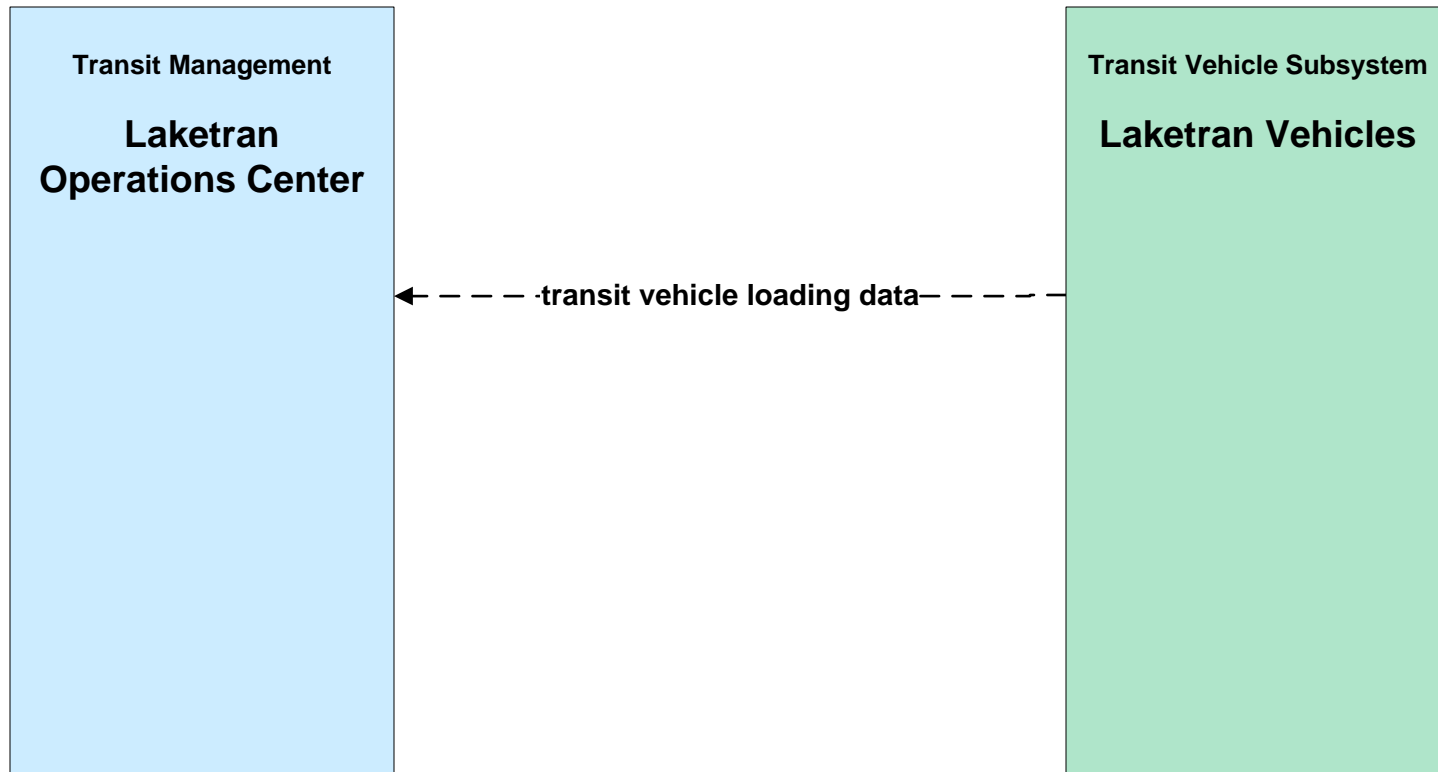
**APTS08 - Transit Traveler Information  
Local Transit Traveler Information Systems**



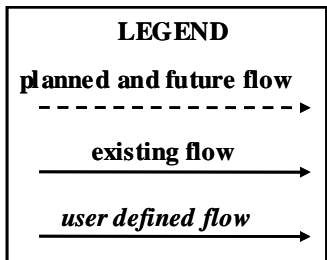
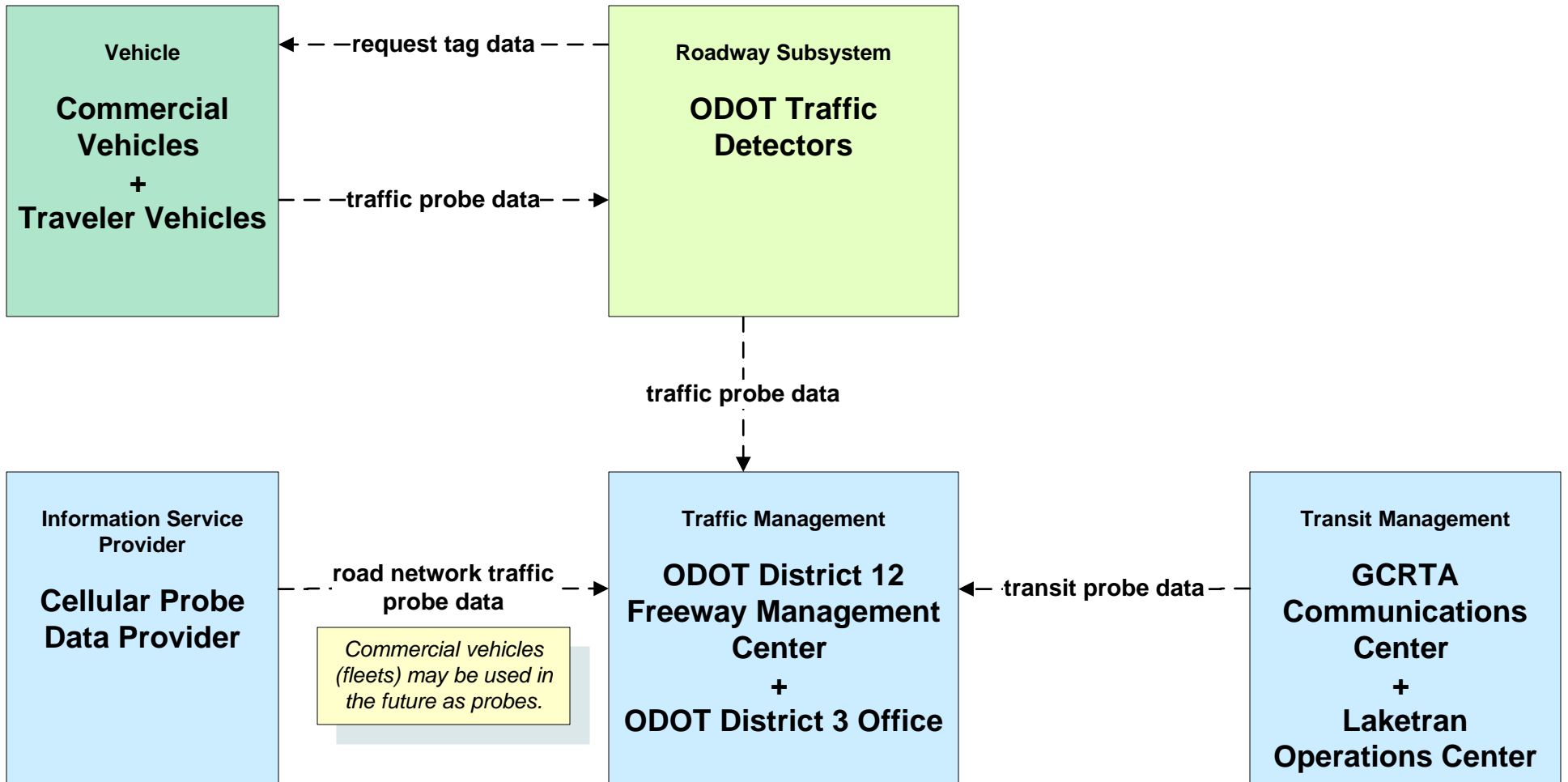
# APTS09 - Traffic Signal Priority Laketrans



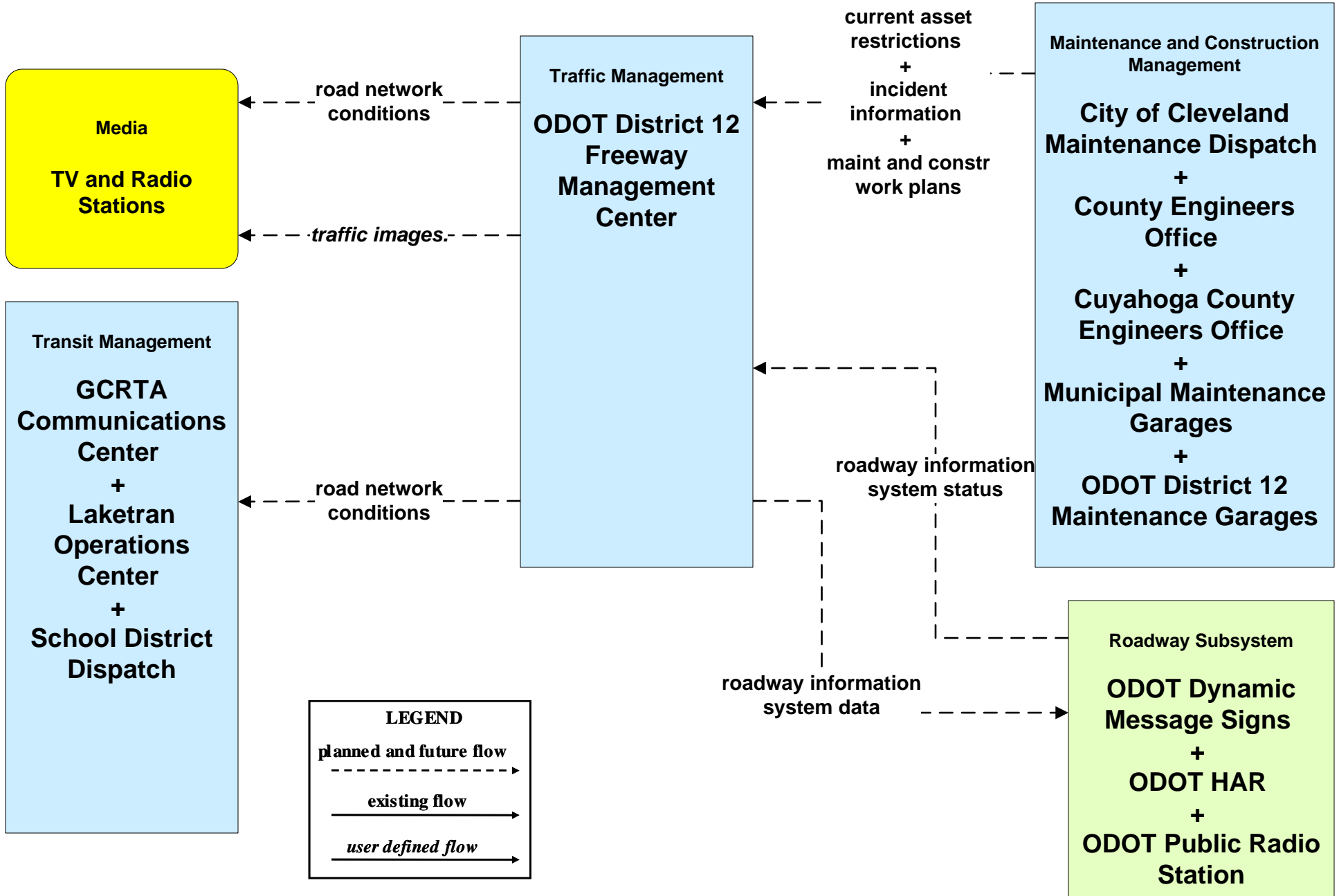
# APTS10 – Transit Passenger Counting Laketran



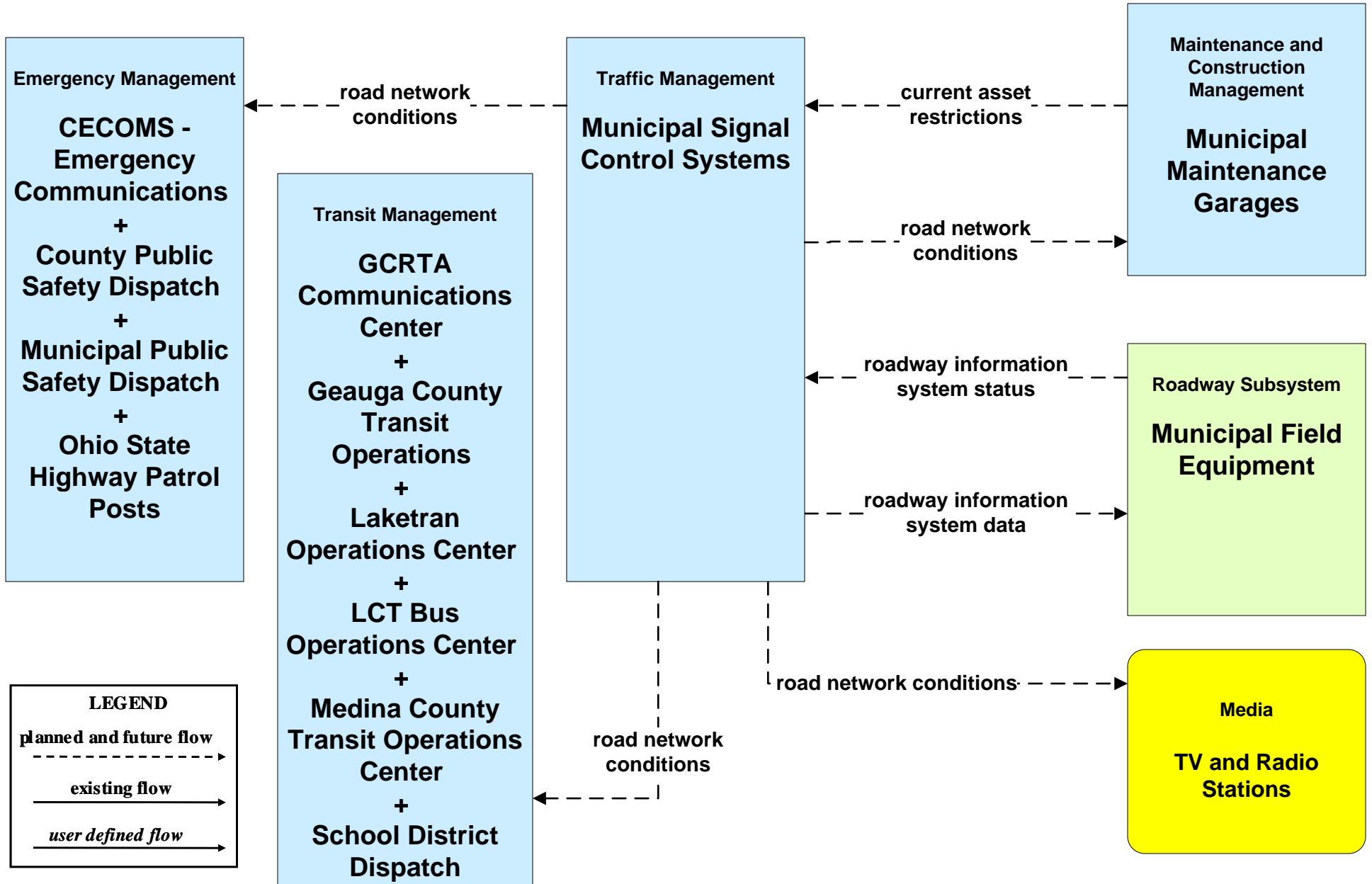
# ATMS02 - Probe Surveillance ODOT Probe System



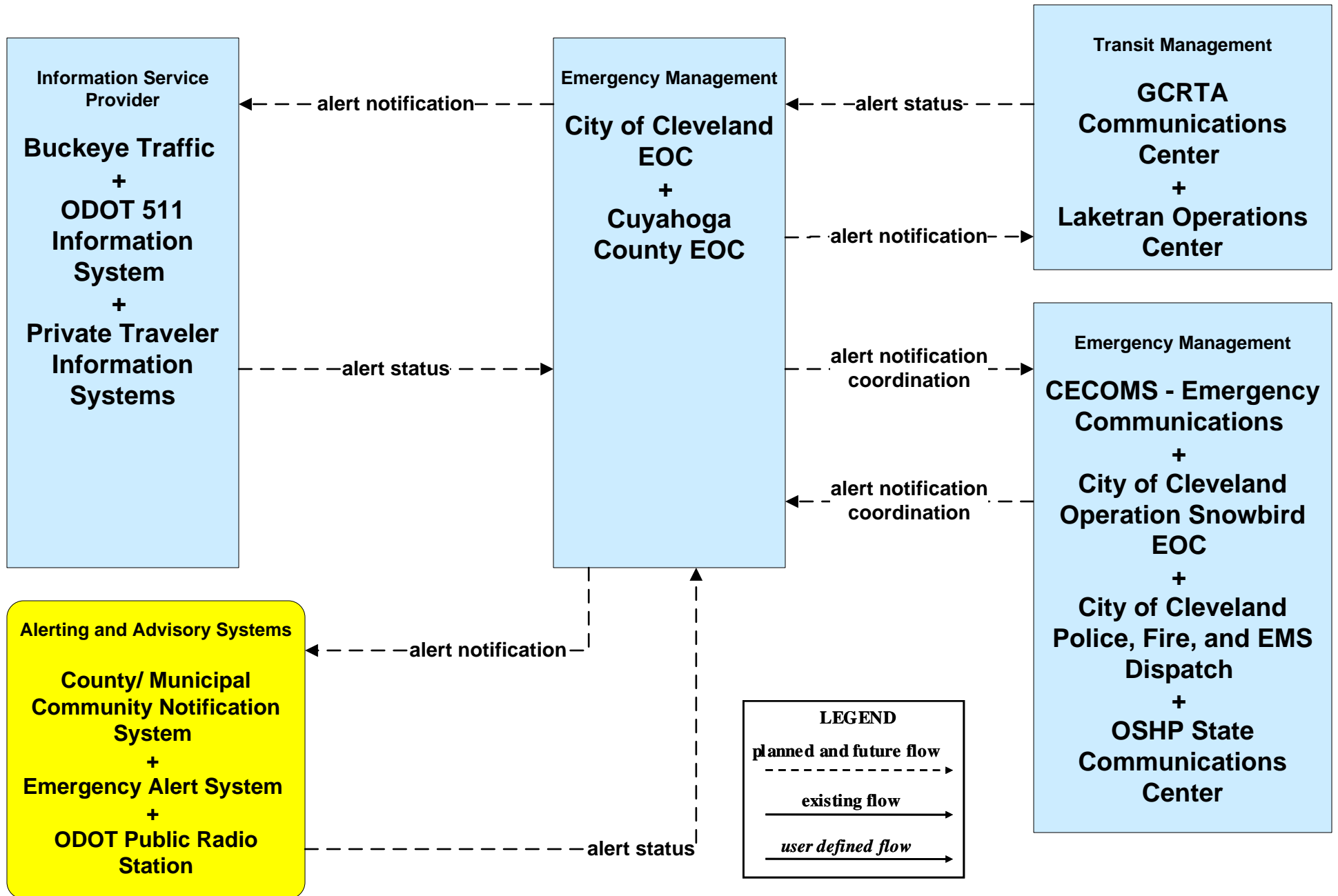
**ATMS06 - Traffic Information Dissemination  
ODOT District 12 (1 of 2)**



# ATMS06 - Traffic Information Dissemination Municipal Signal Control Systems

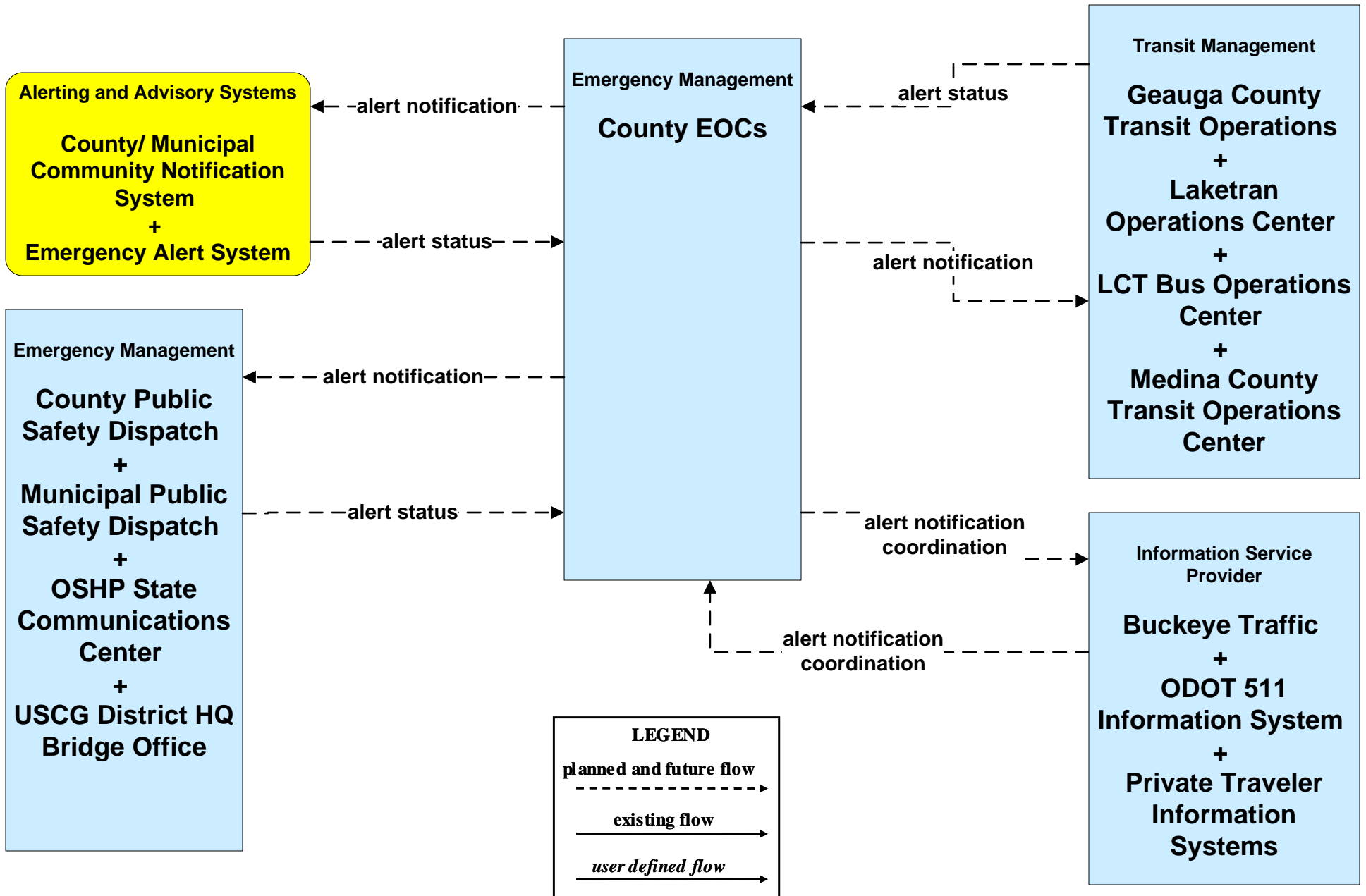


**EM06 - Wide Area Alerts**  
**City of Cleveland / Cuyahoga County EOC (1 of 3)**

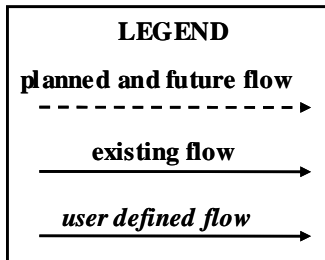
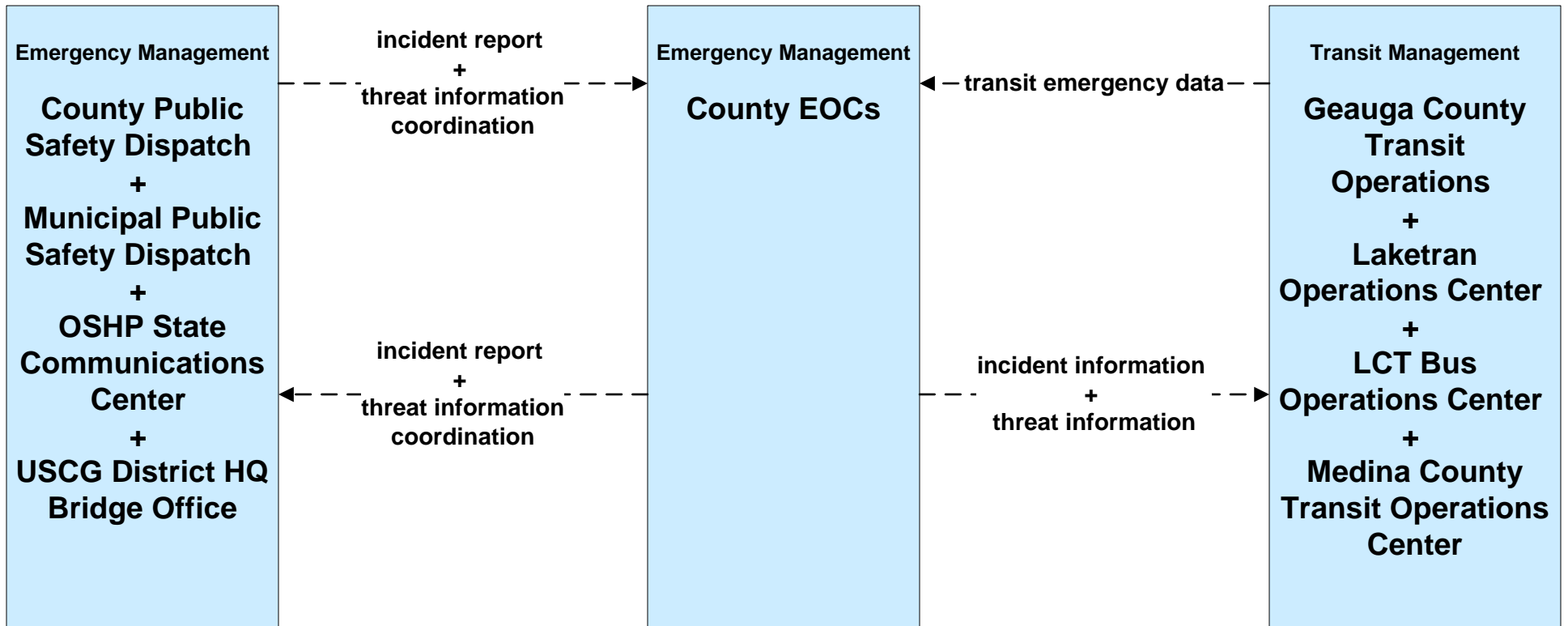




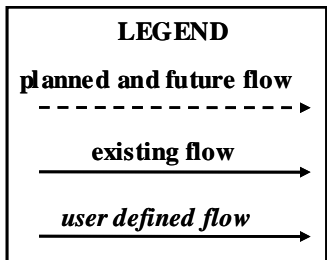
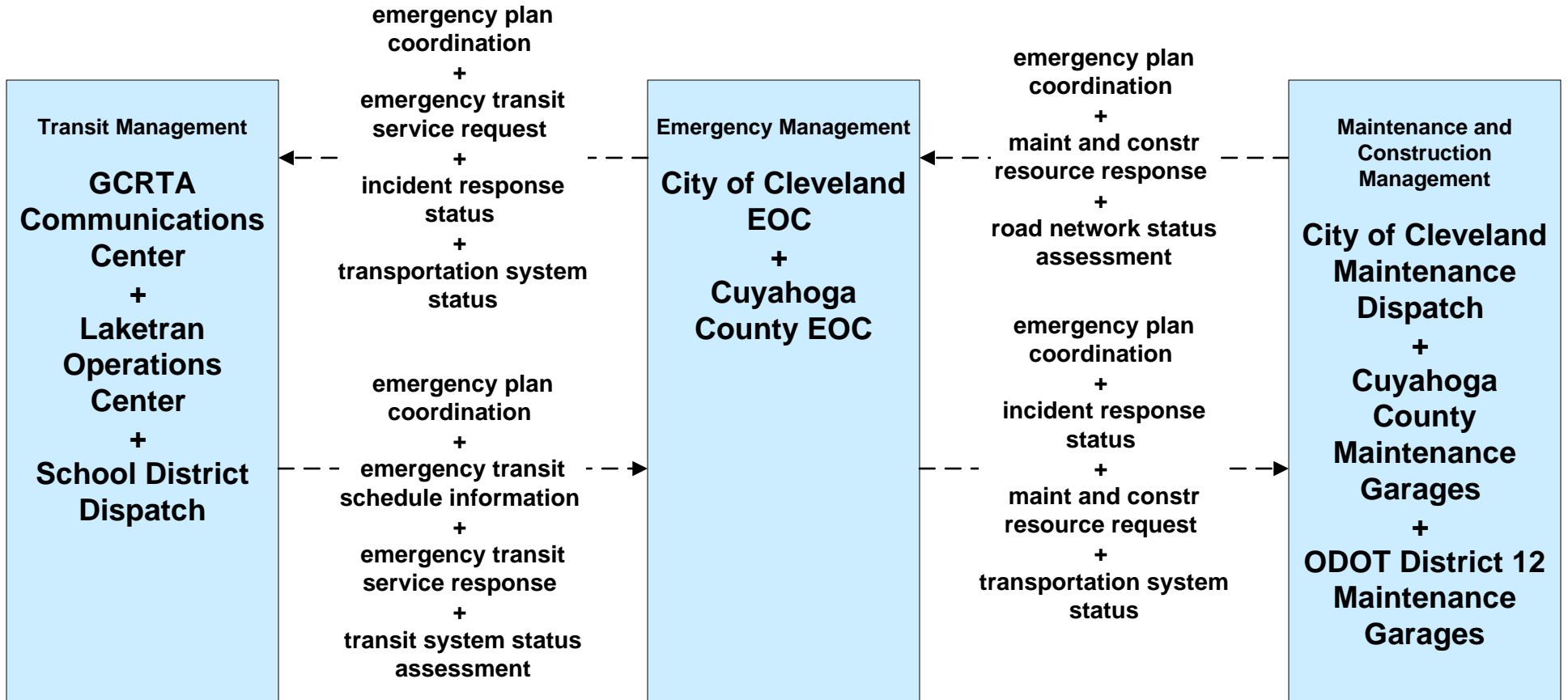
**EM06 - Wide Area Alerts  
County EOCs (1 of 2)**



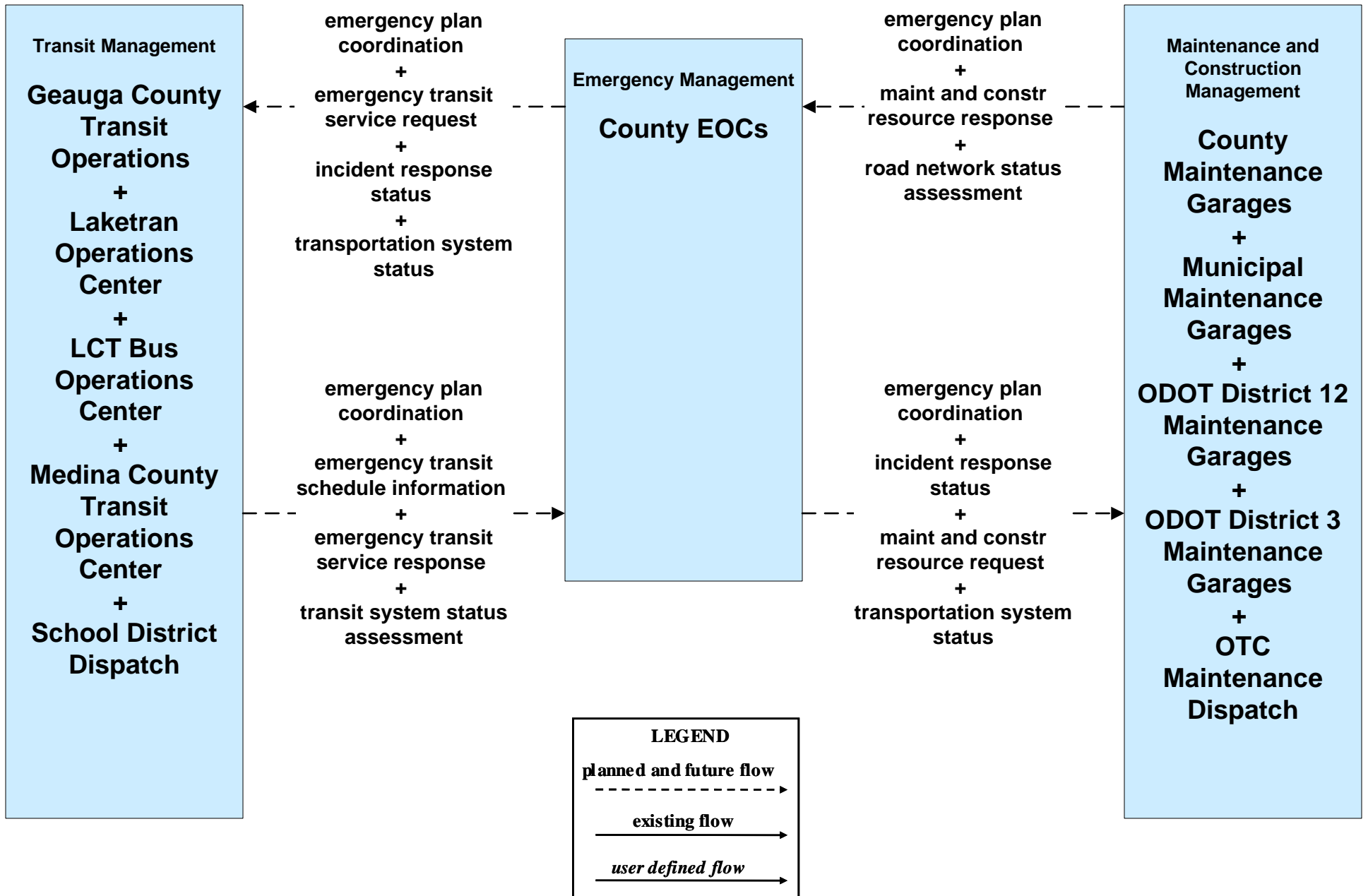
**EM07 - Early Warning System  
County EOCs (1 of 2)**



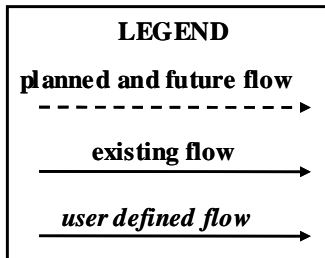
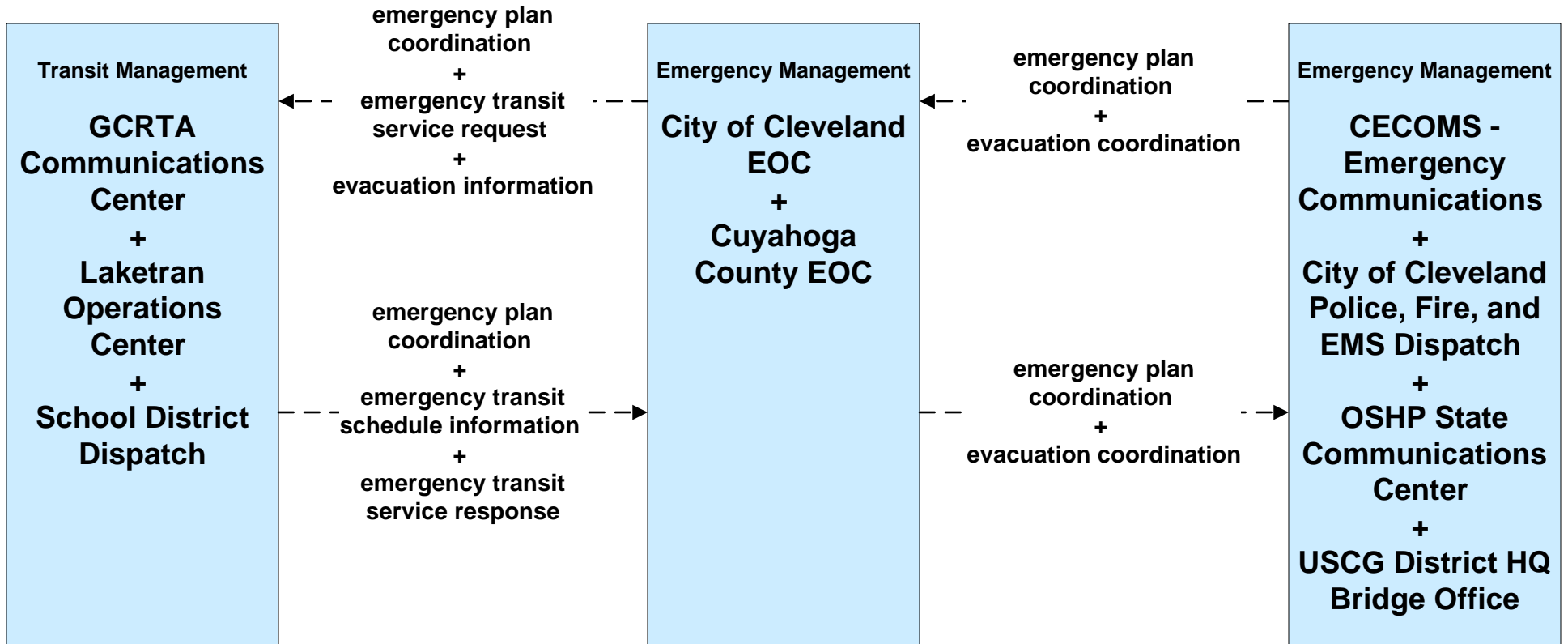
**EM08 - Disaster Response and Recovery  
City of Cleveland EOC / Cuyahoga County EOC (2 of 2)**



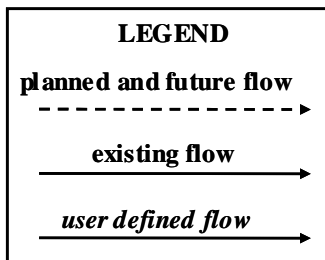
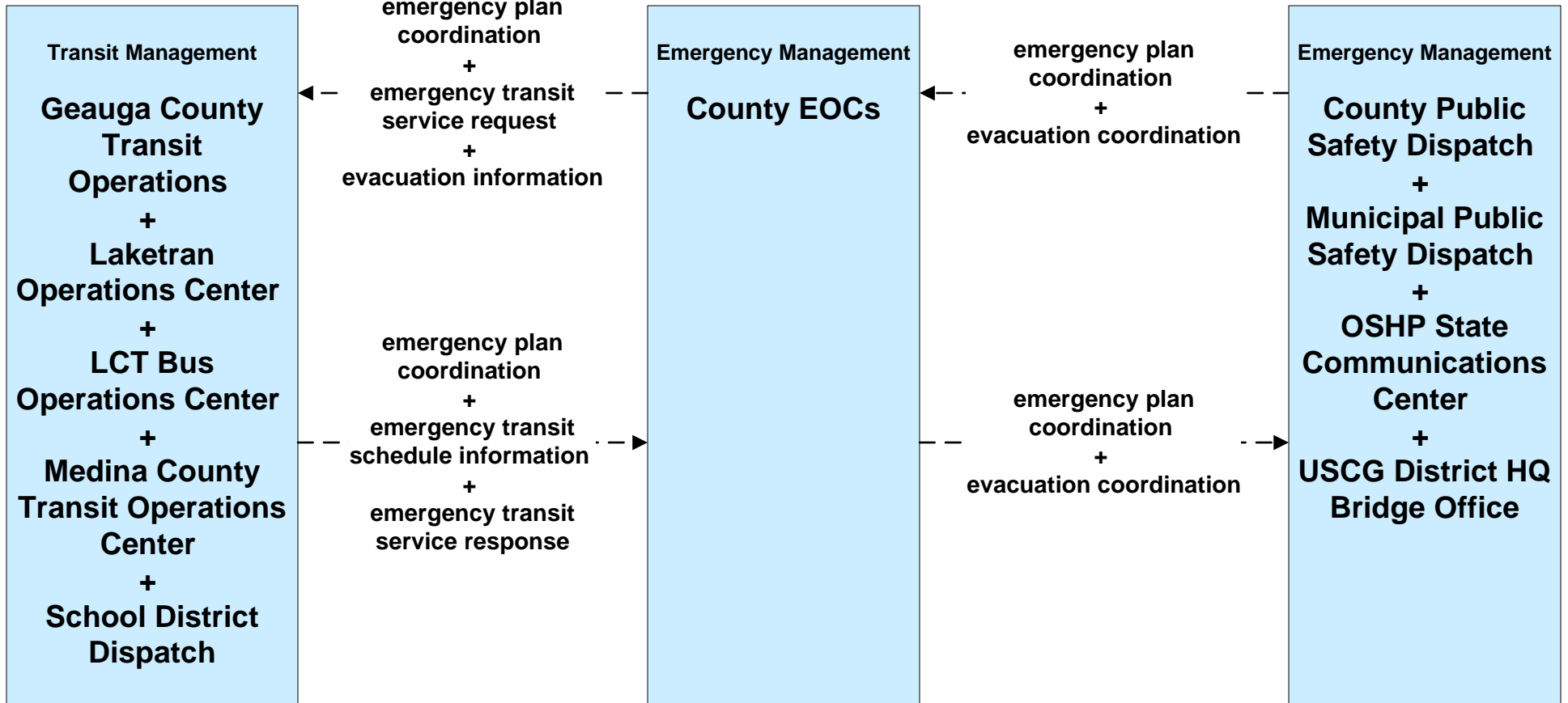
**EM08 - Disaster Response and Recovery  
County EOCs (2 of 2)**



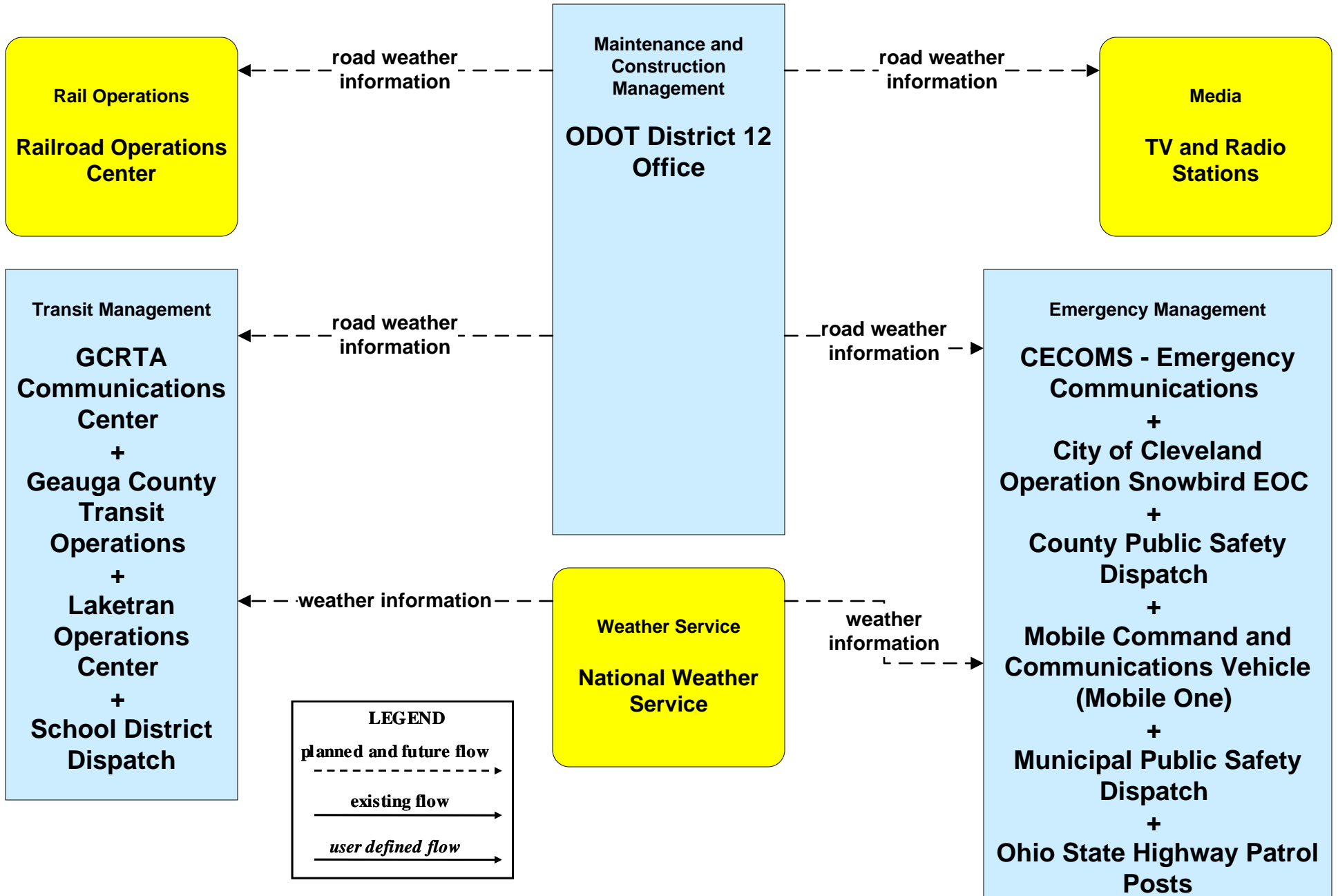
**EM09 - Evacuation and Reentry Management  
City of Cleveland EOC / Cuyahoga County EOC (1 of 2)**



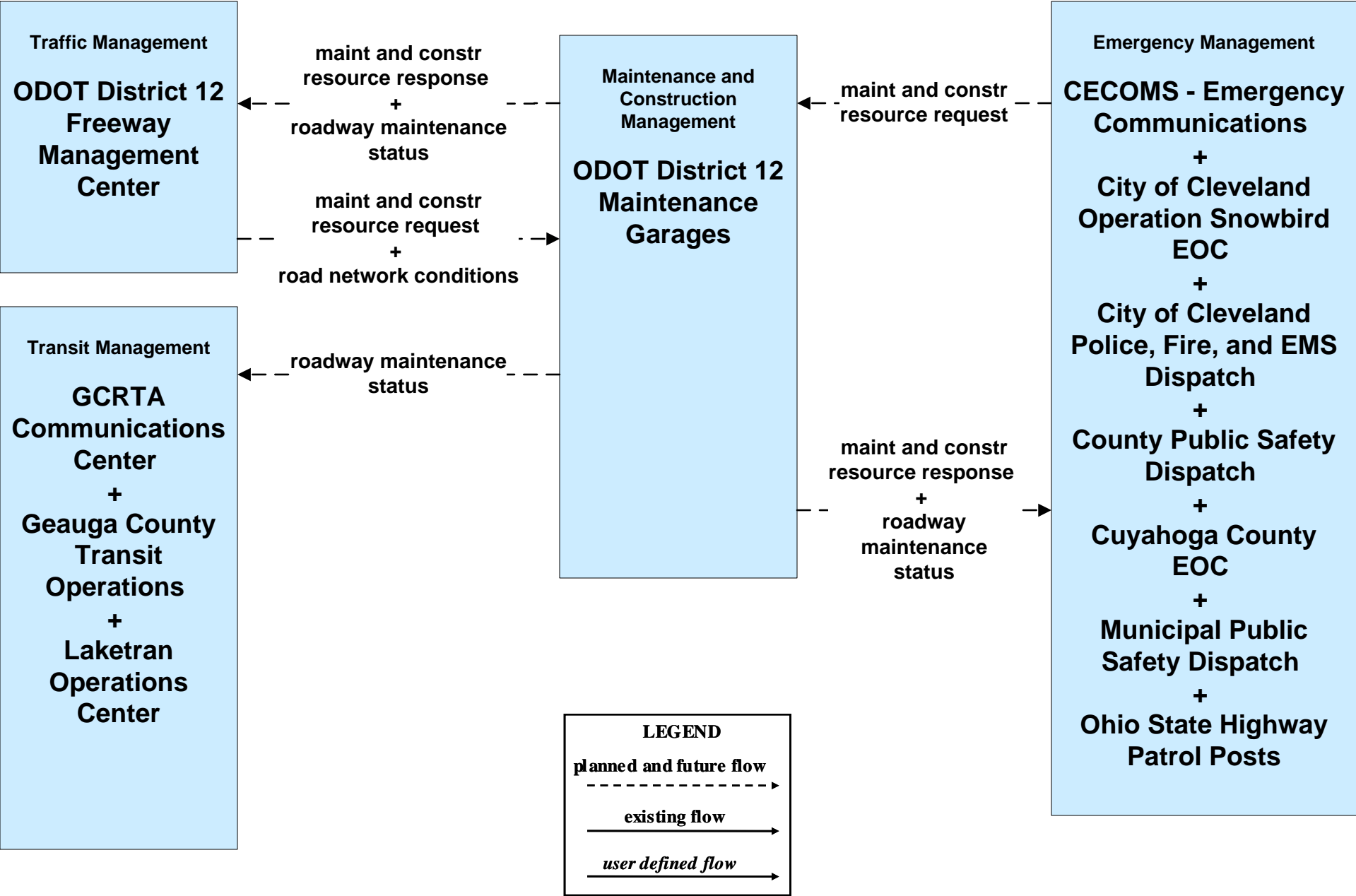
**EM09 - Evacuation and Reentry Management  
County EOCs (1 of 2)**



**MC04 - Weather Information Processing and Distribution  
ODOT District 12 (2 of 2)**

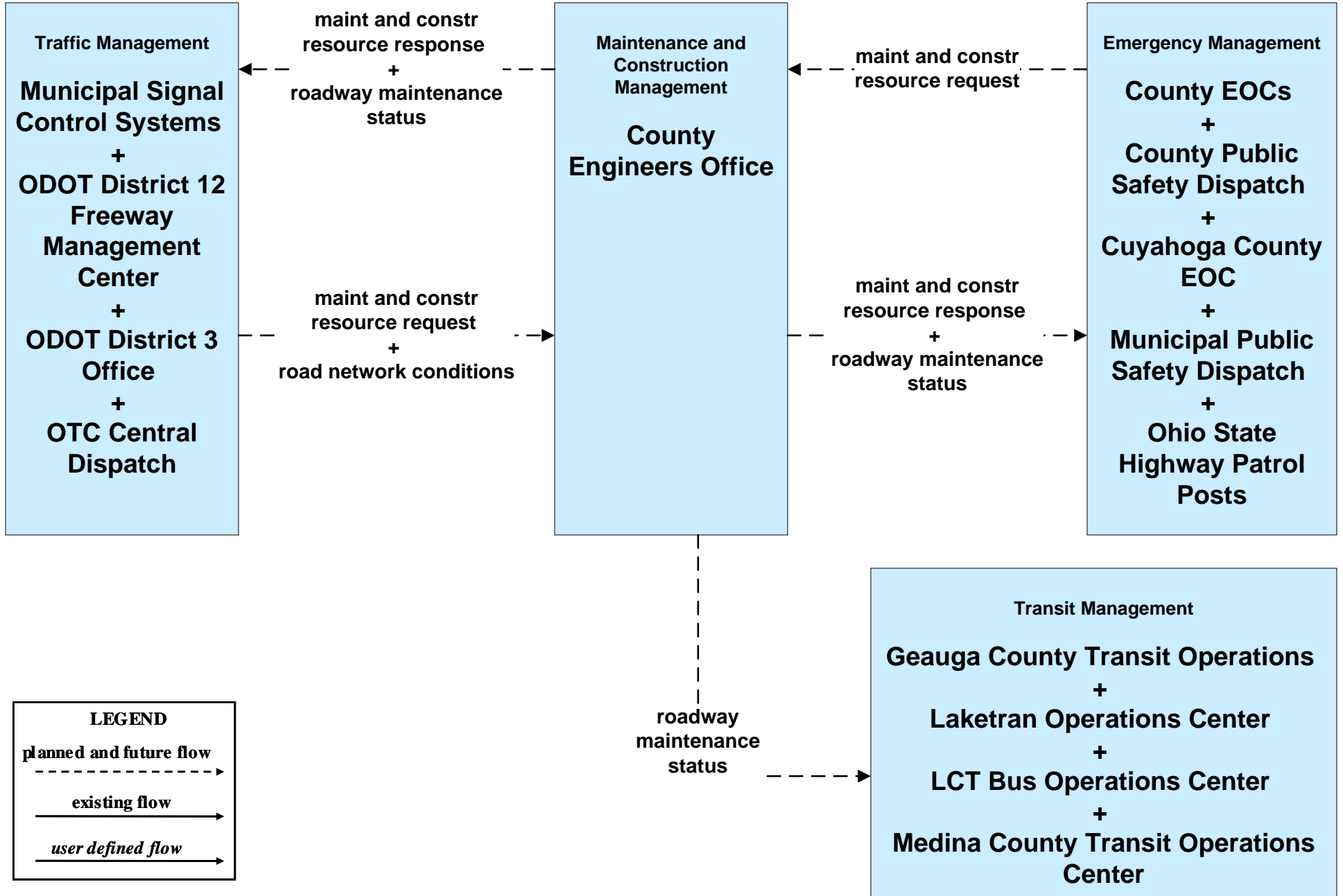


**MC06 - Winter Maintenance  
 ODOT District 12 Maintenance Garages (2 of 2)**

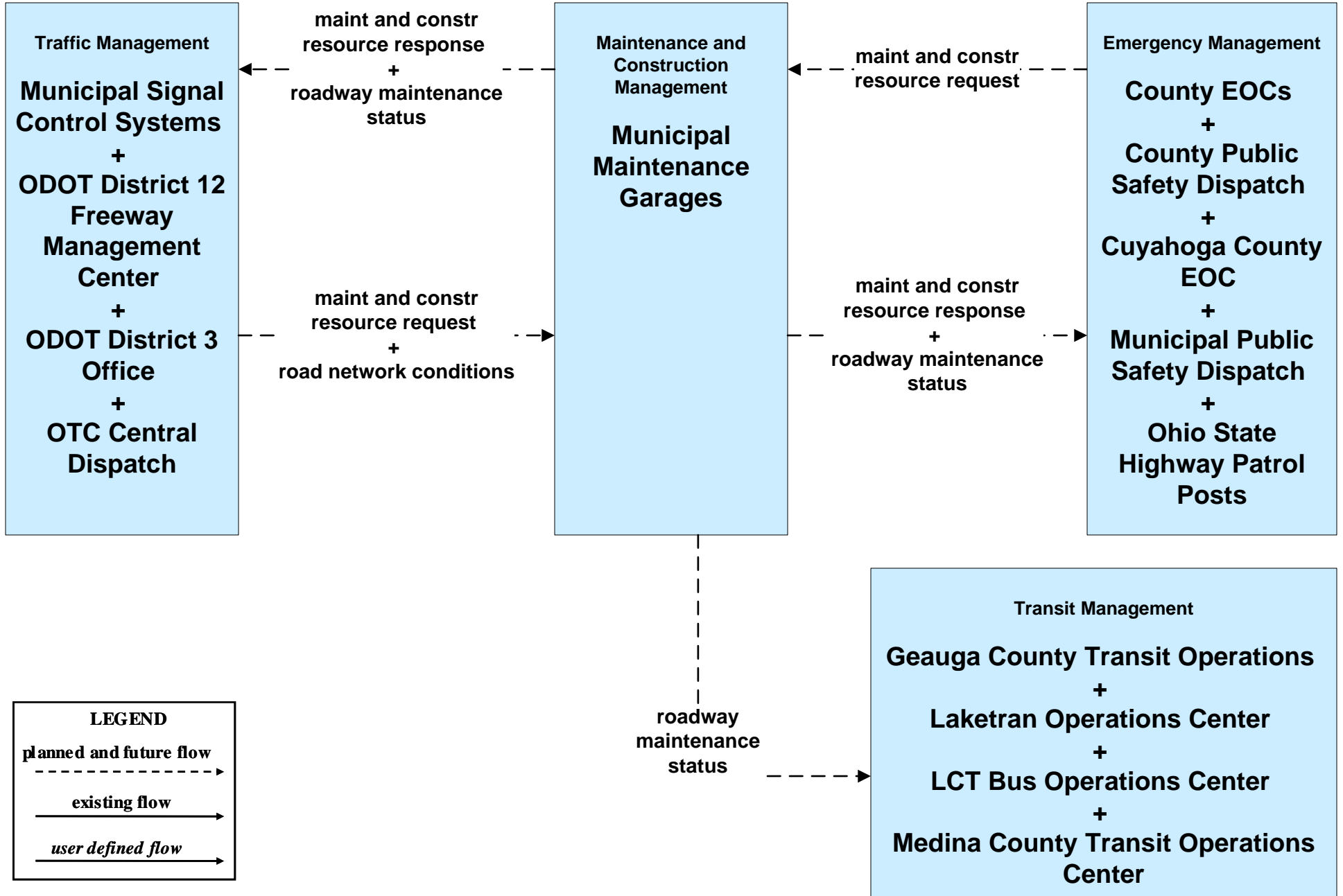




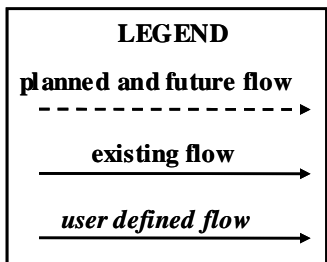
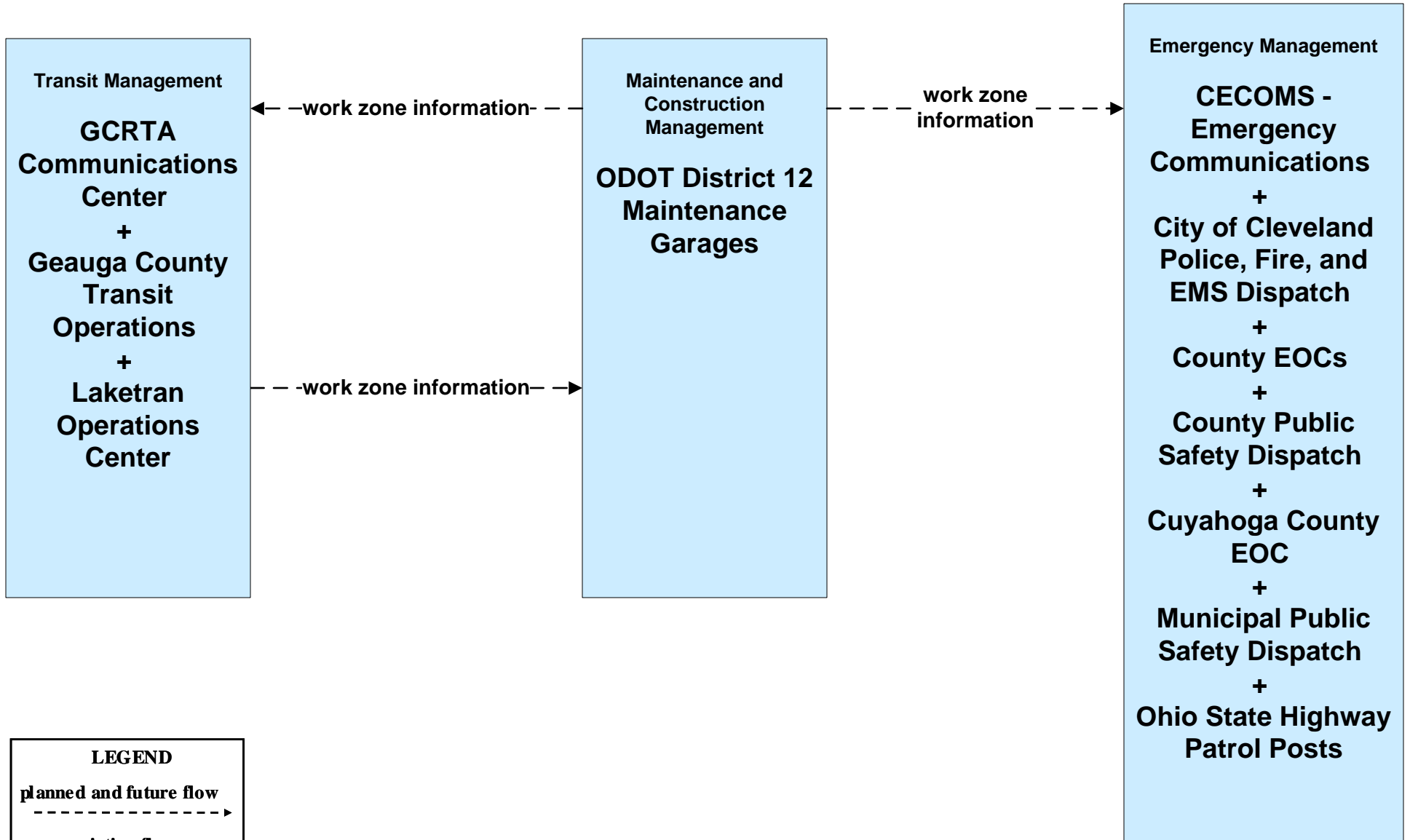
**MC06 - Winter Maintenance  
County Engineers Office (2 of 2)**



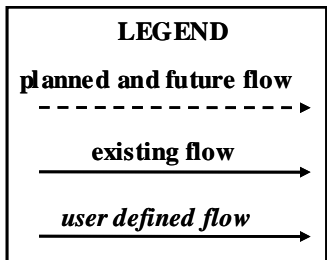
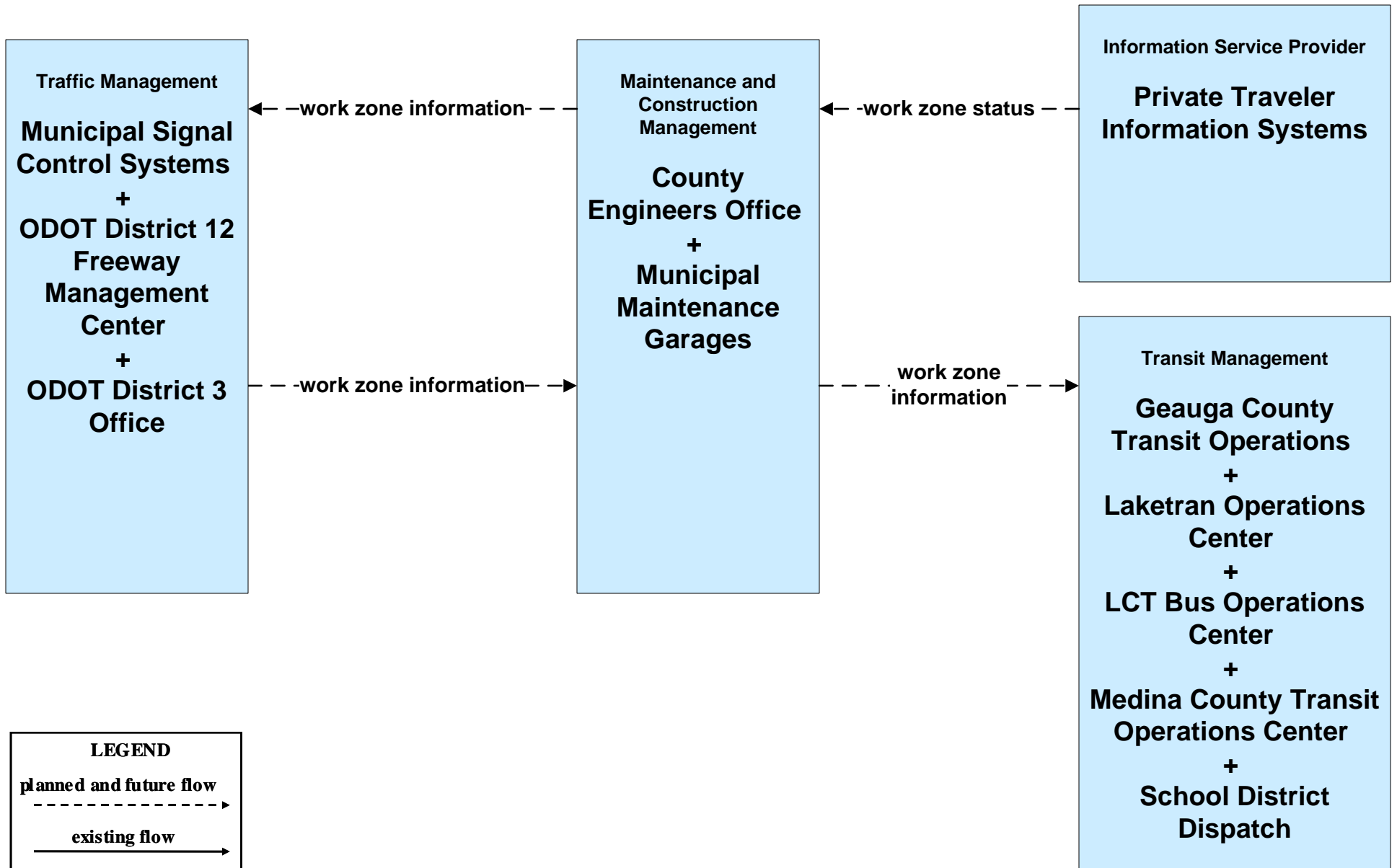
**MC06 - Winter Maintenance  
Municipal Maintenance Garages (2 of 2)**



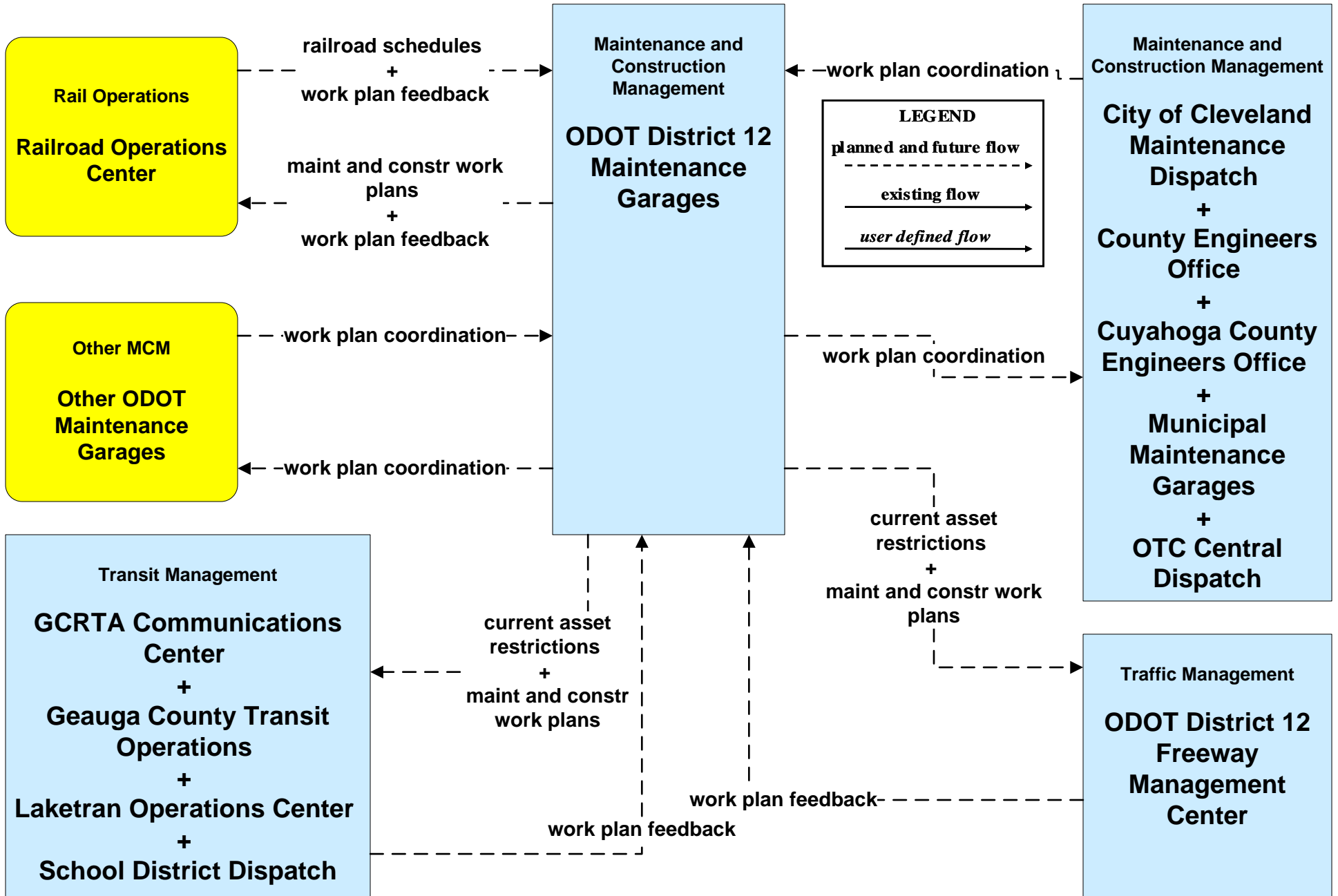
**MC08 - Workzone Management  
ODOT District 12 (2 of 2)**



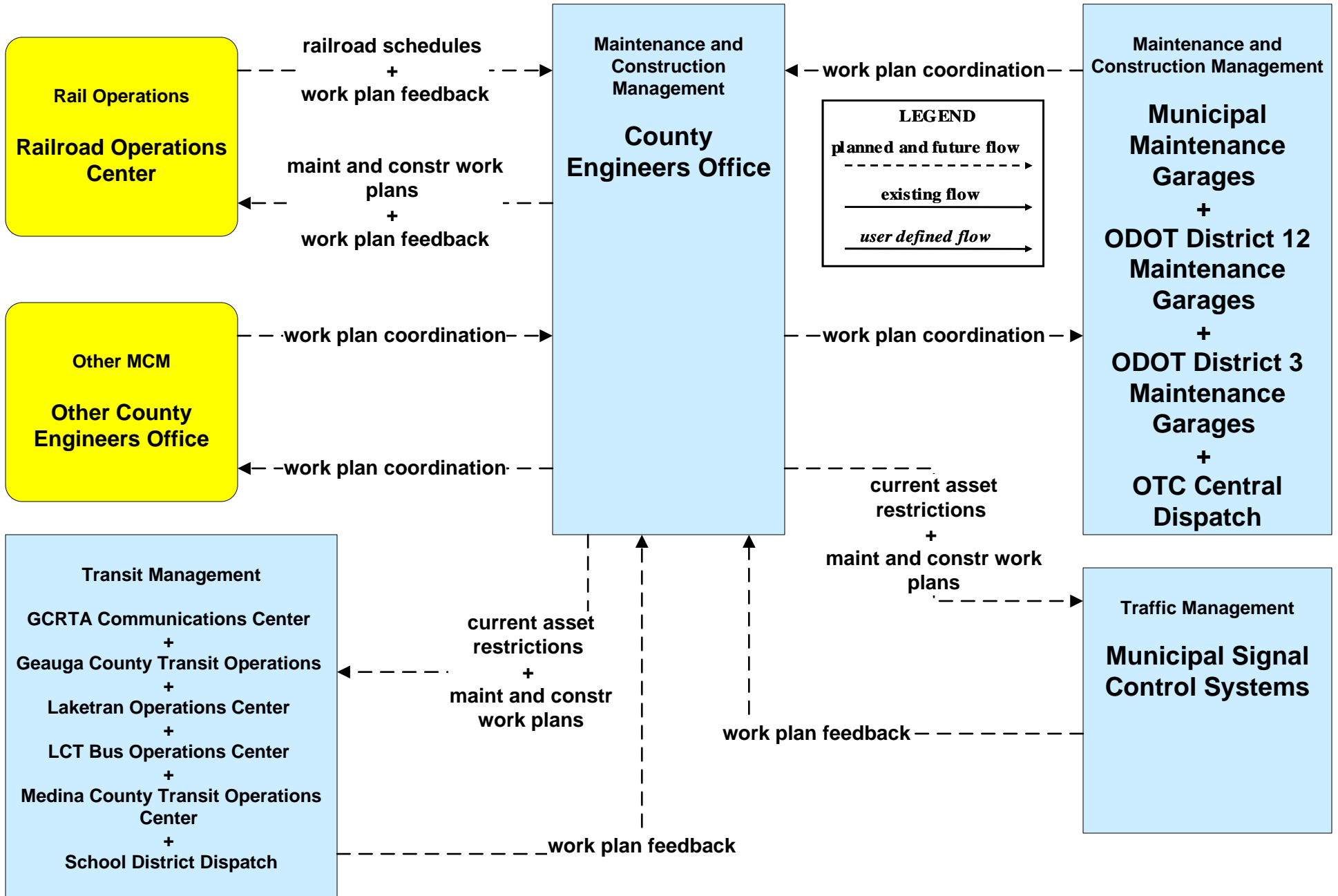
**MC08 - Workzone Management  
Municipal / County Maintenance Garages (2 of 2)**



**MC10 - Maintenance and Construction Activity Coordination  
ODOT District 12 Maintenance Garages**



# MC10 - Maintenance and Construction Activity Coordination County Engineers Office



# MC10 - Maintenance and Construction Activity Coordination Municipal Maintenance Garages

