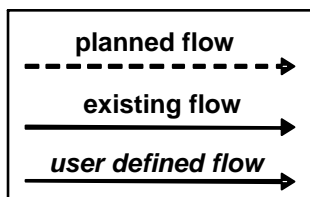
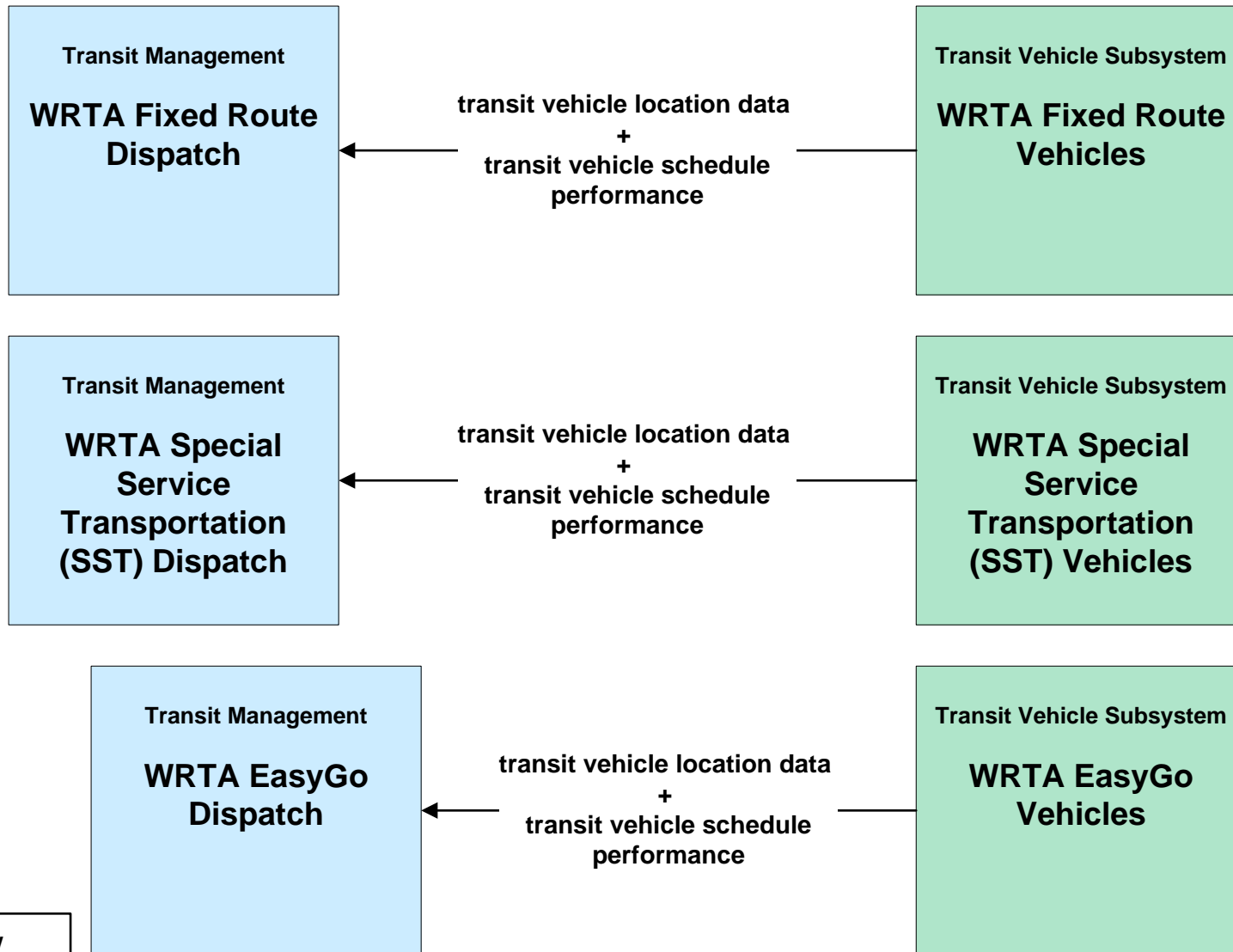


Eastgate Regional ITS Architecture

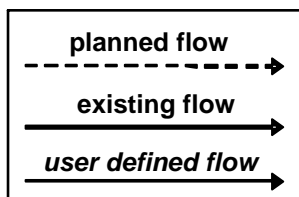
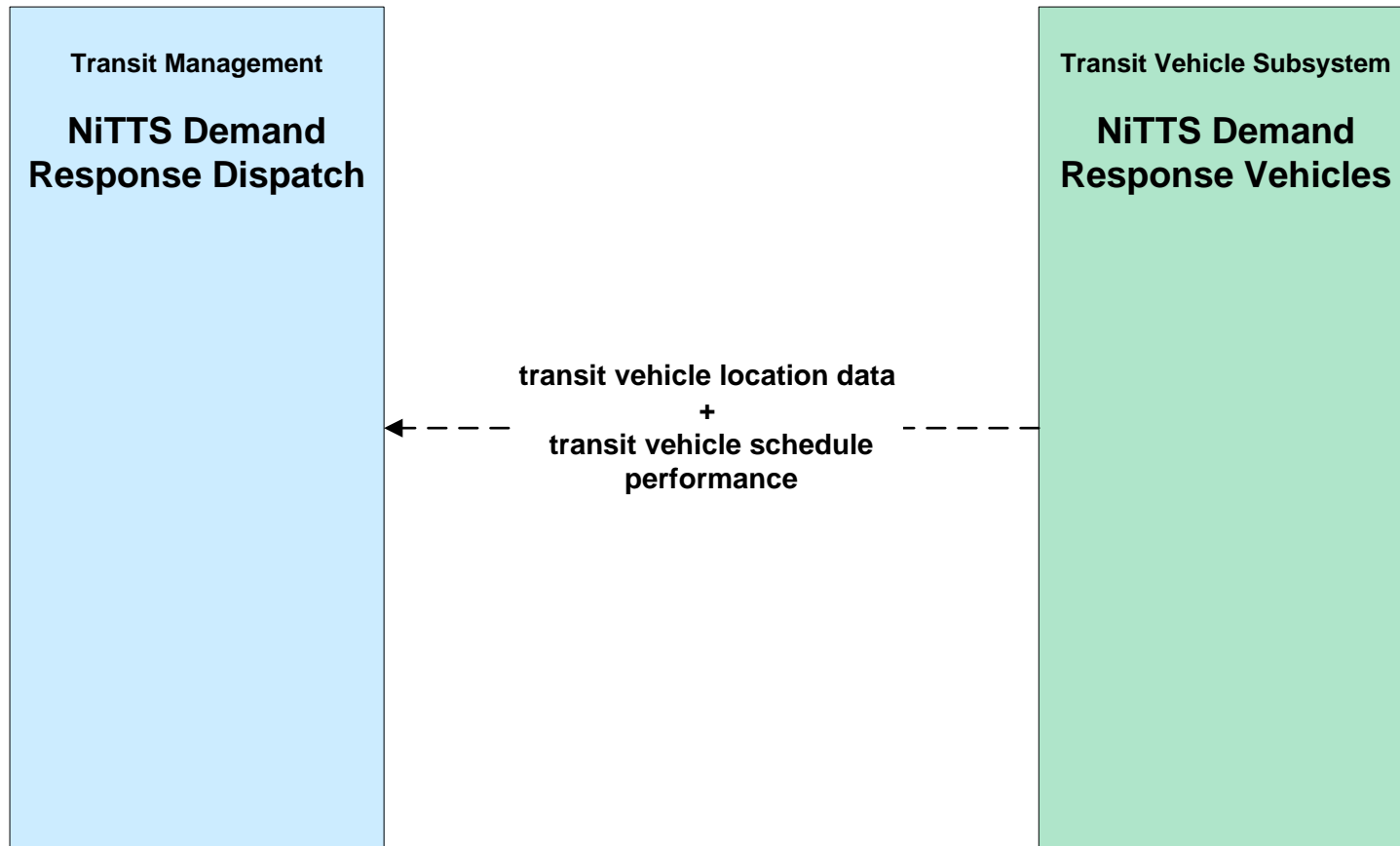
Customized Market Package Diagrams

**Advanced Public Transportation Systems
(APTS)**

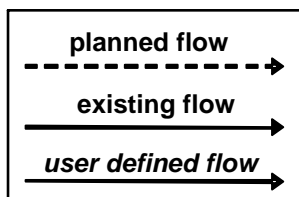
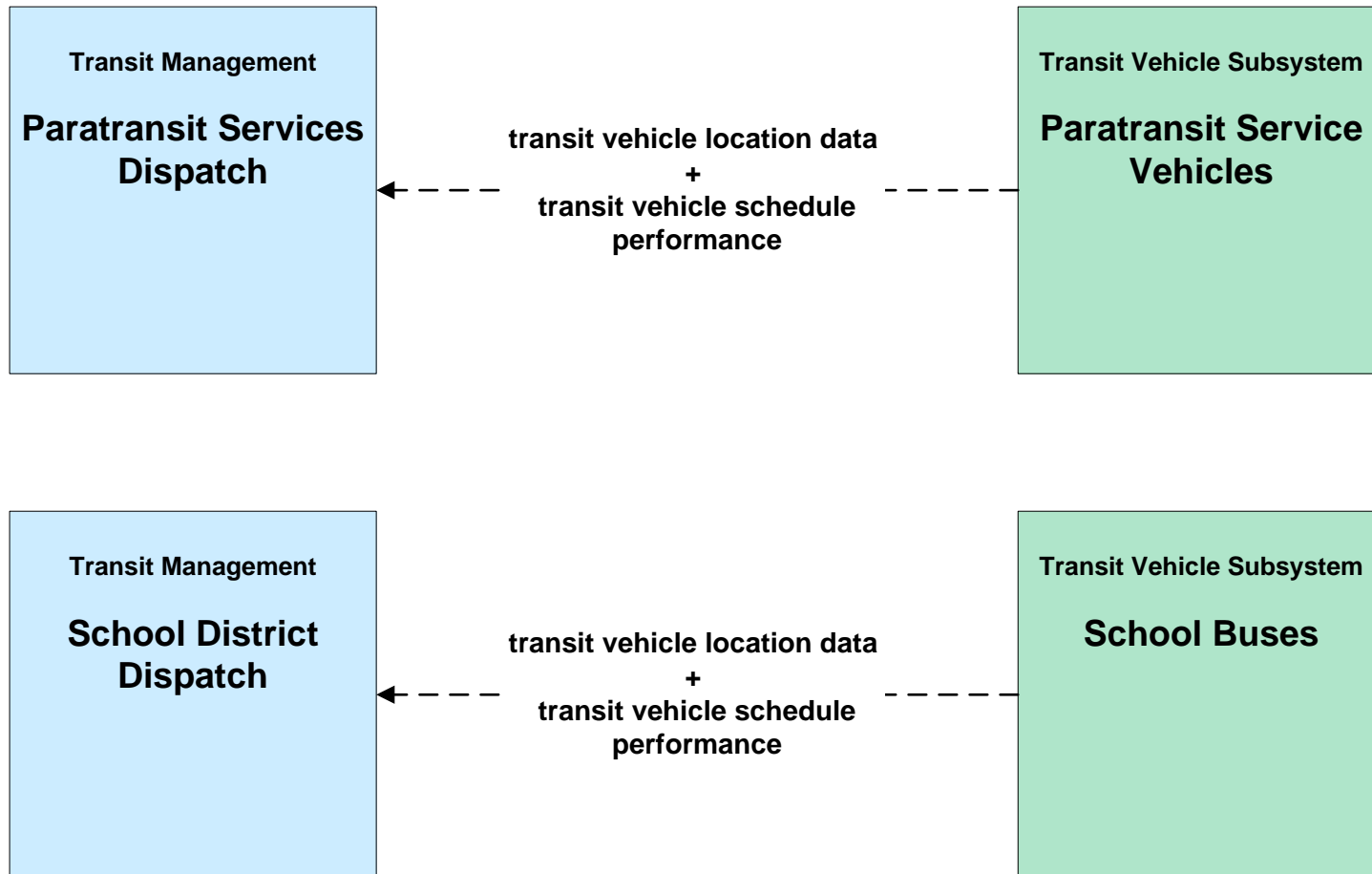
APTS01 - Transit Vehicle Tracking WRTA



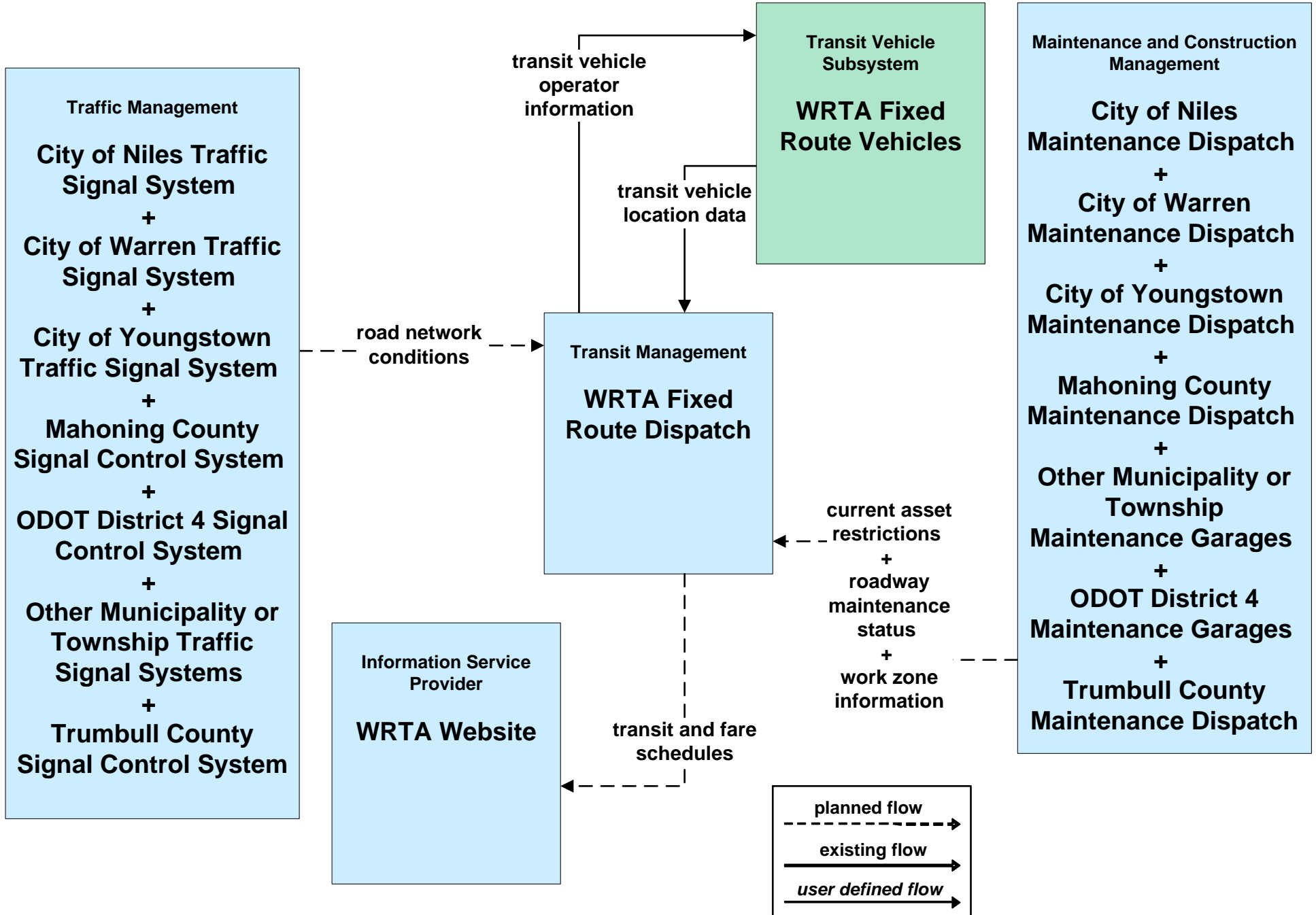
APTS01 - Transit Vehicle Tracking NiTTS



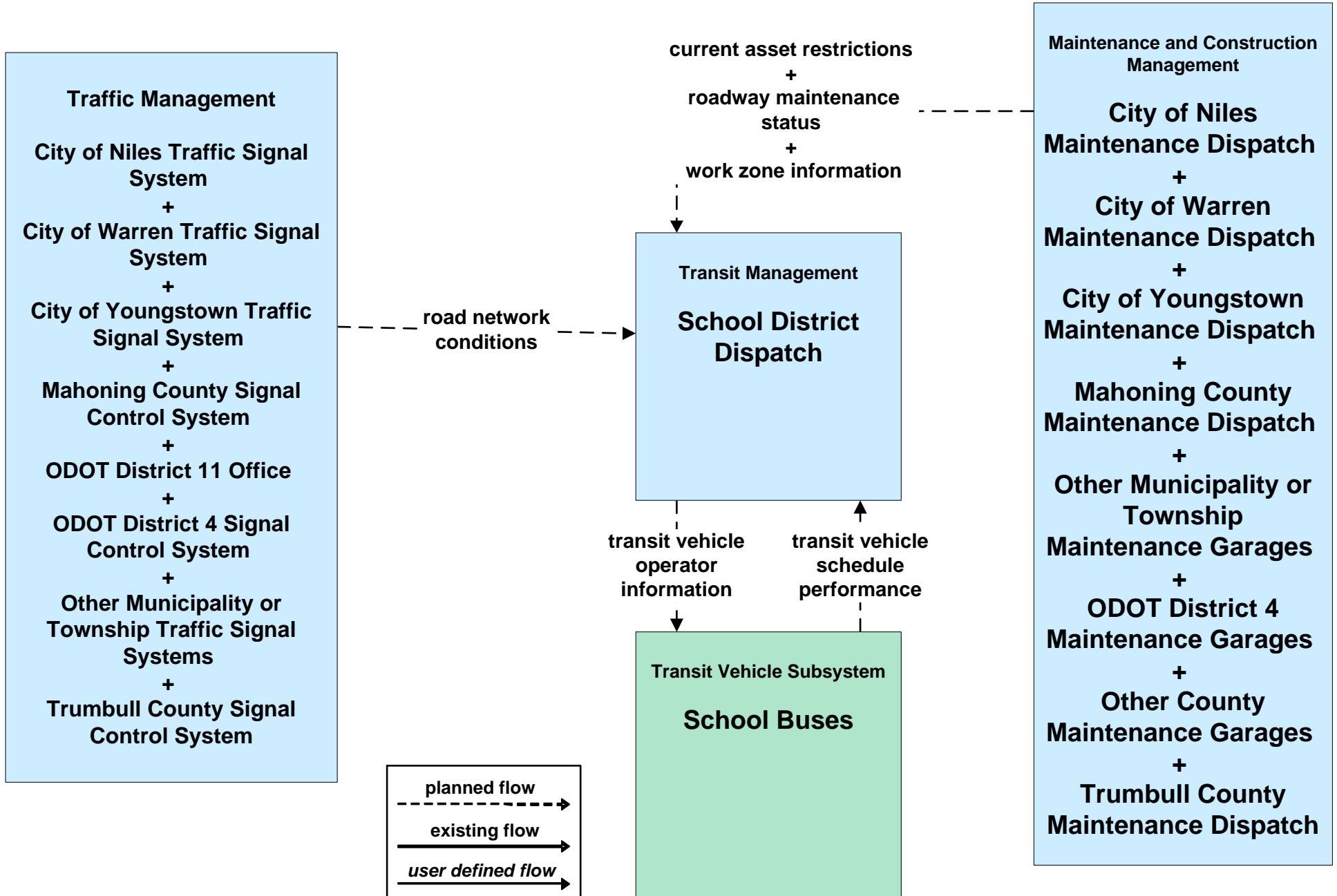
**APTS01 - Transit Vehicle Tracking
Social Agencies Transit/ School Districts**



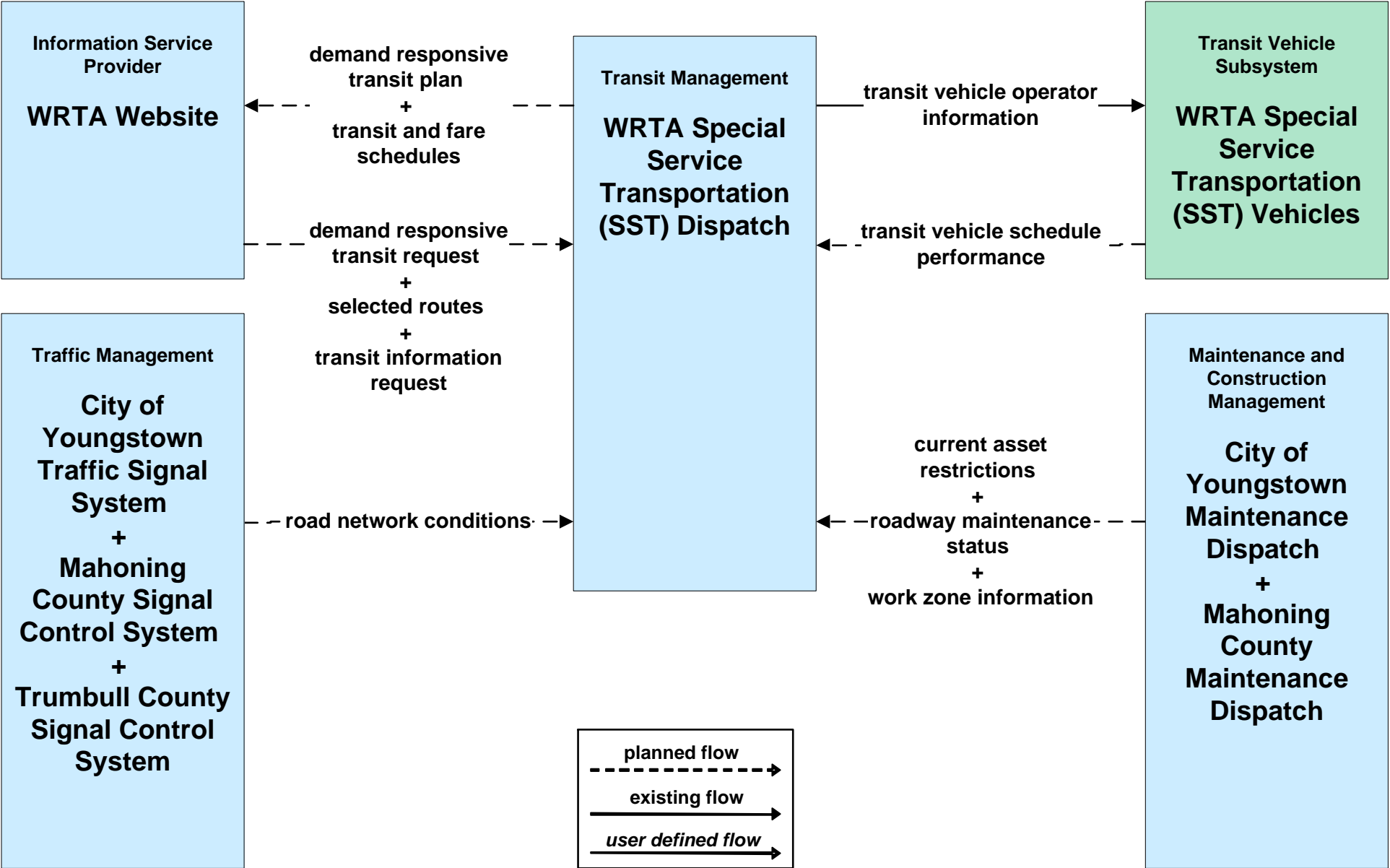
APTS02 - Transit Fixed-Route Operations WRTA



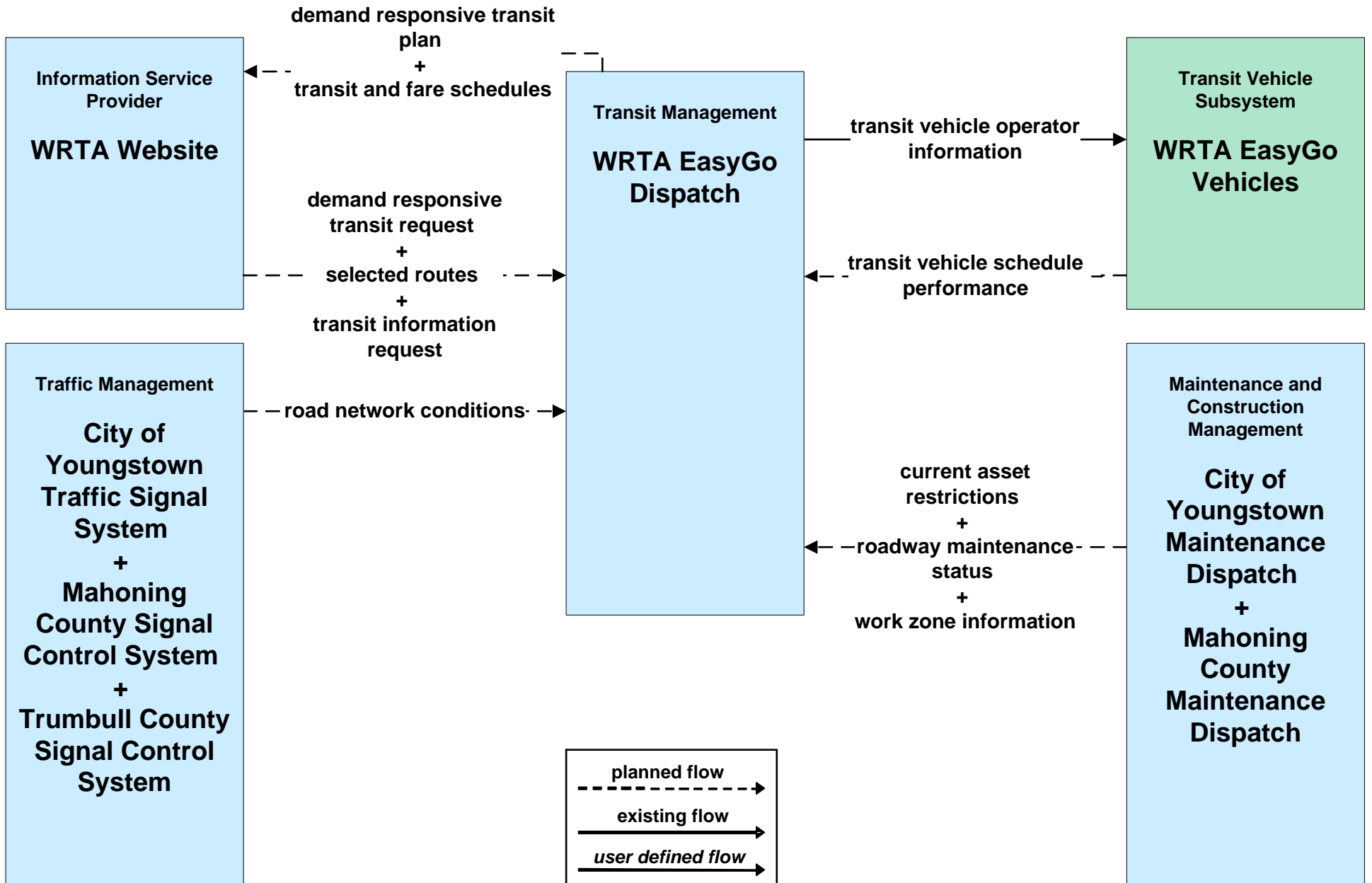
APTS02 - Transit Fixed-Route Operations School Districts



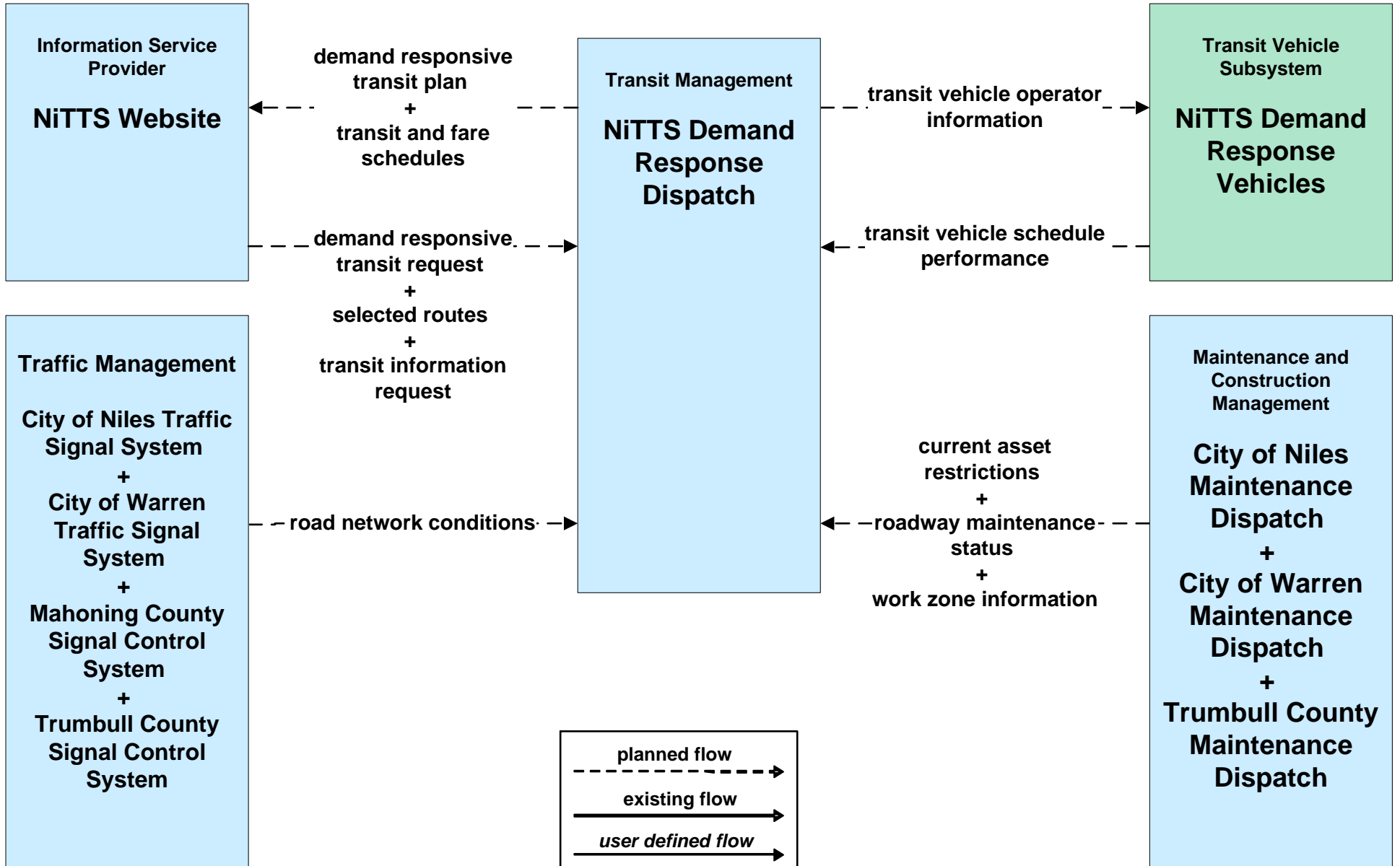
APTS03 - Demand Response Transit Operations WRTA



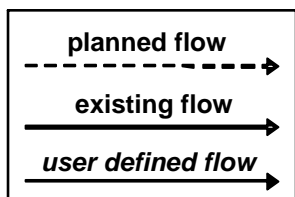
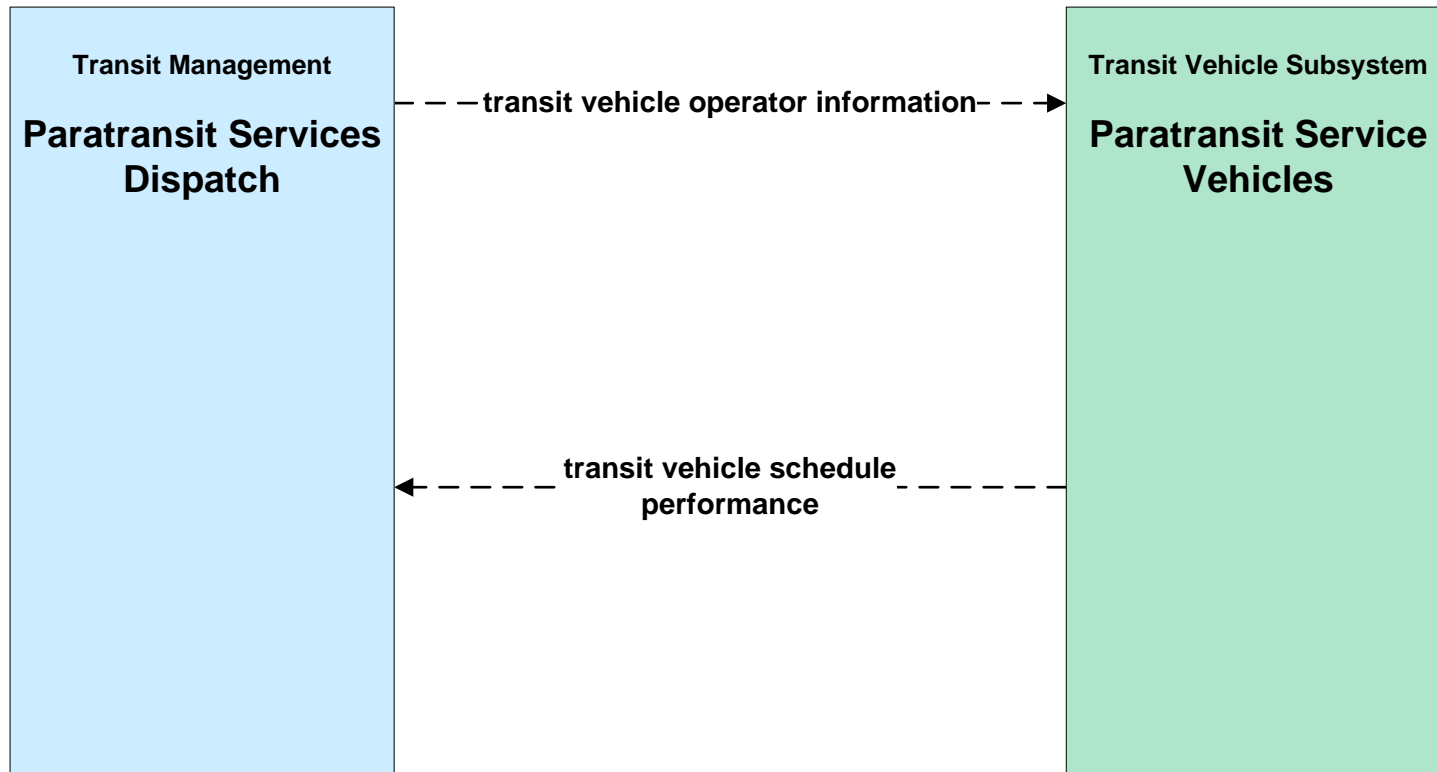
APTS03 - Demand Response Transit Operations WRTA EasyGo



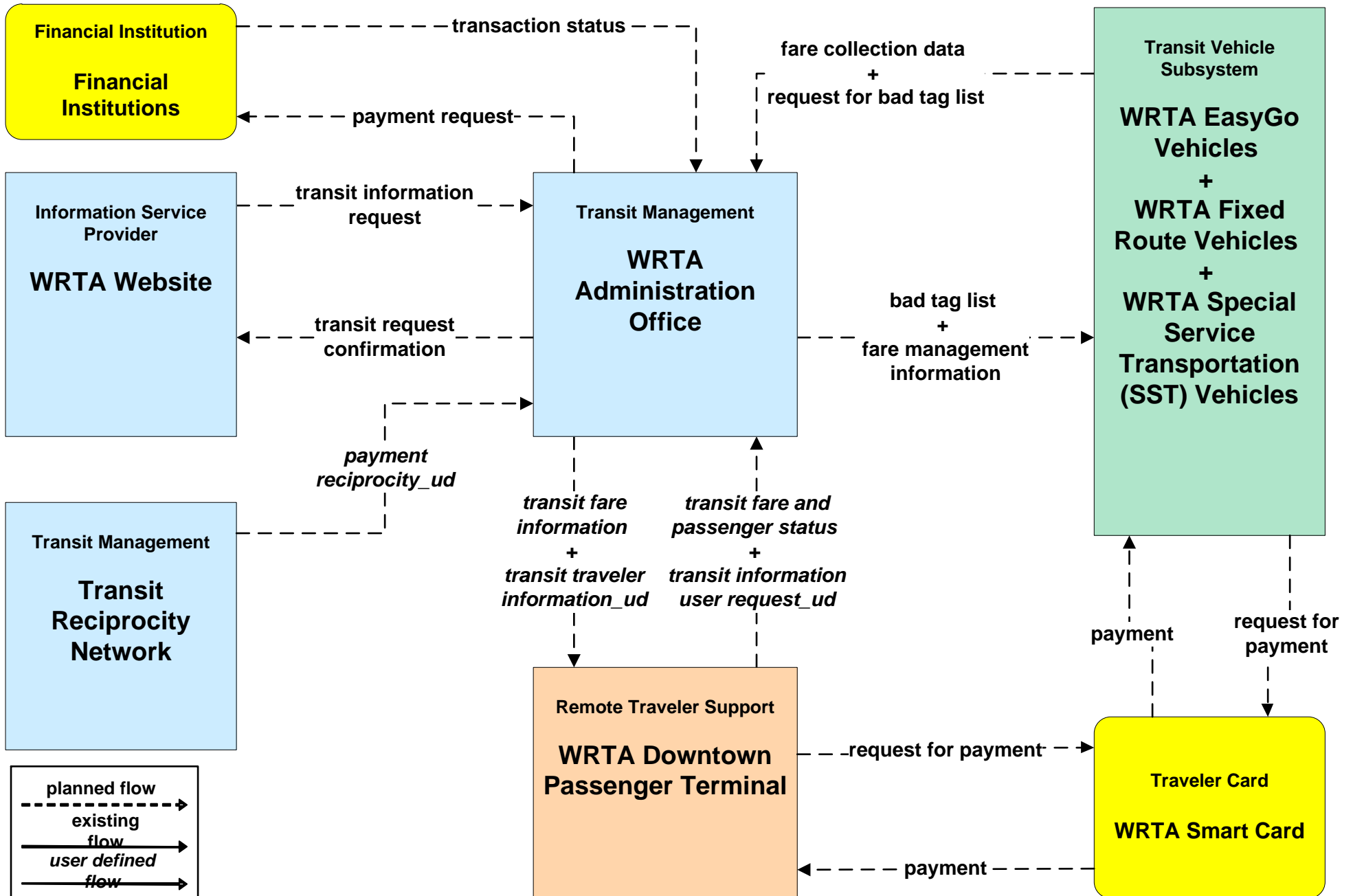
APTS03 - Demand Response Transit Operations NiTTS



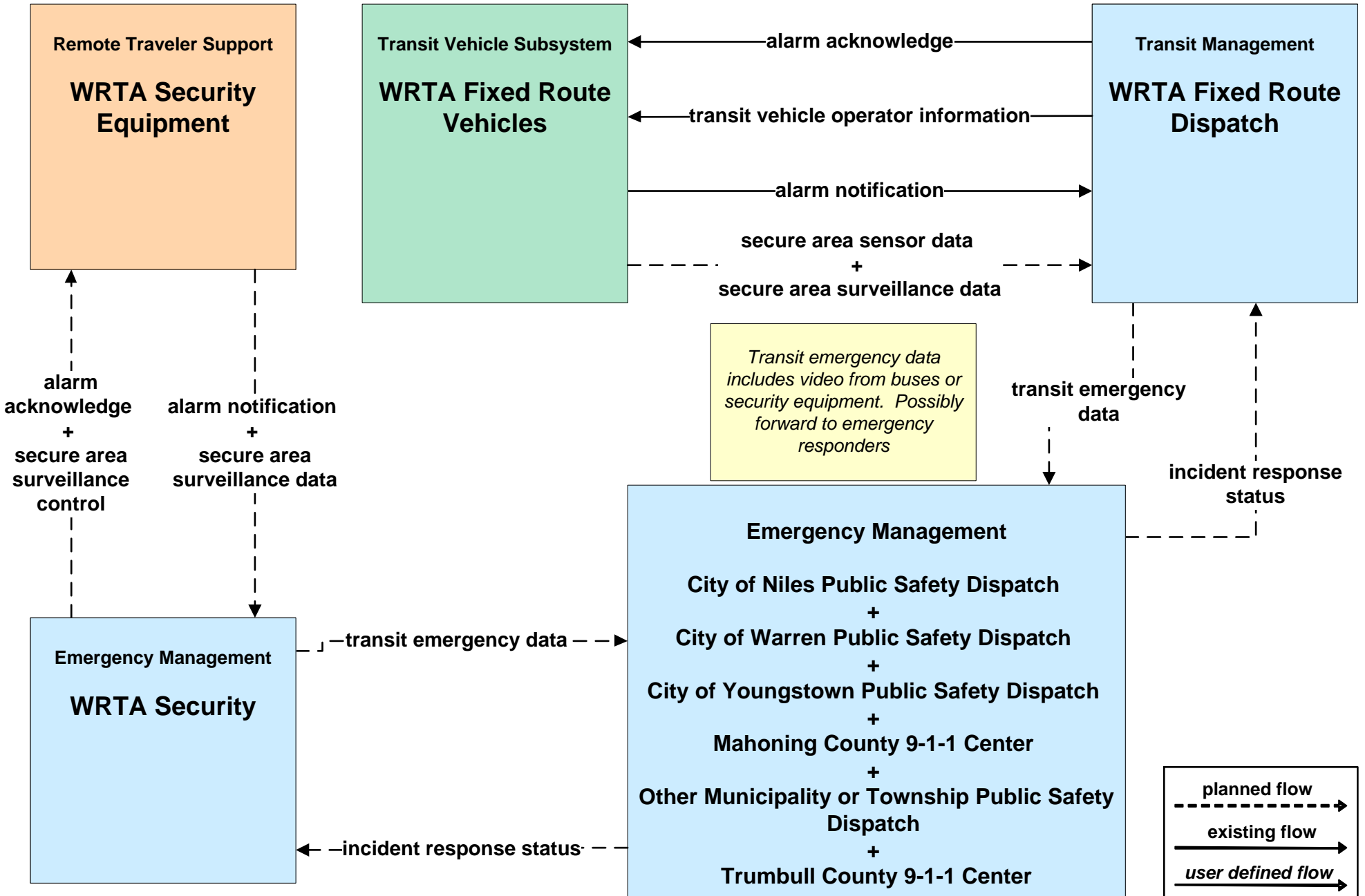
**APTS03 - Demand Response Transit Operations
Social Agencies Transit**



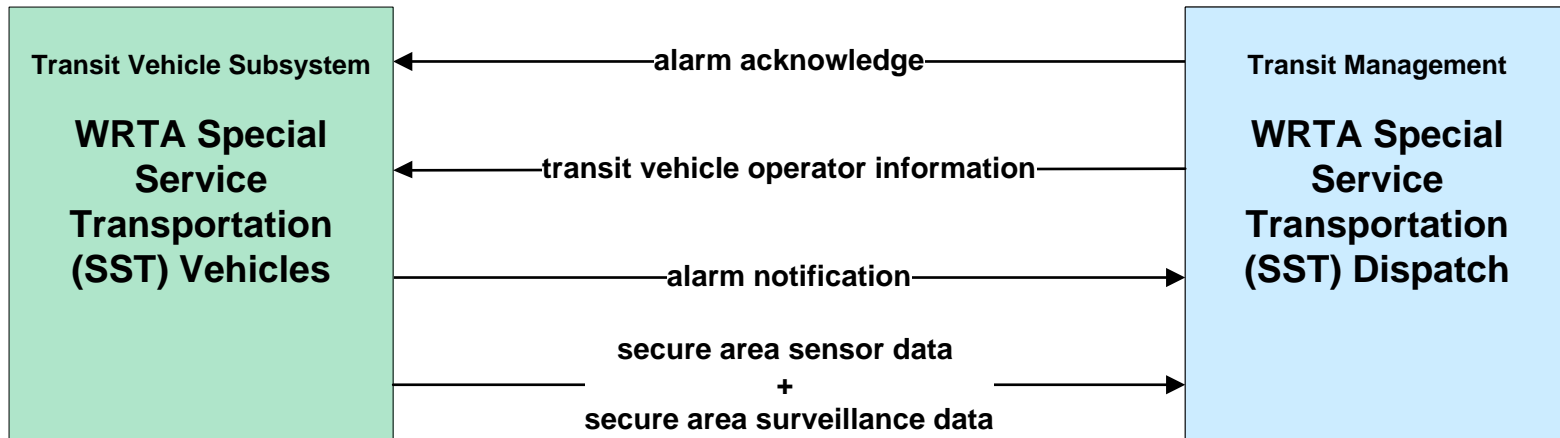
APTS04 - Transit Fare Collection Management WRTA



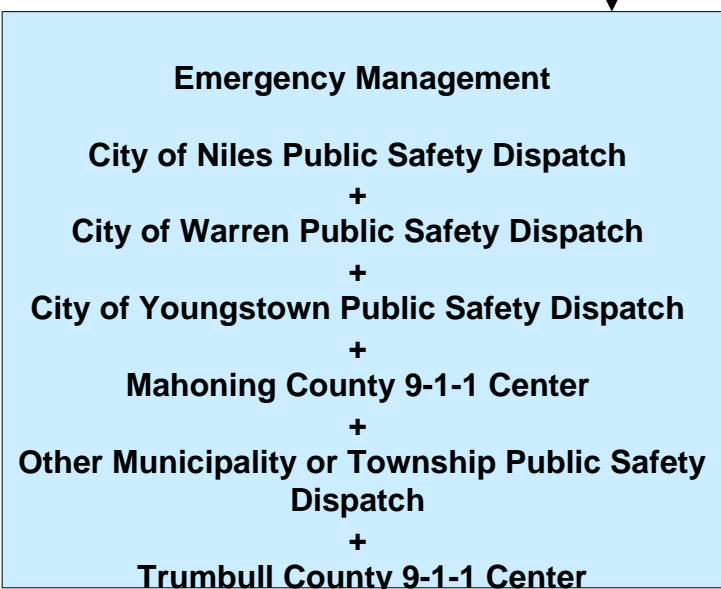
APTS05 - Transit Security WRTA



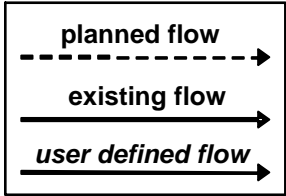
**APTS05 - Transit Security
WRTA- SST**



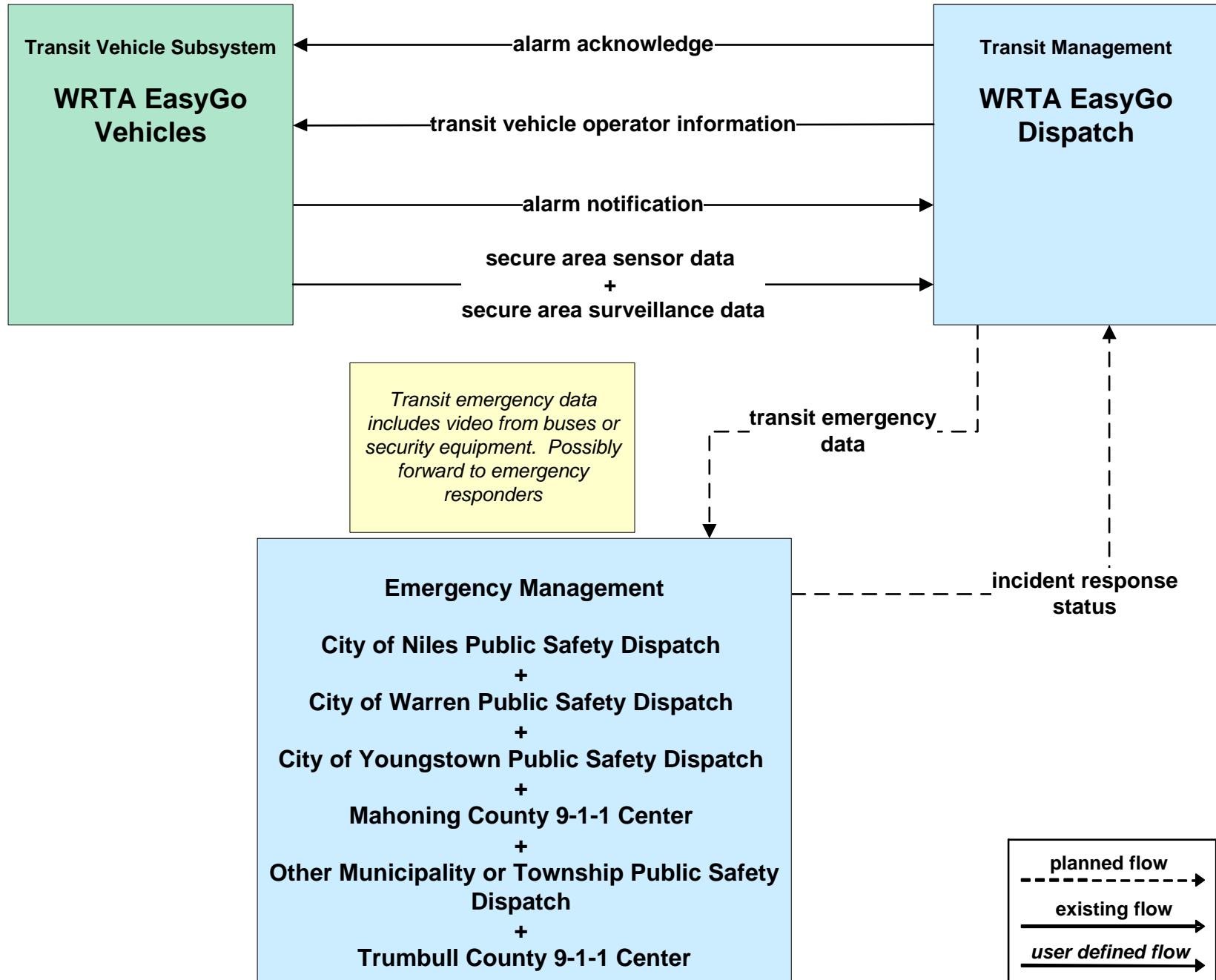
Transit emergency data includes video from buses or security equipment. Possibly forward to emergency responders



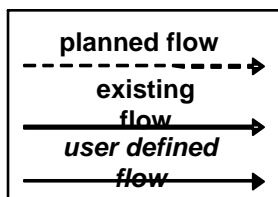
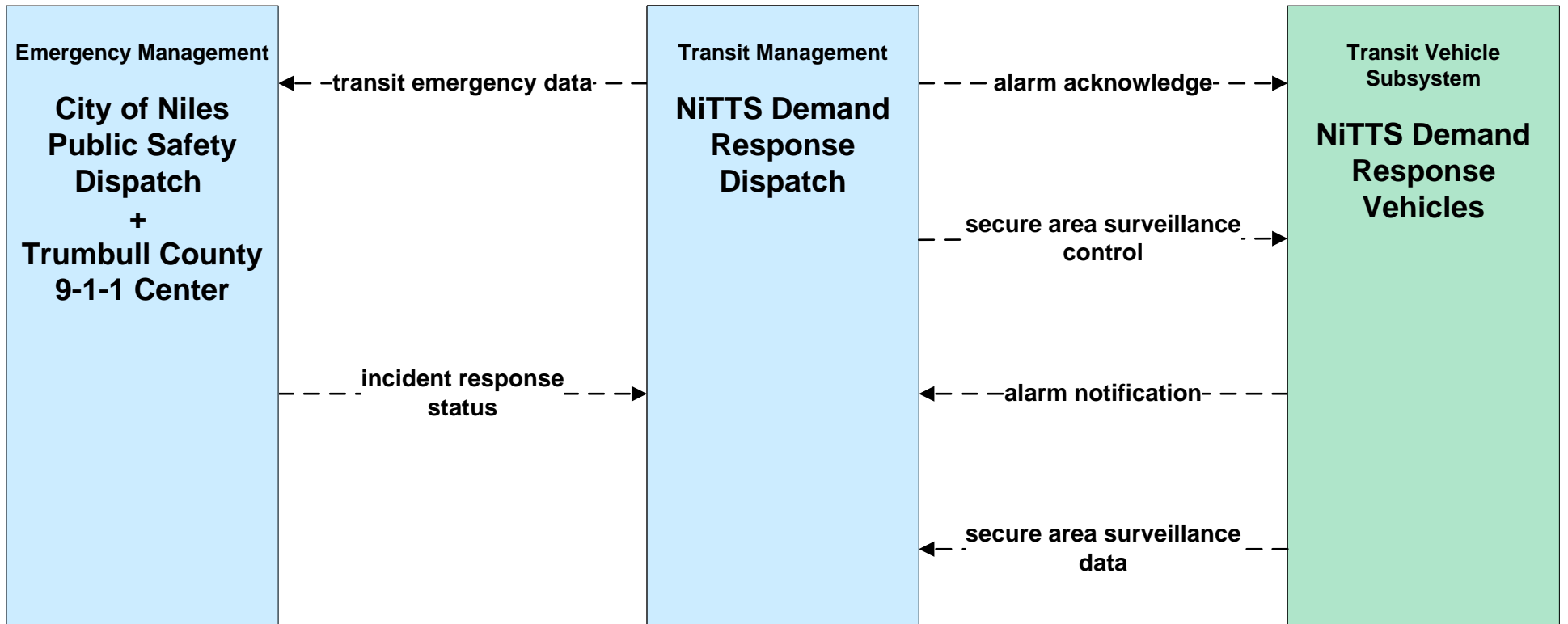
incident response status



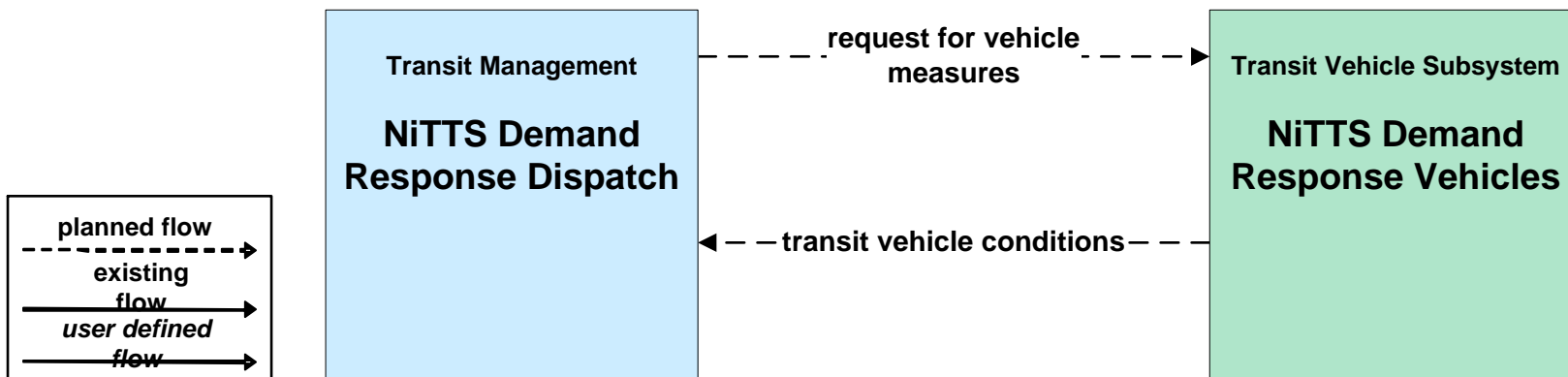
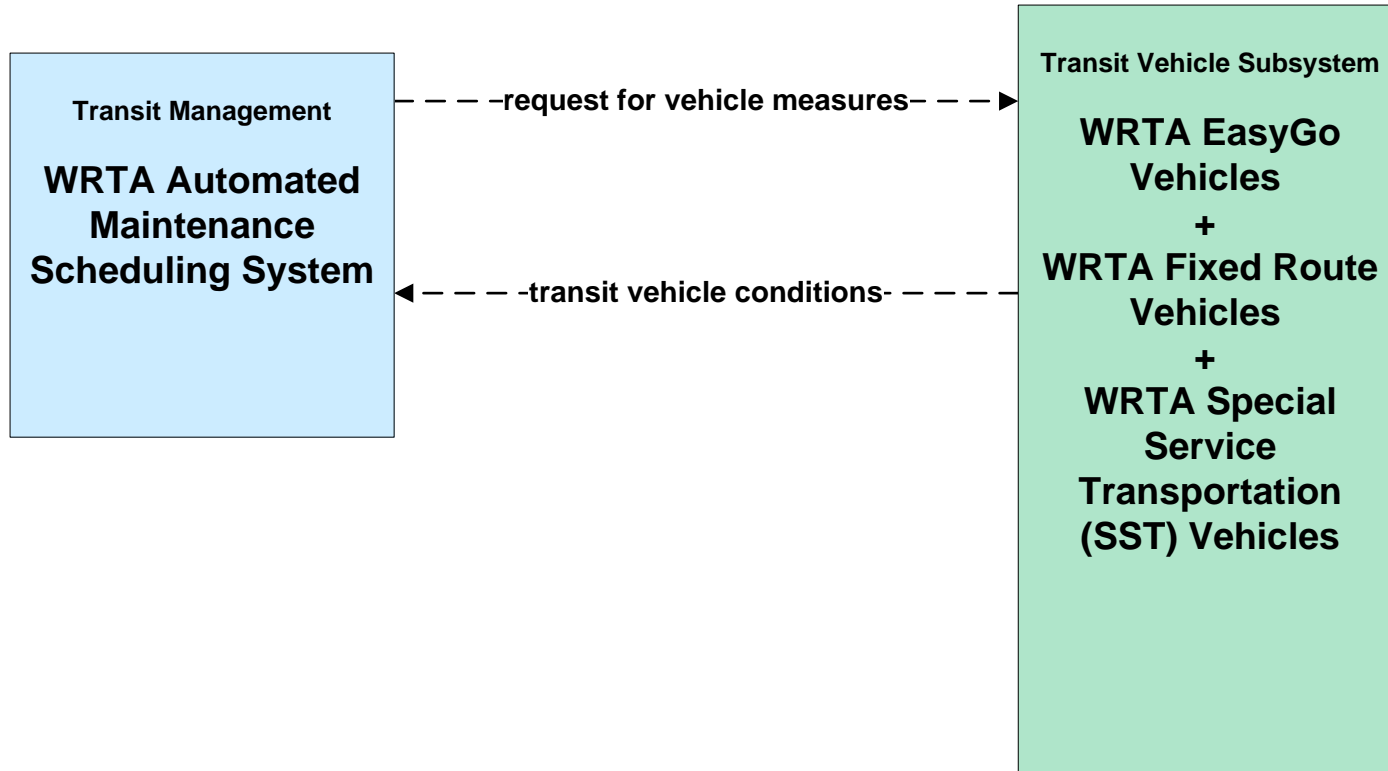
**APTS05 - Transit Security
WRTA- EasyGo**



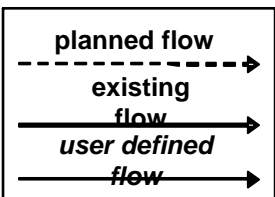
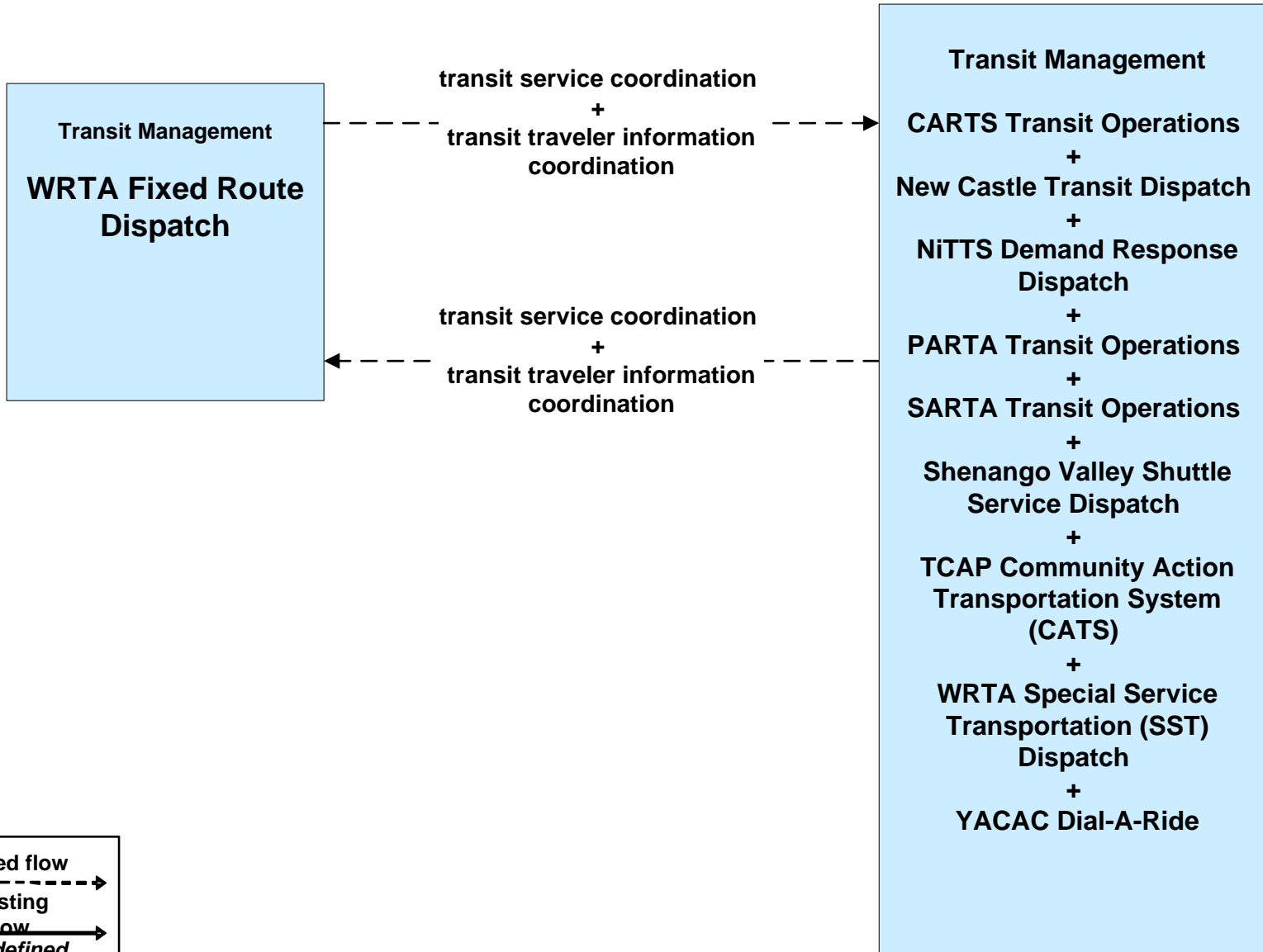
APTS05 - Transit Security NiTTS



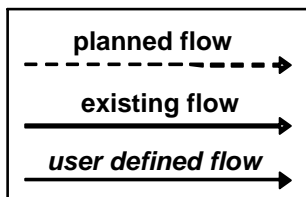
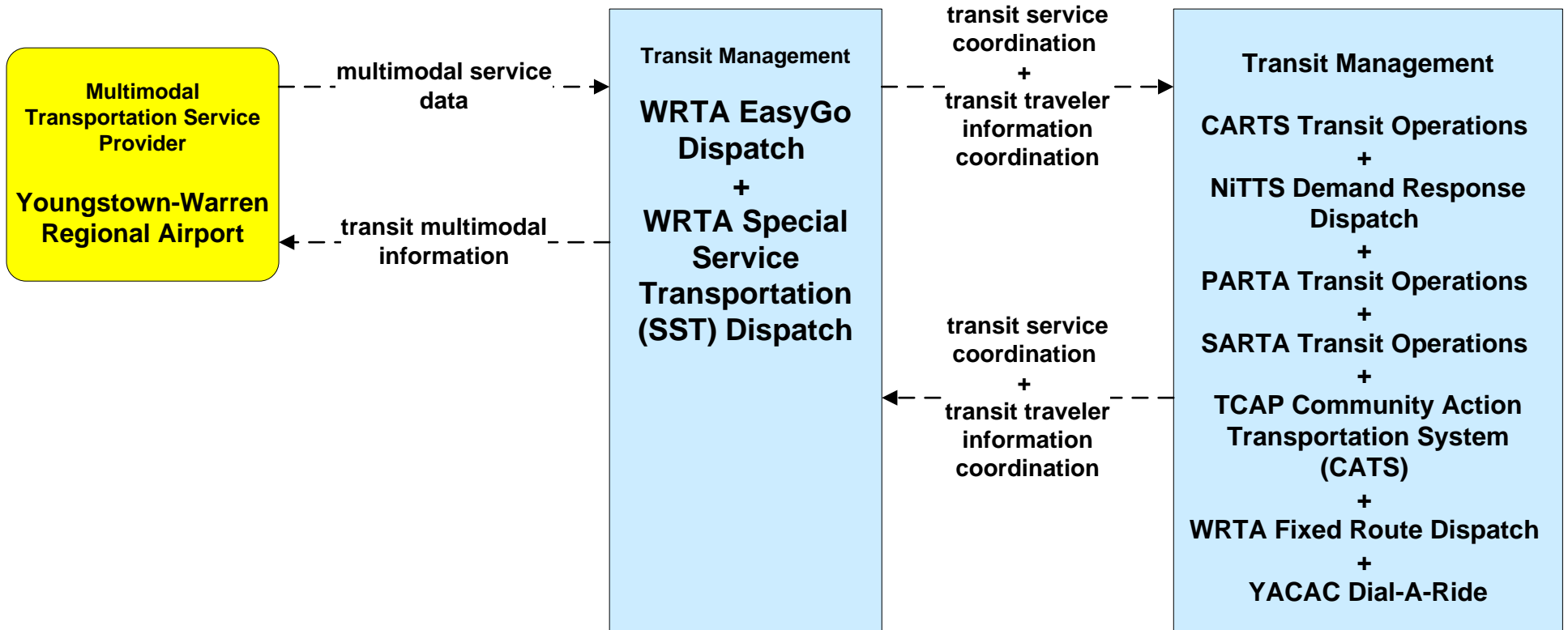
**APTS06 - Transit Vehicle Maintenance
WRTA / NiTTTS**



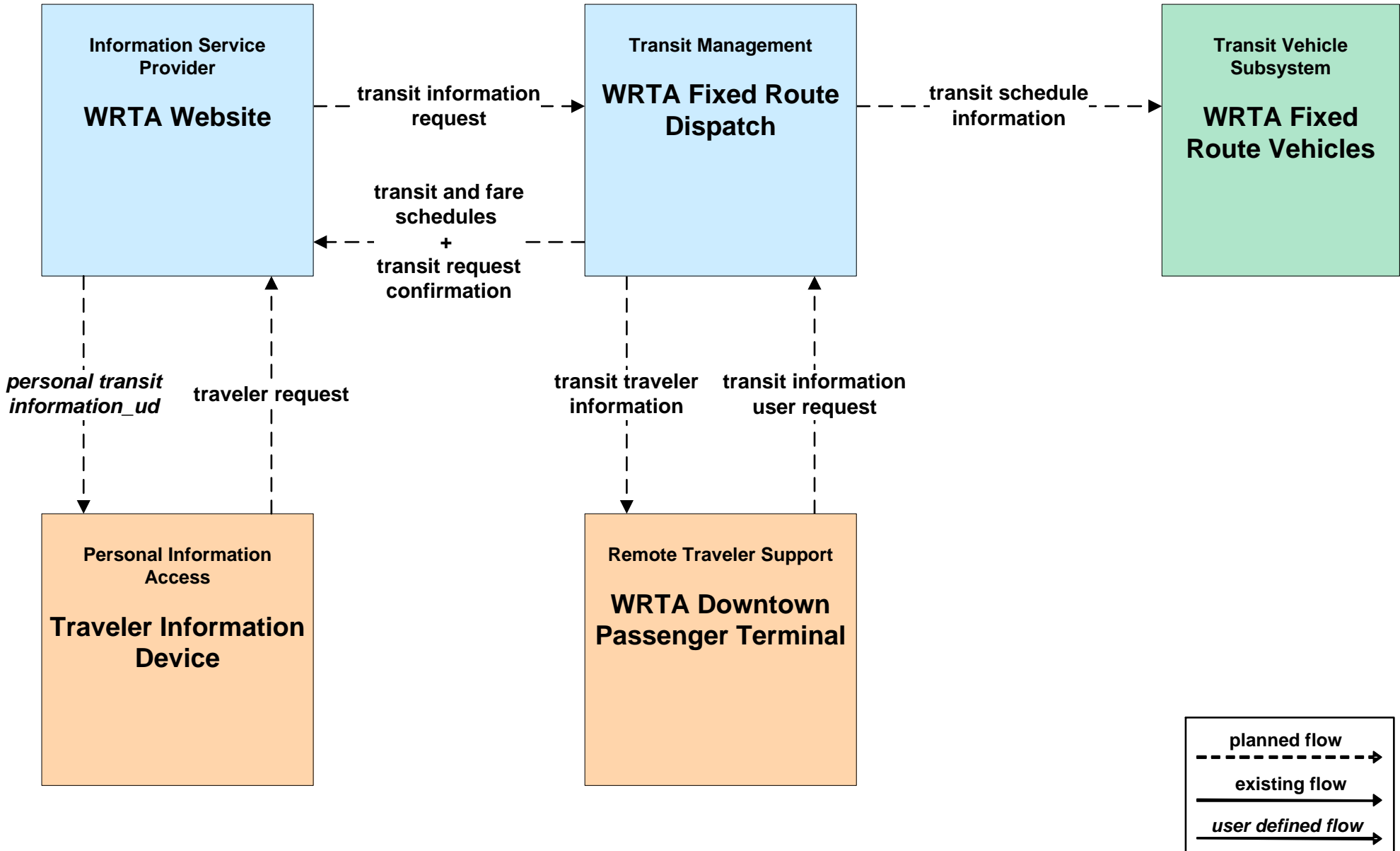
**APTS07 - Multimodal Coordination
WRTA Fixed Route**



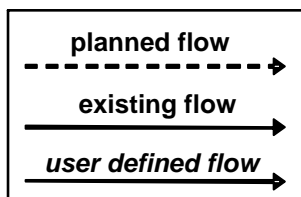
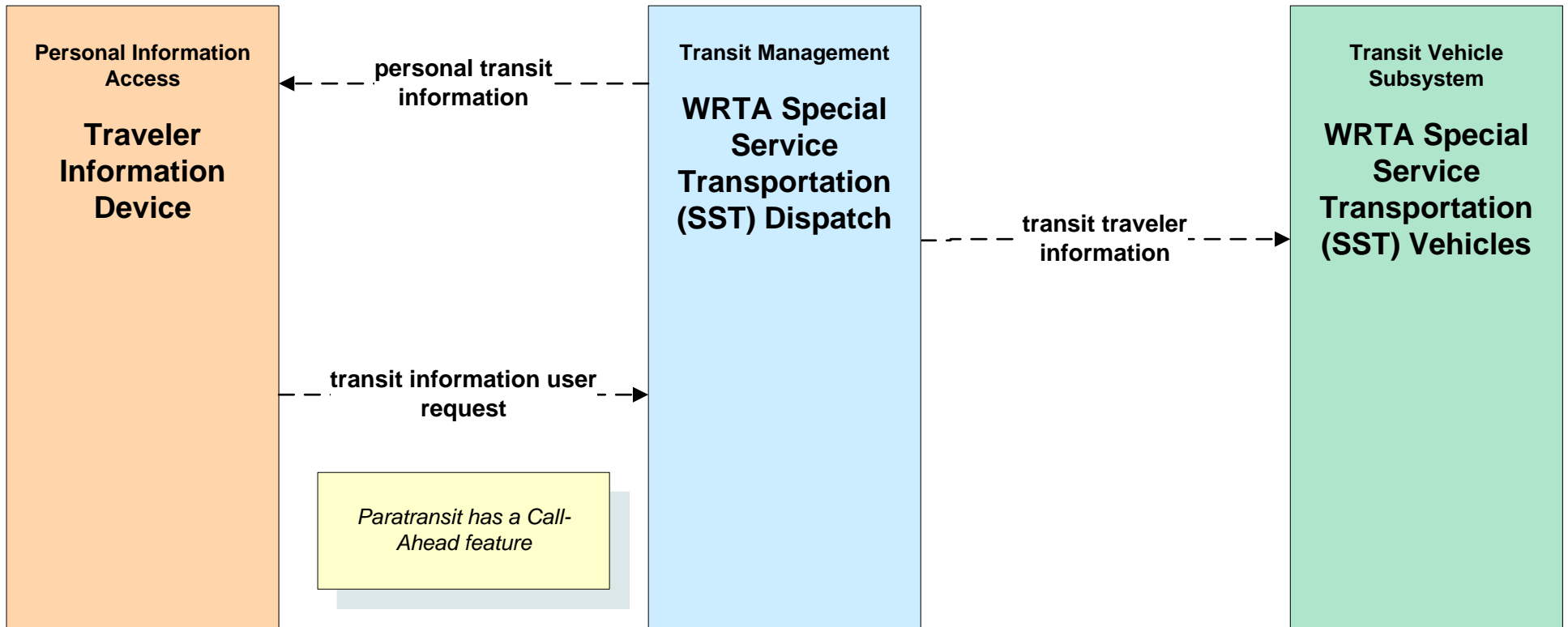
APTS07 - Multimodal Coordination WRTA Demand Response



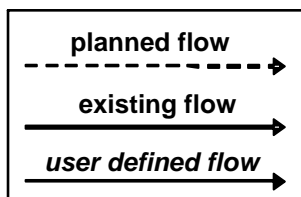
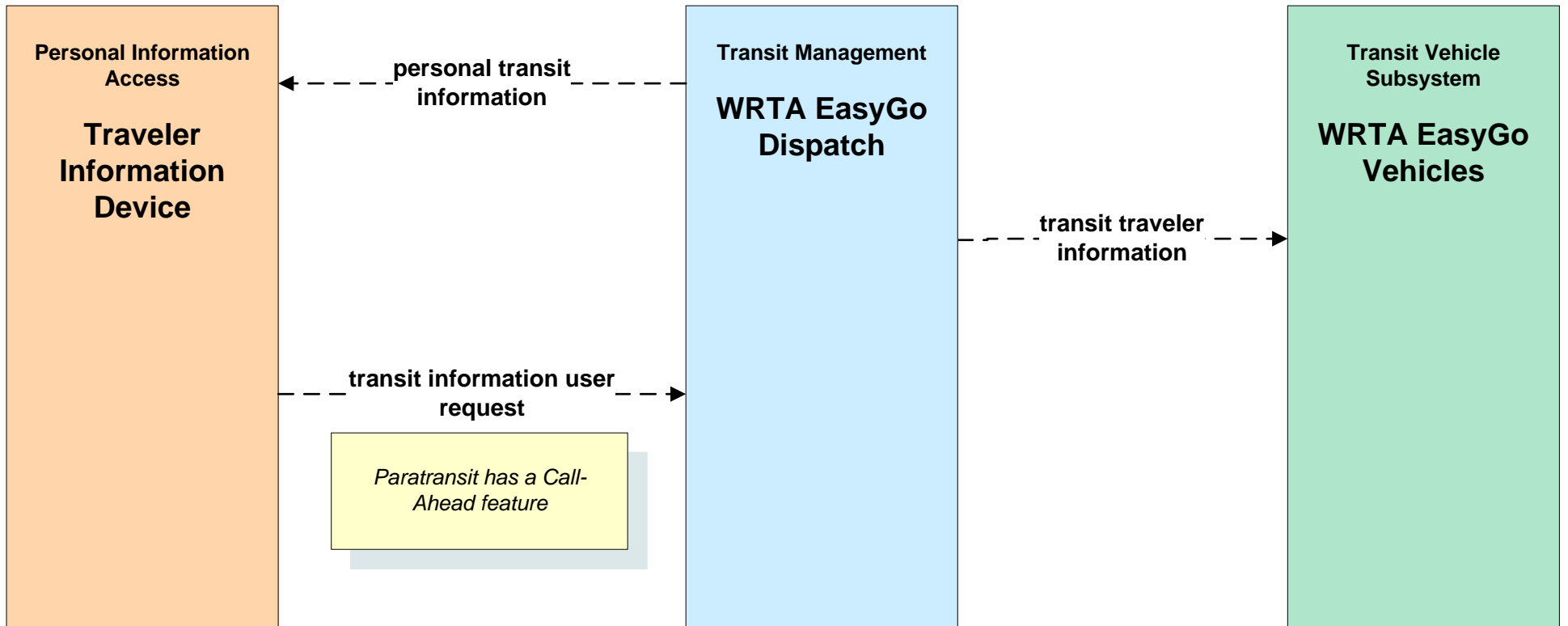
**APTS08 - Transit Traveler Information
WRTA**



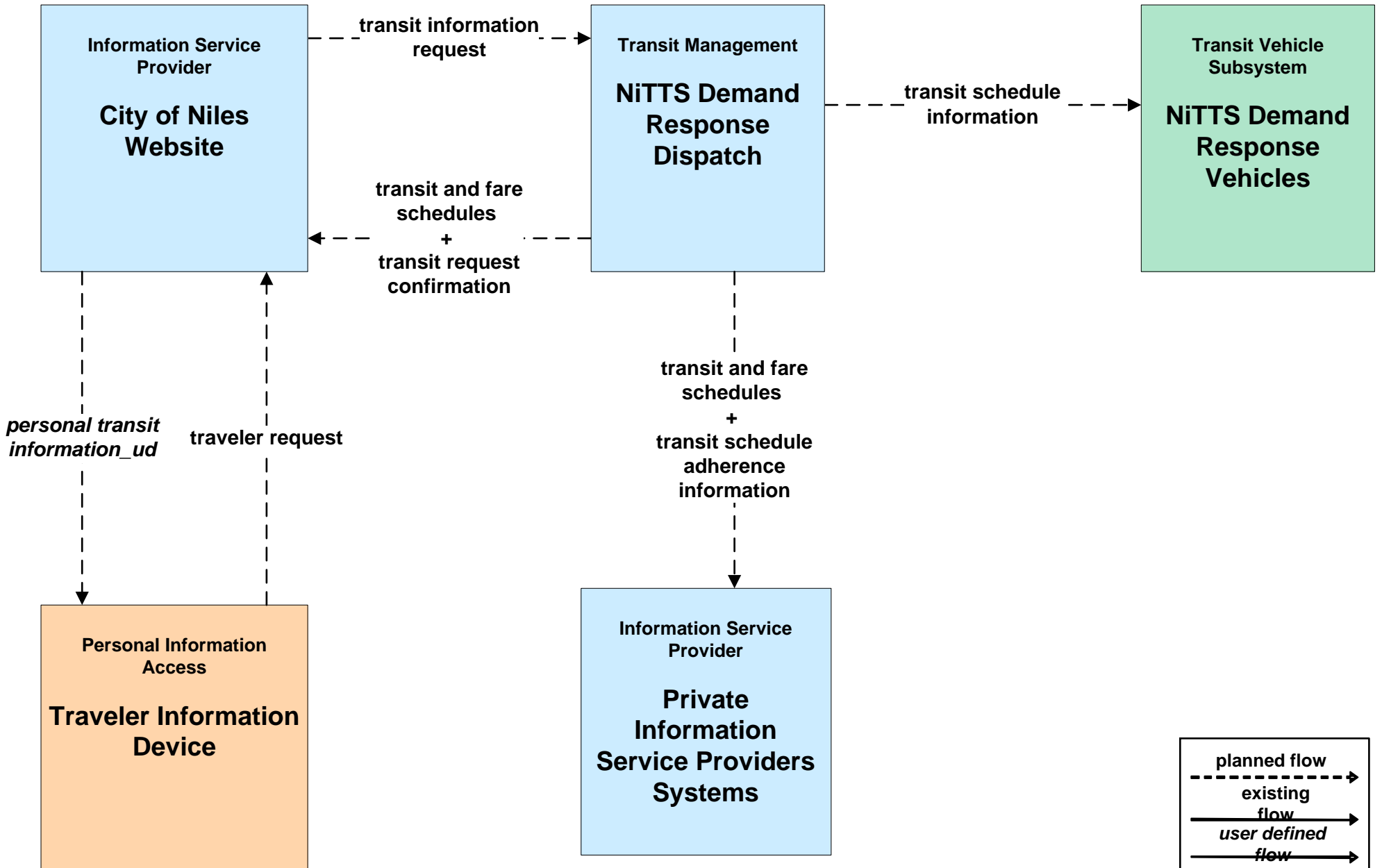
**APTS08 - Transit Traveler Information
WRTA SST**



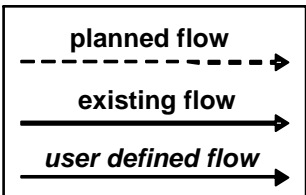
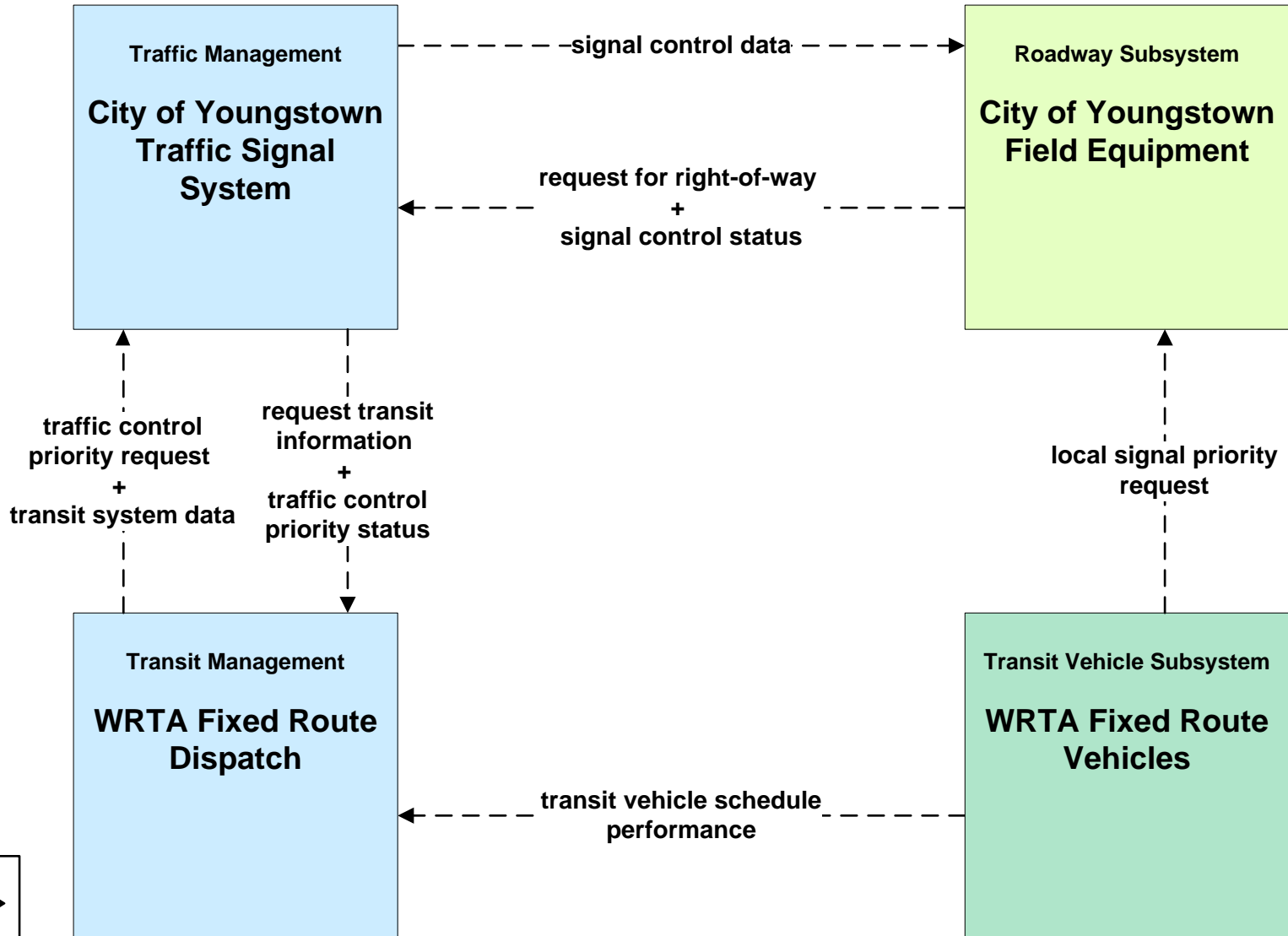
APTS08 - Transit Traveler Information WRTA EasyGo



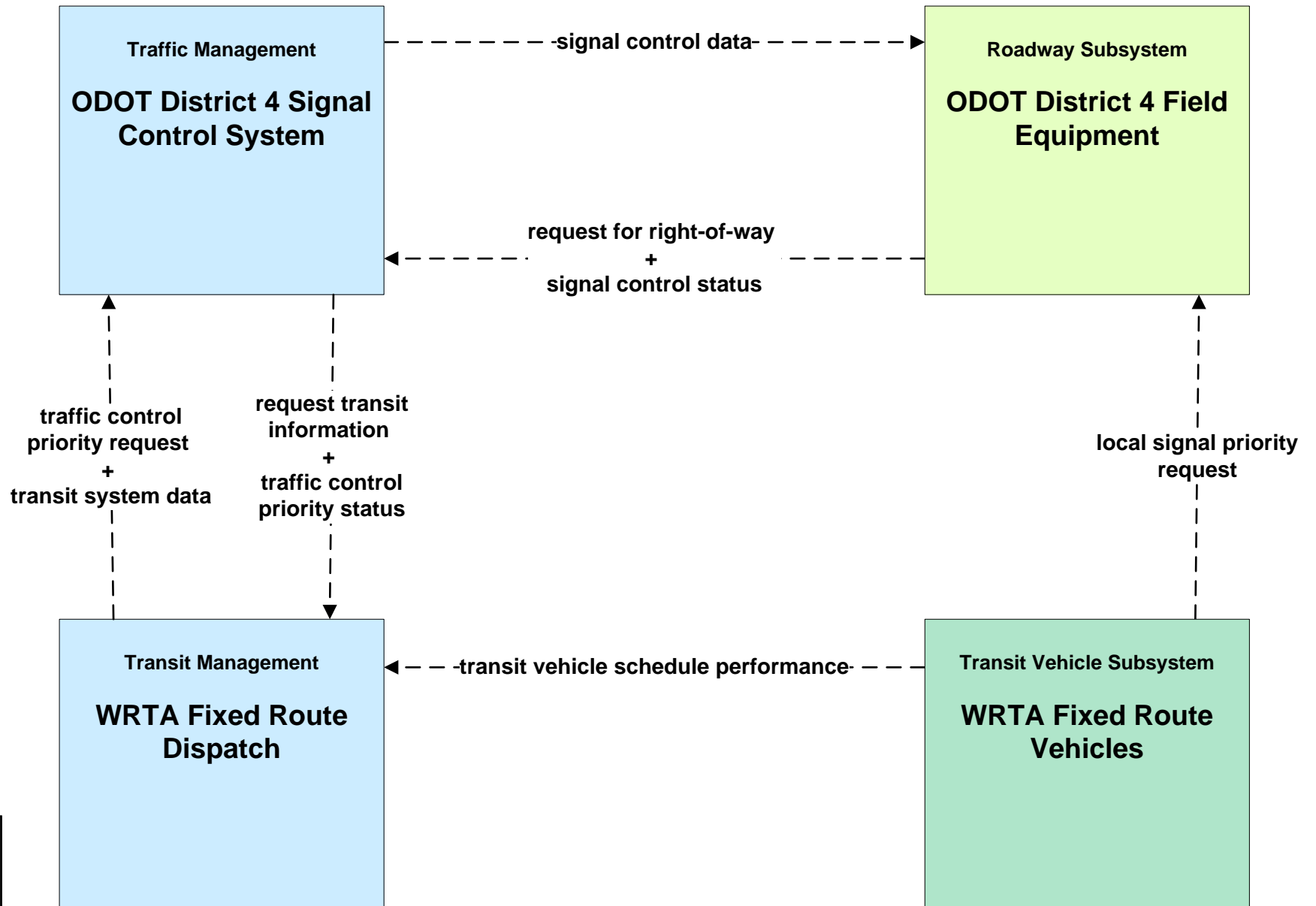
APTS08 - Transit Traveler Information NiTTTS



**APTS09 – Transit Signal Priority
WRTA**



**APTS09 - Transit Signal Priority
 ODOT/WRTA Transit Signal Priority**



LEGEND

- planned and future flow** (dashed line with arrow)
- existing flow** (solid line with arrow)
- user defined flow** (solid line with arrow)

**APTS10 - Transit Passenger Counting
WRTA**

