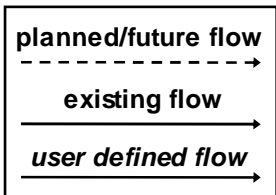
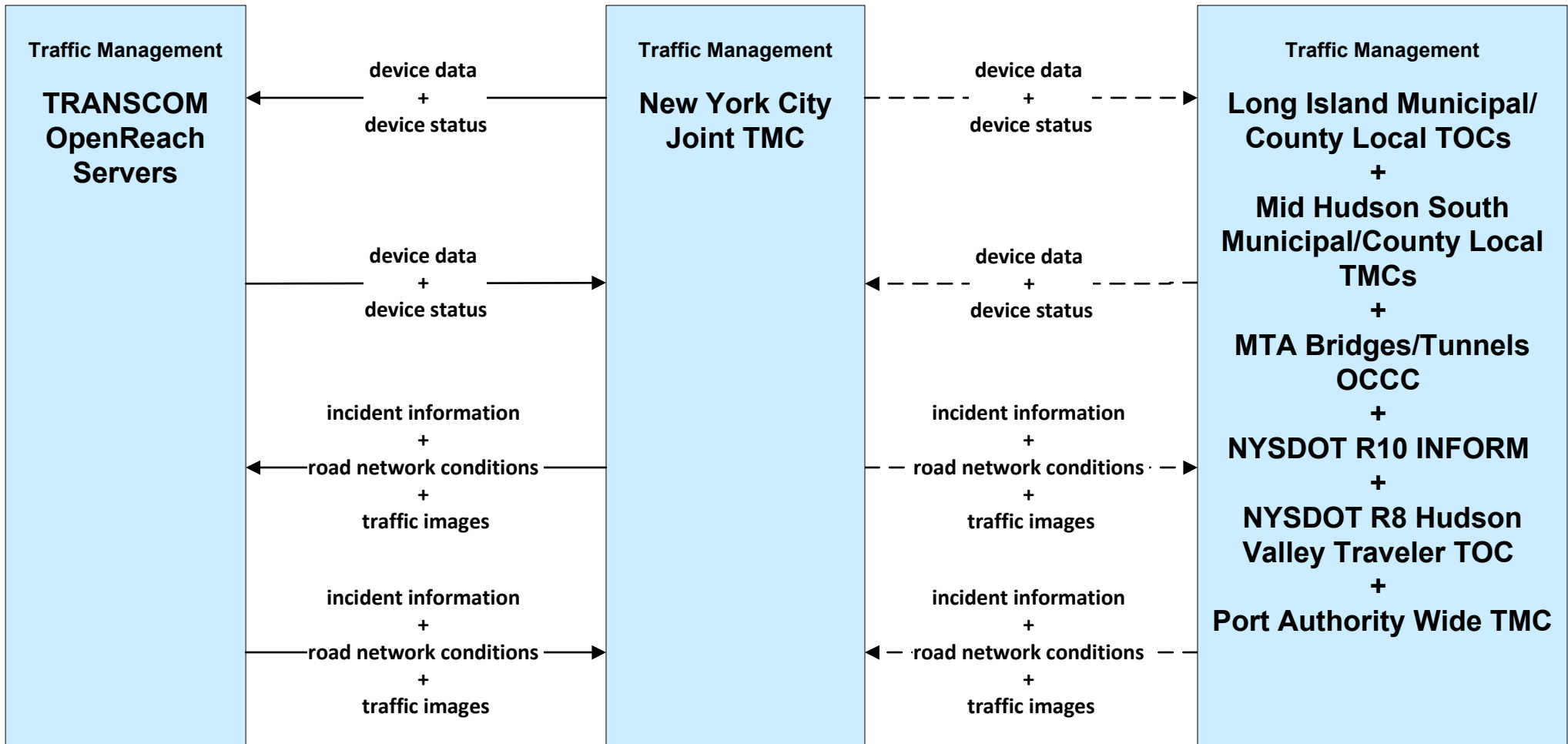
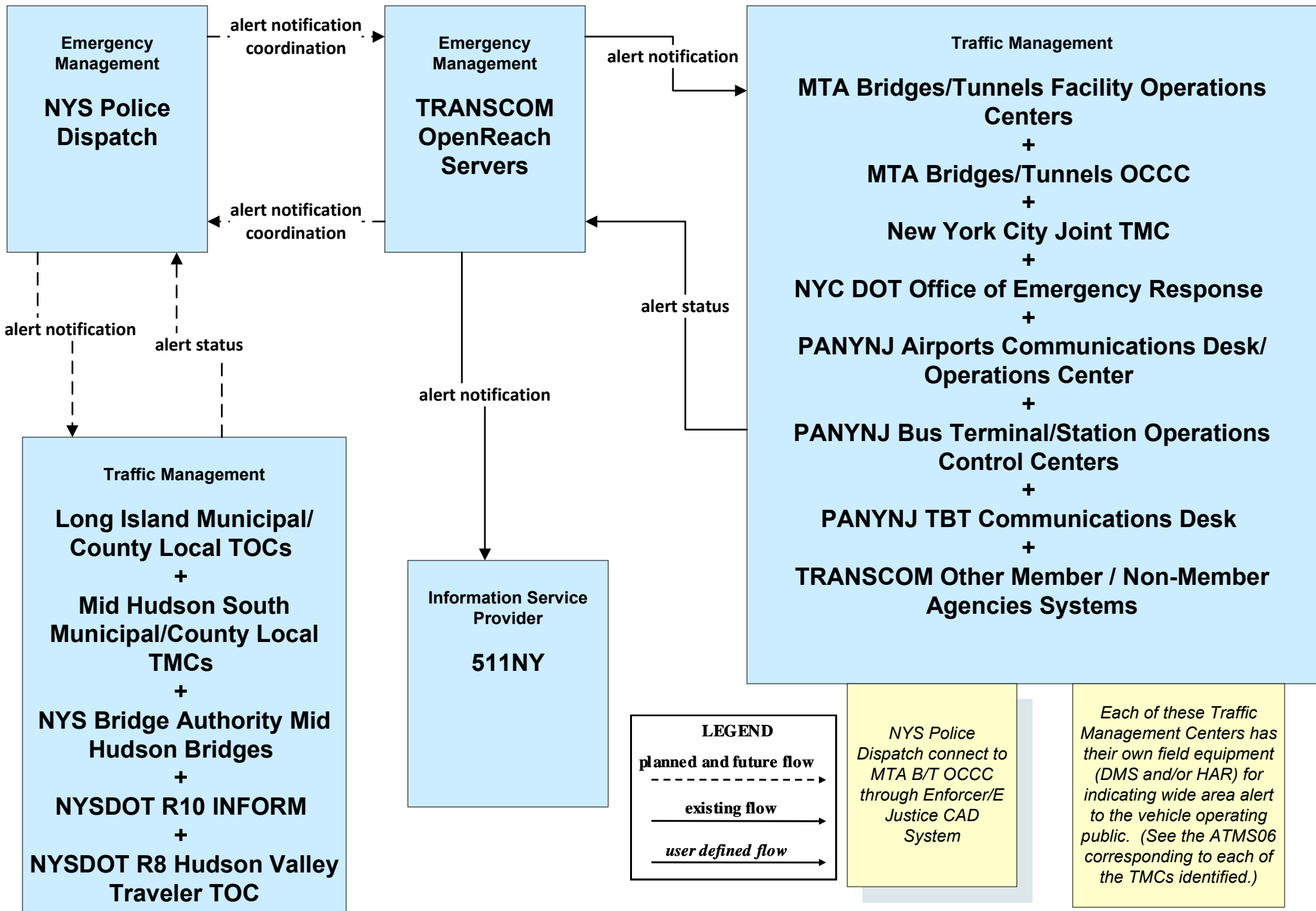


**ATMS07 - Regional Traffic Management
New York City Joint TMC (2 of 2)**



EM06 - Wide Area Alerts Amber Alerts



**MC08 - Workzone Management
TRANSCOM**

Maintenance and Construction Management

← - - -work zone information-

**MTA Bridges/
Tunnels Facility
Operations Centers**

+

**New York City Joint
TMC**

+

**NYS Bridge
Authority Mid
Hudson Bridges
Maintenance**

+

**PANYNJ TBT
Maintenance Unit**

Maintenance and Construction Management

**TRANSCOM
OpenReach
Servers**

Traffic Management

**Long Island Municipal/County Local
TOCs**

+

**Mid Hudson South Municipal/County Local
TMCs**

+

**MTA Bridges/Tunnels Facility Operations
Centers**

+

MTA Bridges/Tunnels OCCC

+

New York City Joint TMC

+

**NYS Bridge Authority Mid Hudson
Bridges**

+

NYSDOT R10 INFORM

+

NYSTA TSOC

+

**PANYNJ Airports Communications Desk/
Operations Center**

+

Port Authority Wide TMC

+

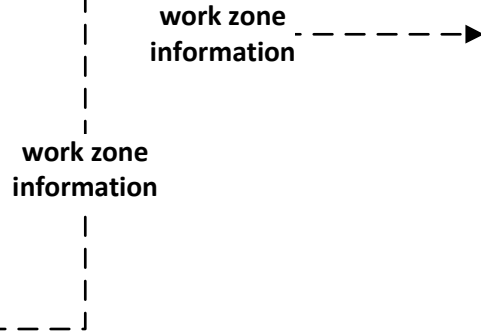
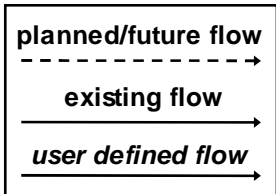
**PANYNJ Port Commerce Operations
Control Center**

+

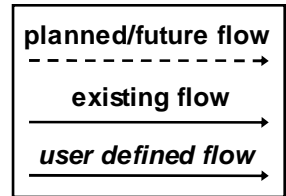
PANYNJ TBT Communications Desk

Media

**Print and
Broadcast Media**



**MC10 - Maintenance and Construction Activity Coordination
TRANSCOM**



work plan coordination

maint and constr work plans

work plan coordination

maint and constr work plans

