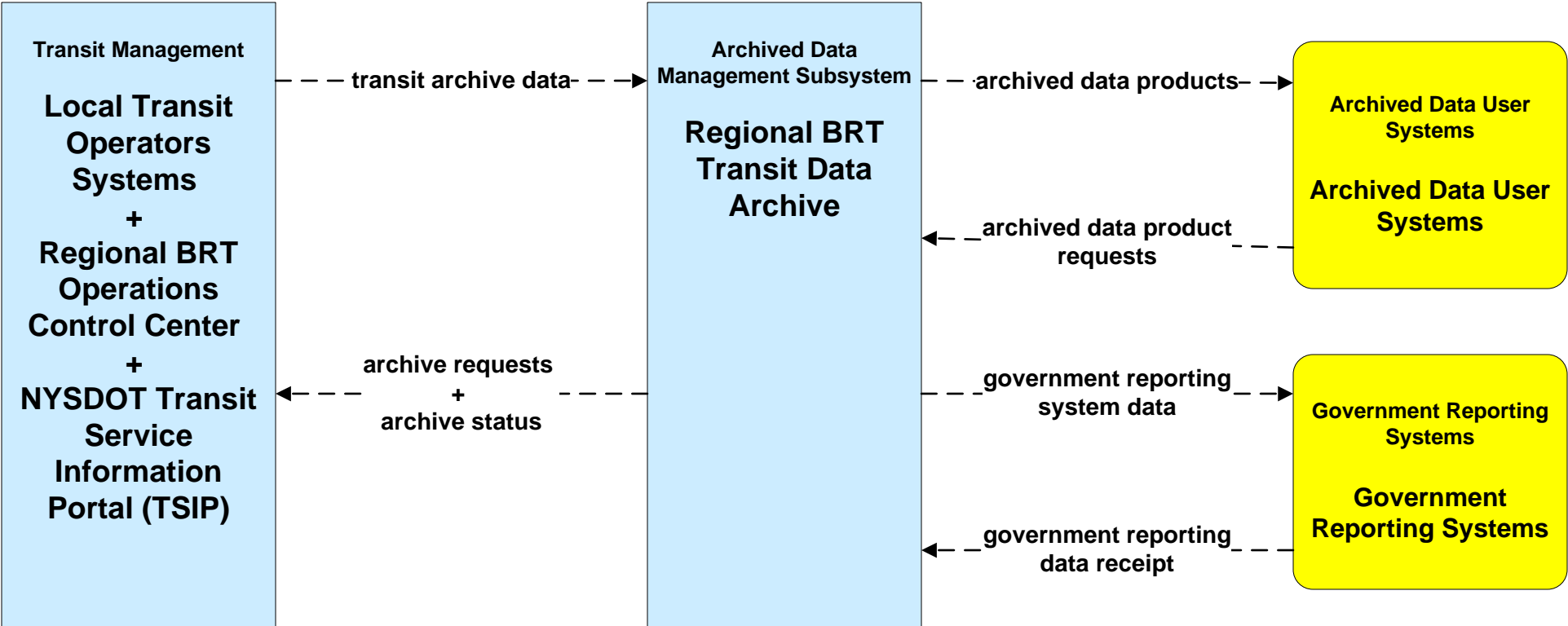
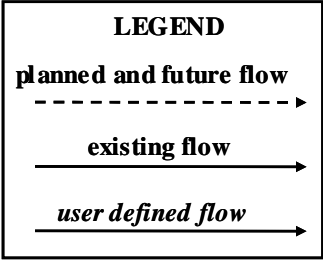


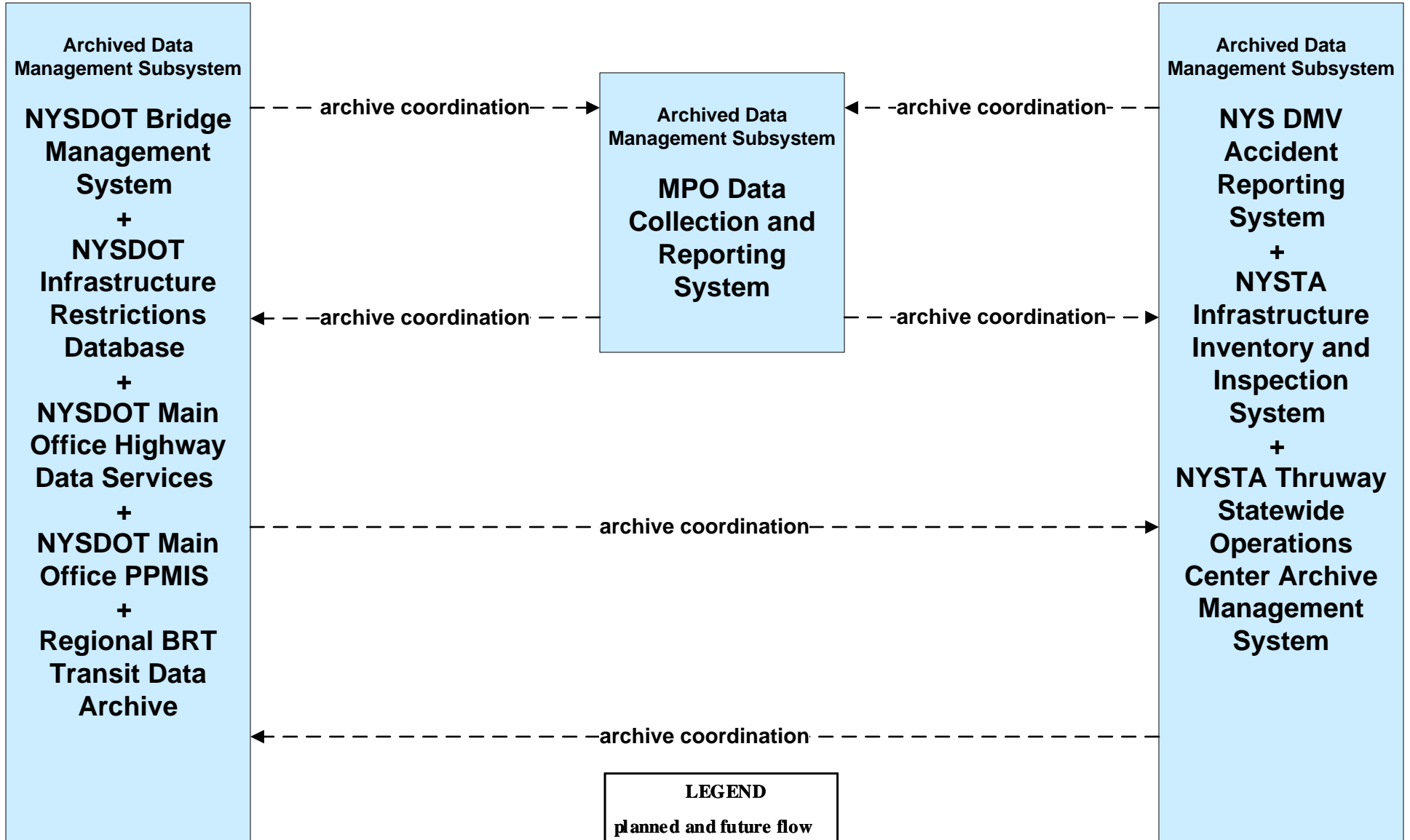
**AD2 - ITS Data Warehouse  
 NYSDOT Transit Data Archive**



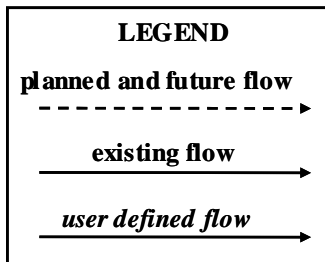
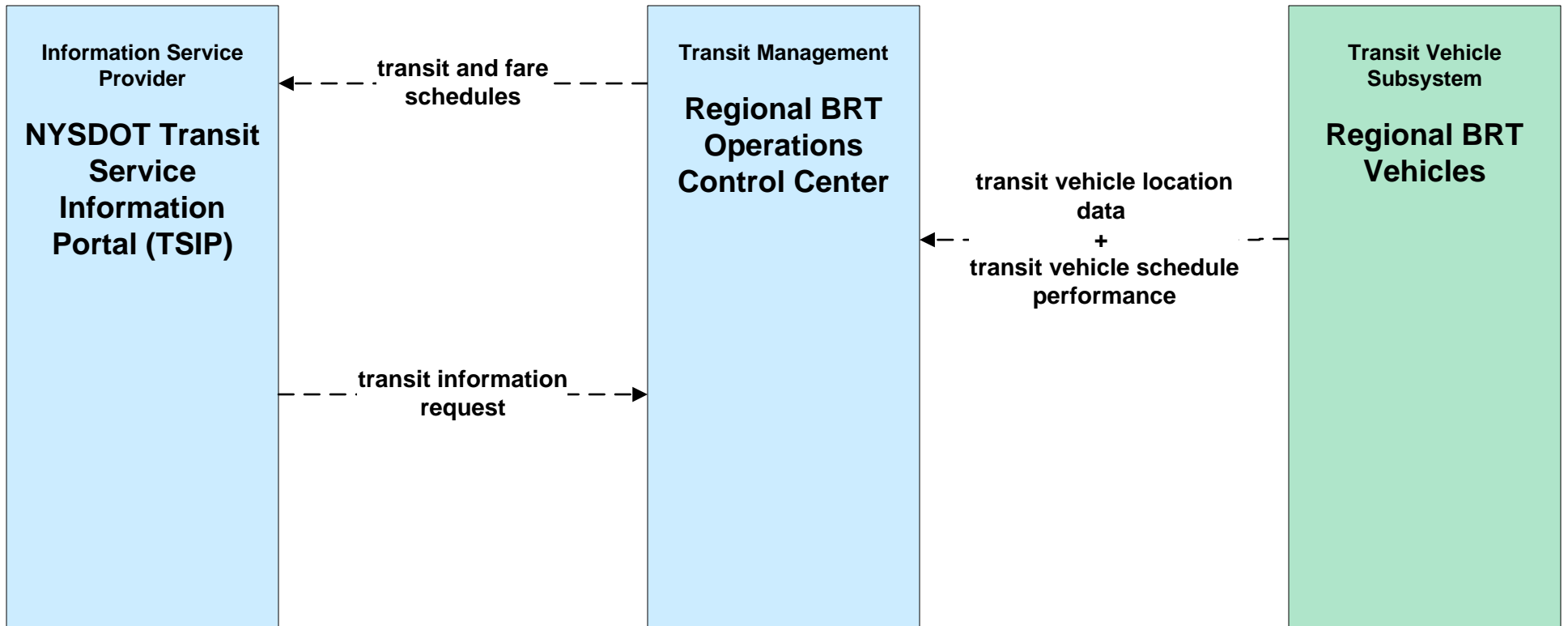
**Users include:**  
 Federal Agencies  
 NYSDOT  
 System Designers  
 Public Requests



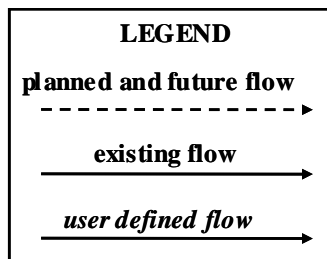
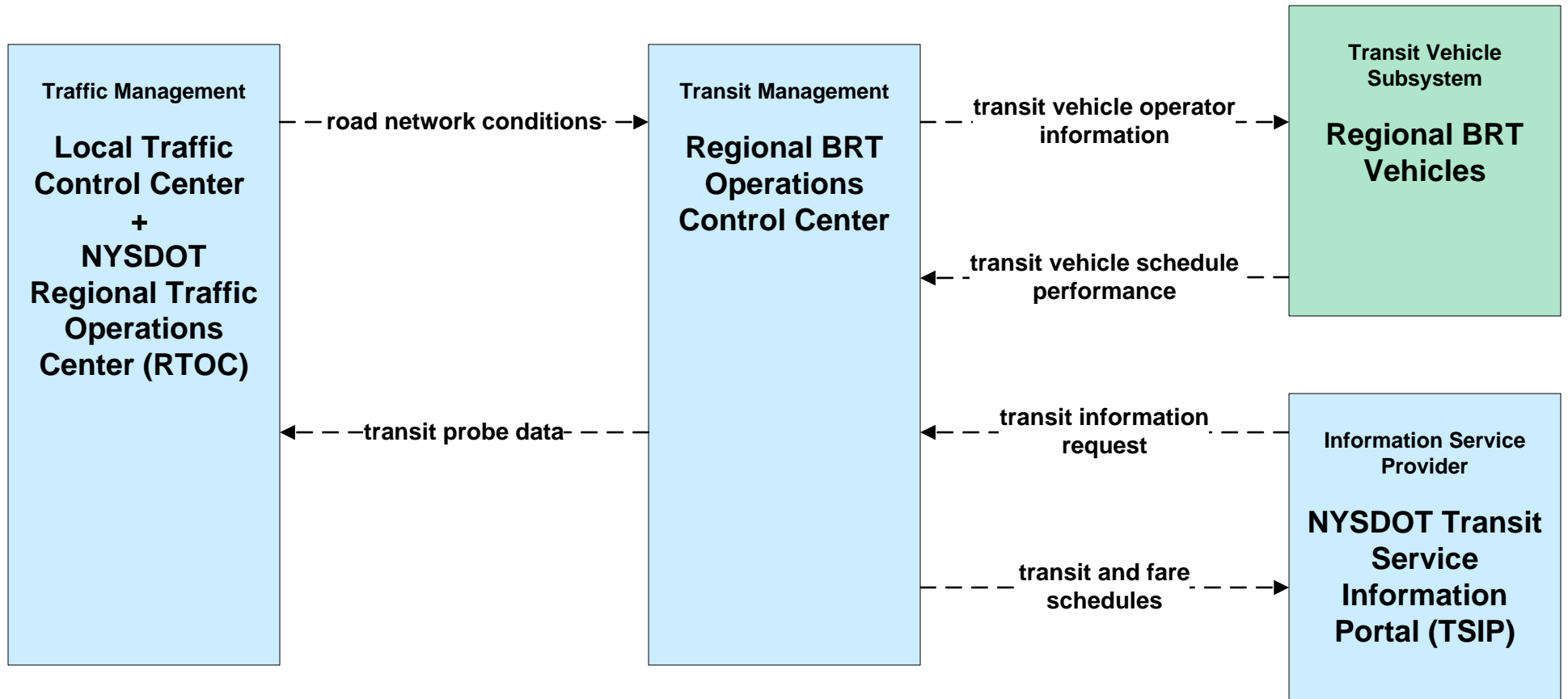
**AD3 - ITS Virtual Data Warehouse  
Archive Data Sharing Network**



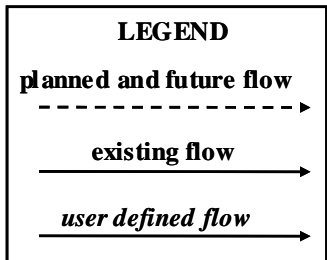
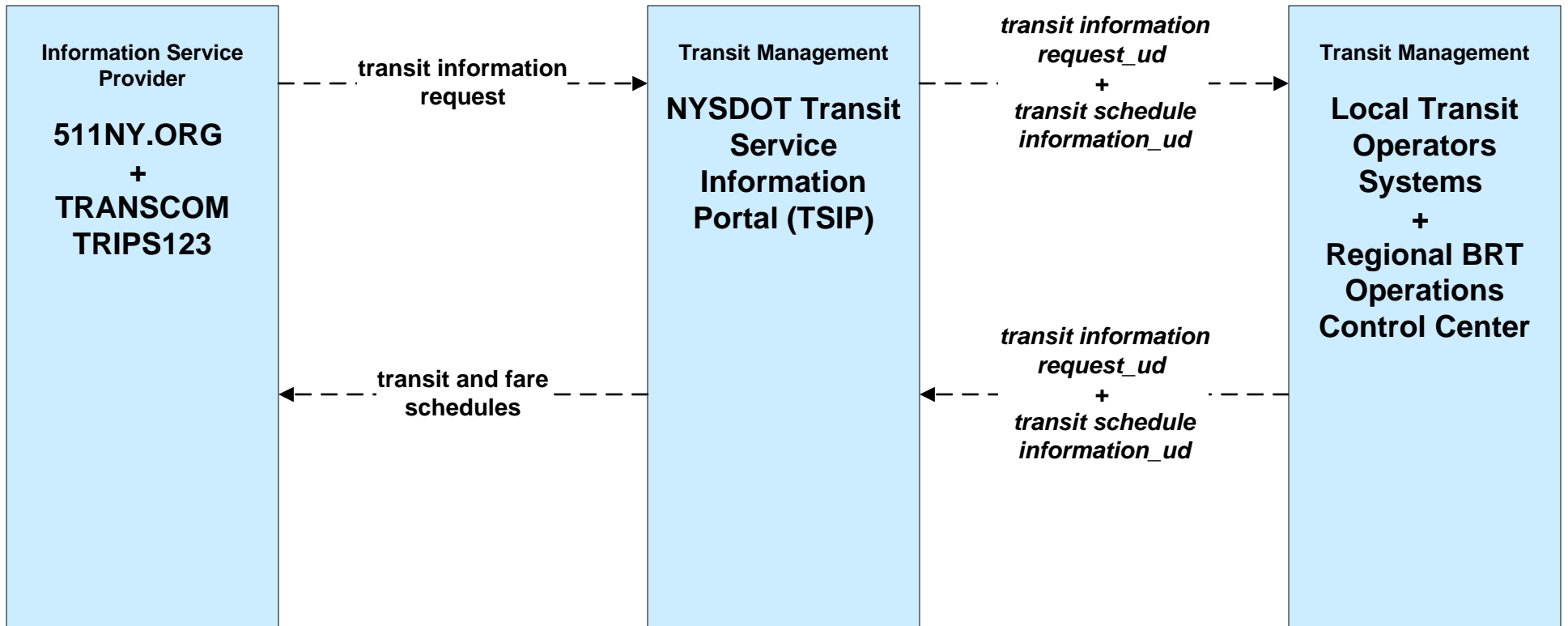
# APTS01 - Transit Vehicle Tracking Regional BRT



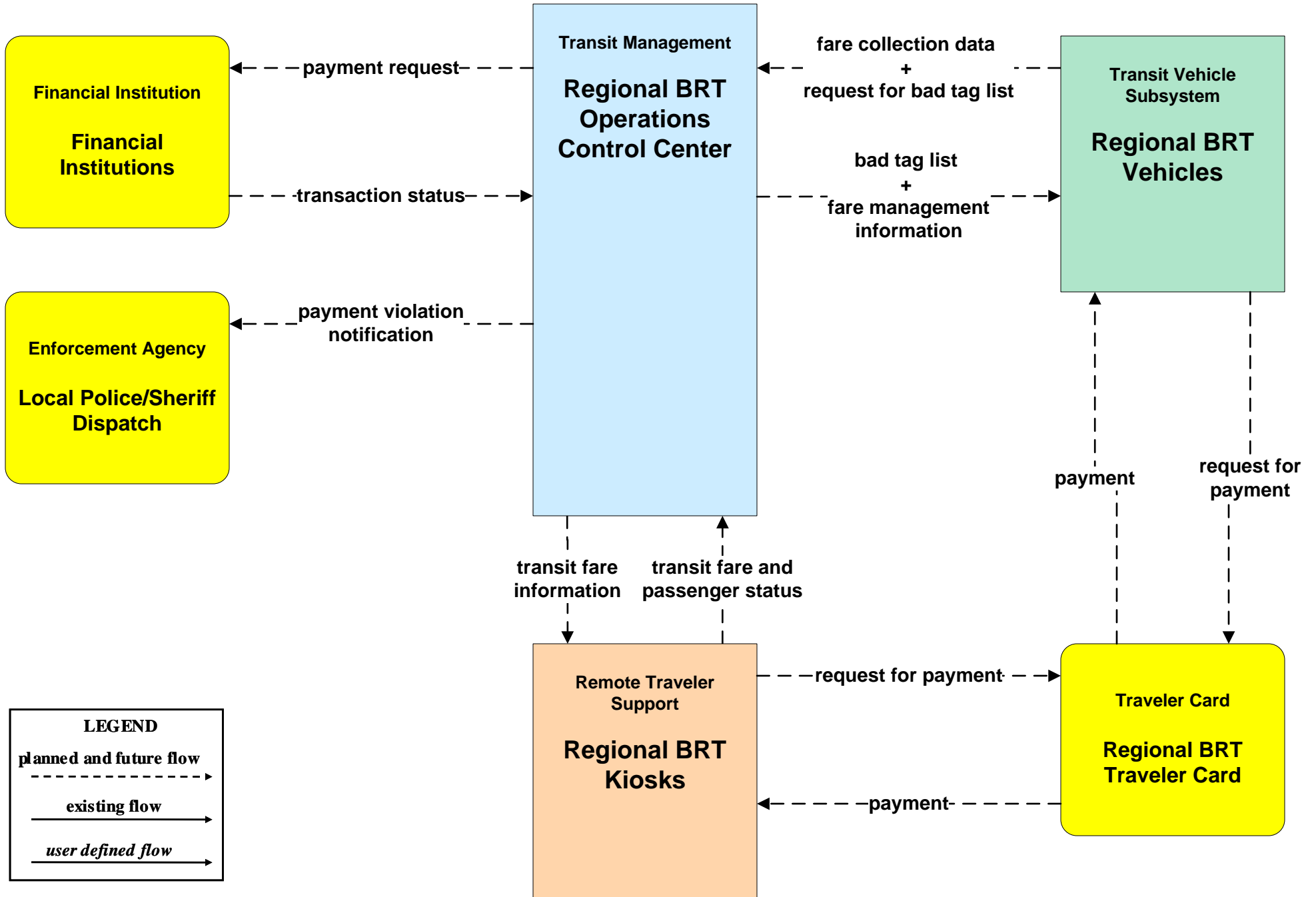
# APTS02 - Transit Fixed-Route Operations Regional BRT



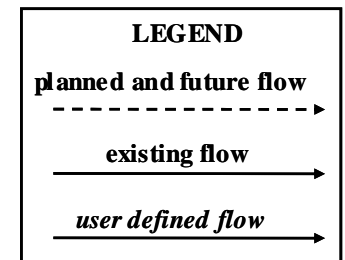
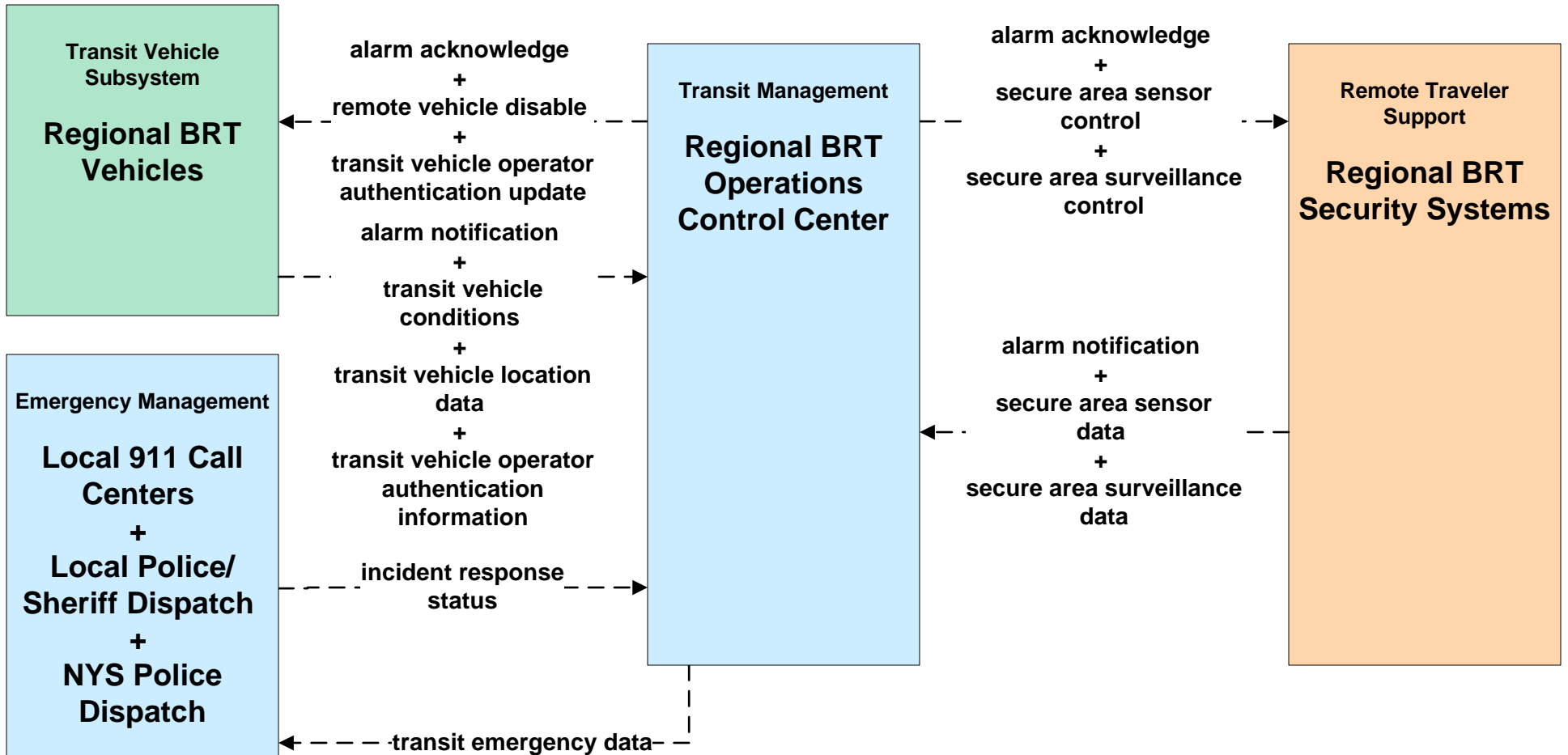
**APTS02 - Transit Fixed-Route Operations  
NYSDOT TSIP**



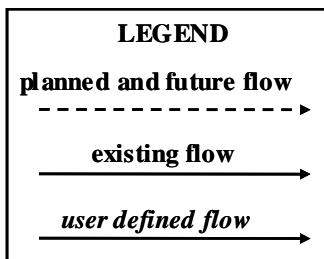
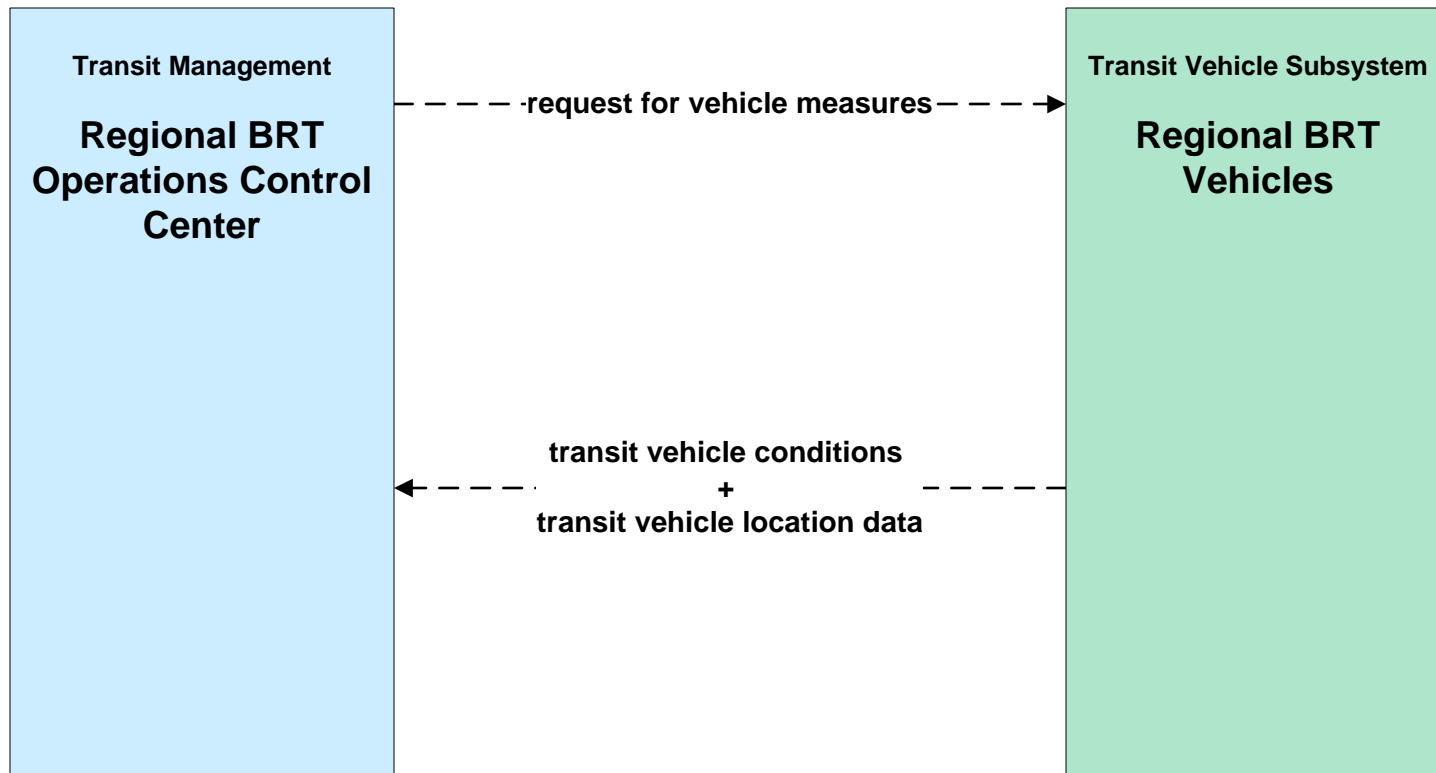
# APTS04 - Transit Passenger and Fare Management Regional BRT



# APTS05 - Transit Security Regional BRT

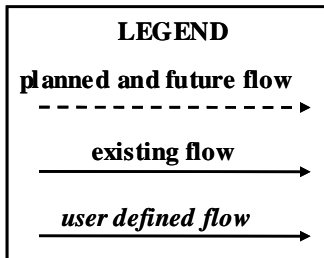
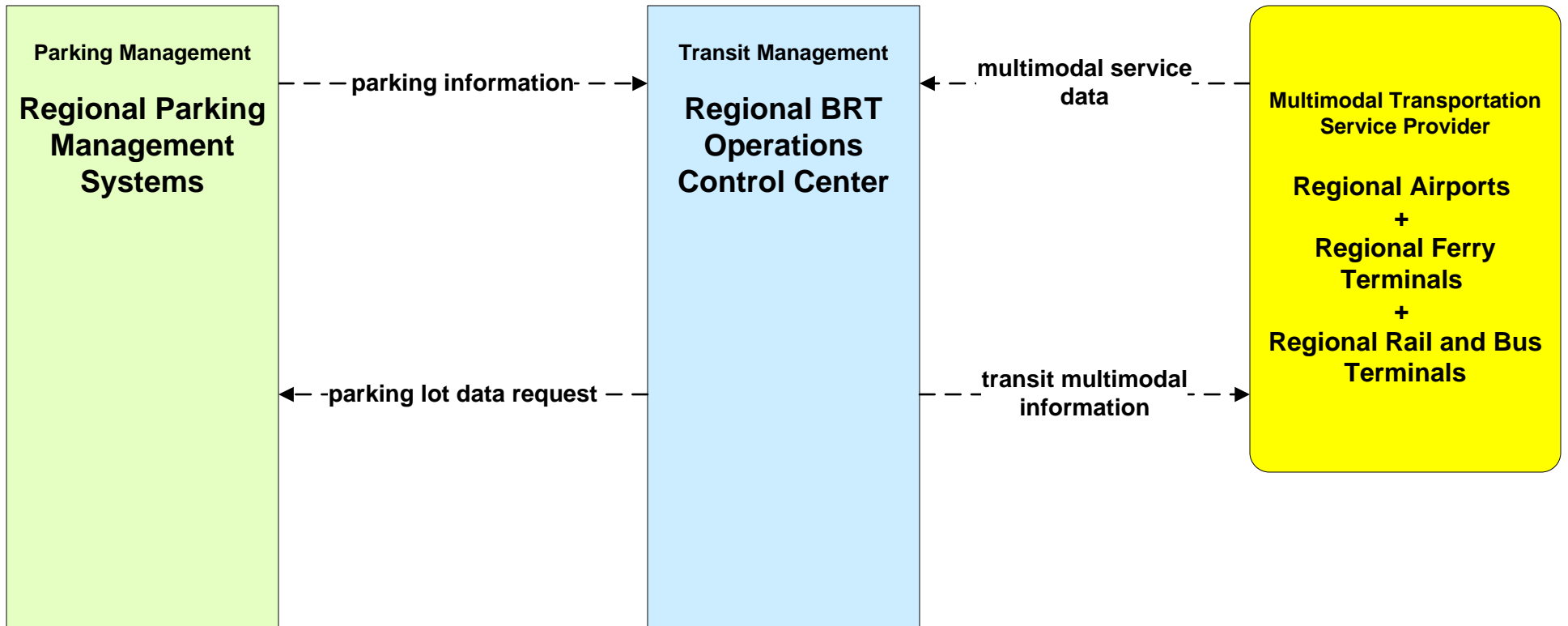


**APTS06 - Transit Maintenance  
Regional BRT**

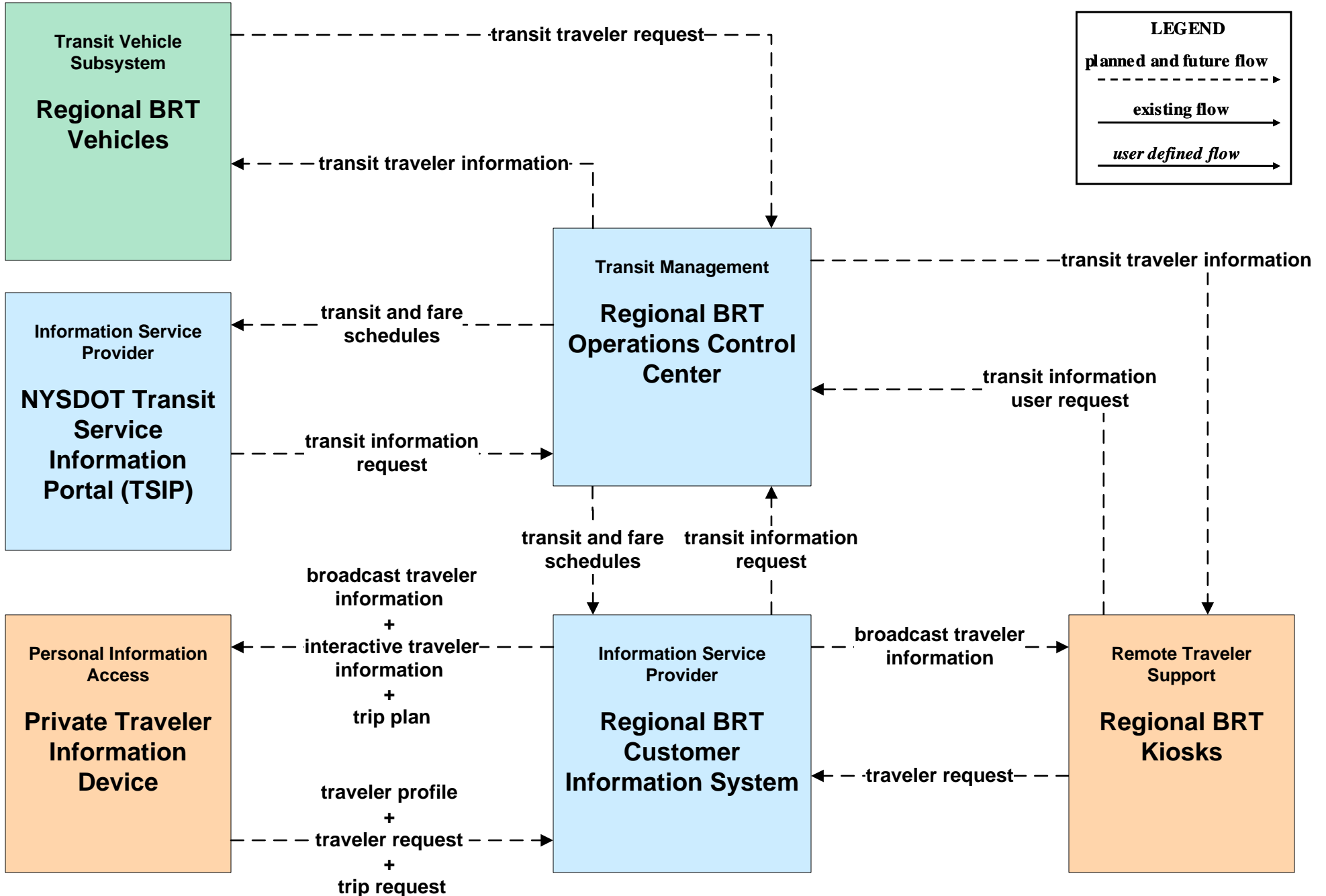




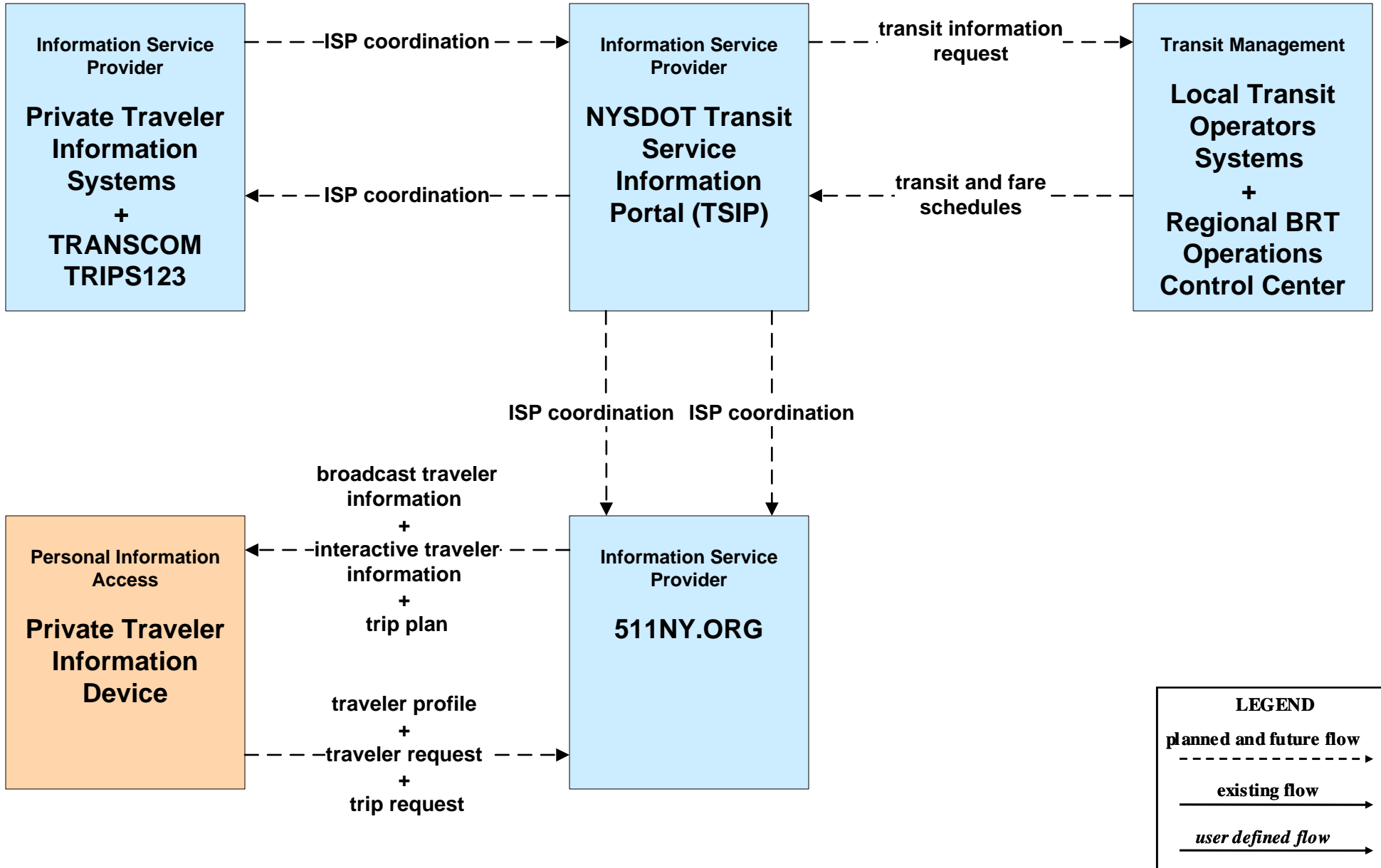
# APTS07 - Multi-modal Coordination Regional BRT



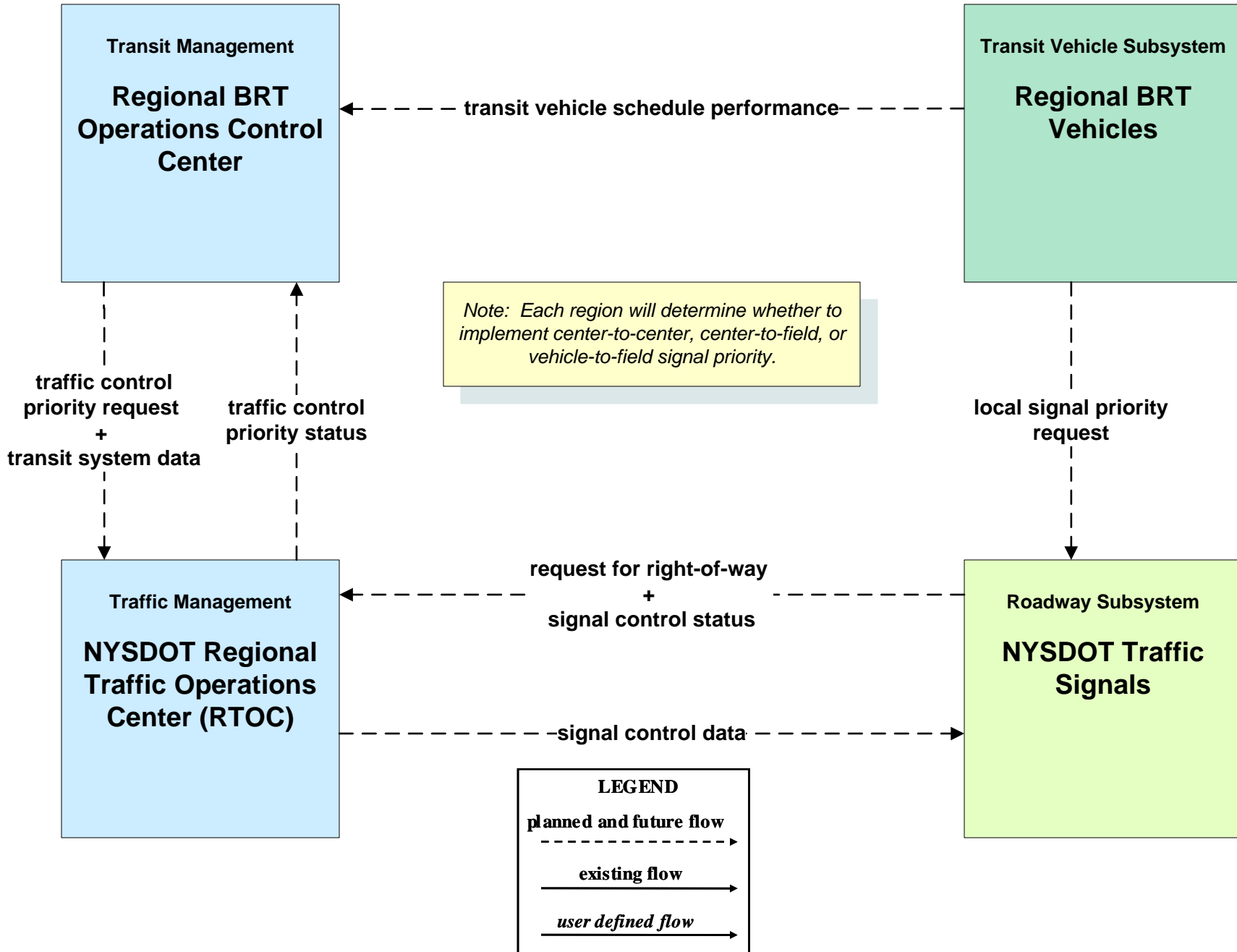
# APTS08 - Transit Traveler Information Regional BRT



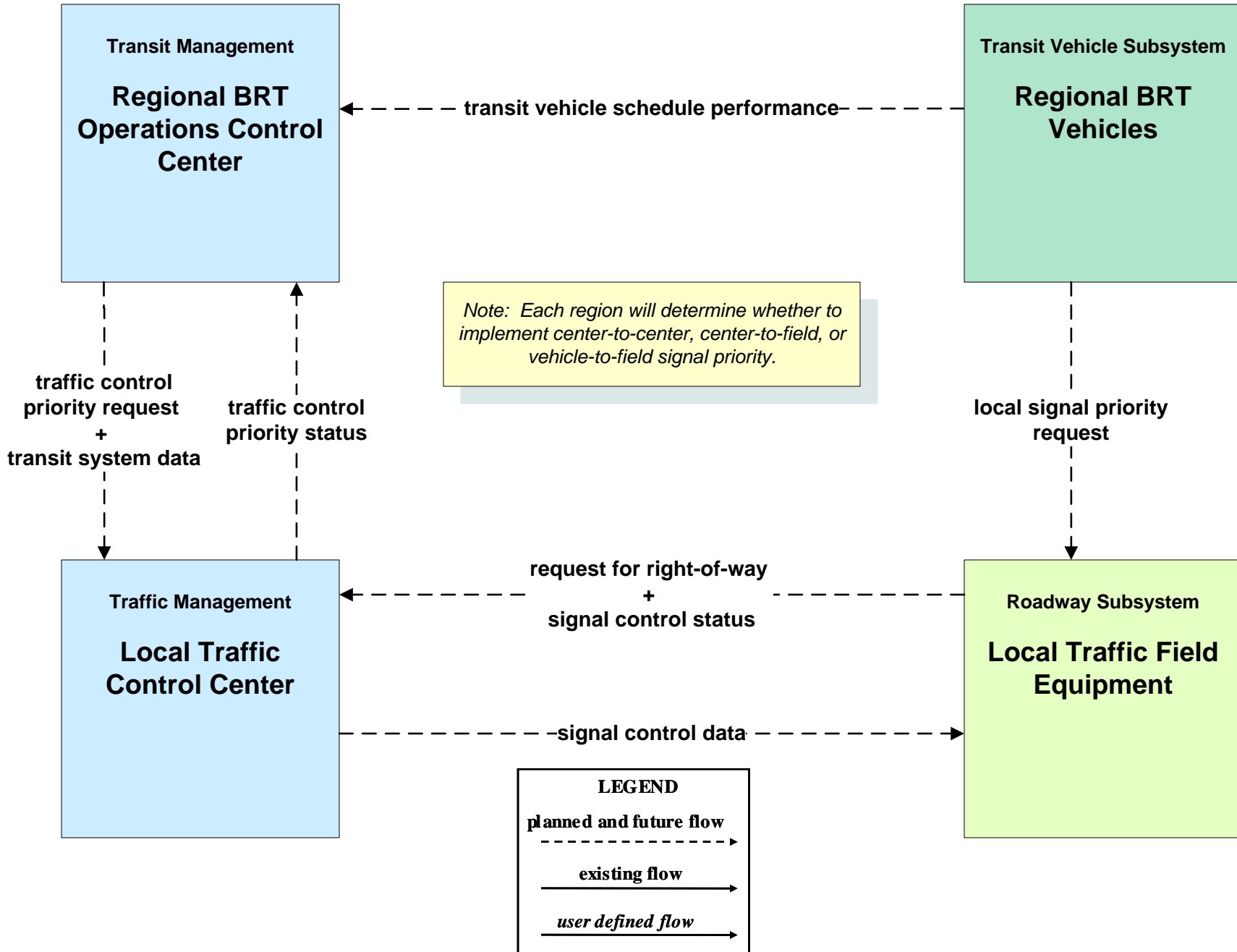
**APTS08 - Transit Traveler Information  
 NYSDOT TSIP / 511NY.ORG**



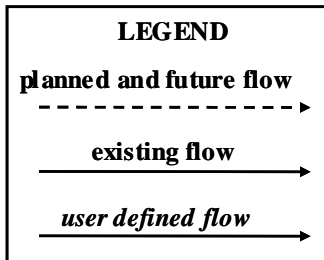
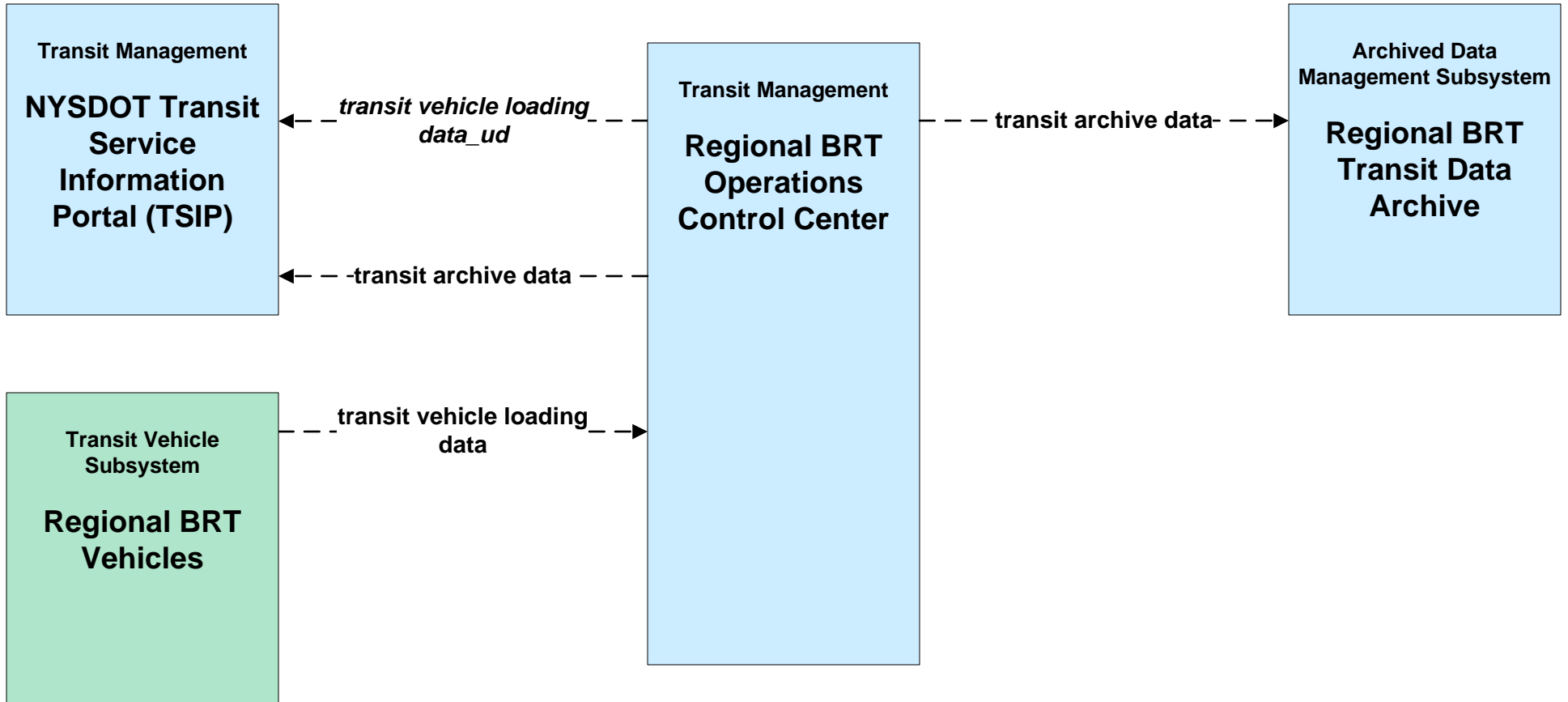
# APTS09 – Transit Signal Priority Regional BRT



# APTS09 – Transit Signal Priority Regional BRT



**APTS10 - Transit Passenger Counting  
NYSDOT TSIP / Regional BRT**



**ATIS01 - Broadcast Traveler Information**  
**511NY.ORG – Incidents (2 of 3)**

