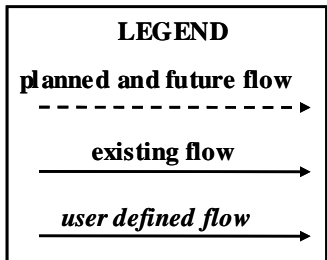
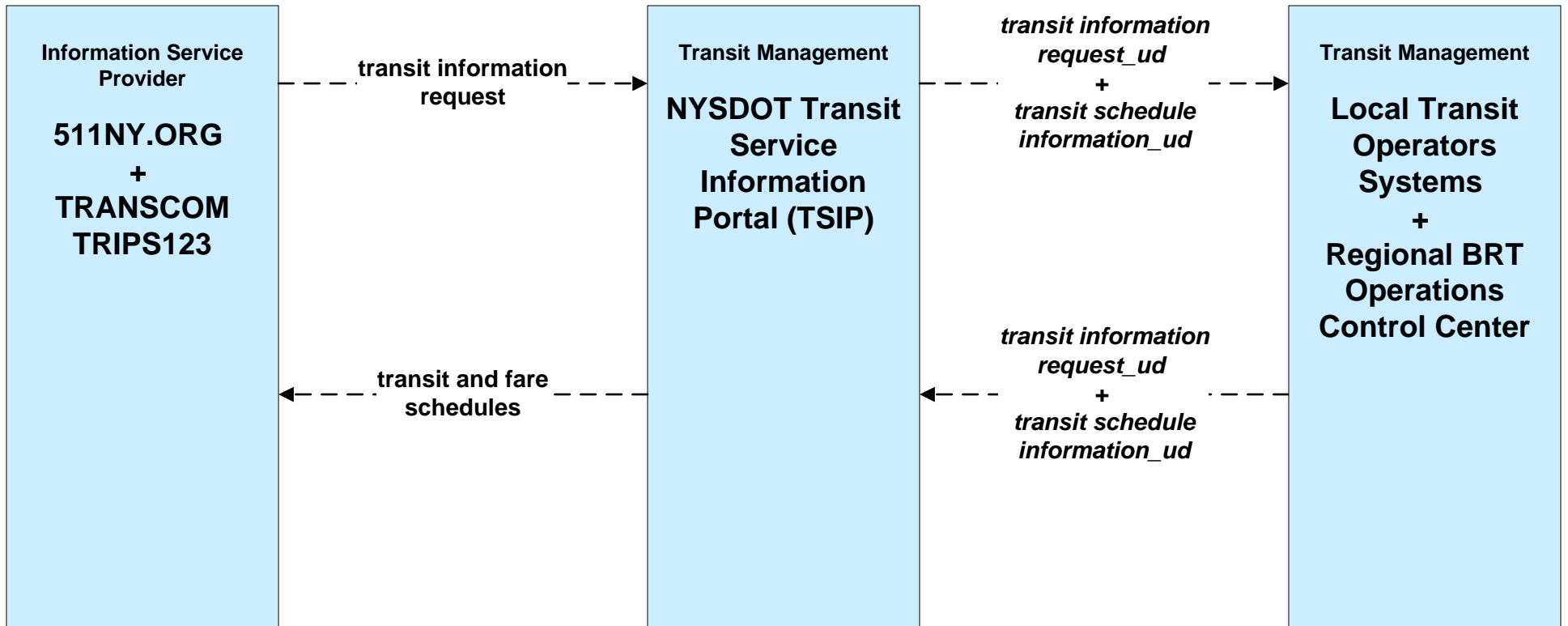
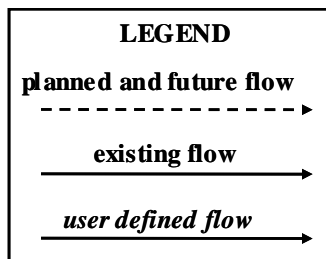
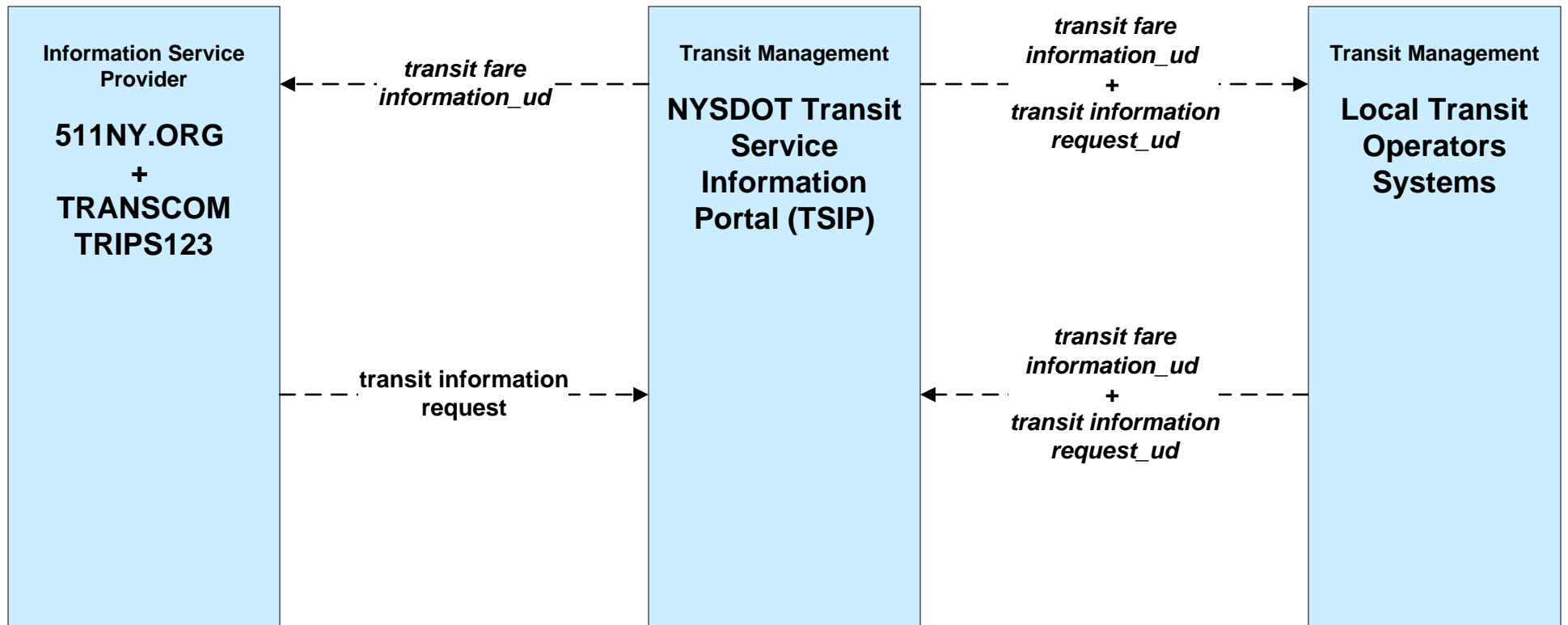


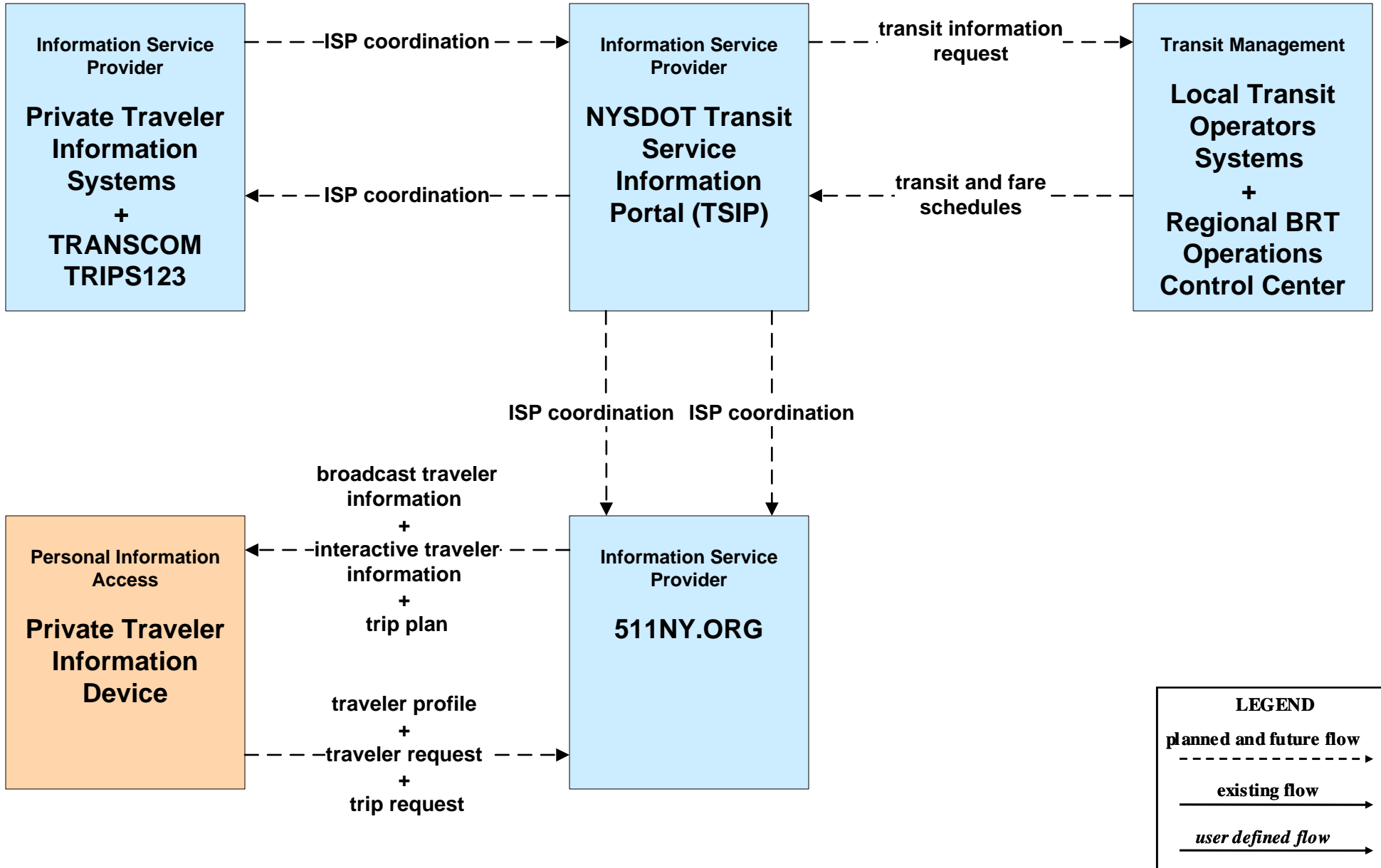
**APTS02 - Transit Fixed-Route Operations  
NYSDOT TSIP**



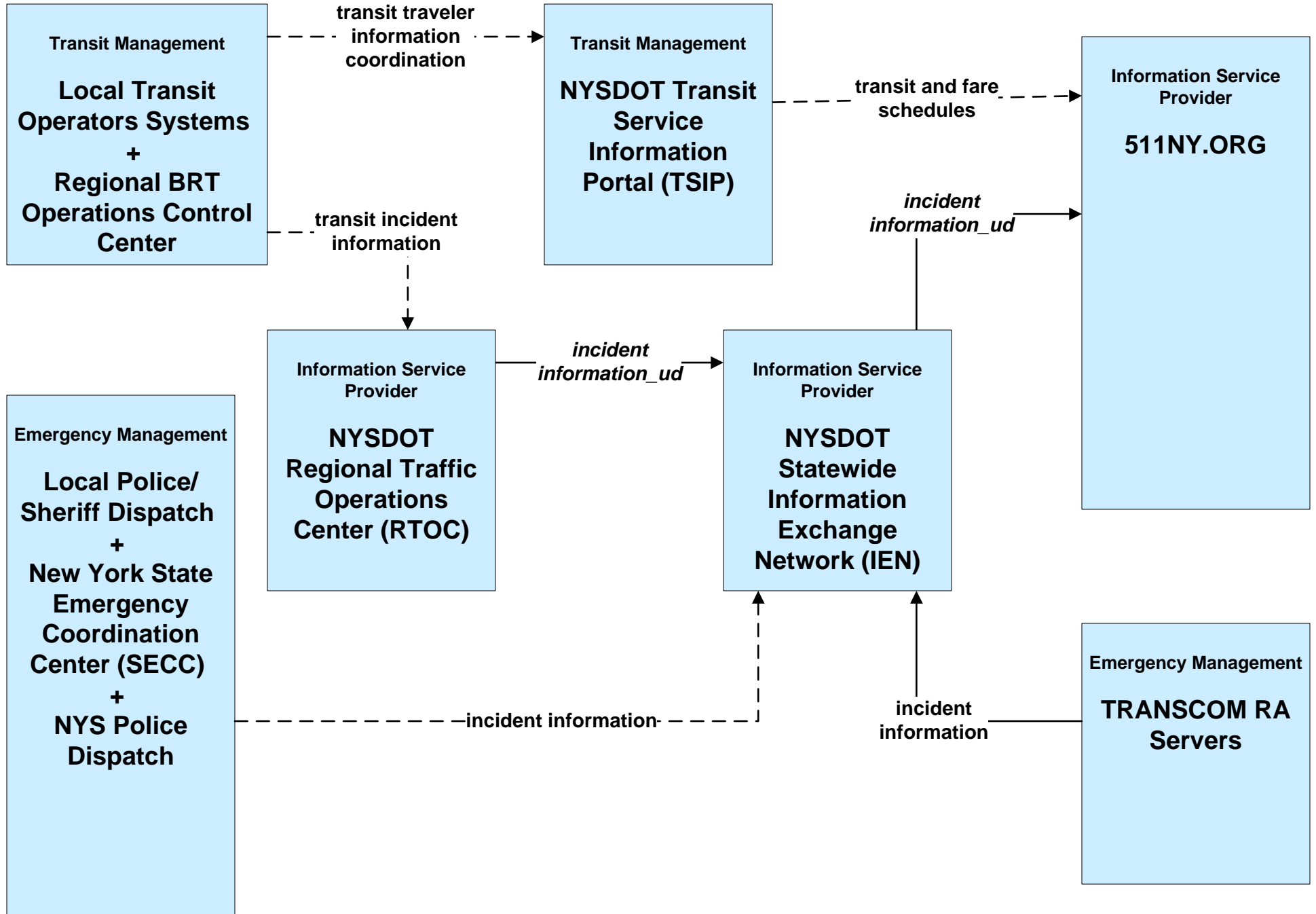
**APTS04 - Transit Fare Collection Management  
NYSDOT TSIP**



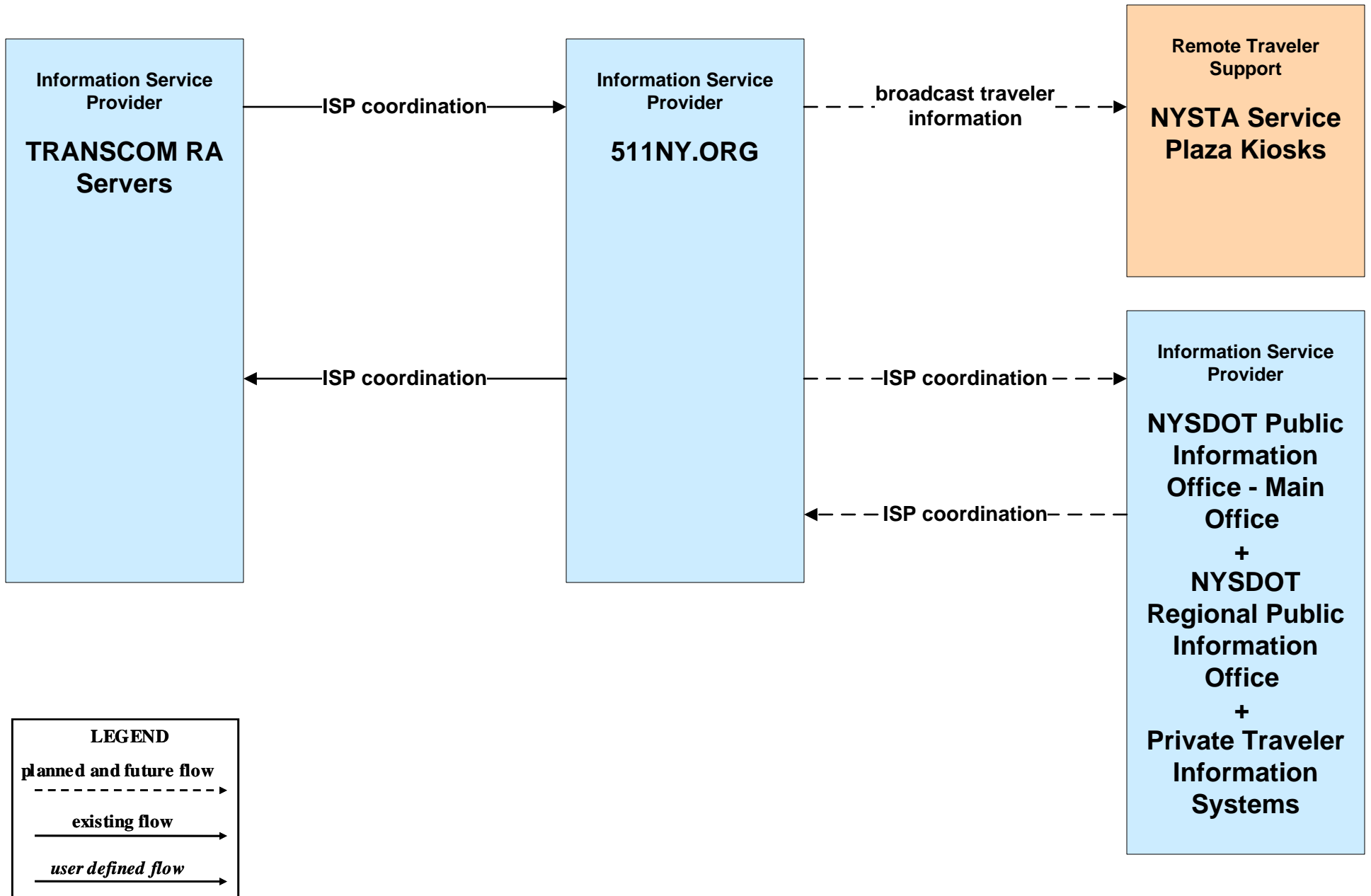
**APTS08 - Transit Traveler Information  
 NYSDOT TSIP / 511NY.ORG**



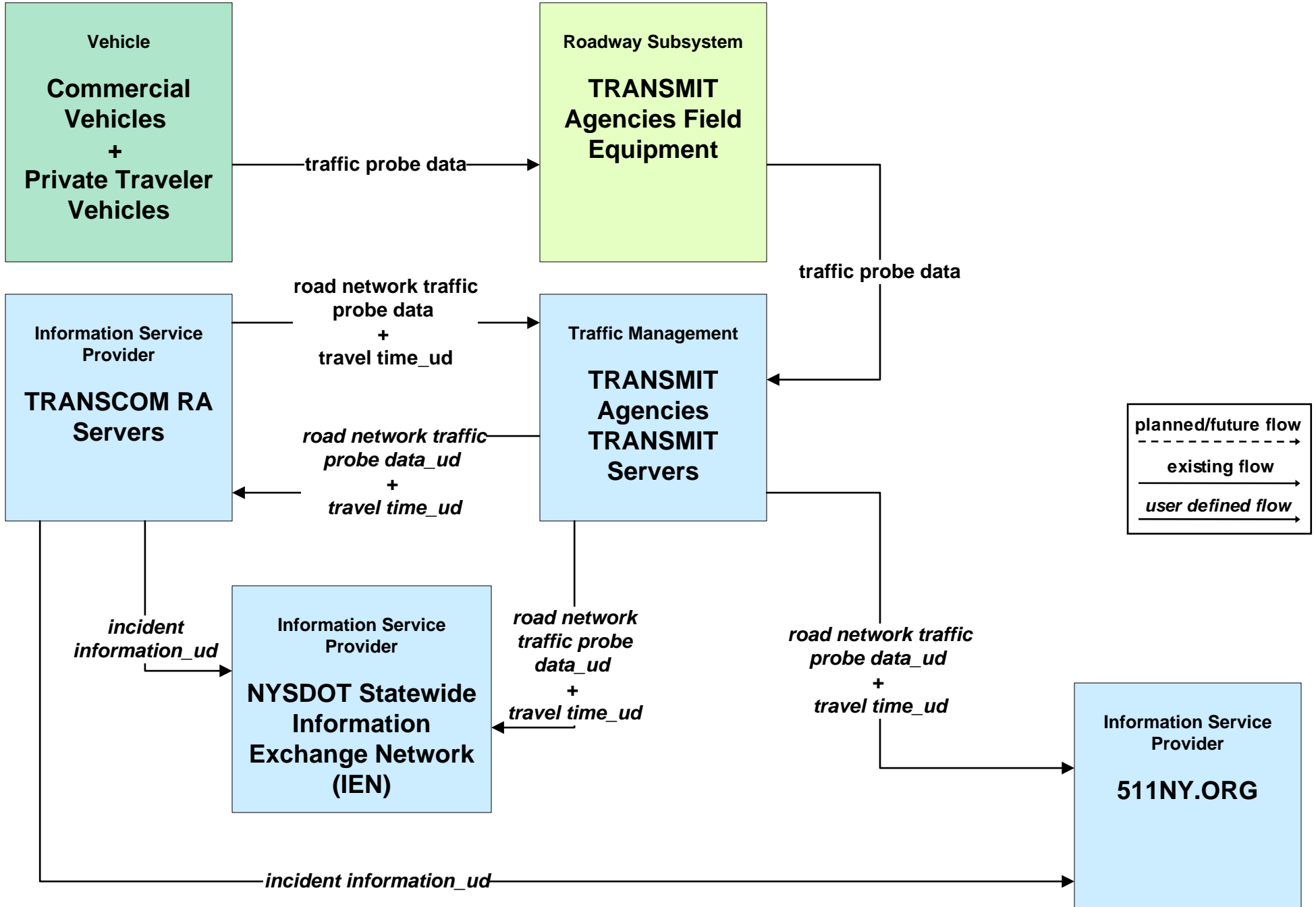
**ATIS01 - Broadcast Traveler Information**  
**511NY.ORG – Incidents (2 of 3)**



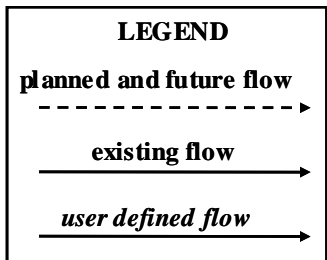
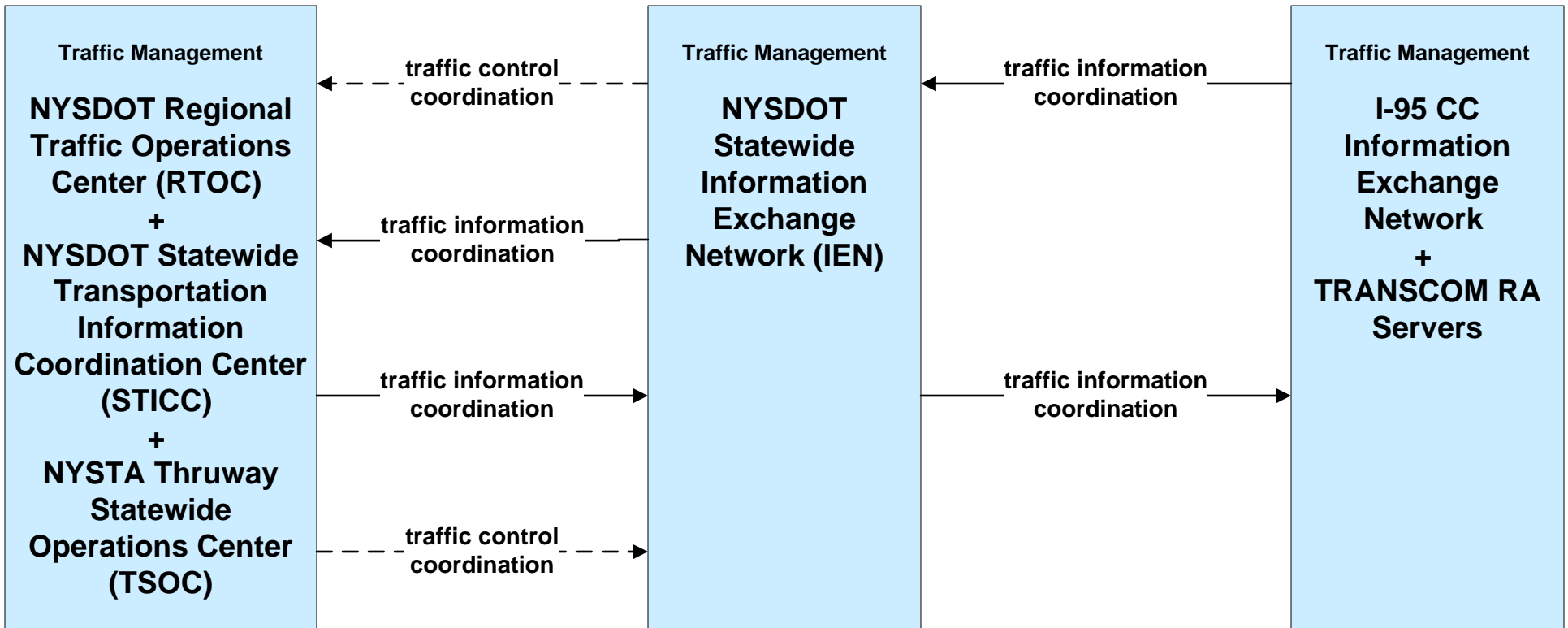
**ATIS01 - Broadcast Traveler Information  
NYSDOT 511.ORG (3 of 3)**



**ATMS02 - Probe Surveillance  
TRANSMIT / NYSDOT IEN**

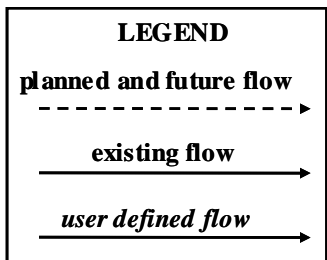
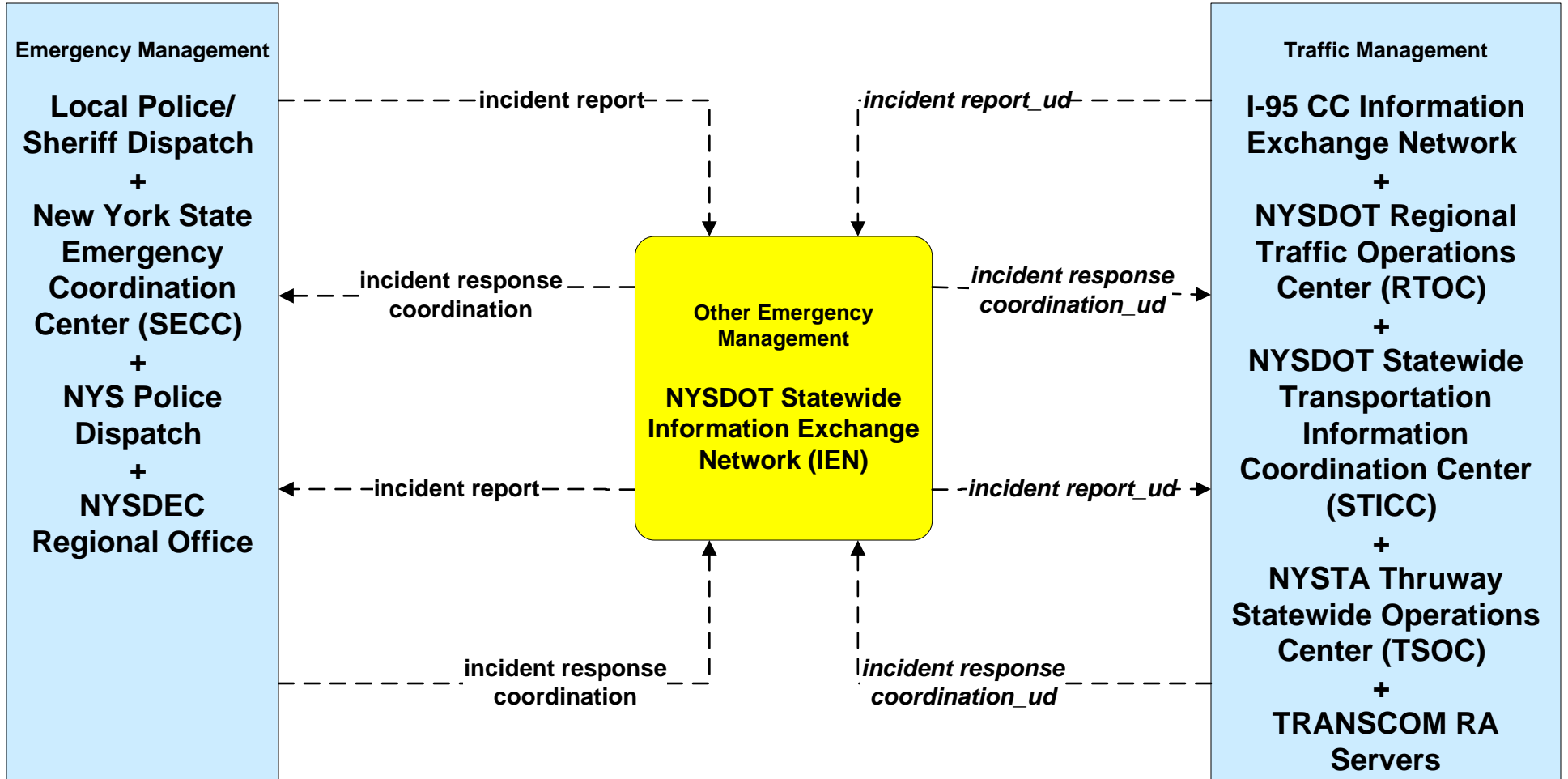


**ATMS07 - Regional Traffic Management  
 NYSDOT Statewide Information Exchange Network (IEN)**



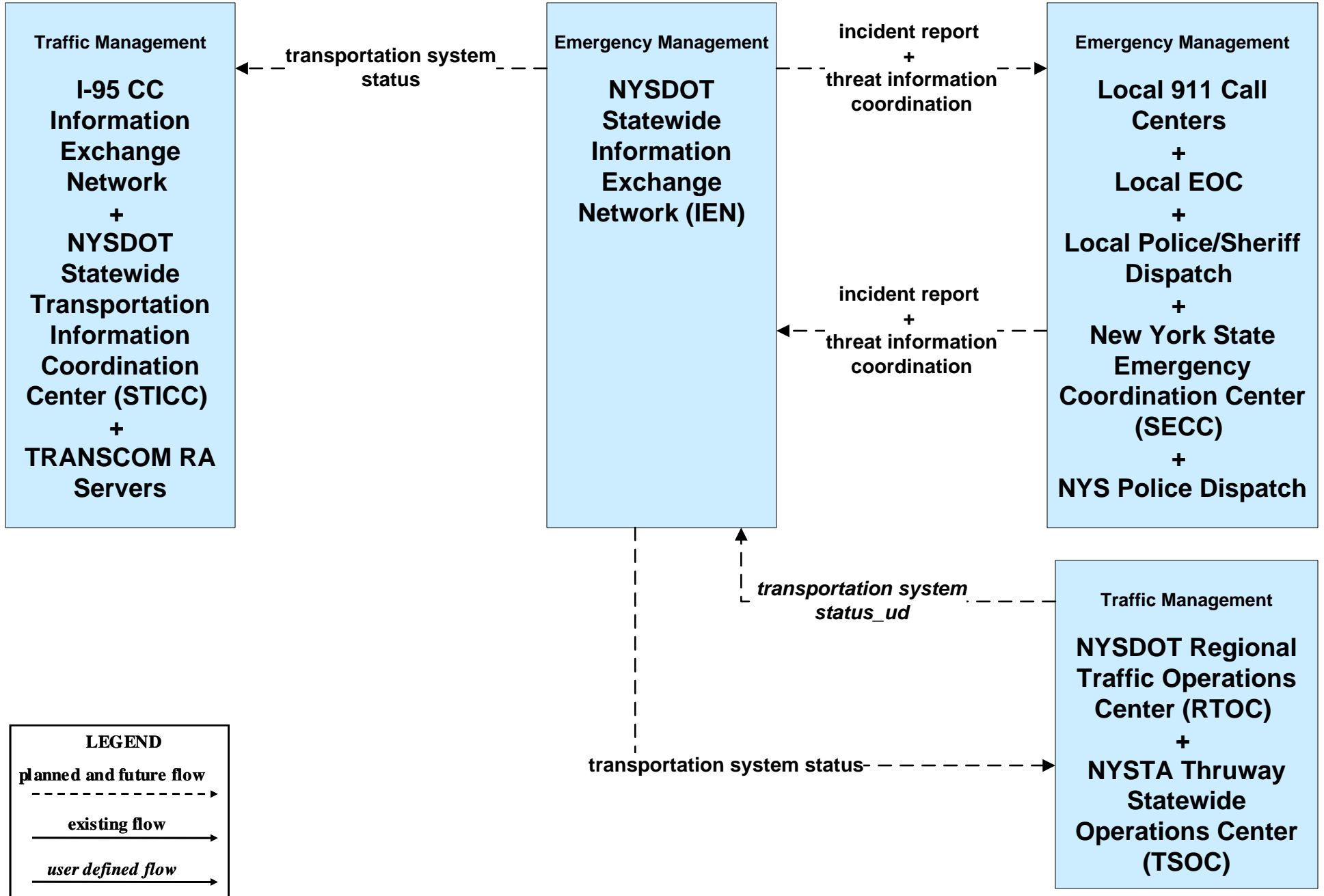
*Note: 511NY.ORG is a part of the IEN.*

**EM01 - Emergency Call-Taking and Dispatch  
 NYSDOT Statewide Transportation Information Control Center (STICC) and  
 Statewide Information Exchange Network (IEN)**

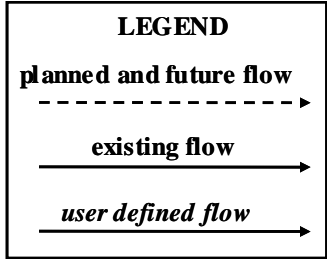
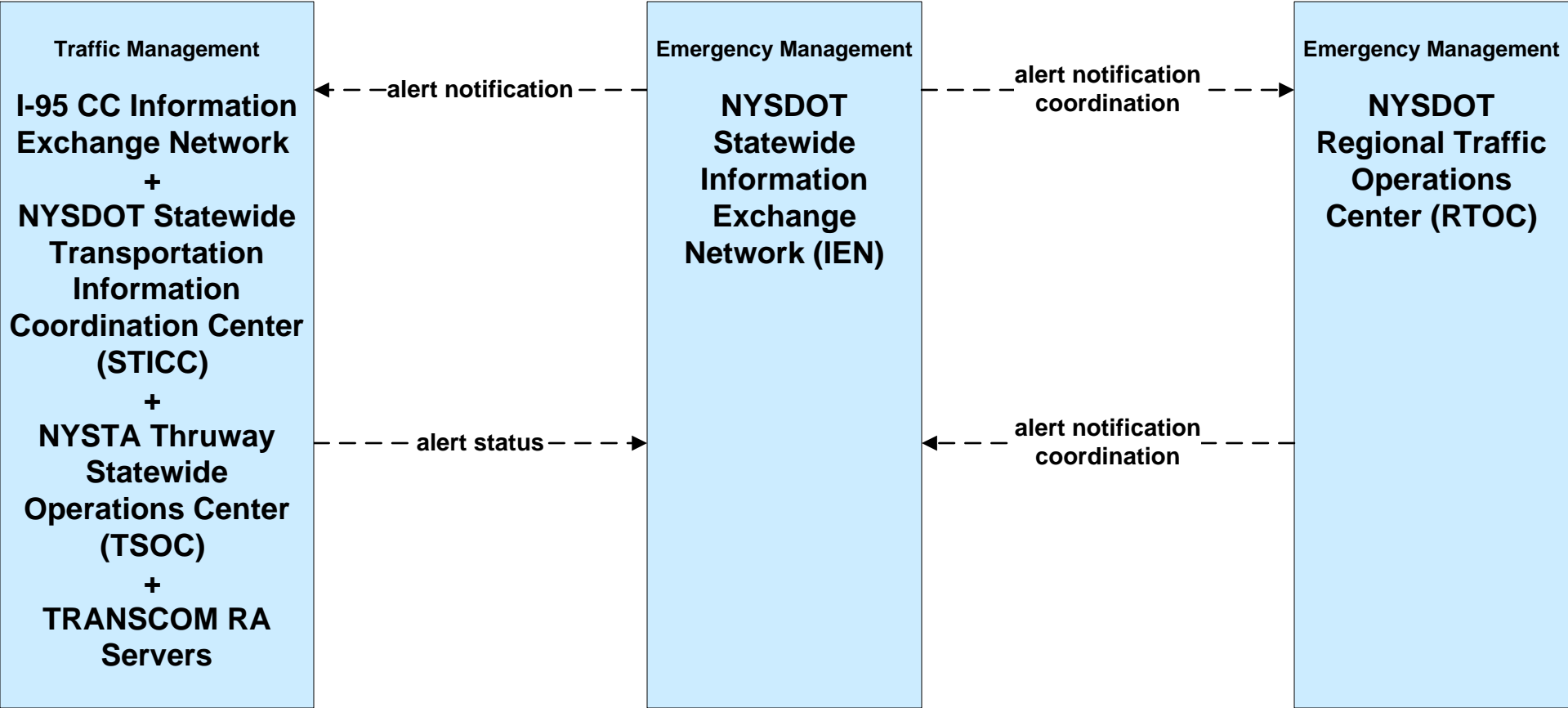




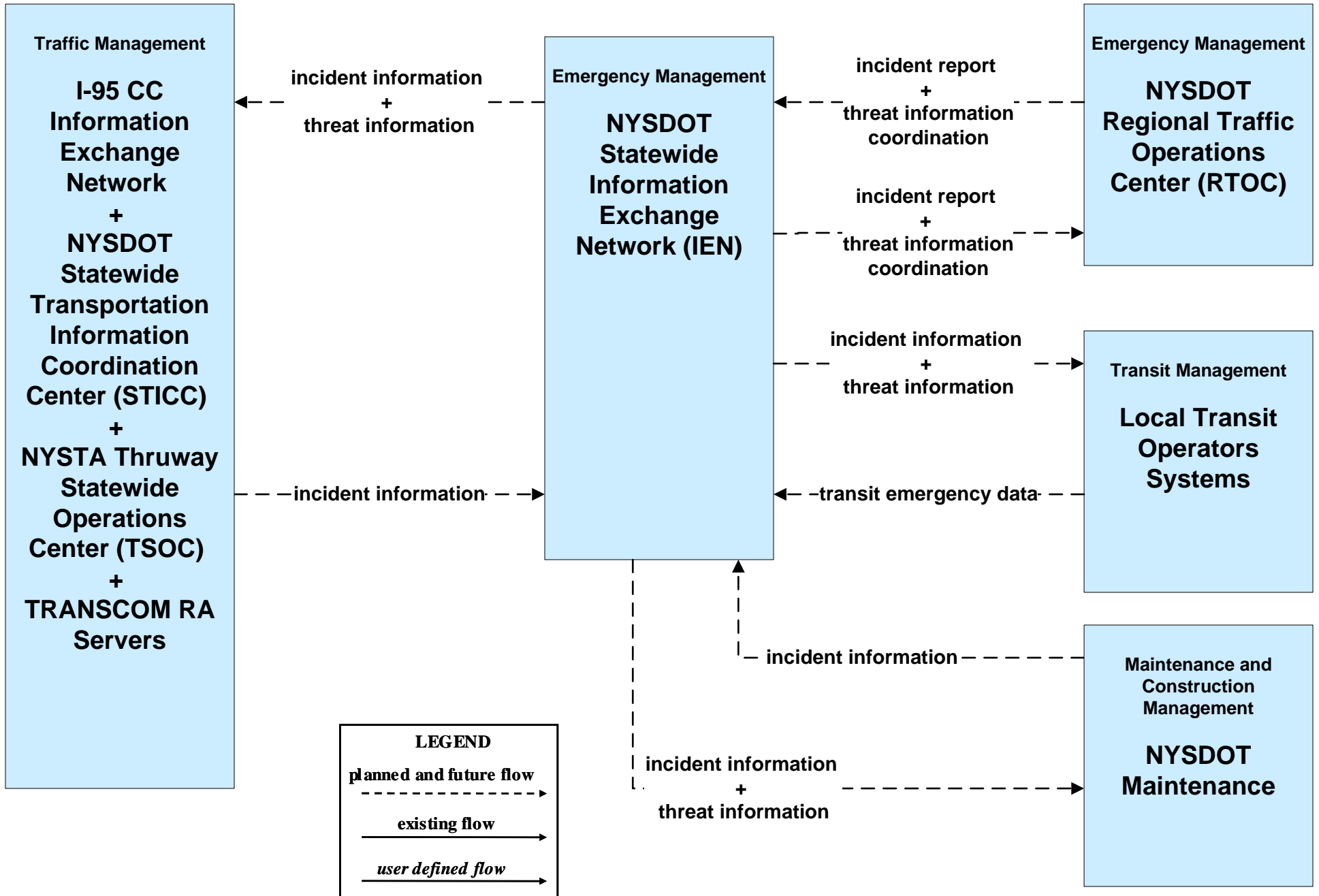
**EM05 - Transportation Infrastructure Protection  
 NYSDOT RTOCs / IEN (2 of 2)**



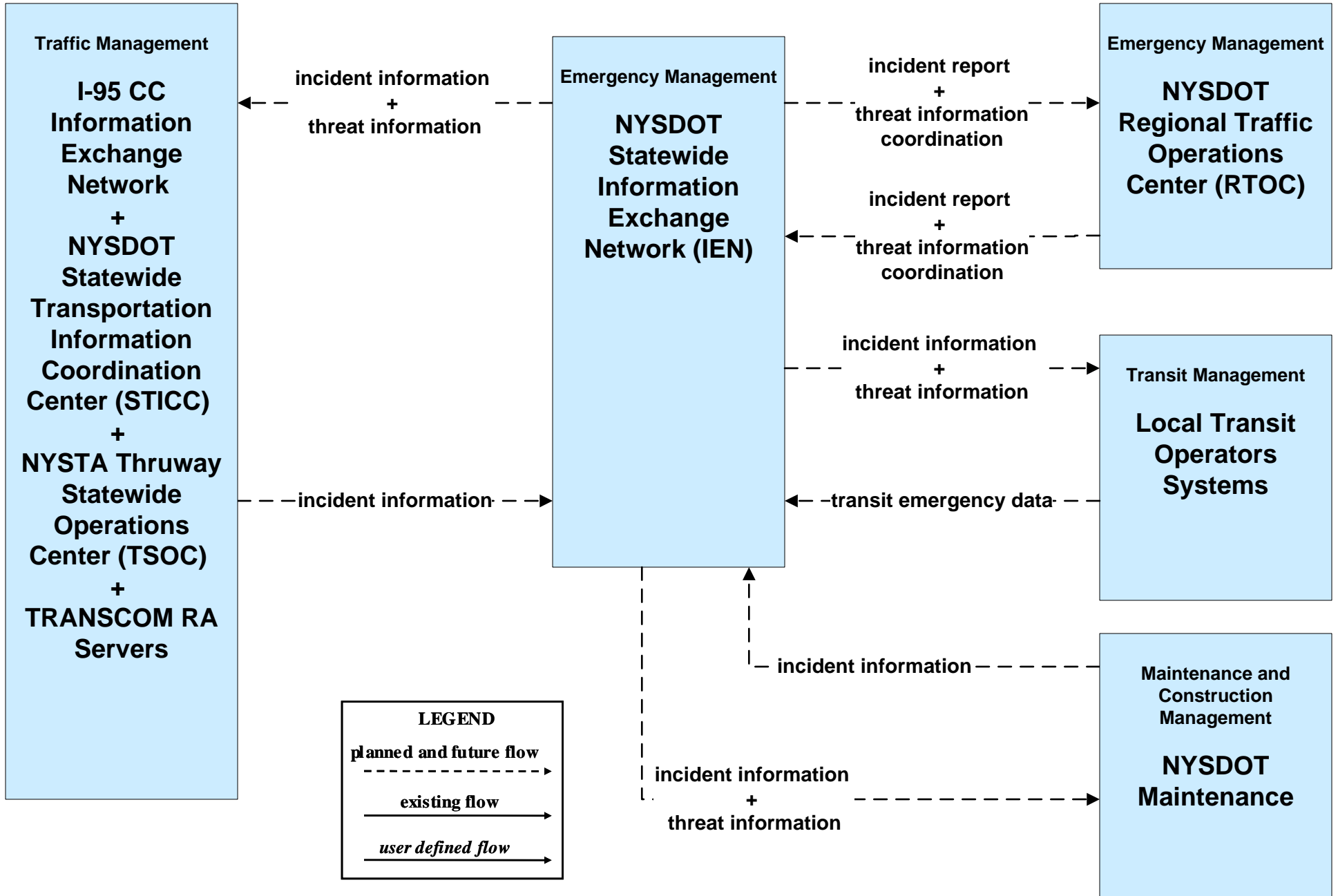
**EM06 - Wide Area Alert  
NYSDOT IEN**



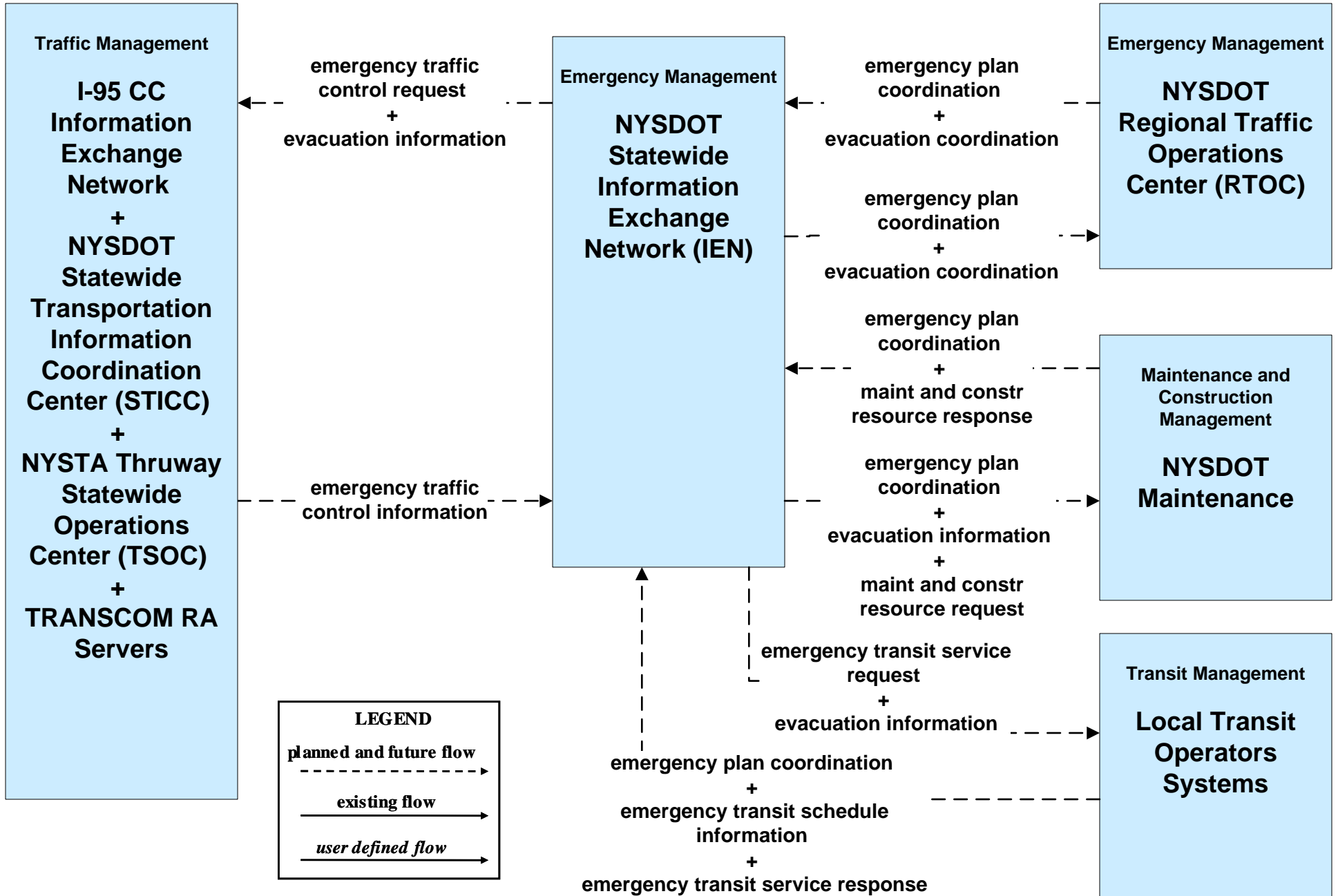
**EM07 – Early Warning System  
NYSDOT IEN**



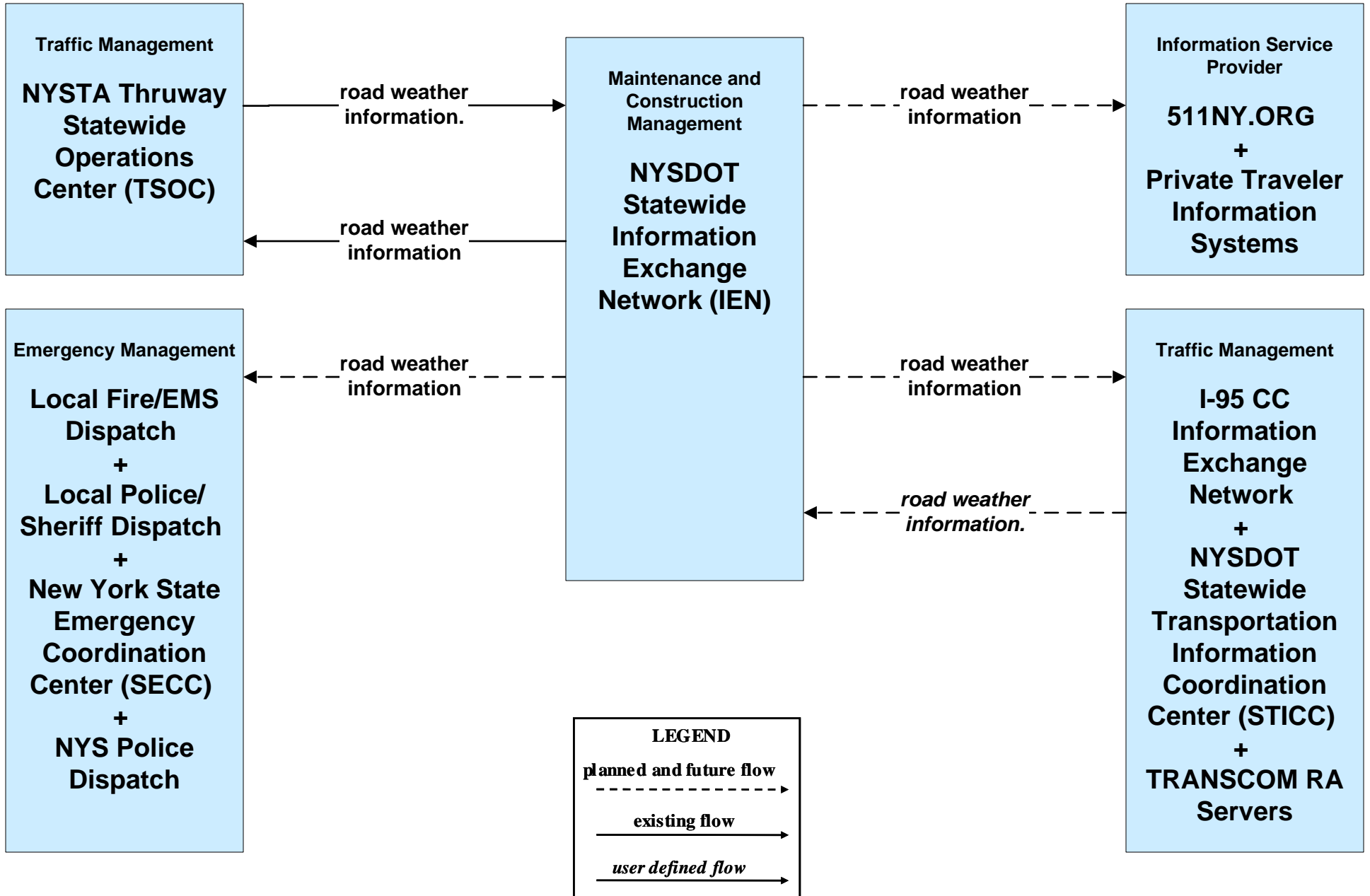
**EM08 – Disaster Recovery and Response  
 NYSDOT IEN**



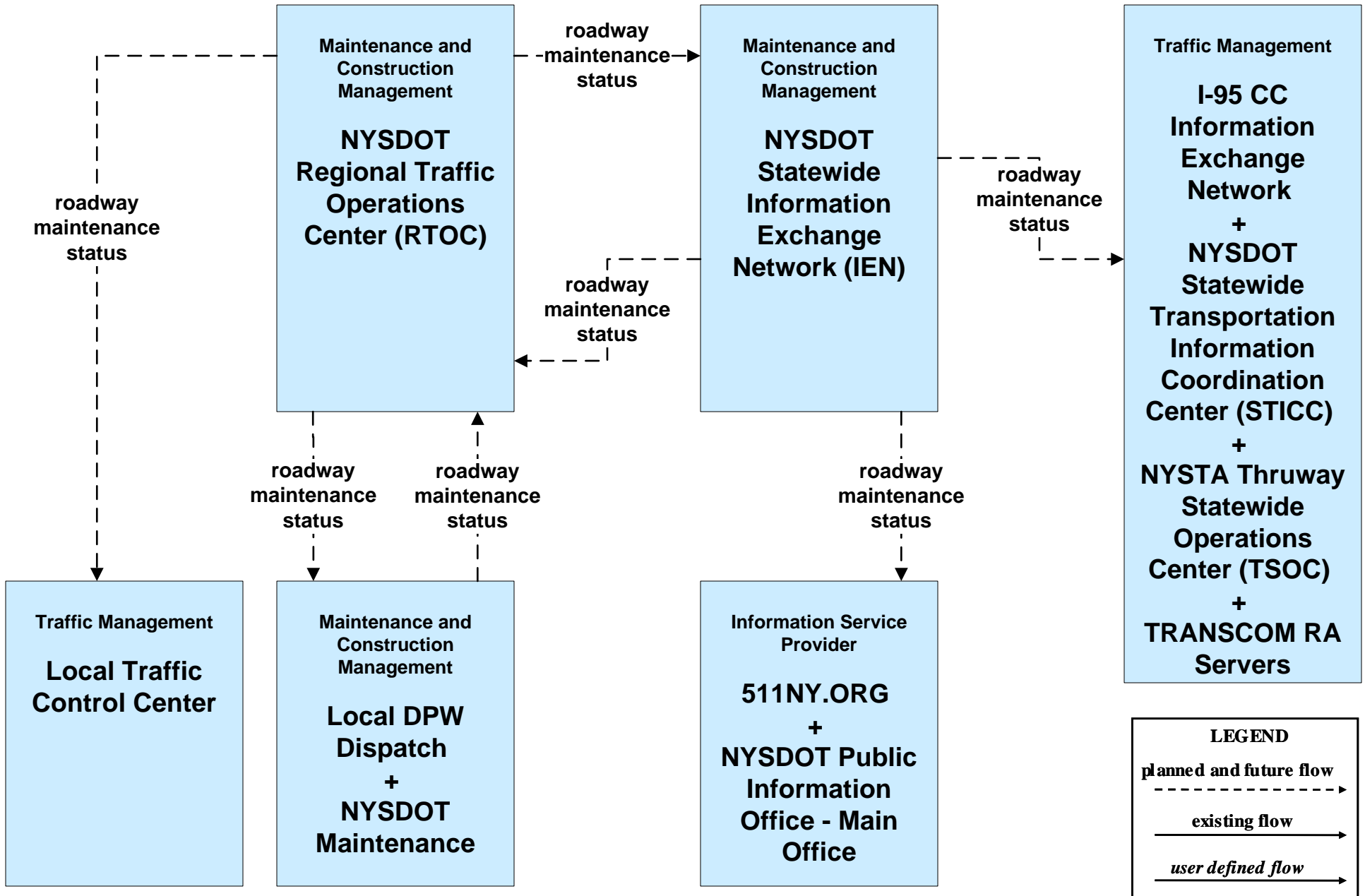
**EM09 – Evacuation and Reentry Management  
NYSDOT IEN**



**MC04 – Weather Information Processing and Distribution  
 NYSDOT (2 of 2)**



**MC06 – Winter Maintenance  
 NYSDOT (2 of 3)**



**MC10 – Maintenance and Construction Activity Coordination  
NYSDOT**

