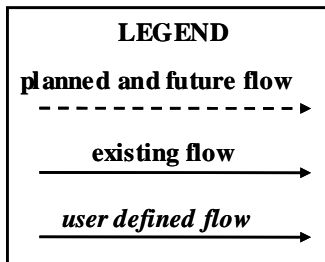
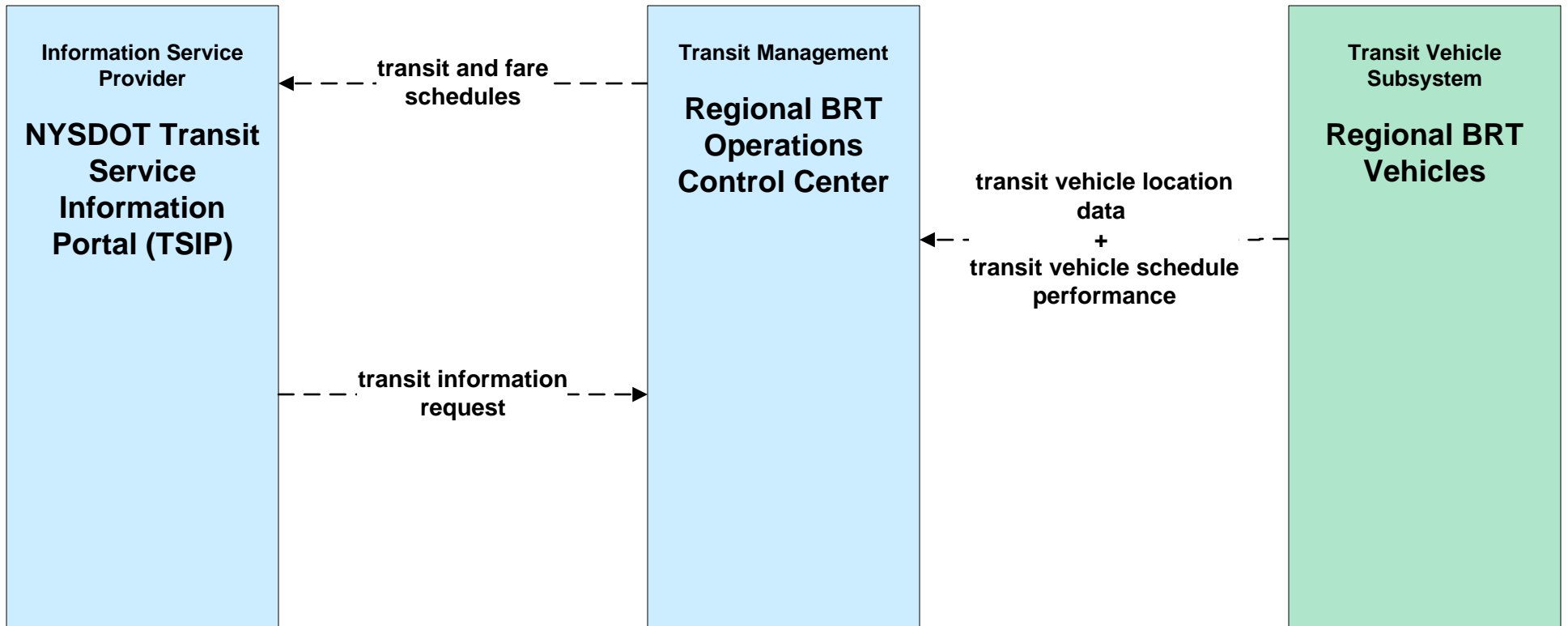


New York Statewide Services ITS Architecture

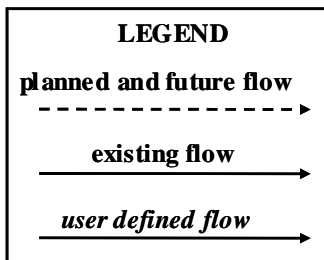
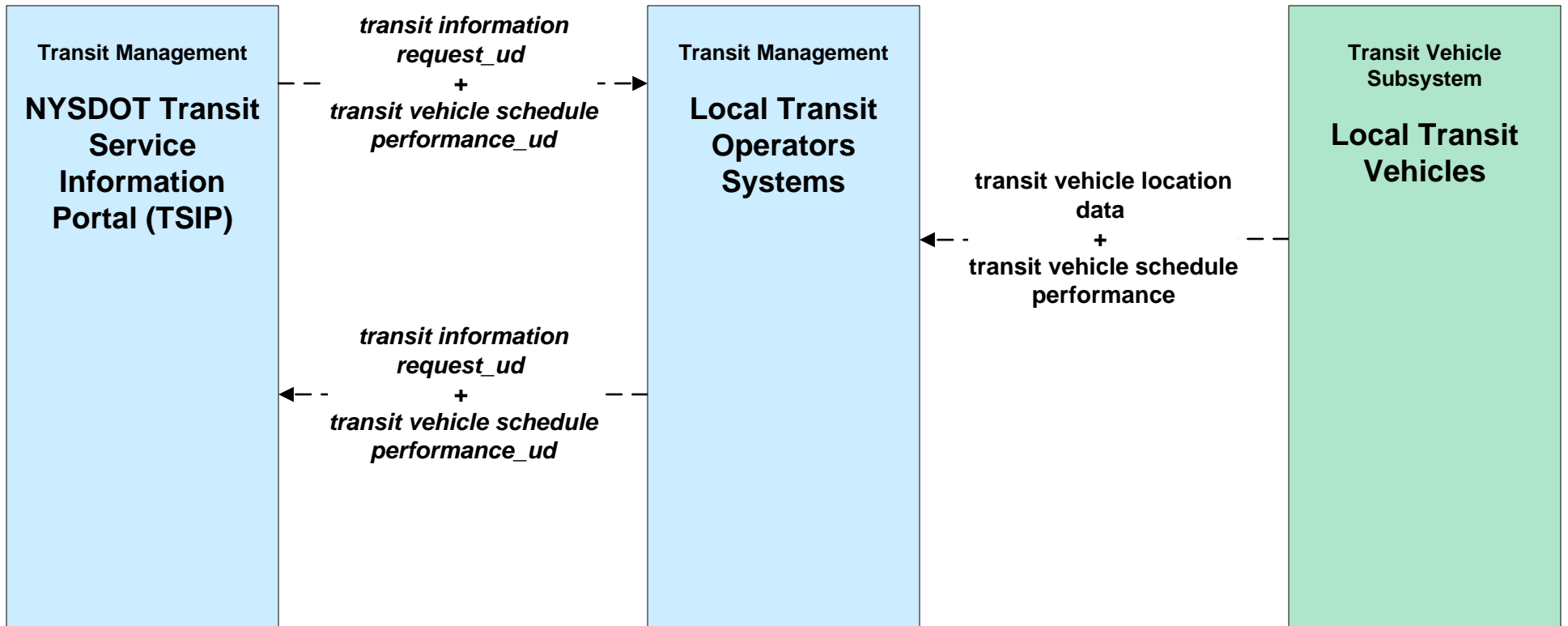
Customized Market Package Diagrams

Advanced Public Transportation Systems (APTS)

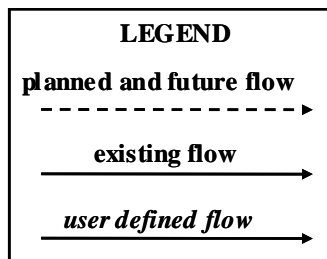
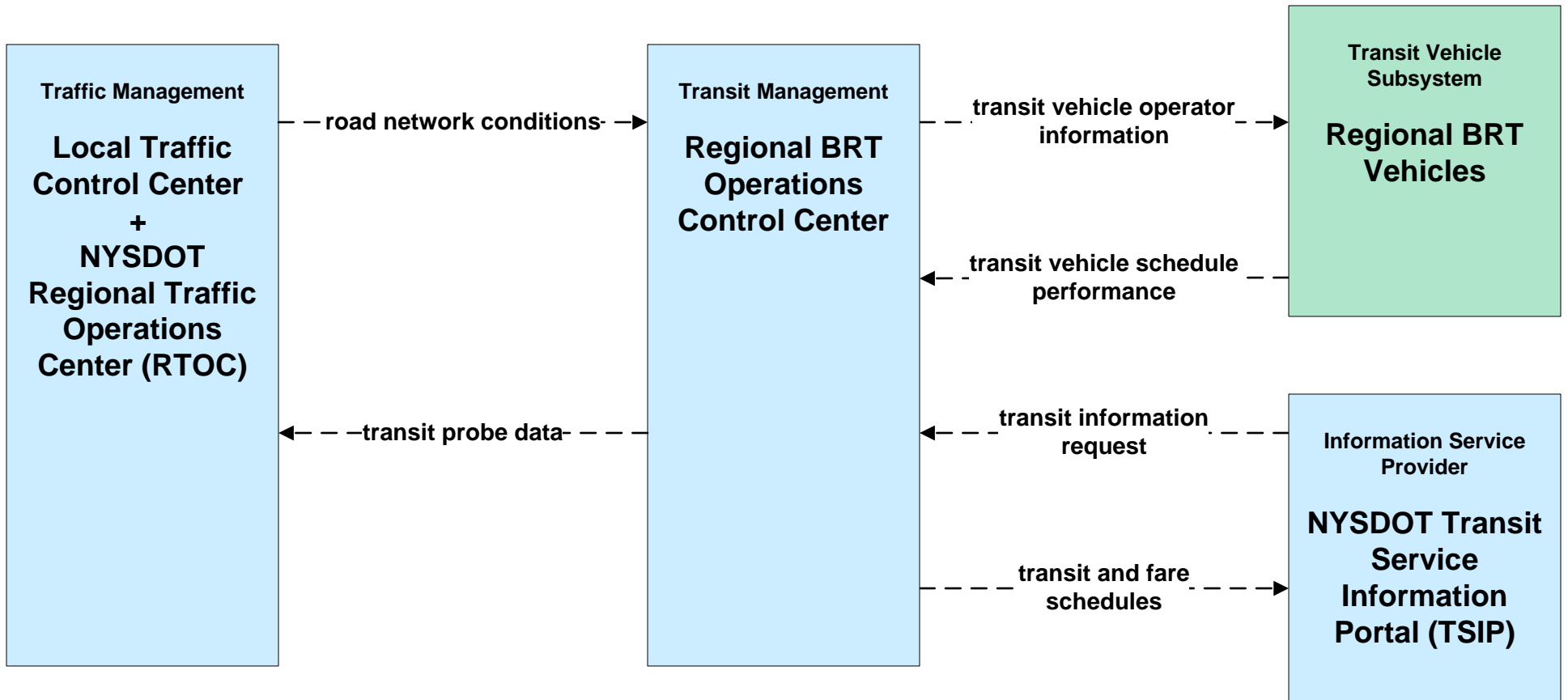
APTS01 - Transit Vehicle Tracking Regional BRT



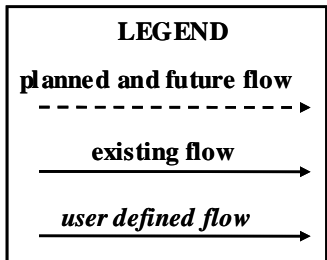
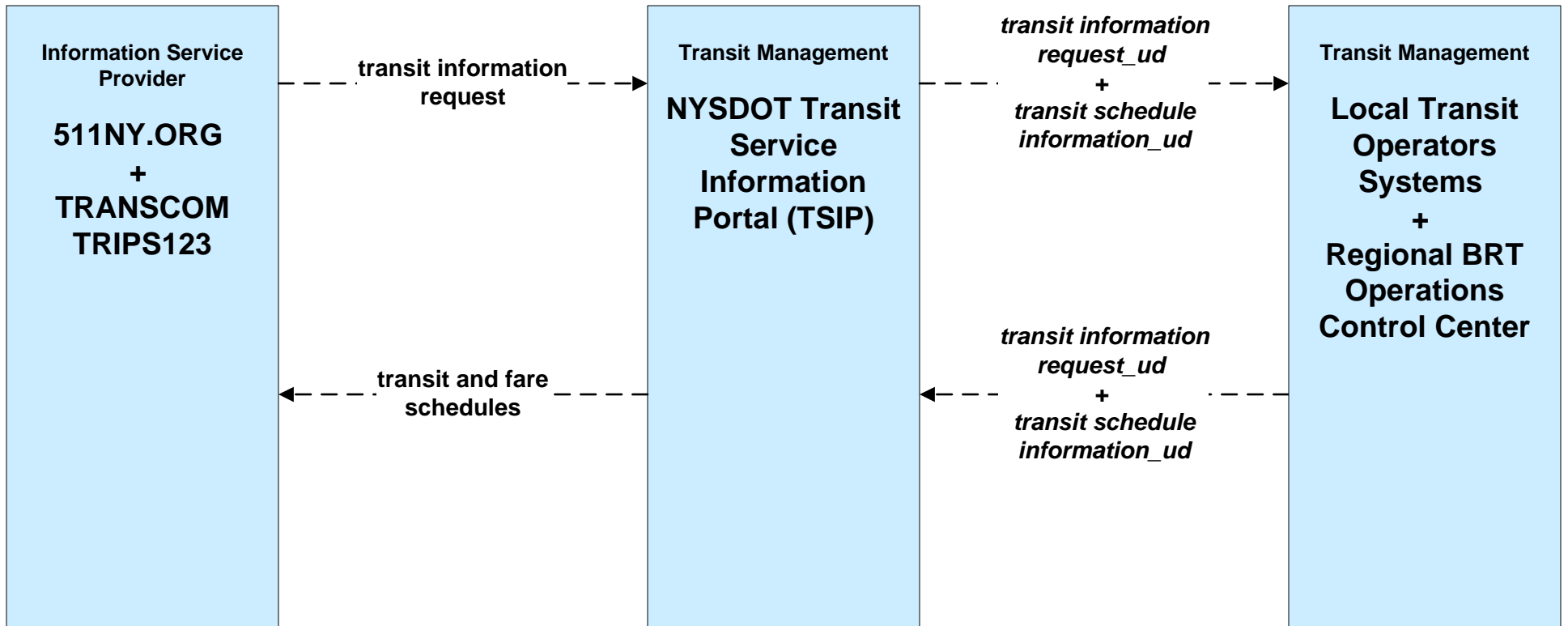
APTS01 - Transit Vehicle Tracking NYSDOT TSIP



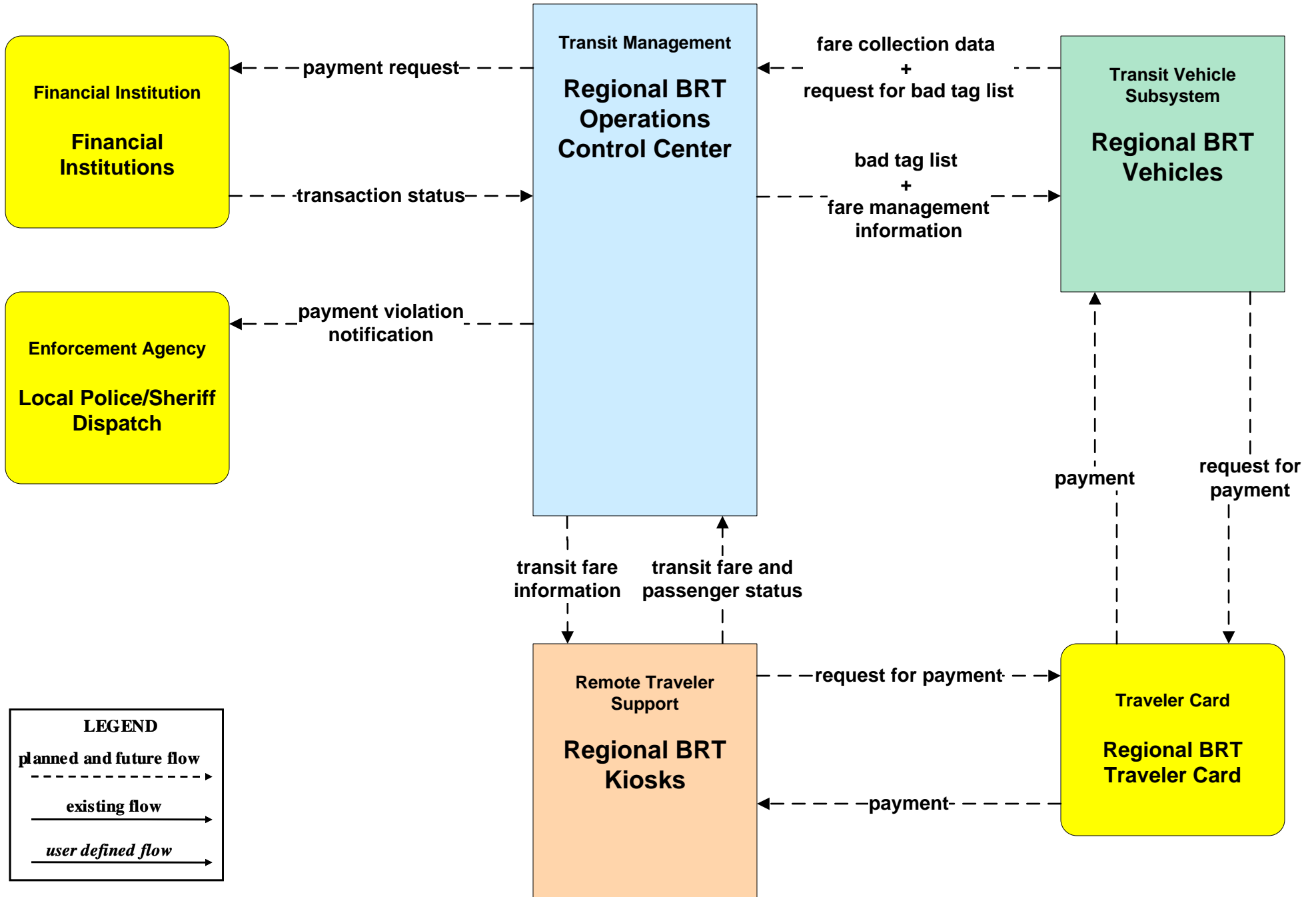
APTS02 - Transit Fixed-Route Operations Regional BRT



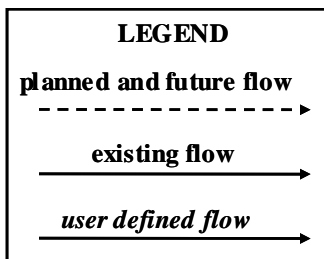
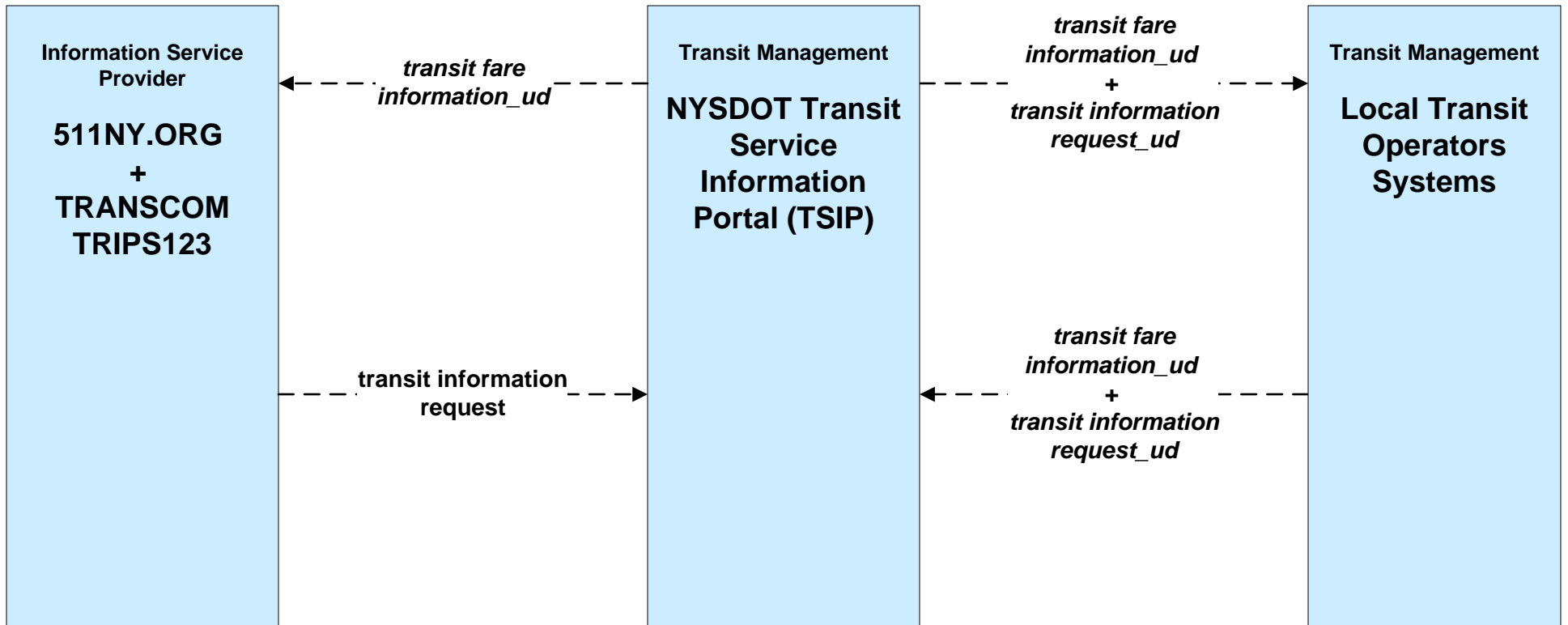
**APTS02 - Transit Fixed-Route Operations
NYSDOT TSIP**



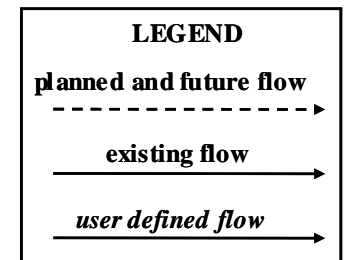
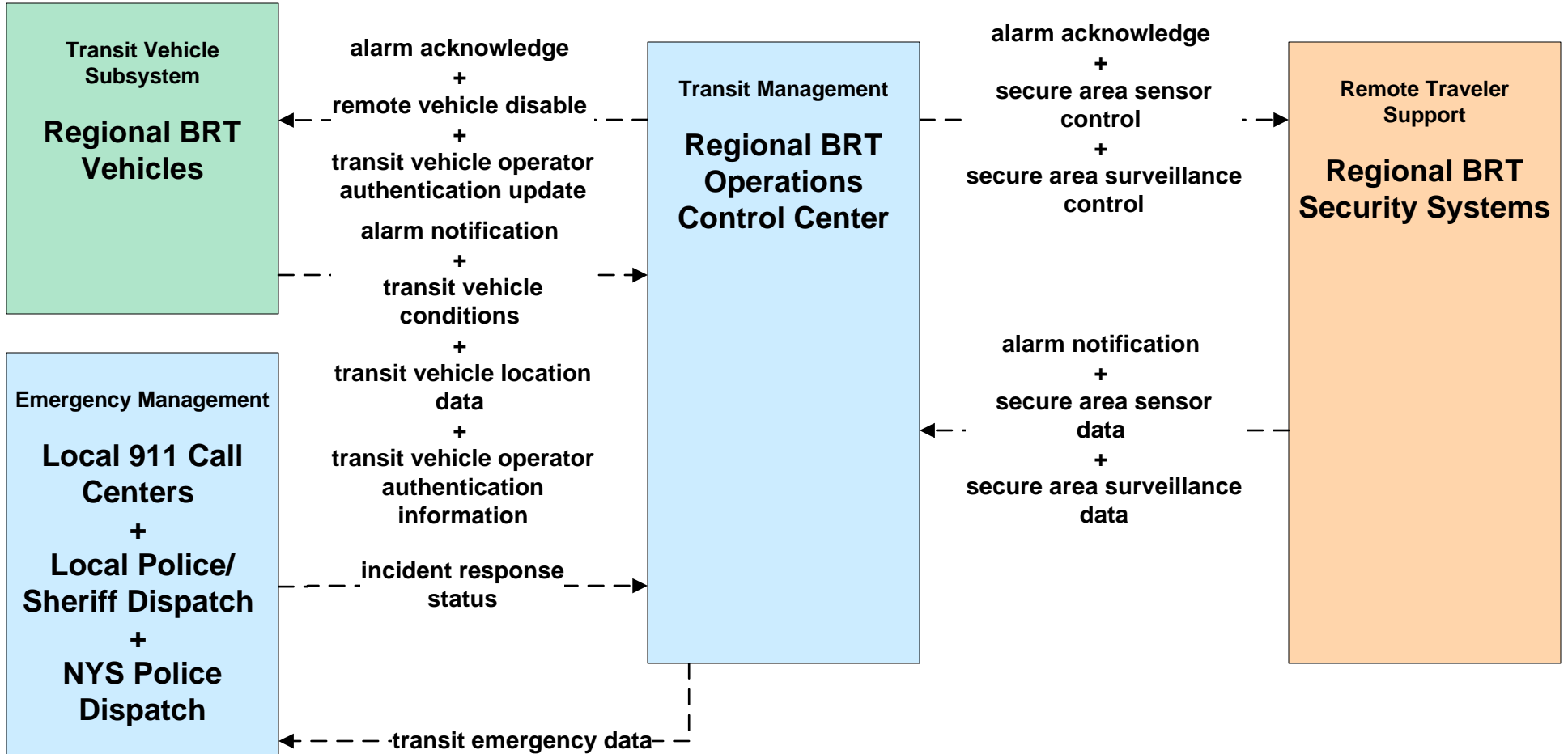
APTS04 - Transit Passenger and Fare Management Regional BRT



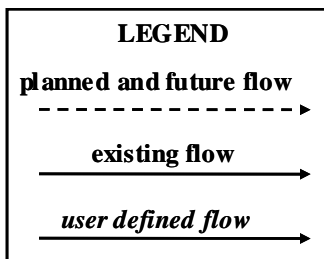
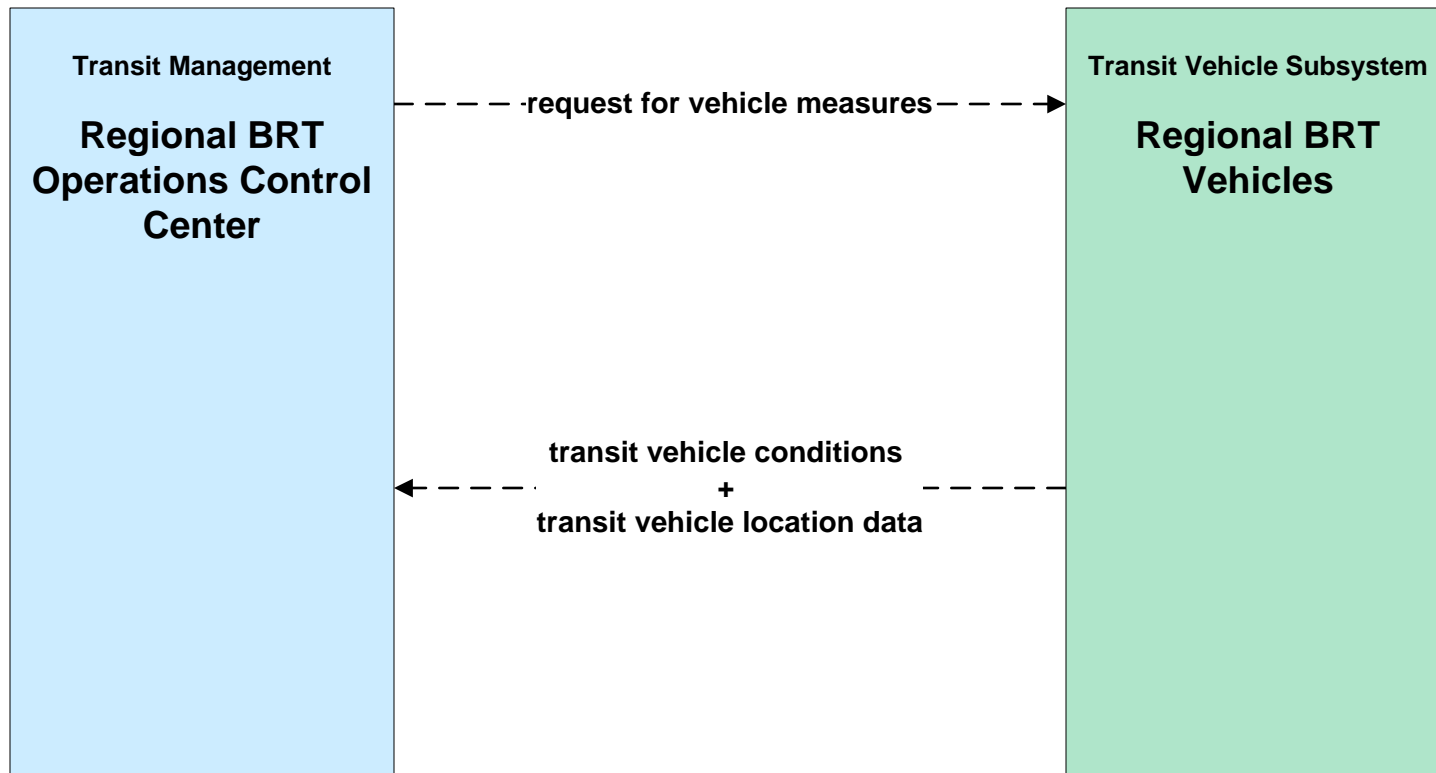
**APTS04 - Transit Fare Collection Management
NYSDOT TSIP**



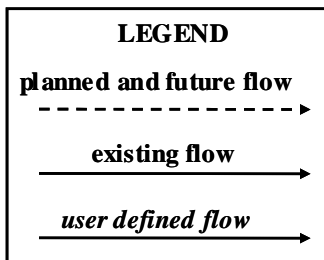
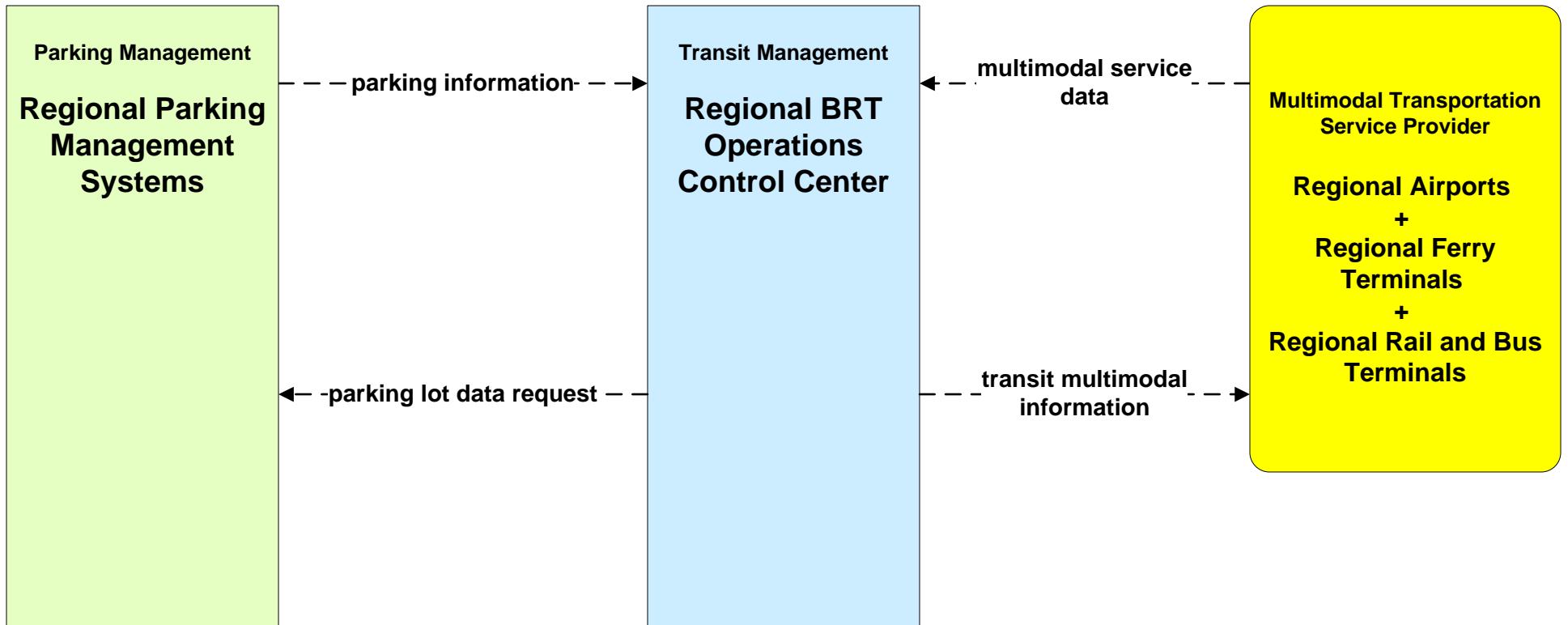
APTS05 - Transit Security Regional BRT



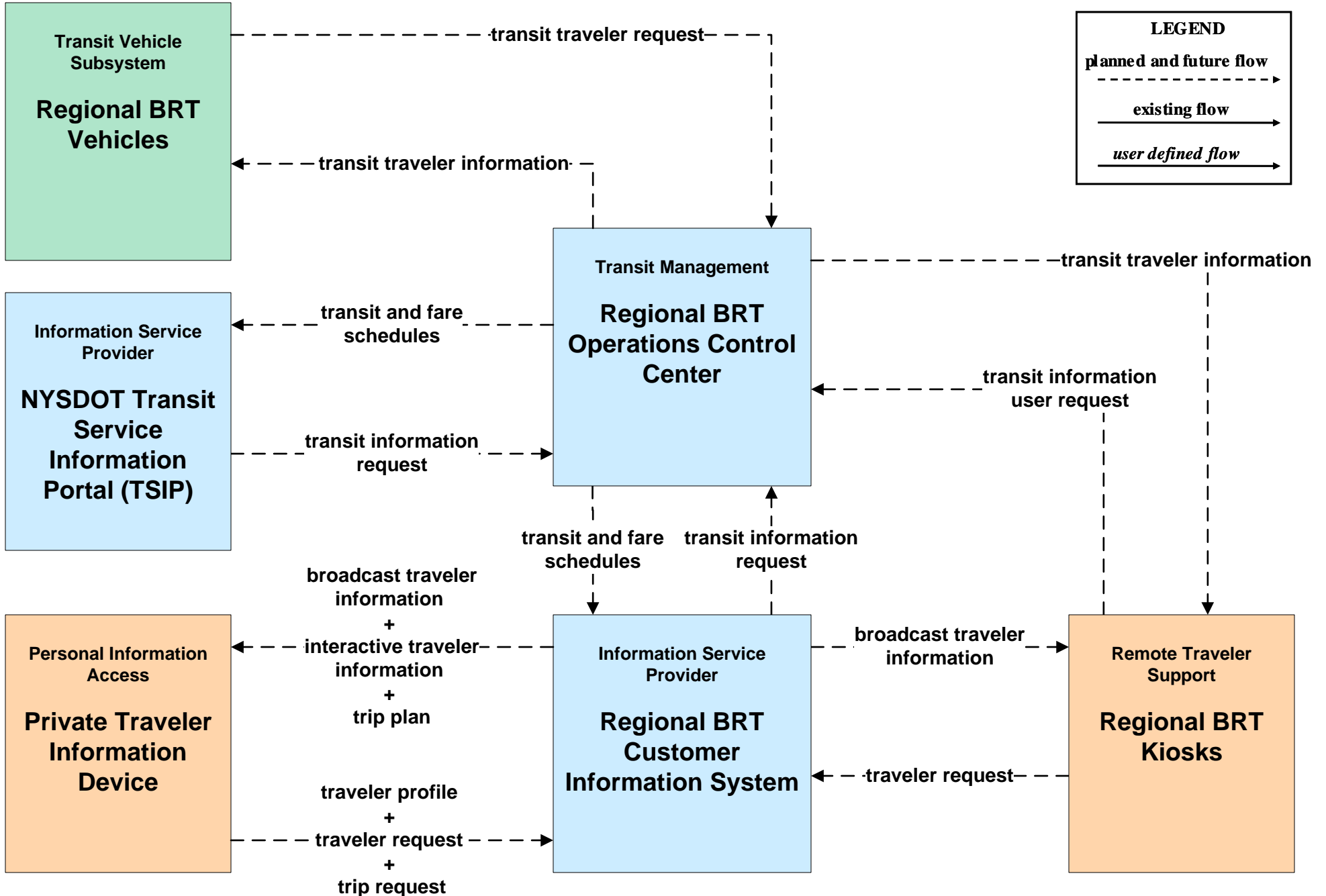
**APTS06 - Transit Maintenance
Regional BRT**



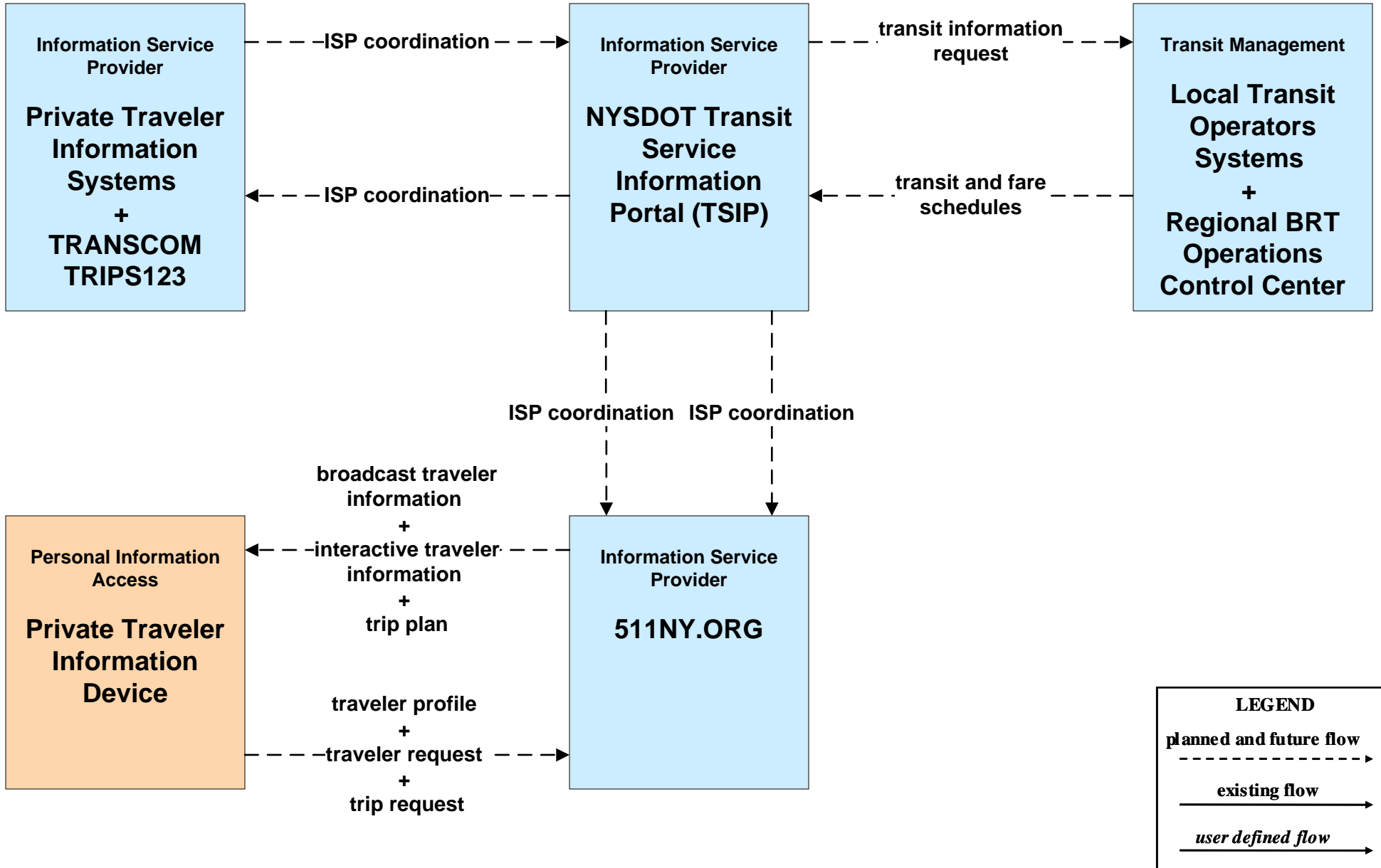
APTS07 - Multi-modal Coordination Regional BRT



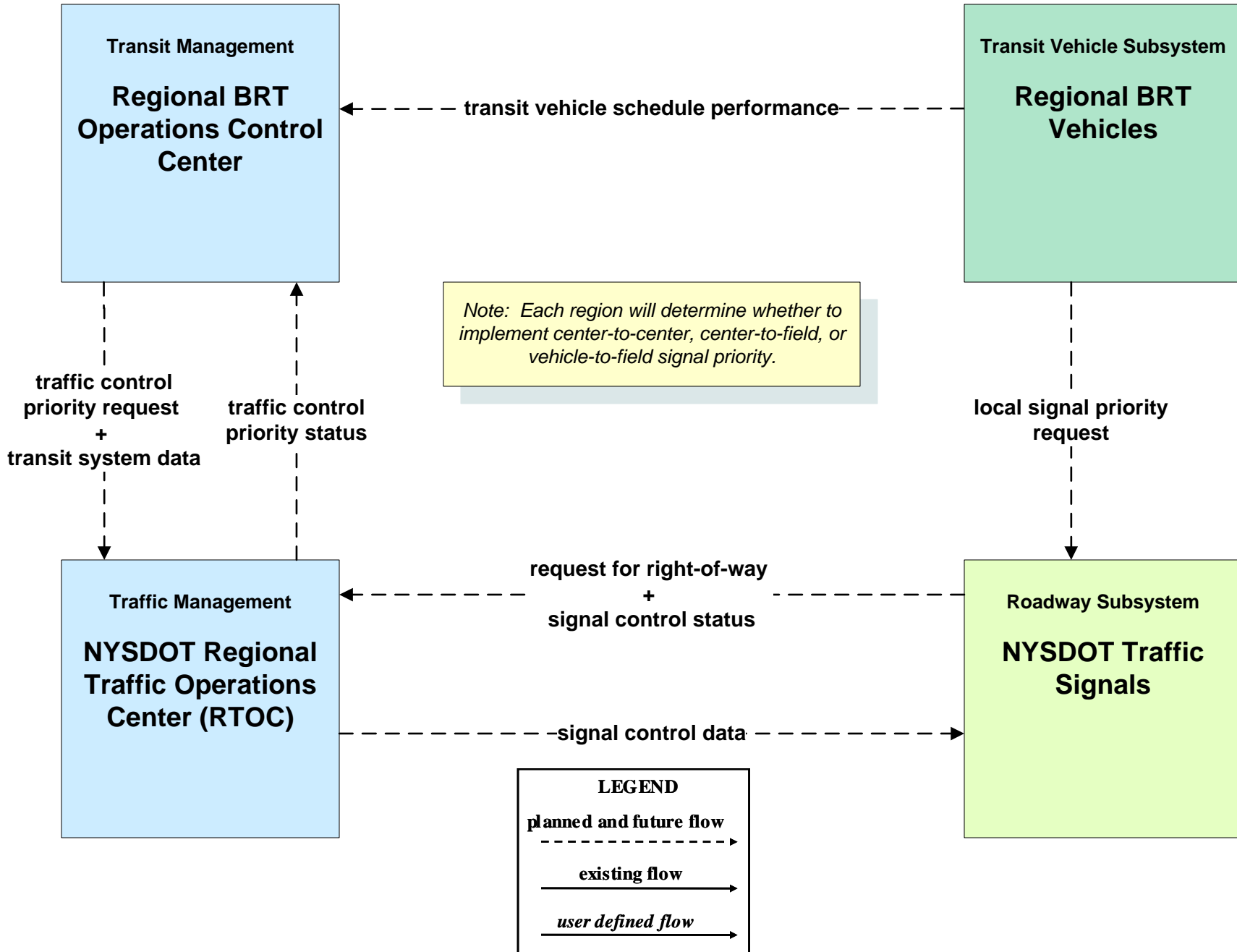
APTS08 - Transit Traveler Information Regional BRT



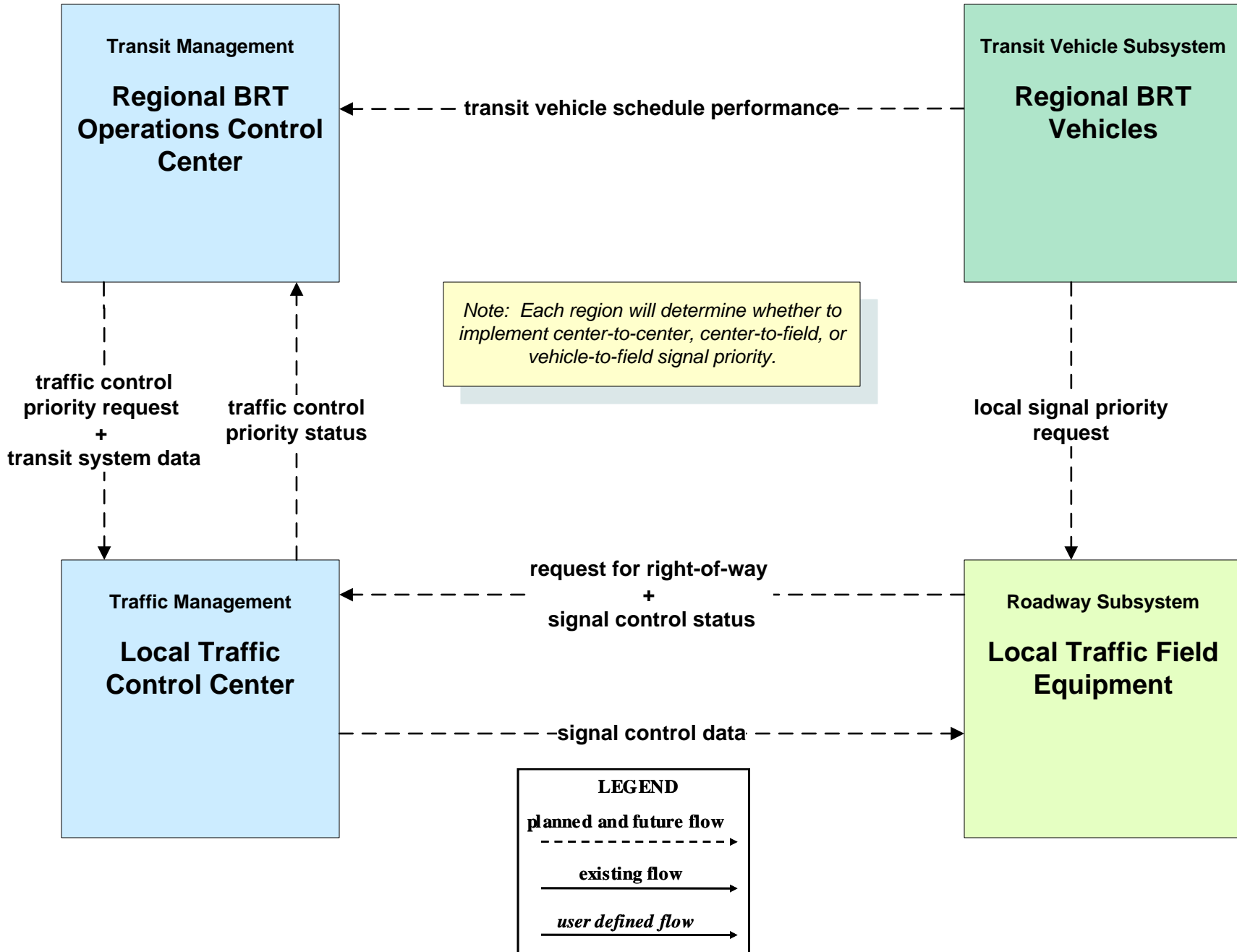
**APTS08 - Transit Traveler Information
 NYSDOT TSIP / 511NY.ORG**



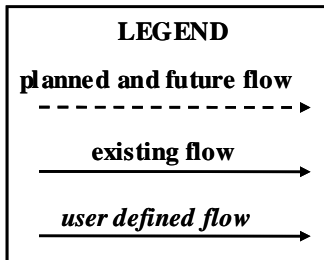
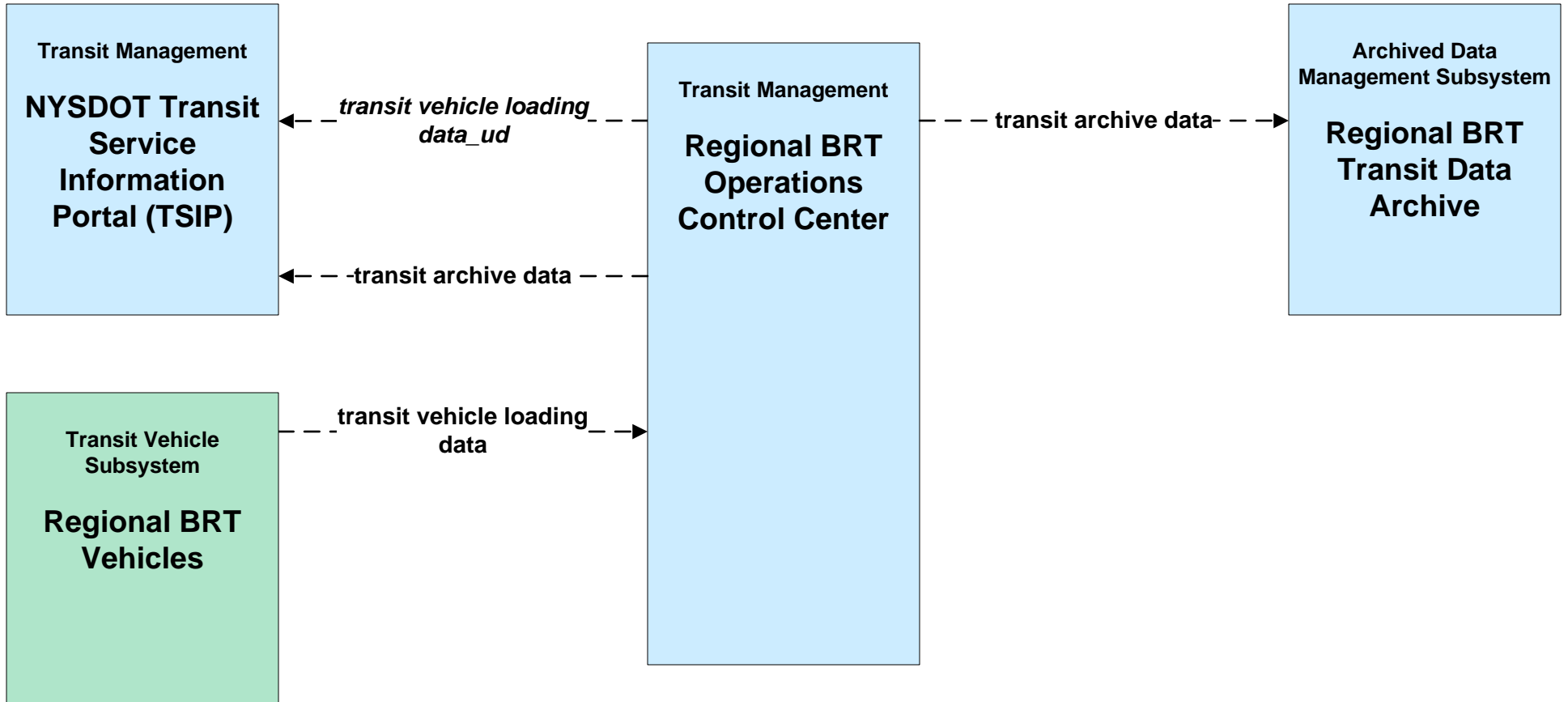
APTS09 – Transit Signal Priority Regional BRT



APTS09 – Transit Signal Priority Regional BRT



**APTS10 - Transit Passenger Counting
NYSDOT TSIP / Regional BRT**



**APTS10 - Transit Passenger Counting
NYSDOT TSIP / Local Transit Operators**

