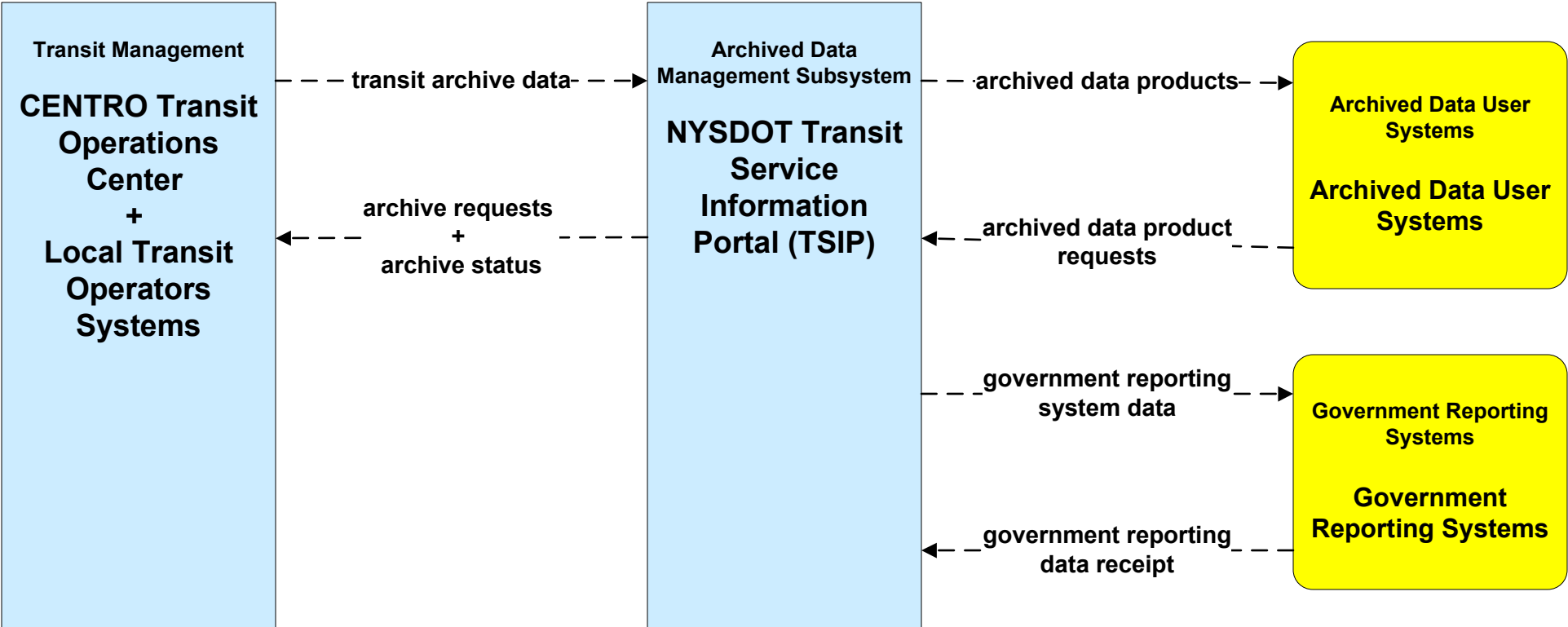
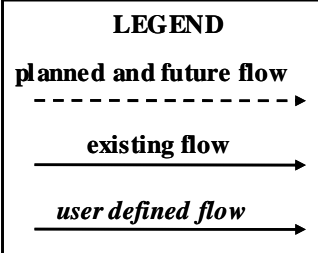


**AD2 - ITS Data Warehouse
 NYSDOT Transit Data Archive**

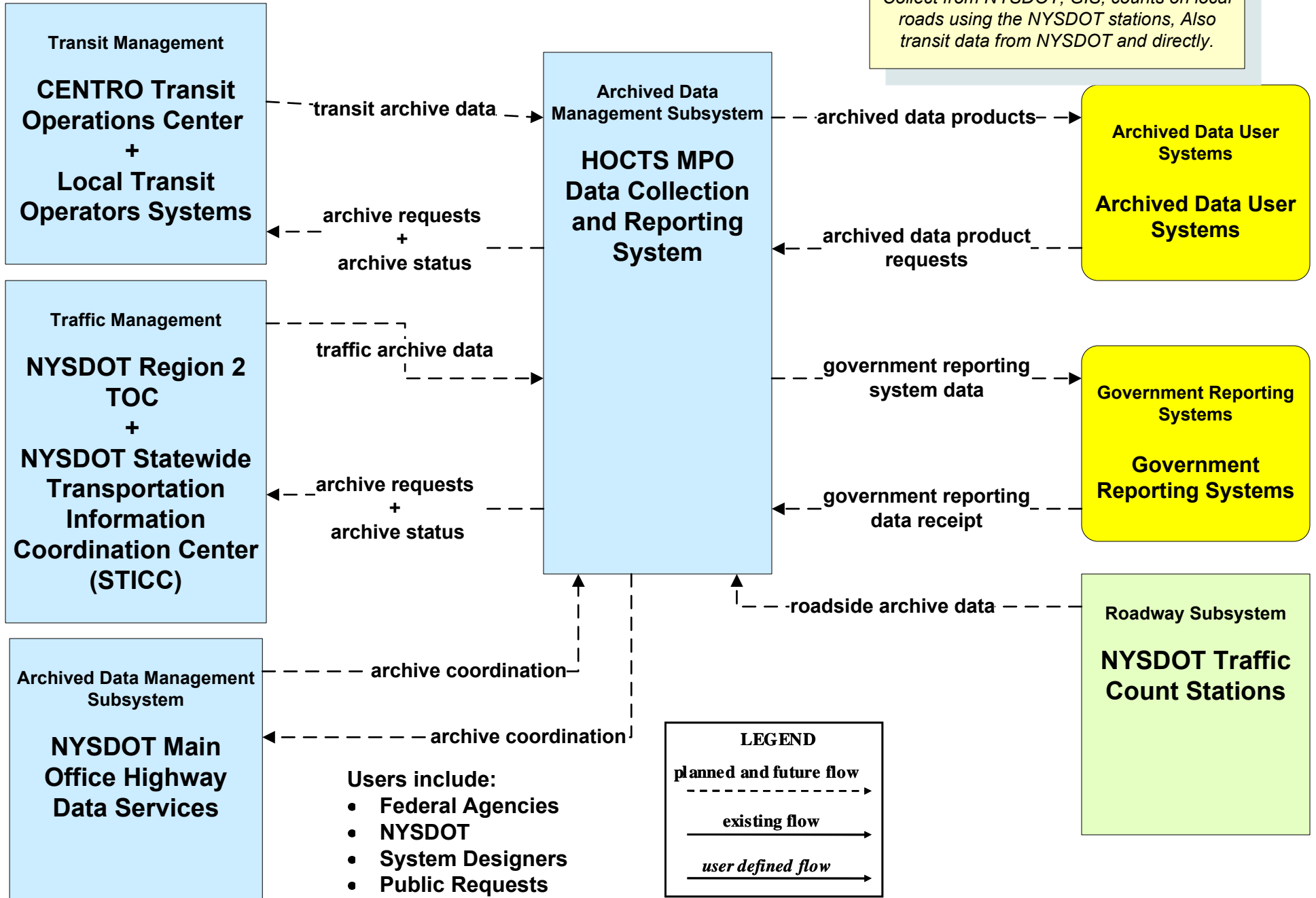


- Users include:**
- Federal Agencies
 - NYSDOT
 - System Designers
 - Public Requests

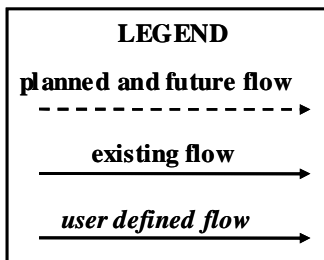
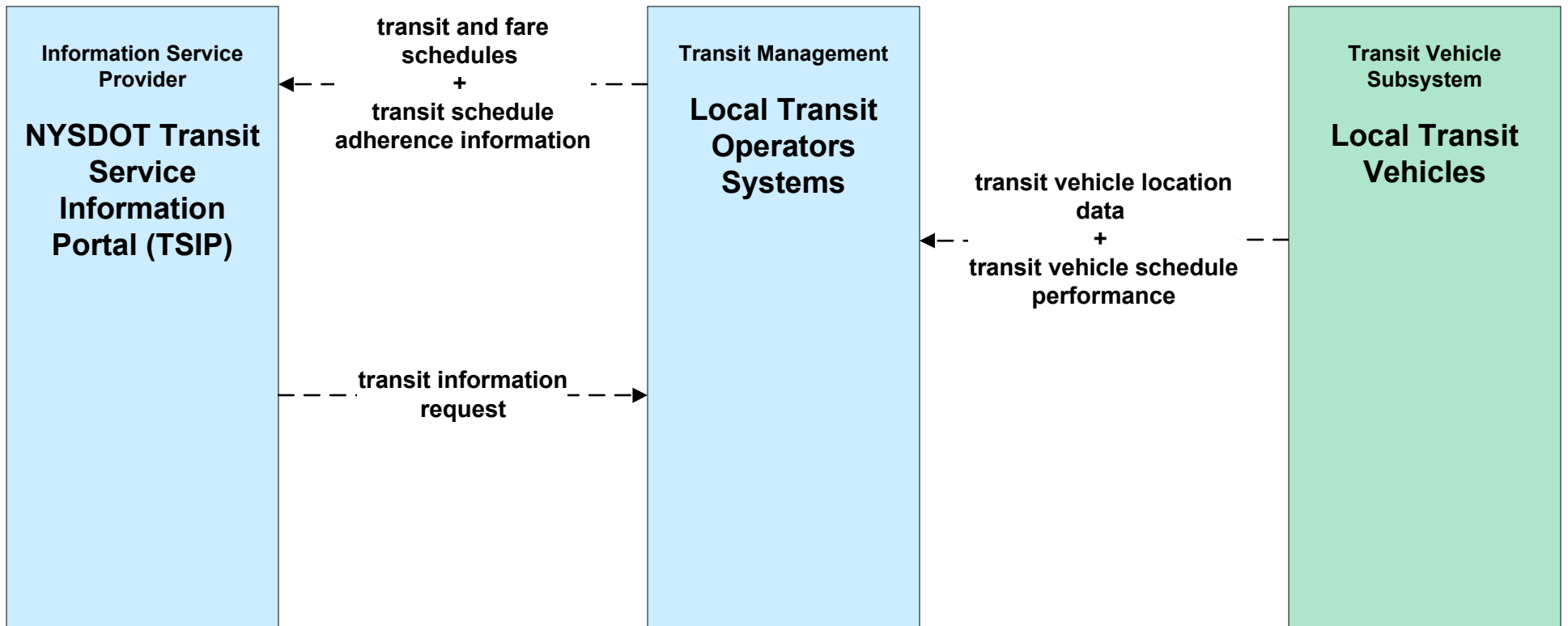


AD2 - ITS Data Warehouse MPO

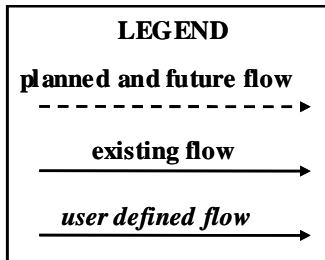
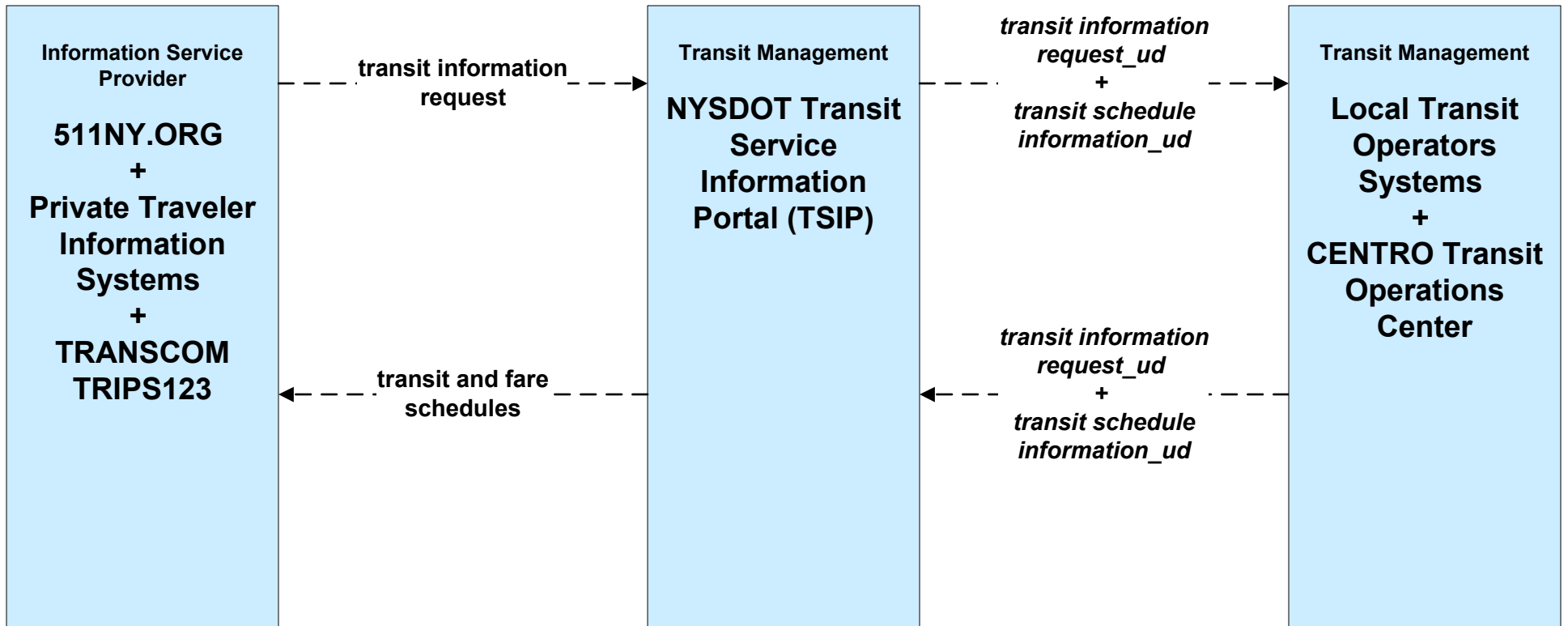
Collect from NYSDOT, GIS, counts on local roads using the NYSDOT stations, Also transit data from NYSDOT and directly.



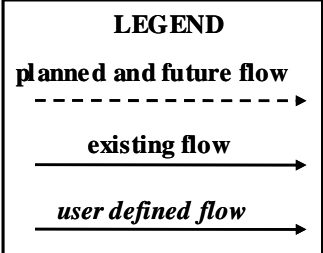
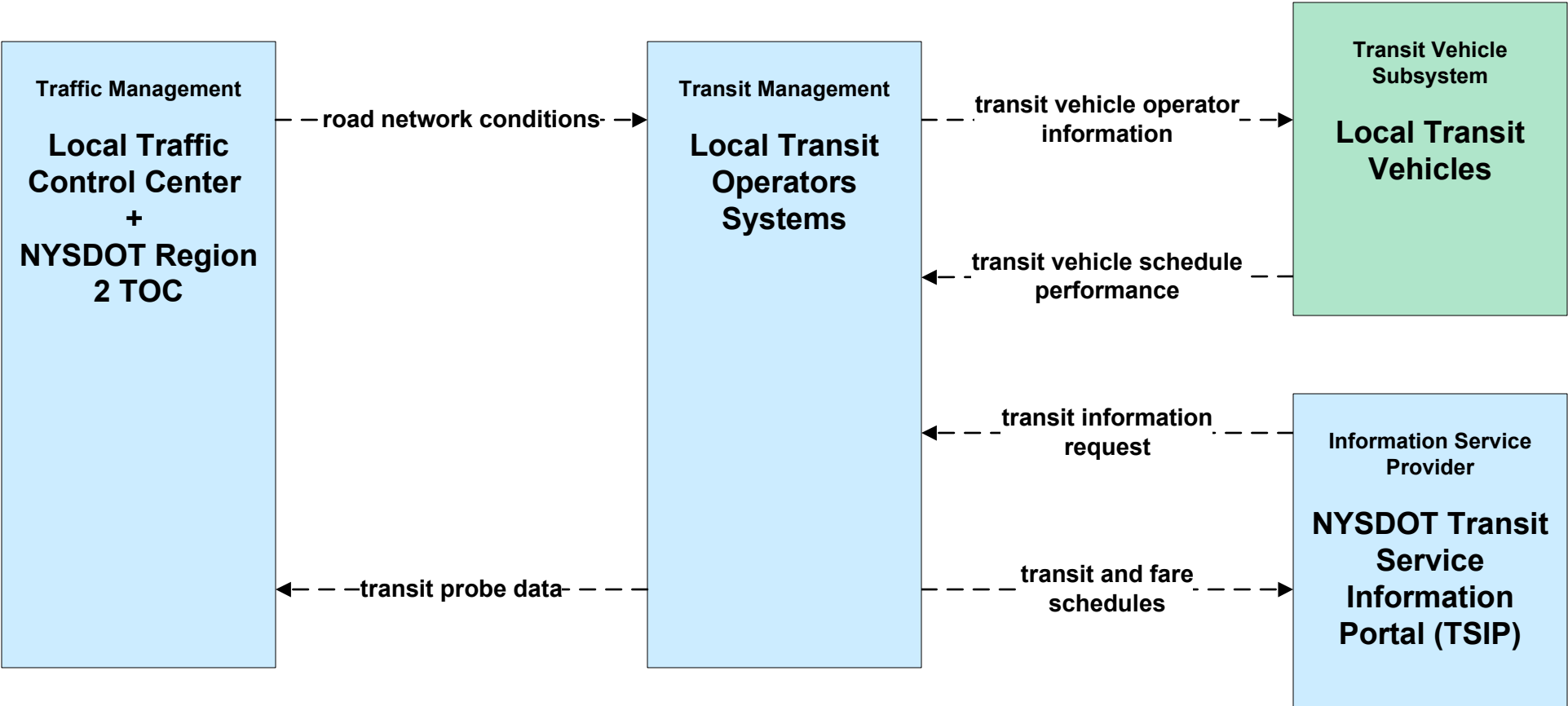
APTS01 - Transit Vehicle Tracking Local Transit Operators



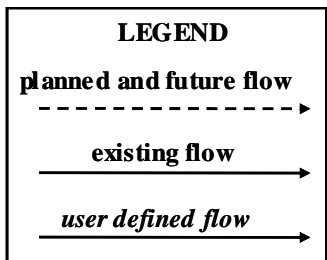
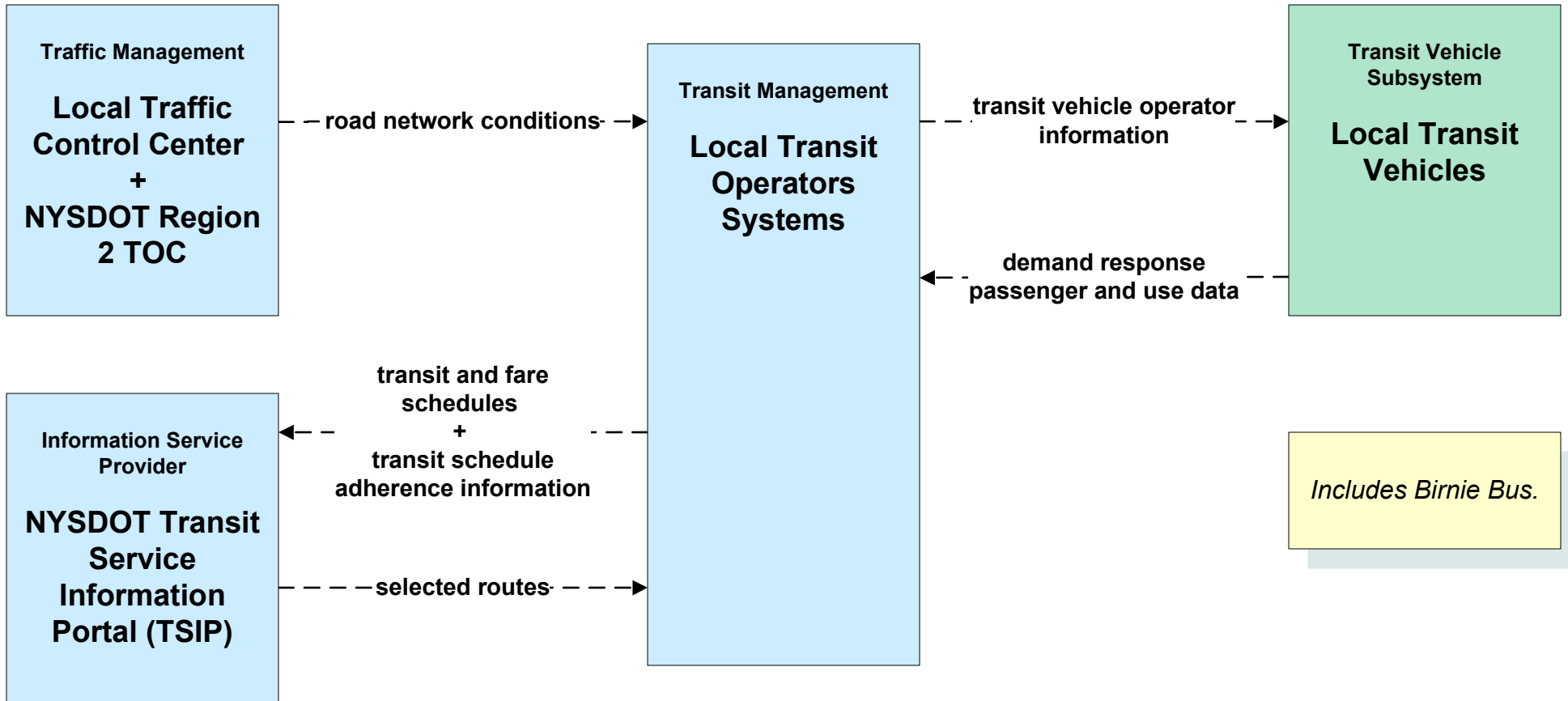
**APTS02 - Transit Fixed-Route Operations
NYSDOT TSIP**



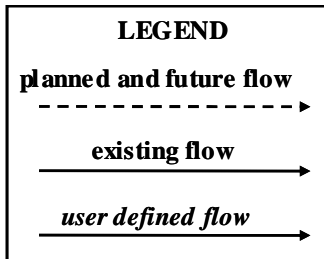
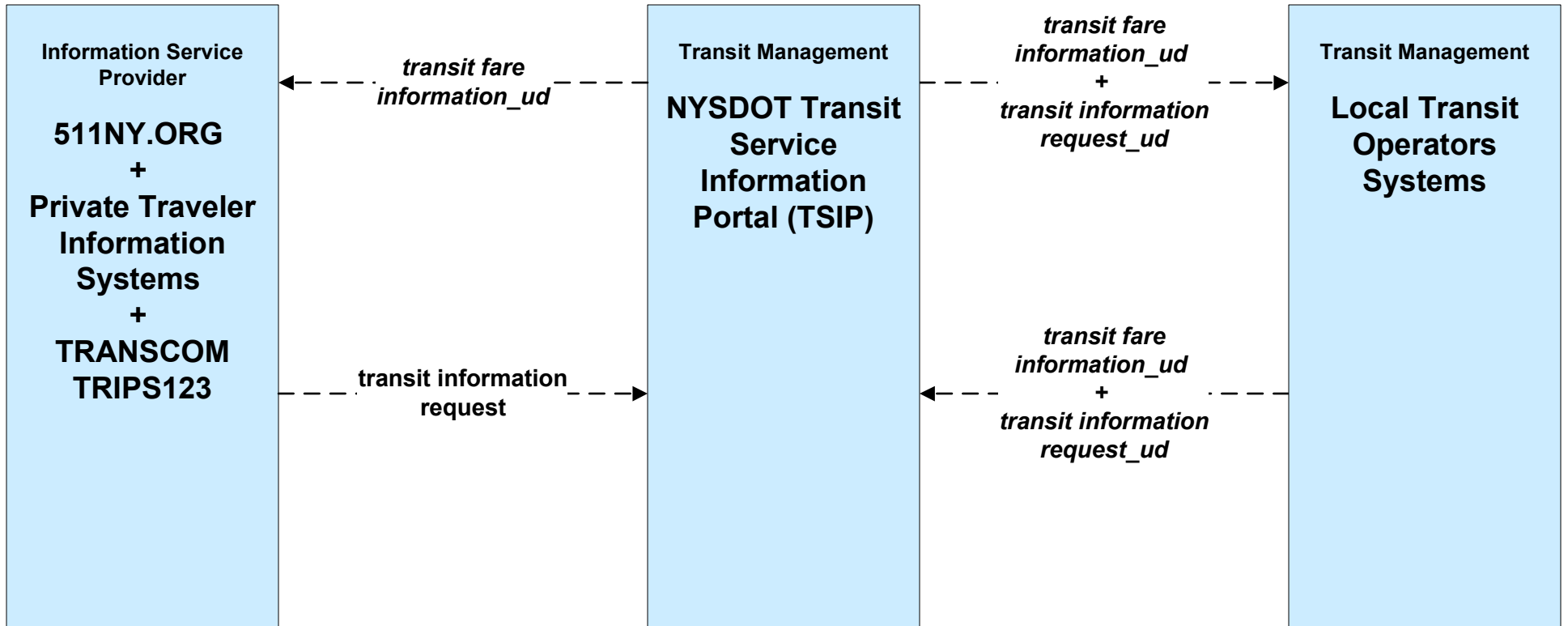
**APTS02 - Transit Fixed-Route Operations
Local Transit Operators**



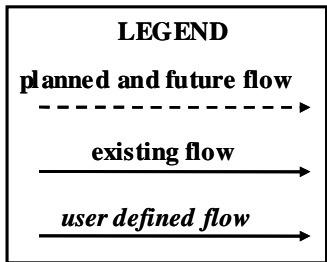
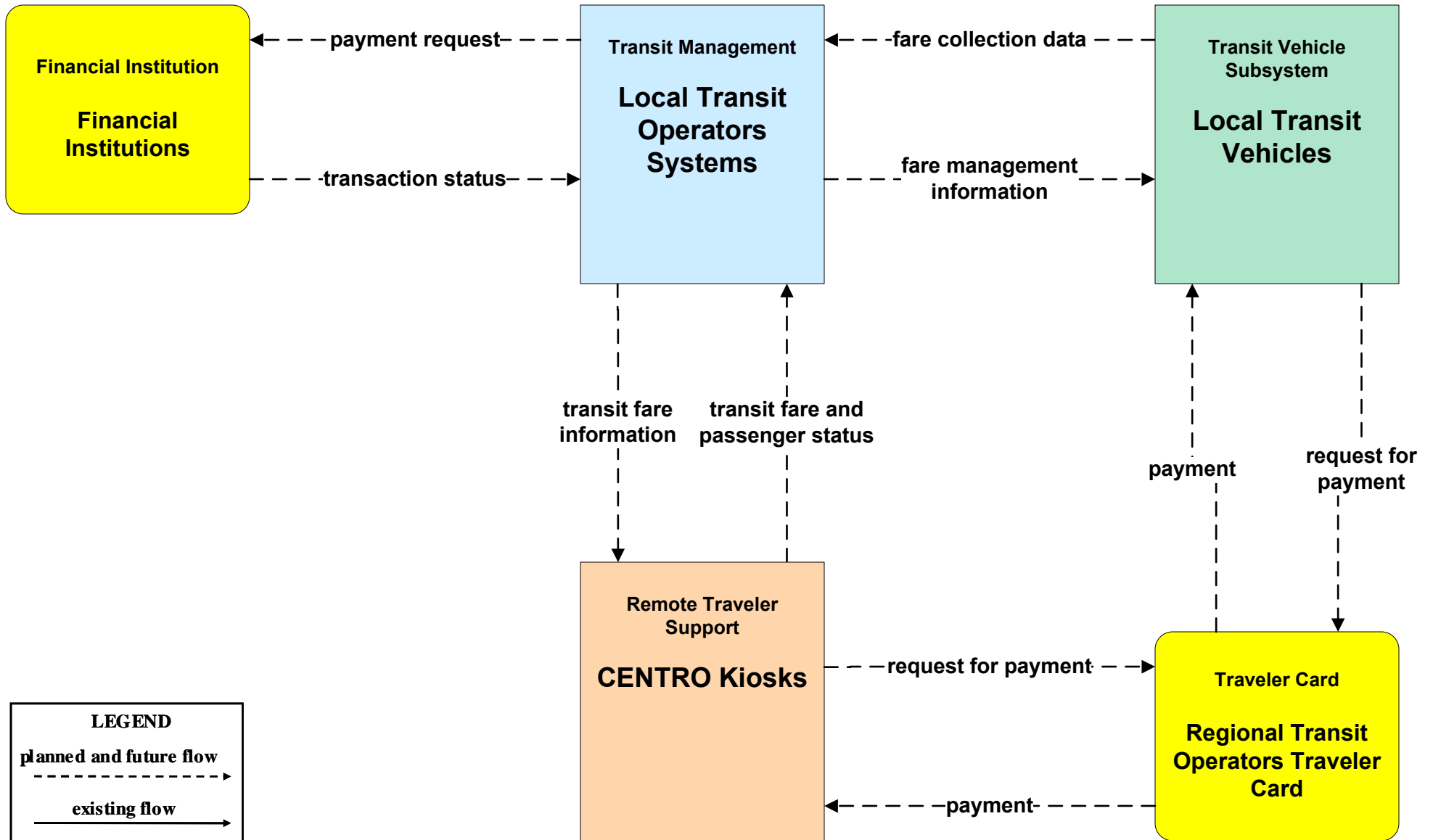
APTS03 - Demand Response Transit Operations Local Transit Operators



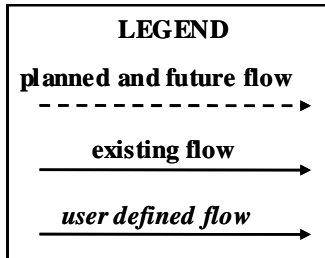
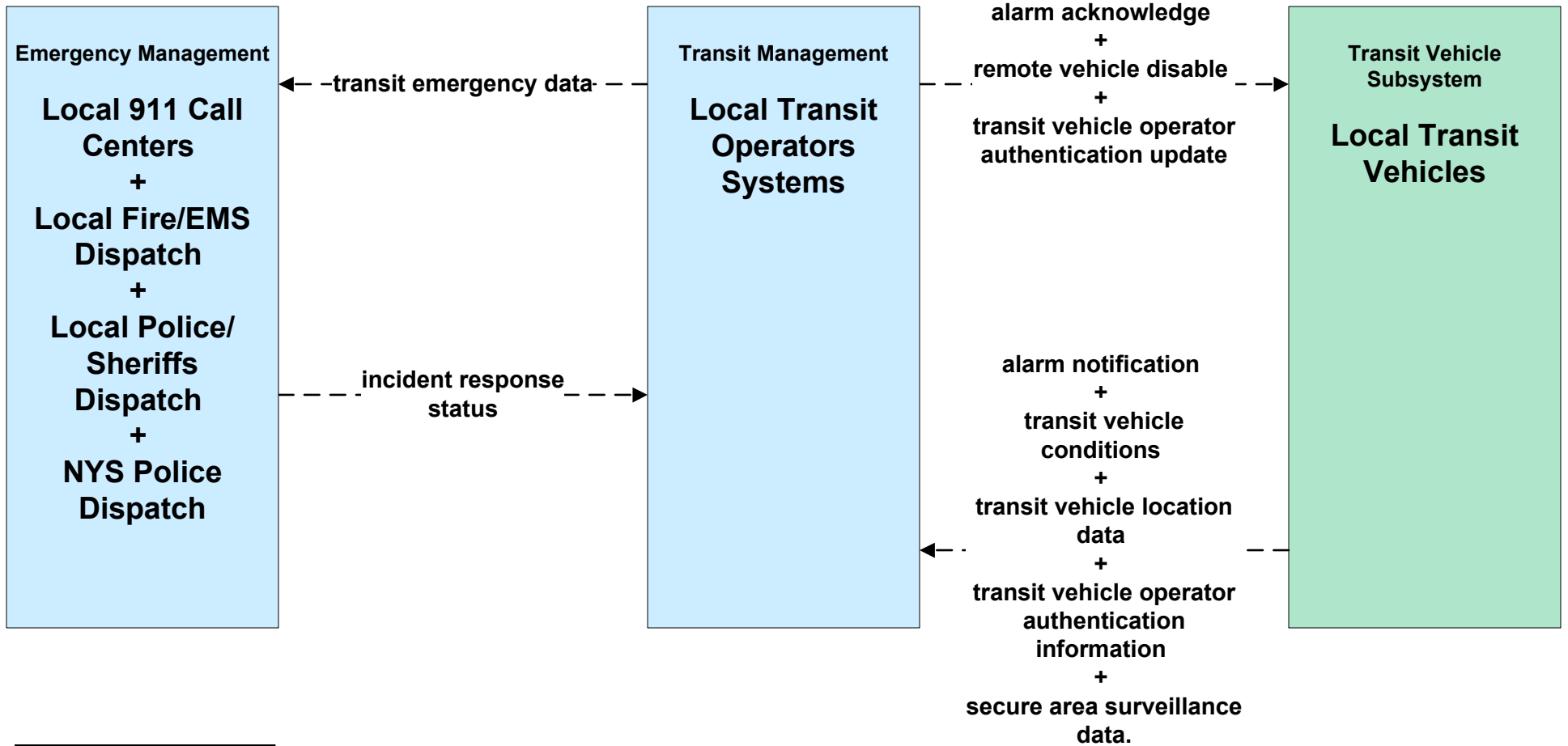
APTS04 - Transit Fare Collection Management NYSDOT TSIP



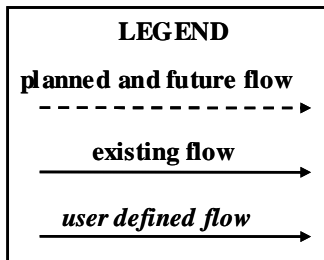
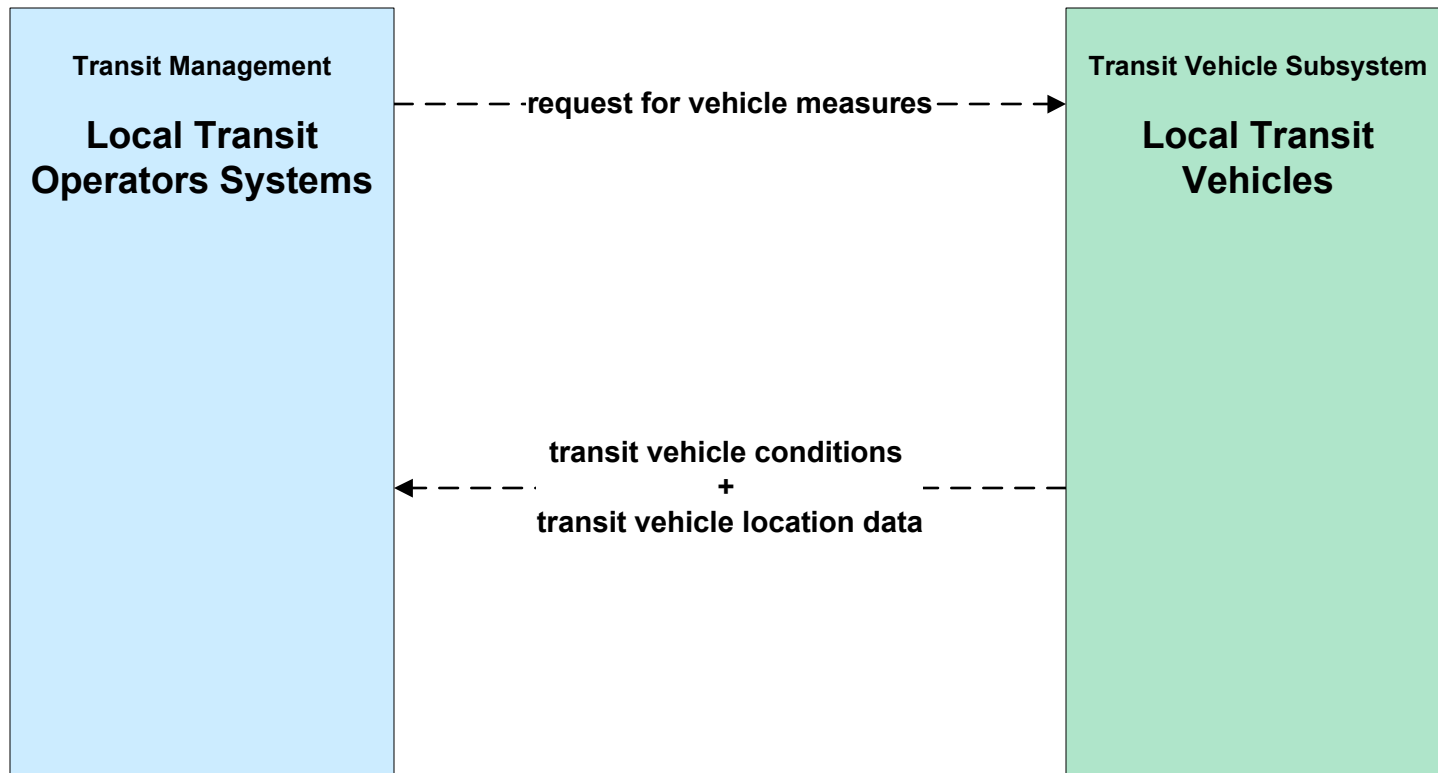
APTS04 - Transit Passenger and Fare Management Local Transit Operators



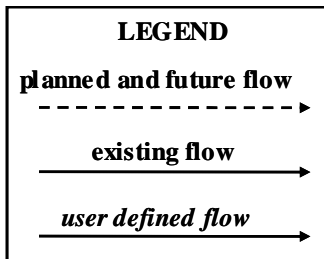
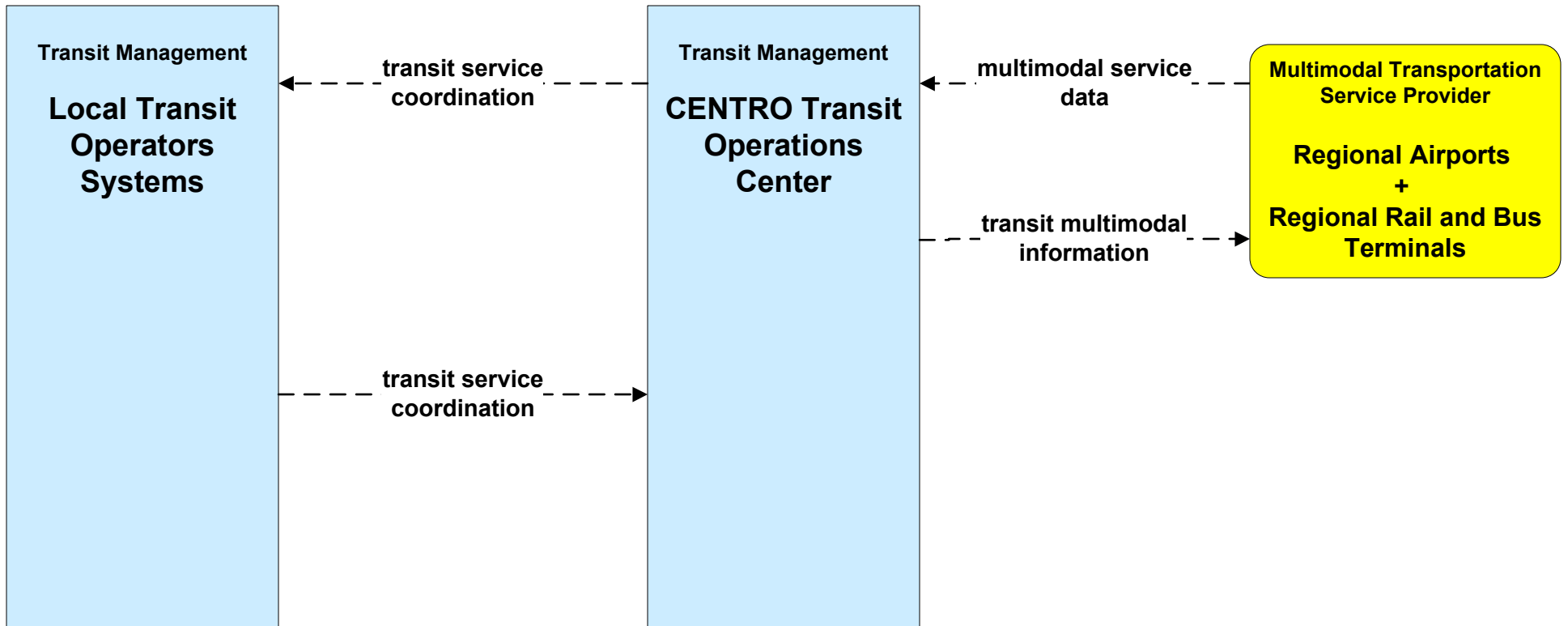
APTS05 - Transit Security Local Transit Operators



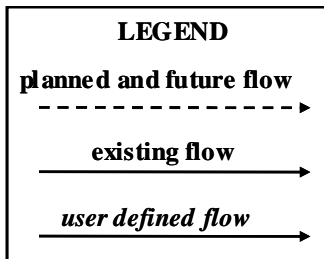
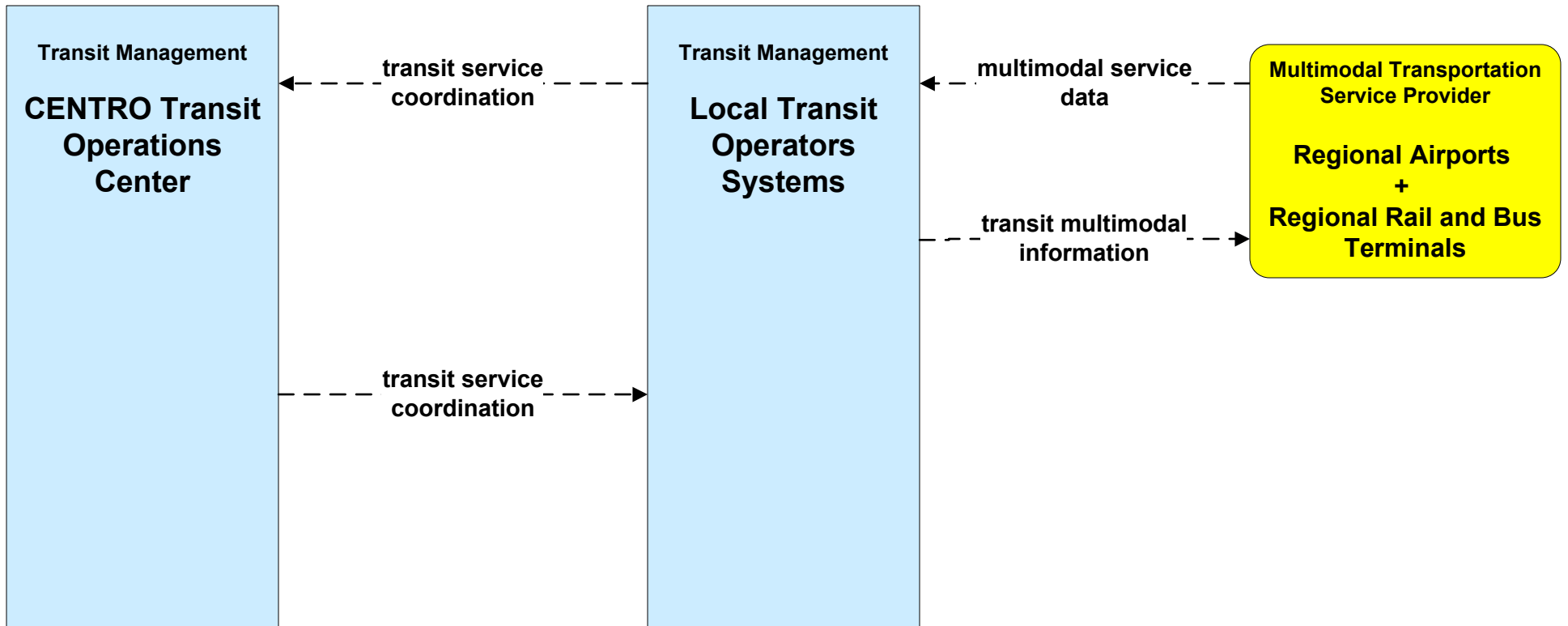
**APTS06 - Transit Maintenance
Local Transit Operators**



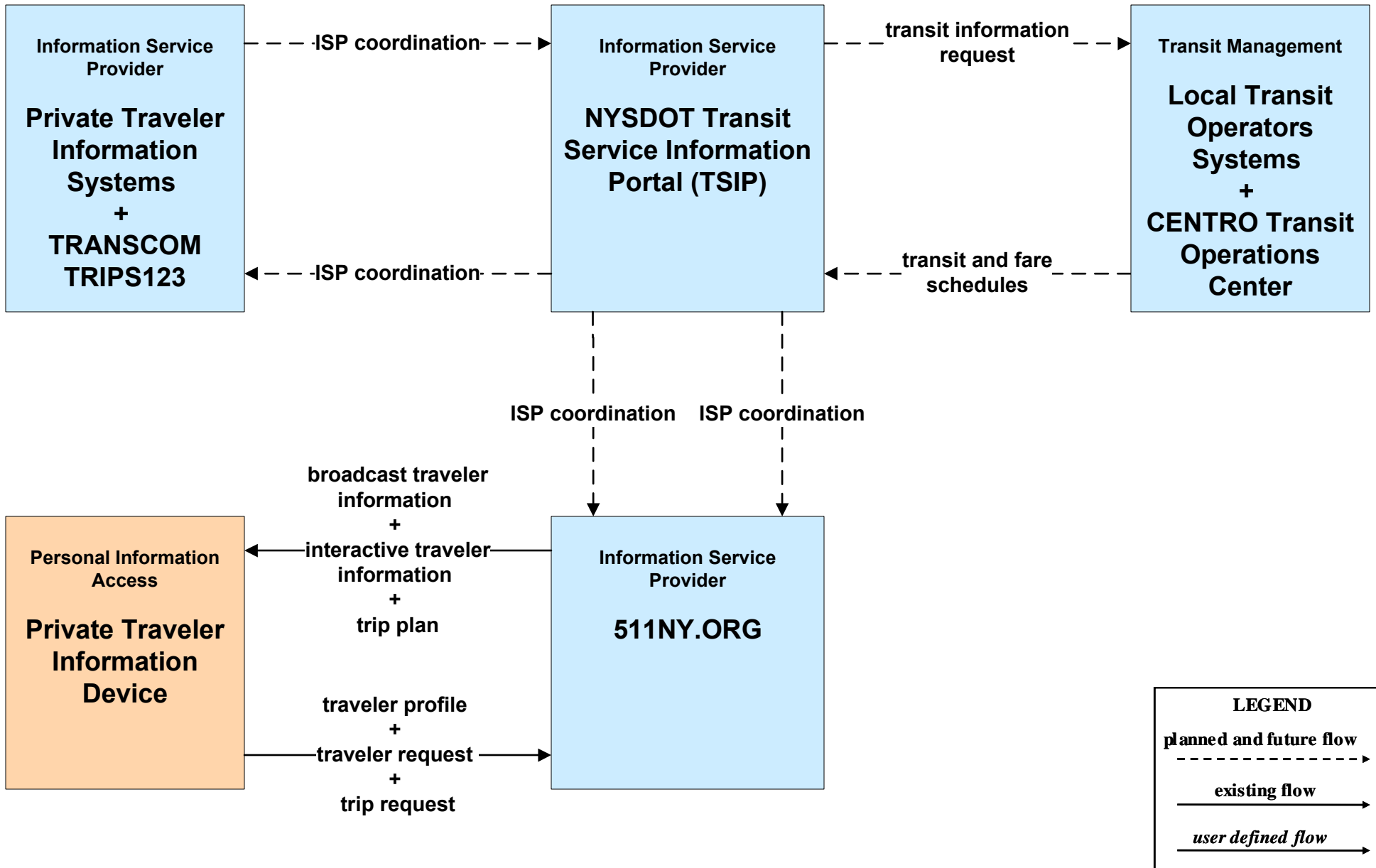
APTS07 - Multi-modal Coordination CENTRO



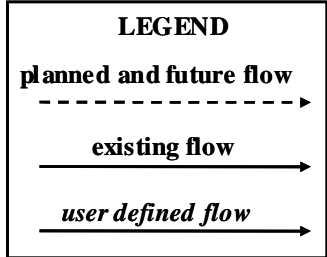
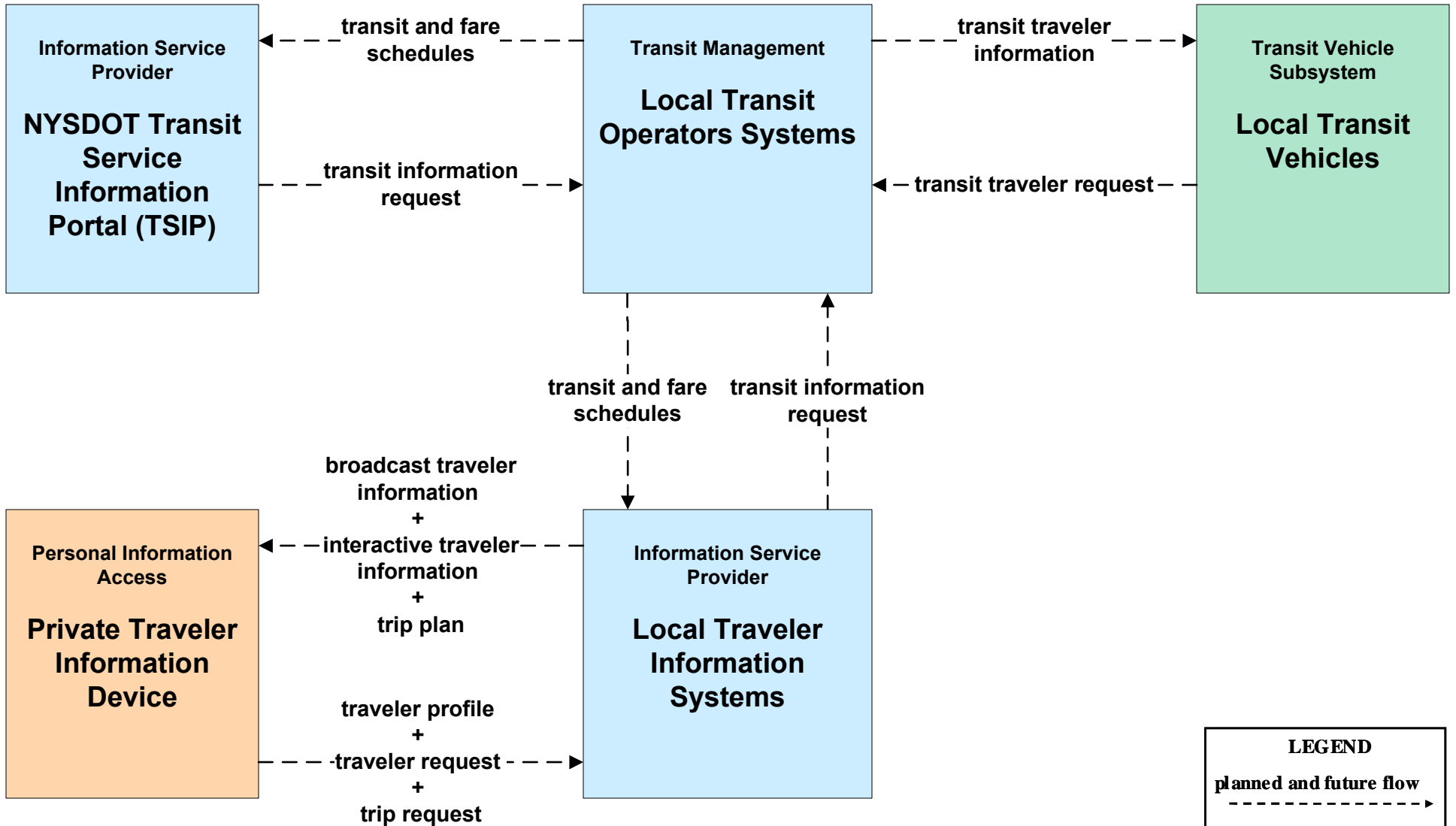
APTS07 - Multi-modal Coordination Local Transit Operators



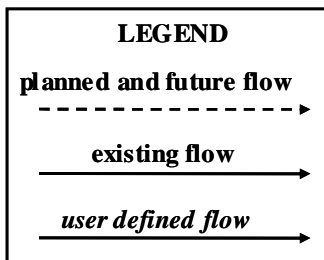
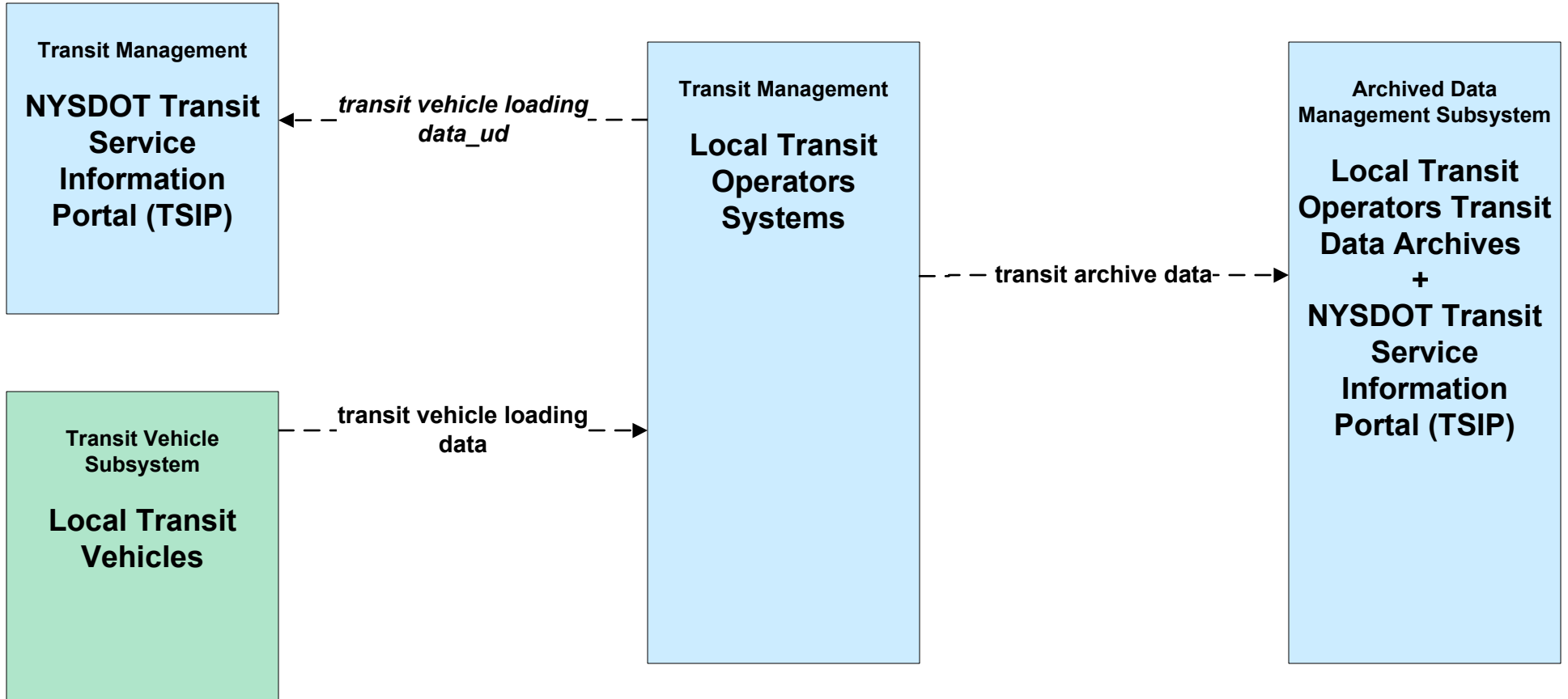
APTS08 - Transit Traveler Information NYSDOT TSIP



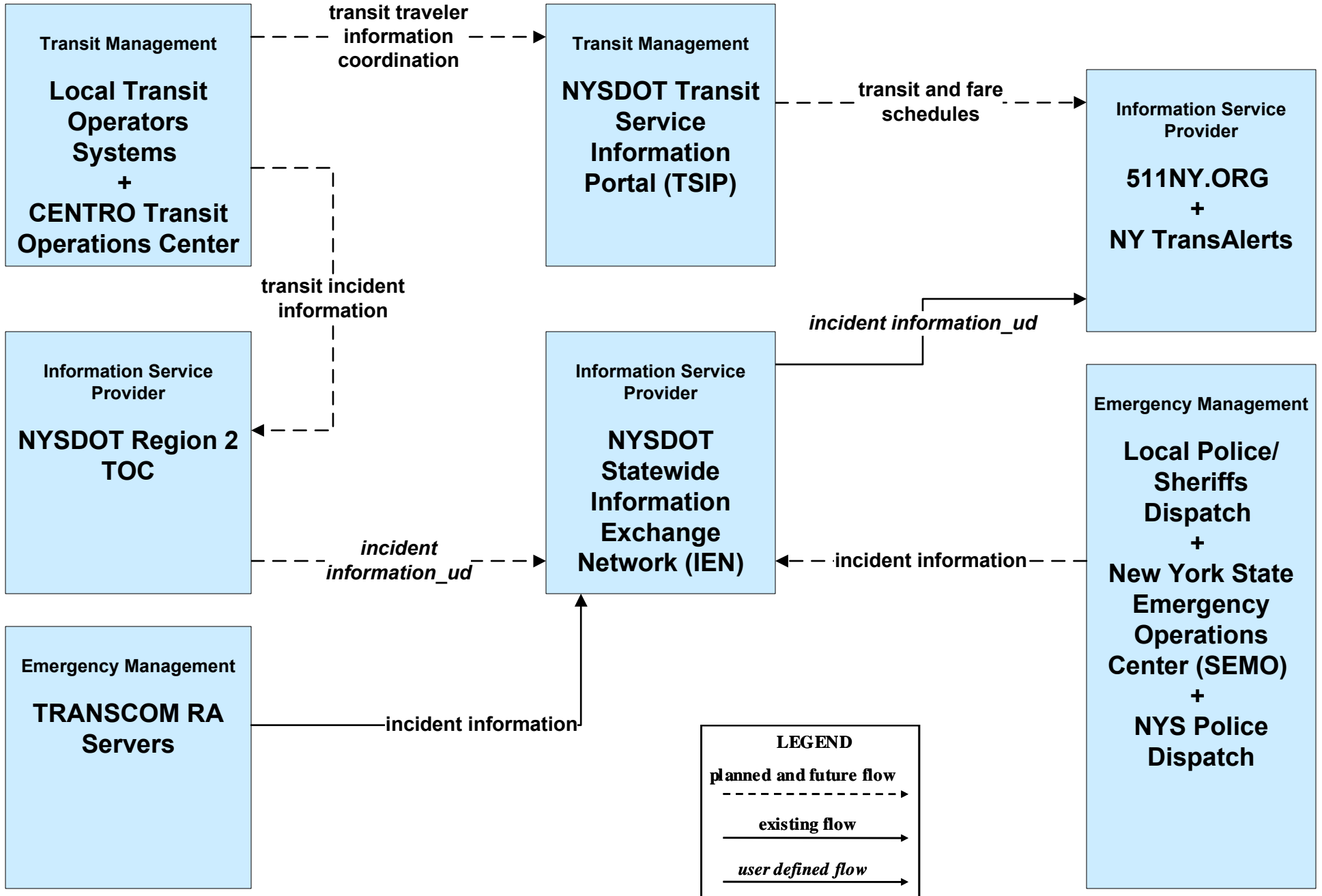
APTS08 - Transit Traveler Information Local Transit Operators



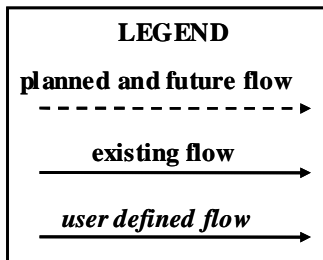
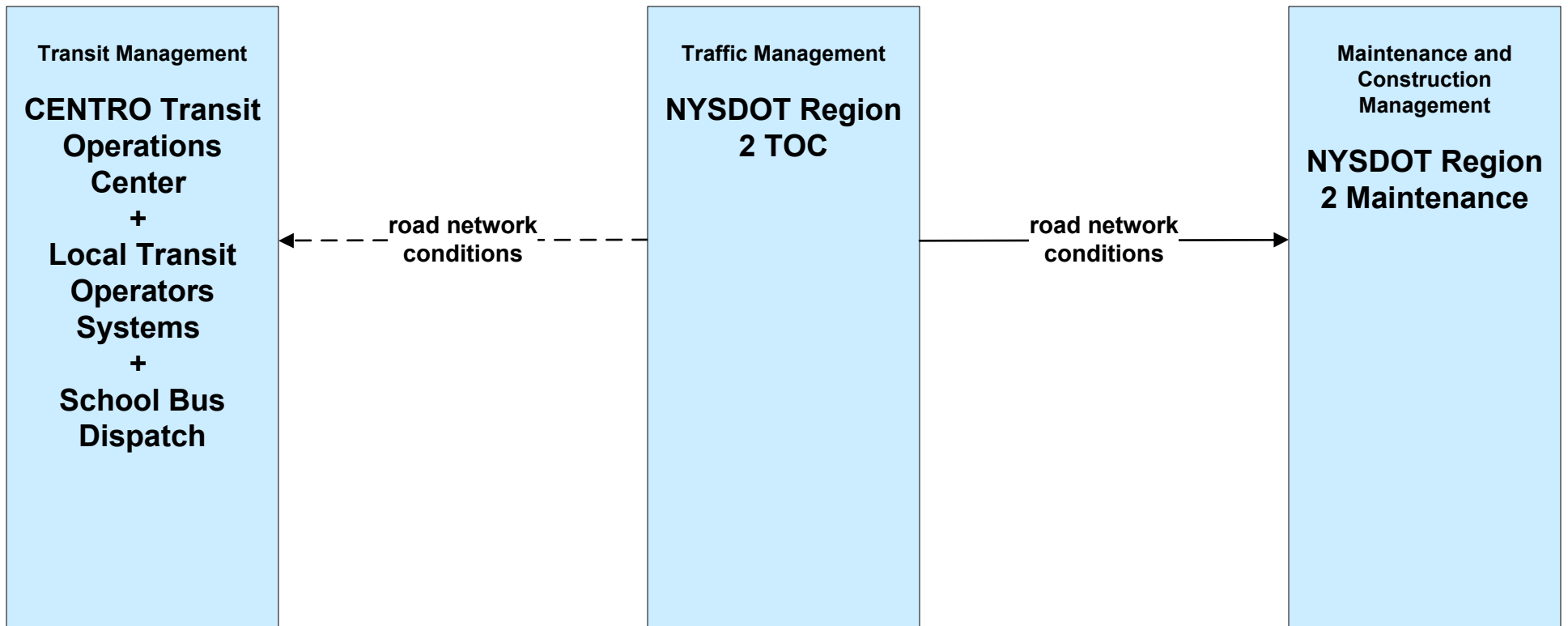
APTS10 - Transit Passenger Counting Local Transit Operators



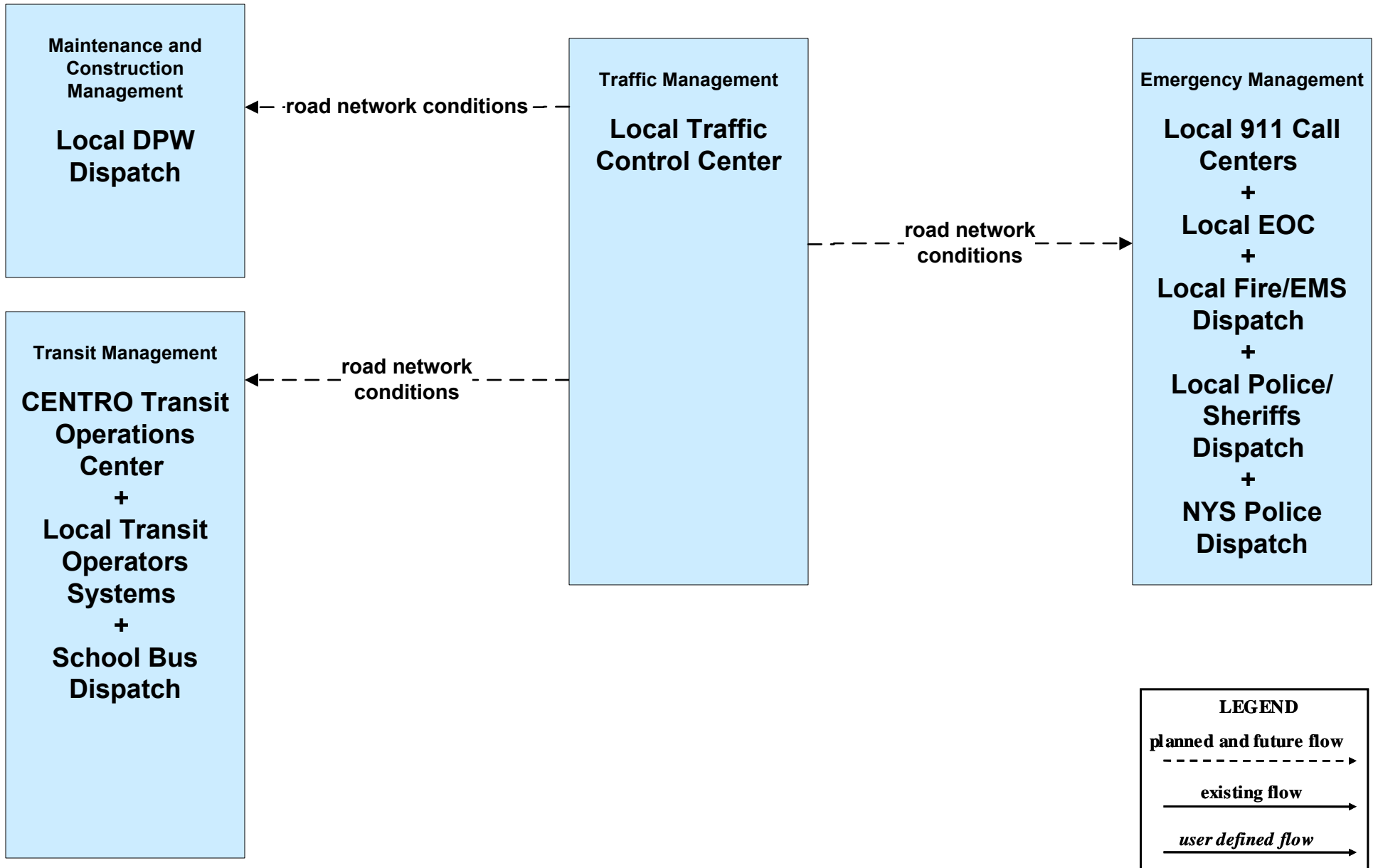
ATIS01 - Broadcast Traveler Information
511NY.ORG – Incidents (2 of 3)



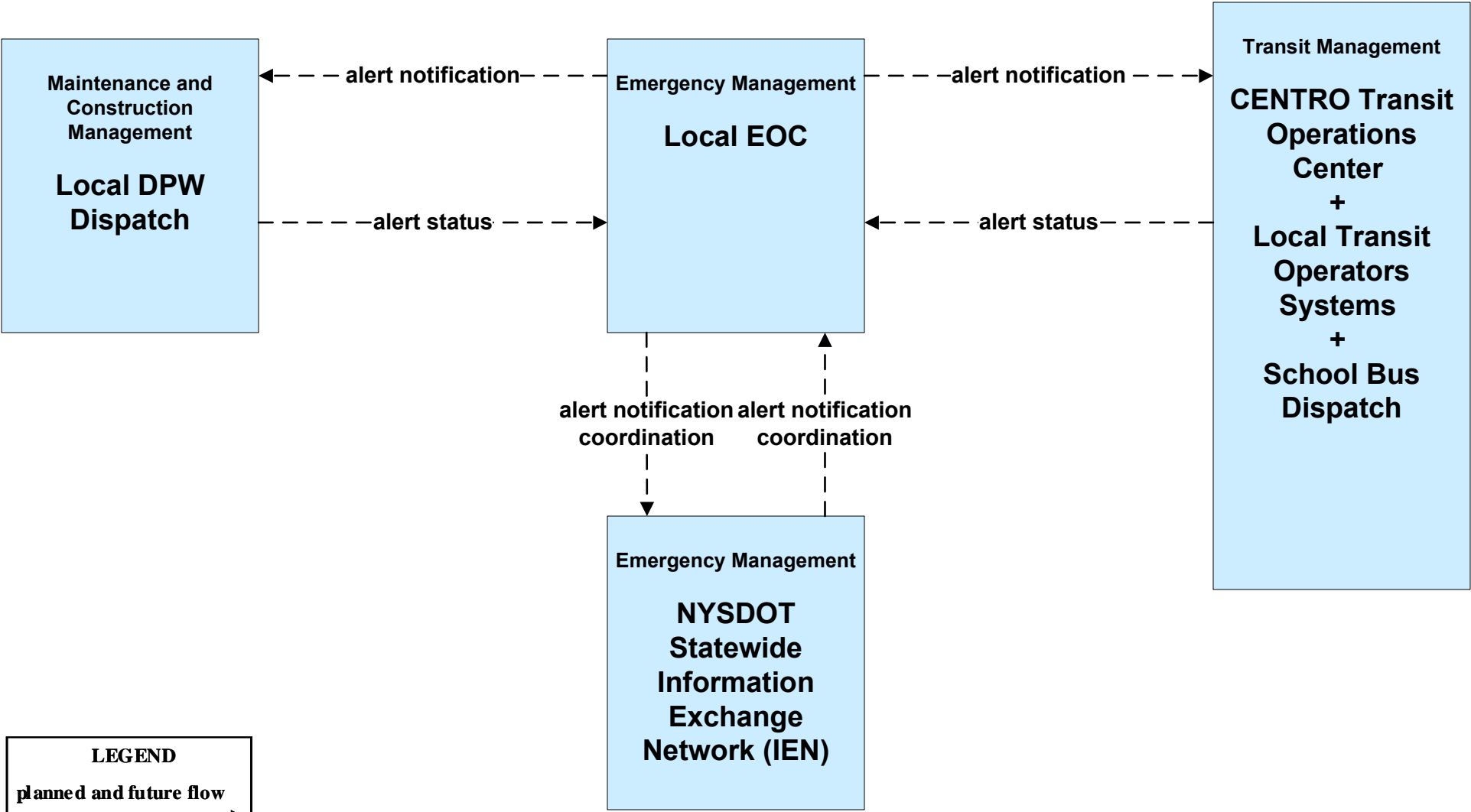
**ATMS06 - Traffic Information Dissemination
NYSDOT Region 2 (2 of 3)**



**ATMS06 - Traffic Information Dissemination
Local Cities and Counties (2 of 2)**



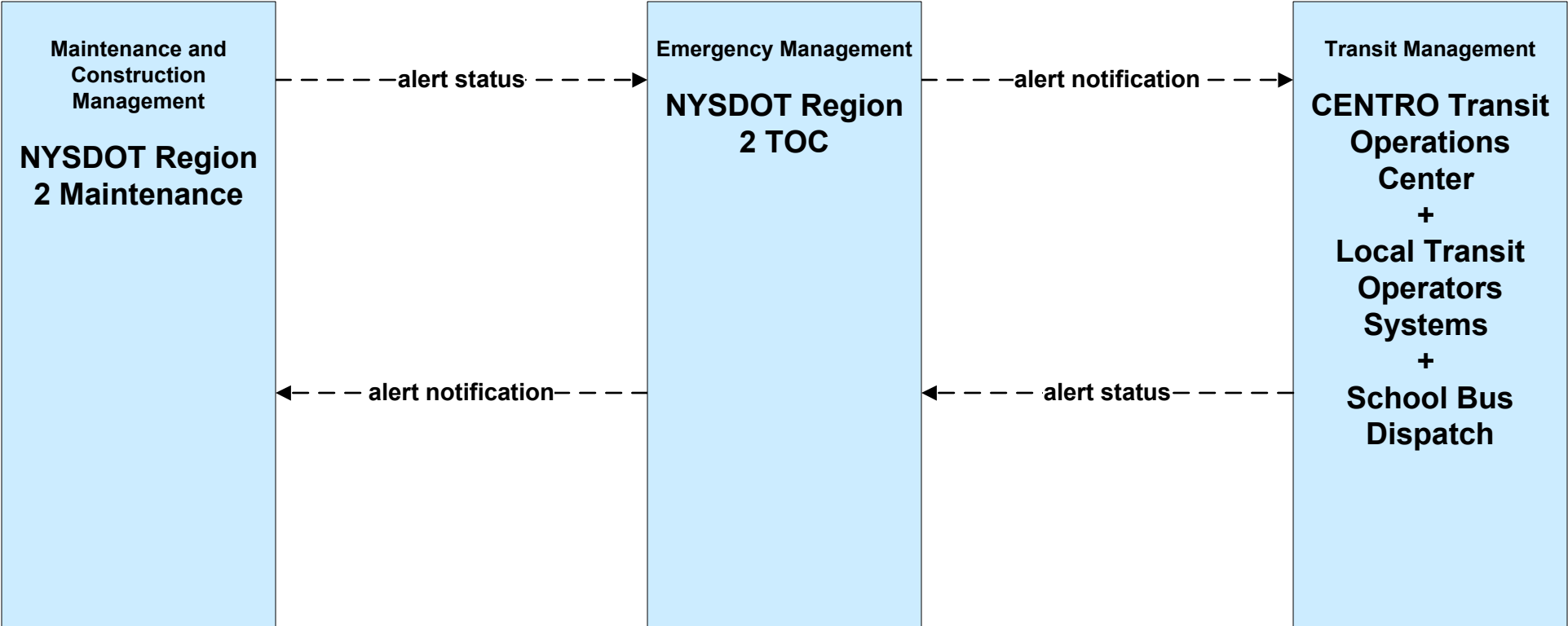
**EM06 - Wide Area Alert
Local EOC (2 of 2)**



LEGEND

- planned and future flow** (dashed line with arrow)
- existing flow** (solid line with arrow)
- user defined flow** (solid line with arrow)

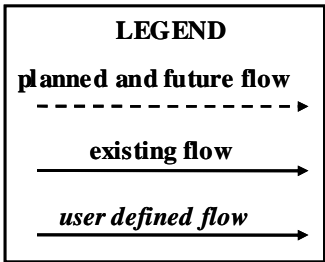
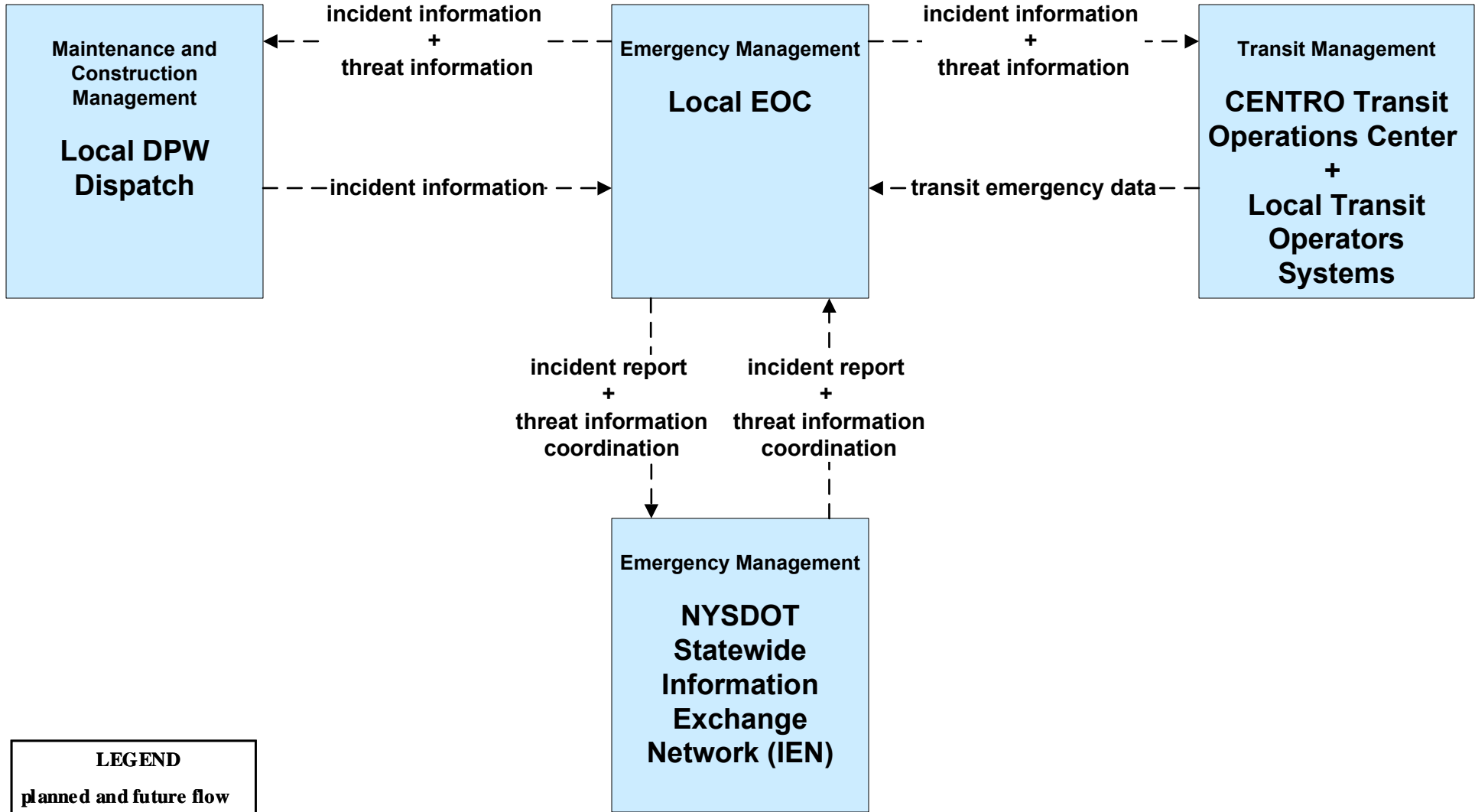
**EM06 - Wide Area Alert
NYSDOT Region 2**



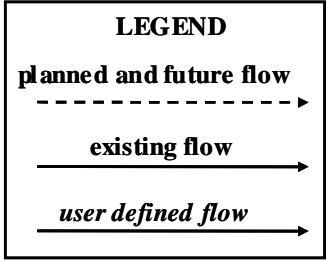
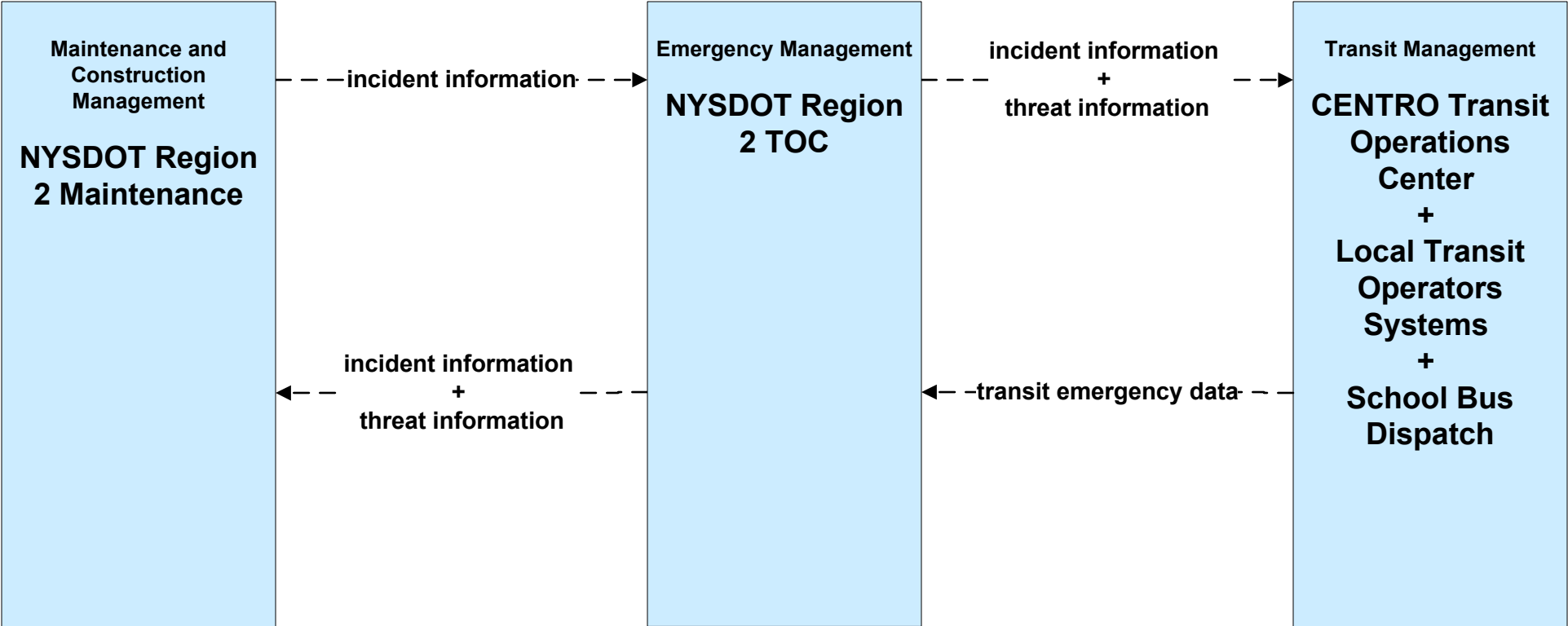
LEGEND

- planned and future flow** (dashed arrow)
- existing flow** (solid arrow)
- user defined flow** (solid arrow)

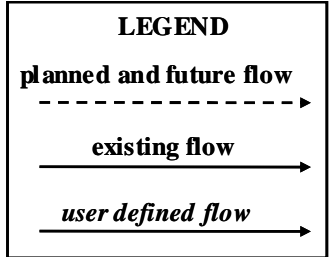
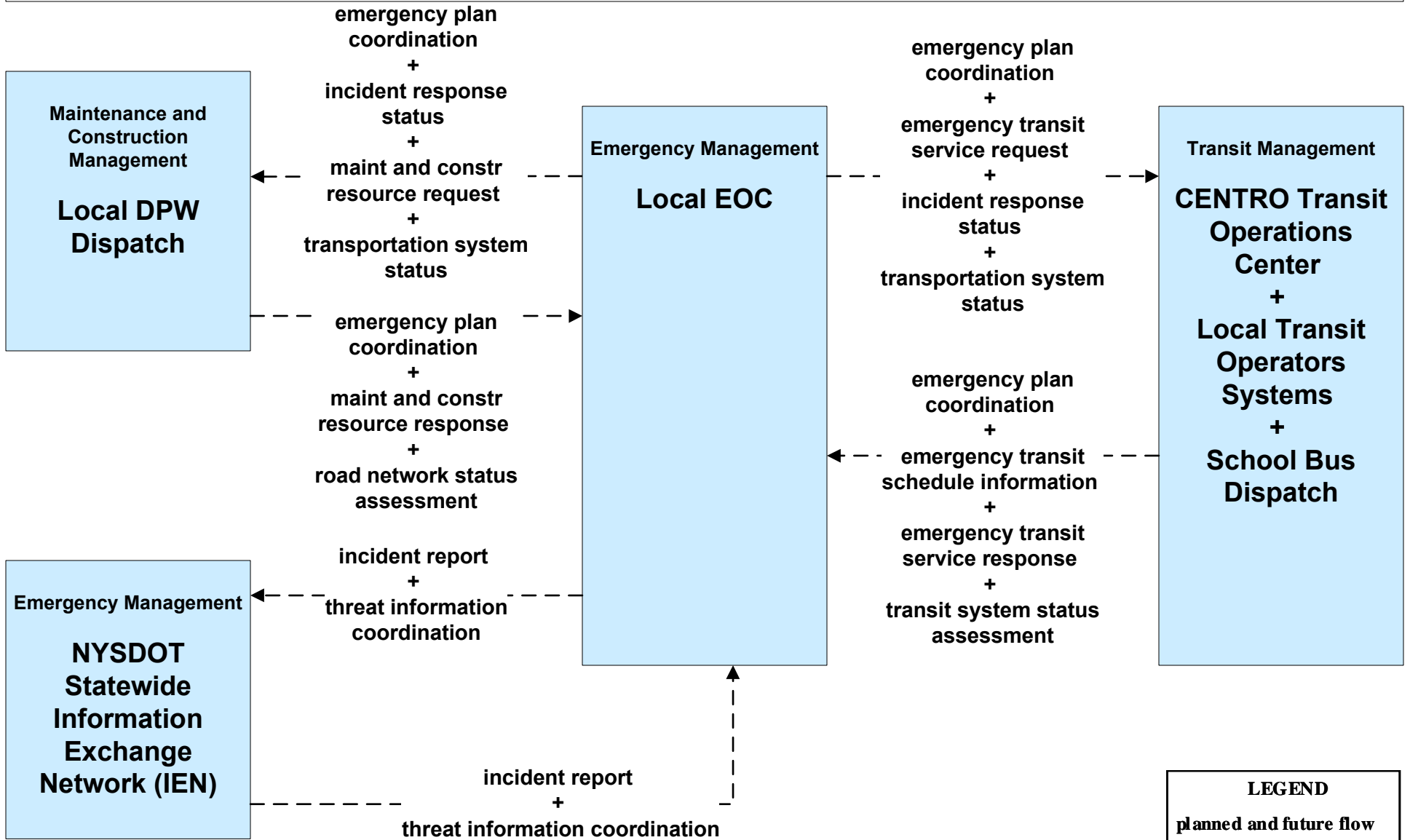
**EM07 - Early Warning System
Local EOC (2 of 2)**



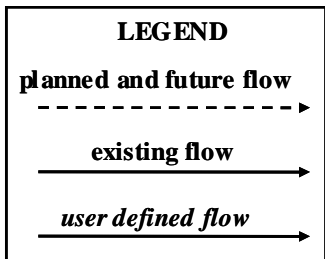
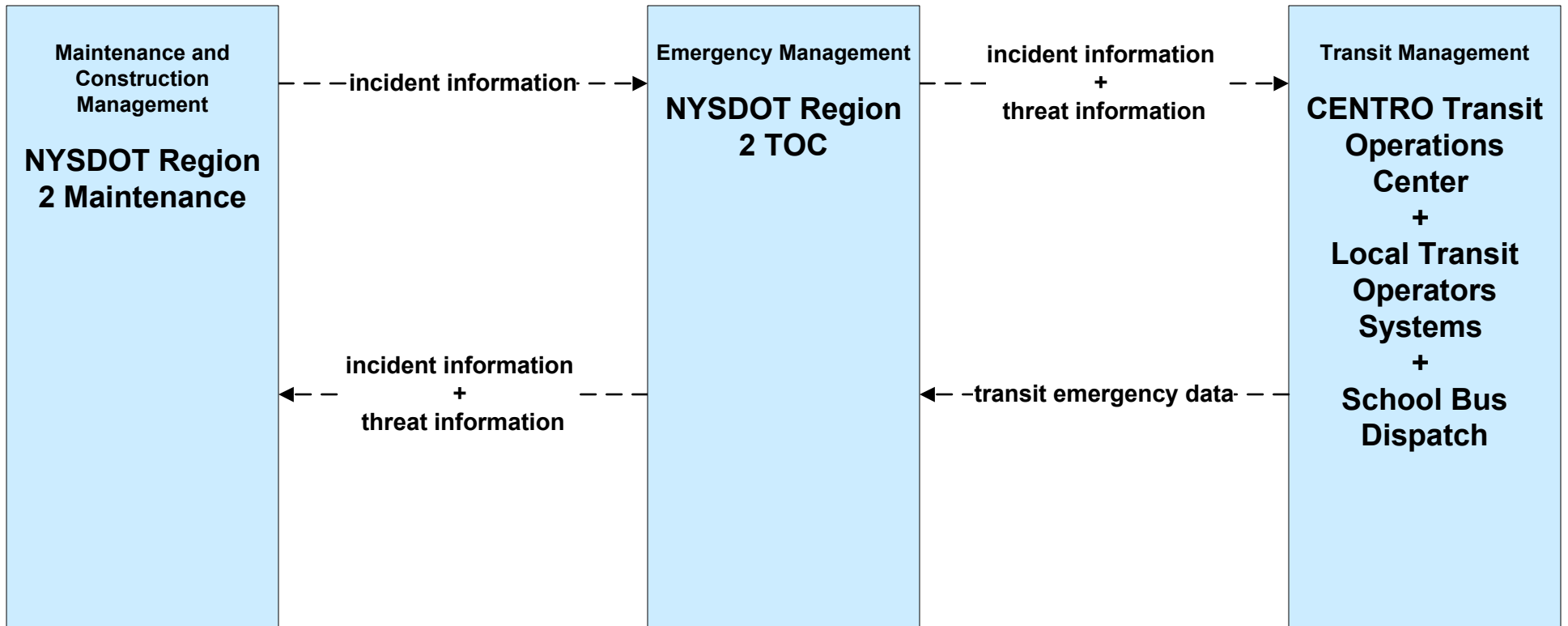
**EM07 – Early Warning System
NYSDOT Region 2**



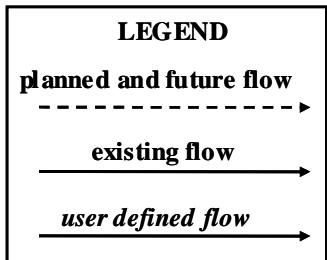
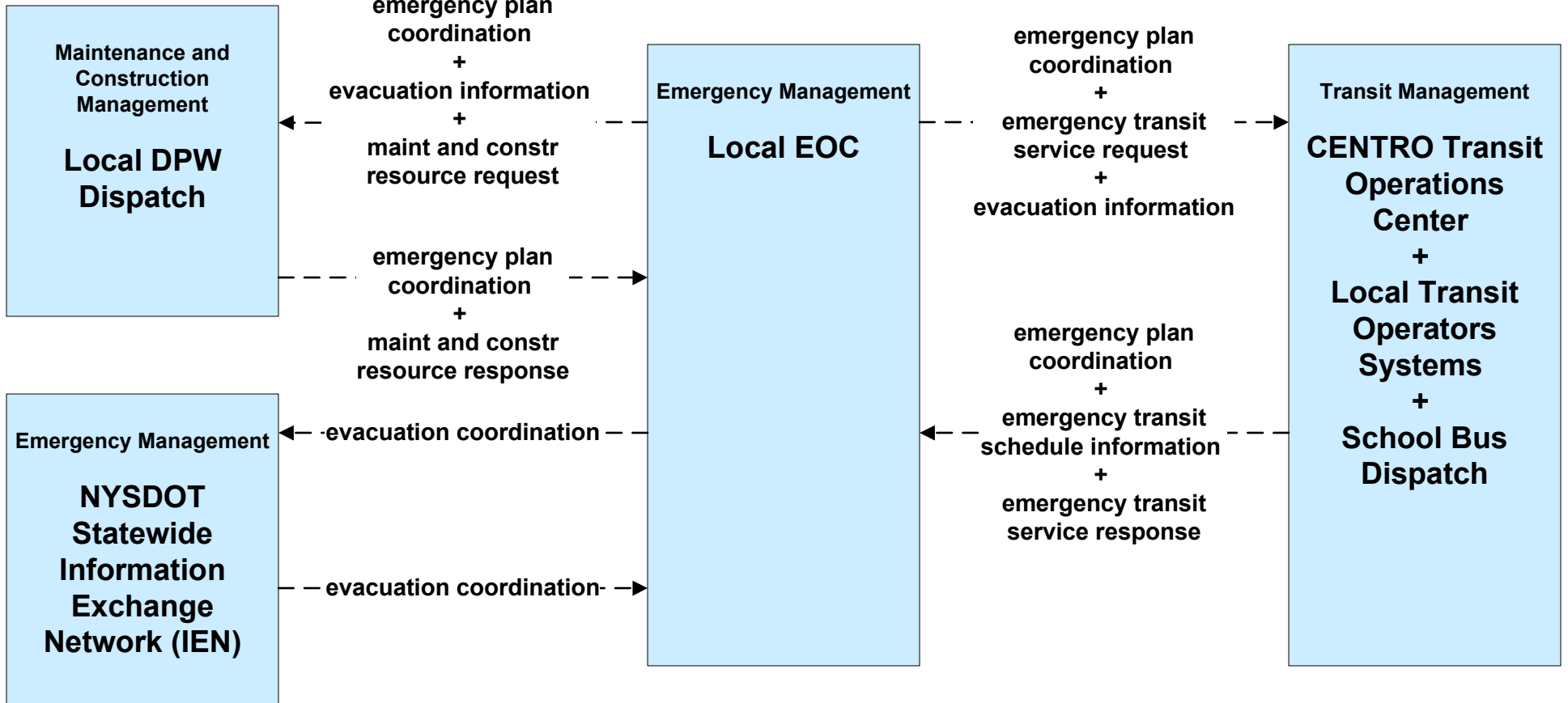
**EM08 – Disaster Recovery and Response
Local EOC (2 of 2)**



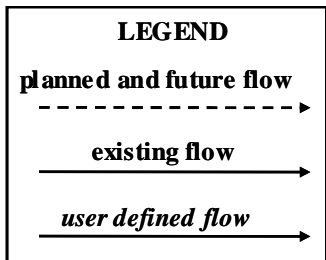
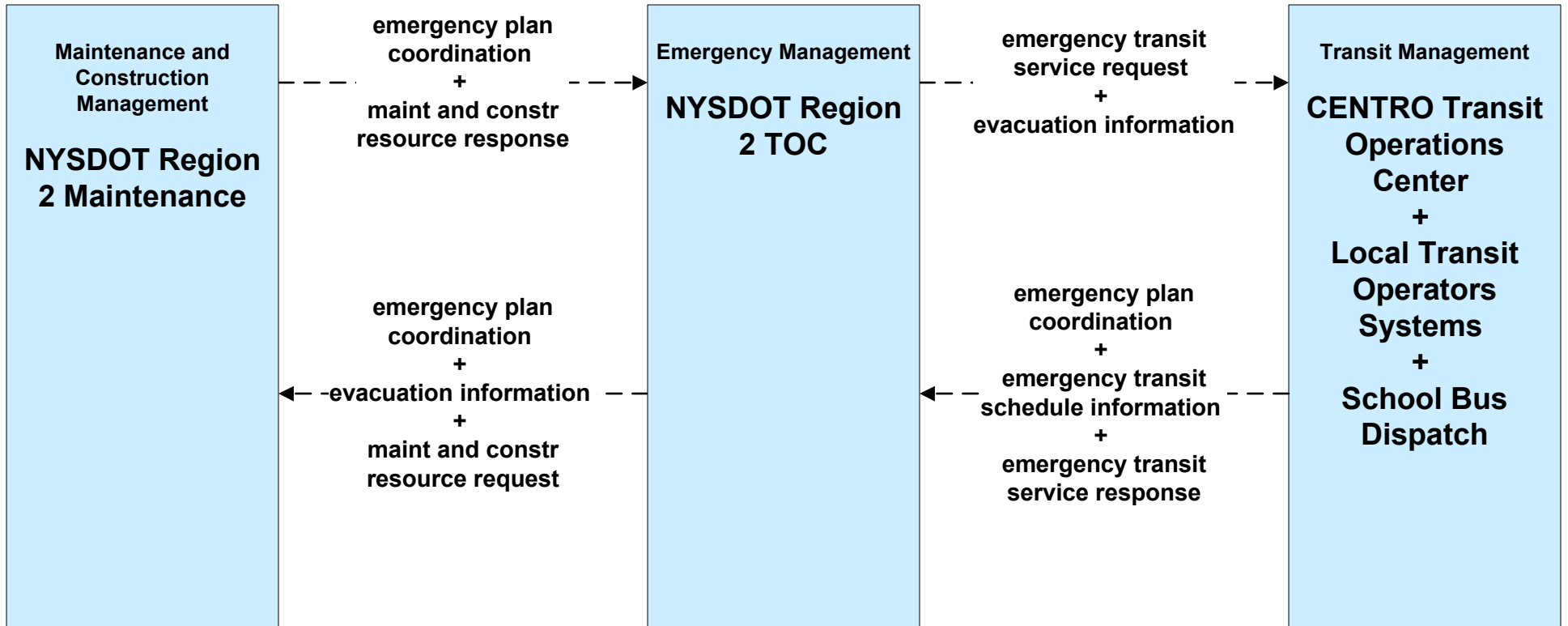
**EM08 – Disaster Recovery and Response
NYSDOT Region 2**



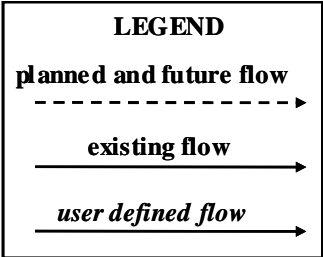
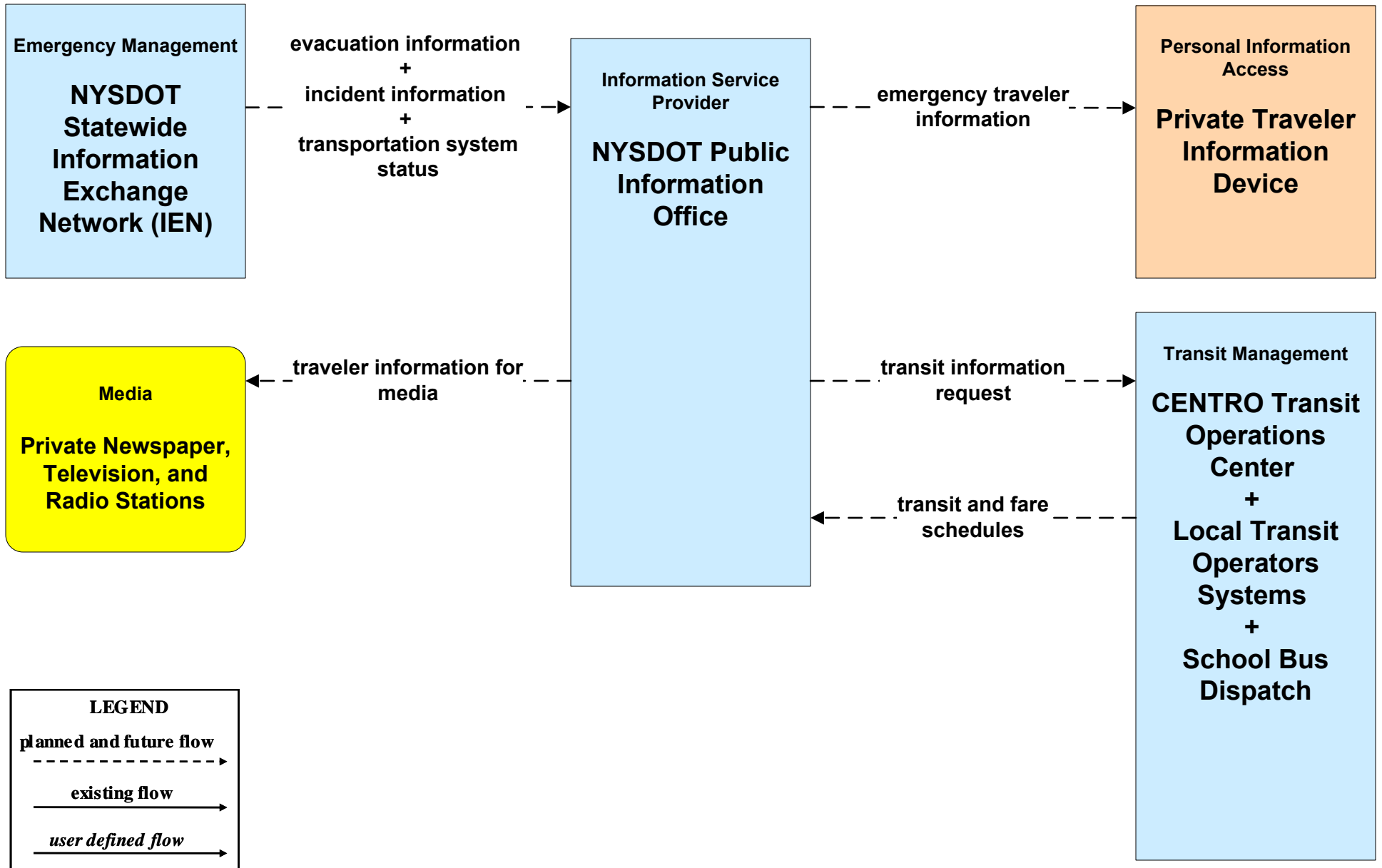
**EM09 – Evacuation and Reentry Management
Local EOC (2 of 2)**



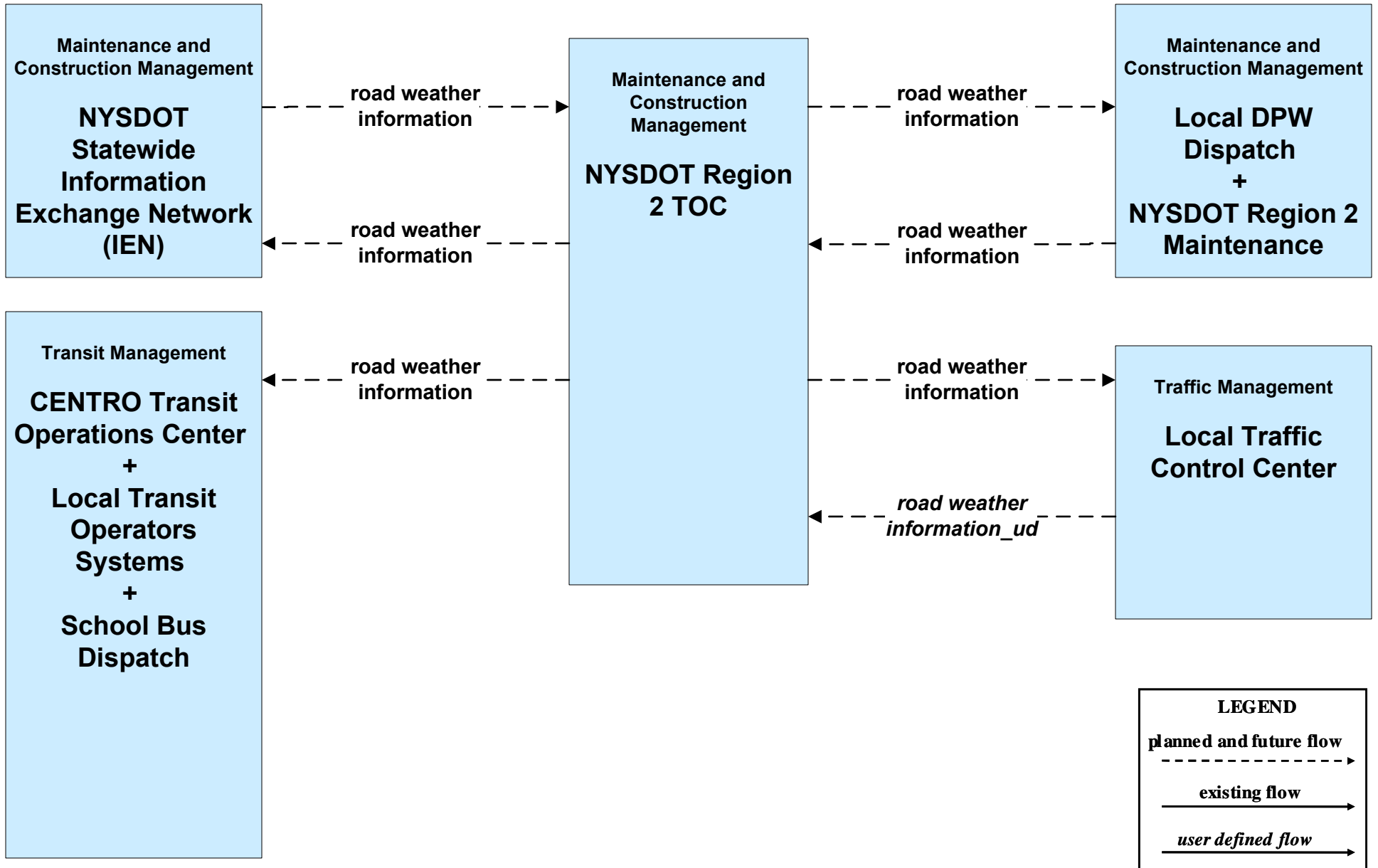
**EM09 – Evacuation and Reentry Management
NYSDOT Region 2**



**EM10 - Disaster Traveler Information
 NYSDOT Public Information Office System**



**MC04 – Weather Information Processing and Distribution
 NYSDOT Region 2 (1 of 2)**



MC04 - Weather Information Processing and Distribution Local Cities and Counties

**Surface Transportation
Weather Service**

**Clarus
+
NYSDOT Maintenance
Decision Support
System (MDSS)
+
Private Weather
Service Systems**

LEGEND

planned and future flow
----->

existing flow
—————>

user defined flow
—————>

**Maintenance and
Construction
Management**

**Local DPW
Dispatch**

Traffic Management

**Local Traffic
Control Center**

Transit Management

**CENTRO Transit
Operations Center
+
Local Transit
Operators
Systems
+
School Bus
Dispatch**

Emergency Management

**Local 911 Call
Centers
+
Local EOC
+
Local Fire/EMS
Dispatch
+
Local Police/
Sheriffs Dispatch
+
NYS Police
Dispatch**

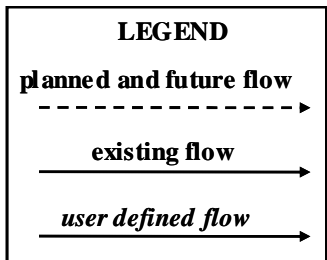
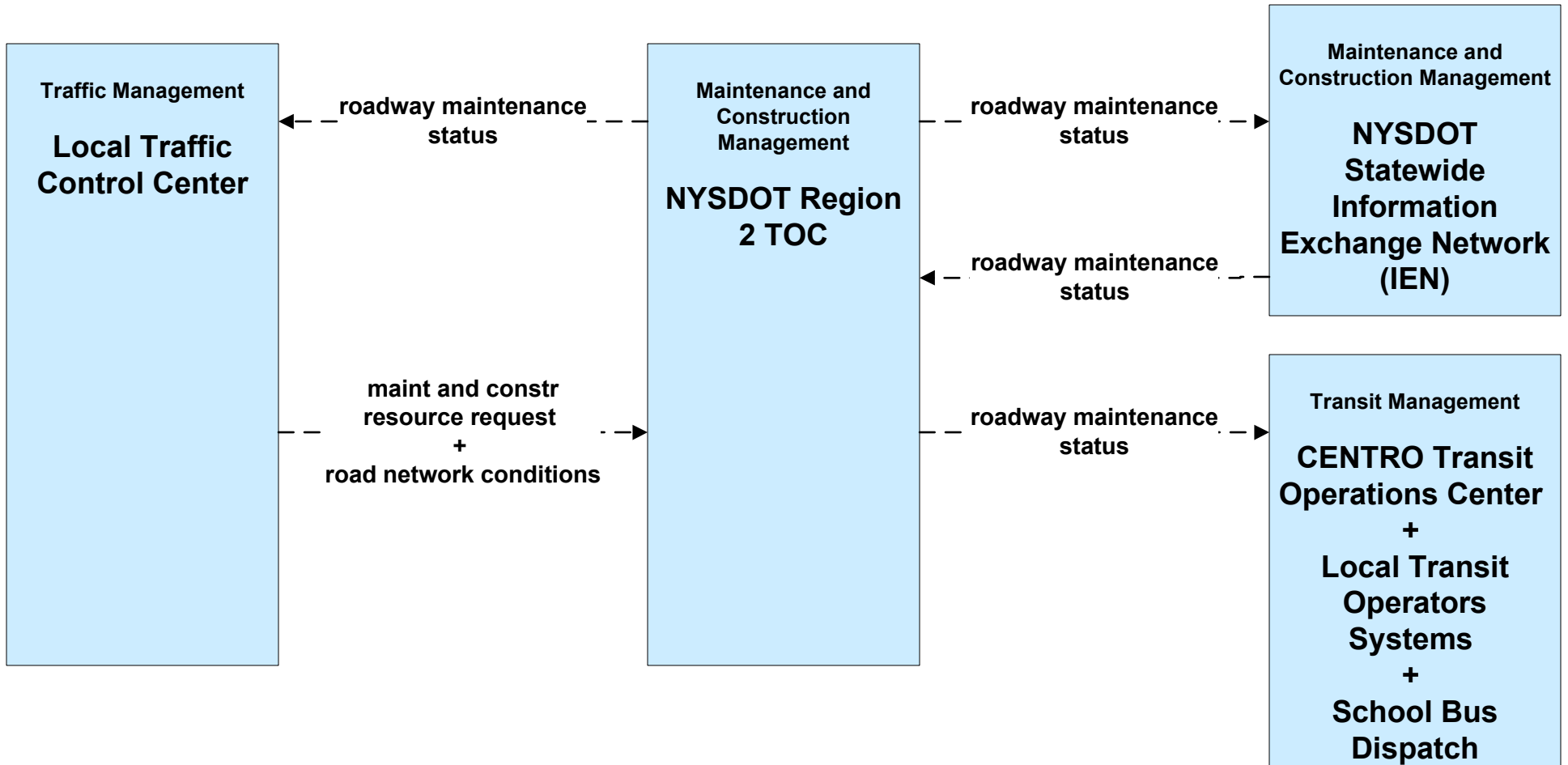
*road weather
information* ----->

*road weather
information* ----->

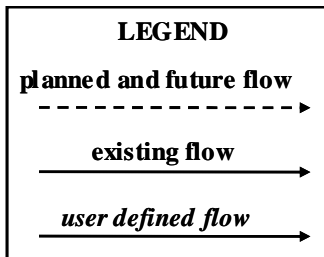
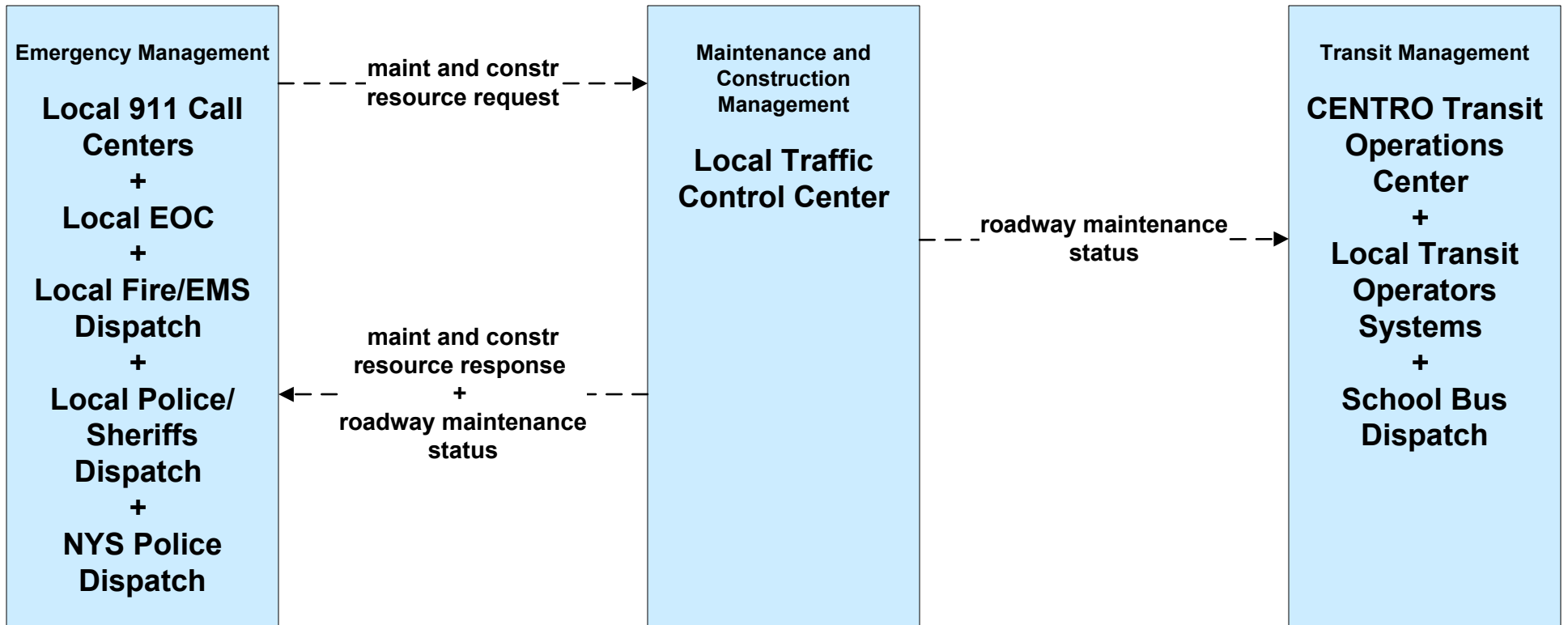
*road weather
information_ud* ----->

*road weather
information_ud* ----->

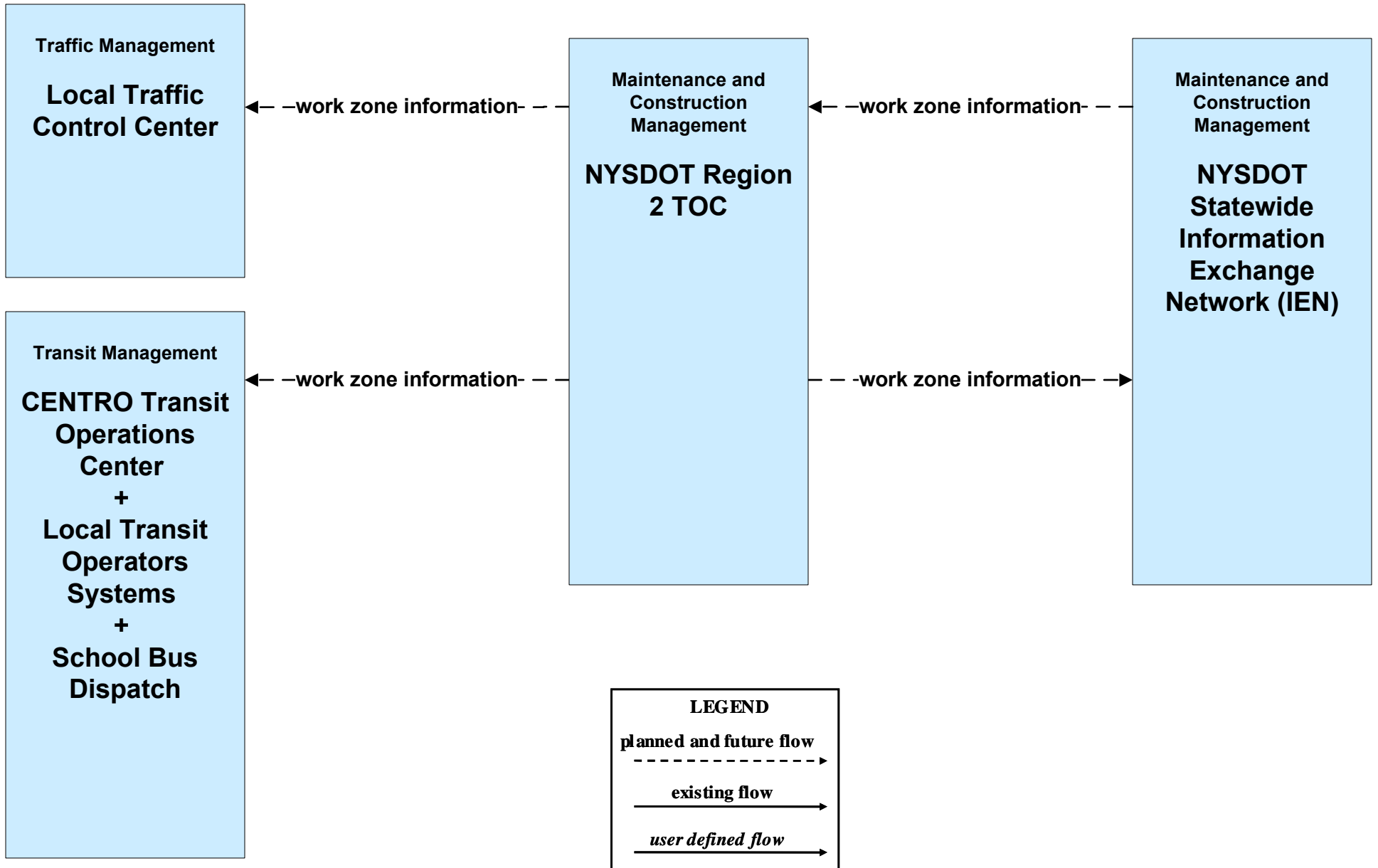
**MC06 – Winter Maintenance
NYSDOT Region 2 (2 of 3)**



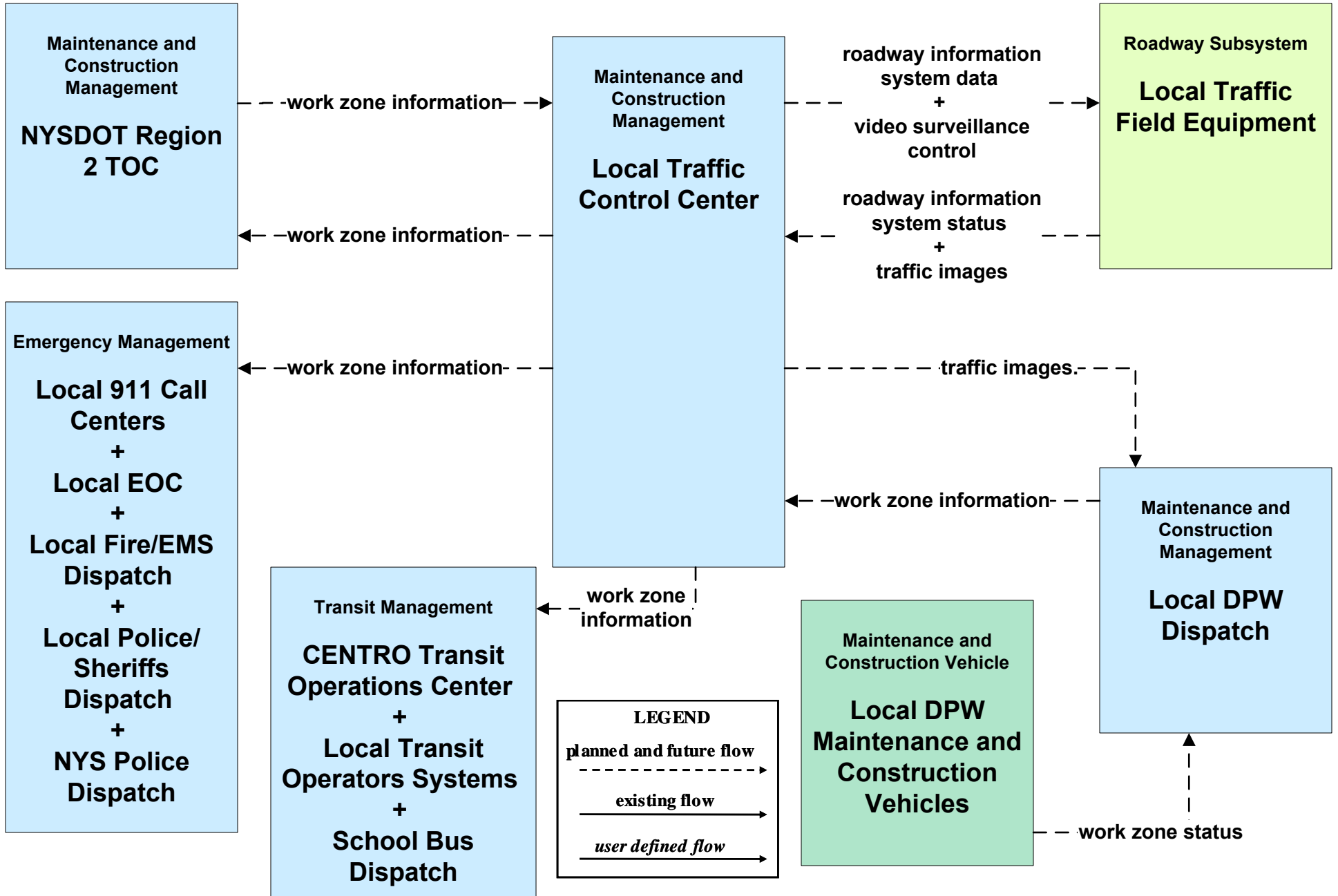
**MC06 - Winter Maintenance
Local Cities and Counties (2 of 2)**



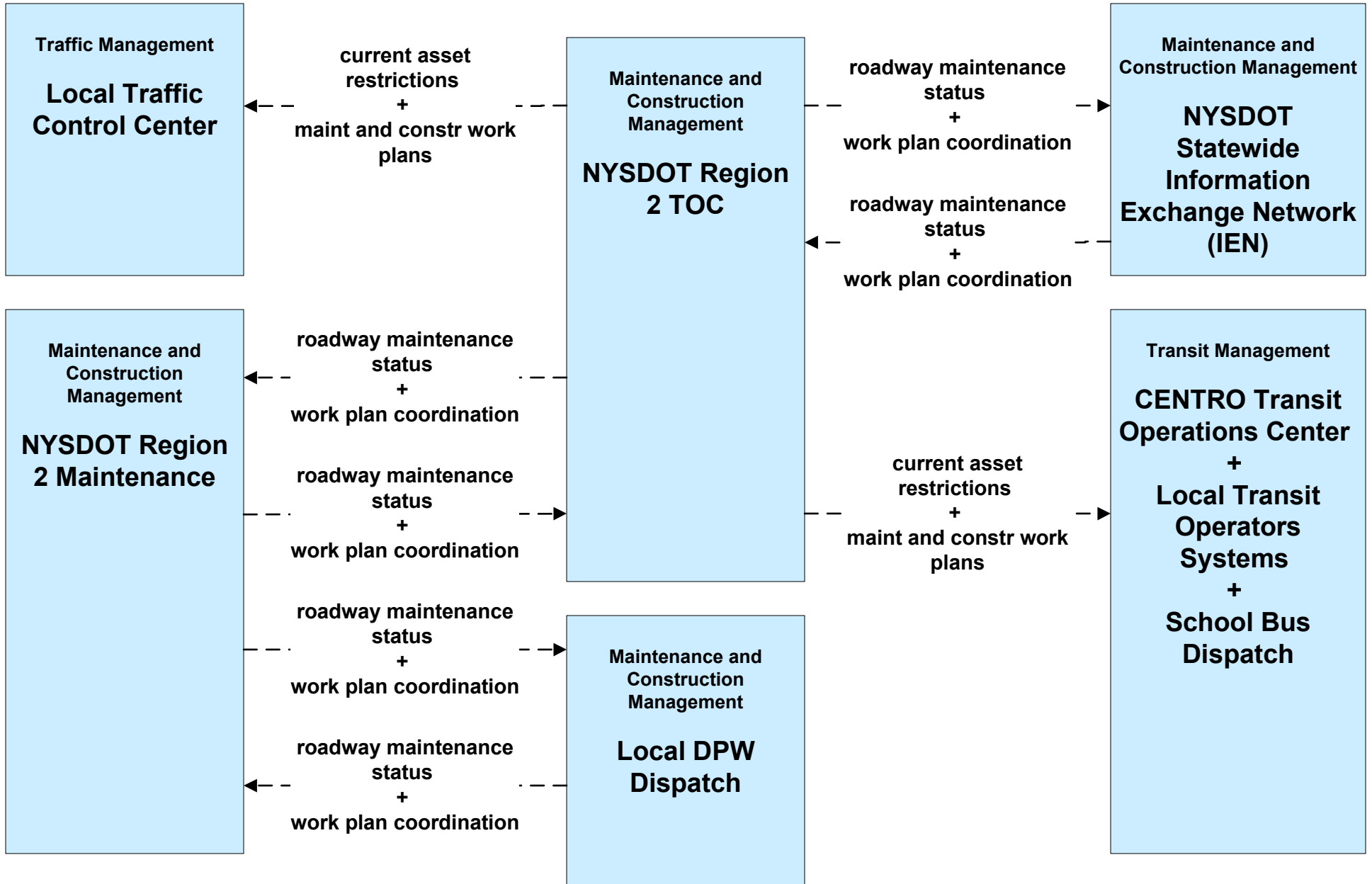
**MC08 - Workzone Management
NYSDOT Region 2 (2 of 3)**



MC08 - Workzone Management Local Cities and Counties



**MC10 – Maintenance and Construction Activity Coordination
 NYSDOT Region 2 (1 of 2)**



**MC10 – Maintenance and Construction Activity Coordination
Local Cities and Counties**

