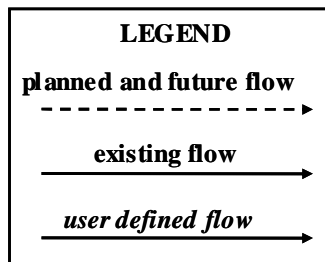
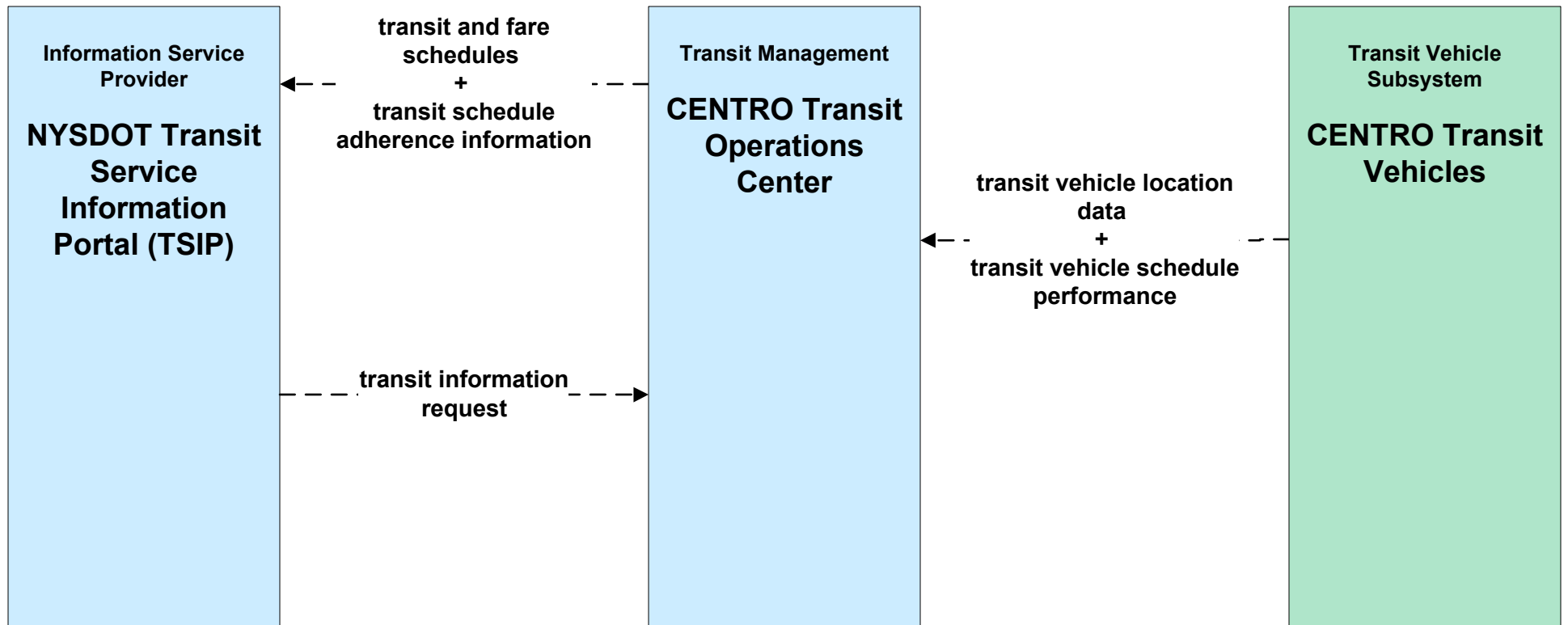


New York Mohawk Valley Regional ITS Architecture

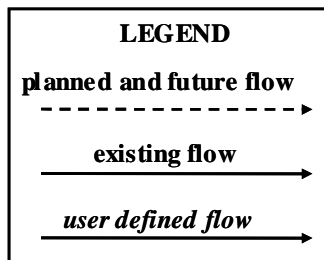
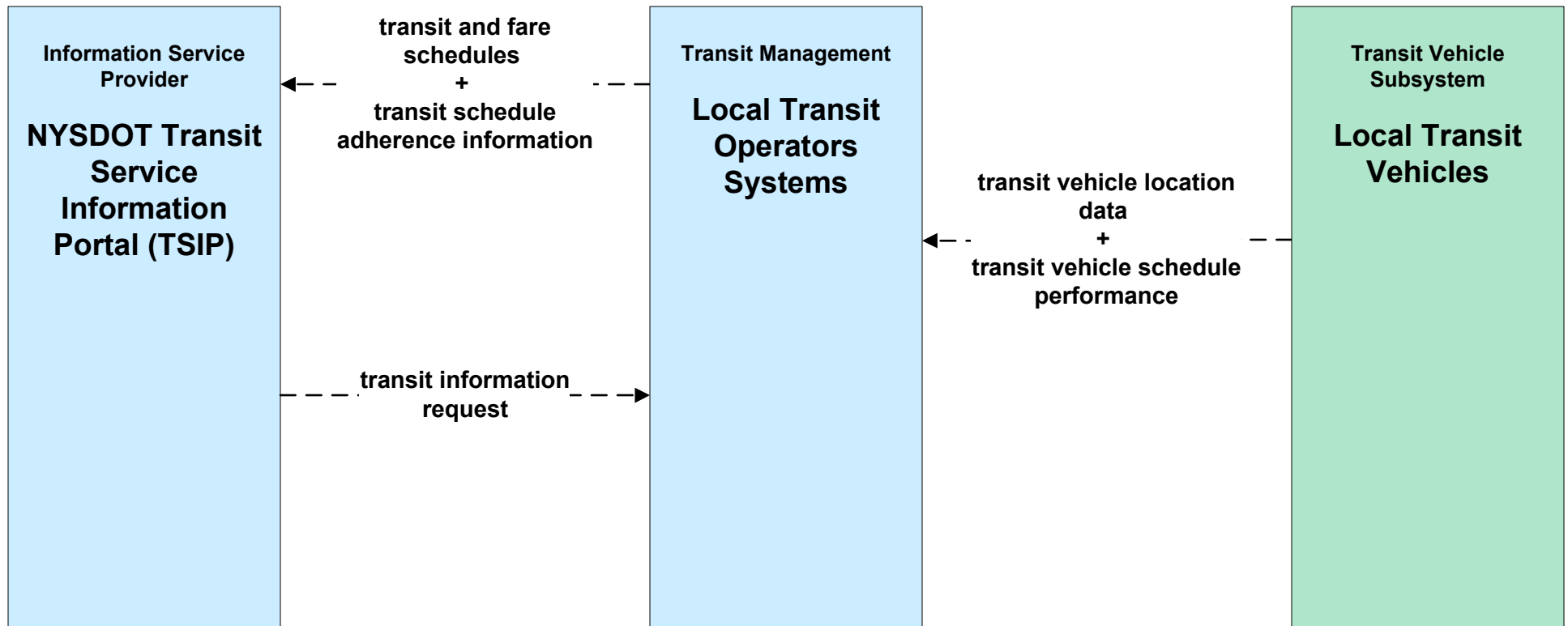
Customized Market Package Diagrams

**Advanced Public Transportation Systems
(APTS)**

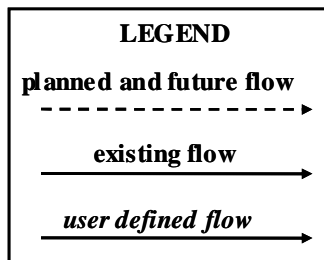
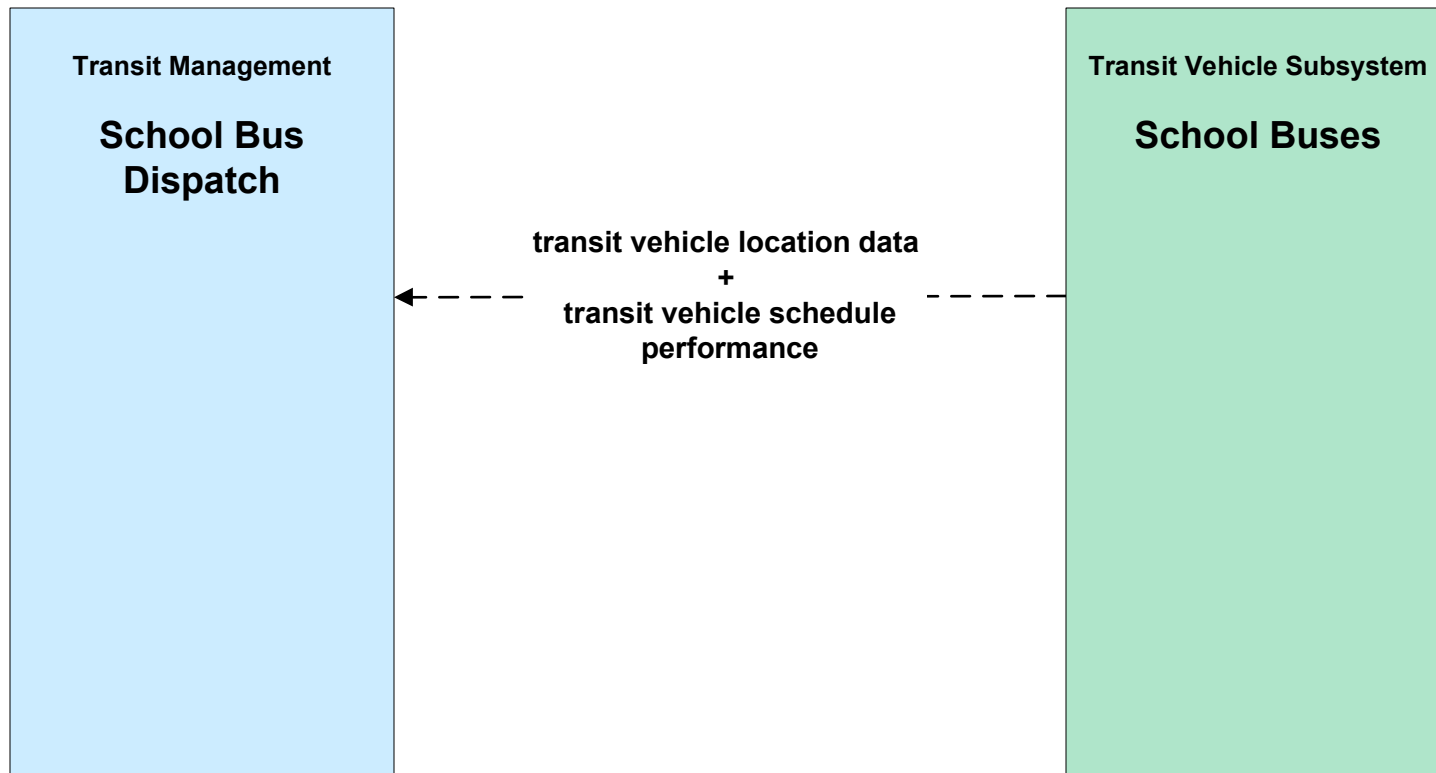
APTS01 - Transit Vehicle Tracking CENTRO



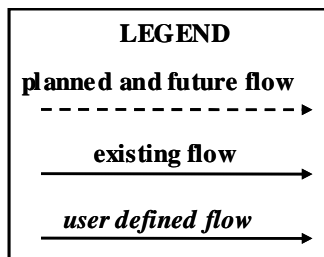
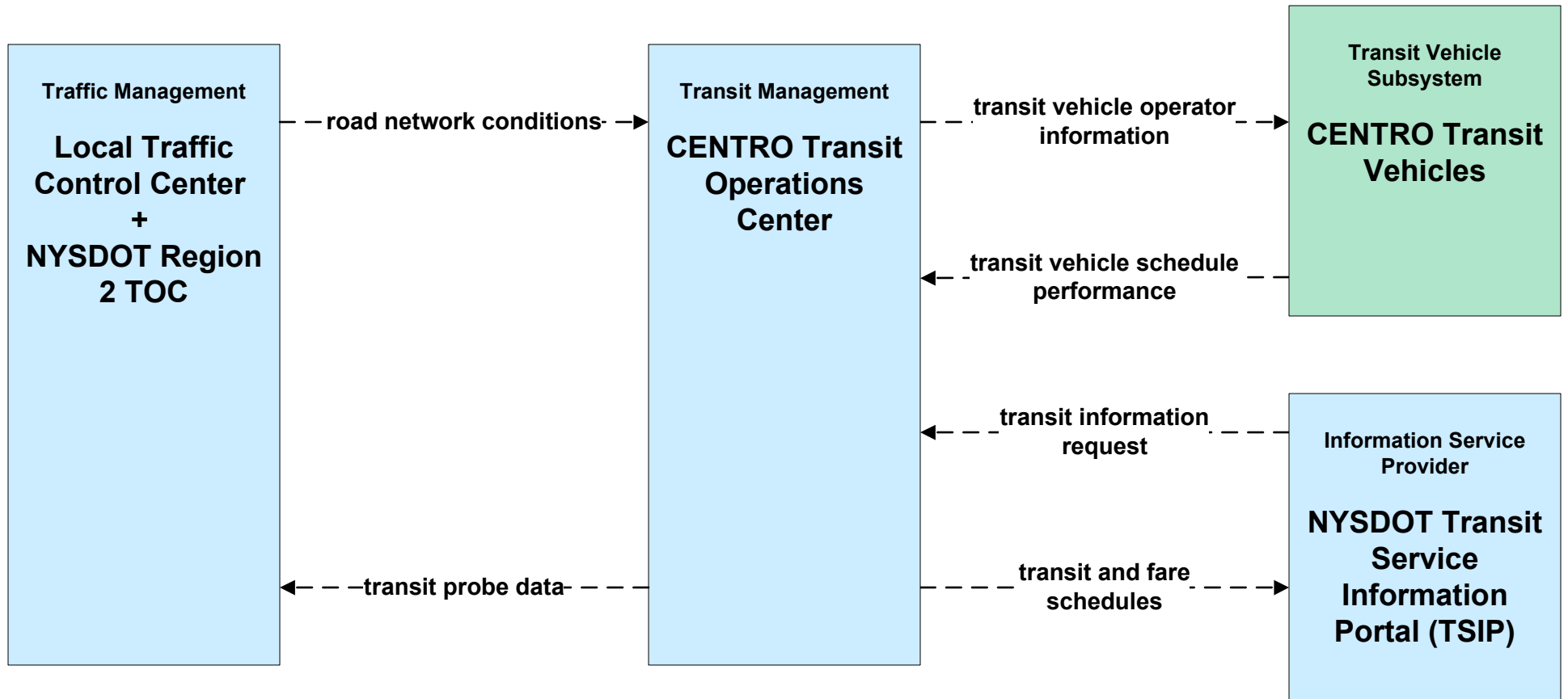
APTS01 - Transit Vehicle Tracking Local Transit Operators



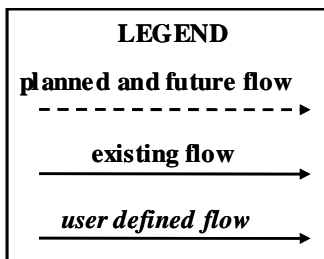
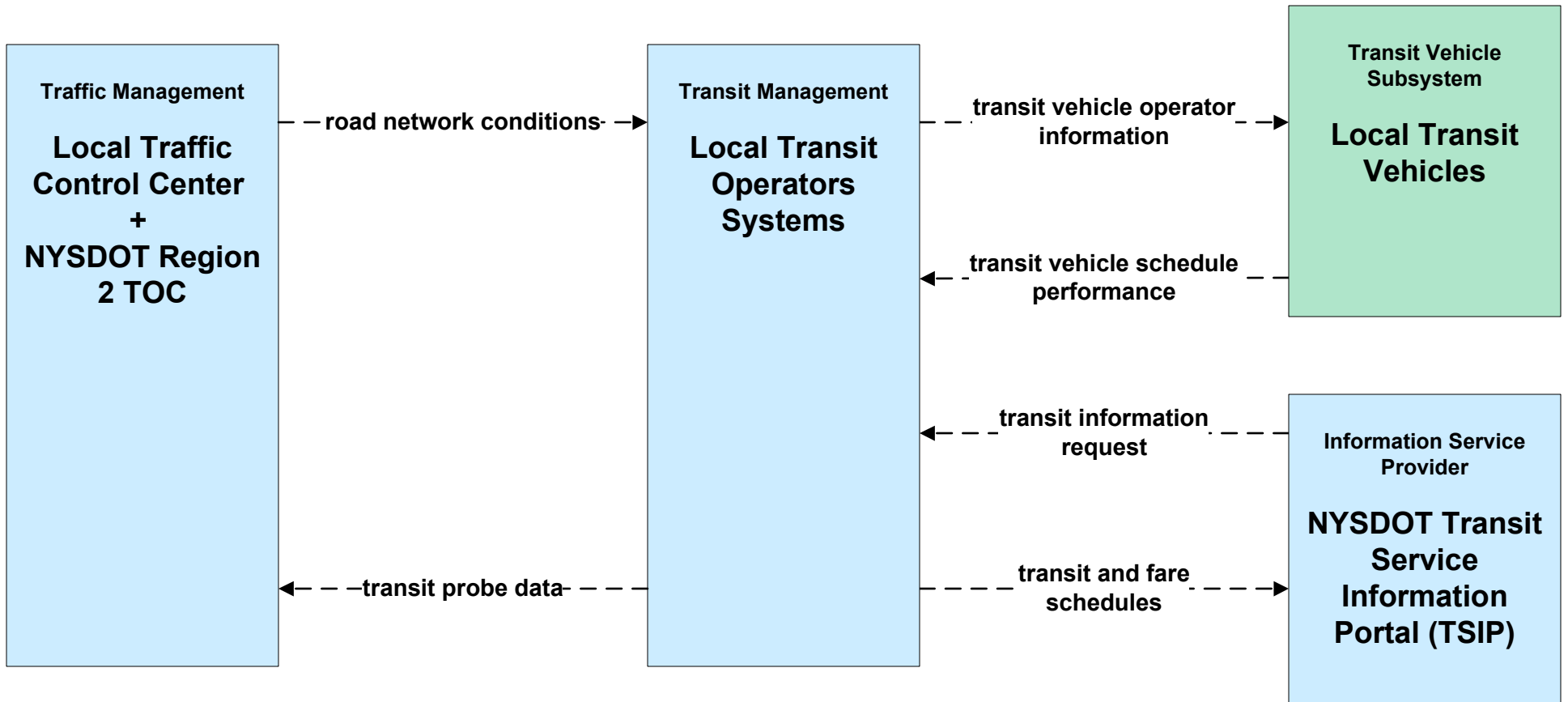
APTS01 - Transit Vehicle Tracking School Bus Operators



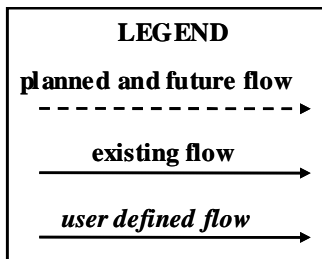
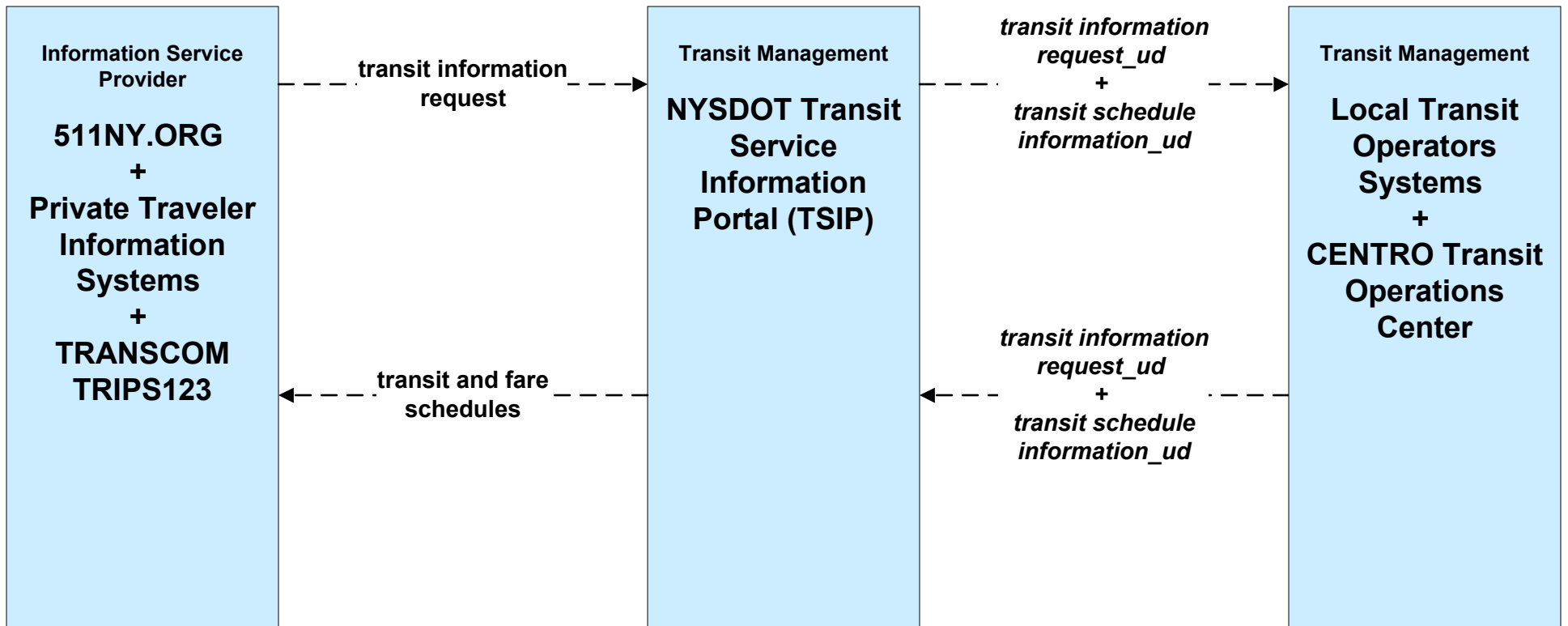
APTS02 - Transit Fixed-Route Operations CENTRO



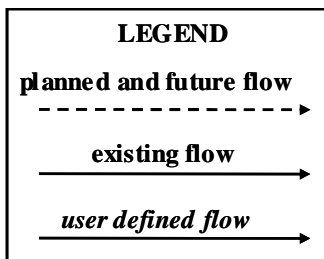
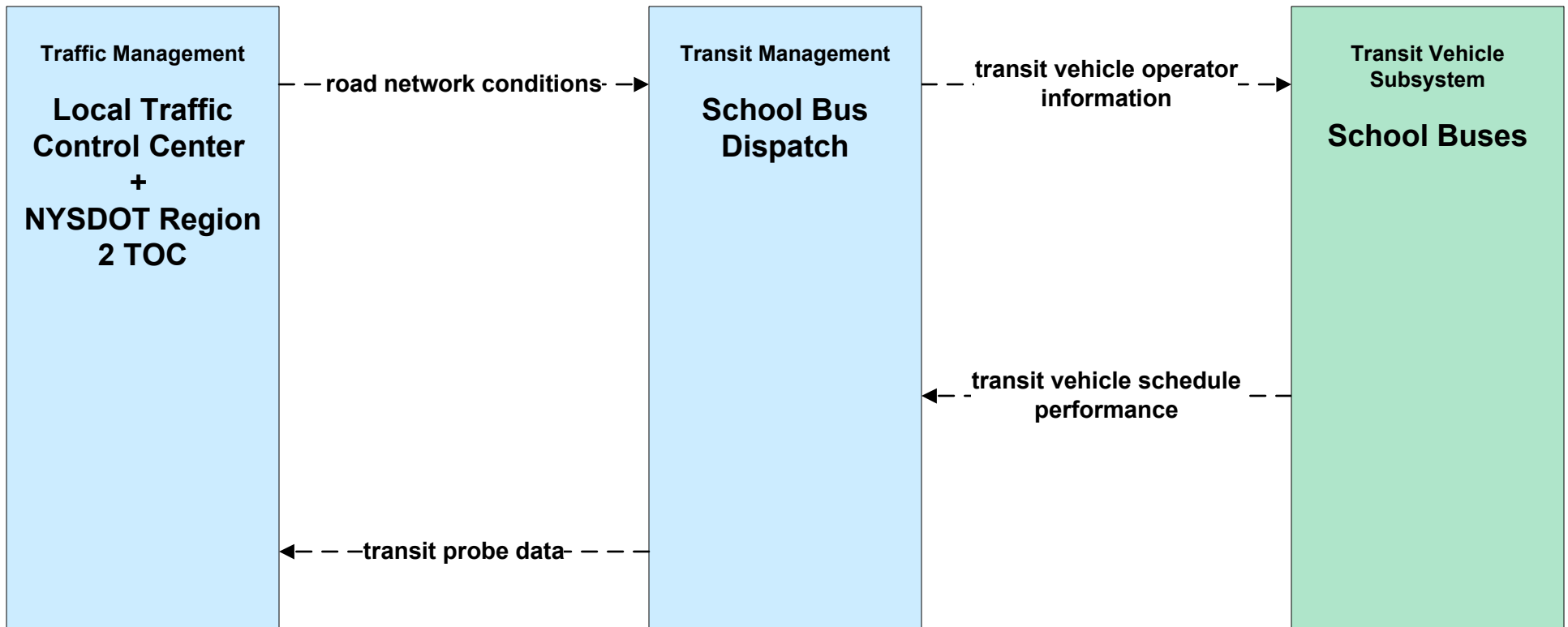
APTS02 - Transit Fixed-Route Operations Local Transit Operators



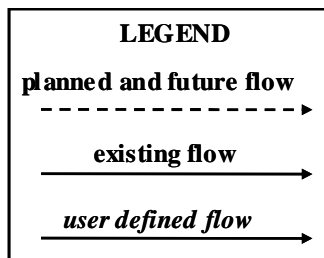
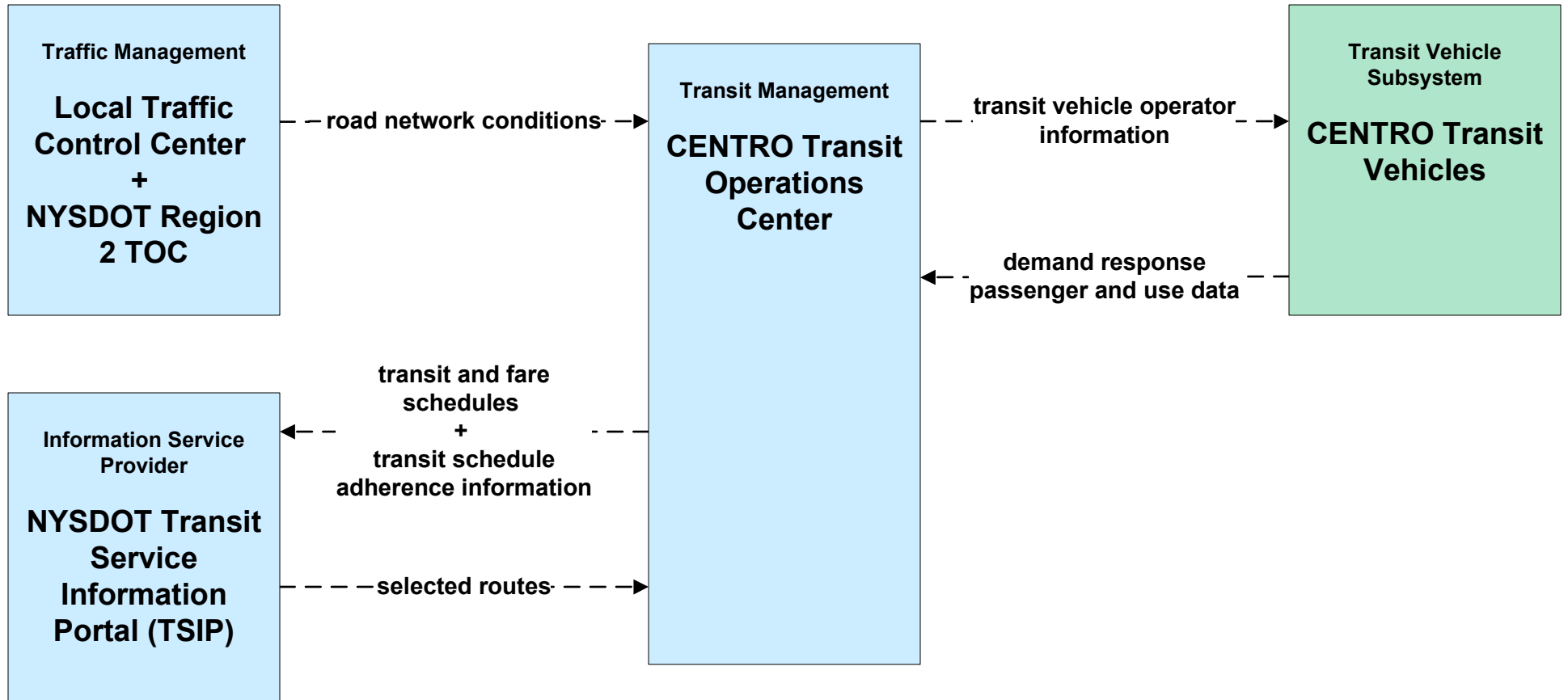
APTS02 - Transit Fixed-Route Operations NYSDOT TSIP



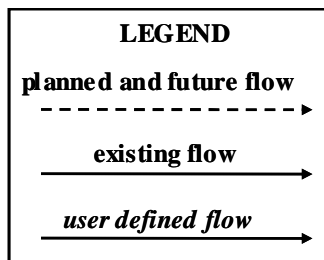
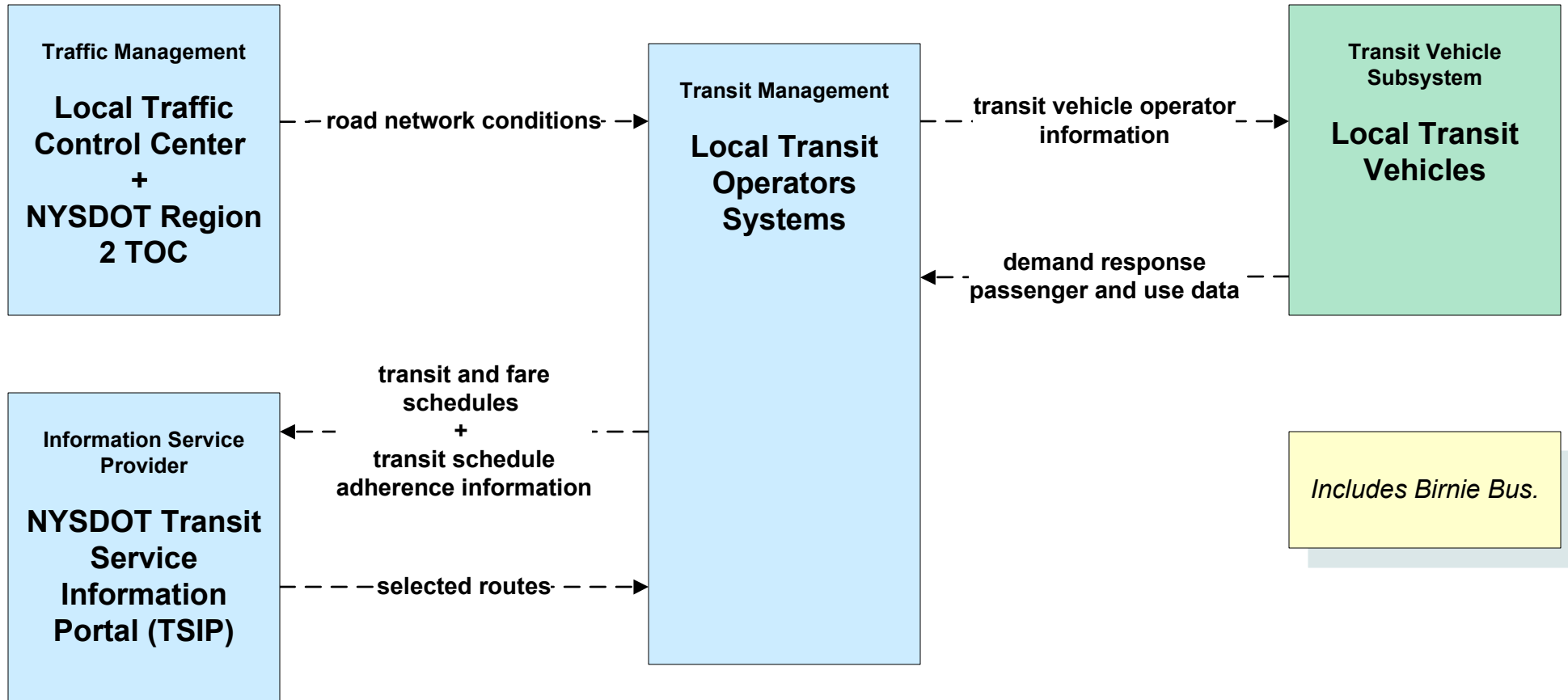
APTS02 - Transit Fixed-Route Operations School Bus Operators



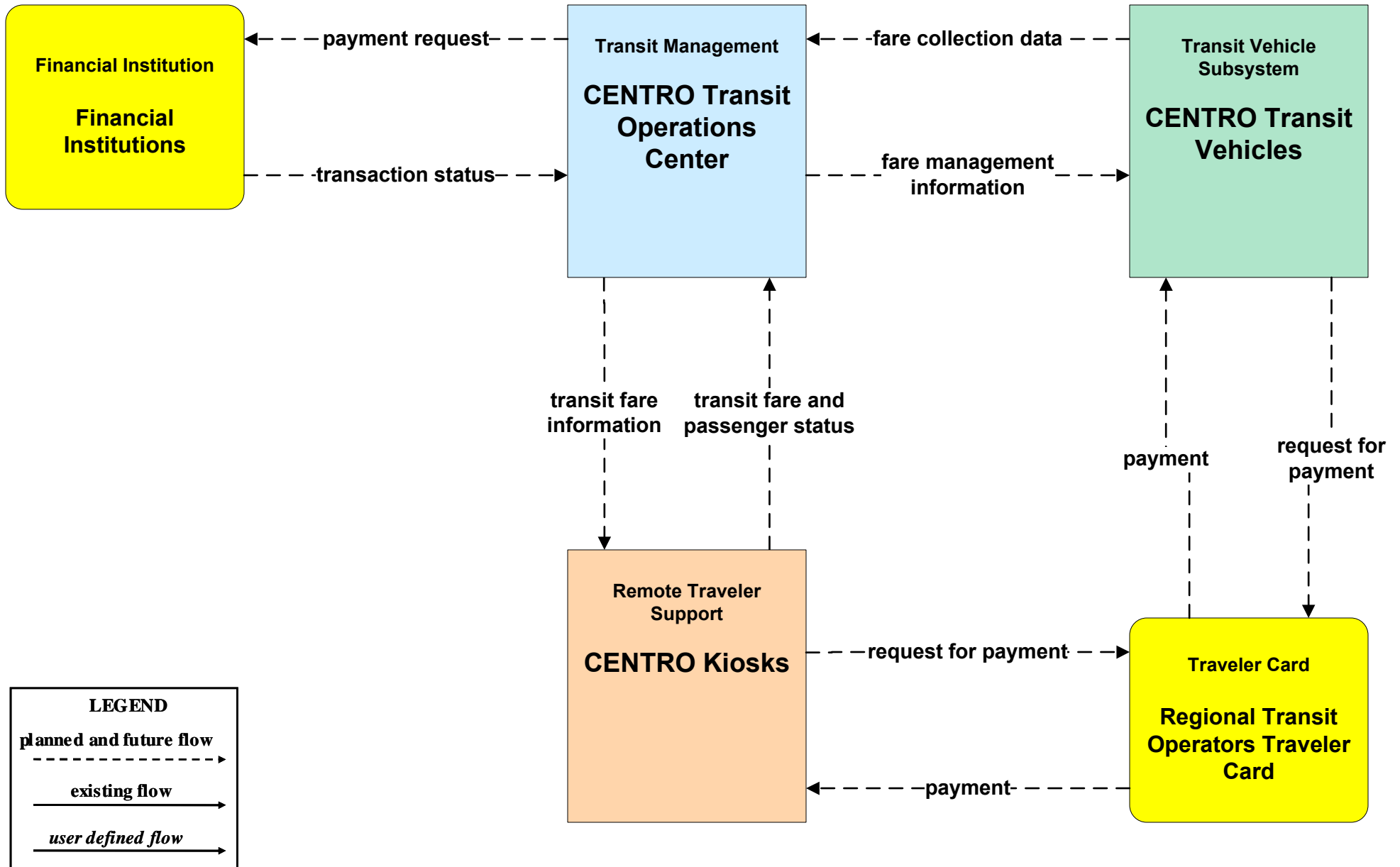
APTS03 - Demand Response Transit Operations CENTRO



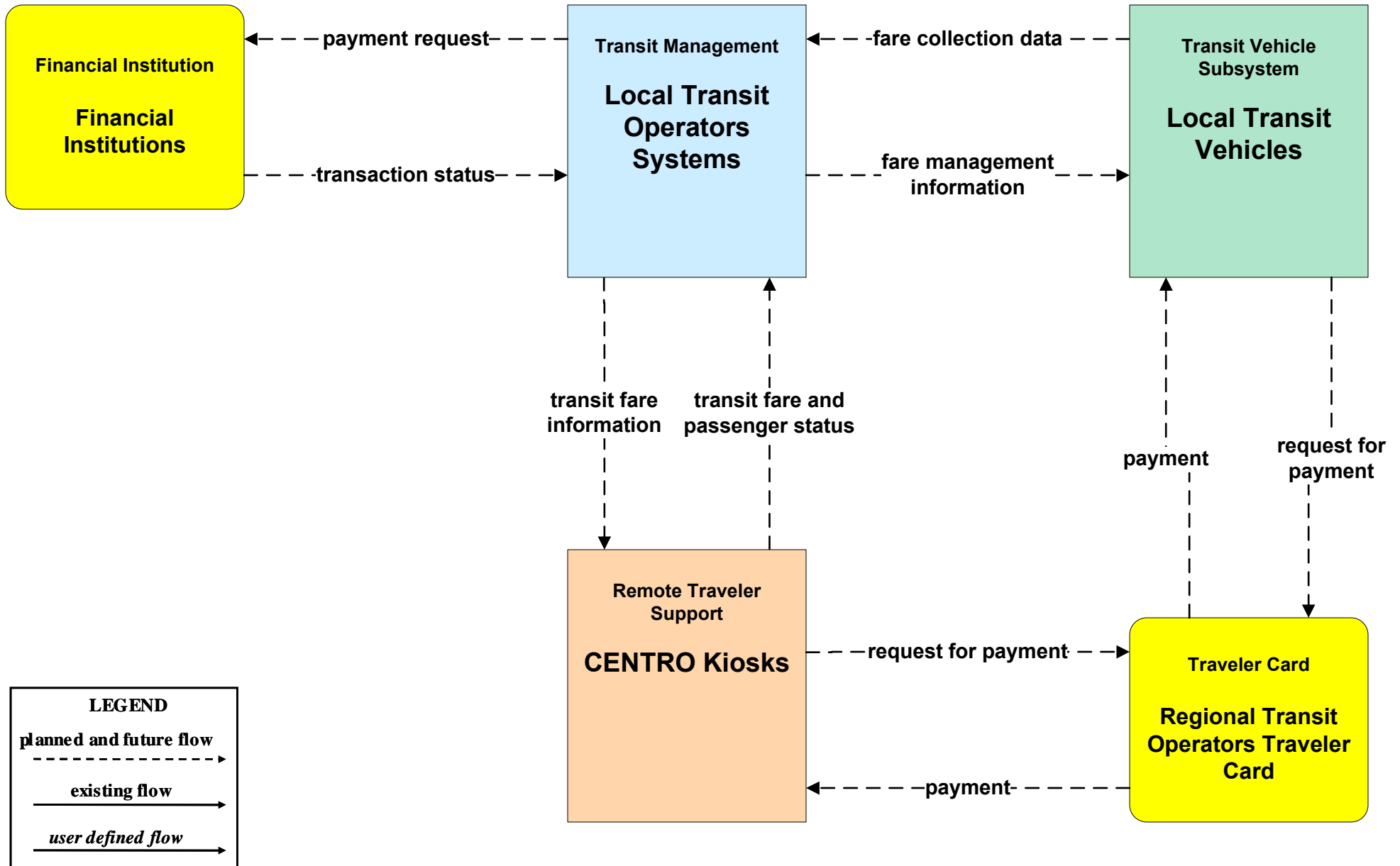
APTS03 - Demand Response Transit Operations Local Transit Operators



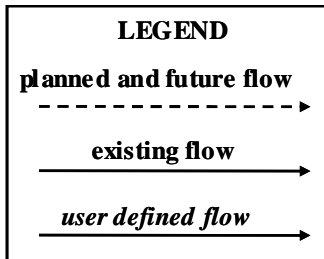
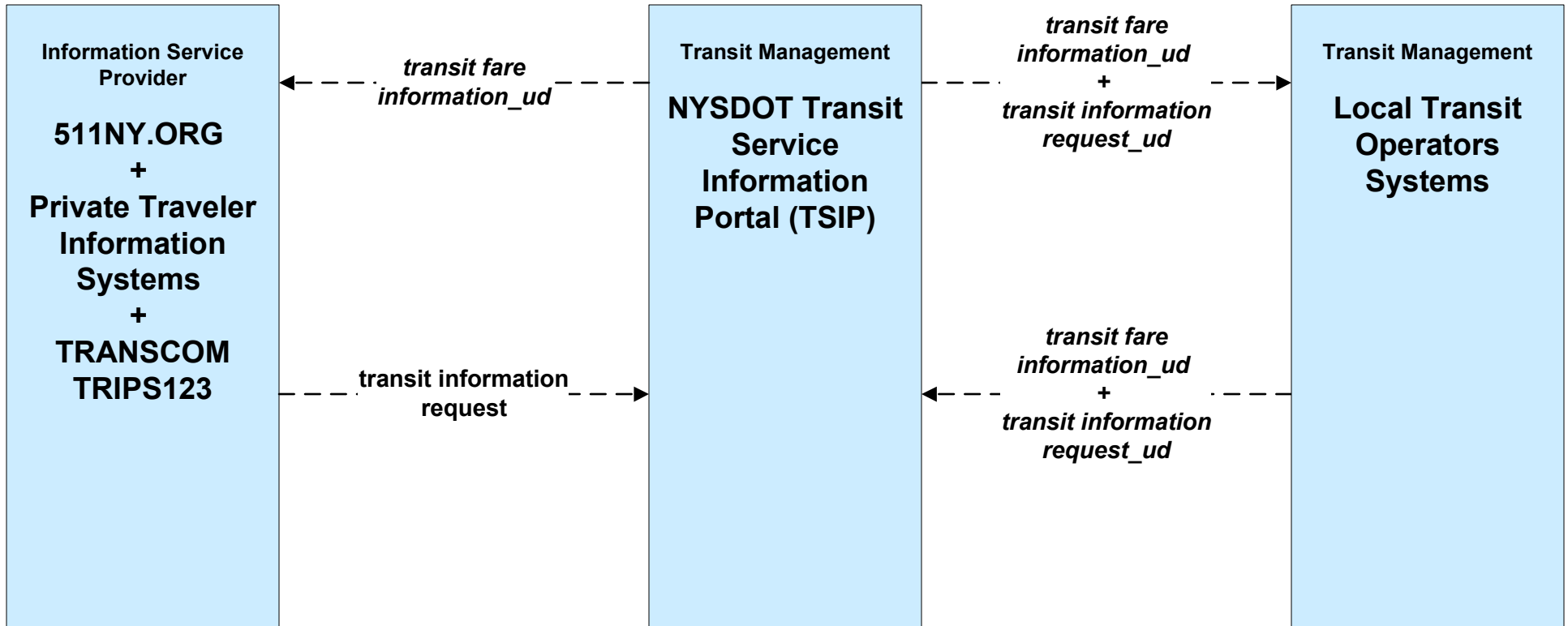
APTS04 - Transit Passenger and Fare Management CENTRO



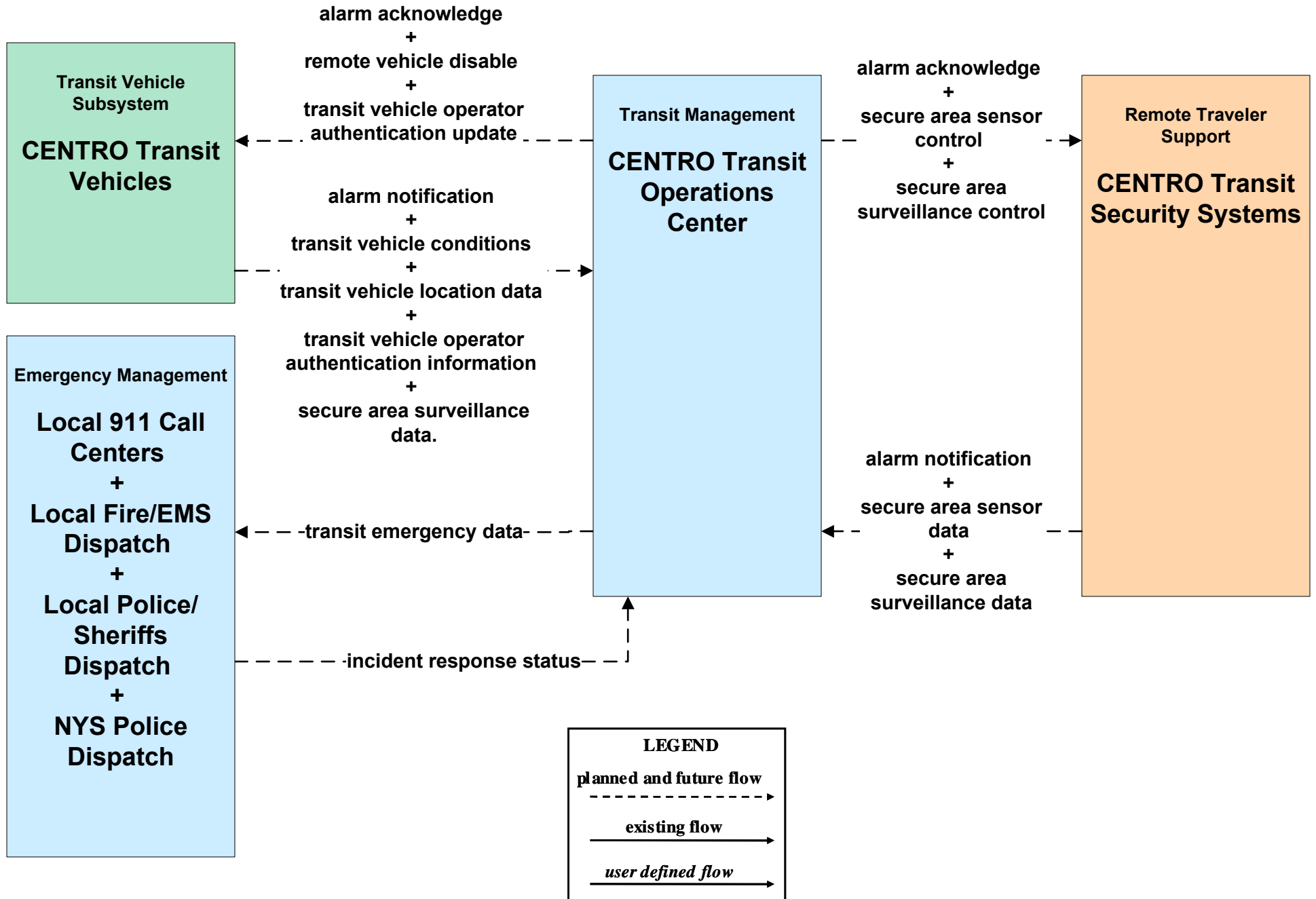
APTS04 - Transit Passenger and Fare Management Local Transit Operators



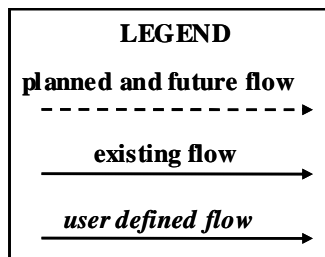
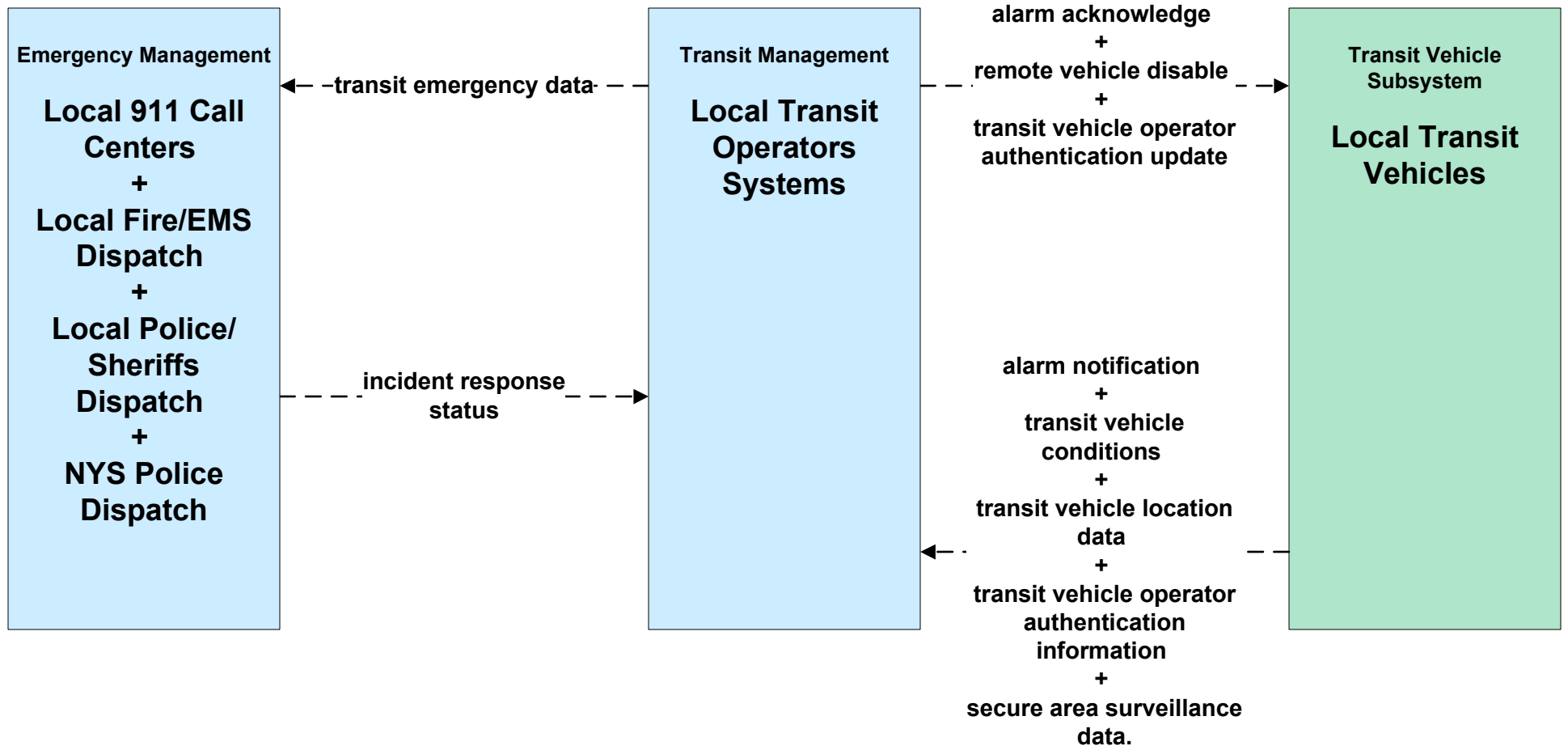
APTS04 - Transit Fare Collection Management NYSDOT TSIP



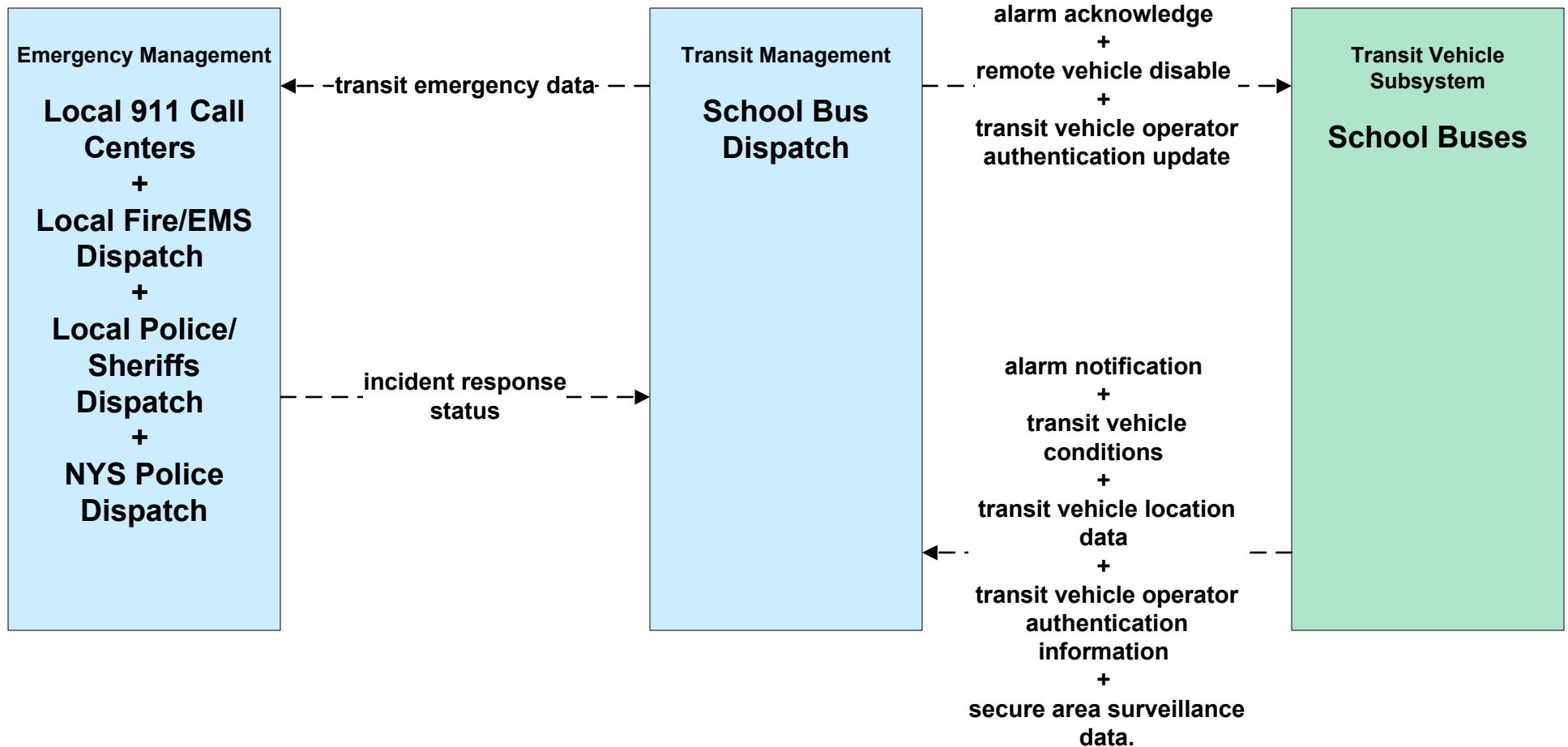
APTS05 - Transit Security CENTRO



APTS05 - Transit Security Local Transit Operators

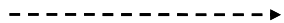


APTS05 - Transit Security School Bus Operators



LEGEND

planned and future flow



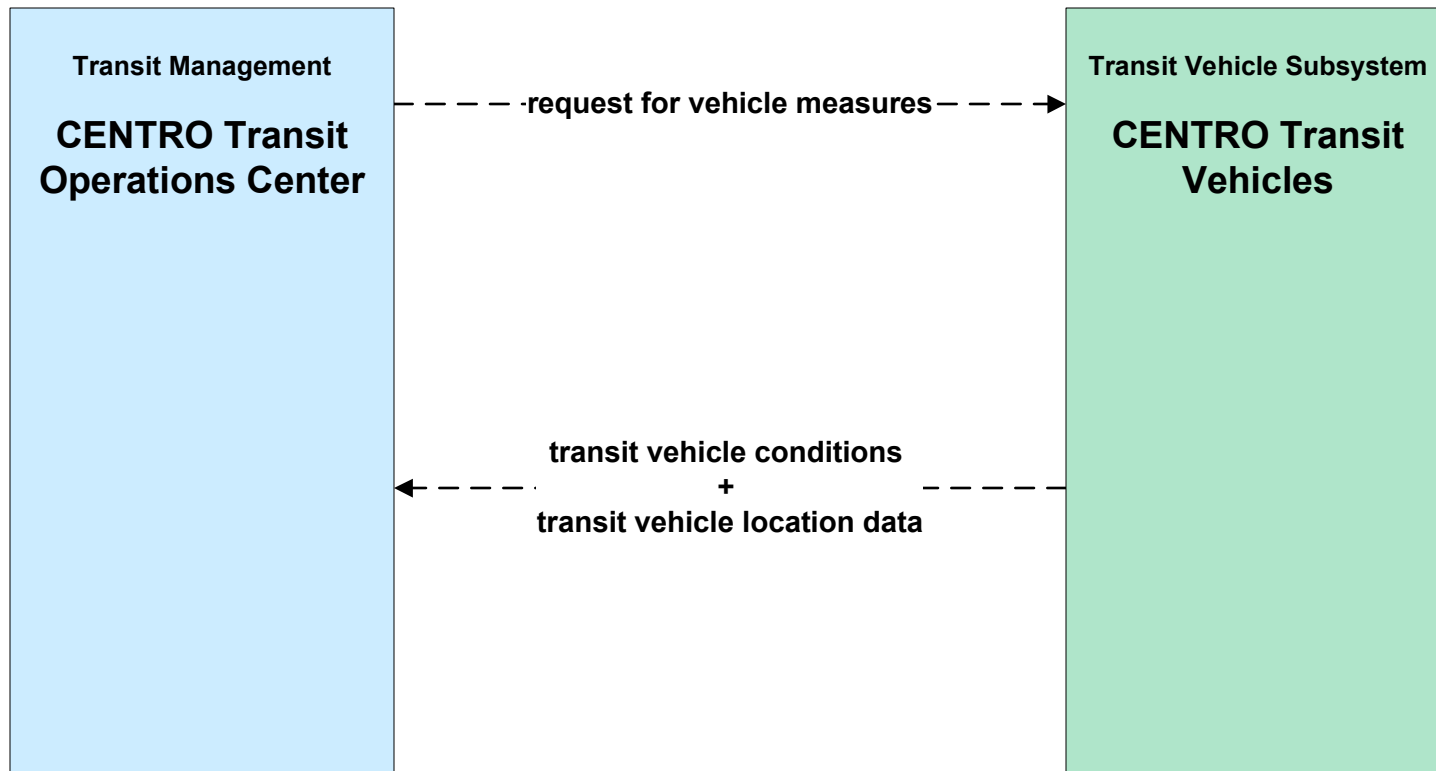
existing flow



user defined flow

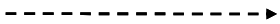


APTS06 - Transit Maintenance CENTRO

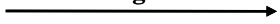


LEGEND

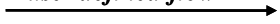
planned and future flow



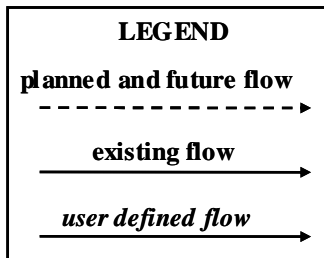
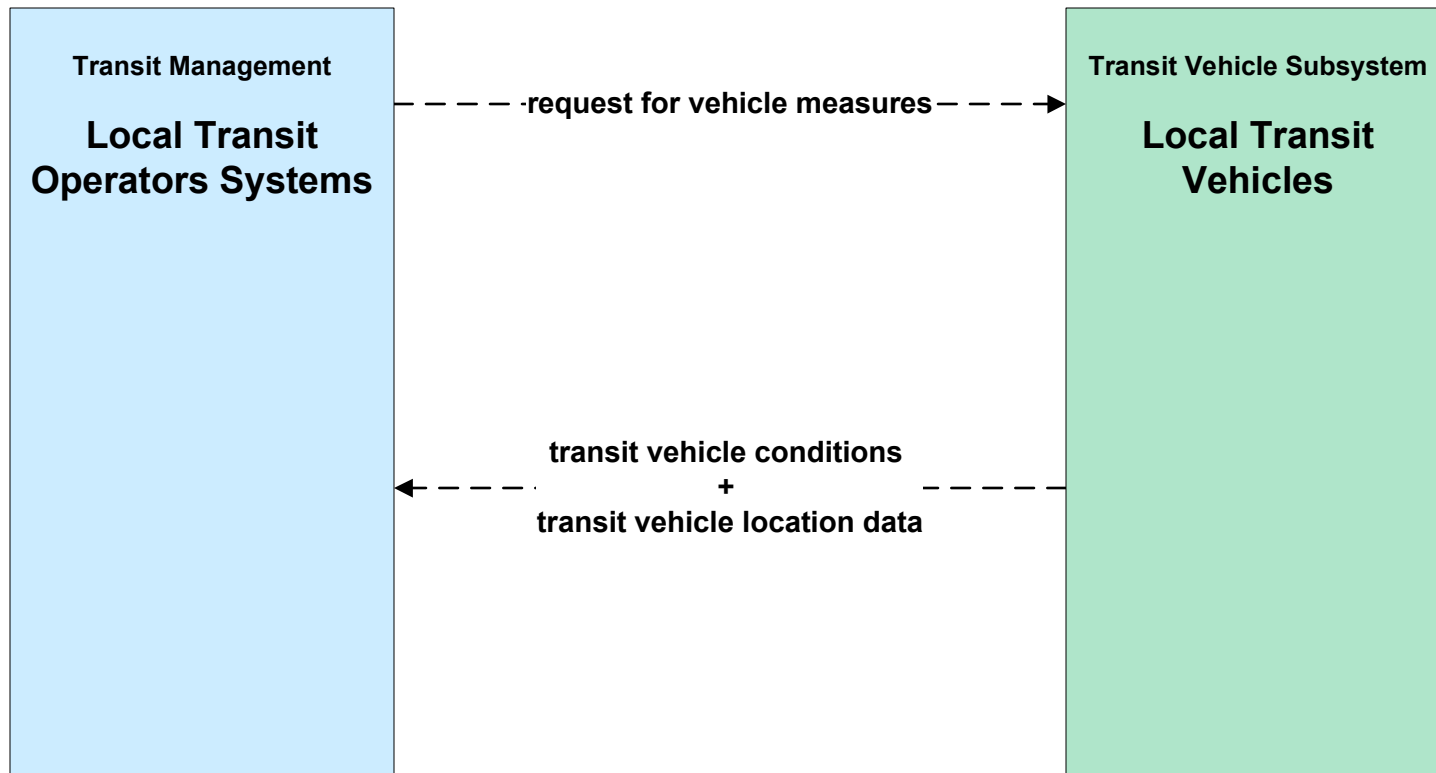
existing flow



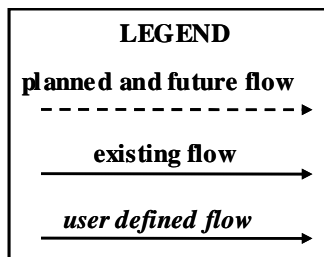
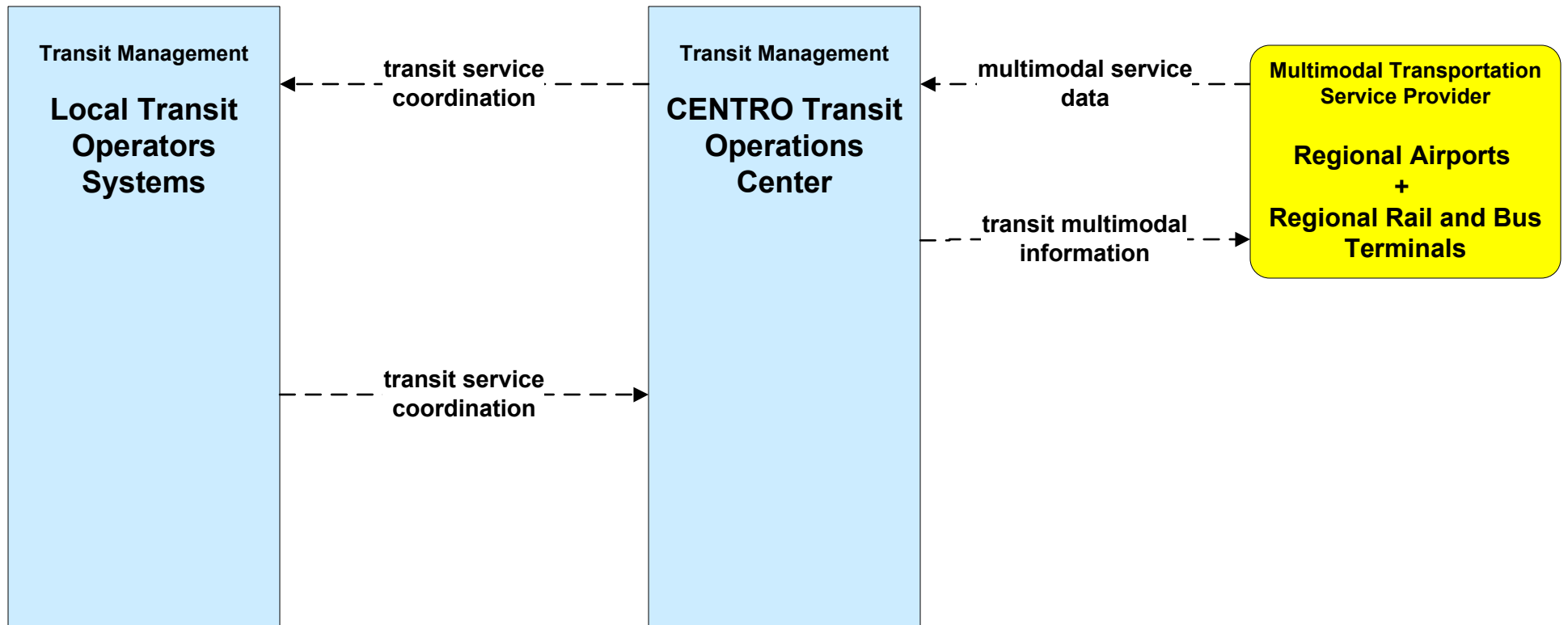
user defined flow



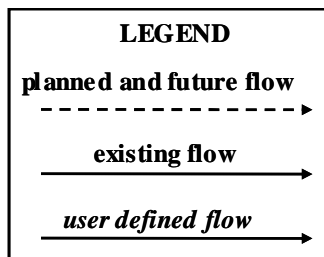
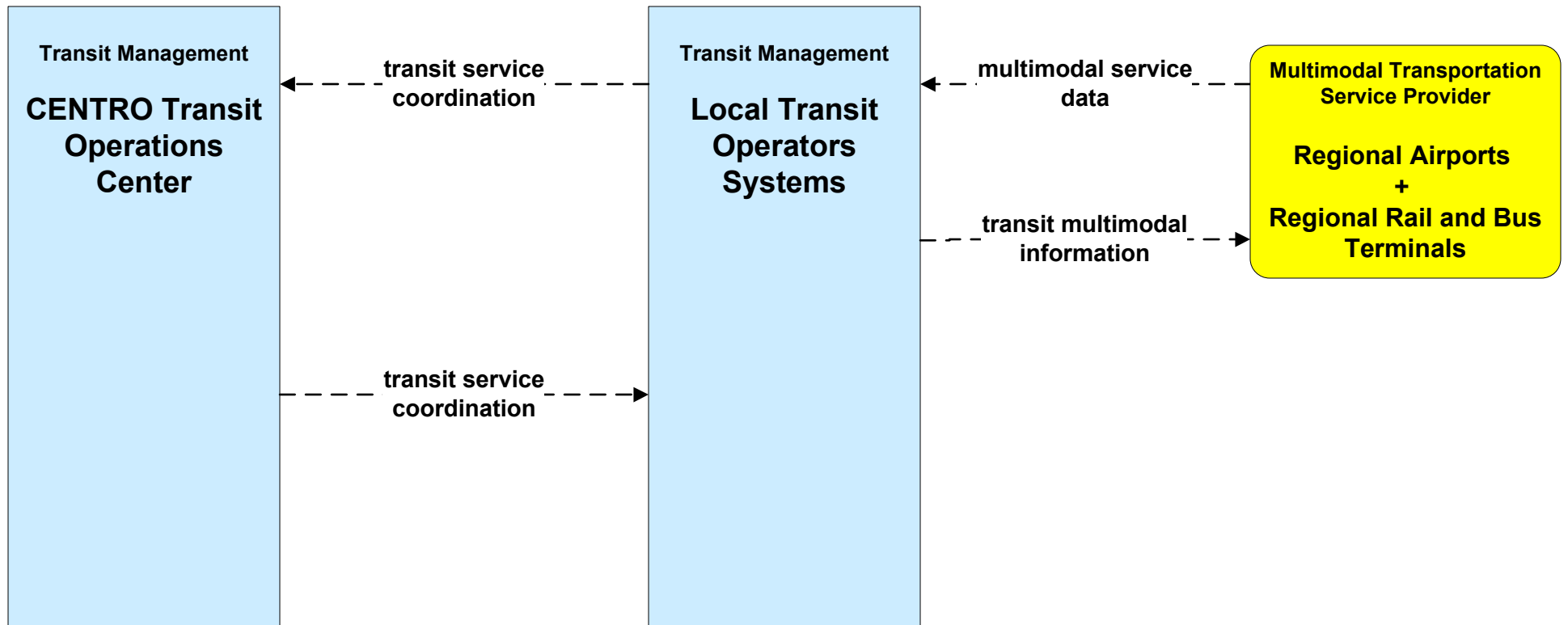
APTS06 - Transit Maintenance Local Transit Operators



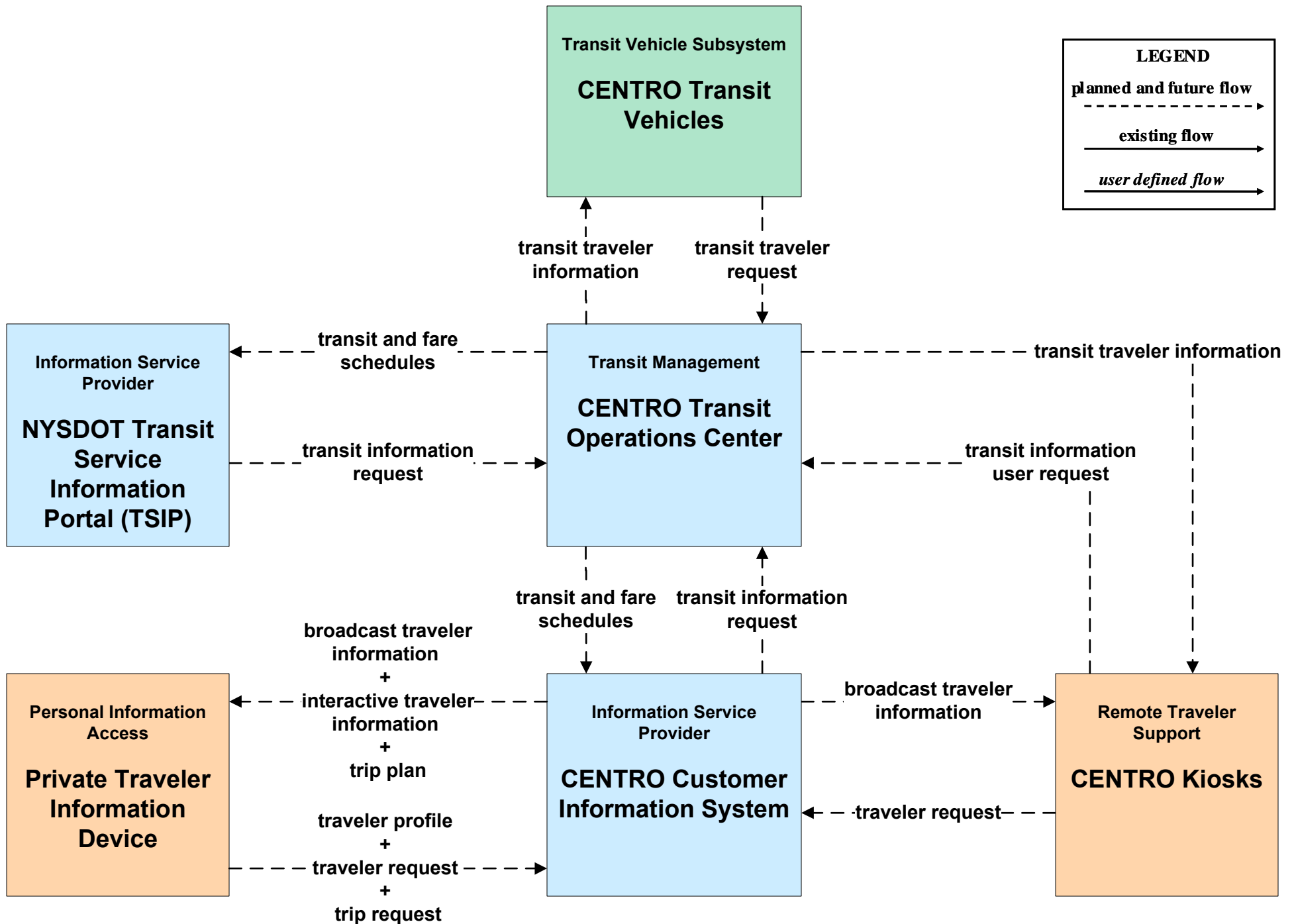
APTS07 - Multi-modal Coordination CENTRO



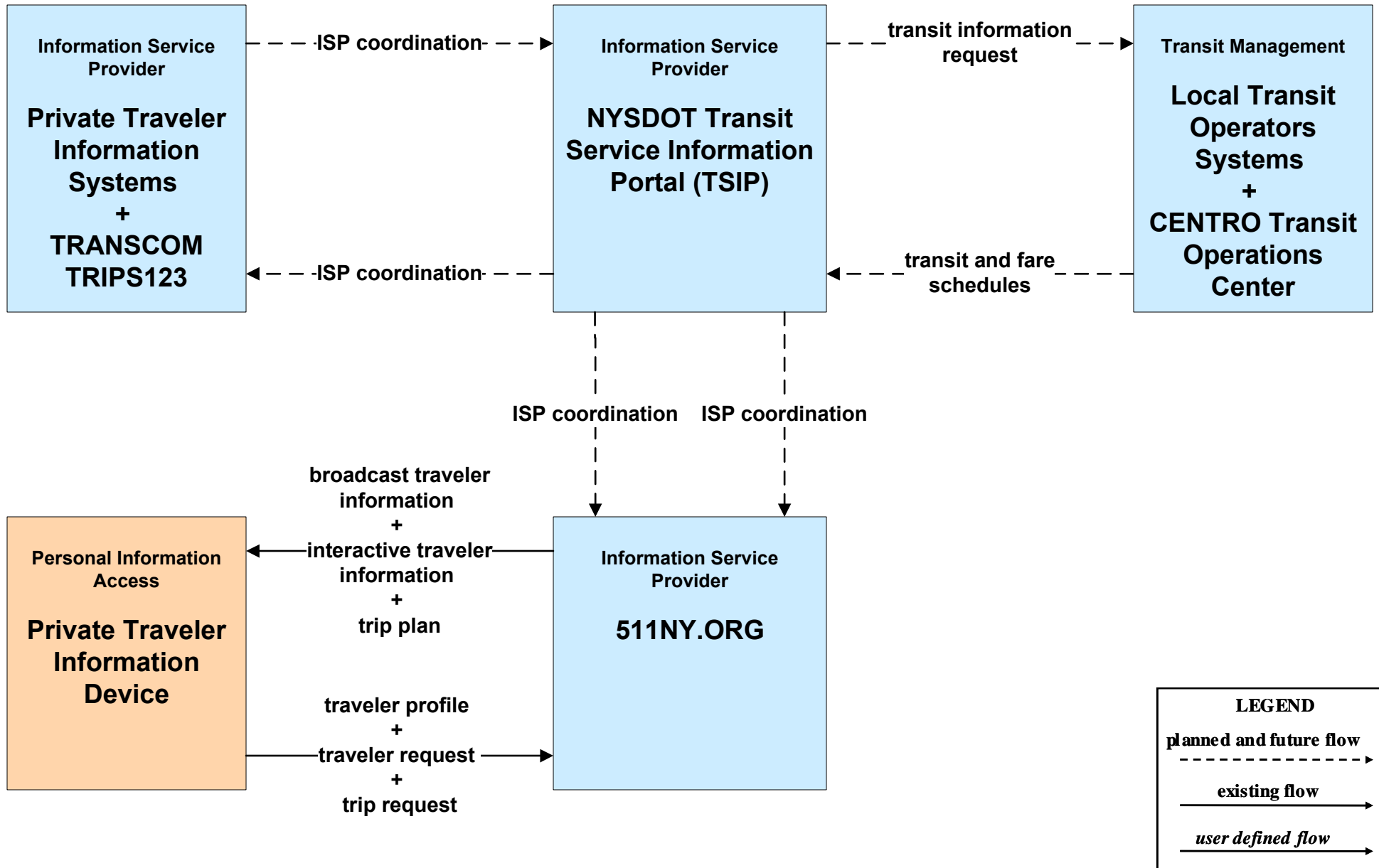
APTS07 - Multi-modal Coordination Local Transit Operators



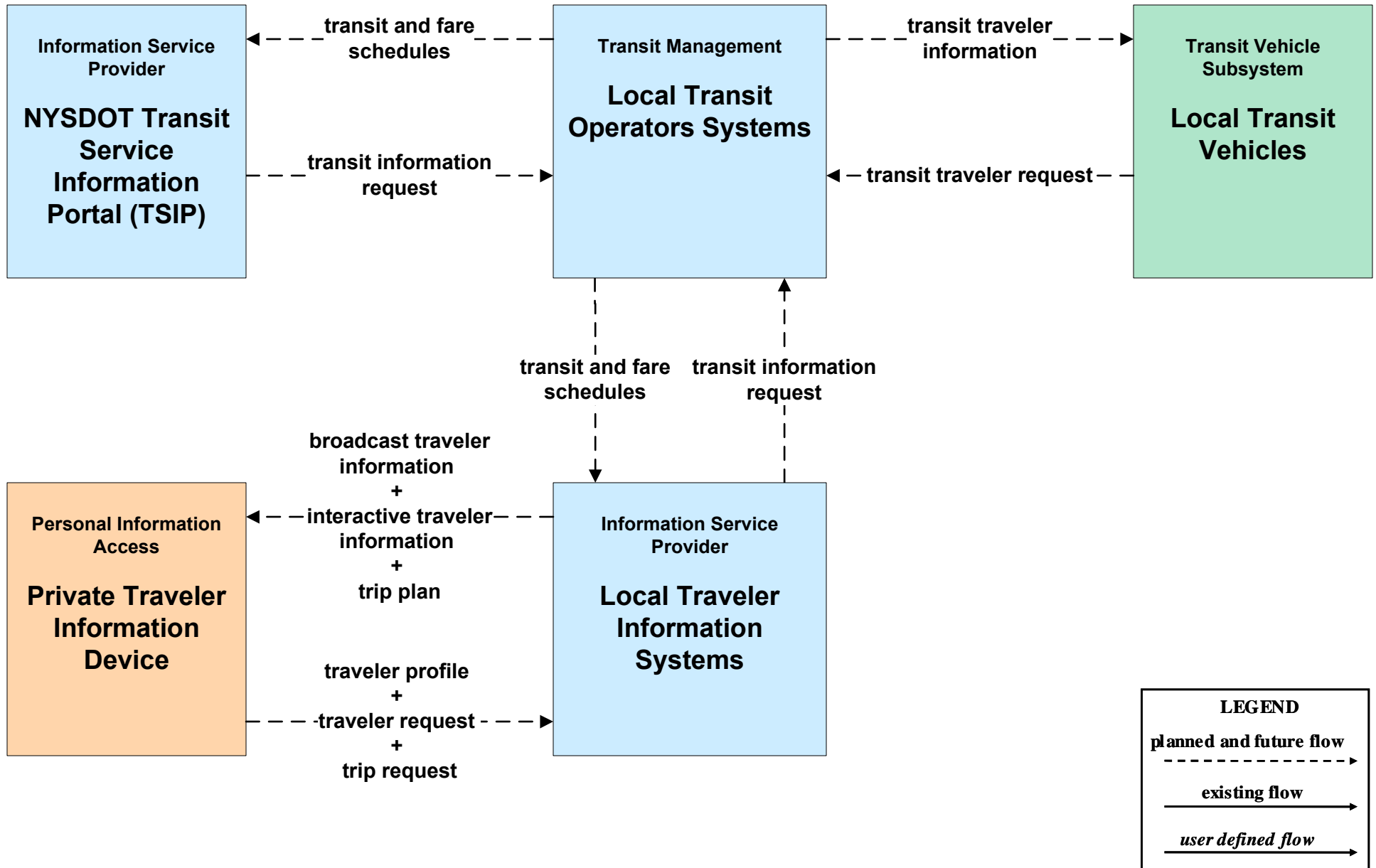
APTS08 - Transit Traveler Information CENTRO



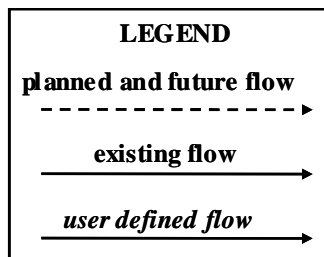
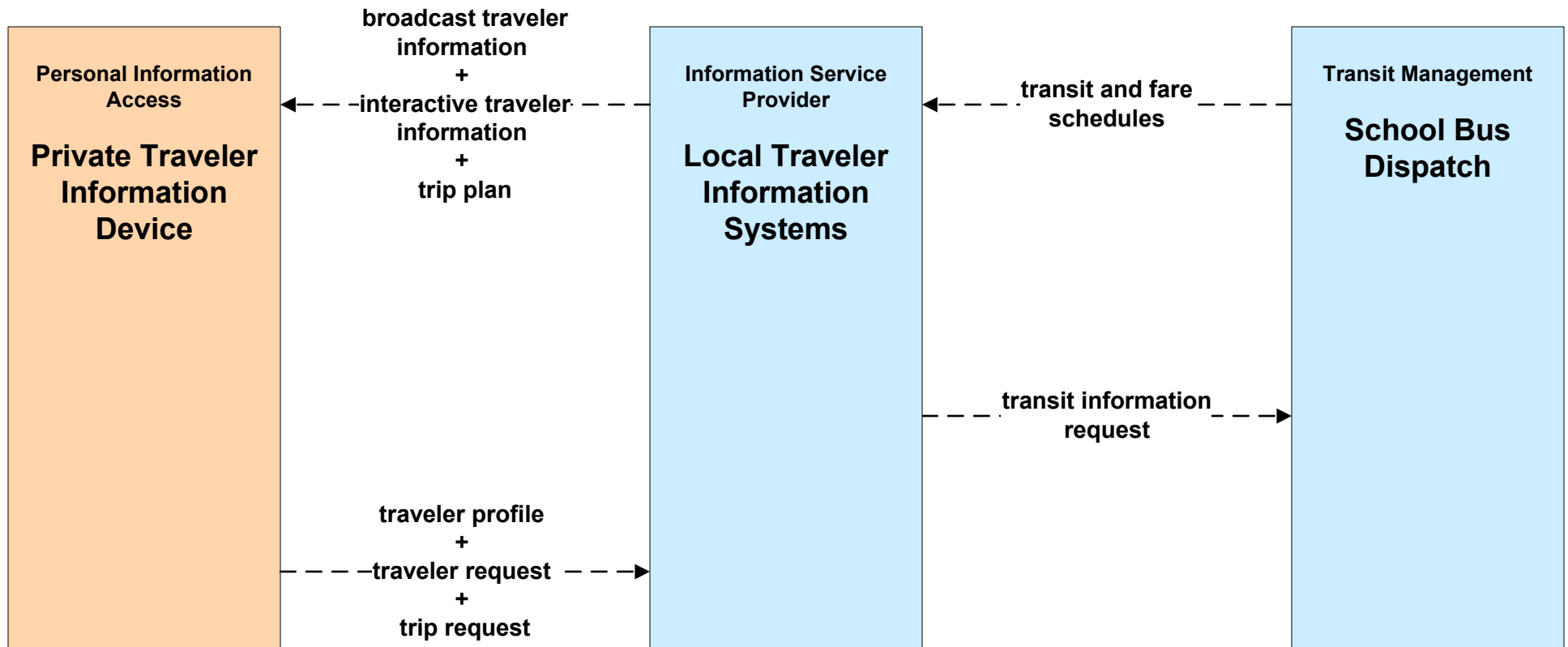
APTS08 - Transit Traveler Information NYSDOT TSIP



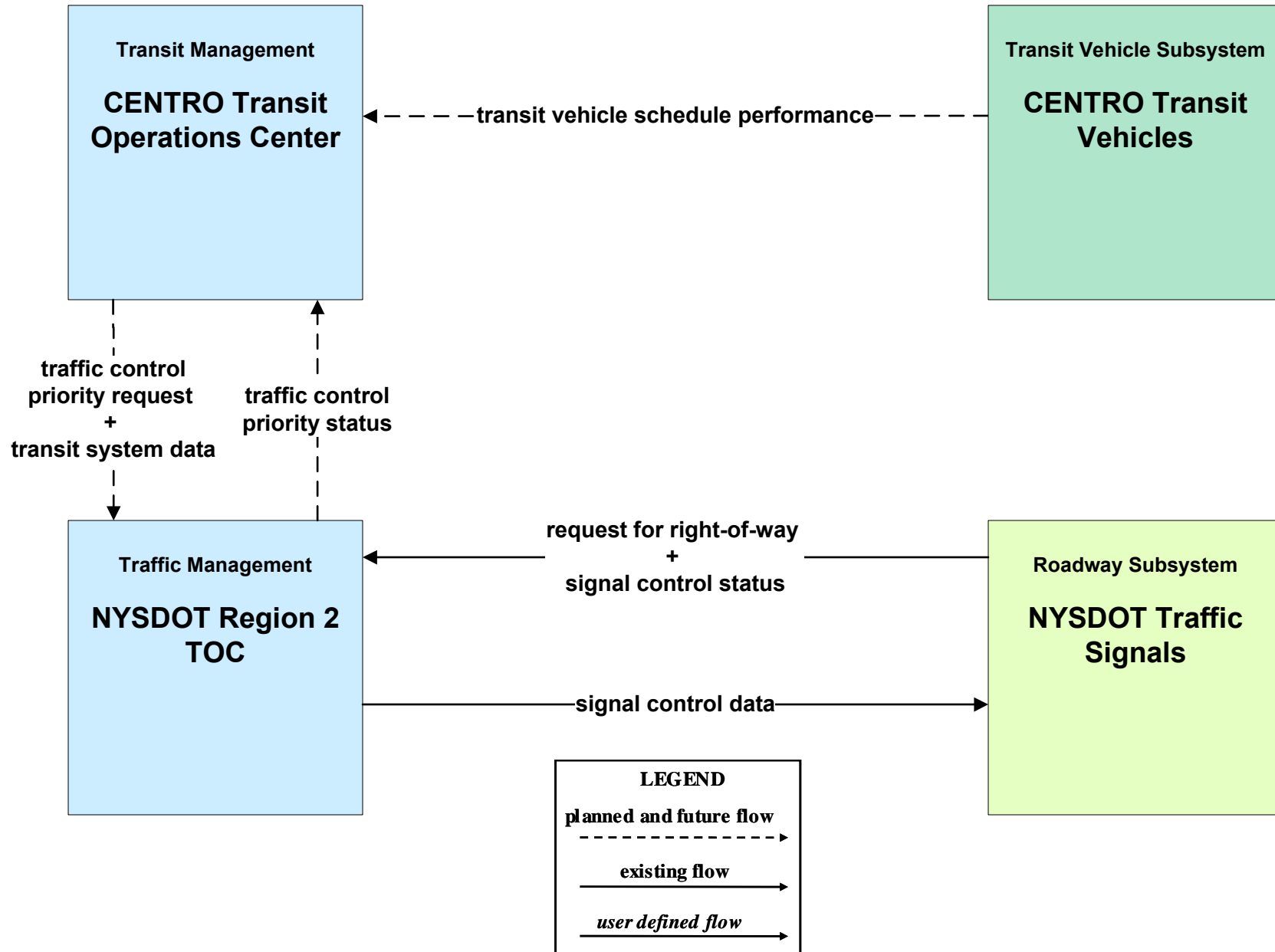
APTS08 - Transit Traveler Information Local Transit Operators



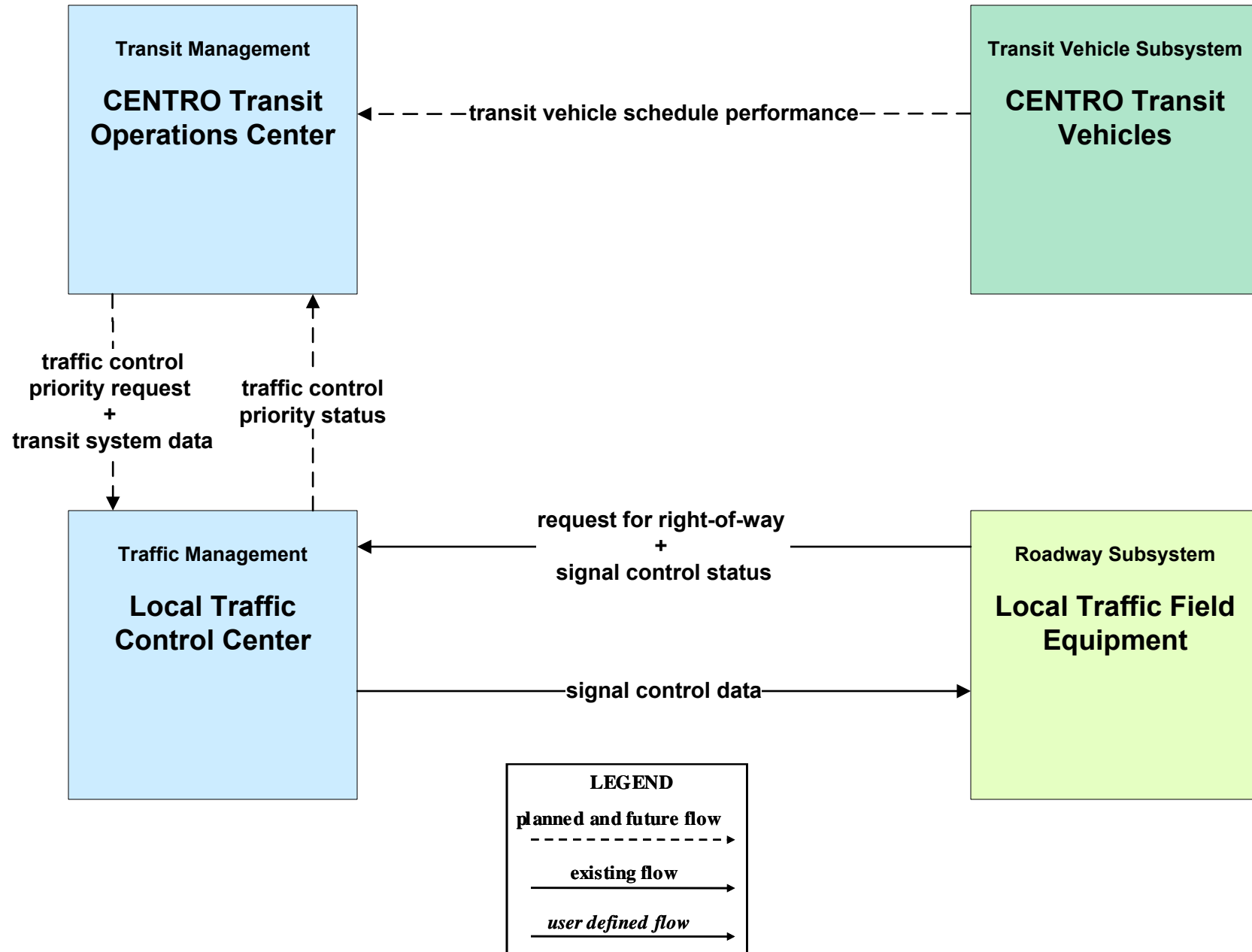
APTS08 - Transit Traveler Information School Bus Operators



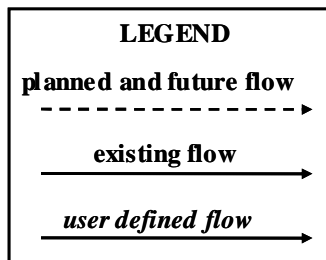
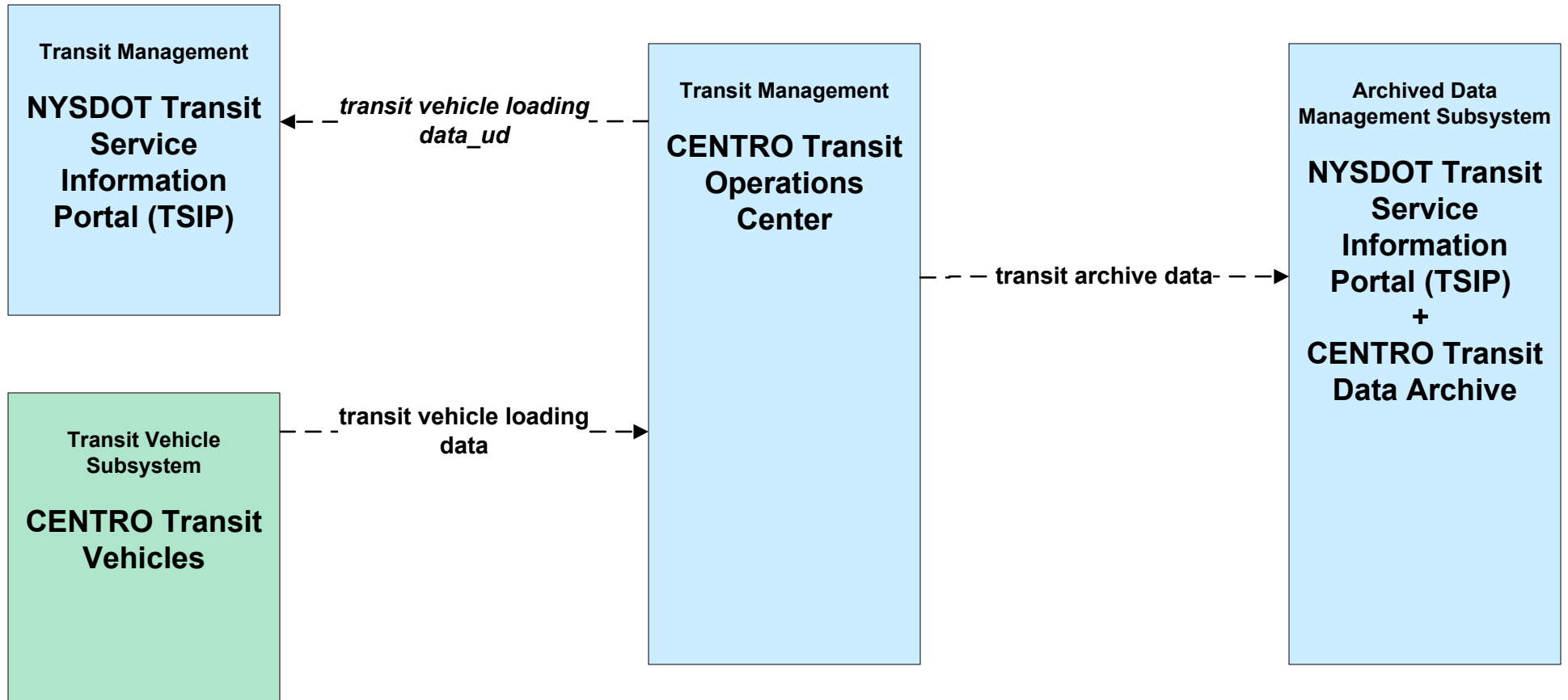
APTS09 – Transit Signal Priority CENTRO / NYSDOT Signals



APTS09 – Transit Signal Priority CENTRO / Local Signals



APTS10 - Transit Passenger Counting CENTRO



APTS10 - Transit Passenger Counting Local Transit Operators

