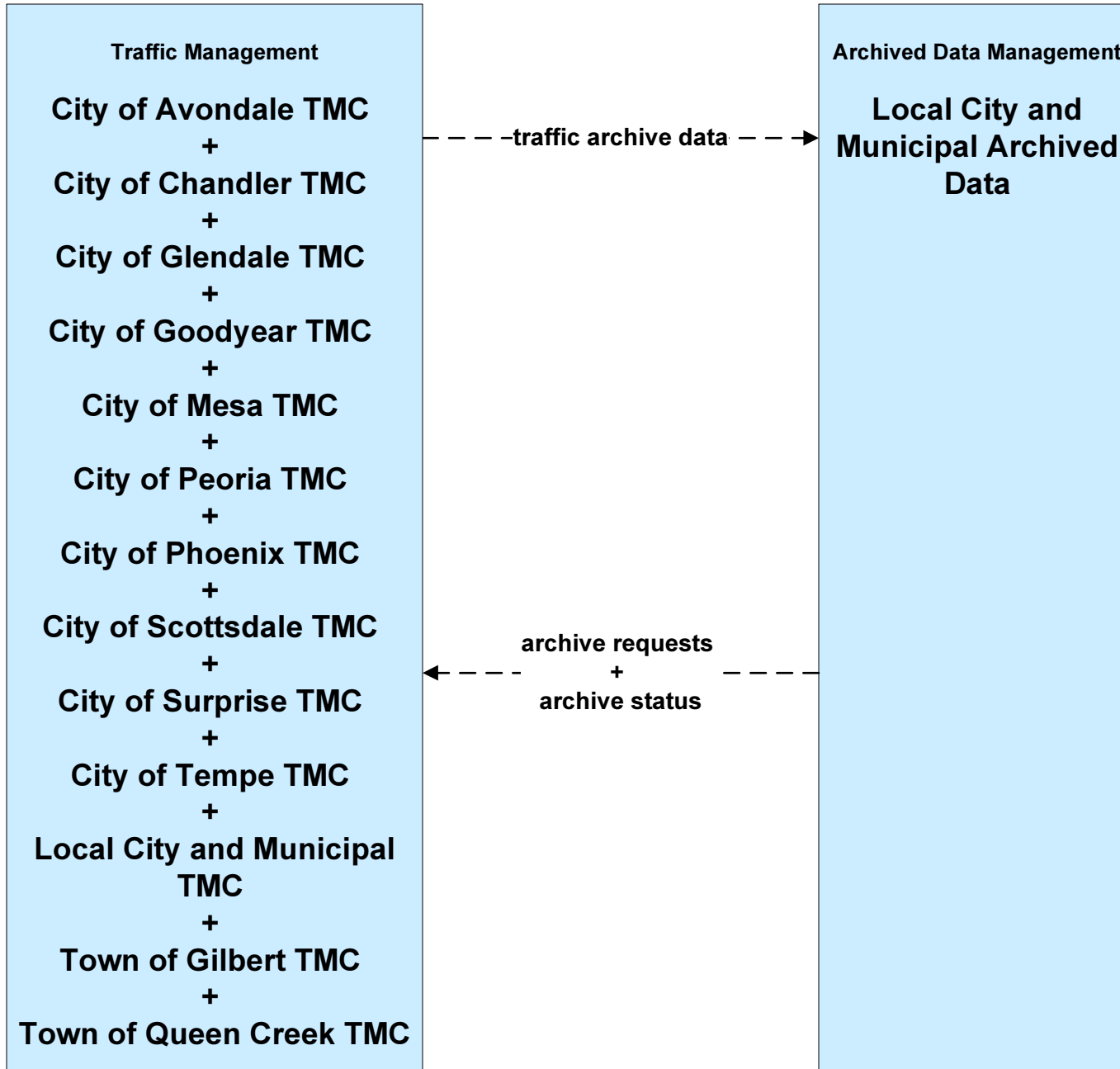


**AD1 - ITS Data Mart
Local Archives**

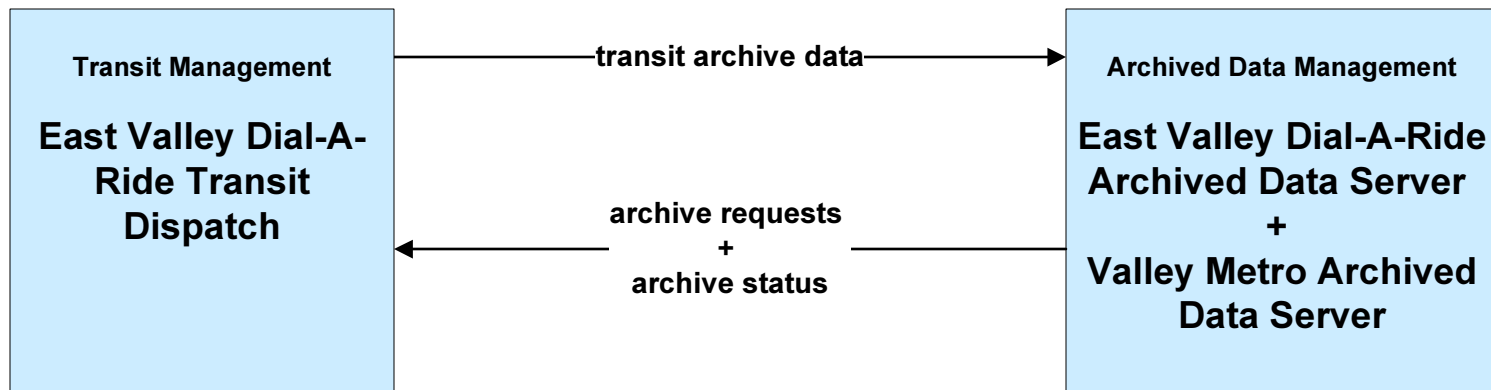
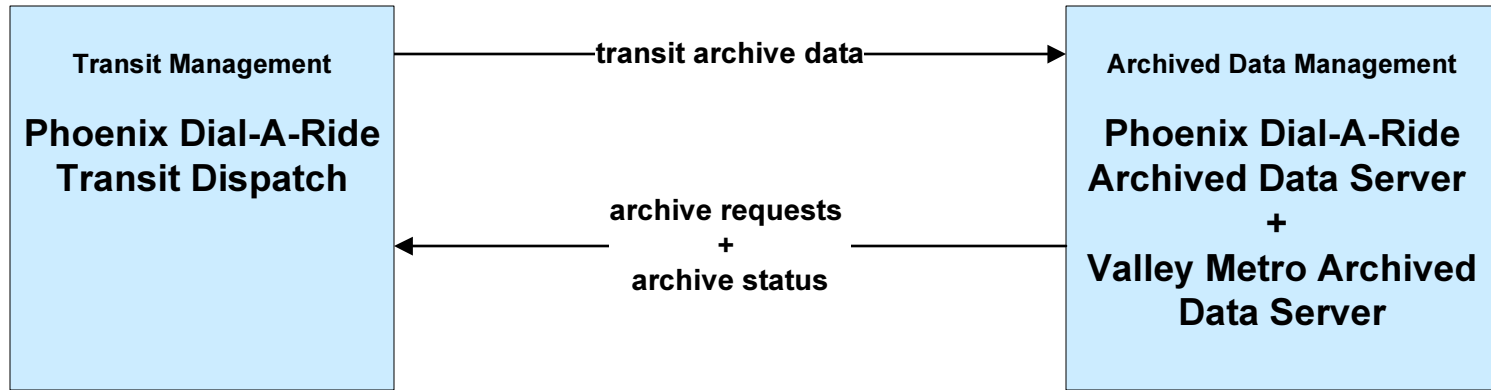


The planned and future flows are not necessarily being funded. They may reflect the desire to have the data link from either or both sides of the stakeholders.

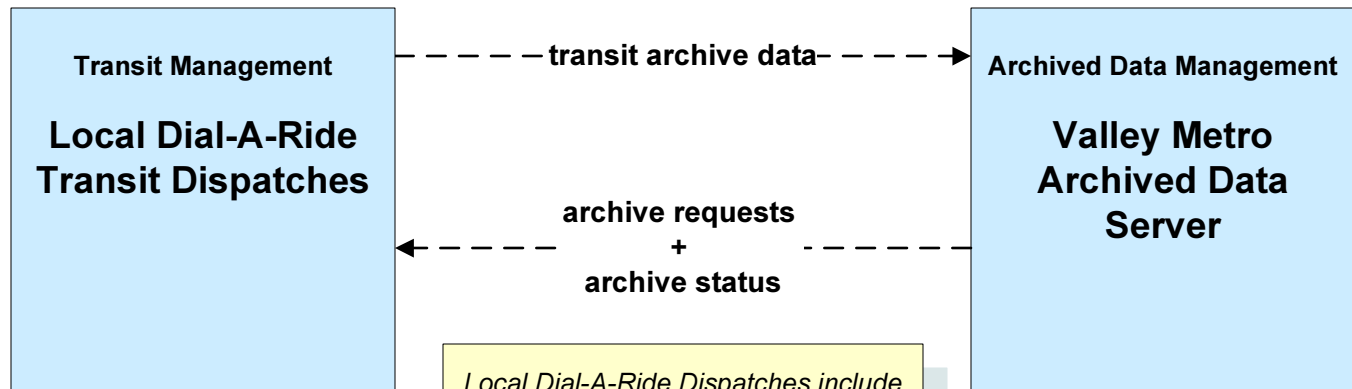
LEGEND

- planned and future flow** (dashed arrow)
- existing flow** (solid arrow)
- user defined flow** (solid arrow)

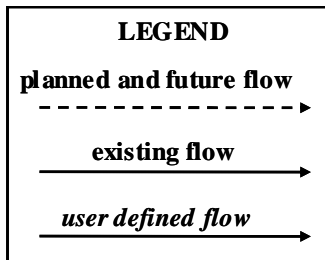
AD1 - ITS Data Mart Local Dial-A-Ride Transit Systems



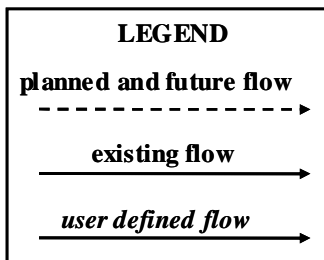
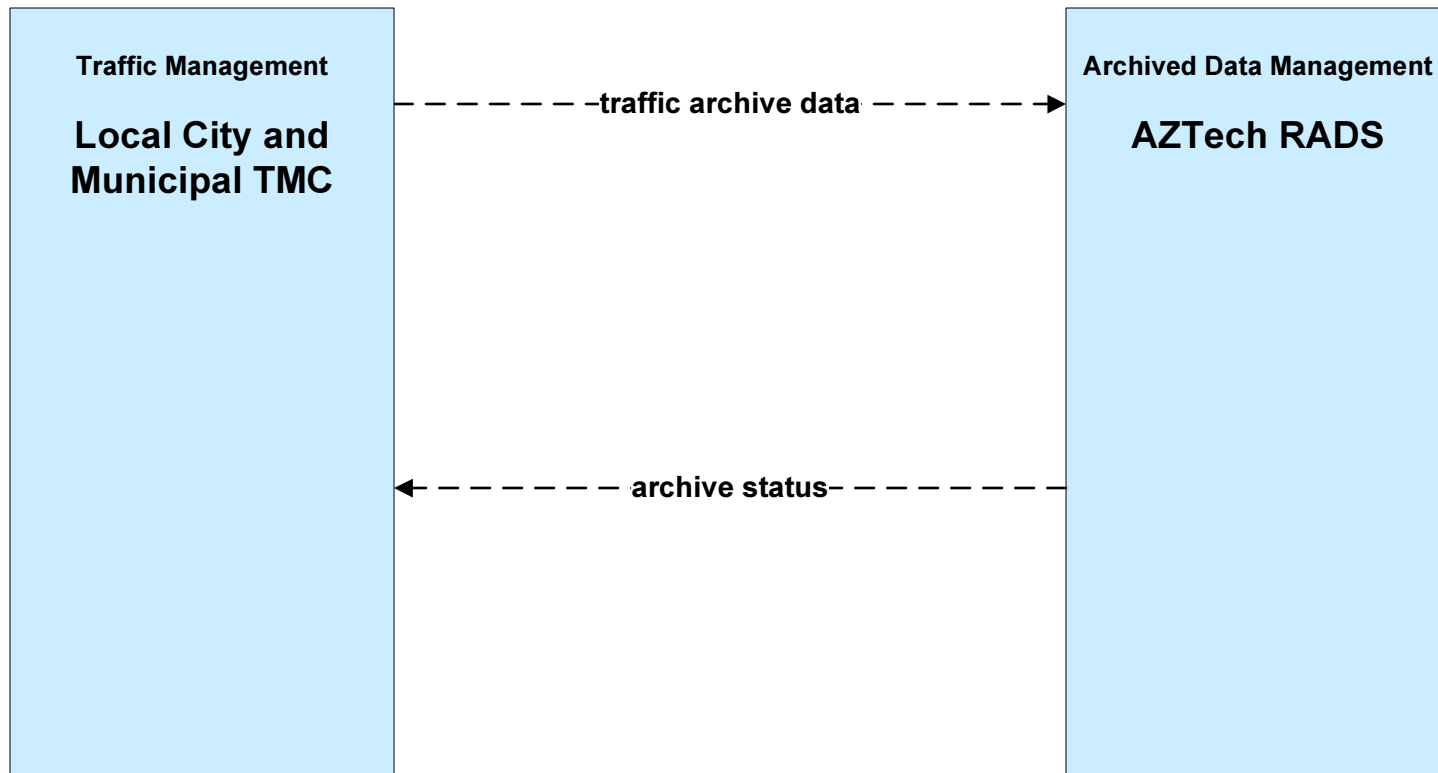
The planned and future flows are not necessarily being funded. They may reflect the desire to have the data link from either or both sides of the stakeholders.



Local Dial-A-Ride Dispatches include Glendale DAR, Northwest Valley DAR, El Mirage DAR, and MCDRTS

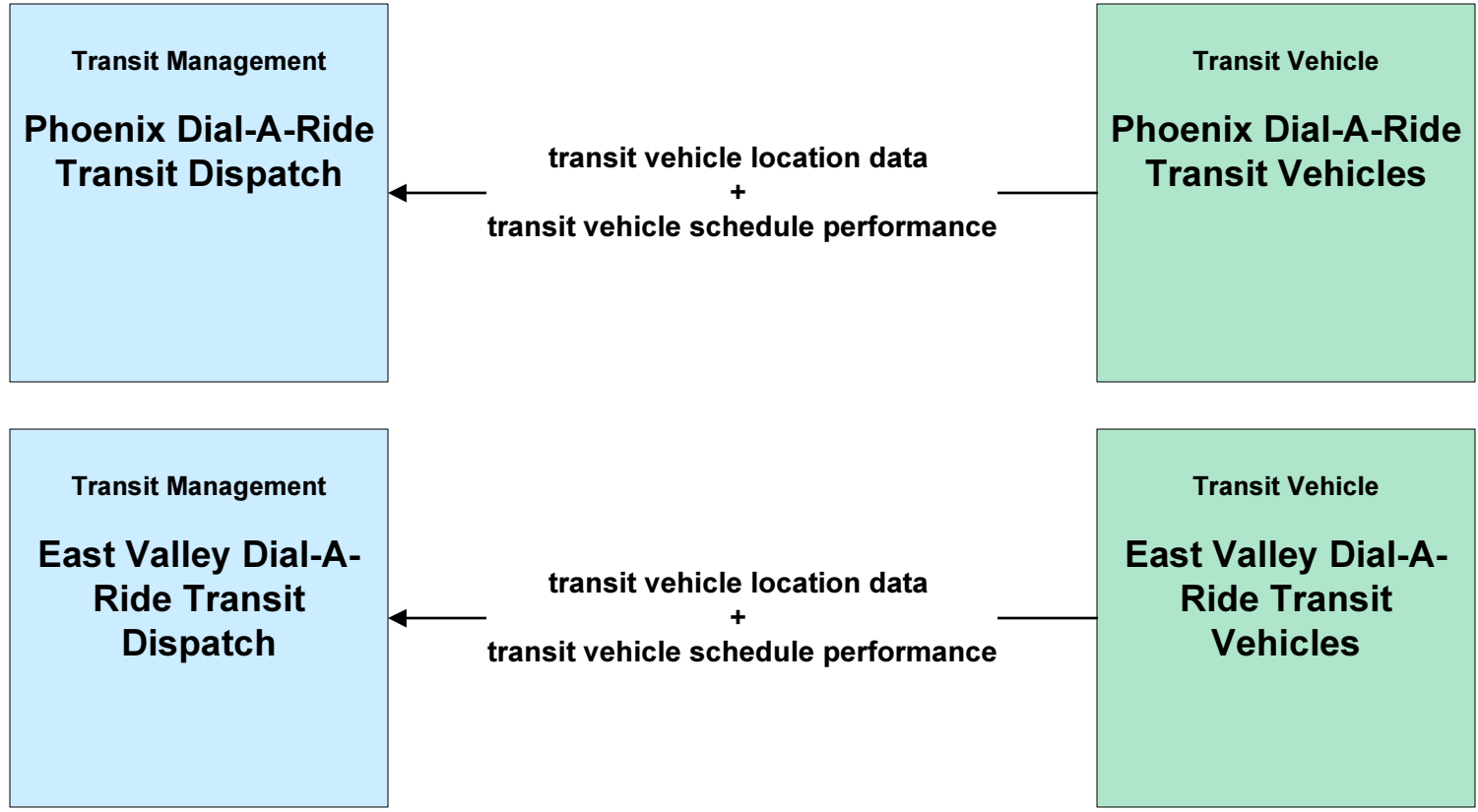


**AD2 - ITS Data Warehouse
AZTech RADS - Generic**

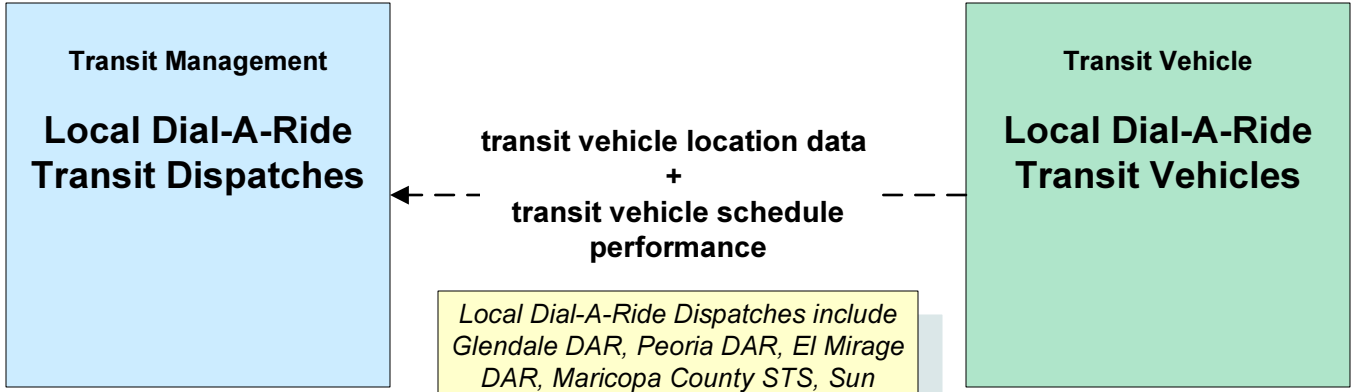


The planned and future flows are not necessarily being funded. They may reflect the desire to have the data link from either or both sides of the stakeholders.

APTS01 - Transit Vehicle Tracking Local Dial-A-Ride Transit Systems



The planned and future flows are not necessarily being funded. They may reflect the desire to have the data link from either or both sides of the stakeholders.

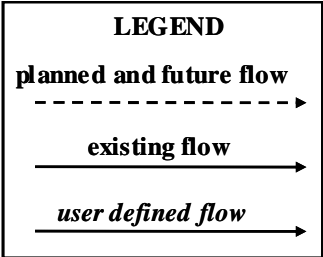
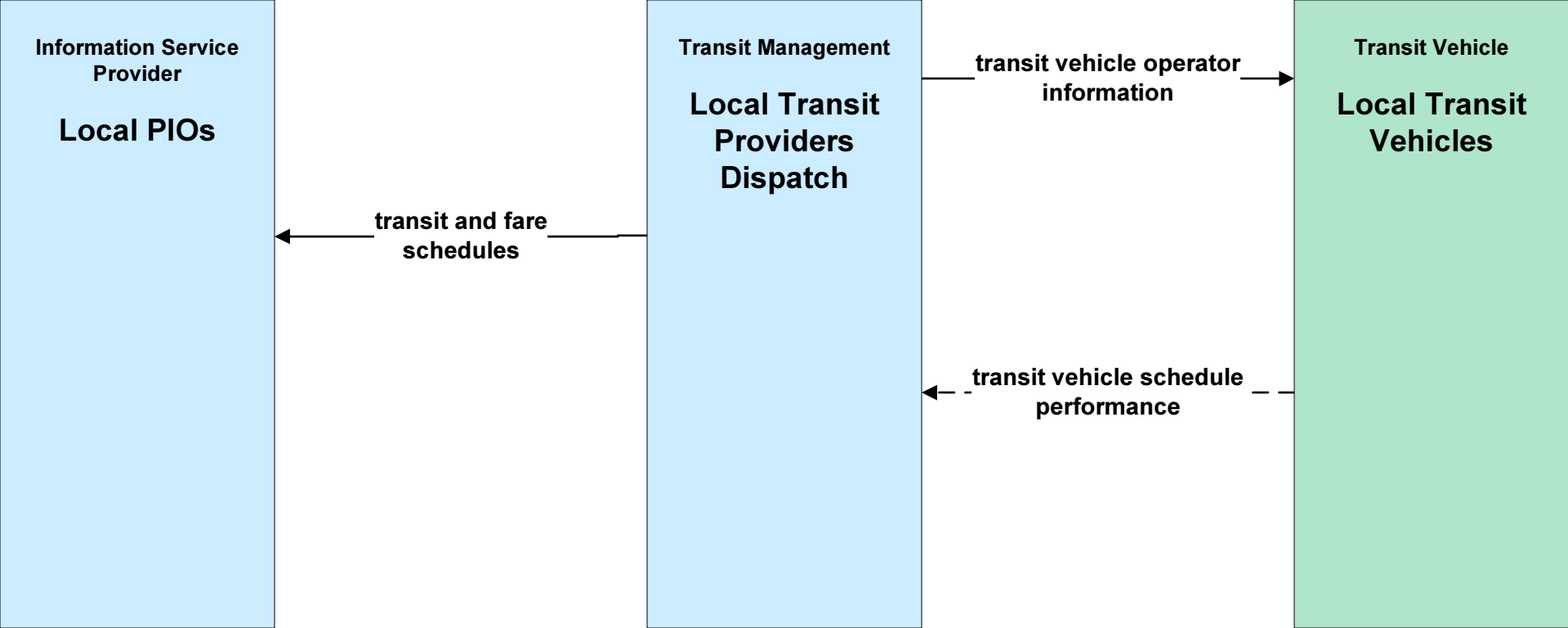


Local Dial-A-Ride Dispatches include Glendale DAR, Peoria DAR, El Mirage DAR, Maricopa County STS, Sun Cities DAR, Surprise DAR.

LEGEND

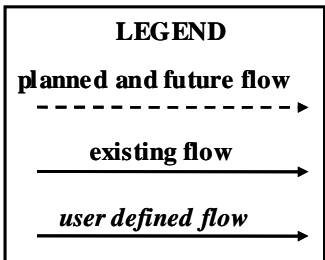
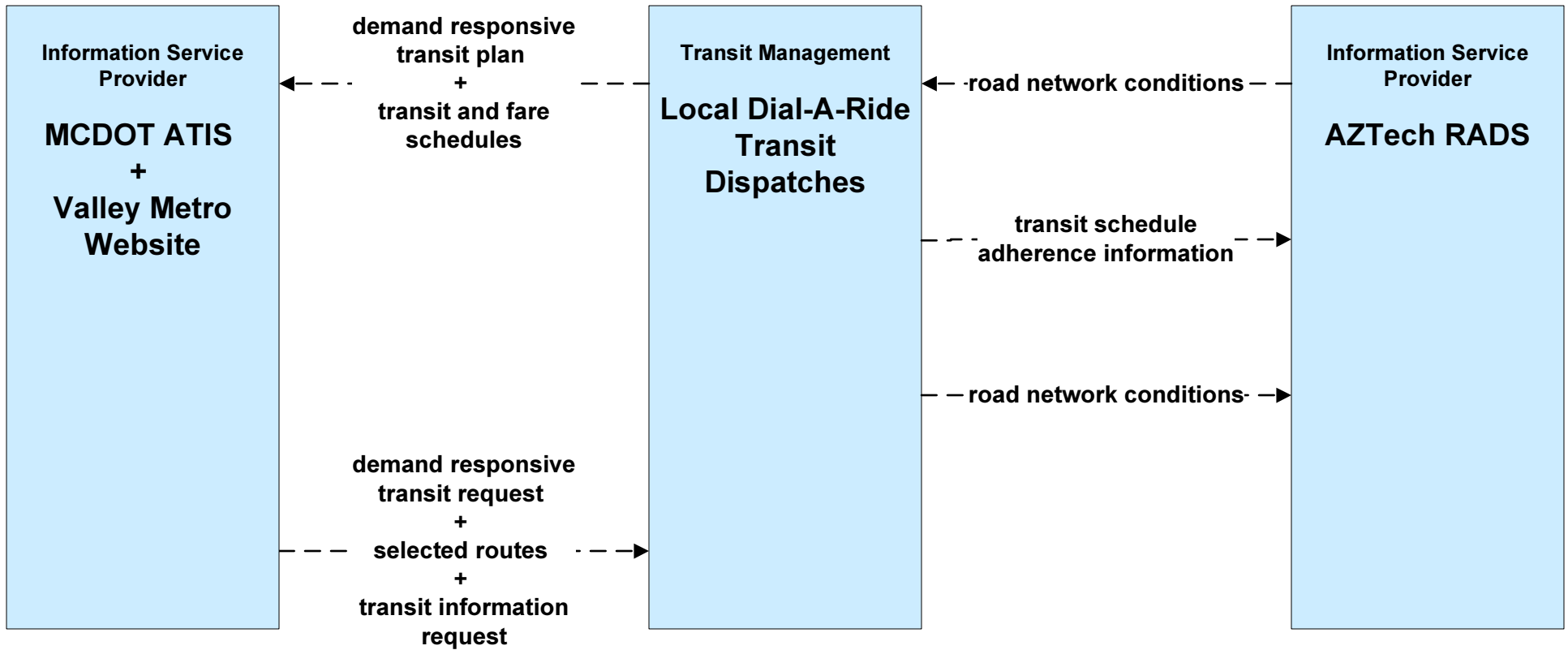
- planned and future flow**
----->
- existing flow**
—————>
- user defined flow**
—————>

APTS02 - Transit Fixed-Route Operations Local Transit Systems



The planned and future flows are not necessarily being funded. They may reflect the desire to have the data link from either or both sides of the stakeholders.

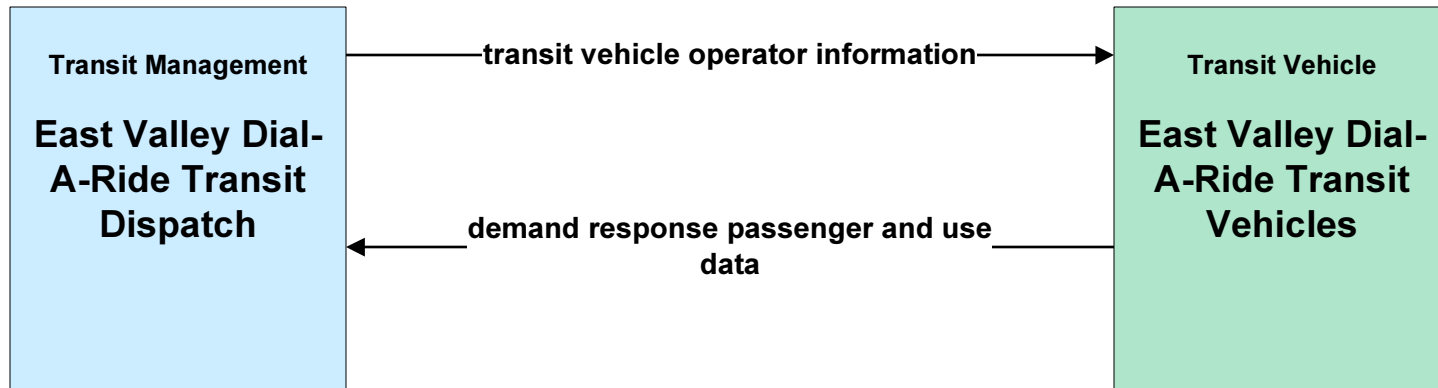
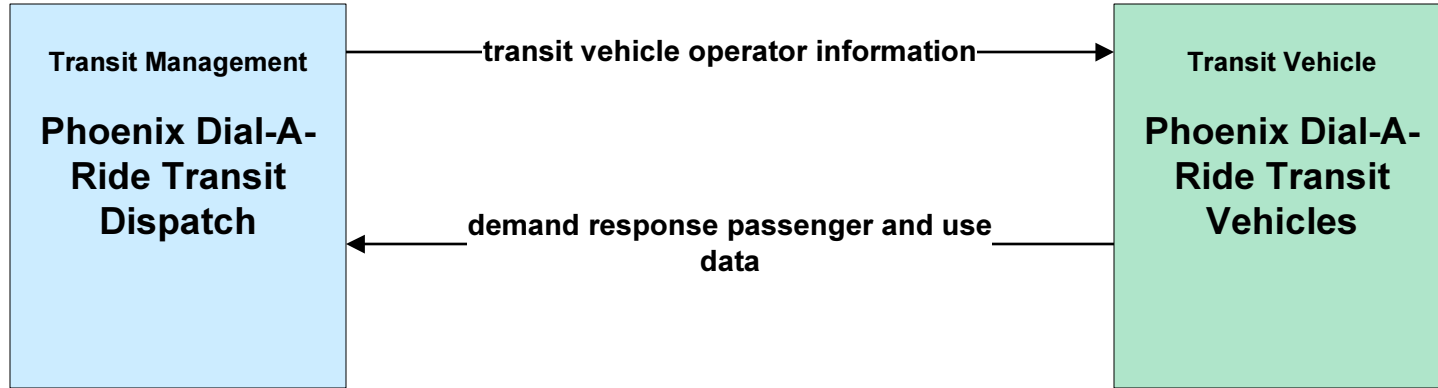
APTS03 - Demand Response Transit Operations Local Dial-A-Ride Transit Systems (1 of 2)



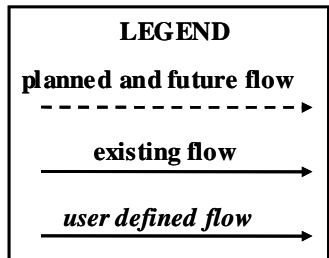
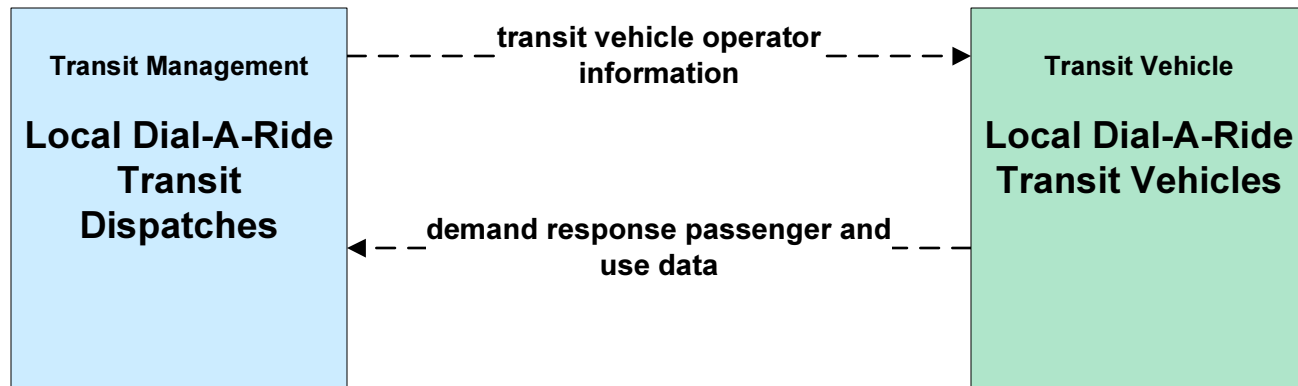
The planned and future flows are not necessarily being funded. They may reflect the desire to have the data link from either or both sides of the stakeholders.

APTS03 - Demand Response Transit Operations

Local Dial-A-Ride Transit Systems (2 of 2)

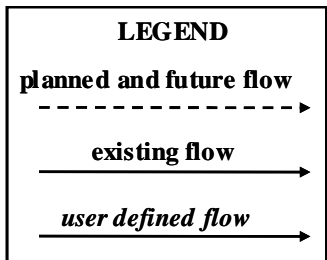
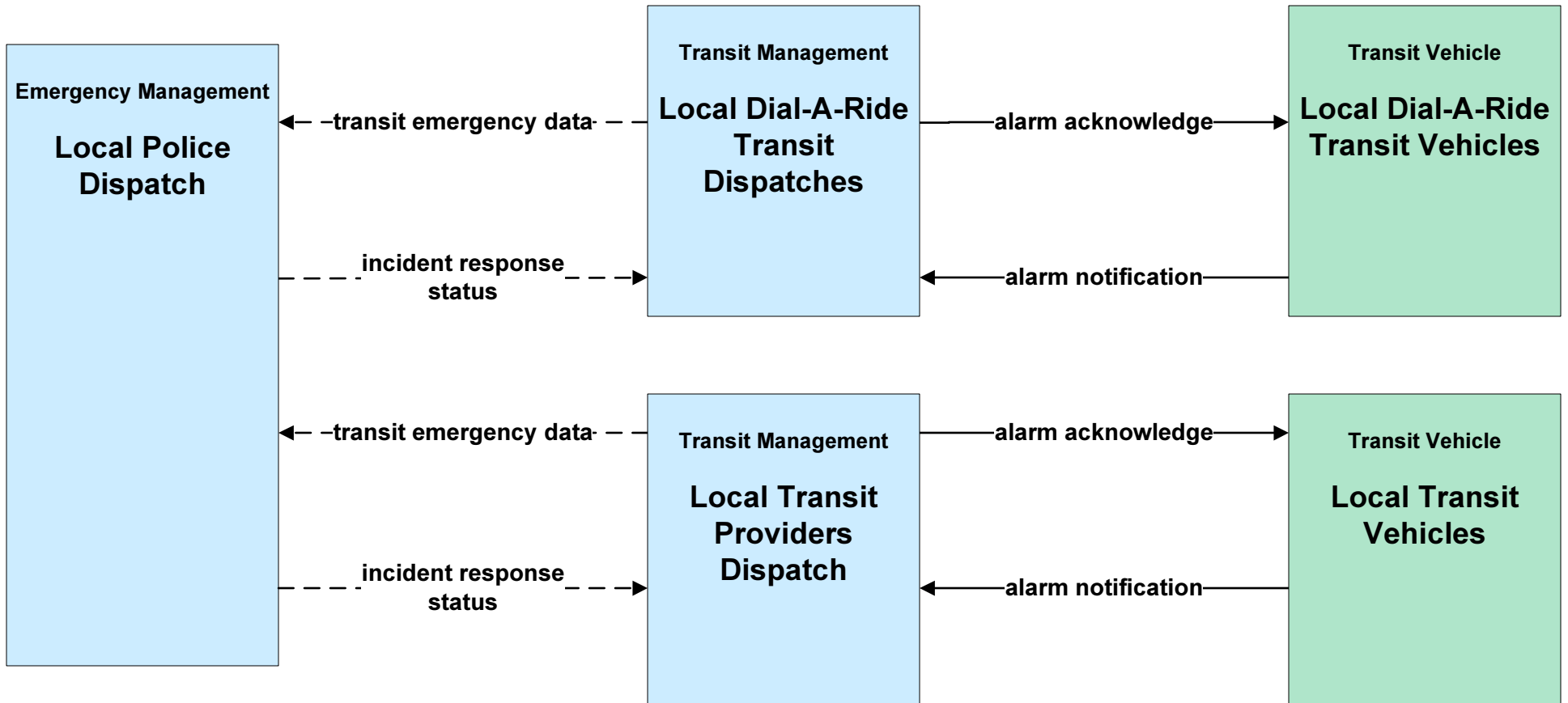


The planned and future flows are not necessarily being funded. They may reflect the desire to have the data link from either or both sides of the stakeholders.



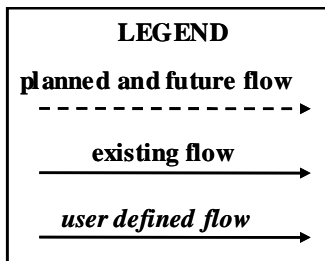
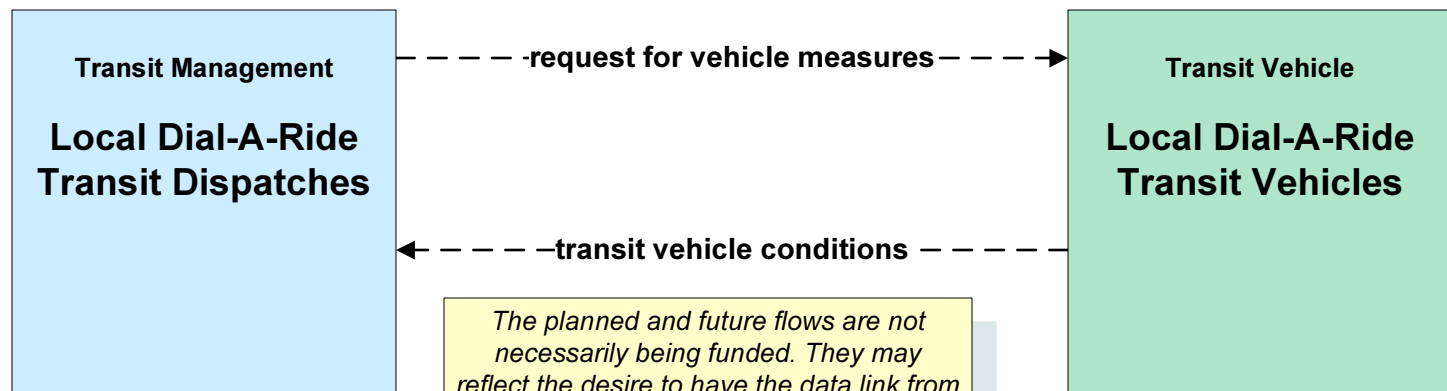
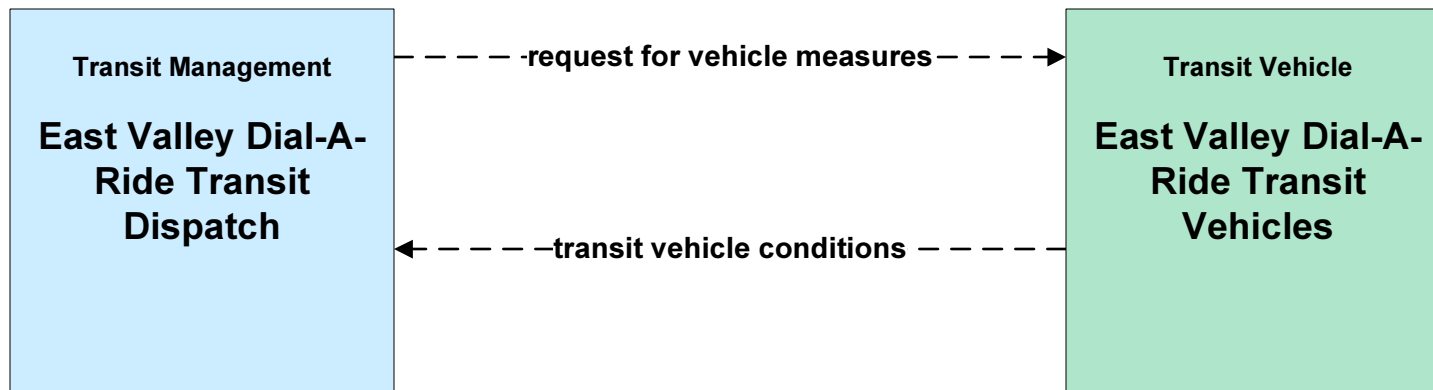
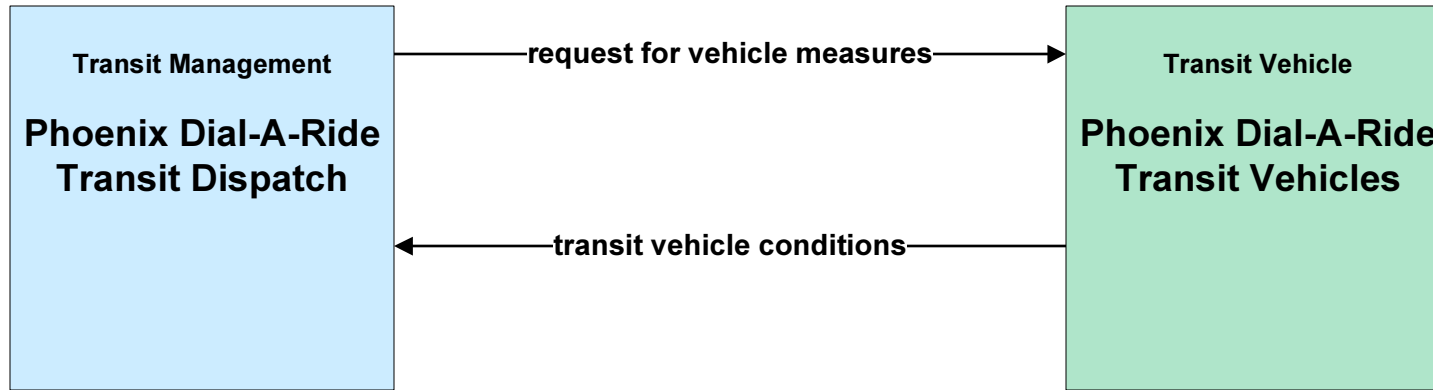
APTS05 - Transit Security

Local Dial-A-Ride and Local Transit Systems



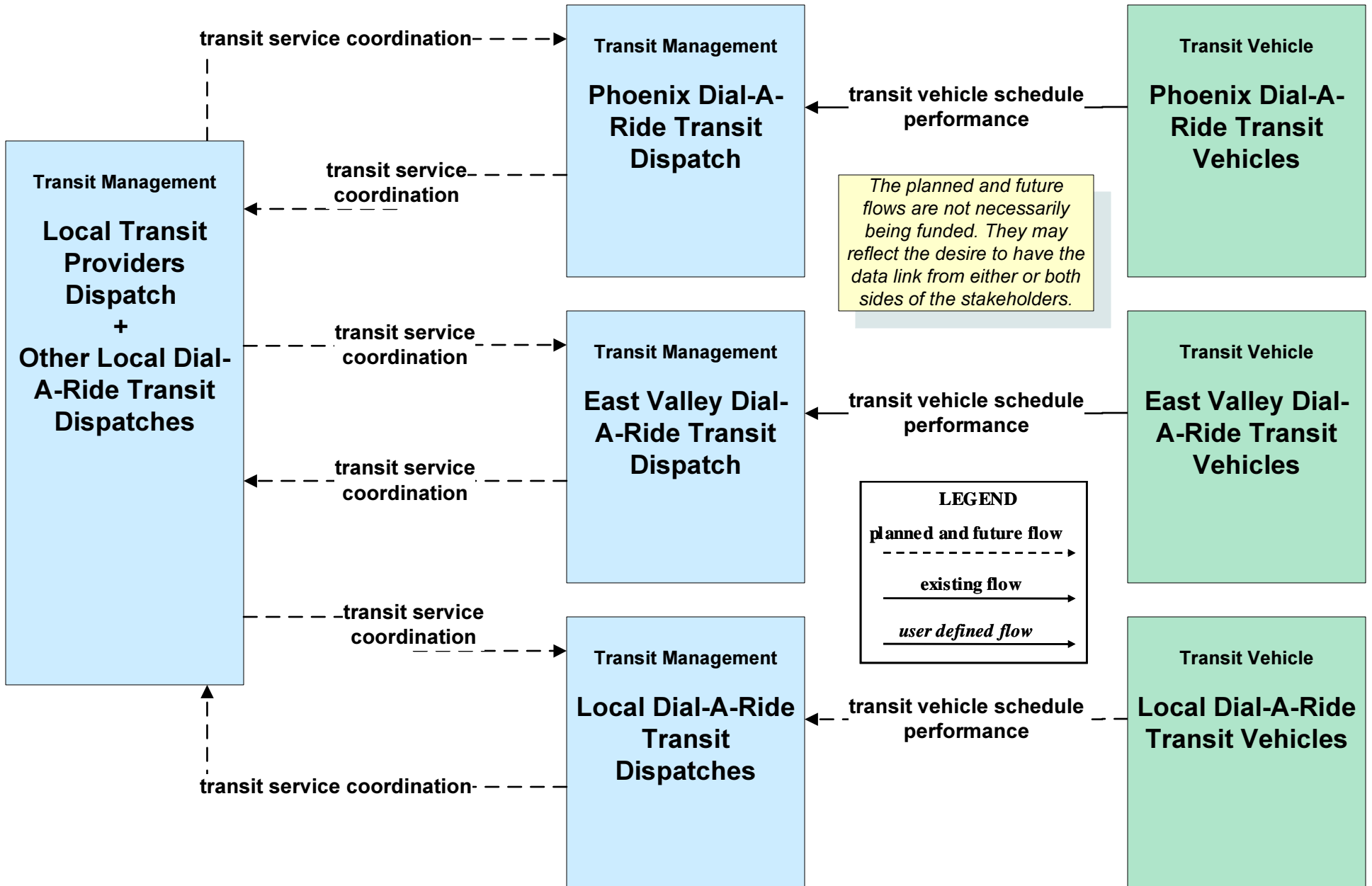
The planned and future flows are not necessarily being funded. They may reflect the desire to have the data link from either or both sides of the stakeholders.

APTS06 - Transit Fleet Management Local Dial-A-Ride Transit Systems



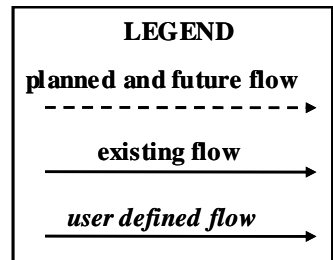
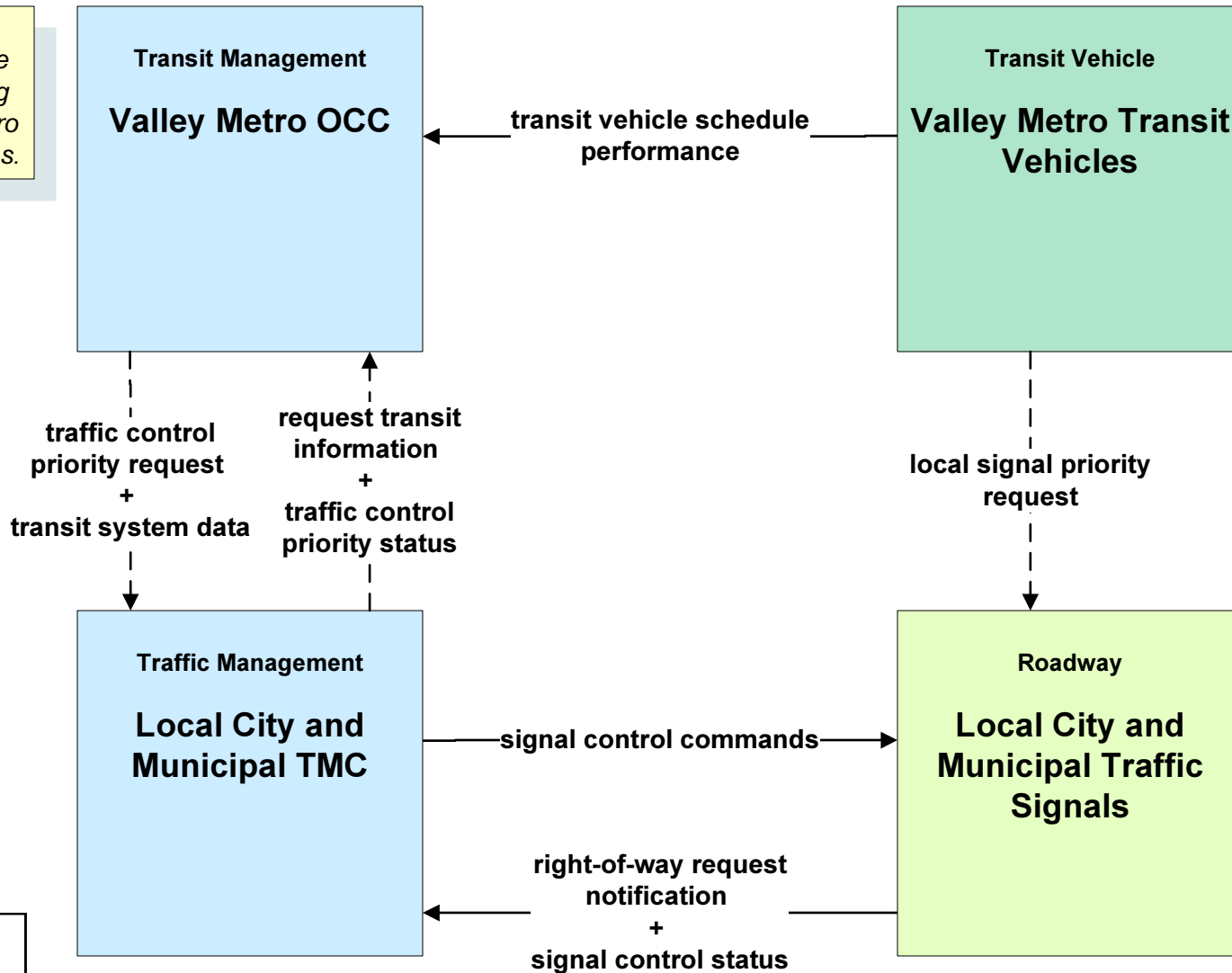
The planned and future flows are not necessarily being funded. They may reflect the desire to have the data link from either or both sides of the stakeholders.

APTS07 - Multi-modal Coordination Local Dial-A-Ride Transit Systems



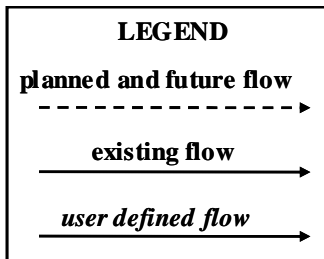
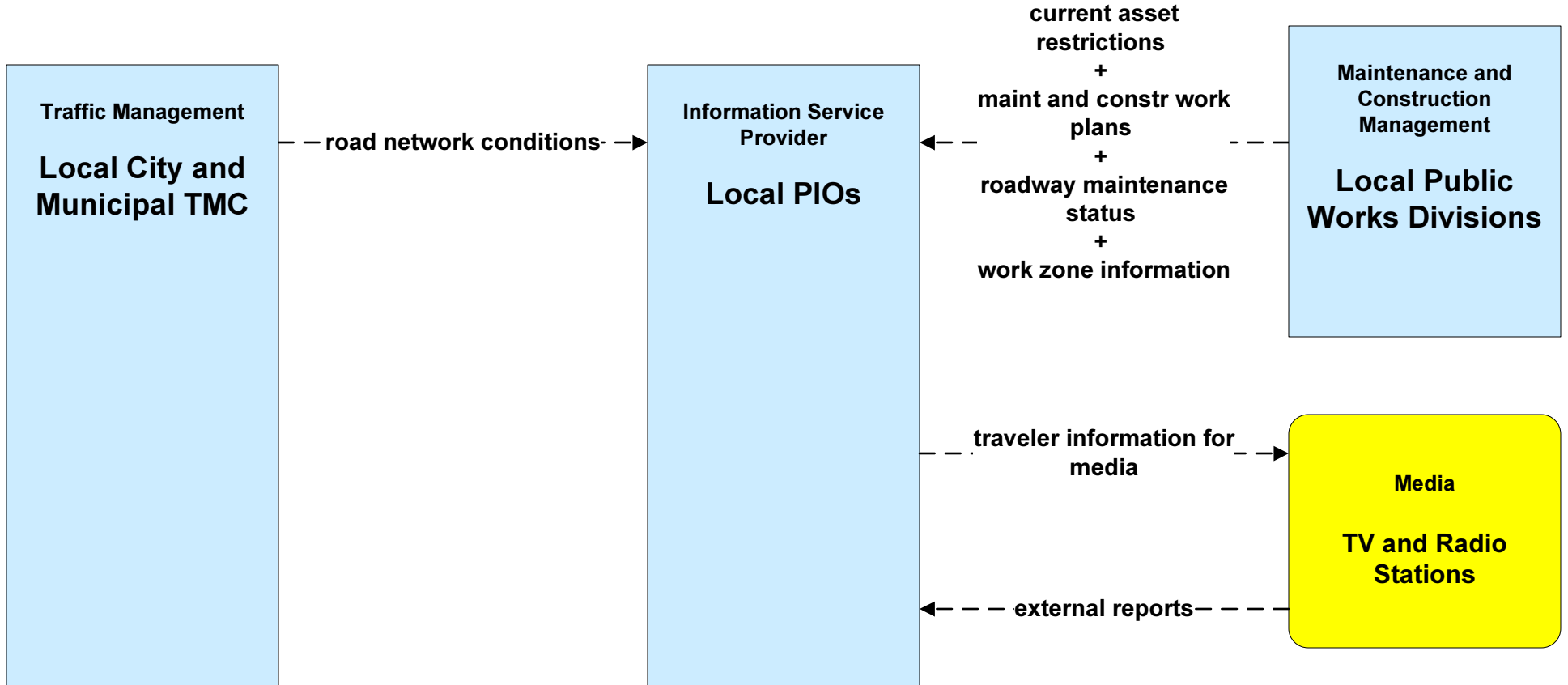
APTS09 – Transit Signal Priority Valley Metro – Local Cities and Municipalities - Generic

Many cities have infrastructure in place which is not yet being utilized by Valley Metro or local transit services.



The planned and future flows are not necessarily being funded. They may reflect the desire to have the data link from either or both sides of the stakeholders.

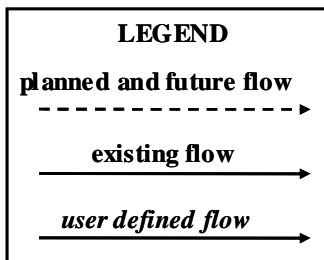
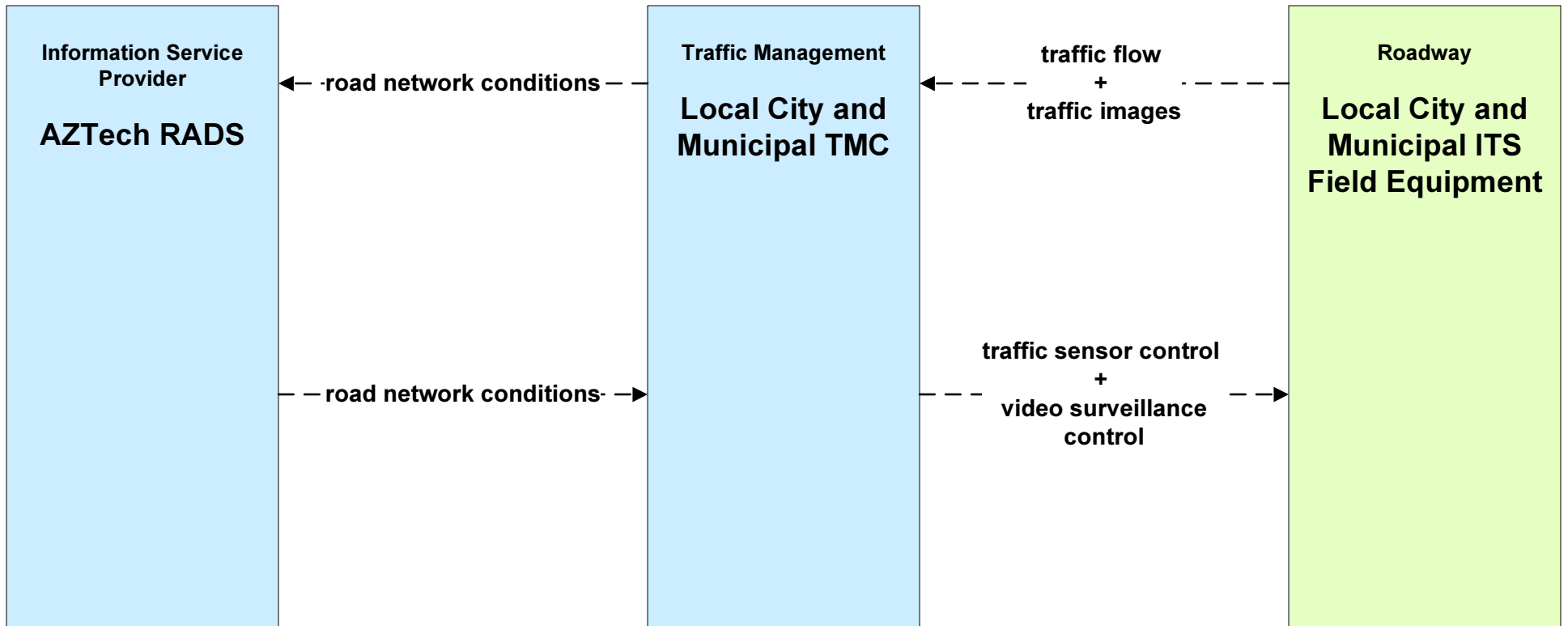
ATIS01 - Broadcast Traveler Information Local Cities and Municipalities - Generic



The planned and future flows are not necessarily being funded. They may reflect the desire to have the data link from either or both sides of the stakeholders.

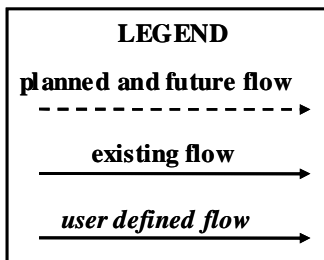
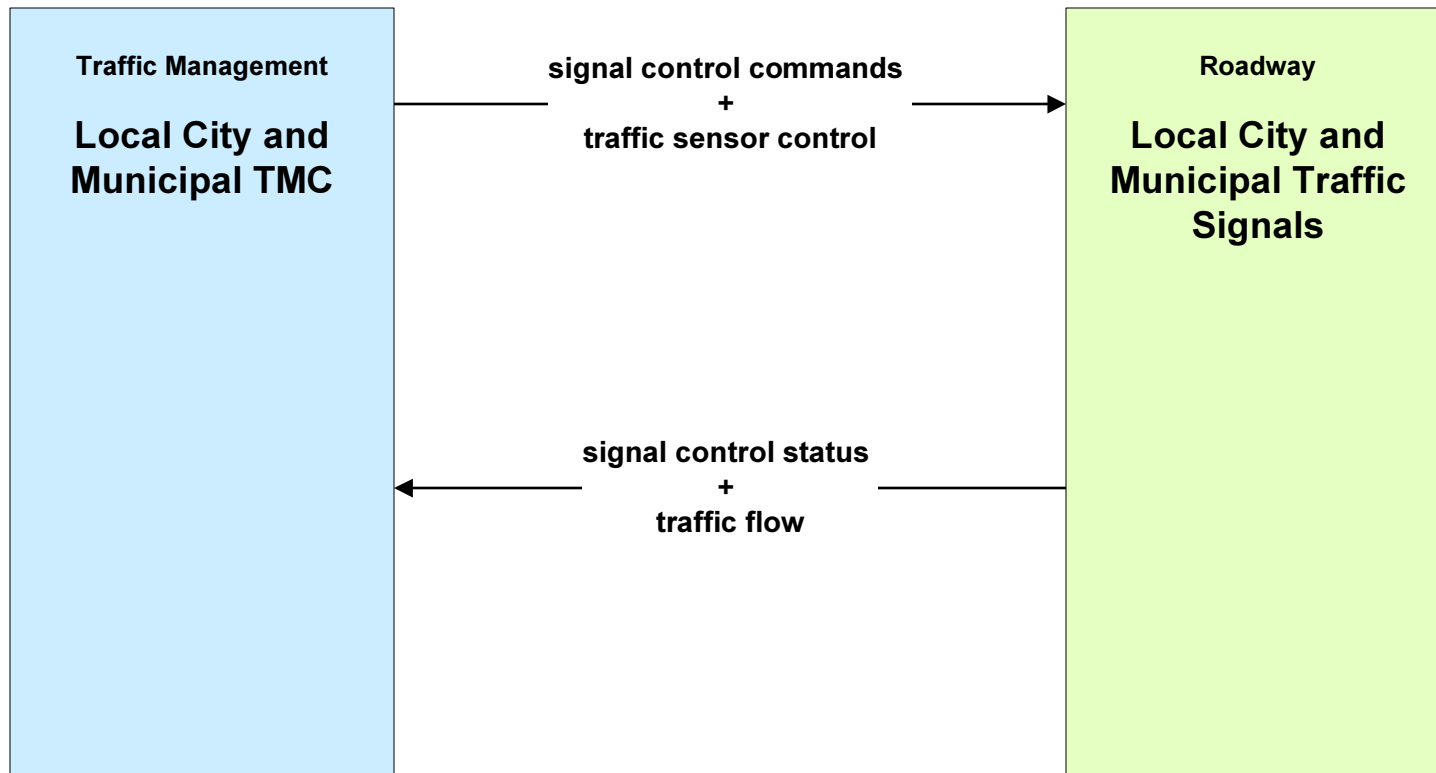
ATMS01 - Network Surveillance

Local Cities and Municipalities - Generic

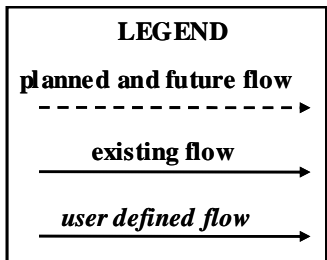
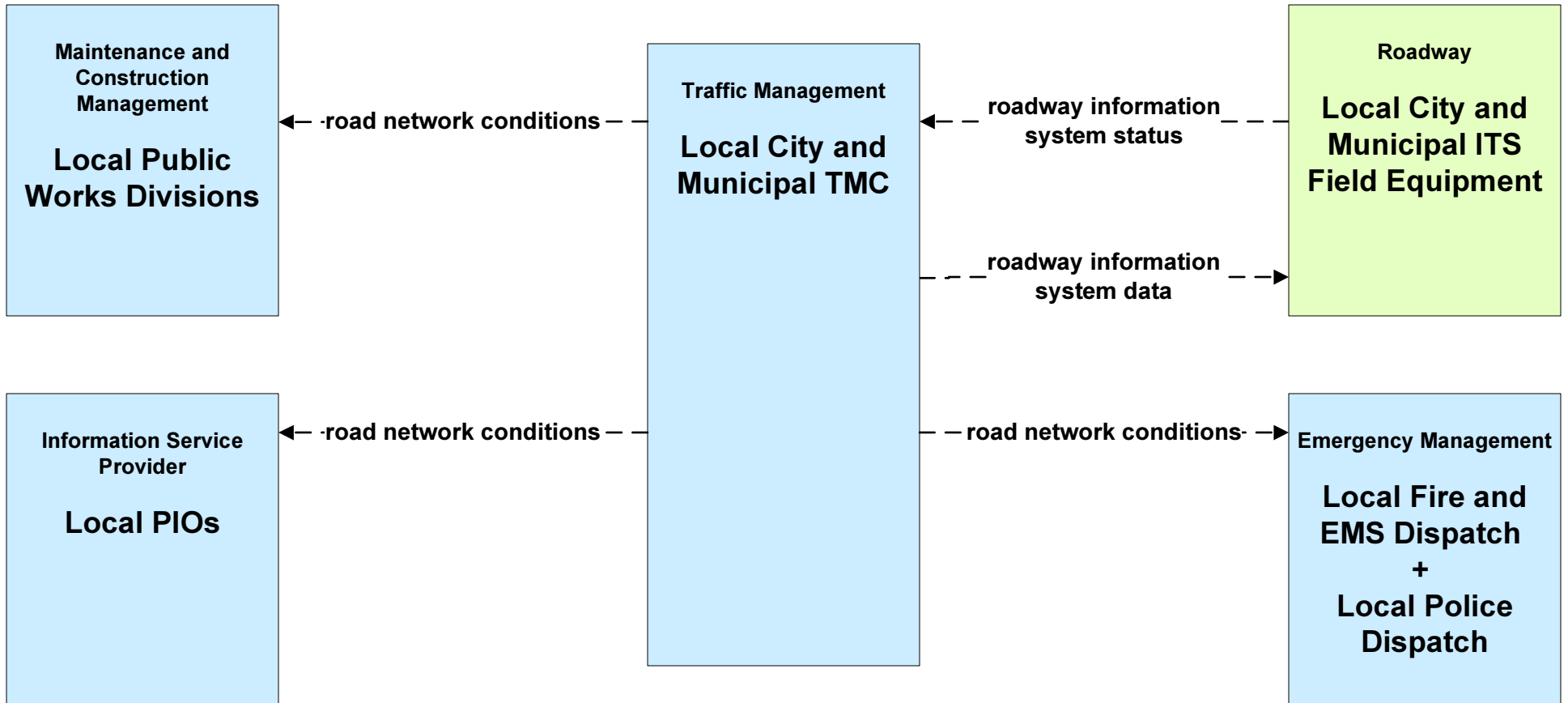


The planned and future flows are not necessarily being funded. They may reflect the desire to have the data link from either or both sides of the stakeholders.

ATMS03 - Traffic Signal Control
Local Cities and Municipalities - Generic



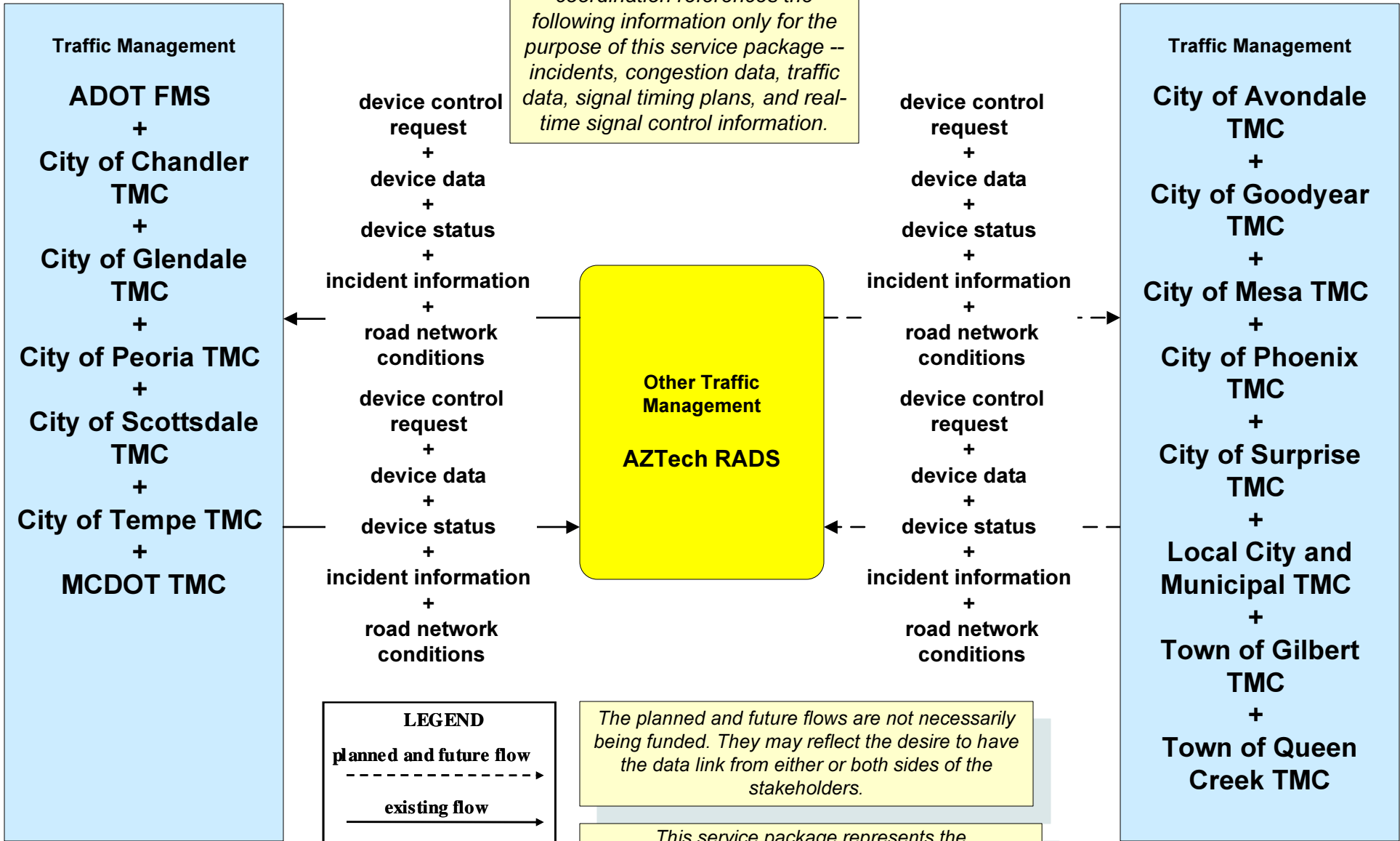
ATMS06 - Traffic Information Dissemination Local Cities and Municipalities - Generic



The planned and future flows are not necessarily being funded. They may reflect the desire to have the data link from either or both sides of the stakeholders.

ATMS07 - Regional Traffic Management AZTech C2C TMS Network

Note that traffic information coordination references the following information only for the purpose of this service package -- incidents, congestion data, traffic data, signal timing plans, and real-time signal control information.



LEGEND

planned and future flow →

existing flow →

user defined flow →

The planned and future flows are not necessarily being funded. They may reflect the desire to have the data link from either or both sides of the stakeholders.

This service package represents the communication between TMCs and the AZTech RADS system and are shown as separate because some are existing and some are planned communications.

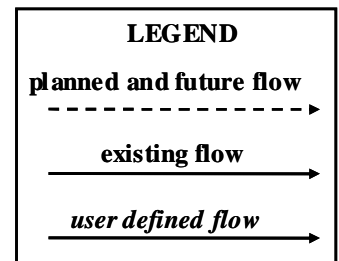
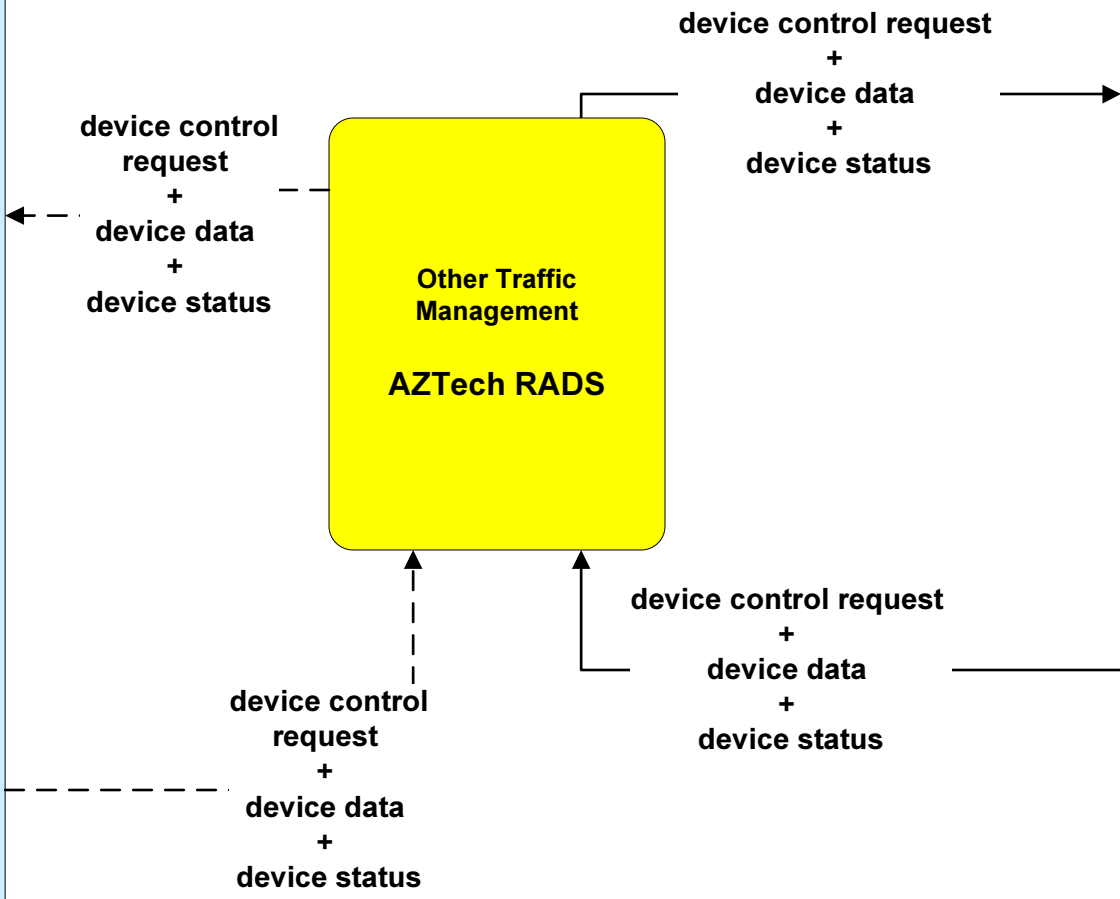
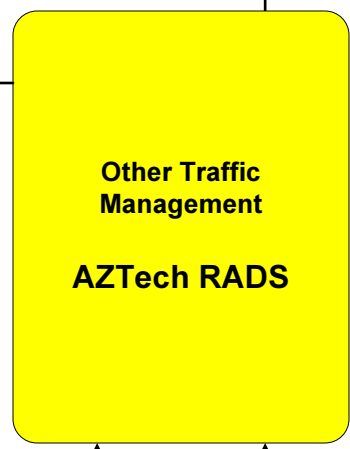
ATMS07 - Regional Traffic Management AZTech C2C DMS Network

This service package represents the communication between TMCs and the AZTech RADS system and are shown as separate because some are existing and some are planned communications. The existing flows to TMCs represent the coordination occurring along the Bell Road corridor.

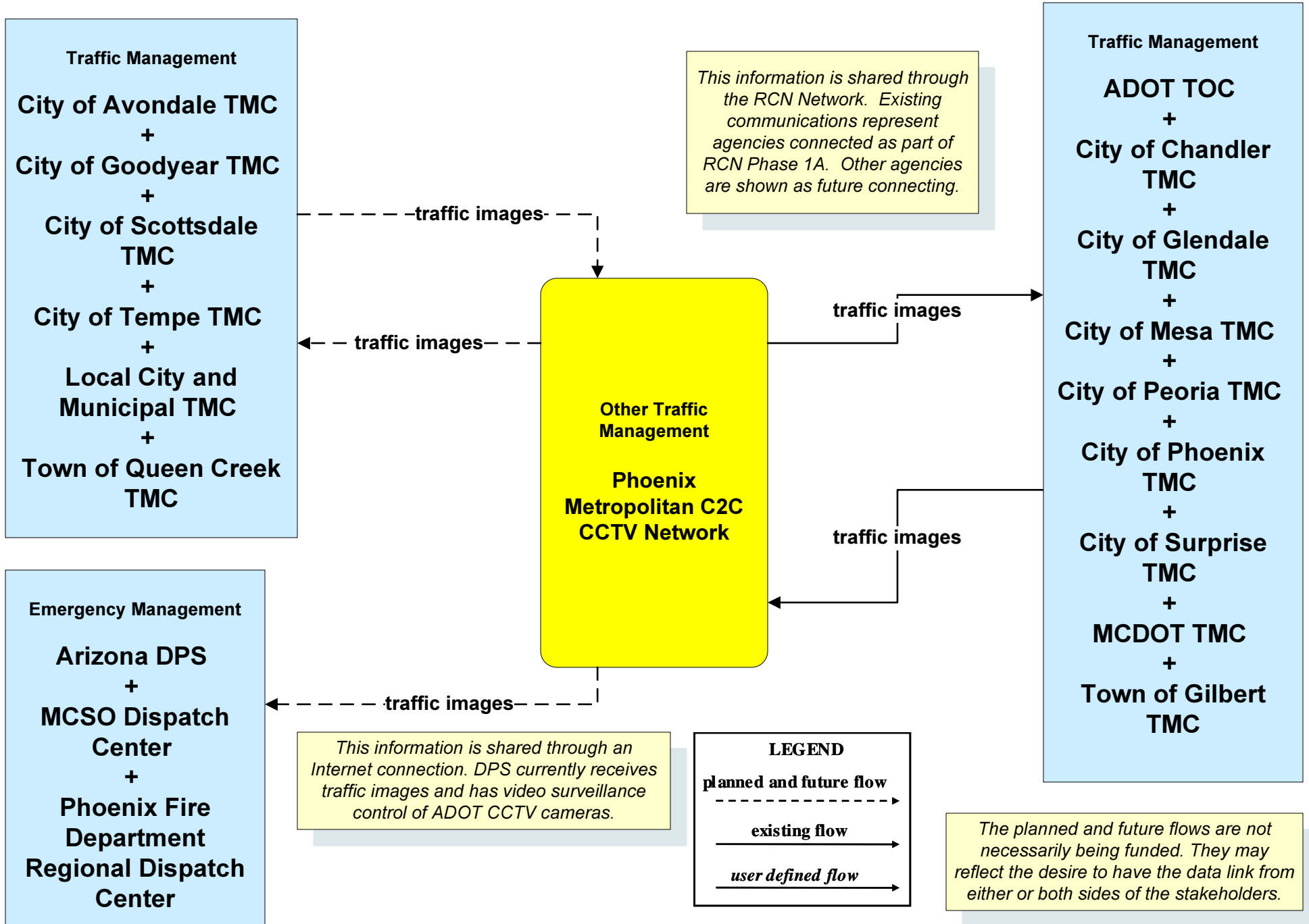
The planned and future flows are not necessarily being funded. They may reflect the desire to have the data link from either or both sides of the stakeholders.

- Traffic Management**
- City of Avondale TMC
 - +
 - City of Chandler TMC
 - +
 - City of Glendale TMC
 - +
 - City of Goodyear TMC
 - +
 - City of Mesa TMC
 - +
 - City of Phoenix TMC
 - +
 - City of Scottsdale TMC
 - +
 - City of Tempe TMC
 - +
 - Local City and Municipal TMC
 - +
 - Town of Gilbert TMC
 - +
 - Town of Queen Creek TMC

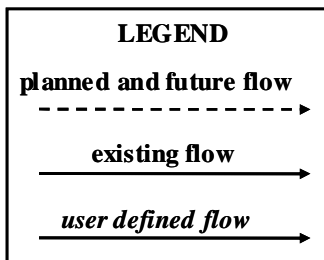
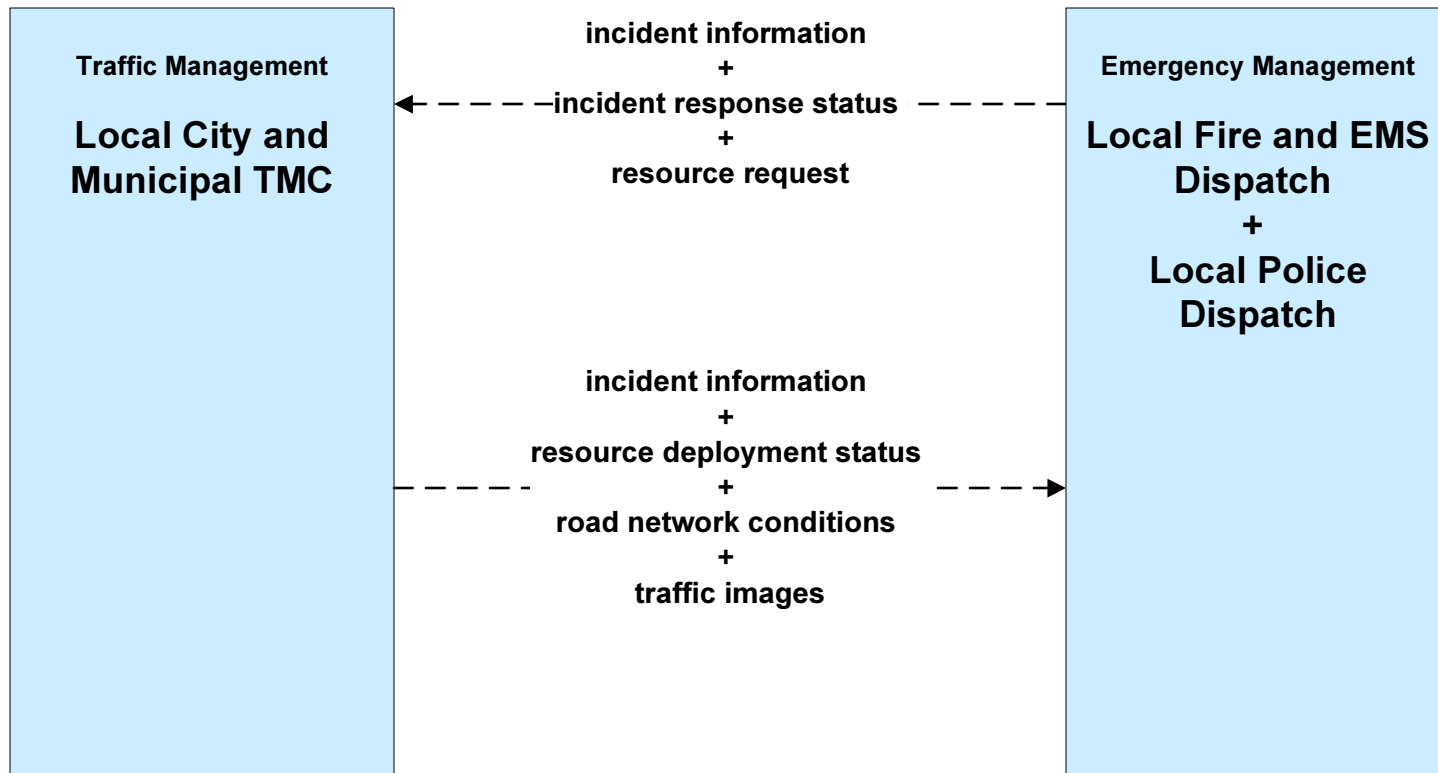
- Traffic Management**
- ADOT TOC
 - +
 - City of Peoria TMC
 - +
 - City of Surprise TMC
 - +
 - MCDOT TMC



ATMS07 - Regional Traffic Management Phoenix Metropolitan C2C CCTV Network

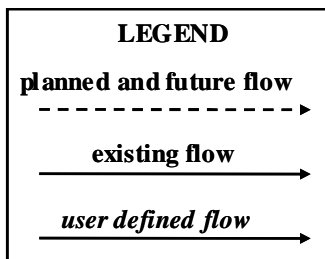
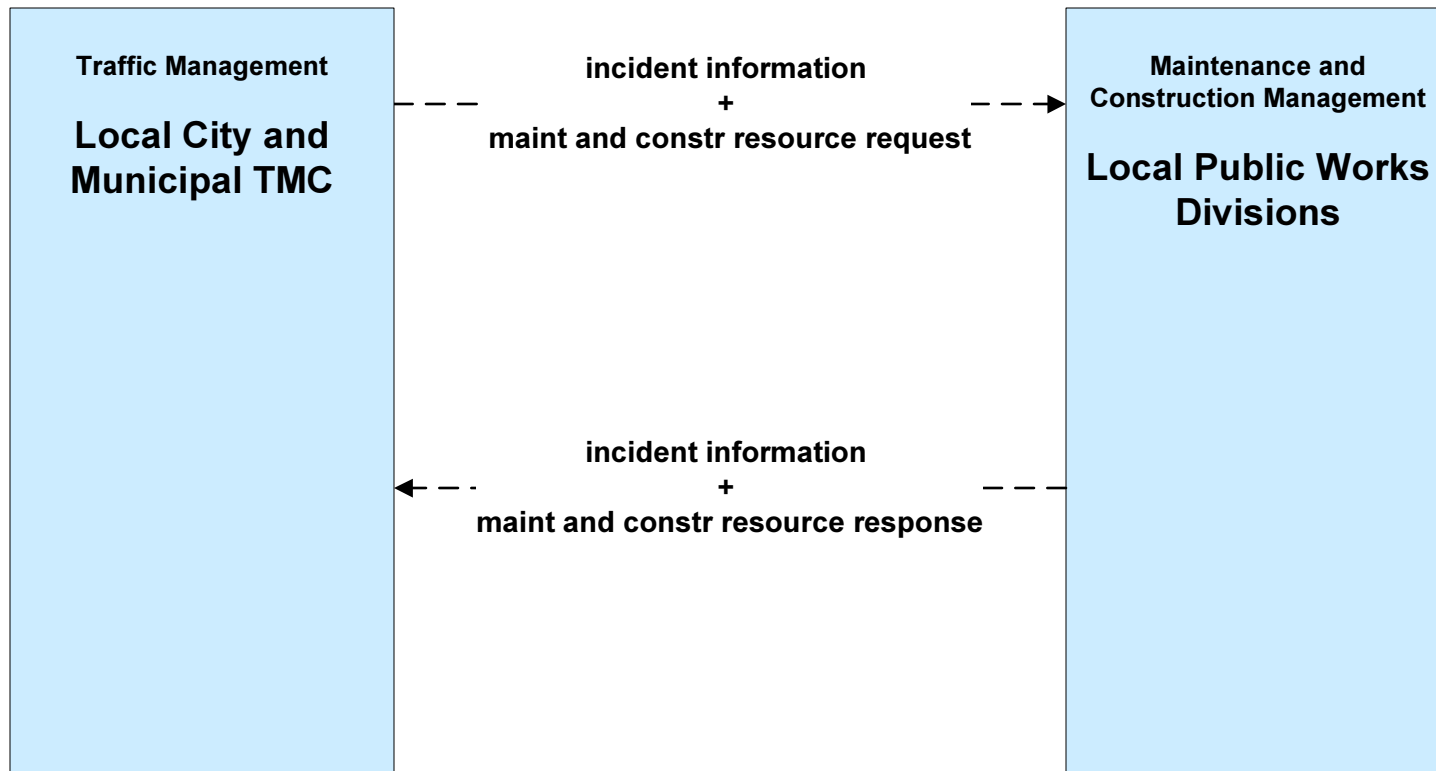


**ATMS08 - Traffic Incident Management System
Local Cities and Municipalities – Generic (TM to EM)**



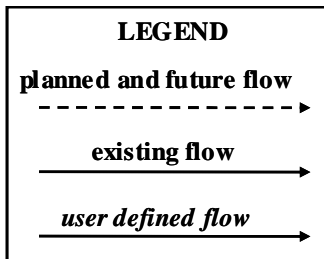
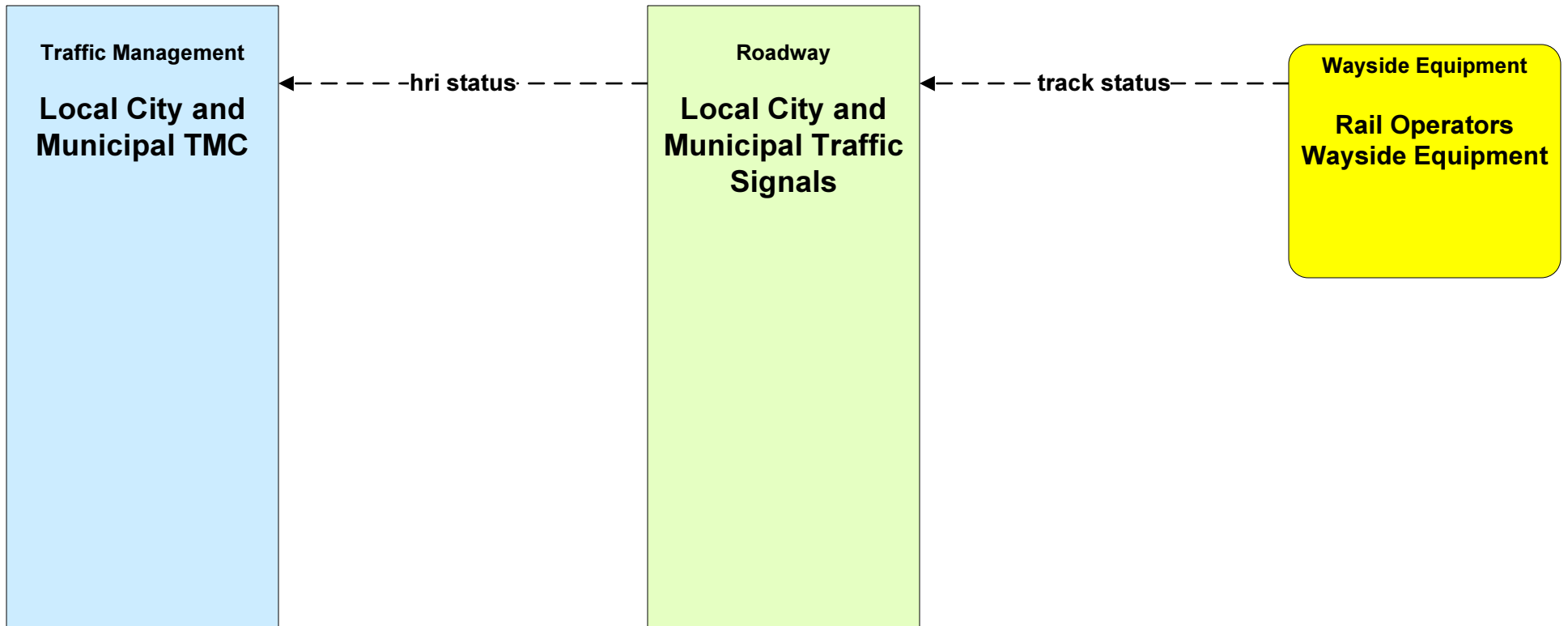
The planned and future flows are not necessarily being funded. They may reflect the desire to have the data link from either or both sides of the stakeholders.

**ATMS08 - Traffic Incident Management System
Local Cities and Municipalities – Generic (TM to MCM)**



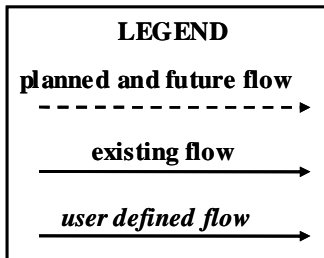
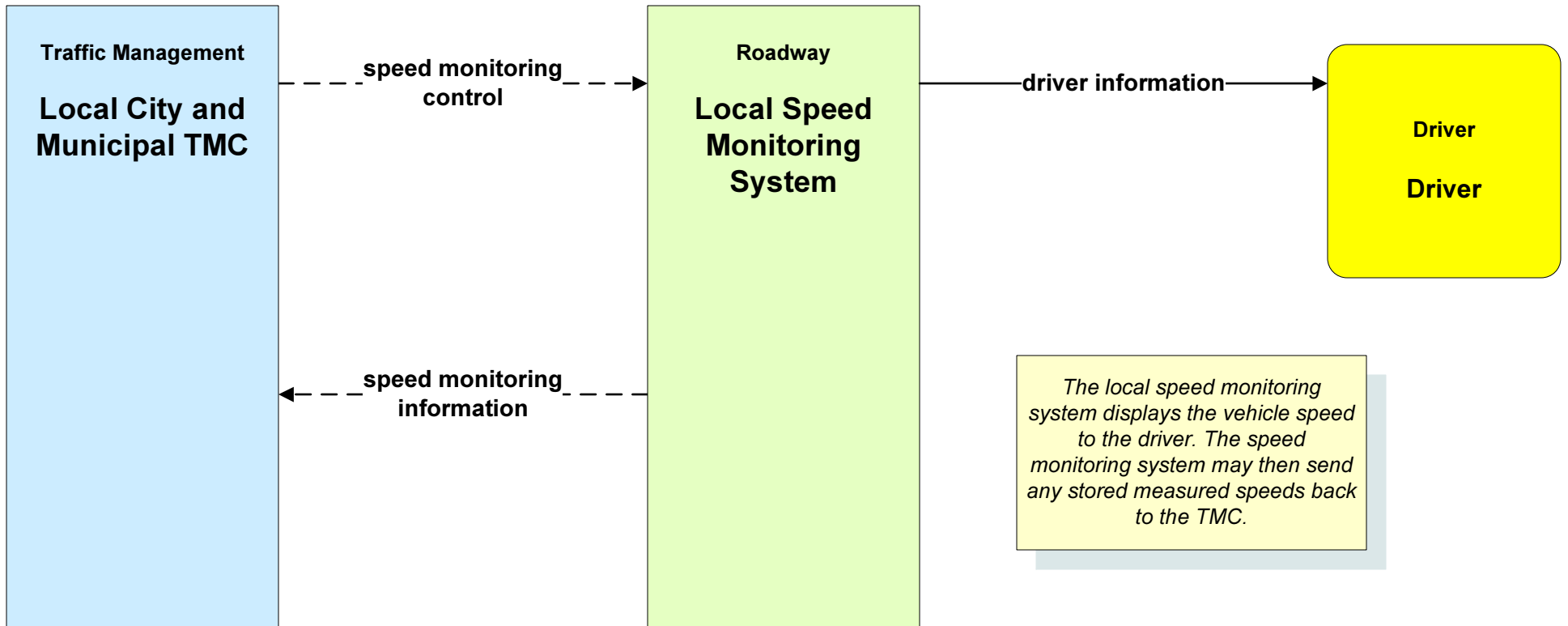
The planned and future flows are not necessarily being funded. They may reflect the desire to have the data link from either or both sides of the stakeholders.

**ATMS13 - Standard Railroad Grade Crossing
Local Cities and Municipalities - Generic**



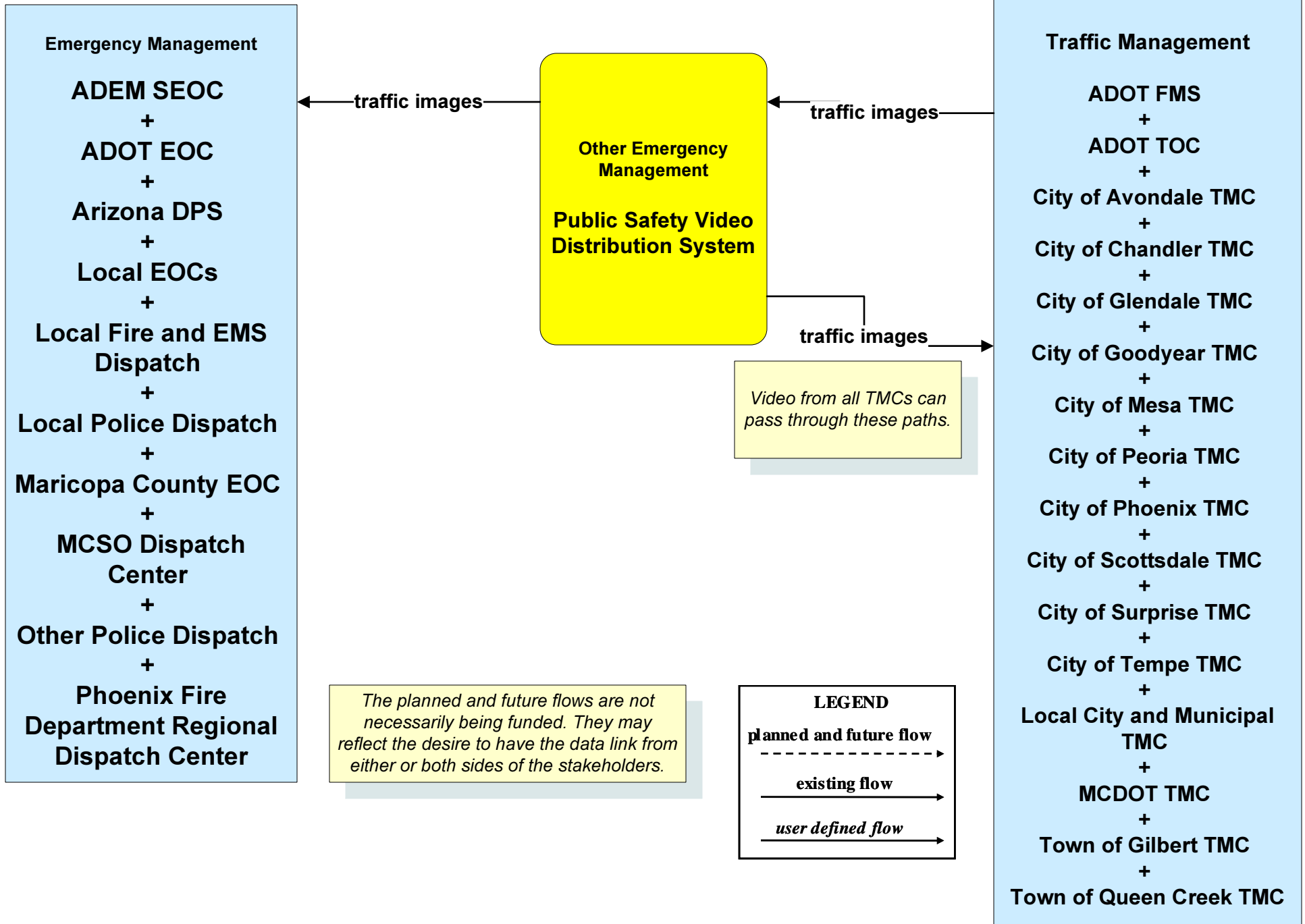
The planned and future flows are not necessarily being funded. They may reflect the desire to have the data link from either or both sides of the stakeholders.

ATMS19 - Speed Warning and Enforcement Local Cities and Municipalities

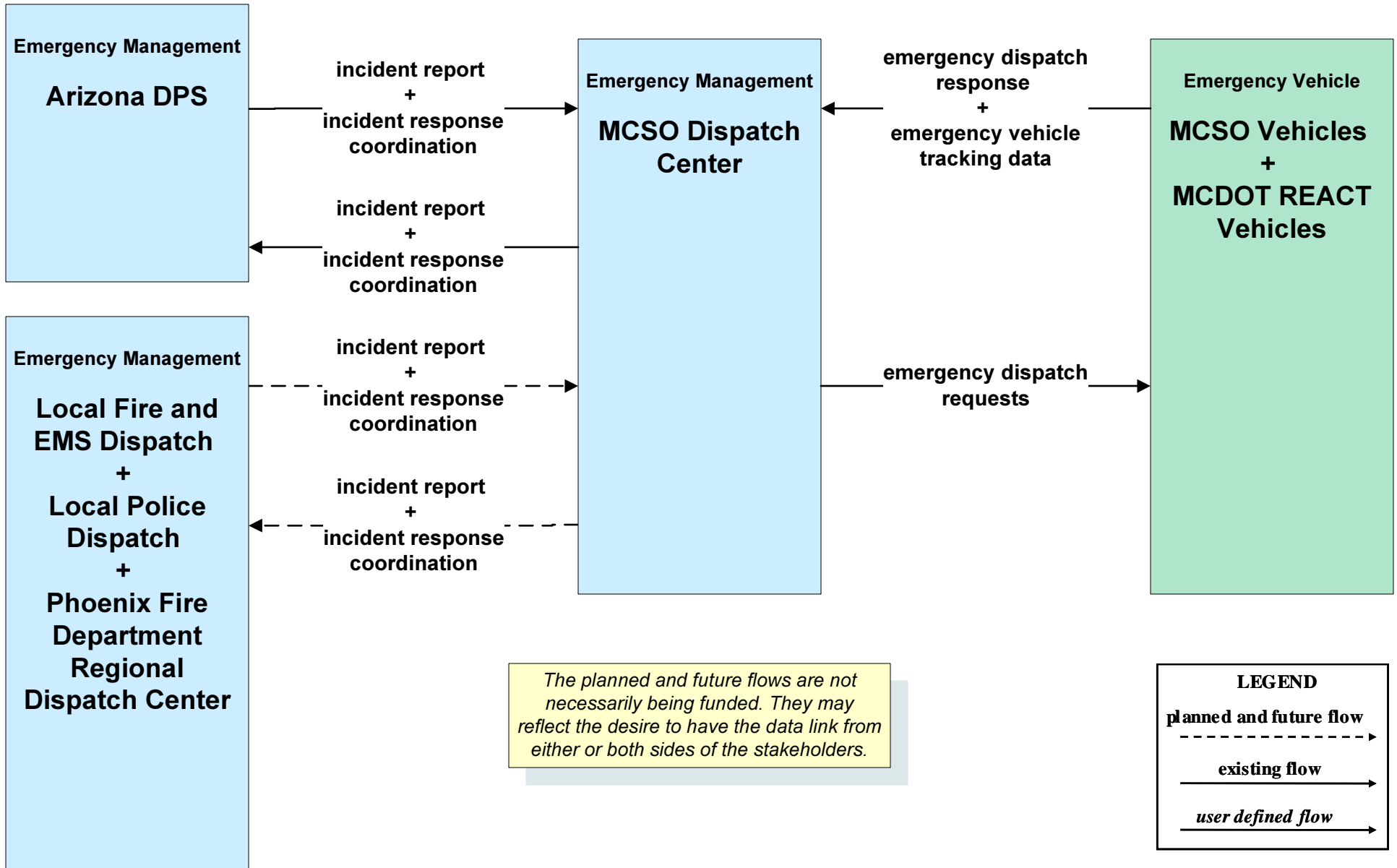


The planned and future flows are not necessarily being funded. They may reflect the desire to have the data link from either or both sides of the stakeholders.

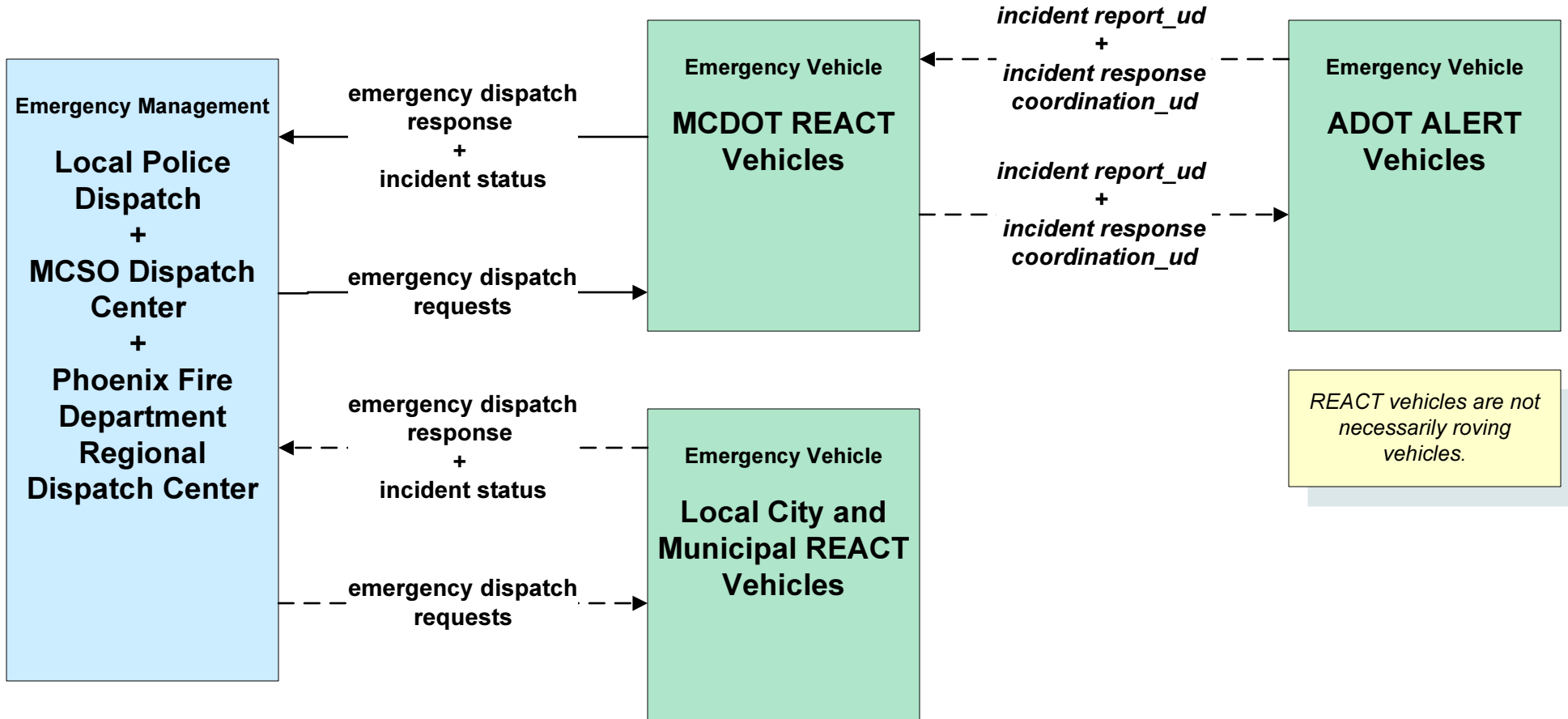
EM01 - Emergency Call-Taking and Dispatch Public Safety Video Distribution System



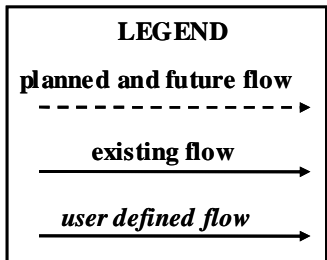
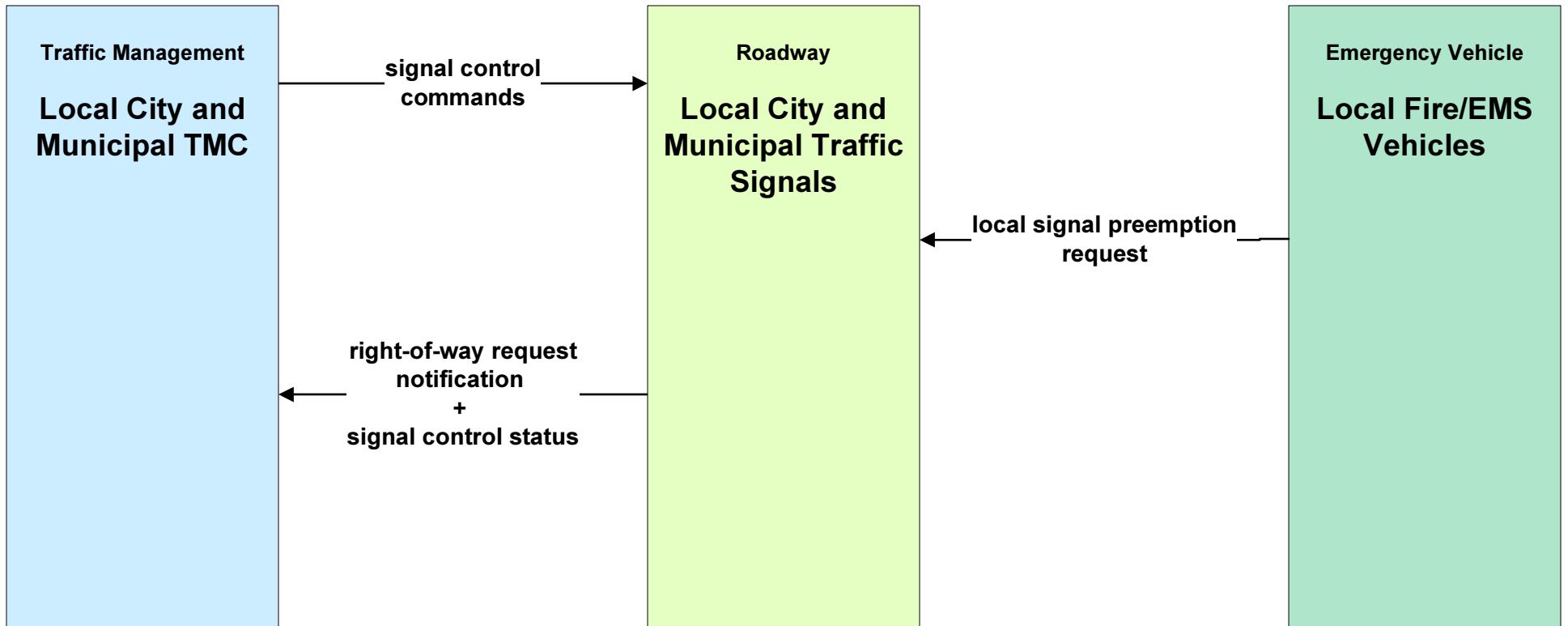
EM01 - Emergency Call-Taking and Dispatch Maricopa County Sheriff's Office



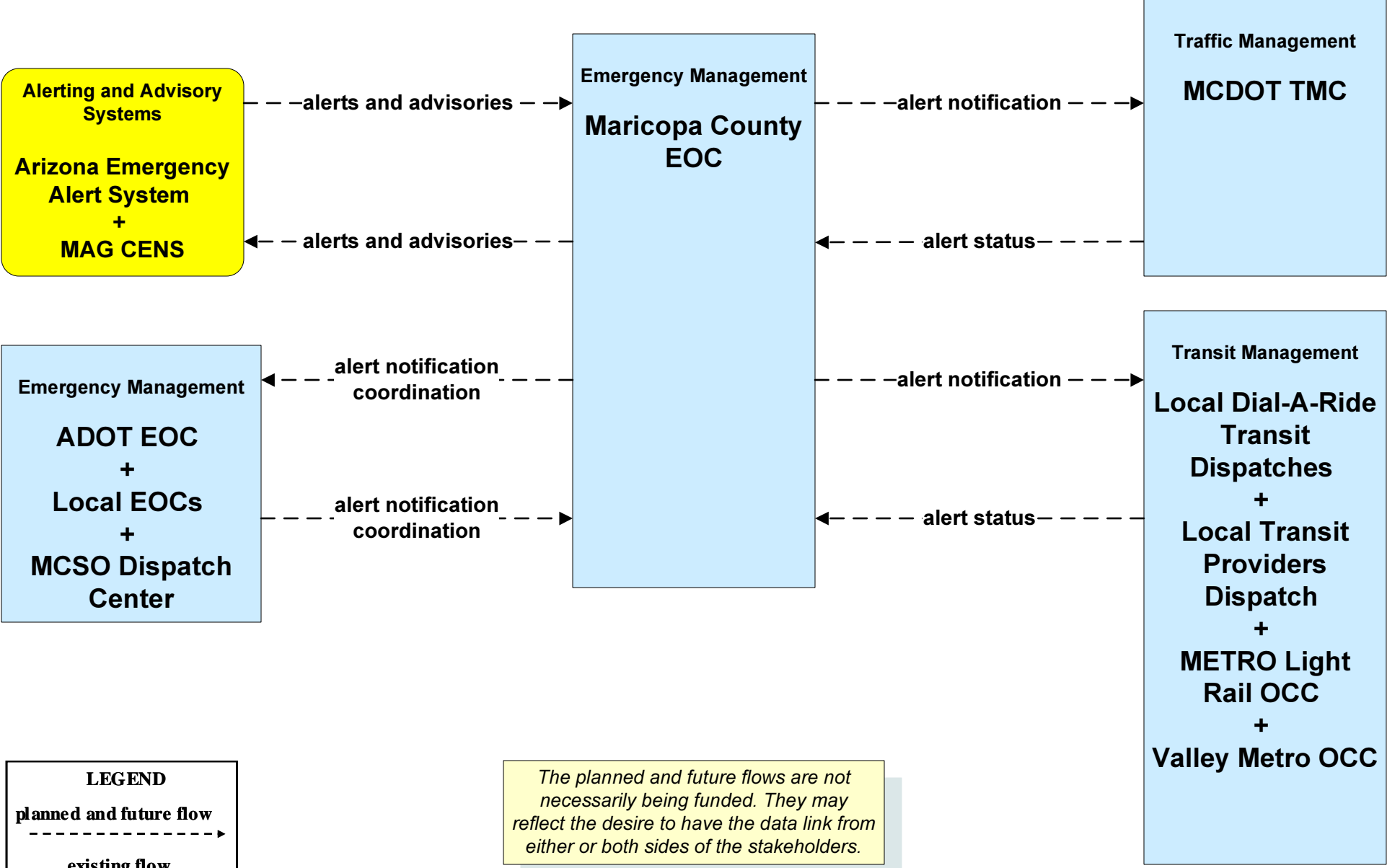
EM01 - Call-Taking and Dispatch REACT Vehicles



**EM02 - Emergency Routing
Local Cities and Municipalities - Generic**



**EM06 - Wide-Area Alert
Maricopa County**



LEGEND

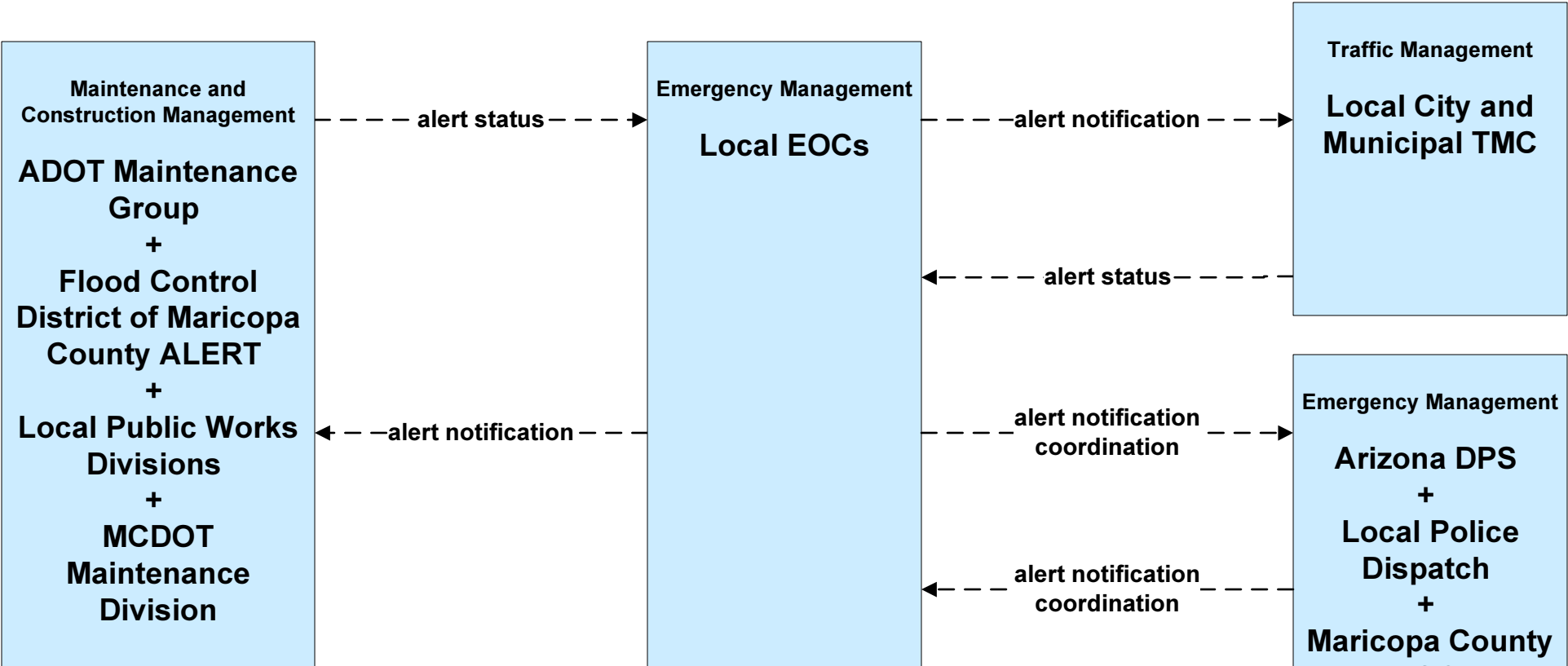
planned and future flow
----->

existing flow
—————>

user defined flow
—————>

The planned and future flows are not necessarily being funded. They may reflect the desire to have the data link from either or both sides of the stakeholders.

**EM06 - Wide-Area Alert
Local EOCs - Generic**



LEGEND

planned and future flow
- - - - ->

existing flow
—————>

user defined flow
—————>

The planned and future flows are not necessarily being funded. They may reflect the desire to have the data link from either or both sides of the stakeholders.

**EM06 - Wide-Area Alert
Amber Alerts**

Emergency Management

- Local Police Dispatch**
- +**
- MCSO Dispatch Center**
- +**
- Other Police Dispatch**
- +**
- Phoenix Police Dispatch**

Emergency Management

Arizona DPS

Traffic Management

- ADOT TOC**
- +**
- City of Avondale TMC**
- +**
- City of Chandler TMC**
- +**
- City of Glendale TMC**
- +**
- City of Goodyear TMC**
- +**
- City of Mesa TMC**
- +**
- City of Peoria TMC**
- +**
- City of Phoenix TMC**
- +**
- City of Scottsdale TMC**
- +**
- City of Surprise TMC**
- +**
- City of Tempe TMC**
- +**
- Local City and Municipal TMC**
- +**
- MCDOT TMC**
- +**
- Town of Gilbert TMC**
- +**
- Town of Queen Creek TMC**

← *amber alerts_ud* →

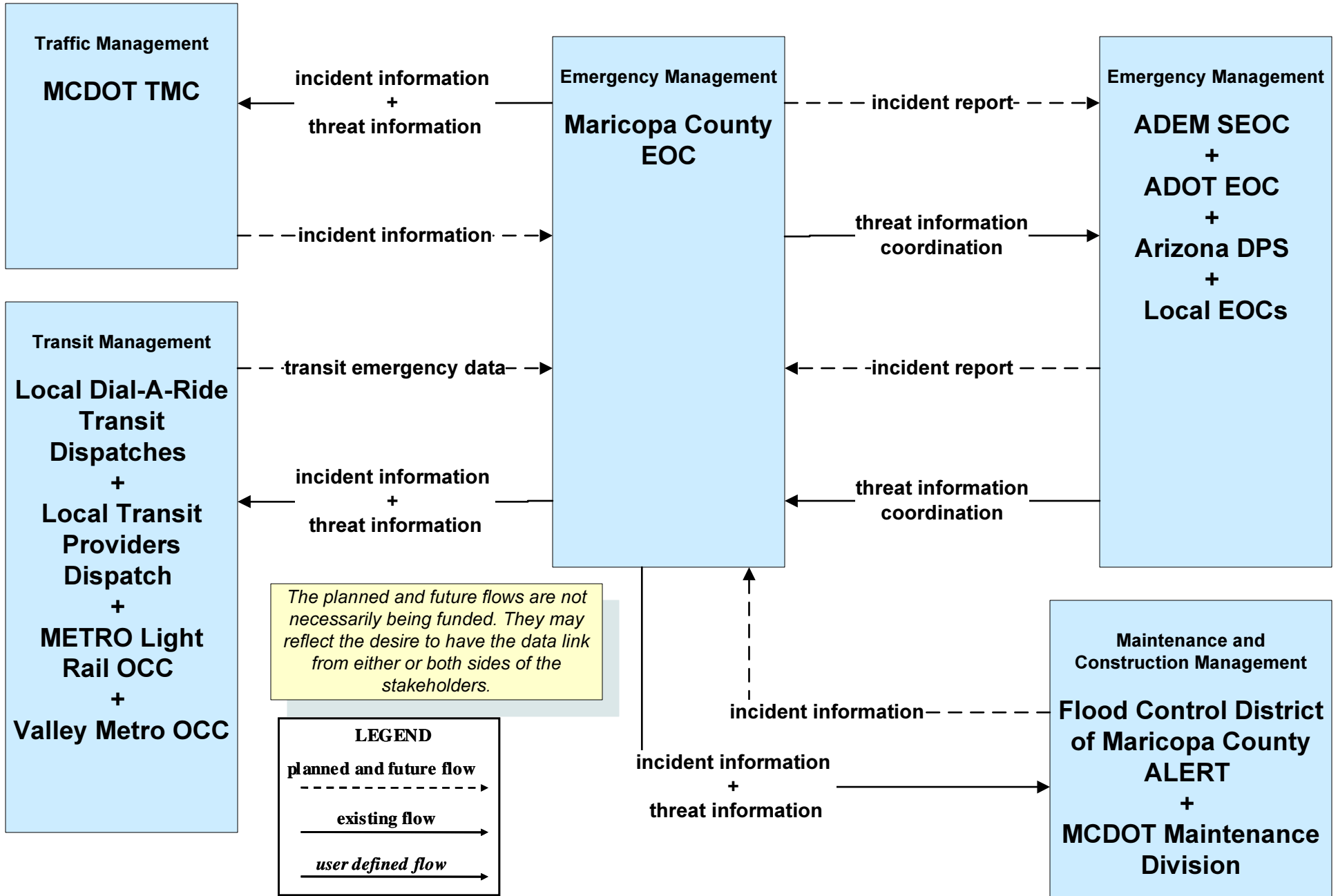
← *amber alerts_ud* →

→ *amber alert confirmation_ud* ←

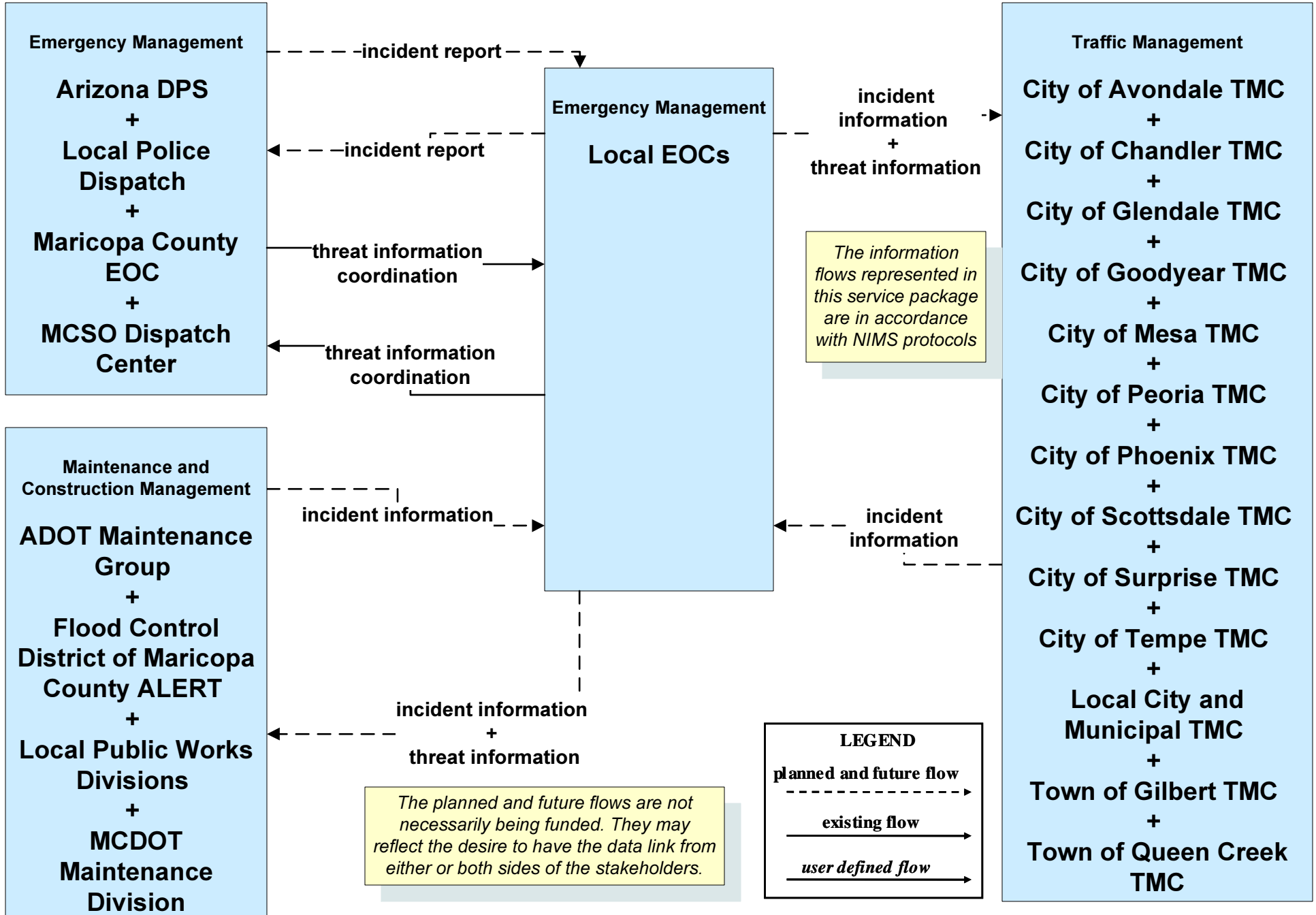
LEGEND

- planned and future flow**
----->
- existing flow**
—————>
- user defined flow**
—————>

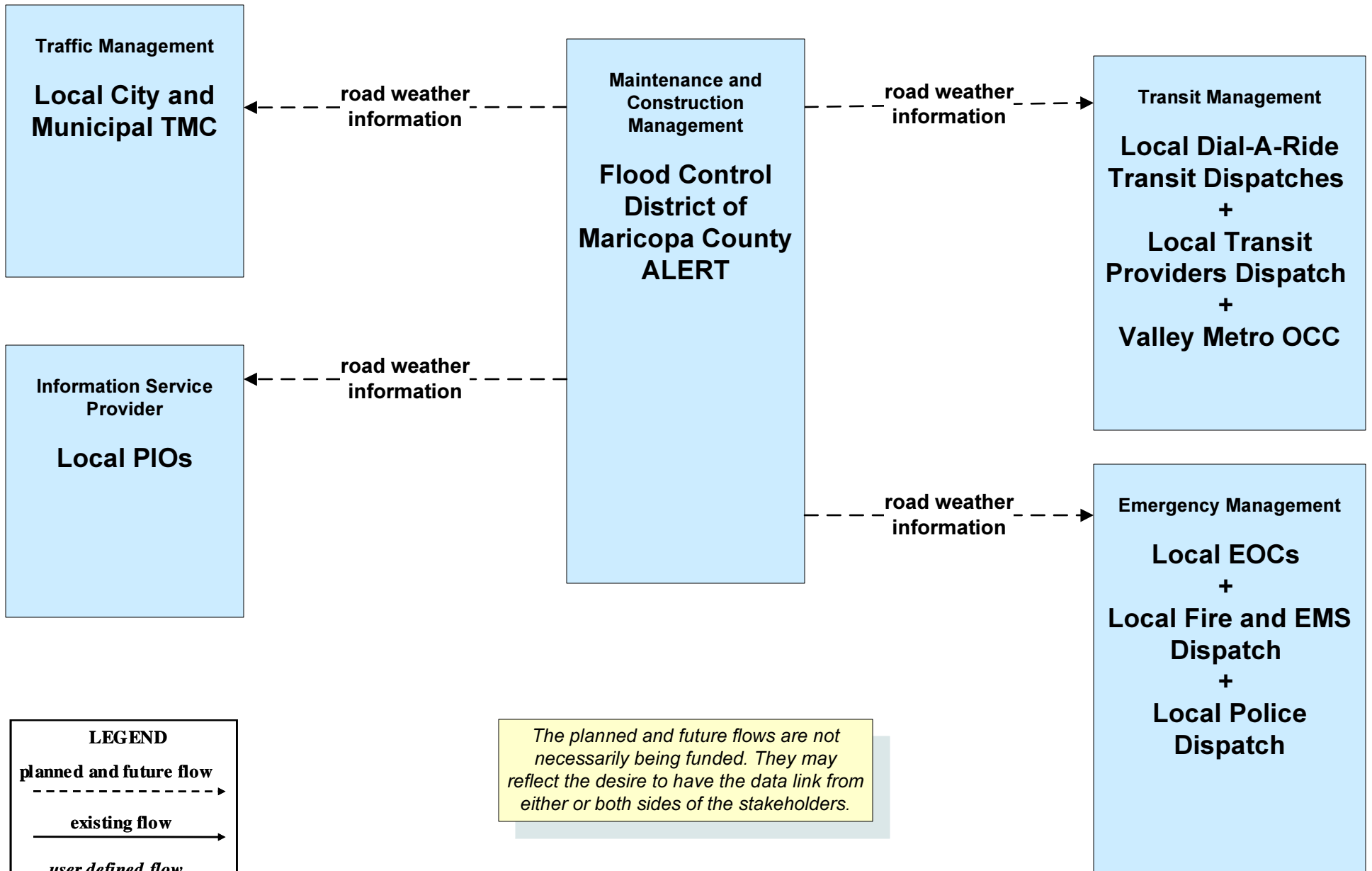
EM07 - Early Warning System Maricopa County EOC



EM07 - Early Warning System Local EOCs



MC04 - Weather Information Processing and Distribution
Flood Control District of Maricopa County – Local Cities and Municipalities - Generic

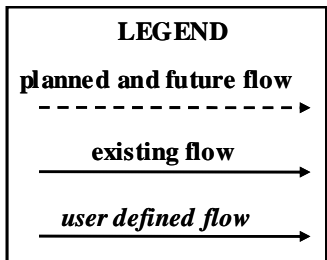
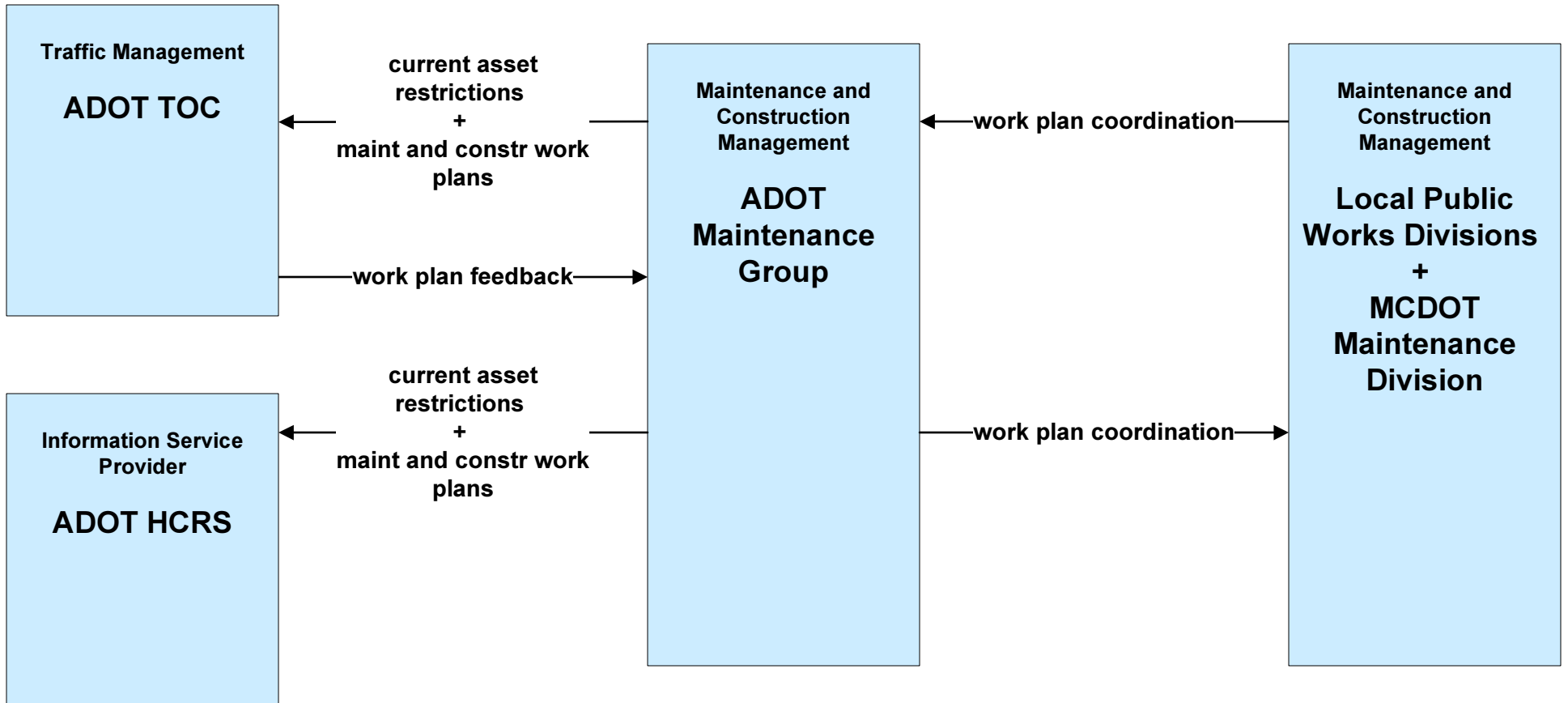


LEGEND

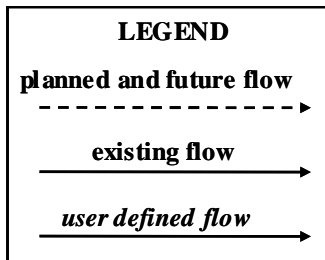
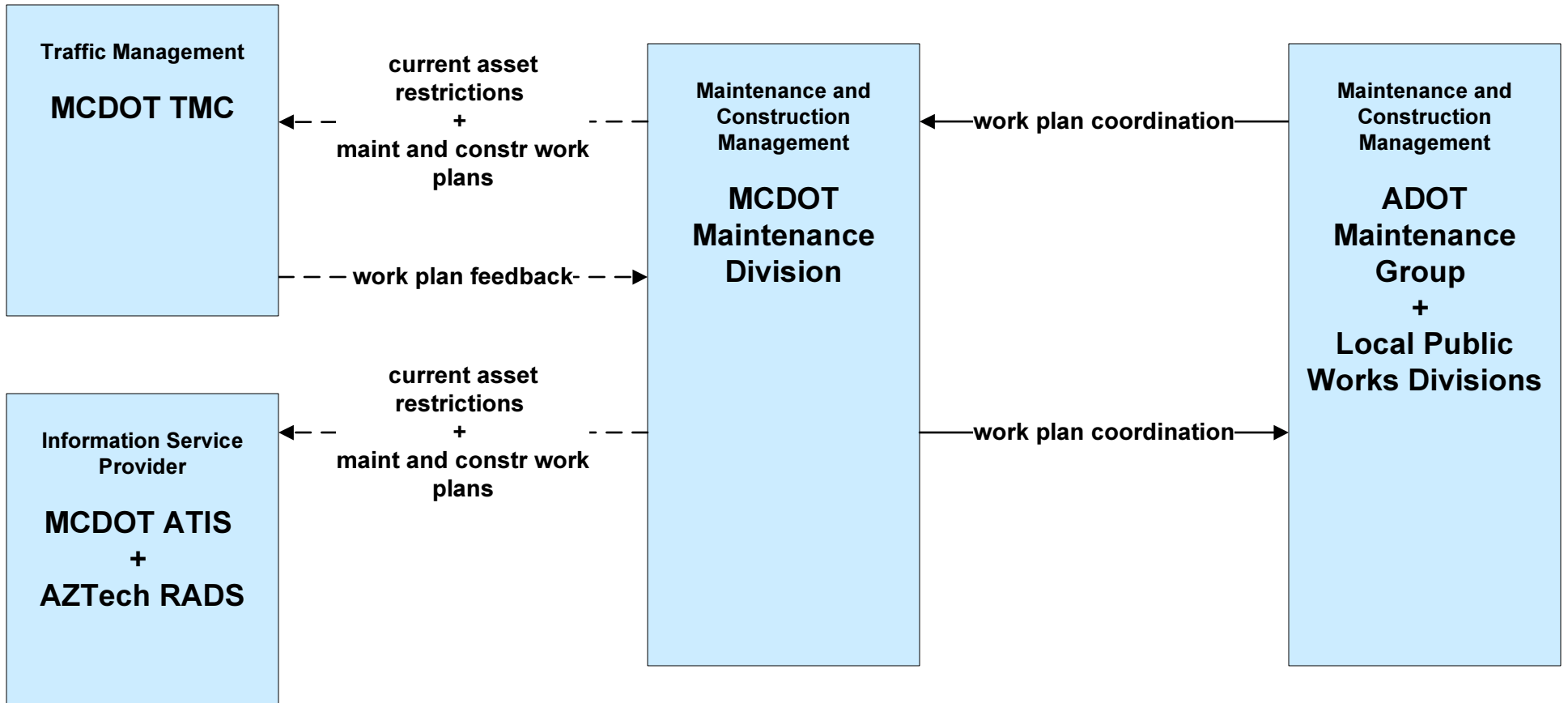
- planned and future flow
- existing flow
- user defined flow

The planned and future flows are not necessarily being funded. They may reflect the desire to have the data link from either or both sides of the stakeholders.

**MC10 - Maintenance and Construction Activity Coordination
Arizona DOT**



MC10 - Maintenance and Construction Activity Coordination Maricopa County



The planned and future flows are not necessarily being funded. They may reflect the desire to have the data link from either or both sides of the stakeholders.

**MC10 - Maintenance and Construction Activity Coordination
Local Cities and Municipalities**

