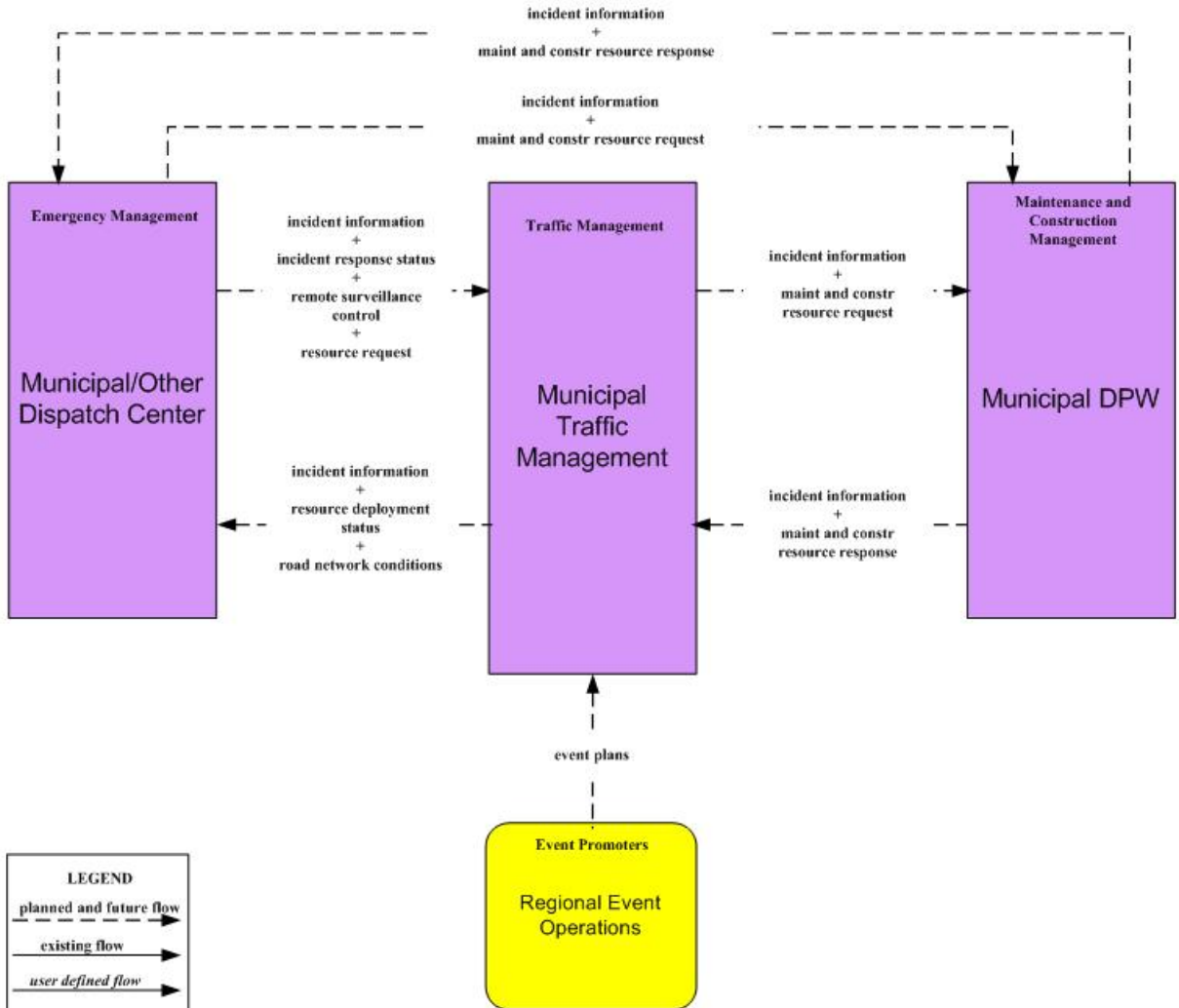
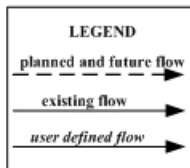
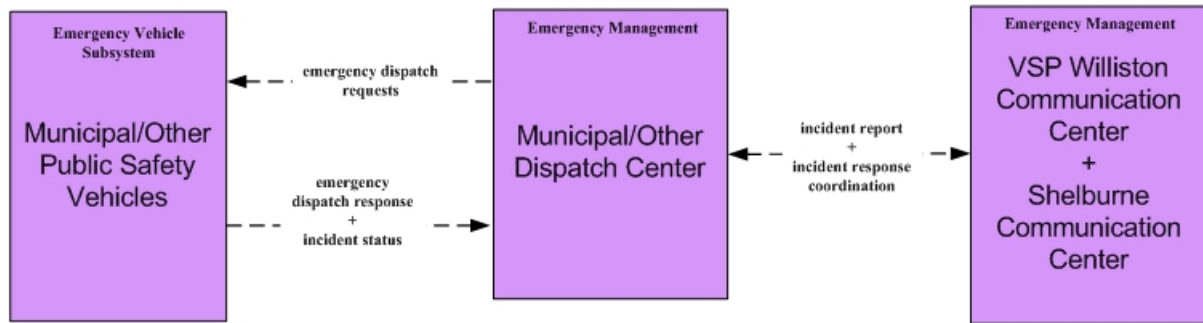


# ATMS08 – Incident Management Municipal Traffic Management

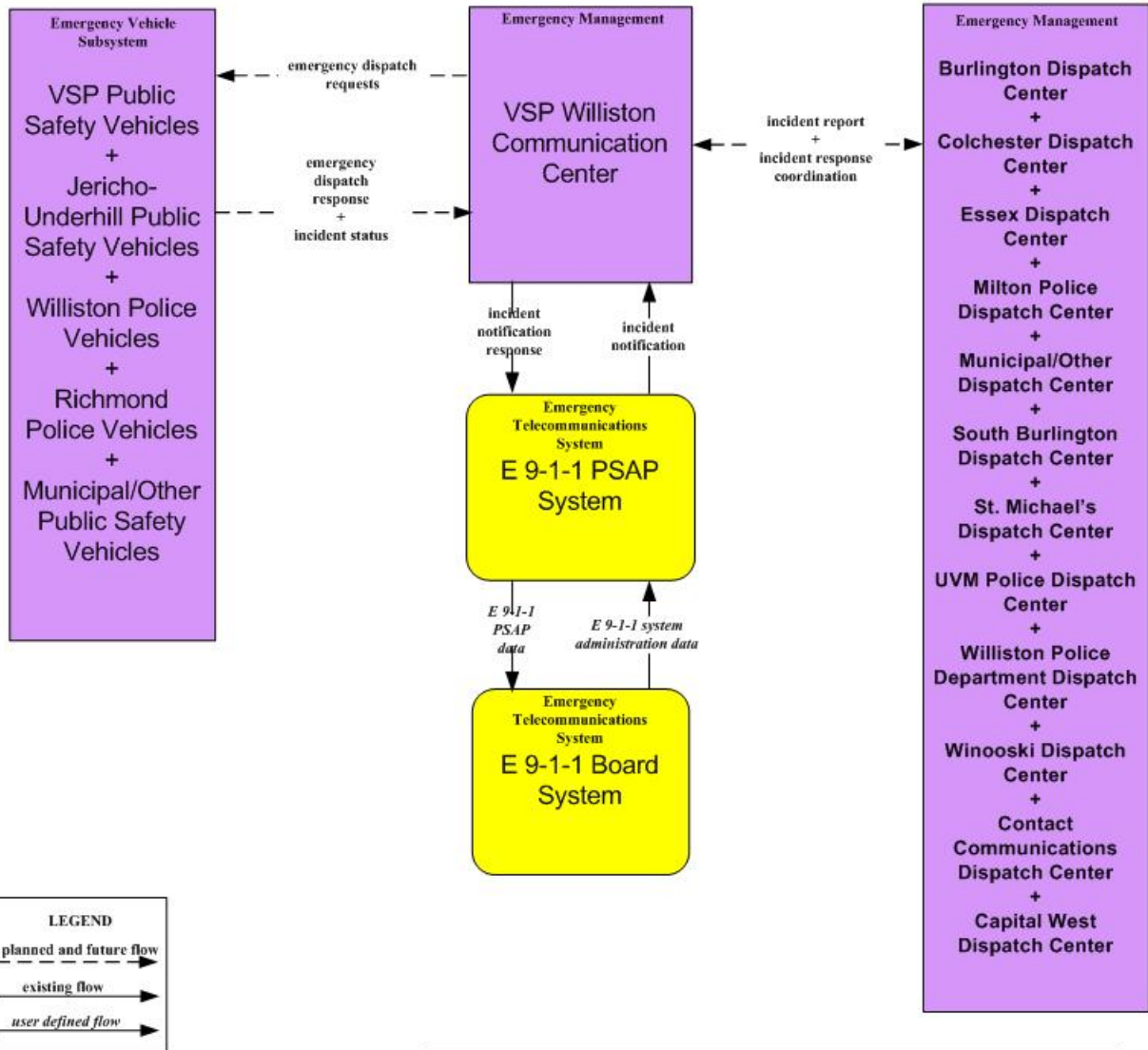


# EM01 - Emergency Call-Taking and Dispatch Municipal Dispatch Center



See Market Package EM01 - VSP Williston Communication Center and Shelburne Communication Center instances for detailed call-taking/dispatching activities at each of them.

EM01 - Emergency Call-Taking and Dispatch  
VSP Williston Communication Center



See other EM01 instances for detailed activities at each Emergency Management center. Note also that Williston Police Vehicles are dispatched out of the VSP Williston Communication Center between 11 p.m. and 7 a.m. and out of the Williston Police Dispatch 7 a.m. to 11 p.m. (see Market Package EM01 – Williston Police Dispatch Center instance).

MC10 – Maintenance and Construction Activity Coordination  
Municipal DPW

