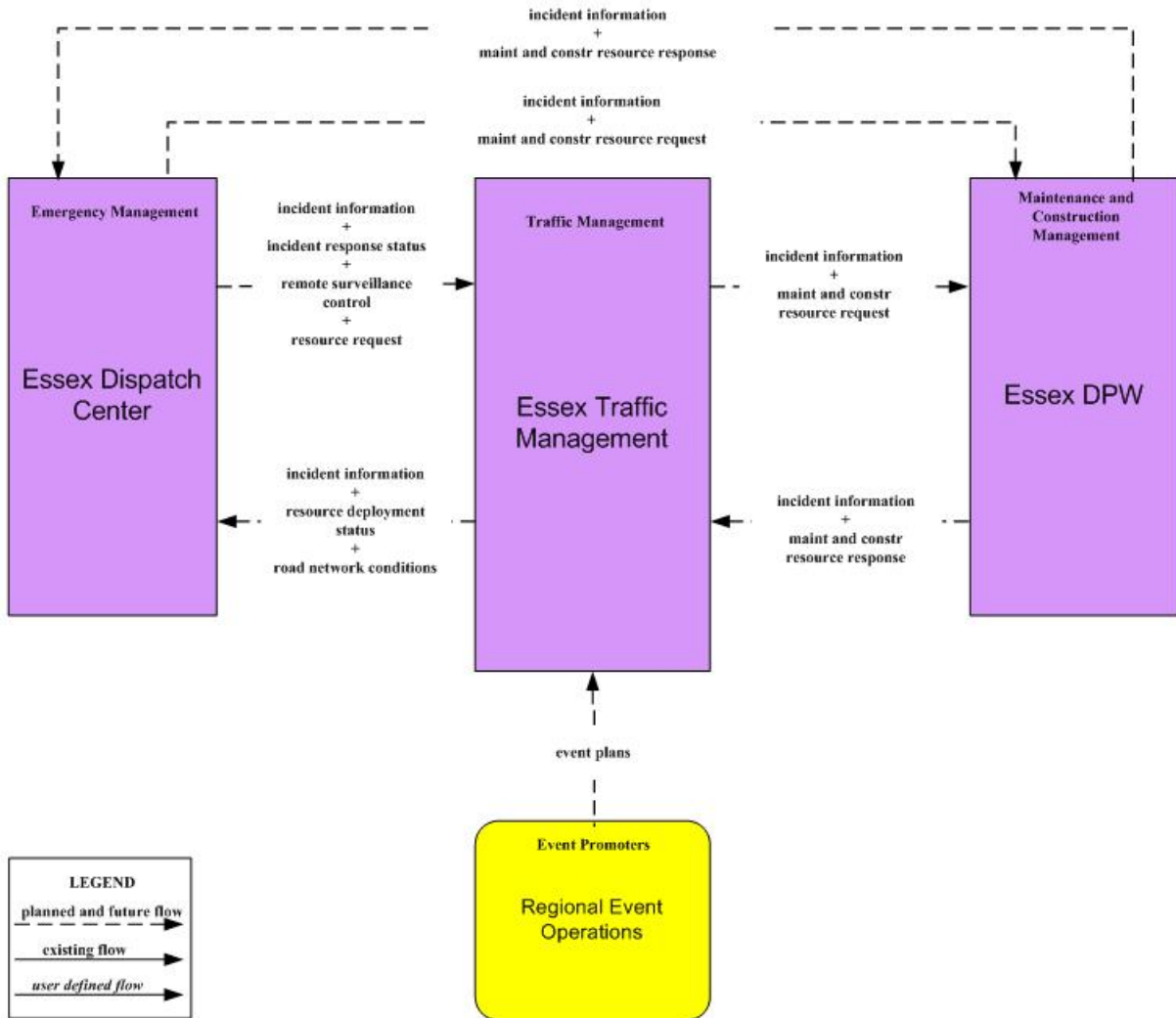
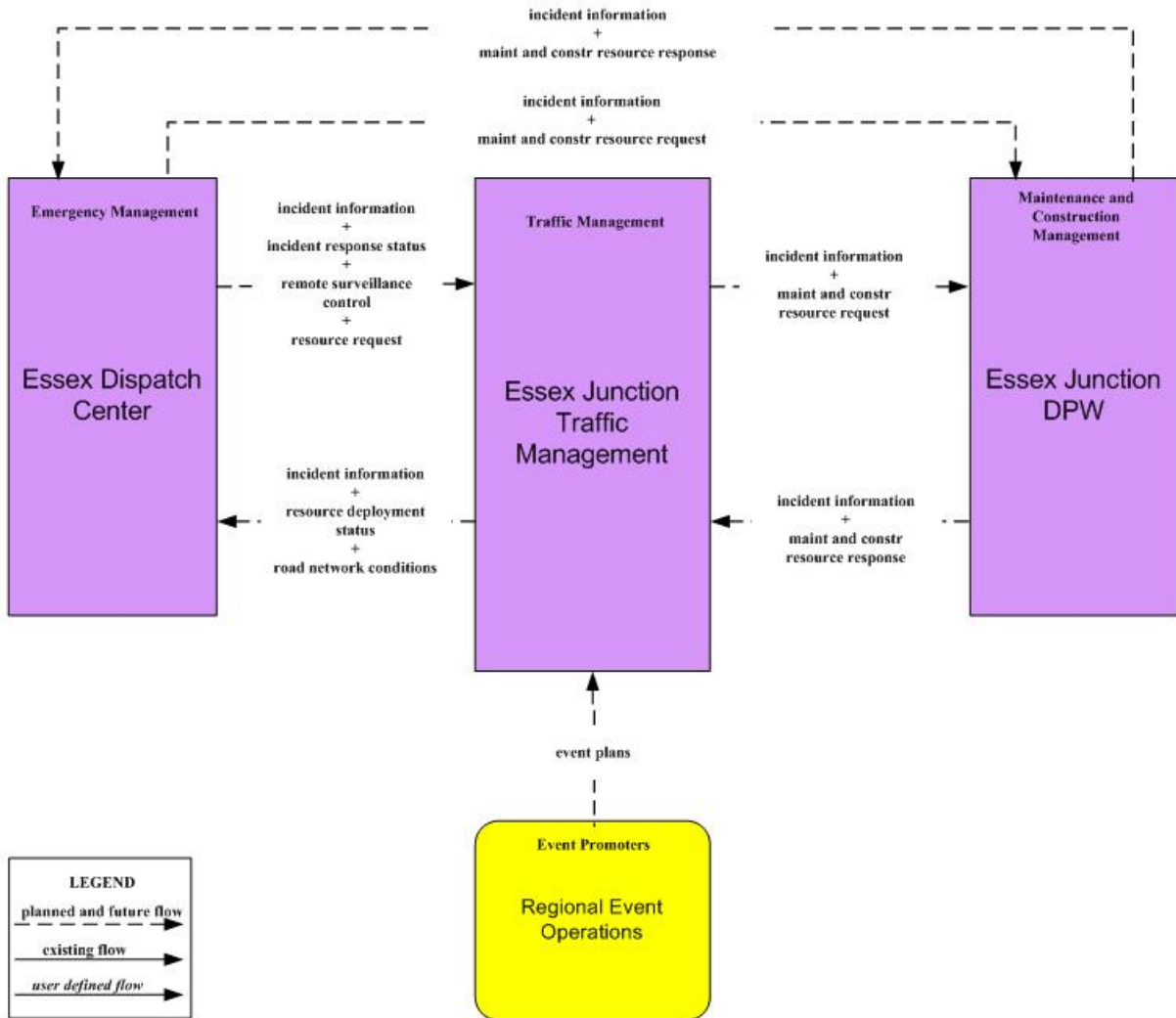


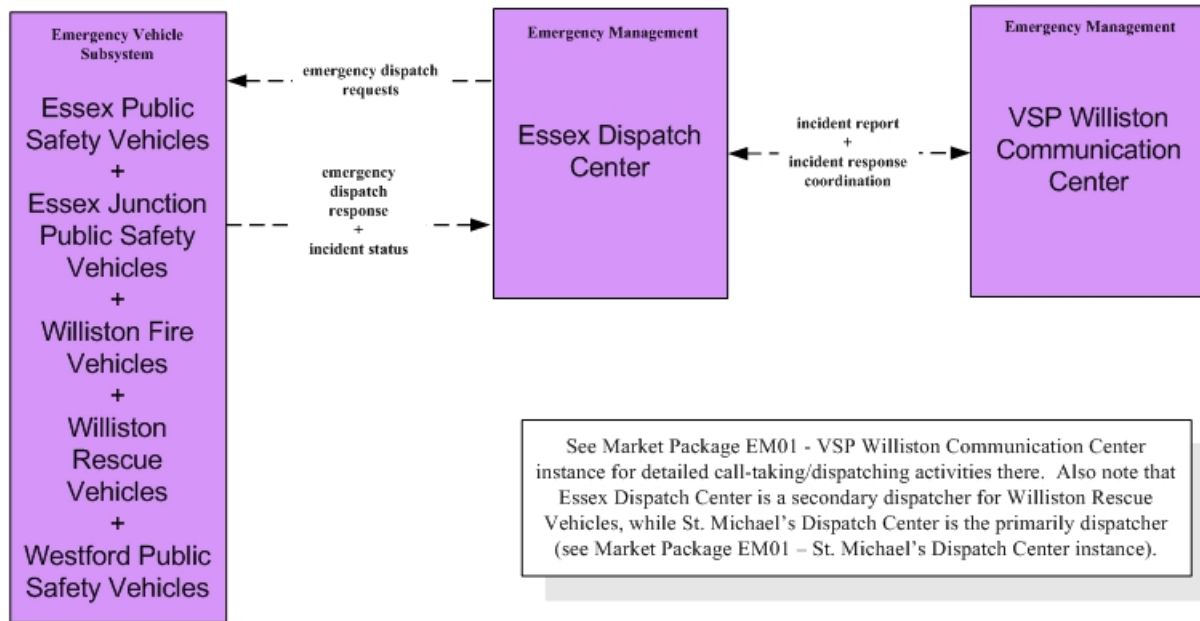
ATMS08 – Incident Management Essex Traffic Management



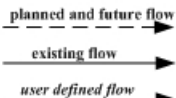
ATMS08 – Incident Management Essex Junction Traffic Management



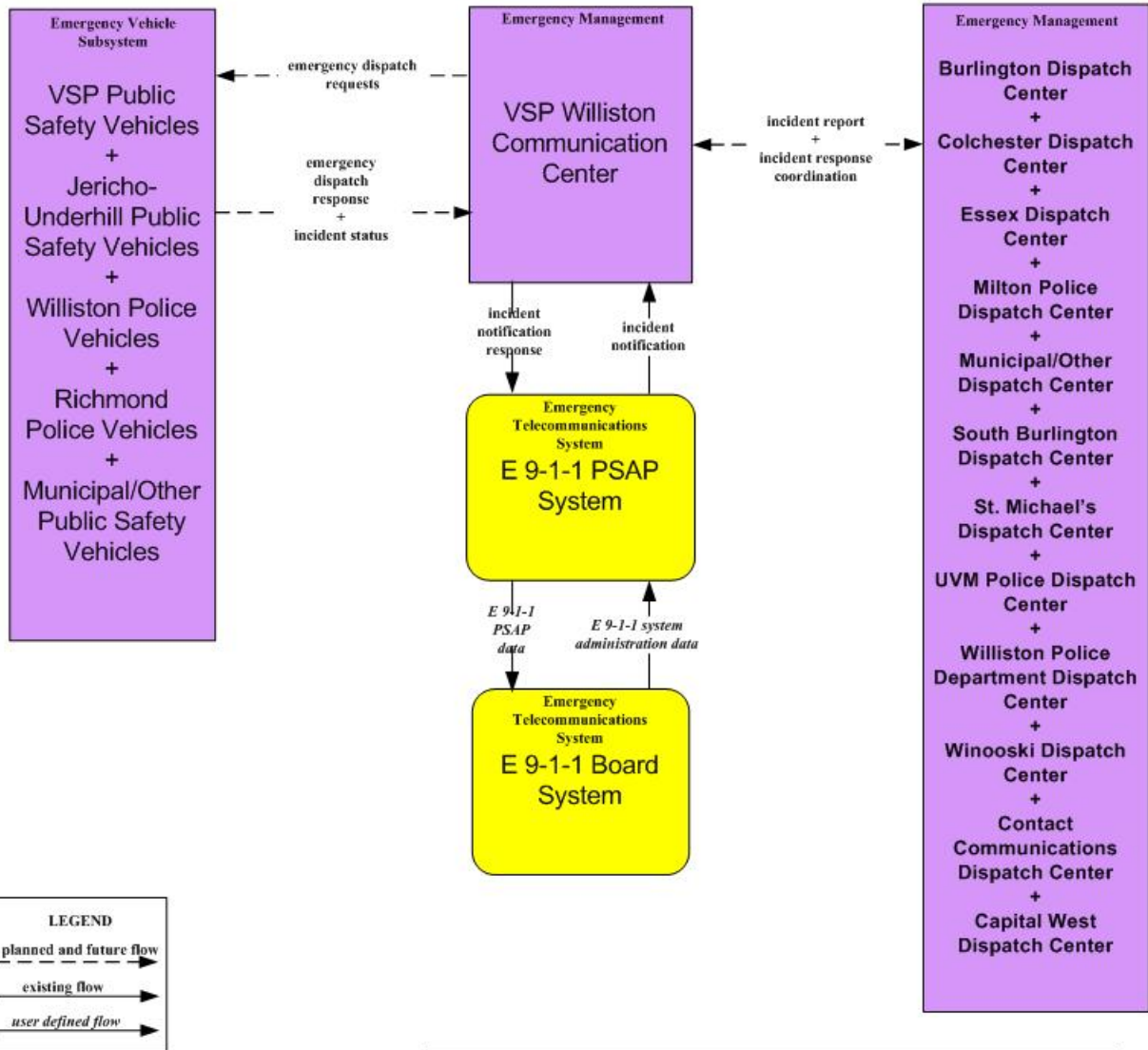
EM01 - Emergency Call-Taking and Dispatch Essex Dispatch Center



LEGEND



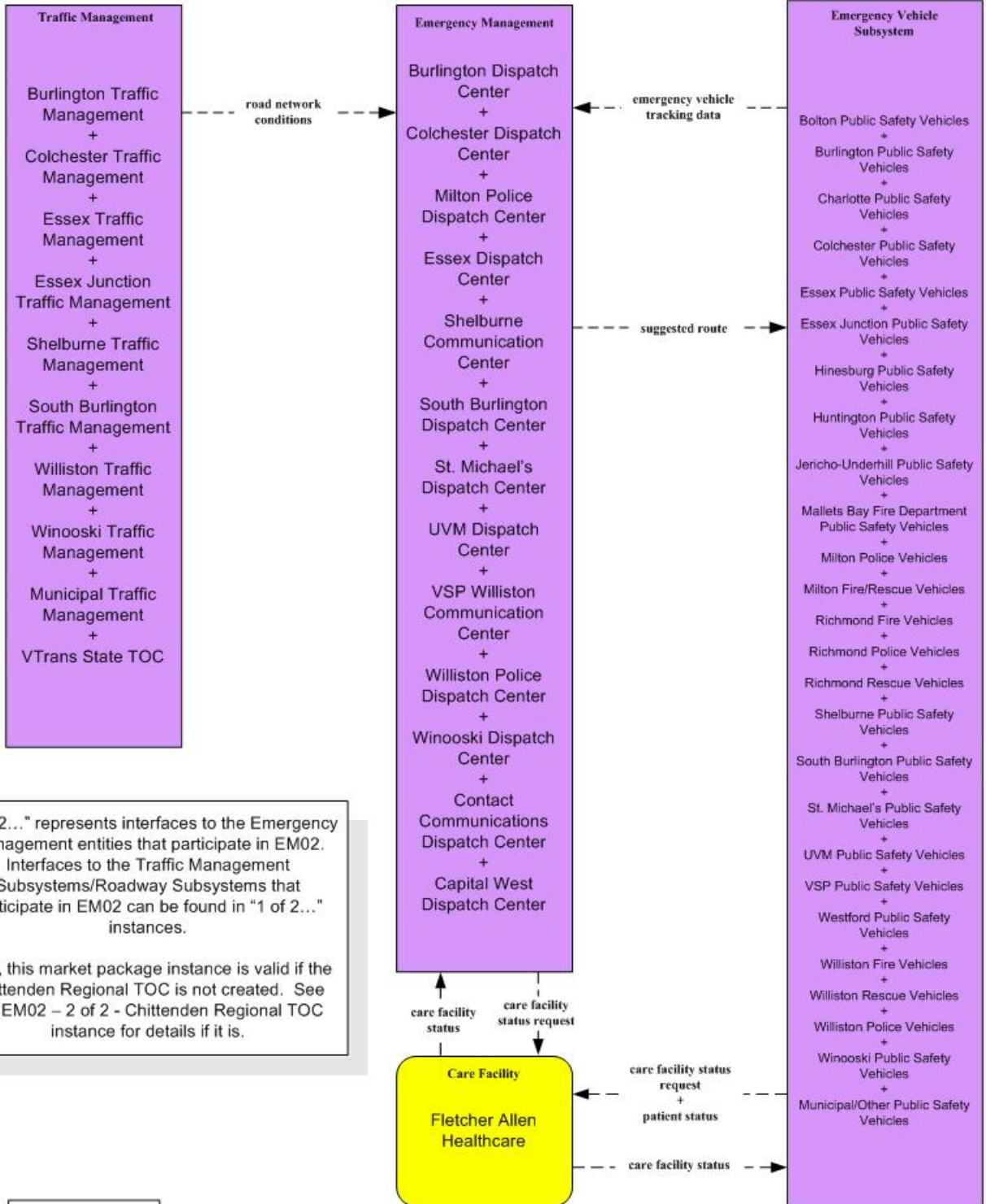
EM01 - Emergency Call-Taking and Dispatch
VSP Williston Communication Center



See other EM01 instances for detailed activities at each Emergency Management center. Note also that Williston Police Vehicles are dispatched out of the VSP Williston Communication Center between 11 p.m. and 7 a.m. and out of the Williston Police Dispatch 7 a.m. to 11 p.m. (see Market Package EM01 – Williston Police Dispatch Center instance).

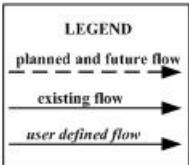
EMO2 – Emergency Routing

2 of 2 – Emergency Management

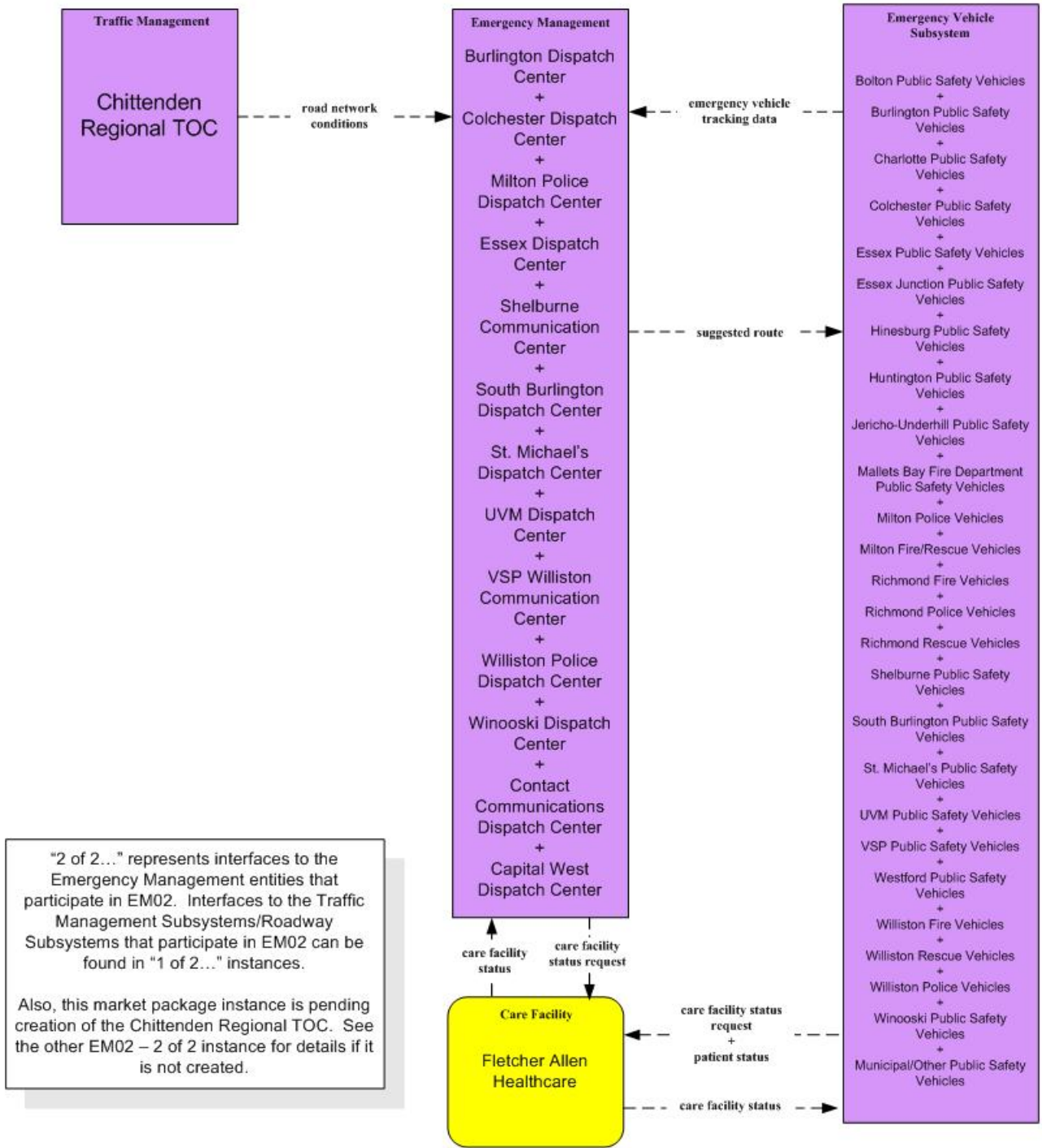


"2 of 2..." represents interfaces to the Emergency Management entities that participate in EM02. Interfaces to the Traffic Management Subsystems/Roadway Subsystems that participate in EM02 can be found in "1 of 2..." instances.

Also, this market package instance is valid if the Chittenden Regional TOC is not created. See the EM02 – 2 of 2 - Chittenden Regional TOC instance for details if it is.

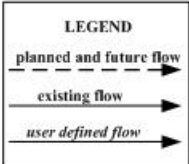


EMO2 – Emergency Routing
2 of 2 - Emergency Management – Chittenden Regional TOC

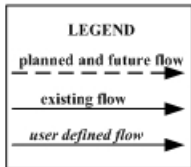
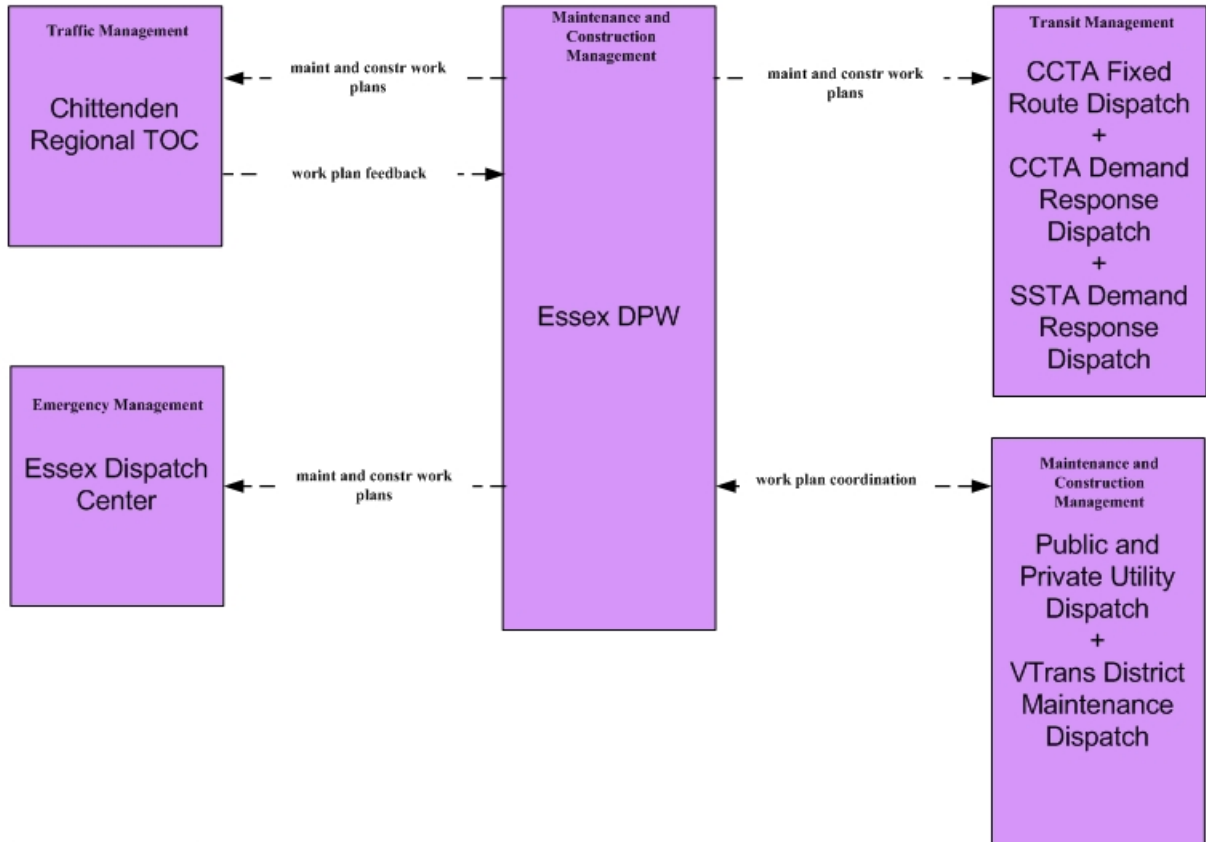


"2 of 2..." represents interfaces to the Emergency Management entities that participate in EM02. Interfaces to the Traffic Management Subsystems/Roadway Subsystems that participate in EM02 can be found in "1 of 2..." instances.

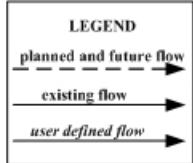
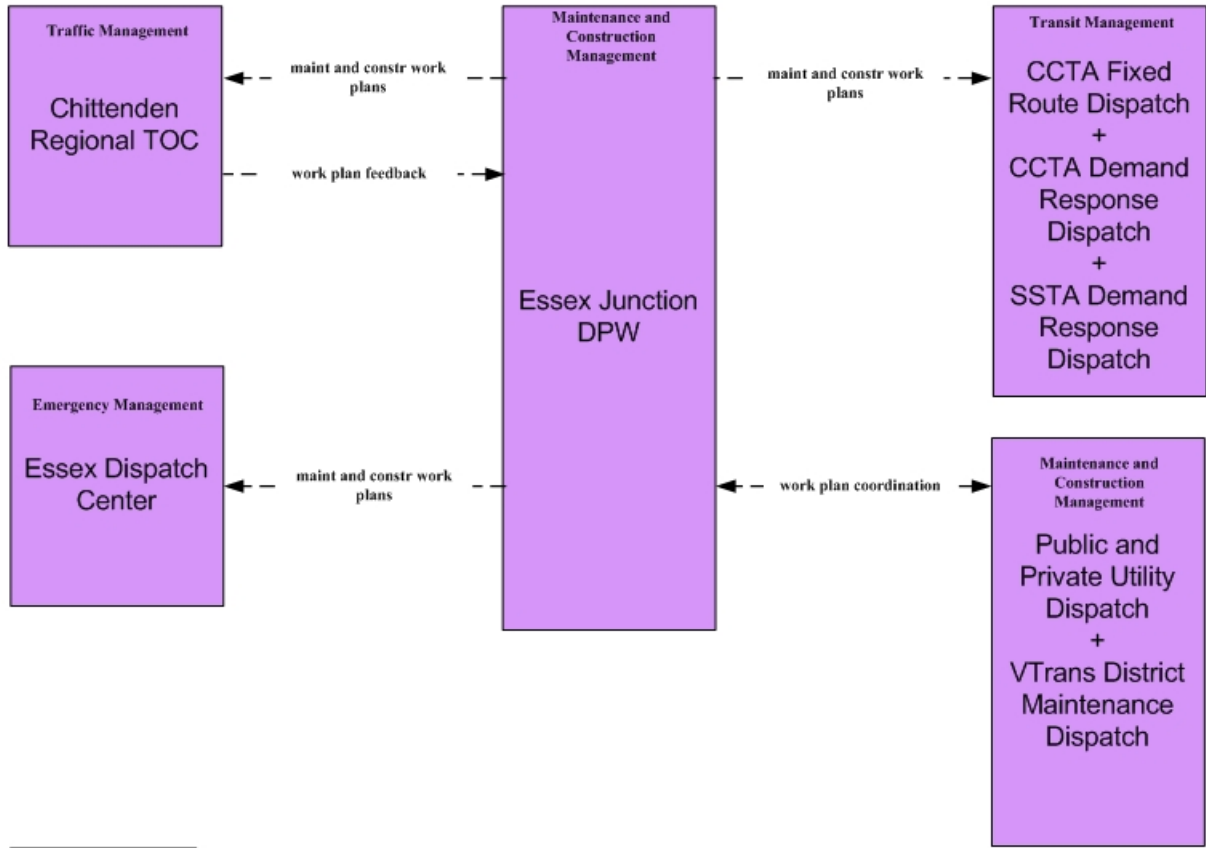
Also, this market package instance is pending creation of the Chittenden Regional TOC. See the other EM02 – 2 of 2 instance for details if it is not created.



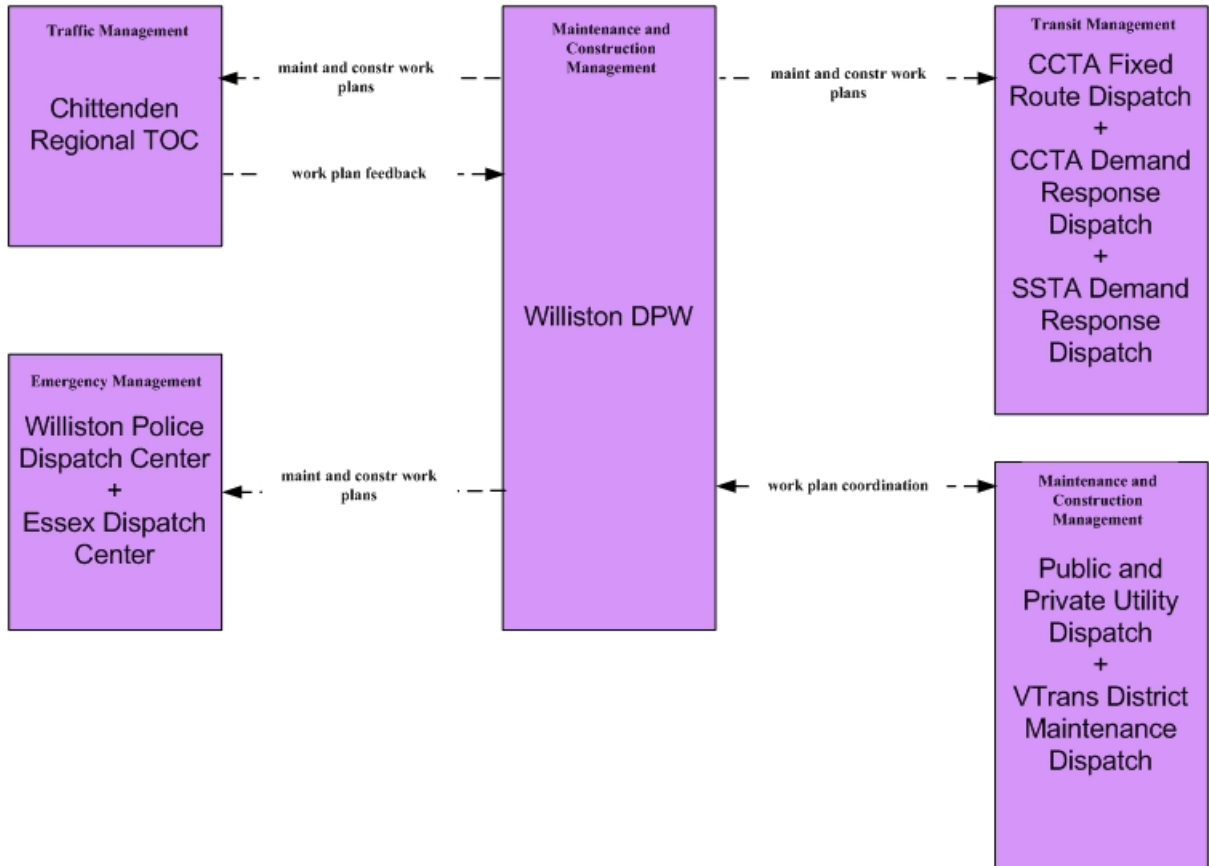
MC10 – Maintenance and Construction Activity Coordination
Essex DPW



MC10 – Maintenance and Construction Activity Coordination
Essex Junction DPW



MC10 – Maintenance and Construction Activity Coordination
Williston DPW



LEGEND

